

Parts Manual

Floor type Gas Convection Steamer



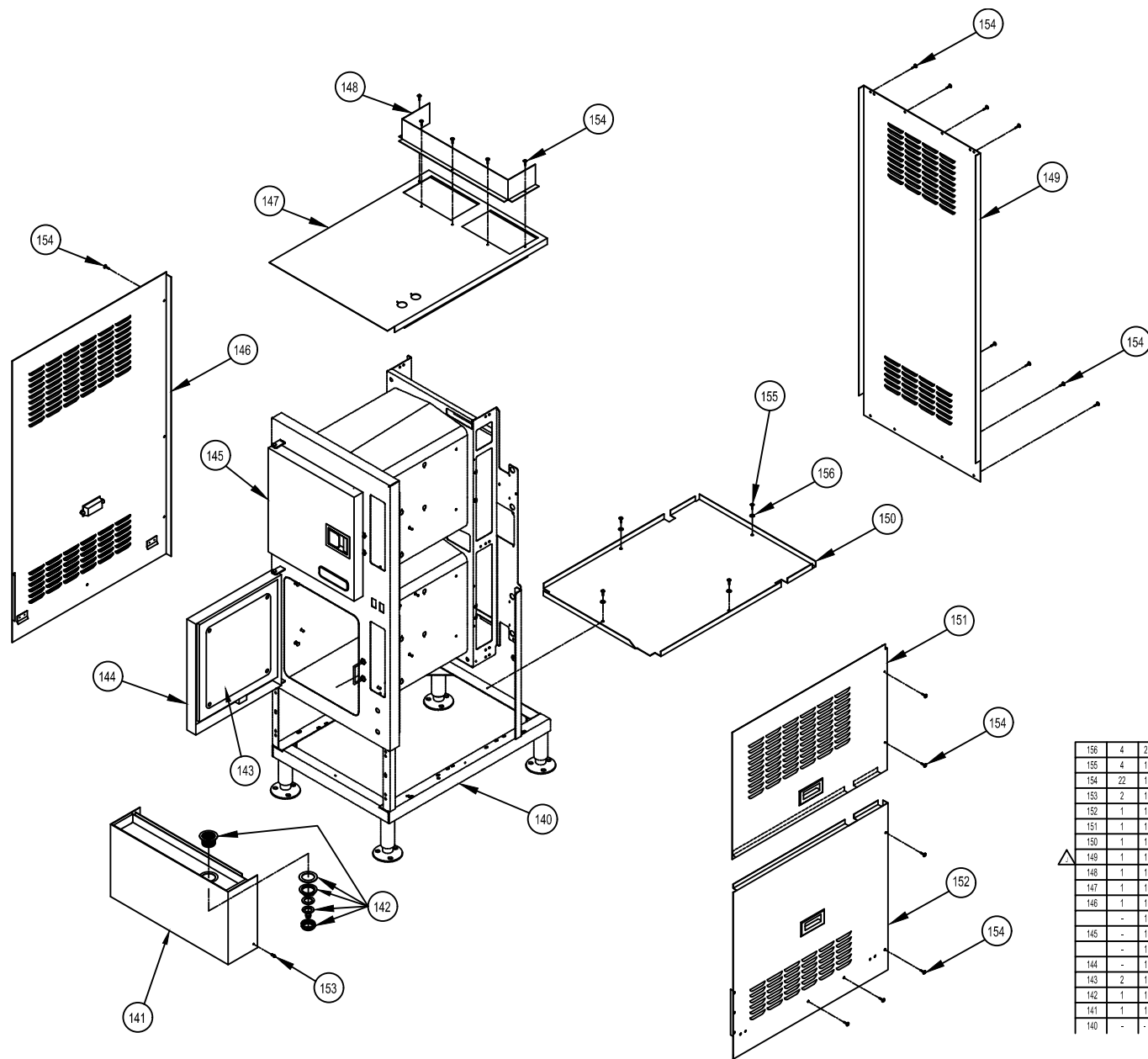
Series: SteamCraft Model 24CGA10.2

1333 East 179th Street
Cleveland, Ohio 44110

Phone: (216) 481-4900
1-800-338-2204

Fax: (216) 481-3782
www.clevelandrange.com

 Cleveland



156	4	23116	WASHER, FLAT, 0.281 ID x 0.625 OD
155	4	106123	SCREW, 10-32 x 1/2, TORX/SLOT
154	22	104080	SCREW, #8 x 1/2, PAN HD, PHILLIPS
153	2	107316	SCREW, PAN HEAD #10 x 3/4, THREAD CUTTING
152	1	107272	PANEL, RIGHT SIDE, BOTTOM, ASSY
151	1	107273	PANEL, RIGHT SIDE, TOP, ASSY
150	1	110528	PAN, BASE
149	1	113303	PANEL, BACK
148	1	106681	HOOD, GAS VENT
147	1	106908	PANEL, TOP, WELDMENT
146	1	106043	PANEL, LEFT SIDE, ASSY
145	-	1042061	DOOR, OUTER ASSY, HR, WITH LOGO
145	-	104206	DOOR, OUTER ASSY, HL, WITH LOGO
144	-	1100181	DOOR, OUTER ASSY, HR
144	-	110018	DOOR, OUTER ASSY, HL
143	2	104202	DOOR ASSY, INNER
142	1	106737	DRAIN ASSY
141	1	106907	PANEL ASSY, LOWER FRONT
140	-	-	CAVITY ASSEMBLY

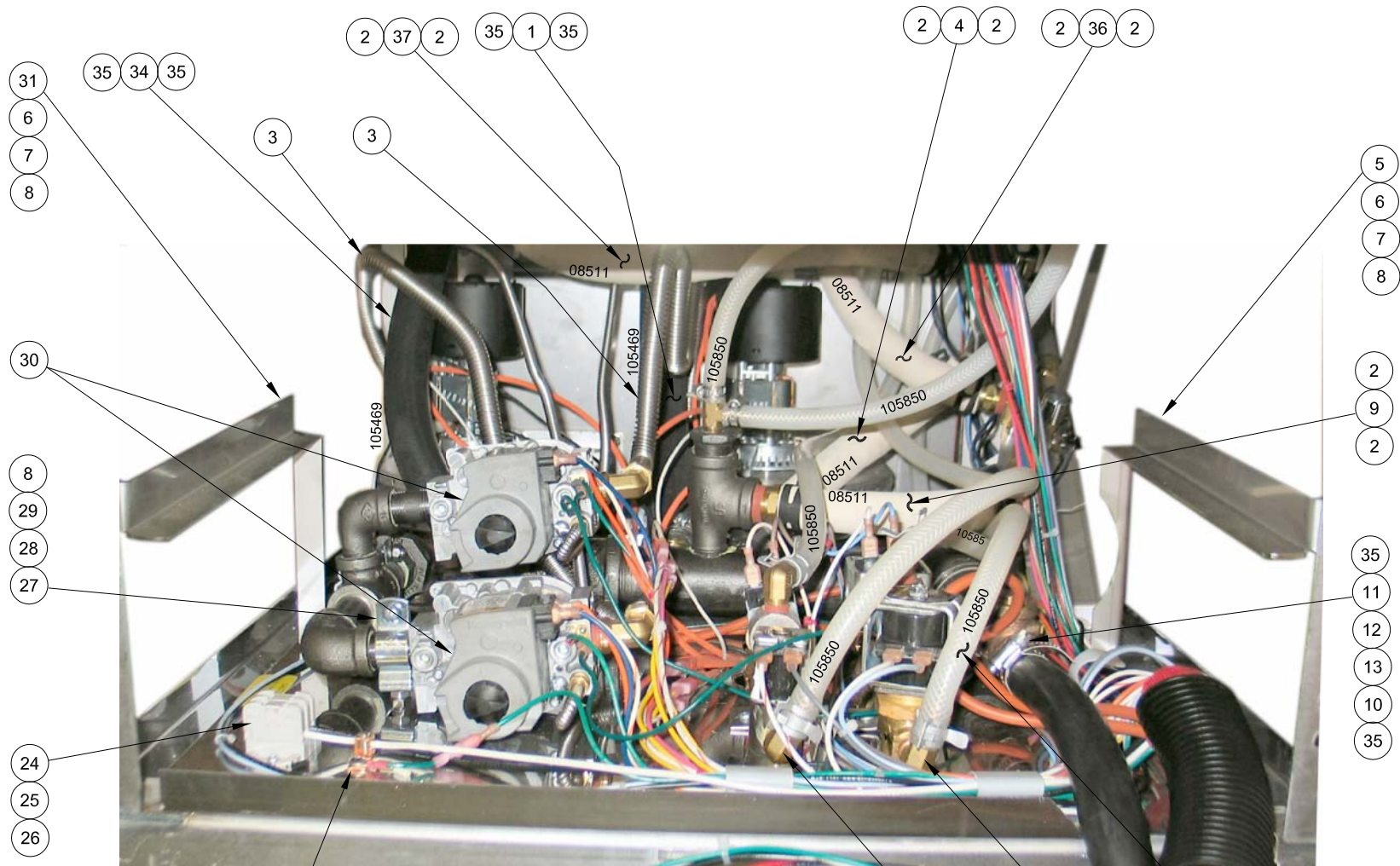
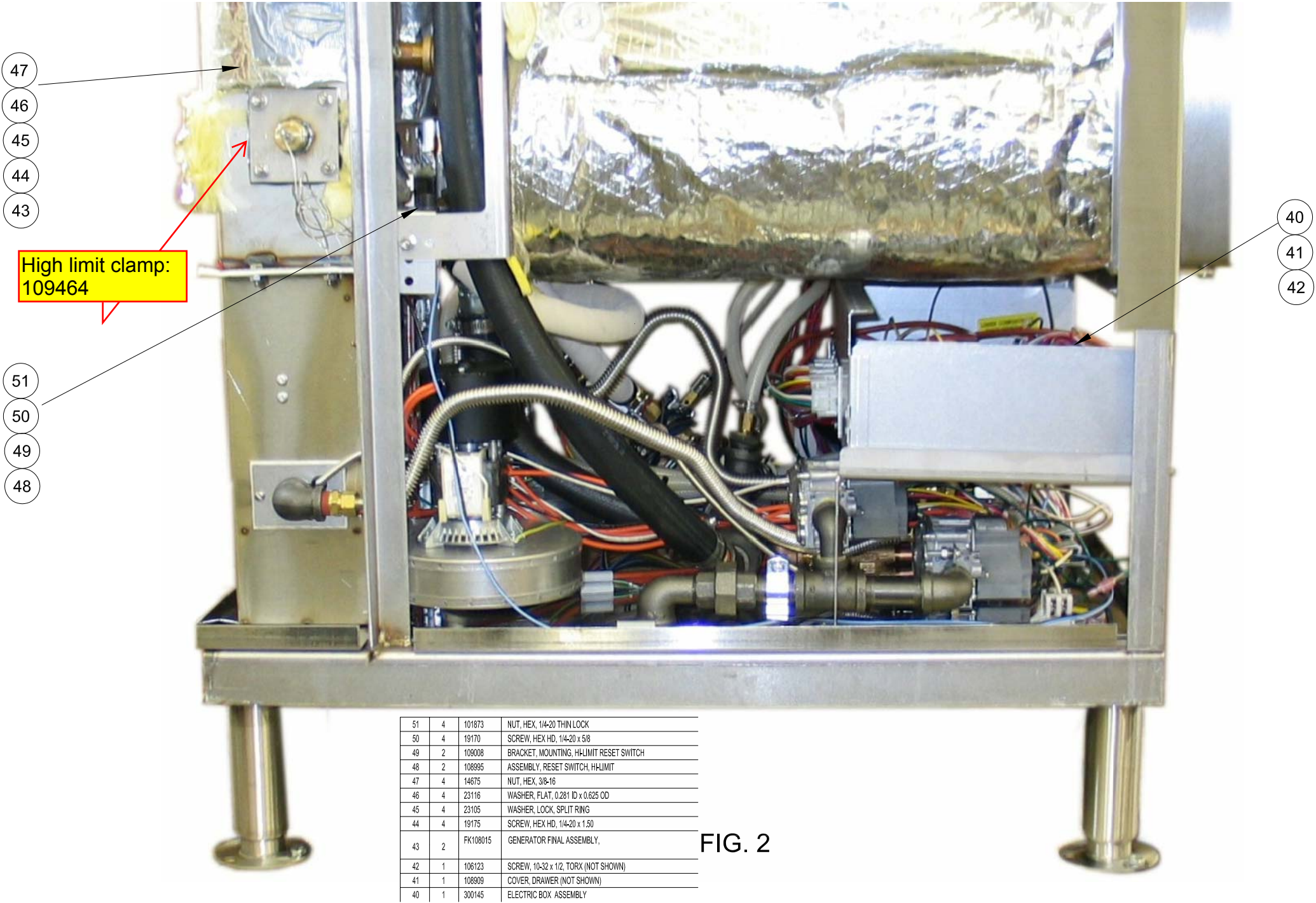


FIG. 1

	23	22	21	20
14	3	1058503600	HOSE, NYLON REINFORCED, 1/4 ID x 36.00 LG	
13	2	23106	WASHER, LOCK, 5/16, SPLIT RING	
12	1	108030	CLAMP, PIPE, 5/16 U-BOLT, W/NUTS	
11	1	112302	DRAIN MANIFOLD ASSY, GEMINI 10.2	
10	1	107010	HOSE, TRAY DRAIN	
9	1	085110700	HOSE, WHITE, EPDM, 3/4 ID x 7.00 LG	
8	6	14665	NUT, HEX, 1/4-20, LOCK	
7	4	23116	WASHER, FLAT, 0.281 ID x 0.625 OD	
6	4	19170	SCREW, HEX HD, 1/4-20 x 5/8	
5	1	108857	RAIL, RIGHT, DRAWER	
4	1	085110850	HOSE, WHITE, EPDM, 3/4 ID x 8.500 LG	
3	2	108928	GAS LINE, MAIN, GEMINI	
2	8	107312	CLAMP, HOSE, 1-1/8" OD METAL TENSION BAND	
1	1	1054691300	HOSE, EPDM, 1.00 ID x 13.00 LG	

27	2	WR50188	CLAMP, PIPE, 3/4
26	2	106127	SCREW, 6-32 x 1/2, TORX
25	1	20302	TERMINAL END SECTION
24	2	20301	TERMINAL SECTION
23	1	14659	NUT, HEX, 10-24
22	1	101231	SCREW, 10-24 x 0.500, TRUSS HD
21	1	23114	WASHER, LOCK, INTERNAL TOOTH, #10
20	1	20304	LUG, GROUND
19	1	1105271	VALVE ASSY, WATER INLET, BOILER FILL
18	4	106123	SCREW, 10-32 x 1/2, TORX
17	1	110527	VALVE ASSY, WATER INLET, CONDENSOR
16	1	1058506000	HOSE, NYLON REINFORCED, 1/4 ID x 60.00 LG
-	-	-	-

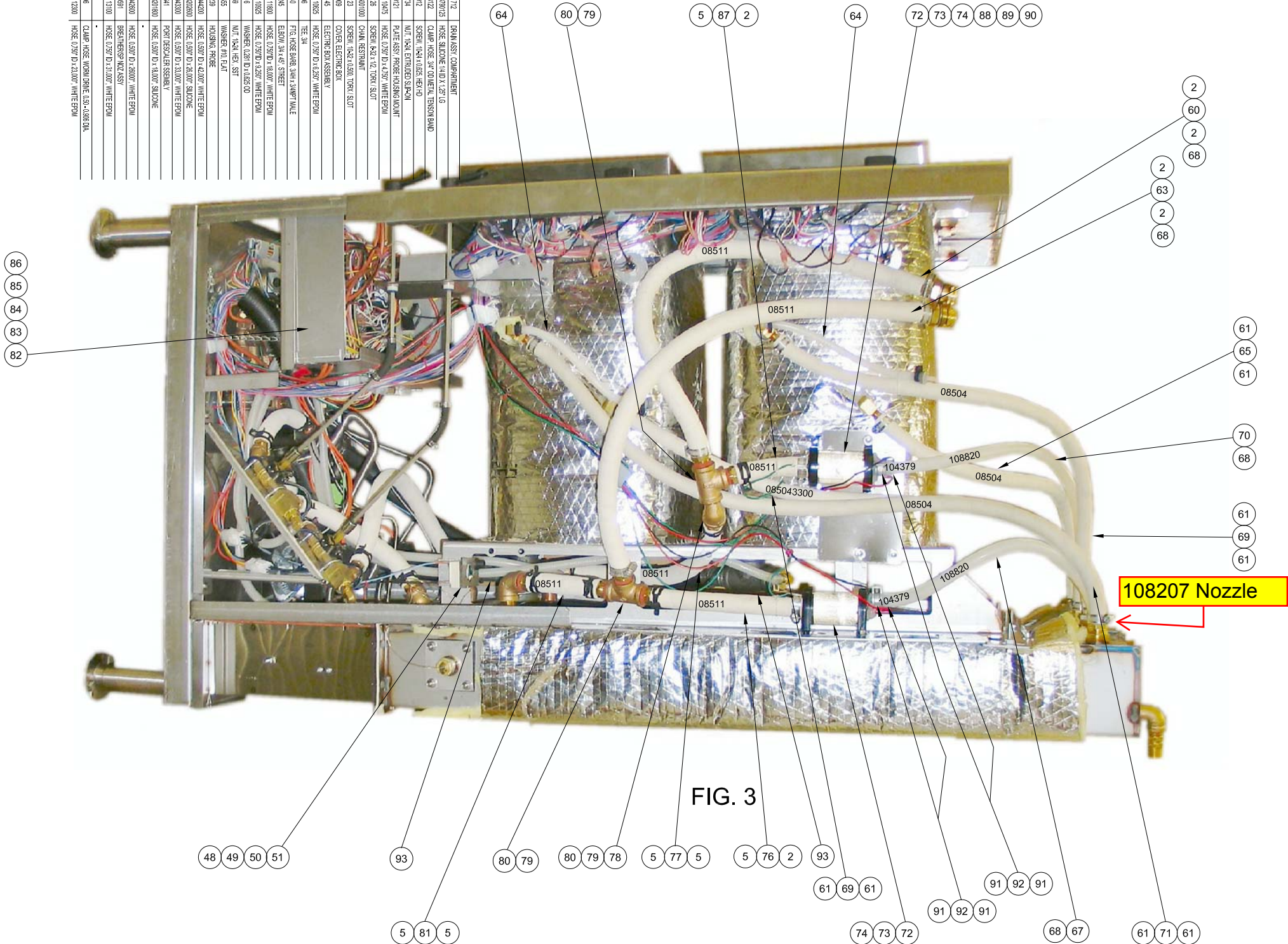
	17	18	19	18	33	14	33
37	1	085112100	HOSE, EPDM, 3/4 ID x 21.00 LG				
36	1	085111100	HOSE, EPDM, 3/4 ID x 11.00 LG				
35	6	03204	CLAMP, WORM DRIVE, 0.812 - 1.500				
34	1	1054693500	HOSE, EPDM, 1.00 ID x 35.00 LG				
33	10	1073121	CLAMP, HOSE, 1/4 ID, METAL TENSION BAND				
32	-	-	-				
31	1	108856	RAIL, LEFT, DRAWER				
30	1	110623	GAS VALVE ASSEMBLY, NATURAL GAS				
		1106231	GAS VALVE ASSEMBLY, LP GAS				
29	4	14618	NUT, HEX, 1/4-20				
28	2	107277	SCREW, HEX HD, 1/4-20 x 0.875				

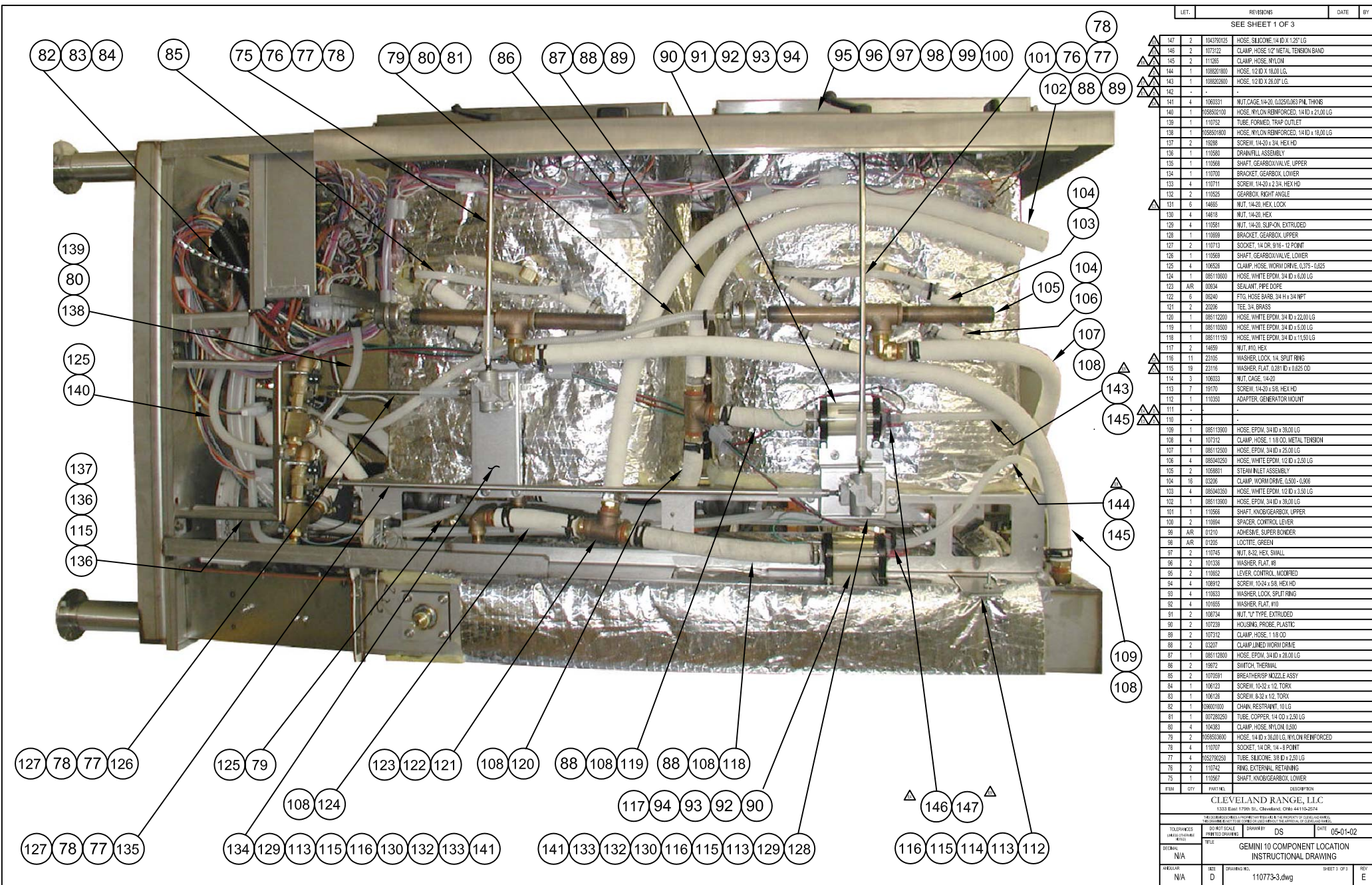


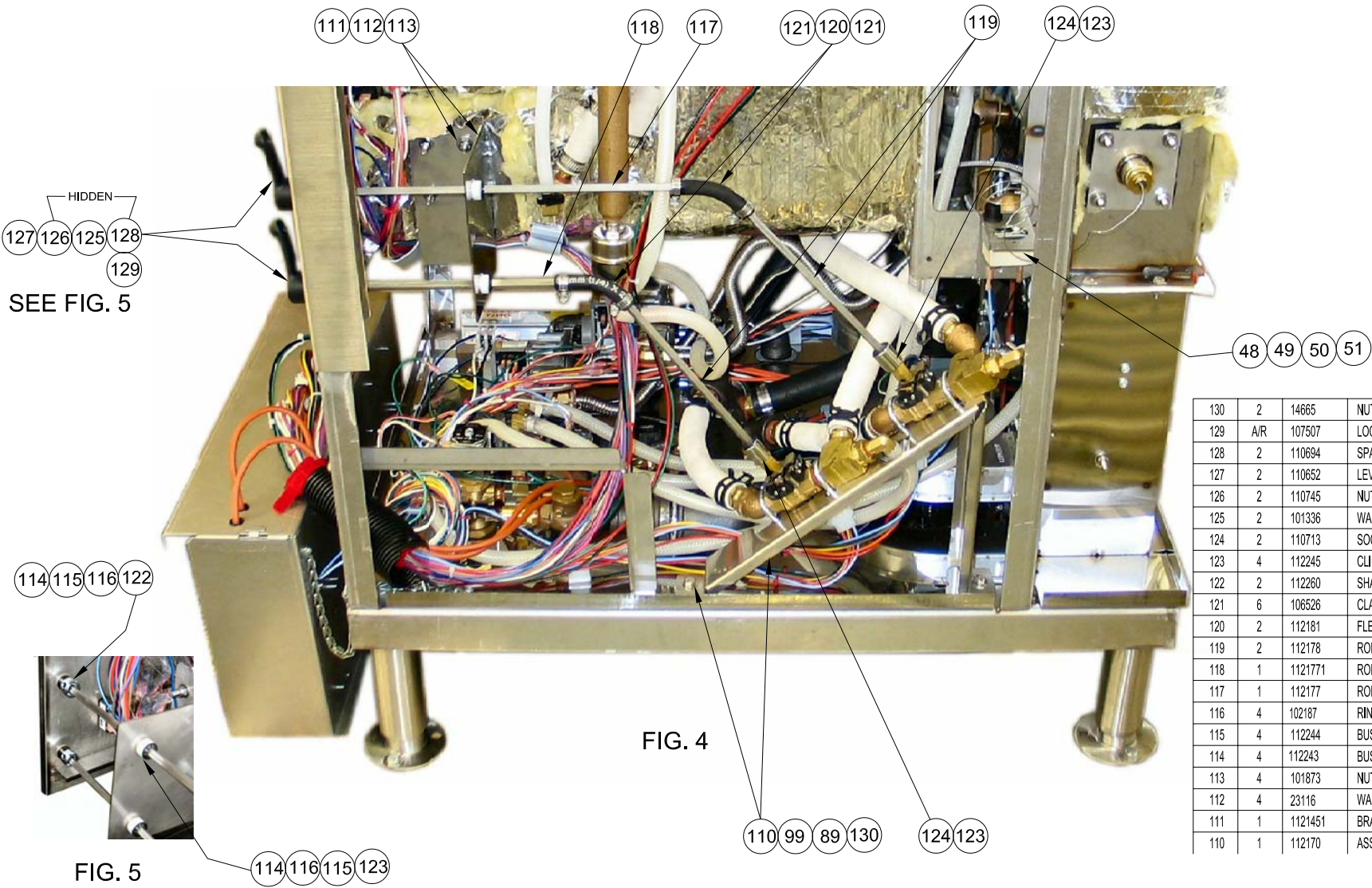
51	4	101873	NUT, HEX, 1/4-20 THIN LOCK
50	4	19170	SCREW, HEX HD, 1/4-20 x 5/8
49	2	109008	BRACKET, MOUNTING, H/LIMIT RESET SWITCH
48	2	108995	ASSEMBLY, RESET SWITCH, H/LIMIT
47	4	14675	NUT, HEX, 3/8-16
46	4	23116	WASHER, FLAT, 0.281 ID x 0.625 OD
45	4	23105	WASHER, LOCK, SPLIT RING
44	4	19175	SCREW, HEX HD, 1/4-20 x 1.50
43	2	FK108015	GENERATOR FINAL ASSEMBLY,
42	1	106123	SCREW, 10-32 x 1/2, TORX (NOT SHOWN)
41	1	108909	COVER, DRAWER (NOT SHOWN)
40	1	300145	ELECTRIC BOX ASSEMBLY

FIG. 2

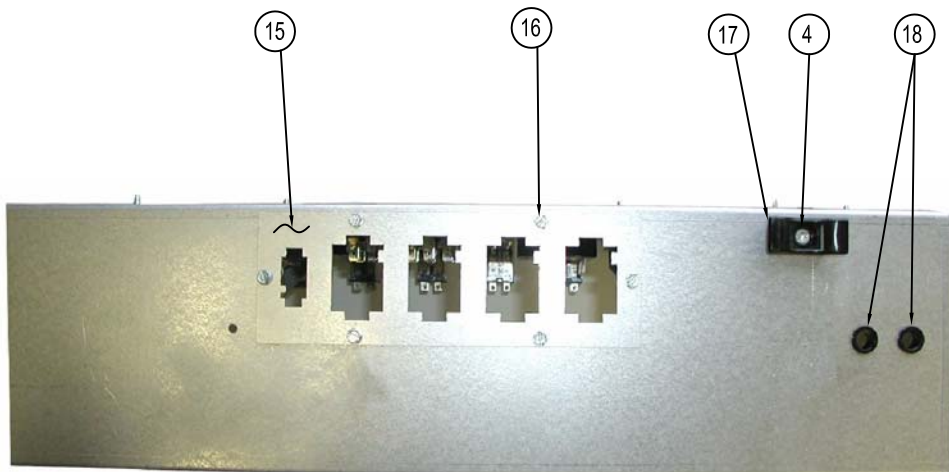
93	2	108172	DRAIN ASSY COMPARTMENT
92	2	108370/25	HOSE, SILICONE 1/4" ID X 1.25' LG
91	4	1073122	CLAMP, HOSE, 3/4" OD METAL TENSION BAND
90	2	108812	SCREW, 1/4"X1.025, HEX HD
89	2	108234	NUT, 1/4"X1.025, HEX HD
88	2	107921	PLATE ASSY HOSE HOUSING IN/OUT
87	1	108174/3	HOSE, 1/2" ID X 4.75' WHITE EPDM
86	1	108175	SCREW, 1/4"X1.02, TORX, SLOT
85	1	10860100	CHAIN RESTRAINT
84	2	108123	SCREW, 1/4"X1.020, TORX, SLOT
83	1	108899	COVER, ELECTRIC BOX
82	1	300145	ELECTRIC BOX ASSEMBLY
81	1	108511035	HOSE, 1/2" ID X 3.50' WHITE EPDM
80	2	28206	TEE, 3/4"
79	6	085240	FTG HOSE, 3/4"X1.25" WHITE
78	1	111245	ELBOW, 3/4"X1.25" STREET
77	1	108511800	HOSE, 1/2" ID X 18.00' WHITE EPDM
76	1	108511035	HOSE, 1/2" ID X 3.25' WHITE EPDM
75	14	23116	WASHER, 1/2" ID X 0.625 OD
74	4	14659	NUT, 1/4"X1.02, SST
73	4	108555	WASHER, 1/4" FLAT
72	2	107229	HOUSING, HOSE
71	1	08504420	HOSE, 1/2" ID X 4.00' WHITE EPDM
70	1	10882280	HOSE, 1/2" ID X 28.00' SILICONE
69	2	08504300	HOSE, 1/2" ID X 33.00' WHITE EPDM
68	2	108941	PORT DISCALER ASSEMBLY
67	1	10882180	HOSE, 1/2" ID X 18.00' SILICONE
66	1	08504300	HOSE, 1/2" ID X 28.00' WHITE EPDM
65	2	1070591	BREATHER, NOZZ ASSY
64	1	08511100	HOSE, 1/2" ID X 31.00' WHITE EPDM
63	1	1070591	BREATHER, NOZZ ASSY
62	1	1070591	BREATHER, NOZZ ASSY
61	8	10208	CLAMP, HOSE, NOZZ DRIVE, 1.50-1.80 DIA
60	1	08511200	HOSE, 1/2" ID X 23.00' WHITE EPDM





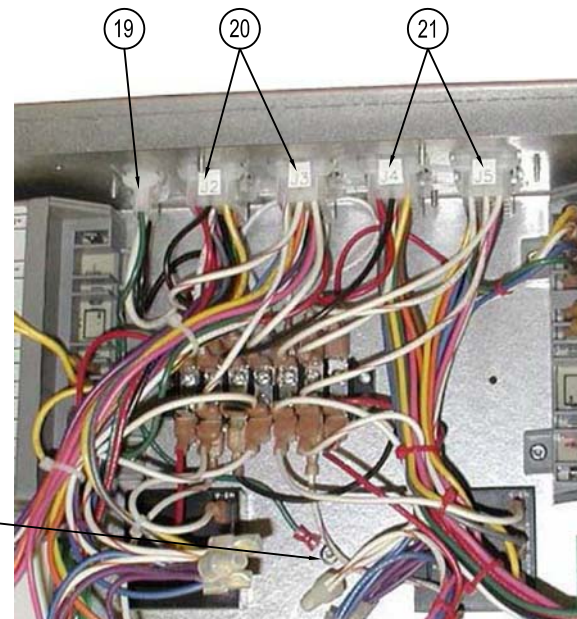


130	2	14665	NUT, HEX, LOCK, 1/4-20, SST
129	A/R	107507	LOCTITE, BLUE
128	2	110694	SPACER, CONTROL LEVER
127	2	110652	LEVER, CONTROL, MODIFIED, 1/4" SQ. BORE
126	2	110745	NUT, HEX, #8-32 SMALL PATTERN, SST
125	2	101336	WASHER, FLAT, #8, SST
124	2	110713	SOCKET, 1/4" DR, 9/16" 12 POINT
123	4	112245	CLIP, RETAINING
122	2	112260	SHAFT COLLAR
121	6	106526	CLAMP, HOSE, WORM DR. 1/4 - 5/8, 5/16" WIDE
120	2	112181	FLEXIBLE LINKAGE HOSE
119	2	112178	ROD, LINKAGE, REAR
118	1	1121771	ROD, LOWER HANDLE
117	1	112177	ROD, UPPER HANDLE
116	4	102187	RING, CRESCENT, RETAINING
115	4	112244	BUSHING, INSERT
114	4	112243	BUSHING, SUPPORT
113	4	101873	NUT, HEX, LOCK, THIN, 1/4-20
112	4	23116	WASHER, FLAT, .281 ID X .625 OD X 0.065 THK
111	1	1121451	BRACKET, LINKAGE SUPPORT
110	1	112170	ASSEMBLY, DRAIN / FILL GEMINI

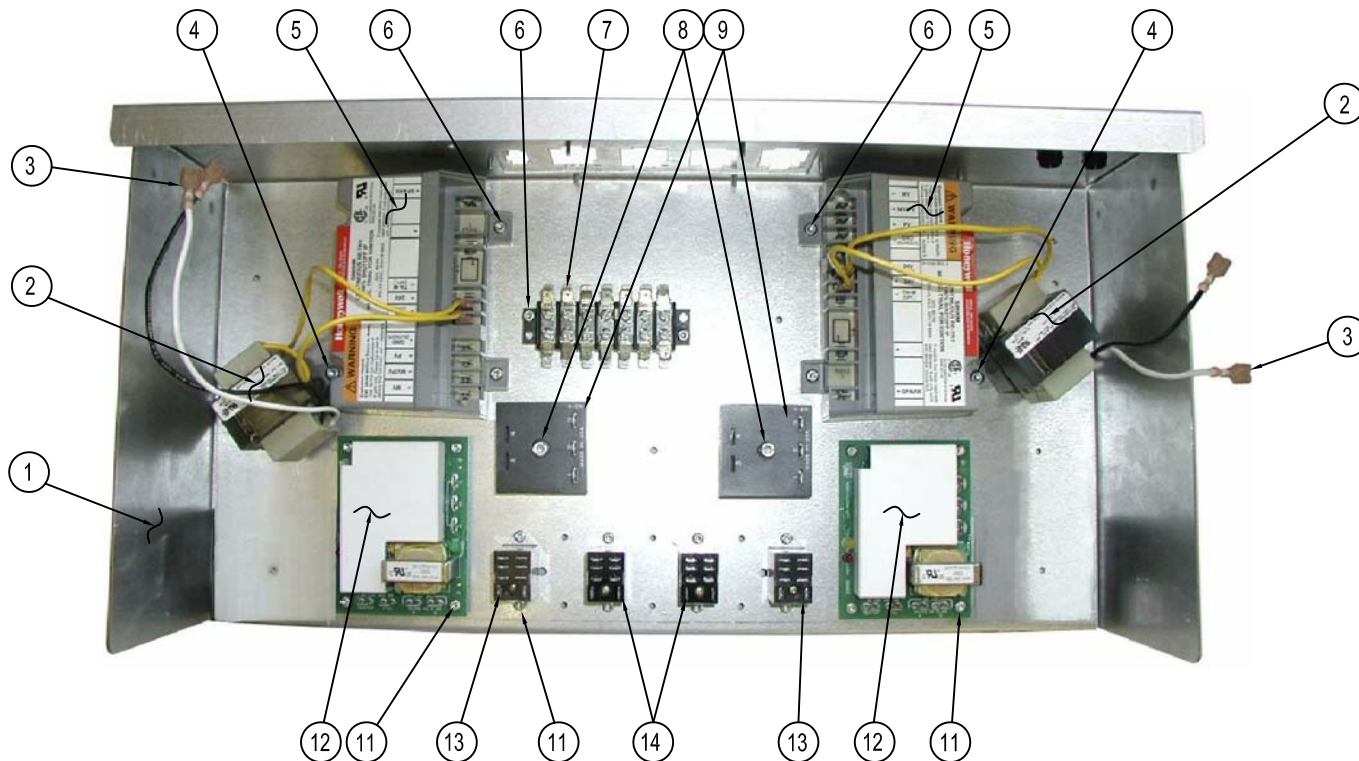


BACK VIEW

300145



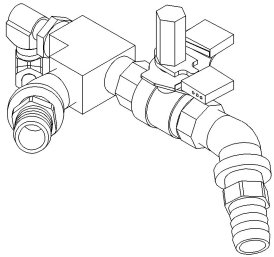
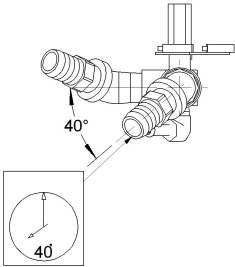
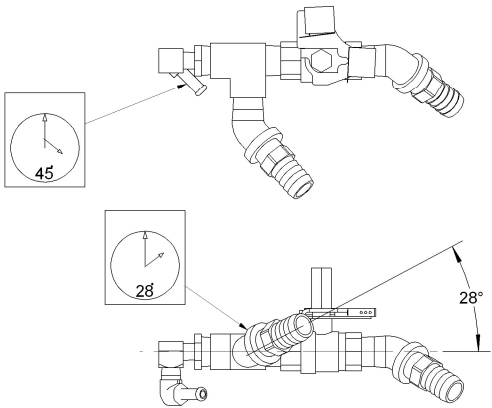
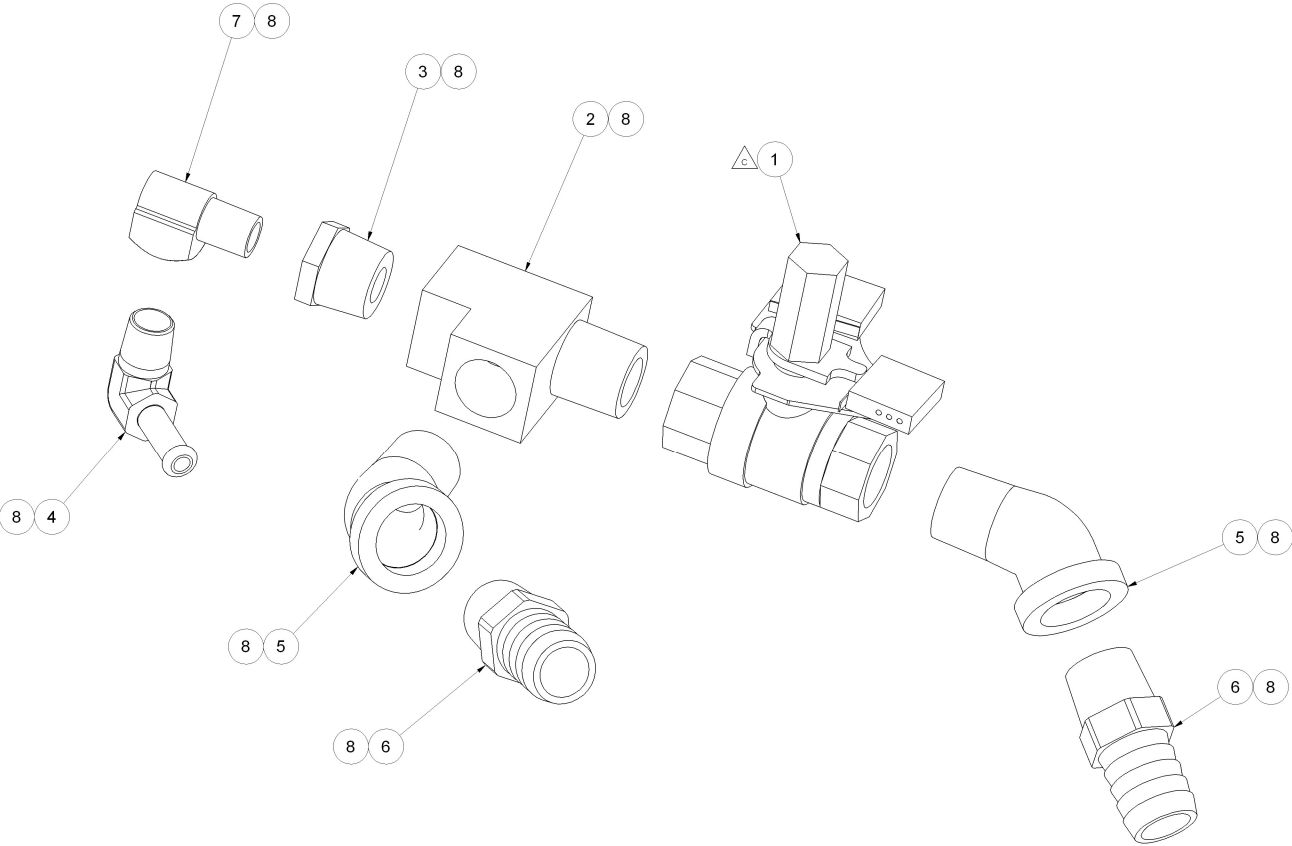
TOP VIEW
(WITH HARNESSSES)



TOP VIEW

21	1	300102	WIRE HARNESS, RIGHT (J4 & J5)
20	1	300101	WIRE HARNESS, LEFT (J2 & J3)
19	1	300100	WIRE HARNESS, MAIN POWER (J1)
18	2	02616	BUSHING, INSULATOR, 3/8
17	1	110656	MOUNT, CABLE TIE
16	6	106754	SCREW, 6-32 X 3/8, HEX/SLOT-WASHER HD, SELF TAP
15	1	110624	PANEL, CONNECTOR, WIRE HARNESS
14	2	105966	RELAY, DPDT-W/MTG TABS, 120V, 50/60HZ, AC
13	2	108285	RELAY, DPDT W/MTG, TABS, 24V, 50/60HZ, AC
12	2	107241	BOARD, WATER LEVEL CONTROL ATMOSPHERIC GENR.
11	16	106127	SCREW, 6-32 x 1/2, TORX, PAN HD, ZINC PLTD
10	-	-	-
9	2	20478	TIMER, SOLID STATE INTERV, 3 MINUTE
8	2	106124	SCREW, 10-32 x 1.000 LG, TORX, PAN HD, ZINC PLTD
7	1	108981	BLOCK, TERMINAL, ASSY, 7 POLE
6	10	106126	SCREW, 8-32 x 1/2, TORX/SLT, PAN HD, ZINC PLTD
5	2	105693	IGNITION CONTROL MODULE, INTERMITTENT PILOT
4	5	106123	SCREW, 10-32 x 1/2, TORX, PAN HD
3	8	20351	TERMINAL, SLIPON, FULL INSUL, 0.250
2	2	20528	TRANSFORMER, 120-24V, 40VA
1	1	111271	DRAWER, COMPONENT

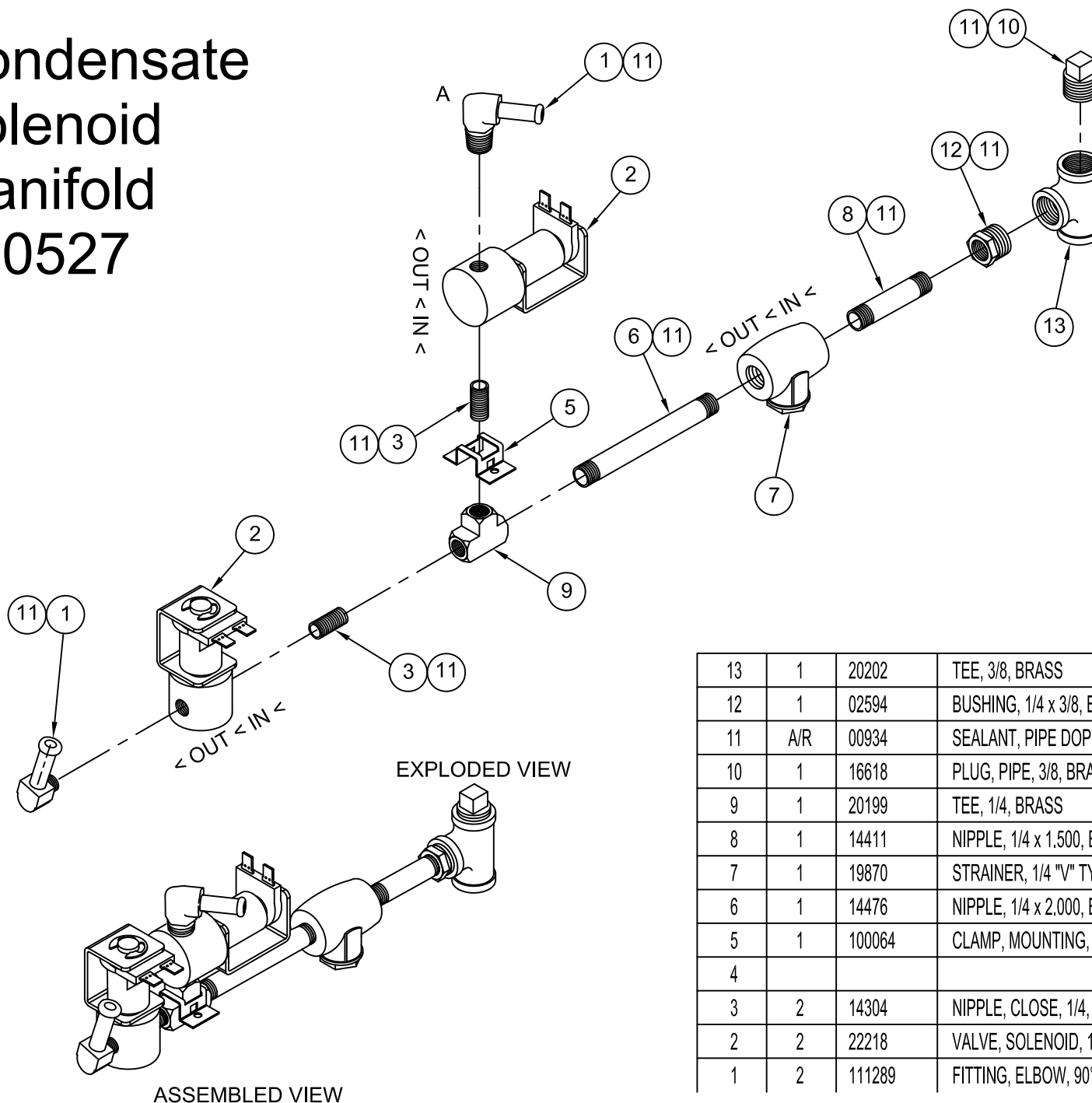
LET.	DESCRIPTION	DATE	BY
A	PRODUCTION RELEASE PER EO# C-7203	02-05-07	LPH
B	PICTORIAL UPDATE FOR ITEM 6, P/N 06241 PER ECR-07-140	4-13-07	IG
C	PICTORIAL UPDATE FOR ITEM 1, P/N 110613, PER ECR-08-312	07-27-09	TJW



8	A/R	00934	SEALANT, PIPE DOPE
7	1	05235	ELBOW, STREET 1/4 X 90° BR, LONG PATTERN
6	2	06241	FTG, HOSE BARB, 3/4HX1/2MPT, BR.
5	2	05223	ELBOW, STREET, 45 DEG., 1/2" NPT, BRASS
4	1	111289	FITTING, ELBOW, 90 1/4" HOSE X 1/4" NPT MALE
3	1	02623	BUSHING, HEX, 1/2 X 1/4, BRASS
2	1	20247	TEE, STREET 1/2"
1	1	110613	BALL VALVE ASSEMBLY, DOUBLE SWITCH
ITEM	QTY	PART NO.	DESCRIPTION

CLEVELAND RANGE, LLC 1333 East 179th St., Cleveland, Ohio 44110-2574			
THIS DESIGN DESCRIBES A PROPRIETARY ITEM AND IS THE PROPERTY OF CLEVELAND RANGE. THIS DRAWING IS NOT TO BE COPIED OR USED WITHOUT THE APPROVAL OF CLEVELAND RANGE.			
TOLERANCES (UNLESS OTHERWISE NOTED)	DO NOT SCALE PRINTED DRAWING	DRAWN BY LPH	DATE 2/2/2007
DECIMAL ± 0.030	TITLE DRAIN/FILL ASSEMBLY, UPPER COMPARTMENT, GEMINI		
ANGULAR ± 1°	SIZE C	DRAWING NO. 112303	SHEET 1 OF 1 REV C

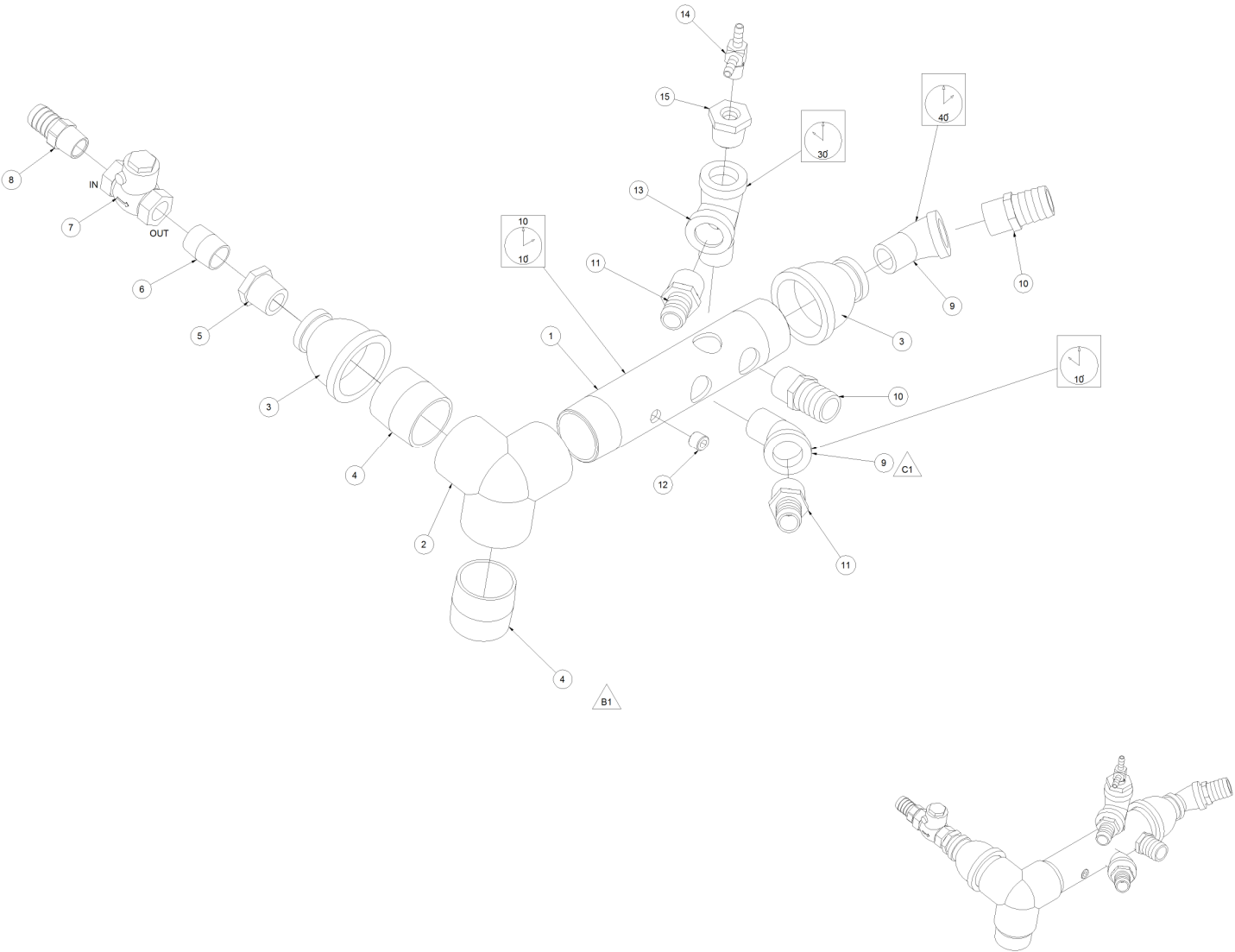
Condensate Solenoid Manifold 110527



13	1	20202	TEE, 3/8, BRASS
12	1	02594	BUSHING, 1/4 x 3/8, BRASS
11	A/R	00934	SEALANT, PIPE DOPE
10	1	16618	PLUG, PIPE, 3/8, BRASS
9	1	20199	TEE, 1/4, BRASS
8	1	14411	NIPPLE, 1/4 x 1,500, BRASS
7	1	19870	STRAINER, 1/4 "V" TYPE
6	1	14476	NIPPLE, 1/4 x 2,000, BRASS
5	1	100064	CLAMP, MOUNTING, 1/4 TEE/ELBOW/TUBE FITTING
4			
3	2	14304	NIPPLE, CLOSE, 1/4, BRASS
2	2	22218	VALVE, SOLENOID, 1/4, N.C., 120 V
1	2	111289	FITTING, ELBOW, 90°, 1/4 HOSE x 1/4 MPT MALE, BRASS

NOTES:

1. ALL THREADED FITTINGS THAT DO NOT HAVE PRE-APPLIED PIPE SEALANT REQUIRE THE USE OF ITEM 16.



LET.	DESCRIPTION	DATE	BY
A	PRODUCTION RELEASE, PER ECR# 07-041	02-08-07	DS
B	1) QTY ITEM 4 WAS 1, PER ECR# 07-041	03-08-07	LPH
C	1) QTY ITEM 9 WAS 1, 2) RENUMBER PART LIST	10-17-07	LPH
-	NOTED ITEM 9 WAS PIN 05259 *PER ECR-07-057*	-	-
D	REV CHANGE DUE TO VAULT RESTRICTIONS, PER ECR-11-121	05-02-11	DS

16	AR	00034	SEALANT, PIPE DOPE
15	1	02262	BUSHING, REDUCING, 3/4x 1/4, BLK
14	1	100508	FITTING, MALE RUN TEE, BRASS 1/4 H X 1/4 MPT X 1/4 H
13	1	100541	TEE, 3/4" MALE RUN, BLACK
12	1	100412	PLUG, PIPE, 1/4-18 NPT, SOCKET HEAD
11	2	06040	FTG. HOSE BARB, 3/4 X 3/4 NPT
10	2	06185	FTG. HOSE BARB, 1/2x3/4 NPT BR.
9	2	05237	ELL, 3/4 STREET, 45 DEG, BLACK
8	1	06241	FTG. HOSE BARB, 3/4x1/2 NPT, BR.
7	1	22149	VALVE, SWING, CHECK, 1/2" NPT
6	1	14323	NIPPLE, 1/2x CLOSE, BLACK
5	1	02595	BUSHING, HEX, 1/2" X 3/4", BLACK
4	2	14382	NIPPLE, 1-1/2" x CLOSE, BLACK
3	2	13616	COUPLING, REDUCING, 1 1/2" NPT X 3/4 NPT
2	1	110591	ELL, SIDE OUTLET, 1-1/2" NPT, BLACK
1	1	110407	MANIFOLD, DRAIN, 10 PAN GEMINI
ITEM	QTY	PART NO.	DESCRIPTION
CLEVELAND RANGE, LLC			
1333 East 179th St., Cleveland, Ohio 44110-2574			
ALL DIMENSIONS UNLESS OTHERWISE SPECIFIED ARE IN INCHES AND DECIMALS THEREOF. TOLERANCES ARE AS SHOWN.			
TOLERANCES UNLESS OTHERWISE SPECIFIED	DO NOT SCALE	DRAWN BY	DATE
MAINTAIN DIMENSIONS		DSchwerzler	2/8/2007
TITLE	ASSY, DRAIN MANIFOLD, GEMINI 10.2		
DECIMAL: ± 0.030	SIZE	DRAWING NO.	SHEET 1 OF 1
ANGULAR: ± 1°	D	112302	REV D

ADD RTV (ITEM 7) AROUND CONNECTION POINTS ON TOP OF PROBE ASSEMBLY AFTER WIRE TERMINALS ARE CONNECTED.

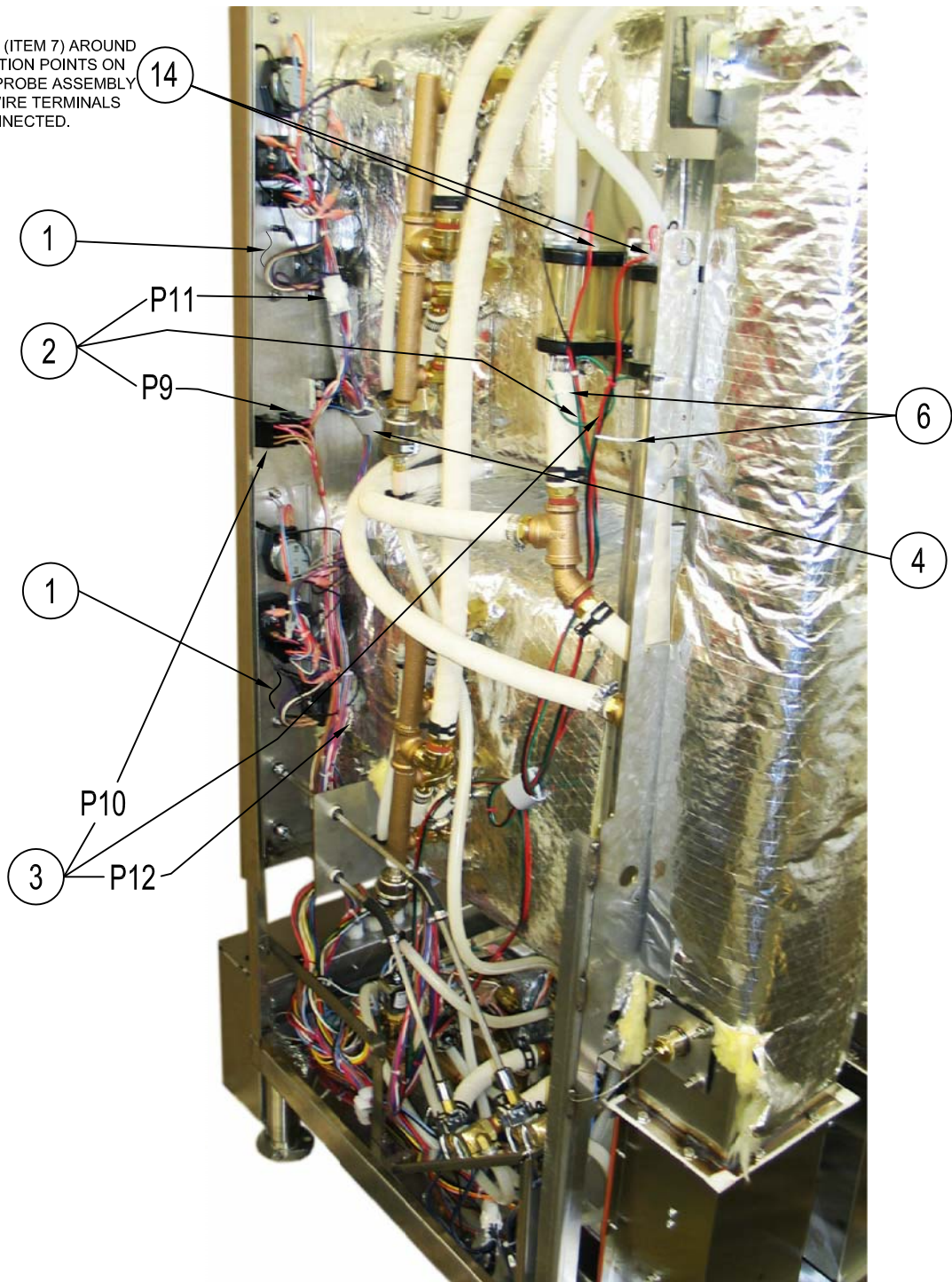
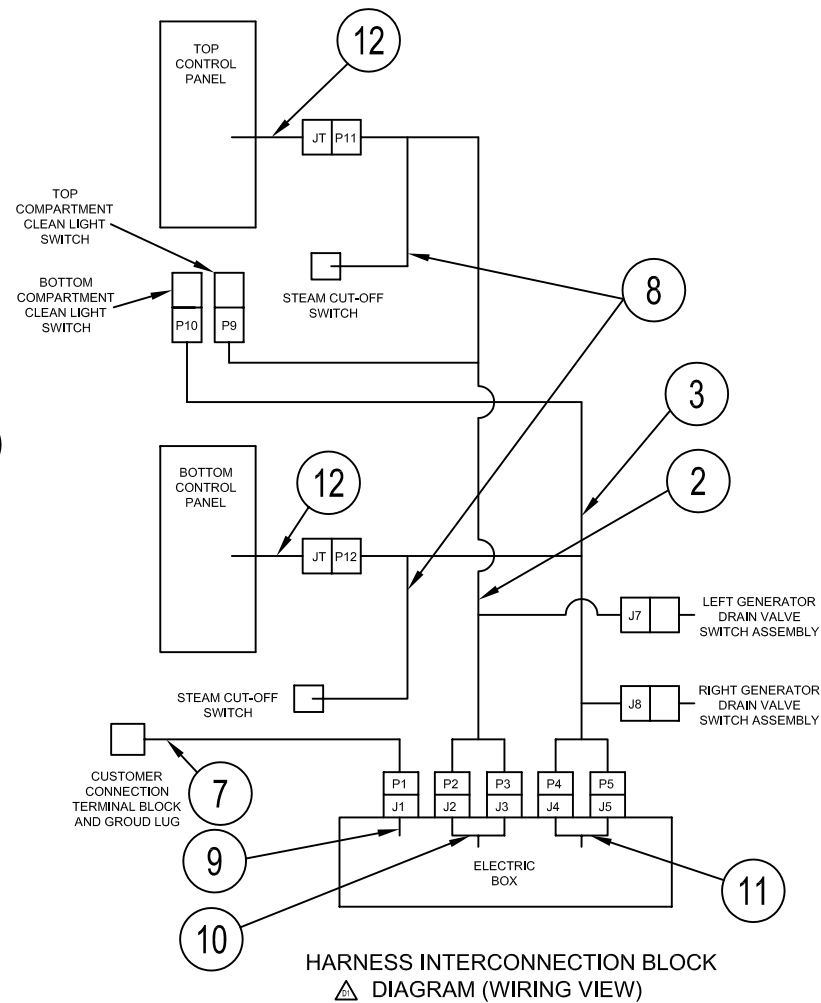


FIG. 1

HINGED LEFT UNIT WITH
MECHANICAL CONTROL PANEL
ASSEMBLIES SHOWN



-	A/R	A/R	A/R	14	00933	SEALANT, RTV, CLEAR, #732
4	-	-	-	13	20370	TERMINAL, SLIP ON, MALE, FULL INSUL, 22-18 GA, AWG
-	2	-	-	12	300126	WIRE HARNESS, CONTROL PANEL, ON/OFF
-	-	2	-	12	300125	WIRE HARNESS, CONTROL PANEL, ELECTRONIC
-	-	-	2	12	300124	WIRE HARNESS, CONTROL PANEL, MECHANICAL
-	1	1	1	11	300102	WIRE HARNESS, RIGHT (J4 & J5), ELECTRIC BOX
-	1	1	1	10	300101	WIRE HARNESS, LEFT (J2 & J3), ELECTRIC BOX
-	1	1	1	9	300100	WIRE HARNESS, MAIN POWER (J1), ELECTRIC BOX
2	-	-	-	8	109946	WIRE HARNESS, MAGNETIC SWITCH
-	1	1	1	7	300143	WIRE HARNESS, WIRE, MAIN POWER (P1)
2	2	2	2	6	20451	CABLE TIE, NYLON
1	1	1	1	5	234321	CLIP, MOUNTING, WIRE/CABLE, 0.750 X 0.750
-	7	7	7	4	23432	CLIP, MOUNTING, WIRE/CABLE, 1.250 X 1.500
-	1	1	1	3	300099	WIRE HARNESS, RIGHT GEN. (P4, P5, J8, P10, P12), LOWER COMP.
-	1	1	1	2	300098	WIRE HARNESS, LEFT GEN. (P2, P3, J7, P9, P11), UPPER COMP.
-	2	-	-	1	300642	ASSEMBLY, CONTROL PANEL, ON/OFF
-	-	2	-	1	300643	ASSEMBLY, CONTROL PANEL, ELECTRONIC
-	-	-	2	1	300639	ASSEMBLY, CONTROL PANEL, MECHANICAL

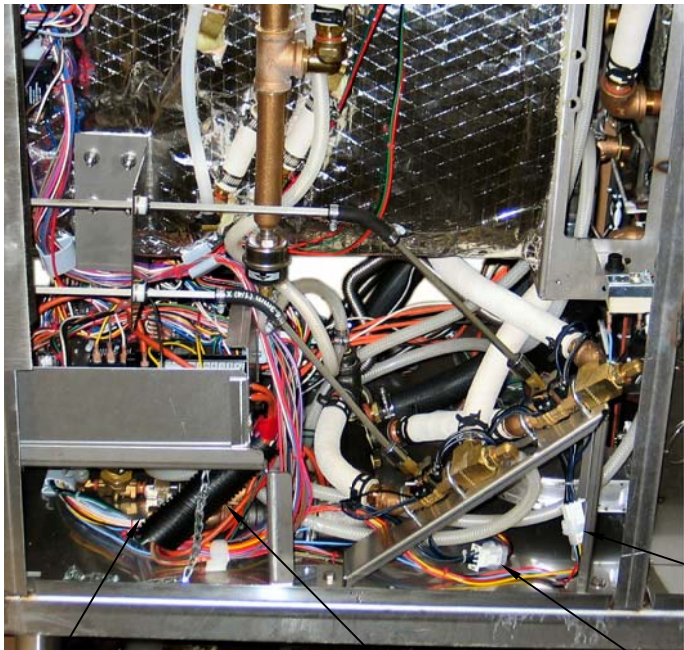


FIG. 2

ADJUST HARNESS TO LIE
BELOW DRIP TRAY DRAIN HOSE
FITTING WITH ELECTRIC BOX IN
PLACE.

J7 (2)

J8 (3)

(16)

A	-	1	1	1	19	300290	WIRE ASSEMBLY, GROUND
	-	1	1	1	18	106123	SCREW, 10-32 X 0.500, TORX/SLOT HD., SELF TAPPING
	-	2	2	2	17	110655	CABLE TIE, (TAK-TY)
	-	1	1	1	16	1106570600	TUBING, LOOM, SPLIT, 6.000
	-	1	1	1	15	110653	CLIP, WIRE BUNDLE, PUSHMOUNT
QTY		QTY	QTY	QTY	ITEM	P/N	DESCRIPTION
H.R.-UNITS		ON/OFF	ELECTRONIC	MECHANICAL			

ADDITIONAL PARTS USED
ON RIGHT HINGED UNITS

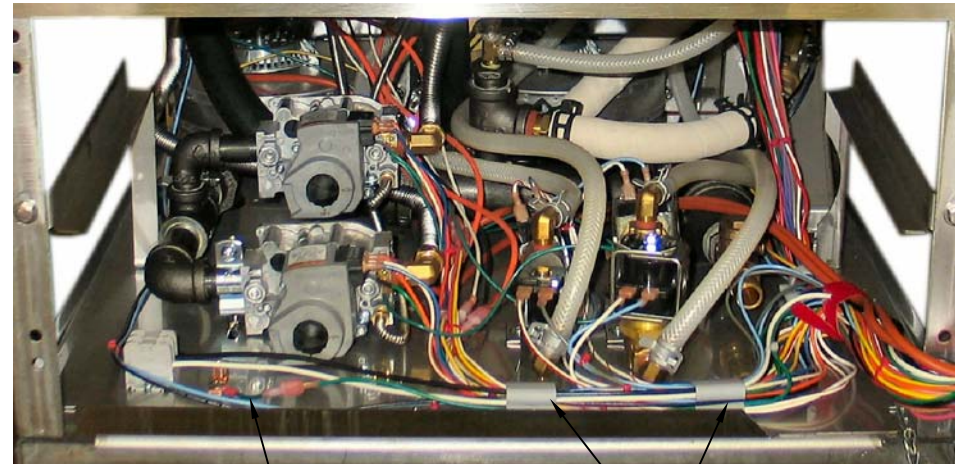


FIG. 3

(4)

(19)

(4)

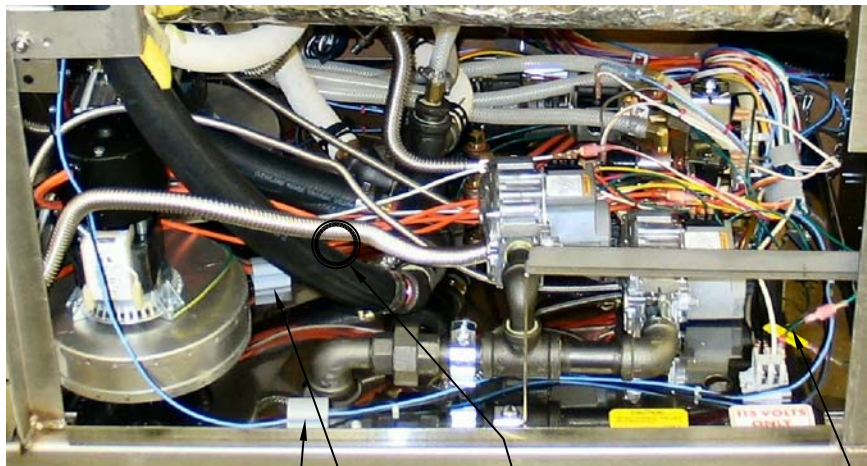


FIG. 4

(5)

(4)

(18)

MOUNT BLOWER GROUND
WIRES (NOT VISIBLE) TO
BASE PAN

(19)

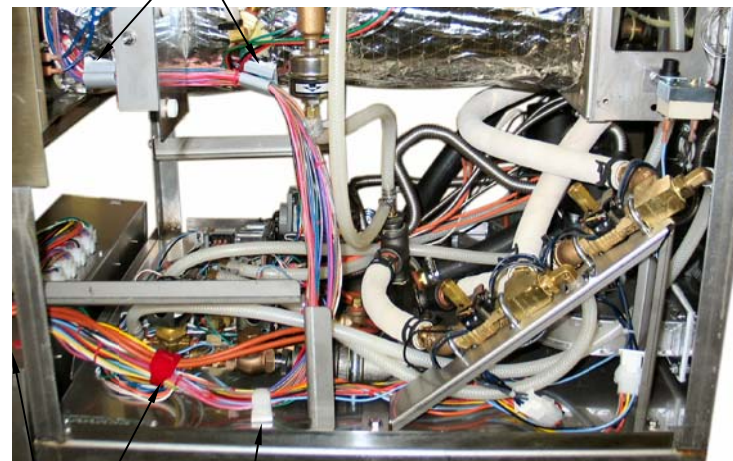


FIG. 5

(17)

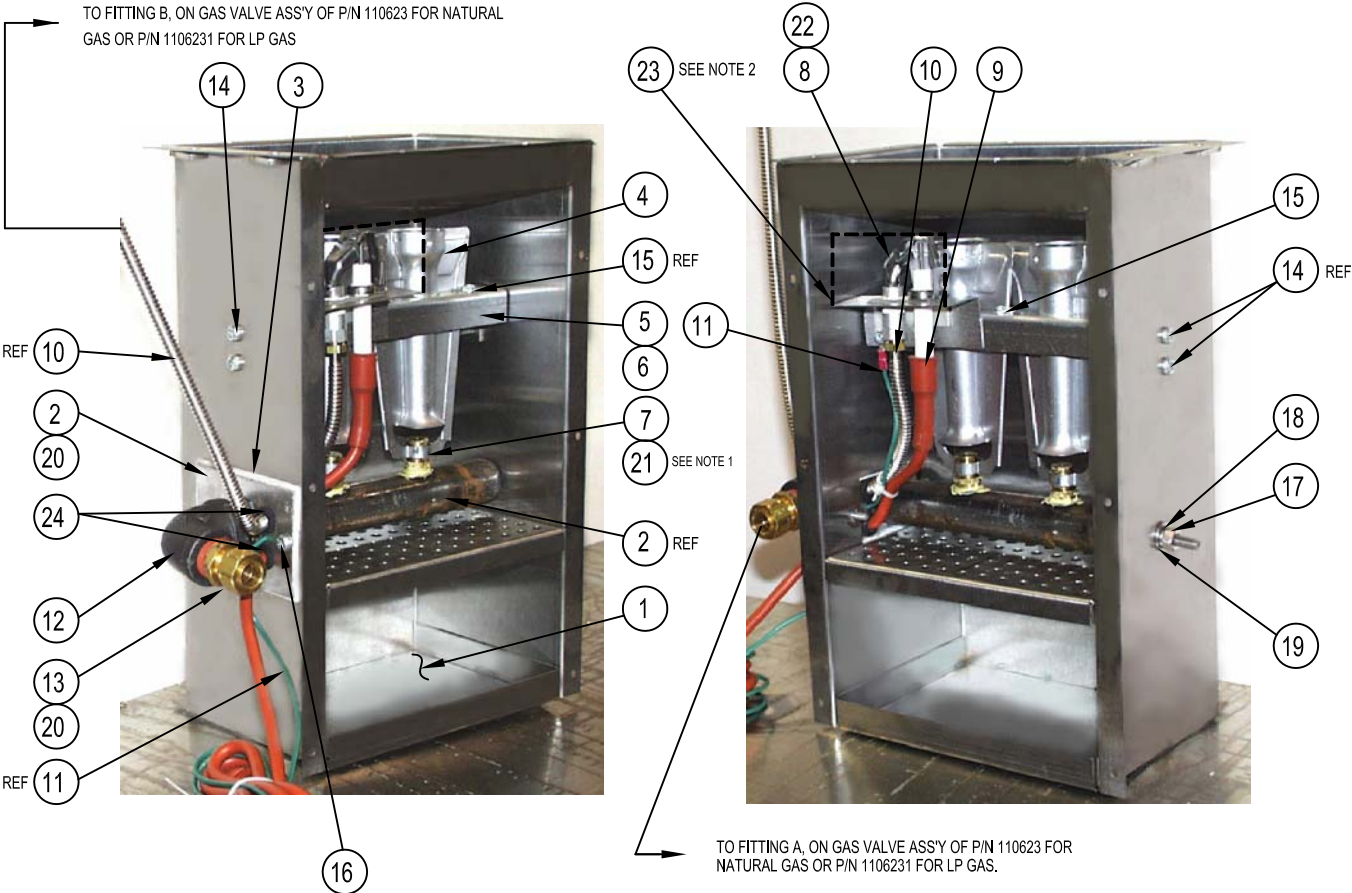
(15)

Boiler to Burner Box Gasket
108898

Burner box gasket 107947

Fan Gasket 110520

- NOTES:
- 1) ORIFICE OPTION- TO BE SELECTED BASED ON ALTITUDE REQUIREMENTS.
 - 2) PILOT BRACKET SHOWN CUT-AWAY FOR CLARITY.
 - 3) CRIMP TERMINAL (TEM 25) TO GROUND WIRE (ITEM 11) AFTER GROUND WIRE (ITEM 11) HAS BEEN INSTALLED INTO BURNER BOX ASSEMBLY.



BURNER BOX ASS'Y
SHOWING MANIFOLD ASS'Y & BURNER ALIGNMENT

ORIFICE CHART NATURAL GAS (REF)				
ALTITUDE	P/N:	QTY	DESCRIPTION	HOLE SIZE
0 - 2999'	110929	2	ORIFICE, #29 DMS, VER GEN	#29(0.136±0.001)
3000 - 6999'	110930	2	ORIFICE, #30 DMS, VER GEN	#30(0.129±0.001)
7000 - 9999'	110931	2	ORIFICE, #31 DMS, VER GEN	#31(0.120±0.001)
10,000 - 11,000'	110932	2	ORIFICE, #32 DMS, VER GEN	#32(0.116±0.001)

ORIFICE CHART LP GAS (REF)				
ALTITUDE	P/N:	QTY	DESCRIPTION	HOLE SIZE
0 - 1999'	1109491	2	ORIFICE, 1.8 MM, VER GEN	1.8 MM (0.071±0.001)
2000 - 3999'	110950	2	ORIFICE, #50 DMS, VER GEN	#50 (0.070±0.001)
4000 - 6999'	110951	2	ORIFICE, #51 DMS, VER GEN	#51 (0.067±0.001)
7000 - 9999'	110952	2	ORIFICE, #52 DMS, VER GEN	#52 (0.064±0.001)
10000 - 11000'	110953	2	ORIFICE, #53 DMS, VER GEN	#53 (0.060±0.001)

SEE NOTE 1		1	1	25	300281	TERMINAL, SLIP-ON, 0.032 X 3/16, 22-18AWG, PART, INSUL
		2	2	24	109129	GROMMET, RUBBER
SEE NOTE 1		1	1	23	108412	BAFFLE, PILOT
		1	-	22	1057841	PILOT ASSY, LP
SEE NOTE 1		-	-	21	-	ORIFICE, LP GAS
		AR	AR	20	00804	SEALANT, PIPE DOPE
SEE NOTE 1		1	1	19	23116	WASHER, FLAT, 1/4 ID X 0.50 OD X 0.065 THK
		1	1	18	23105	WASHER, LOCK, MEDIUM PATT 1/4 KATLINK STYLE, SST
SEE NOTE 1		1	1	17	14618	NUT, 1/4-20, HEX, 300 SST, FULL-FINISHED
		2	2	16	18287	SCREW, PAN HD, 10-24 X 1/2, SST
SEE NOTE 1		3	3	15	101879	SCREW, HEX WASHER HD, THD TYPE F-32 X 1/2, ZN
		4	4	14	106123	SCREW, 10-32 X 1/2, TORX/PAN, THRD FORMING, ZN
SEE NOTE 1		1	1	13	06204	FTG. COMP. 1/2 T X 1/2 MPT
		1	1	12	05271	ELBOW 90° 3/4 X 1/2 BLACK REDUCING
SEE NOTE 1		1	1	11	106145000	WIRE ASSY GREEN, 1 RING, 1 BARE 50.000
		1	1	10	108629	GAS LINE, PILOT GEMINI
SEE NOTE 1		1	1	9	108679	CABLE, IGNITOR ASSY
		-	1	8	1057842	PILOT ASSY, NAT GAS, GEMINI
SEE NOTE 1		-	-	7	-	ORIFICE, NATURAL GAS
		1	1	6	107919	BRACKET, BURNER MOUNTING GEMINI
SEE NOTE 1		1	1	5	107920	CLAMP, BURNER GEMINI
		2	2	4	105781	BURNER, INSHOT, 30,000 BTU VERTICAL BOILER
SEE NOTE 1		1	1	3	105940	GASKET, MANIFOLD VERTICAL BOILER
		1	1	2	107922	MANIFOLD ASSY, WELDMENT, GAS BOILER
SEE NOTE 1		1	1	1	108840	BURNER ASSY, WELDMENT, GEMINI
		QTY	QTY	ITEM	PART NO.	DESCRIPTION
SEE NOTE 1		1106221	110622			
		LP	NAT			

Statement of Responsibilities

This document is for use by experienced and trained Qualified Cleveland Range, LLC Authorized Service Representatives who are familiar with both the safety procedures, and equipment they service.

Cleveland Range, LLC assumes no liability for any death, injury, equipment damage, or property damage resulting from use of, improper use of, or failure to use the information contained in this document.

Cleveland Range, LLC has made every effort to provide accurate information in this document, but cannot guarantee that this document does not contain unintentional errors and omissions.

The information in this document may be subject to technical and technological changes, revisions, or updates.

Cleveland Range, LLC assumes no liability or responsibility regarding errata, changes, revisions, or updates.

Qualified Cleveland Range, LLC Authorized Service Representatives are obligated to follow industry standard safety procedures, including, but not limited to, OSHA regulations, and disconnect / lock out / tag out procedures for all utilities including steam, and disconnect / lock out / tag out procedures for gas, electric, and steam powered equipment and / or appliances

All utilities (gas, electric, water and steam) should be turned OFF to the equipment and locked out of operation according to OSHA approved practices during any servicing of Cleveland Range equipment

Qualified Cleveland Range, LLC Authorized Service Representatives are obligated to maintain up-to-date knowledge, skills, materials and equipment.



SteamCraft® Gemini™ 10

TWO COMPARTMENT FLOOR MODEL DESIGN

PRESSURELESS CONVECTION STEAMER

TWIN, INDEPENDENT GAS-FIRED GENERATORS

Cleveland Standard Features

- Cooking Capacity for up to ten 12" x 20" x 2 1/2" deep Cafeteria Pans, five each compartment.
- Totally independent cooking compartments, each has its own generator, gas valve and water level controls - no shared components
- Exclusive High Efficiency Gas Power Burner (forced air) Generator: Produces more steam for faster cooking while lowering operating costs (72M BTU's per compartment)
- Easy Access Cleaning Port: Each generator has a deliming port located on the outside, top of the unit
- Generator Cleaning Light for each compartment warns the operator to delime generator
- Instant Steam Standby Mode: Holds generator at a steaming temperature, allows unit to start cooking instantly
- Each compartment has one, 60-Minute Electro-Mechanical Timer with load compensating feature. Manual Bypass Switch for constant steaming.
- Durable 14 Gauge, 304 Stainless Steel construction for compartment door, cooking cavity and steam generator
- Exclusive Two-Piece Compartment door: Slammable, self-adjusting door provides and airtight seal, reversible door gasket for extended life
- Exclusive Gemini Drain/Power Control System: Simple, reliable 1/2" ball valve style drain automatically turns power ON/OFF
- Exclusive Brass Steam Jets distribute even-high velocity steam throughout cooking compartment for faster cooking times
- Easy, Front -Access Generator Controls comes with a pullout drawer for simple servicing of unit
- 6" Stainless Steel Adjustable Legs with Flanged Feet
- Approvals: CSA (AGA, CSA) and U.L./NSF#4
- Compartment Steam Shut-Off Switch (SCS)

Options & Accessories

- ☐ Electronic Timer with Compensating Feature (ETC)
- ☐ On/Off Steam Switch Controls, no timer (MC)

MODEL: ☐ 24-CGA-10.2

ITEM NUMBER _____

JOB NAME / NUMBER _____

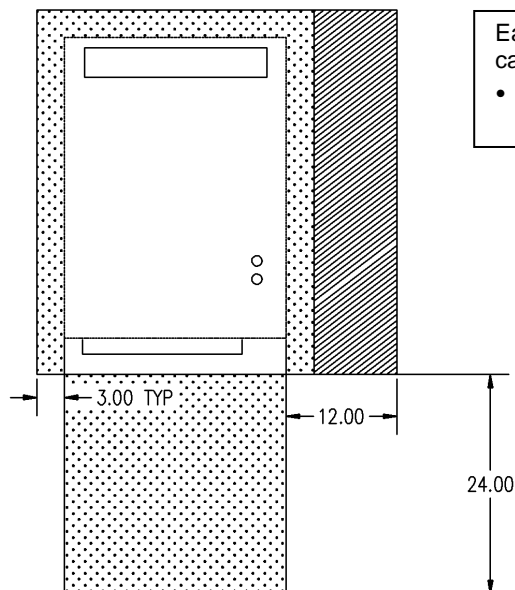
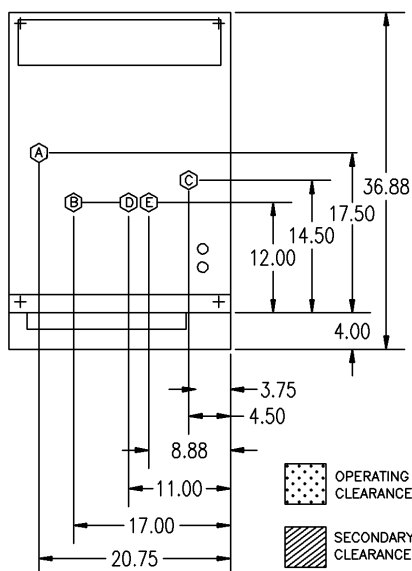


Short Form Specifications

Shall be Two Compartments, Cleveland Convection Steamer series SteamCraft® Gemini™ 10, Model 24-CGA-10.2, Twin Gas Atmospheric Steam Generator, 72M BTU's input per compartment. Independent steam generator, gas valve and water level control system. Automatic Generator Blowdown. Steam Generator with Automatic Water Fill on start up. Exclusive remote probe-type water level controls. Exclusive Brass "Steam Jet" distribution system. Two-piece free-floating compartment door. Type 430 Stainless Steel exterior and cooking compartments. Pullout service drawer for controls and Gemini Drain/Power Control System. Exclusive Cold Water Condenser design. Choice of Compartment Controls. Manual

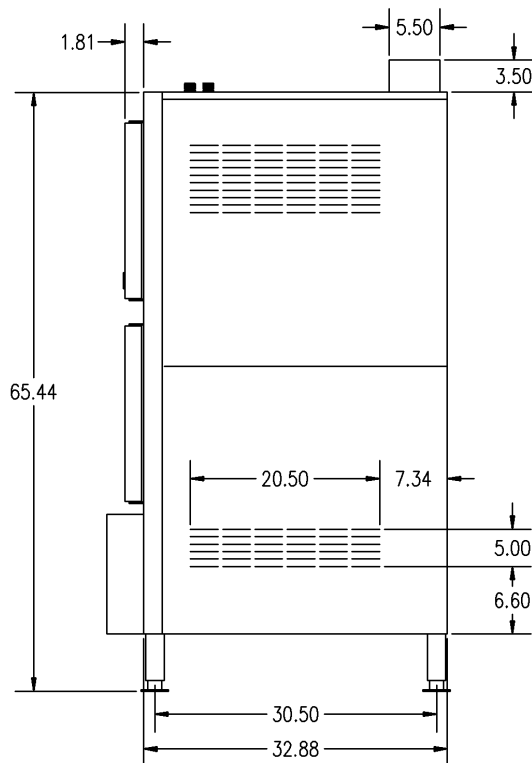
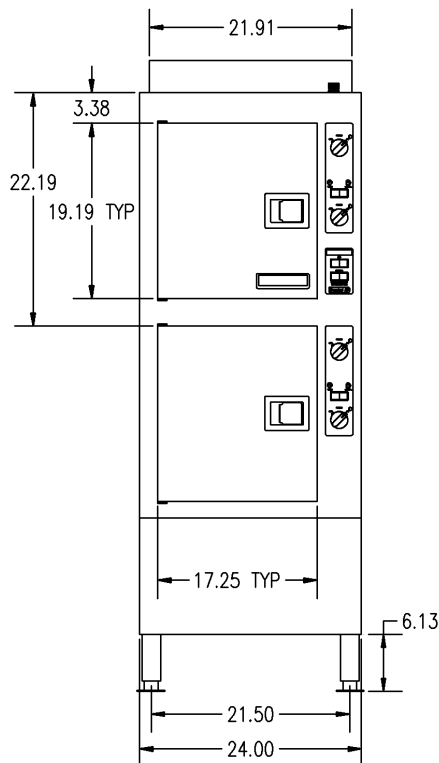
- ☐ Propane Gas (PG)
- ☐ Dissolve® Descale Solution, 6 one gallon container w/quart markings (106174)
- ☐ Water Filters

SECT. **IV** PAGE **13**
0402



Each Compartment has capacity for:

- Five, 12" x 20" x 2½" deep Cafeteria Pans.



WATER QUALITY REQUIREMENTS

The quality of water varies greatly from region to region. Steam equipment generators must be drained daily and chemically descaled periodically to ensure proper operation. To minimize service problems caused by the accumulation of minerals and chemicals in water review the following quality guidelines with a local water treatment specialist. Inlet water that is beyond these specified guidelines should be treated to achieve these acceptable limits. Total Dissolved Solids less than 60 ppm, Alkalinity less than 20 ppm, Silica less than 13 ppm, pH factor greater than 7.5, Chlorine less than 30 ppm.

A GAS			B ELECTRIC	C COLD WATER	CLEARANCE	D DRAINAGE
1½" IPS line size, ¾" (13mm) connection			120V-1Phase, 60 Hz.	35 psi minimum	Right - 3", Left - 3", Rear - 3"	1½" dia.
NATURAL	PROPANE	BTU	2 Blowers & Controls	60 psi maximum	(12" on control side if adjoining wall or equipment is over 30" high for service access)	Do not connect other units to this drain
Piping ¾" N.P.T.	Piping ¾" N.P.T.	72,000 each	150 watts each	One (E) 1/4" dia. NPT for Generator	Contact factory for variances to clearances.	Drain must be vented
Supply pressure 4.50" W.C. Min.	Supply pressure 11.00" W.C. Min.	Generator, 144,000 total		One (D) 1/4" dia NPT for Condenser		Do not use PVC pipe
14.00" W.C. Max.	14.00" W.C. Max.					
Manufacturer must be notified if unit will be used above 2,000 feet						

NOTES:

Cleveland Range reserves right of design improvement or modification, as warranted.
Many regional, state and local codes exist and it is the responsibility of the owner and installer to comply with the codes.
Cleveland Range equipment is built to comply with applicable standards for manufacturers. Included among those approval agencies are UL/NSF#4 and CSA (AGA, CGA).

(NOT TO SCALE)
SECT. **IV** PAGE **14**
0402
Litho in U.S.A.

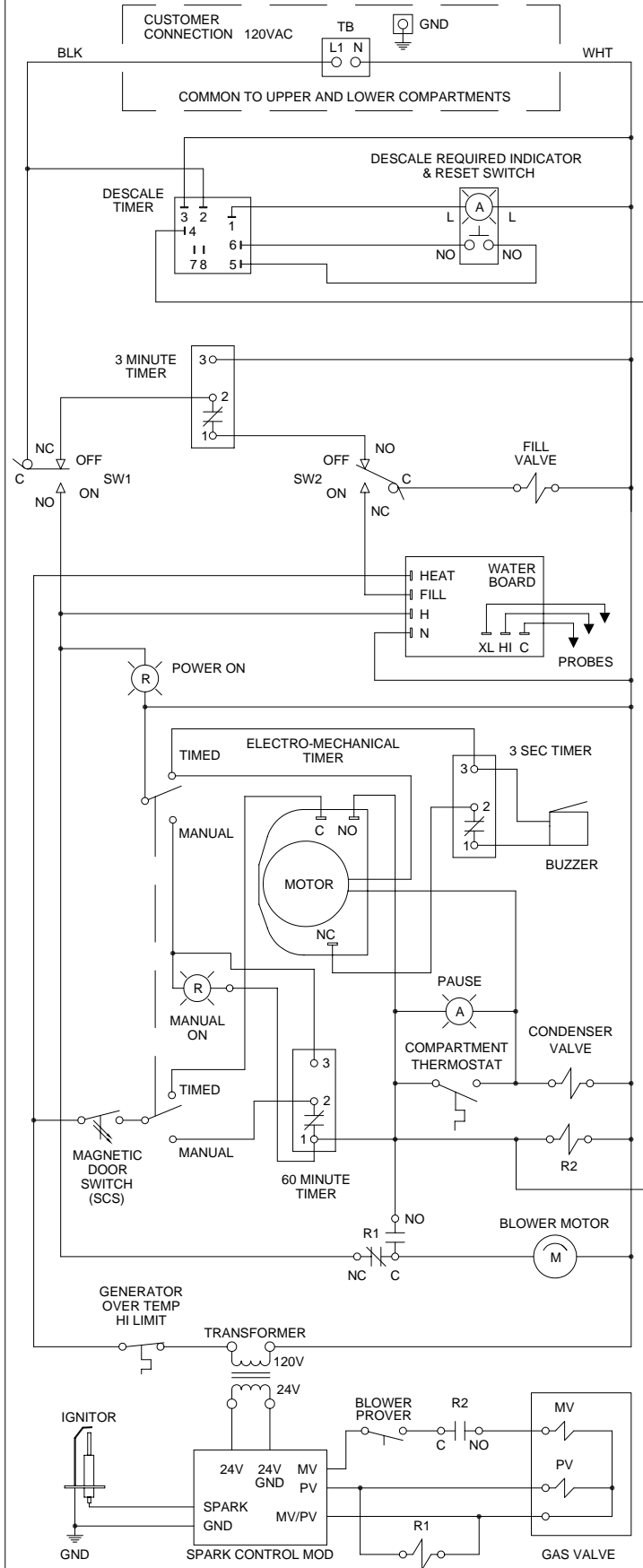
CLEVELAND RANGE GEMINI 24CGA 6.2
AND 24CGA10.2
SEQUENCE OF OPERATIONS
Mechanical Timer

Starting with the timed manual switch in the timed position, and no time on the timer.

1. To turn the unit on, turn the ON/OFF lever clockwise to the ON position
 - This mechanically closes the drain.
 - The red “Power On” indicator is energized.
 - 115 VAC is sent through the timer to the three-second timer, which activates the buzzer for three seconds.
 - 115 VAC is sent through the normally closed R1 contacts to the fan motor, turning it ON
 - 115 VAC is sent to H and N of the water level board
2. With the water level board energized and no water in the generator
 - 115 VAC is sent from the FILL terminal to the fill solenoid.
 - The fill solenoid opens and the generator fills.
3. The water fills to the low probe shorting it to ground
 - 115 VAC is sent from the HEAT terminal to the timed manual switch.
 - 115 VAC is sent through the high limit to the primary of the 24VAC transformer.
 - The water continues to fill until the water level reaches the high probe then 115 VAC is removed from the FILL terminal and the fill solenoid is turned off
4. 24VAC is sent to the ignition module.
 - Spark is sent to the igniter.
 - 24VAC is sent to the pilot coil of the gas valve and the coil of the R1 relay.
 - The normally closed R1 contacts open, turning off the fan
 - The pilot lights, which acts as a standby heater. When the pilot is ignited and the module detects 1.0 micro amps DC, the MV terminal on the module is energized it remains in this standby heat mode until a cooking compartment is turned “ON” (see step 5).
5. When the timed/manual switch is in the timed position and time is on the timer or the timed manual switch is set to the manual position:
 - 115 VAC is sent to the clean light timer.
 - When the clean light timer times down 115 VAC is sent to the clean light switch.
 - When the clean light switch is depressed the timer is reset.
 - 115 VAC is sent from the compartment timer through the door switch to the normally closed contacts of the compartment thermostat and R2 relay coil.
 - The “Sure Cook” light is energized.
 - 115 VAC is also sent from the door switch through the now closed contacts of the R1 relay to the fan motor.
 - The fan motor turns ON, and comes up to speed.

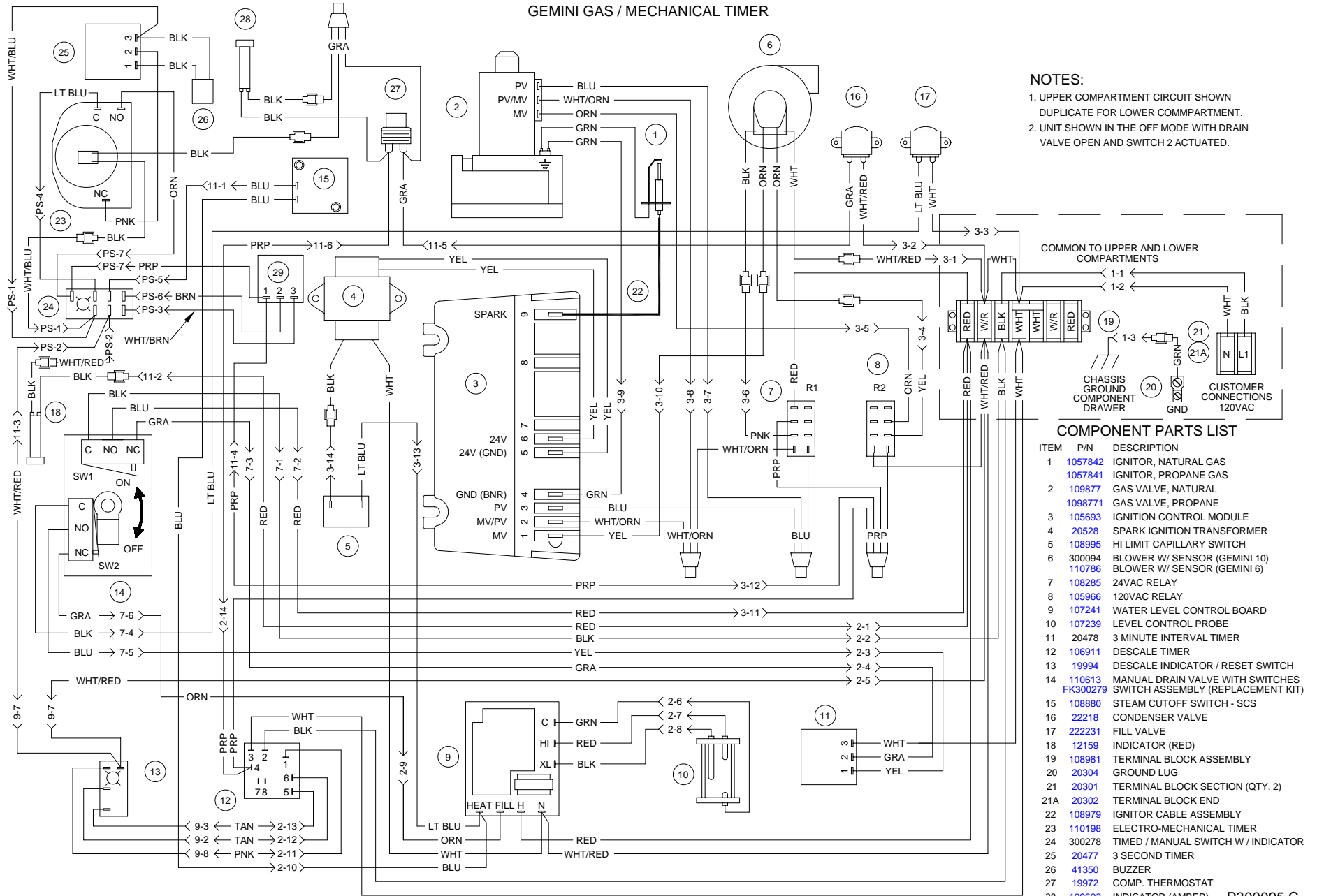
- The fan prover switch makes allowing 24 VAC to the normally open R2 contacts.
 - The normally open R2 contacts close and 24 VAC is sent to the main coil of the gas valve.
 - The main burner is ignited and the water heated to steam.
 - Steam enters the cabinet and the compartment thermostat closes at 193 degrees.
 - The “Sure Cook” light is de-energized.
 - If in the timed mode, 115 VAC is sent to the timer motor and the timer begins counting down.
 - The condensate solenoid is energized sending cold water down condensate spray nozzle pulling the steam around the product and down the drain.
6. When the timer times out or the unit is switched to the timed mode (with no time on the timer) from the manual mode, 115 VAC is sent to the 3 second timer and then to the buzzer for 3 seconds.
7. Whenever the water level drops below the high probe for 5 seconds 115 VAC is sent to the FILL terminal again.
8. When the on/off lever is turned off :
- The drain is mechanically opened, and the generator begins to drain.
 - The red “Power On” indicator light is de-energized.
 - 115 VAC is sent to the 3-minute timer and the fill solenoid is energized for 3 minutes flushing the drain.

GEMINI GAS - MECHANICAL TIMER



SINGLE COMPARTMENT SHOWN
DUPLICATE FOR SECOND COMPARTMENT

GEMINI GAS / MECHANICAL TIMER



NOTES:

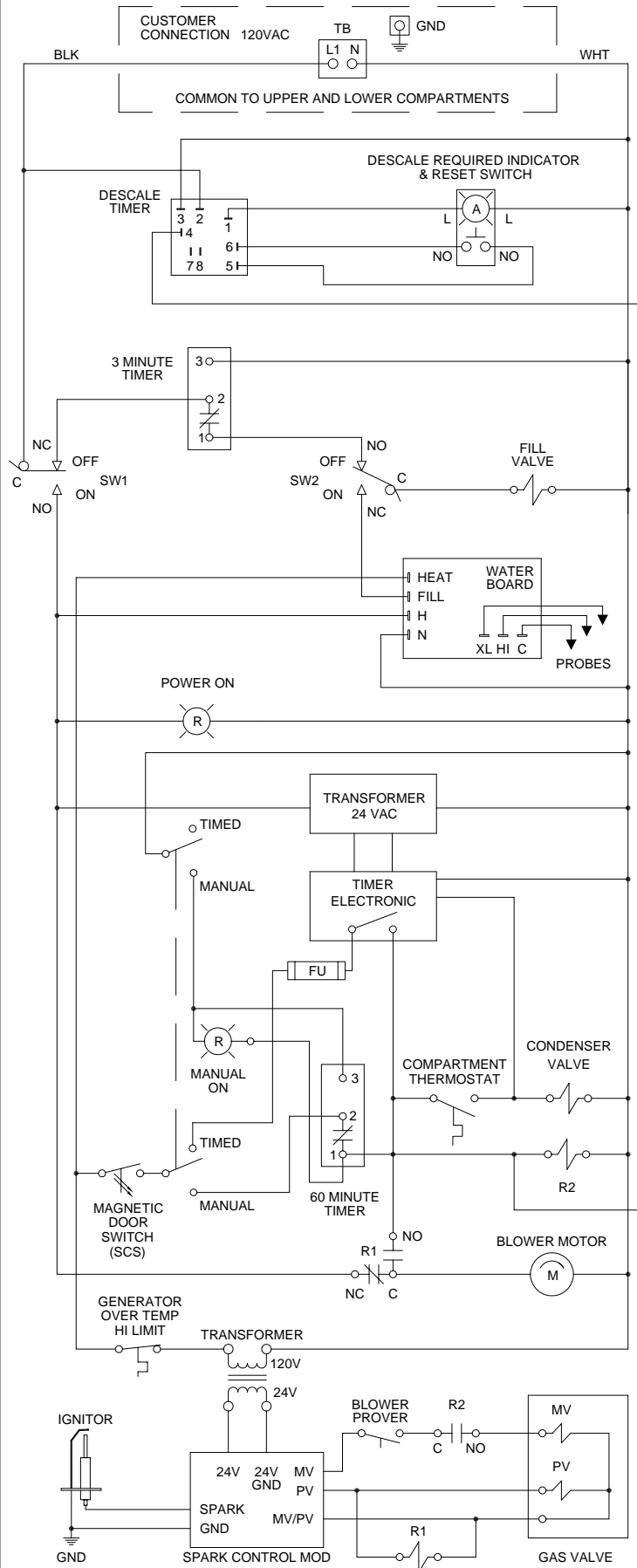
1. UPPER COMPARTMENT CIRCUIT SHOWN
DUPLICATE FOR LOWER COMPARTMENT.
2. UNIT SHOWN IN THE OFF MODE WITH DRAIN
VALVE OPEN AND SWITCH 2 ACTUATED.

COMPONENT PARTS LIST

ITEM	P/N	DESCRIPTION
1	1057842	IGNITOR, NATURAL GAS
	1057841	IGNITOR, PROPANE GAS
2	109877	GAS VALVE, NATURAL
	1098771	GAS VALVE, PROPANE
3	105693	IGNITION CONTROL MODULE
4	20528	SPARK IGNITION TRANSFORMER
5	108995	HI LIMIT CAPILLARY SWITCH
6	300094	BLOWER W/ SENSOR (GEMINI 10)
	110786	BLOWER W/ SENSOR (GEMINI 6)
7	108285	24VAC RELAY
8	105966	120VAC RELAY
9	107241	WATER LEVEL CONTROL BOARD
10	107239	LEVEL CONTROL PROBE
11	20478	3 MINUTE INTERVAL TIMER
12	106911	DESCALE TIMER
13	19994	DESCALE INDICATOR / RESET SWITCH
14	110613	MANUAL DRAIN VALVE WITH SWITCHES
	FK300279	SWITCH ASSEMBLY (REPLACEMENT KIT)
15	108880	STEAM CUTOFF SWITCH - SCS
16	22218	CONDENSER VALVE
17	222231	FILL VALVE
18	12159	INDICATOR (RED)
19	108981	TERMINAL BLOCK ASSEMBLY
20	20304	GROUND LUG
21	20301	TERMINAL BLOCK SECTION (QTY. 2)
21A	20302	TERMINAL BLOCK END
22	108979	IGNITOR CABLE ASSEMBLY
23	110198	ELECTRO-MECHANICAL TIMER
24	300278	TIMED / MANUAL SWITCH W / INDICATOR
25	20477	3 SECOND TIMER
26	41350	BUZZER
27	19972	COMP. THERMOSTAT
28	109602	INDICATOR (AMBER)
29	300150	60 MINUTE TIMER

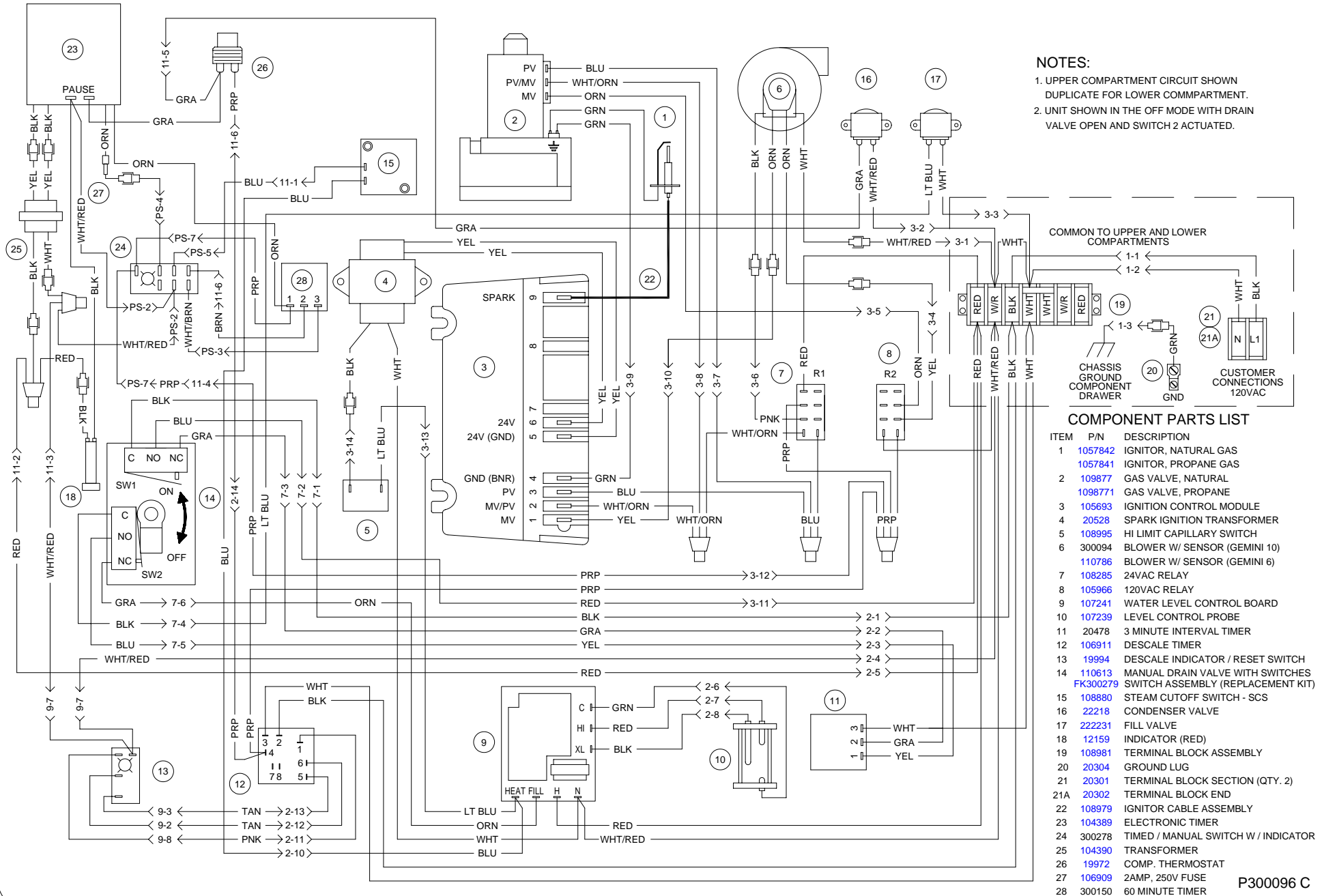
P300095 C

GEMINI GAS - ELECTRONIC TIMER

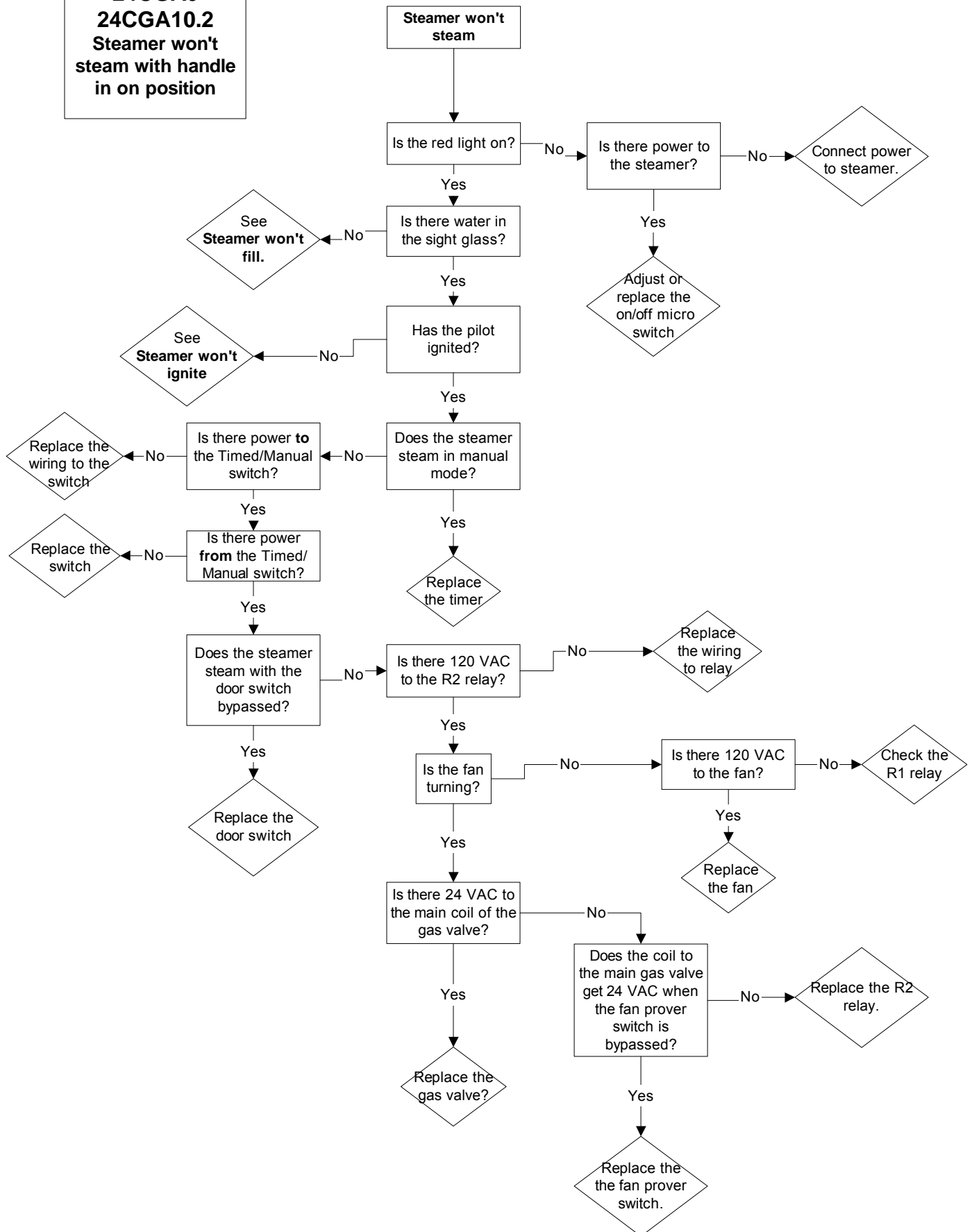


SINGLE COMPARTMENT SHOWN
DUPLICATE FOR SECOND COMPARTMENT

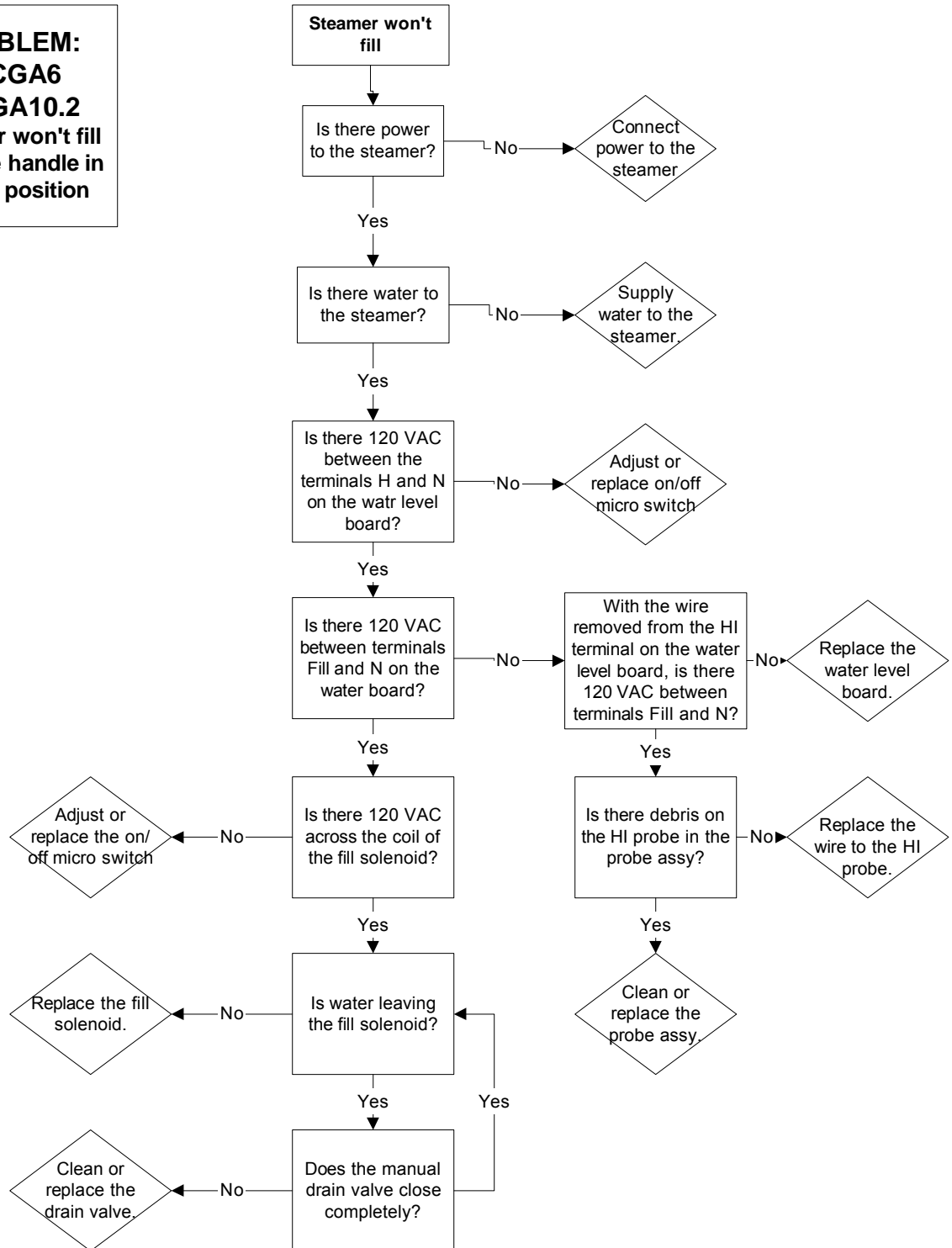
GEMINI GAS / ELECTRONIC TIMER



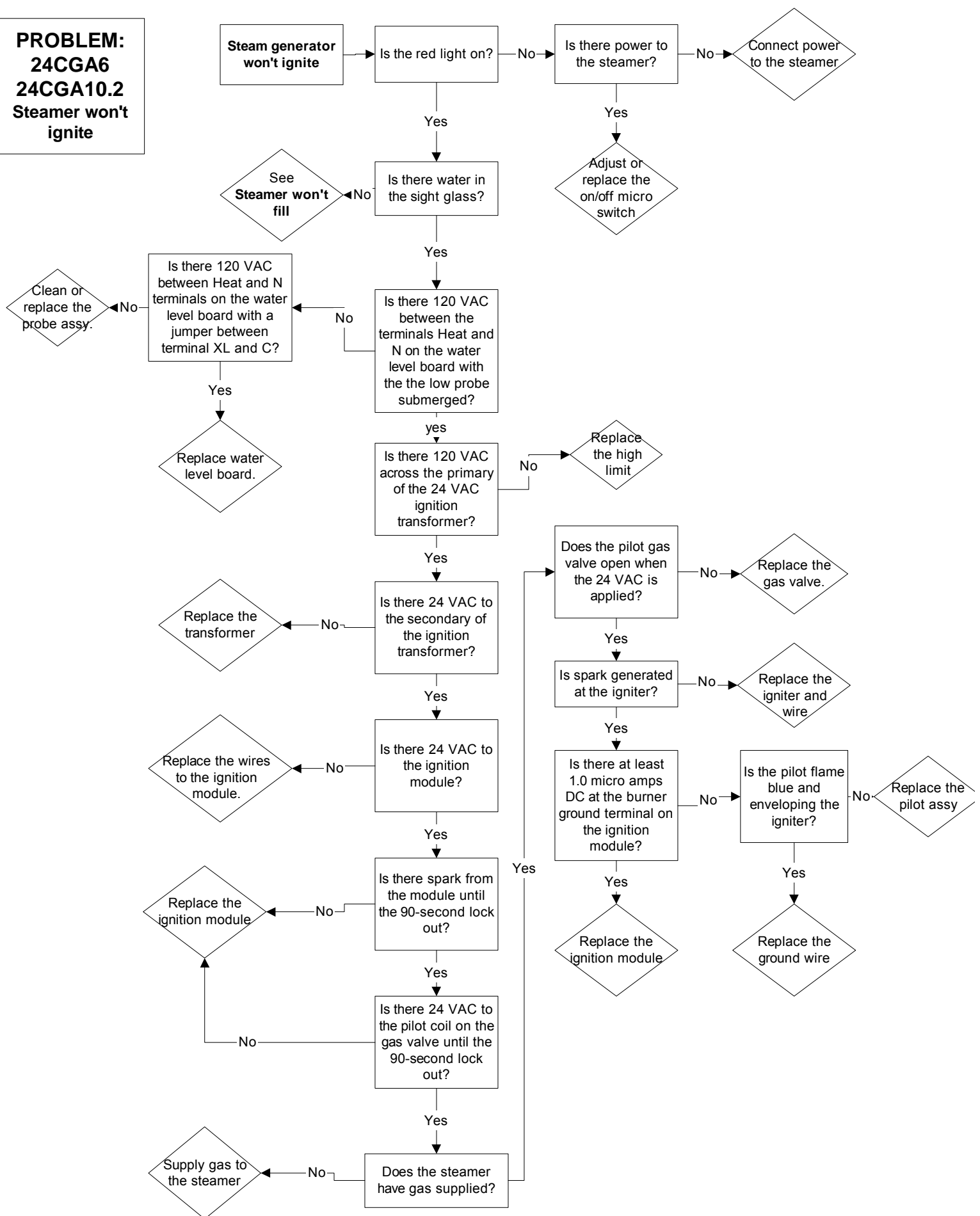
PROBLEM:
24CGA6
24CGA10.2
 Steamer won't
 steam with handle
 in on position



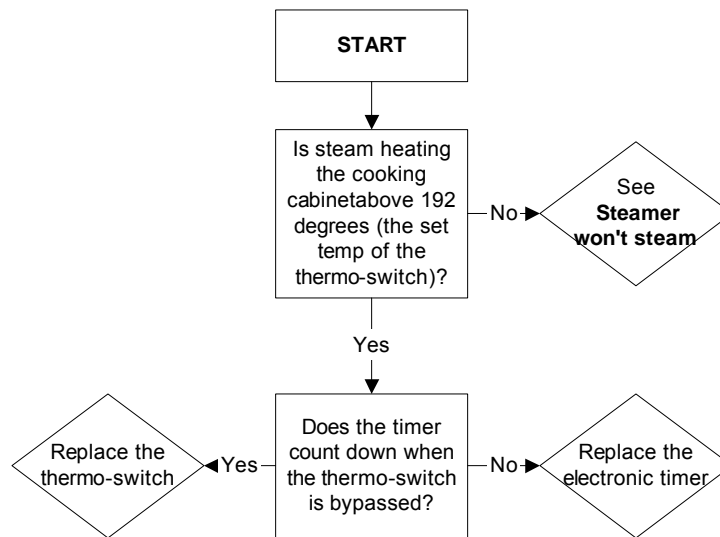
PROBLEM:
24CGA6
24CGA10.2
Steamer won't fill
with the handle in
the on position



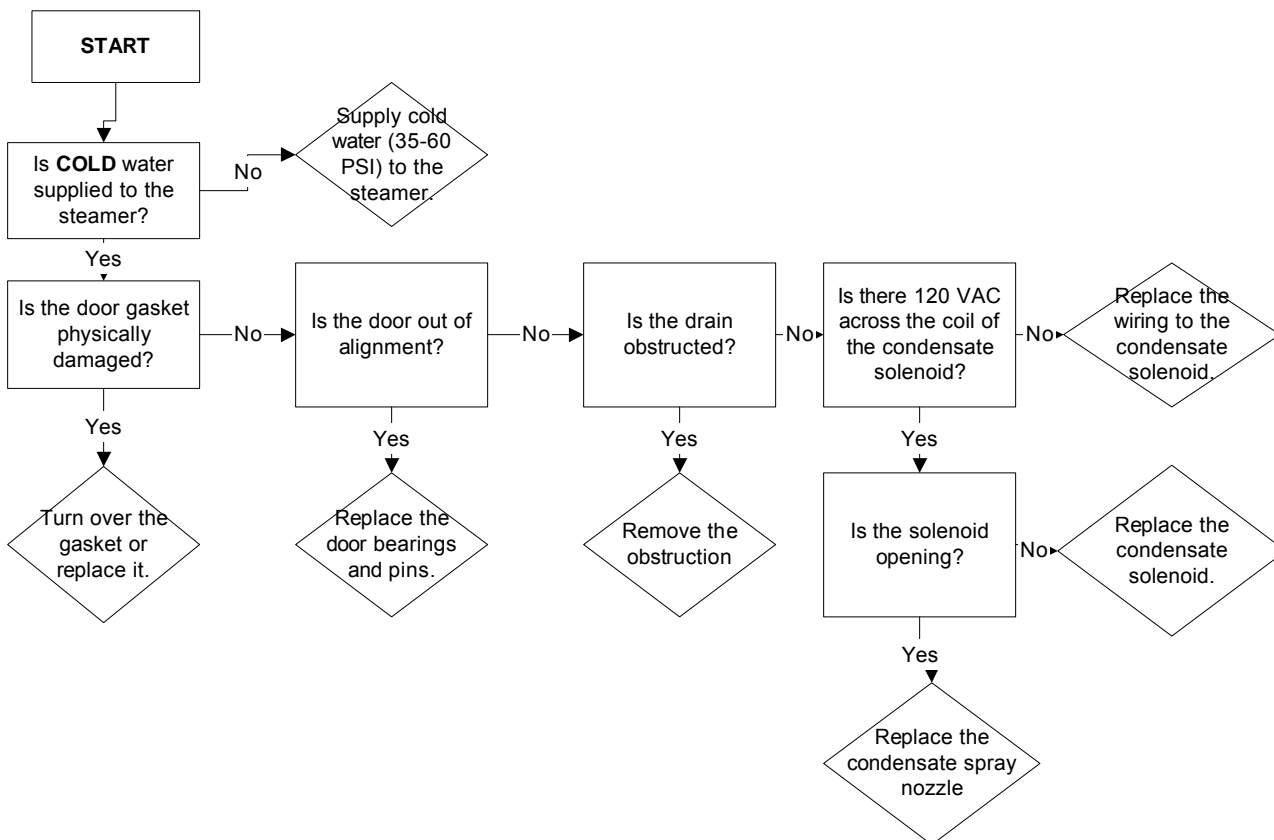
PROBLEM:
24CGA6
24CGA10.2
Steamer won't ignite



PROBLEM:
24CGA6, 24CGA10.2
Electronic timer displays "PAUS" and won't count down



PROBLEM:
24CGA6, 24CGA10.2
Steam leaks around the door.





Cleveland

Descaling Procedure-SteamCraft Ultra and Gemini Series

How Much DISSOLVE to Use

Model	Dissolve
Ultra 3	1/2 Gallon
Ultra 5	1 Gallon
Ultra 10 (Elec.)	1 Gallon (ea.)
Ultra 10 (Gas)	1½ Gallon
Gemini 6 & 10	1 Gallon (ea.)

1. Turn the unit OFF and open the doors:

This will drain and rinse the generator for about 3 minutes.

2. Turn the unit power back On:

The generator will begin to refill with water.

3. Select Timed with the Timed/Manual switch:

DO NOT start the timer, since you do not want to heat the water during descaling. Leave the doors open.

4. Remove descaling port cap and add with the specified amount of DISSOLVE: (See chart above)

Do this while the unit is refilling. The generators can take-up to 8 minutes to refill.

5. After refill has stopped, add extra tap water into the descaling port until liquid is seen entering the cooking cabinet. Note: Ultra 10 gas will have liquid coming out of the drain,

Adding extra water when descaling will raise the descaling solution higher than the normal fill level, allowing the DISSOLVE to work on sensors and surfaces above the water line

Note: Some SteamCraft Ultra models (the electric powered Ultra 10 and Gemini 6 and 10, for example) have two generators and two descaling ports. Both units should be descaled at the same time, using this procedure

6. Let the descaler soak in generator for approximately one hour:

7. After one hour, turn the unit power Off: This will drain and rinse the generator for about 3 minutes.



8. After the 3-minute drain cycle completes, turn the unit back ON. After the filling has stopped, add water until liquid enters the cooking compartment (or drain for the ultra 10 gas), and then turn the unit OFF. This will drain and flush any residue from the water level control assembly. **Replace descaling cap.**

9. After the 3 minute drain cycle completes, Turn the unit ON and set the Timer for 20 minutes: Make sure the Time/Manual switch is in the timed setting and the doors are closed.

10. When the timer times out (after 20 minutes) turn the power Off:

This will drain and rinse the generator for about 3 minutes.

This ends the descaling procedure. You can now turn the unit back on and resume normal startup and cooking operations.