

INSTALLATION AND OPERATION INSTRUCTIONS

CUSTOM BACK BAR CABINET — SELF CONTAINED AND REMOTE

MODEL NOS.

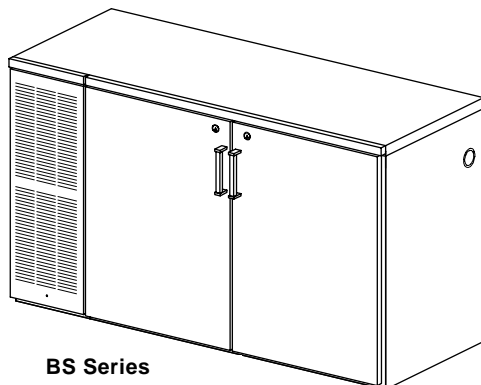
BS Series



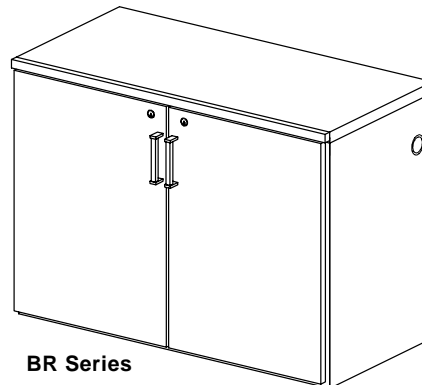
BR Series



ANSI / NSF #7



BS Series



BR Series

IMPORTANT INFORMATION

Fill out the enclosed warranty card and mail to the Perlick Corporation to register the warranty. If the card is not returned, the warranty period will begin from the date the equipment is shipped from the factory.

This manual has been prepared to assist you in the installation of your Cabinet and to acquaint you with its operation and maintenance.

We dedicate considerable time to ensure that our products provide the highest level of customer satisfaction. If service is required, your dealer can provide you with a list of qualified service agents. For your own protection, never return merchandise for credit without our approval.

We thank you for selecting a Perlick product and assure you of our continuing interest in your satisfaction.

WARNING: When lifting, the full weight of the cabinet must be supported. Lift from the cabinet base and not from the top. Improper lifting can result in severe damage to the cabinet.

Table of Contents

PREPARING THE CABINET

Specifications.....	2,3
List of Included Parts.....	4
Tools Required.....	4
Plumbing.....	4
Electrical	4
Uncrating and Inspection.....	4
Placing the Cabinet	4
Leveling the Cabinet.....	4
Installing Casters or Legs	4
Installing the Base Plate.....	4
Refrigeration and Temperature Control	5
Cleaning the Cabinet.....	5
Replacement Parts	6
Cleaning Stainless Steel.....	7
Wiring Diagram.....	8




8300 West Good Hope Road • Milwaukee, WI 53223 • Phone 414-353-7060 • Fax 414-353-7069
Toll Free 800-558-5592 • E-Mail: Perlick@Perlick.com • www.Perlick.com

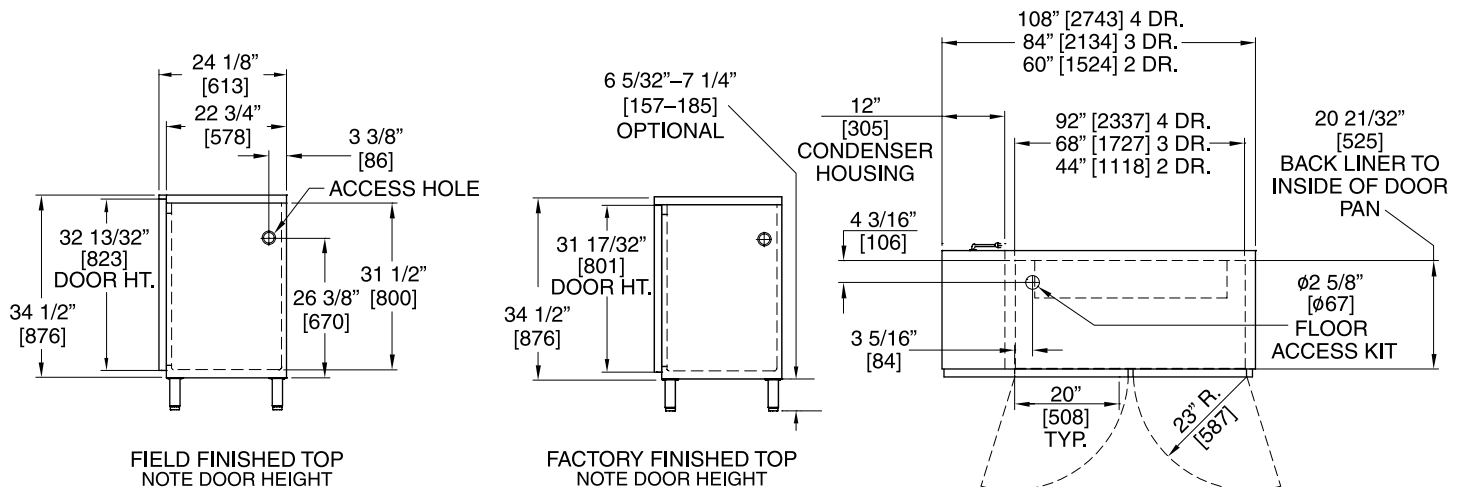
Form No. Z2083A
Rev. 08.03.04

Installation and Operating Instructions

Sizes and Specifications, Standard Back Bar Cabinets – Self Contained

MODEL NOS.		BS2D	BS3D	BS4D
NUMBER OF DOORS		2	3	4
CABINET DIMENSIONS (mm)	Length	60" (1524)	84" (2134)	108" (2743)
	Depth	24 1/8" (613)	24 1/8" (613)	24 1/8" (613)
	Height	34 1/2" (876)	34 1/2" (876)	34 1/2" (876)
CASE CAPACITY*		12.9	20.4	27.7
CONDENSING UNIT H.P.		1/4	1/3	1/3
RUNNING LOAD - AMPS		6.3	8.1	8.3
SHIPPING WIEGHT lbs. (kg.)		380 (172)	490 (222)	630 (286)
INTERIOR	Door Sill: 14 gauge stainless steel supported by a 12 gauge interior angle bracket running entire length of cabinet. Door Pan: High strength polystyrene. Floor Pan: Stainless steel. Walls & Ceiling: Stainless steel interior. Includes pilasters & (2) vinyl coated shelves per door. Includes interior light.			
EXTERIOR	Black: Front and sides are black painted steel. Base panel stainless steel. Back and top unfinished galvanized steel. Stainless Steel: Front, base panel and sides are stainless steel. Back and top are galvanized steel.			
DOOR HINGING	Concealed hinging as illustrated. For special hinging, specify left to right.			
DOOR HARDWARE	Door handles: Black vinyl with chrome ends. Lock finish: chrome.			
REFRIGERATION	R-134a capillary tube-type. Aluminum fin and copper tube evaporator coil. Adjustable temperature control. Self-defrosting, pull-out condensing unit for service and cleaning. Compressor left.			
ELECTRICAL	115 Volt, 60 Hz., 1 phase AC. Furnished with three-prong, six foot rubber cord. Contact Perlick for other voltage/frequency requirements. Also available in 230 Volt, 50 Hz., 1 phase AC. Carries  marking of conformity.			
PLUMBING	None required. Condensate evaporates automatic.			
INSULATION	Foamed-in place polyurethane; 2" walls, 1 1/2" top and floor.			
OPTIONAL ACCESSORIES & MODIFICATIONS	<div style="display: flex; justify-content: space-between;"> <ul style="list-style-type: none"> Leg set Tapping kit Laminated top Laminated ends Laminated grille Compressor right Brass hardware <ul style="list-style-type: none"> Stainless steel top Stainless steel ends Caster sets Base plates Floor access kit <div style="margin-left: 20px;"> Door Finishes Black powder coated Stainless steel Glass door with black frame Glass door with stainless steel frame Glass door with laminated frame Laminated doors (customer's choice) Prepared for field lamination </div> </div>			

*Based on 12 oz. export bottles.

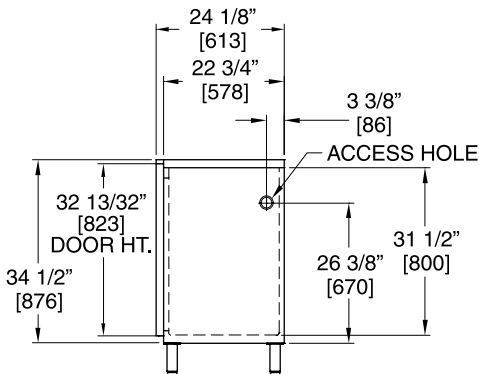


Perlick is committed to continuous improvement. Therefore, we reserve the right to change specifications without prior notice.

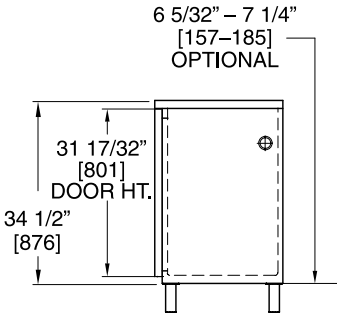
Sizes and Specifications, Standard Back Bar Cabinets – Remote

MODEL NOS.		BR2D	BR3D	BR4D
NUMBER OF DOORS		2	3	4
CABINET DIMENSIONS: (mm)	Length	48" (1219)	72" (1829)	96" (2438)
	Depth	24 1/8" (613)	24 1/8" (613)	24 1/8" (613)
	Height	34 1/2" (876)	34 1/2" (876)	34 1/2" (876)
CASE CAPACITY*		12.9	20.4	27.7
EVAPORATOR BTU/HR		1800	2200	2600
RUNNING LOAD - AMPS		.9	.9	.9
LIQUID INLET LINE SIZE		1/2" O.D.	1/2" O.D.	1/2" O.D.
SUCTION LINE SIZE		3/8" O.D.	3/8" O.D.	3/8" O.D.
SHIPPING WIEGHT lbs. (kg.)		250 (114)	310 (141)	350 (159)
INTERIOR	Door Sill: 14 gauge stainless steel supported by a 12 gauge interior angle bracket running entire length of cabinet. Door Pan: High strength polystyrene. Floor Pan: Stainless steel. Walls & Ceiling: Stainless steel interior. Includes pilasters & (2) vinyl coated shelves per door. Includes interior light.			
EXTERIOR	Black: Front and sides are black painted steel. Base panel stainless steel. Back and top unfinished galvanized steel. Stainless Steel: Front, base panel and sides are stainless steel. Back and top are galvanized steel.			
DOOR HINGING	Concealed hinging as illustrated. For special hinging, specify left to right.			
DOOR HARDWARE	Door handles: Black vinyl with chrome ends. Lock finish: chrome.			
REFRIGERATION	Evaporator can operate with most common refrigerants—exception NH ₃			
ELECTRICAL	115 Volt, 60 Hz., 1 phase AC. Contact Perlick for other voltage/frequency requirements.			
PLUMBING	Independent floor drain or condensate pan evaporator is required. Optional 2 1/8" I.D. floor access kit — left rear corner.			
INSULATION	Foamed-in place polyurethane; 2" walls, 1 1/2" top and floor.			
OPTIONAL ACCESSORIES & MODIFICATIONS	<ul style="list-style-type: none"> • Leg set • Tapping kit • Laminated top • Laminated ends • Laminated grille • Brass hardware • Stainless steel ends 		<ul style="list-style-type: none"> • Stainless steel top • Caster sets • Base plates • Floor access kit • R22 (condensing unit assembly with pressure control) 	Door Finishes Black powder coated Stainless steel Glass door with black frame Glass door with stainless steel frame Glass door with laminated frame Laminated doors (customer's choice) Prepared for field lamination

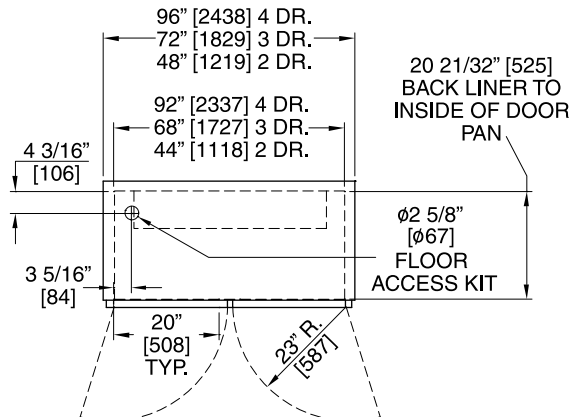
**Based on 12 oz. export bottles.*



FIELD FINISHED TOP
NOTE DOOR HEIGHT



FACTORY FINISHED TOP
NOTE DOOR HEIGHT



General Information – Standard Back Bar Cabinets

Parts List

- (2) Shelves Per Door.
- Interior Lights.
- Shelf Clips.

Tools Required

- #2 Phillips Screwdriver.
- 10" Crescent Wrench.
- $\frac{3}{8}$ " Nut driver.
- $\frac{9}{16}$ " Allen Wrench.
- Power Drill or Driver (*for leg installation*).

Plumbing

Self-contained models: none required.
Condensate evaporates automatically.

Electrical

The cabinet must be connected to a separately fused power source (see electrical specification plate) and grounded in accordance with National and Local Electrical Codes. Caution: Do not attempt to operate the equipment on any other power source than that listed on the Electrical Specification plate.

Uncrating and Inspection

Remove all crating material before operating. Carefully inspect cabinet for hidden damage. If damage is discovered, file your claim immediately with the transportation company. Perlick is not responsible for damage in transit.

Placing the Cabinet

Push the cabinet into place using rollers when necessary. Important: Proper air flow around the condensing unit is necessary for efficient operation. Never obstruct the air flow in and out of the condensing unit compartment.

Leveling the Cabinet

When the cabinet is in place, check installation with a carpenter's level. When perfectly level, accumulated water will drain out. A slight pitch to the drain side will not harm the cabinet. Water may accumulate if cabinet is pitched to the opposite side.

Installing Casters or Legs (Optional)

Attach casters or legs to cabinet bottom in holes provided. Use the supplied $\frac{1}{4}$ "- 20 x $\frac{3}{4}$ " hex head self-tapping machine screws.

Installing Base Plate (Optional)

Attach brackets to cabinet bottom in holes provided. Use #10 self-drilling hex sheet metal screws (see separate instructions). When returning cabinet to upright position, be careful not to bend brackets.

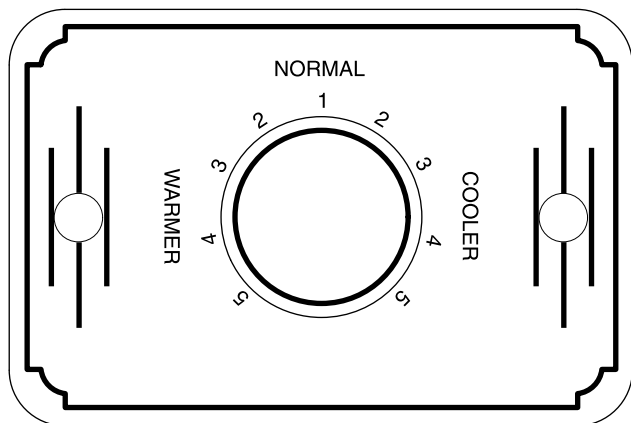


Perlick is committed to continuous improvement. Therefore, we reserve the right to change specifications without prior notice.

Preparing the Cabinet for Use – Standard Back Bar Cabinets

Refrigeration and Temperature Control

The Back Bar Cabinet is equipped with a heavy-duty refrigeration system designed to automatically maintain a storage temperature of 36-41 degrees F. The control is factory set at 38 degrees F.



To Adjust the Temperature:

The temperature control is inside the cabinet on the right-hand side of the evaporator fan panel assembly. You will need a screwdriver to turn the adjusting screw. Make small adjustments until the desired temperature is achieved.

- **Colder Temperatures:** Turn the adjusting screw clockwise (to the right)
- **Warmer Temperatures:** Turn the adjusting screw counterclockwise (to the left.)

The condenser fan motor turns off and on with the condensing unit. The evaporator fan motor runs continuously. The fan motors are lifetime lubricated and will require no oiling.

NOTE: Cabinet temperatures lower than 34° will not allow for proper defrosting of the evaporator coil. If defrosting is necessary, turn the control knob to the OFF position until coil is defrosted.

Cleaning the Cabinet:

- Disconnect all power prior to cleaning.
- Use a mild detergent and water to clean the inside and outside of the cabinet.
- Inspect and clean the fan, evaporator coil and light channel areas as necessary.
- Dry thoroughly.

CAUTION: Never use a scouring pad or abrasive cleaners.

Cleaning the Condenser:

Use a stiff brush to clean the dirt from the front surface of the condenser. Keeping the condenser free from dust and dirt will ensure efficient operation.

CAUTION: Do not bend the fins while brushing the front of the condenser.

Replacement Parts – Standard Back Bar Cabinets

MODEL NOS.	BS2D	BS3D	BS4D
	BR2D	BR3D	BR4D
All Models Serial Numbers Above 500,000			
CABINET HINGE			
Right hinge set (SS or Lam tops only)	63407R	63407R	63407R
Left hinge set (SS or Lam tops only)	63407L	63407L	63407L
Top hinge rail for door cabinet (Unfinished top)	61844B1	64426A1	61844B1
Shelf kit, end compartment	57928	57928	57928
Shelf kit, center compartment	N/A	57929	57929
Left or right shelf	62307-2	62307-2	62307-2
Center shelf	N/A	62308-2	62308-2
Vertical partition	61830-1	61830-1	61830-1
Shelf clip	C15875	C15875	C15875
Pilaster strip	C19271-1	C19271-1	C19271-1
Magnetic gasket for wood doors	62581A1	62581A1	62581A1
Magnetic gasket for metal or glass doors	62085-1	62085-1	62085-1
Self Contained Models Only			
Condensing Units (2 door models)			
Condensing unit 1/4 h.p. 115 volt, 60 hz.	C22647	N/A	N/A
Condensing unit (model UF110HBX)	515301063	N/A	N/A
Compressor (model FF110HBX)	513200314	N/A	N/A
Fan motor assembly	215315009	N/A	N/A
Condenser coil	15352019	N/A	N/A
Terminal board	219101538	N/A	N/A
Overload protector	MRT20AGK5590	N/A	N/A
Relay	21351619	N/A	N/A
Capacitor (282-339 MFD. 155V)	13556529	N/A	N/A
Condensing Units (3 & 4 door models)			
Condensing unit 1/3 h.p. 115 volt	N/A	C22646	C22646
Condensing unit (model UF112HBX)	N/A	515301062	515301062
Compressor (model FF112HBX)	N/A	513200003	513200003
Fan motor assembly	N/A	215315009	215315009
Condenser coil	N/A	15352019	15352019
Terminal board	N/A	219101538	219101538
Overload protector	N/A	MRT22AFZ5590	MRT22AFZ5590
Relay	N/A	21351619	21351619
Capacitor (282-339 MFD. 155V)	N/A	13556532	13556532
Condenser housing back panel	60976-1G	60976-1G	60976-1G
Grille cover, black (unfinished top only)	62542-1	62542-1	62542-1
Grille cover, SS (unfinished top only)	62542-2	62542-2	62542-2
Grille cover, black (lam or SS tops only)	62562A1	62562A1	62562A1
Grille cover, SS (lam or SS tops only)	62562A2	62562A2	62562A2
Bulb clamp	C6634	C6634	C6634
Complete coil assembly	62210A1	62210A2	62210A2
Evaporator fin coil	C17511-1	C17511-2	C17511-2
Temperature control	57816-1	57816-1	57816-1
Wiring harness	61354-1	61354-1	61354-1
Wiring harness extension	N/A	N/A	61355-1
Fan motor	C15239A	C15239A	C15239A
5 1/2" Dia. fan blade	57699	57699	57699
Fan guard assembly	C25395	C25395	C25395
Remote Models Only			
Coil assembly	62495A	62496A	62496A
Wiring harness	61362-1	61362-1	61362-1

*Contact Perlick Milwaukee for complete door replacement. Cabinet serial no. required.



Perlick is committed to continuous improvement. Therefore, we reserve the right to change specifications without prior notice.

Cleaning Stainless Steel – Standard Back Bar Cabinets

Recommended Cleaning Agents

JOB	CLEANING AGENT*	COMMENTS
Routine Cleaning	Soap, ammonia, detergent	Apply with sponge or cloth. Can be used on all finishes.
Fingerprints and smears	Areal 20, Lac-O-Nu, Lumin Wash, O'Cedar Cream Polish	Provides barrier film to minimize fingerprints. Can be used on all finishes.
Stubborn stains and Discolorations	Allchem Concentrated Cleaner, Samae, Twinkle, Zud Restoro, Grade F or FFF Italian Pumice, Whiting or Talc, Liquid Nu Steel, Copper's or Revere Stainless Steel Cleaner, Lumin Cleaner, Sta-Clean, Cameo Copper Cleaner, Allen Polish Highlite, Penny-Brite, Copper Brite	Rub lightly, using dry or damp cloth in the direction of polish lines on the stainless steel.

** Use of propriety names is intended only to indicate a type of cleaner and does not constitute an endorsement.
Omission of any proprietary cleaner does not imply its inadequacy. All products should be used in strict accordance
with instructions on the package.*

NOTE: Do Not Use Steel Wool or Scouring Pads to clean stainless steel.

Wiring Diagram – Standard Back Bar Cabinets

