

OPERATOR

MODEL 1870 SYSTEM

ML-28755 1870M
ML-28758 1870F



WORLD HEADQUARTERS
TROY, OHIO 45374

MODEL 1870 SYSTEM OPERATOR'S MANUAL

SAVE THESE INSTRUCTIONS

GENERAL

The Model 1870 System is a PLU (Price Look-up) scale, capable of storing information on as many as 1630 items (with description) or 4667 items (without description), as well as totals data for each item and grand totals. Each item record consists of a PLU code, a UPC number, item description, item class, tare weight, shelf life, and the price per unit (either weight or by count quantity). The 1870F features fractional pound pricing capabilities. The 1870M features multiple pound pricing capabilities.

The 1870 System printer utilizes a thermal-print method of printing labels and therefore, requires no ink or ribbon. The printer uses thermal-print labels with a preprinted format and can also use standard thermal-print adding machine paper for listing of the entire file or totals

The unit requires a dedicated power supply circuit of 115 volts. When the scale is turned off, memory is maintained by a battery for a minimum of 100 hours. The battery automatically recharges when the scale is turned on.

CONTROLS

SCALE/PRINTER

The main power is controlled by the main power switch located under the printer cover near the right rear side of the Scale System (Fig. 1). This switch can remain ON at all times. However, if it is turned off, it must be turned on as a part of the Power Up Sequence.

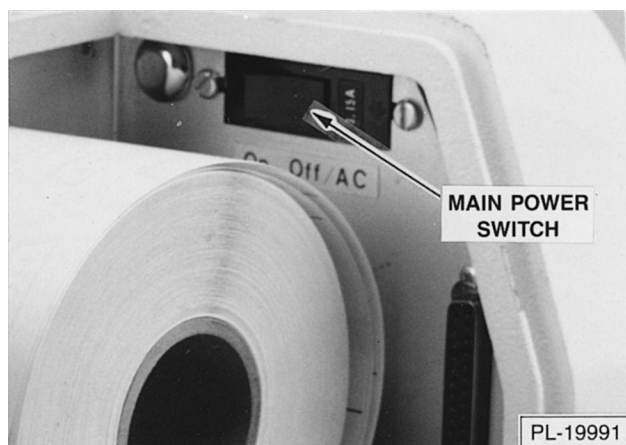


Fig. 1



Fig. 2

The display and scale re-set are controlled by the *On-Off/Rezero* switch (Fig. 2). To rezero the scale, turn the switch *Off* momentarily, then back *On*.

The *Void* button (Fig. 3) is used to prevent data from the previous transaction from being added to the totals files.

The key shown in Fig. 3 is required to gain access to supervisor functions, which are explained in a separate Supervisor Manual.



Fig. 3

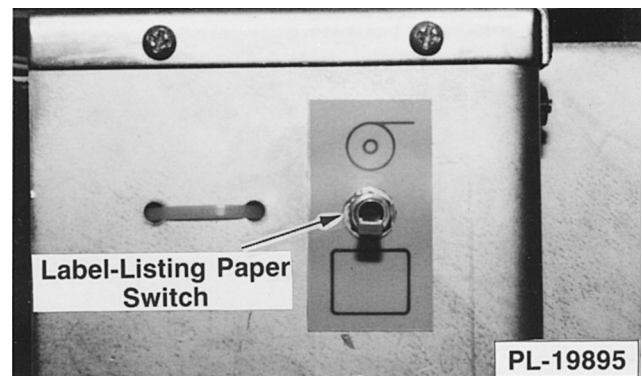


Fig. 4

The Label-Listing Paper switch (Fig. 4) must be pointing toward the label symbol (rectangle) whenever packages are being labeled. In the Supervisor's mode, point the switch to the paper symbol (circle) whenever listing paper is being used. The switch is located just to the rear of the paper roll.

1870 System Keyboard

Operational functions are executed using the keyboard. Active keys will make an audible sound when touched. Each key is listed below, along with its operator mode function(s).

0-9 — these keys enter numerical digits into the display.

lbs. for — This key enters the “pounds for” modifier for multiple-pound pricing (1870M only).

Price — • If no PLU code has been entered, this key calls up PLU code 9991 for a general weight price entry.
• If a PLU code has been entered, this key clears the previous price for entry of a new price.

Tare — • If no PLU code has been entered, this key calls up PLU code 9991 for a general weight price entry.
• If a PLU code has been entered, this key clears the previous tare weight for entry of a new tare weight.

By Count — • If no PLU code has been entered, this key calls up PLU code 9990 for a general “by count” price entry.
• If a “by count” PLU code has been entered, this key clears the previous “by count” quantity for entry of a new quantity.

Enter Hold/Date — • If no PLU code has been entered, this key allows entry of a new date and accepts a newly entered date.
• If a PLU code has been entered this key selects the Prepack Mode.

Clear Code/Date — • When entering a date, this key clears erroneously entered digits.
• If a PLU code has been entered, this key clears the code-related information.

Print/PLU — • When a PLU code has been entered into the display, this key initiates the look-up of that item record.
• This key initiates a print cycle.

OPERATION

The OPERATION section is broken down into four basic parts:

- The POWER UP SEQUENCE must be executed each time the system is turned on (except when rezeroing the scale).
- NORMAL OPERATION explains the normal routine for labeling products.
- OVERRIDE OF PROGRAMMED ITEM INFORMATION explains how to temporarily change data that is part of an existing item record.
- MISCELLANEOUS PRODUCT LABELING explains the procedure for generating labels for products that do not have a PLU number assigned.

POWER UP SEQUENCE

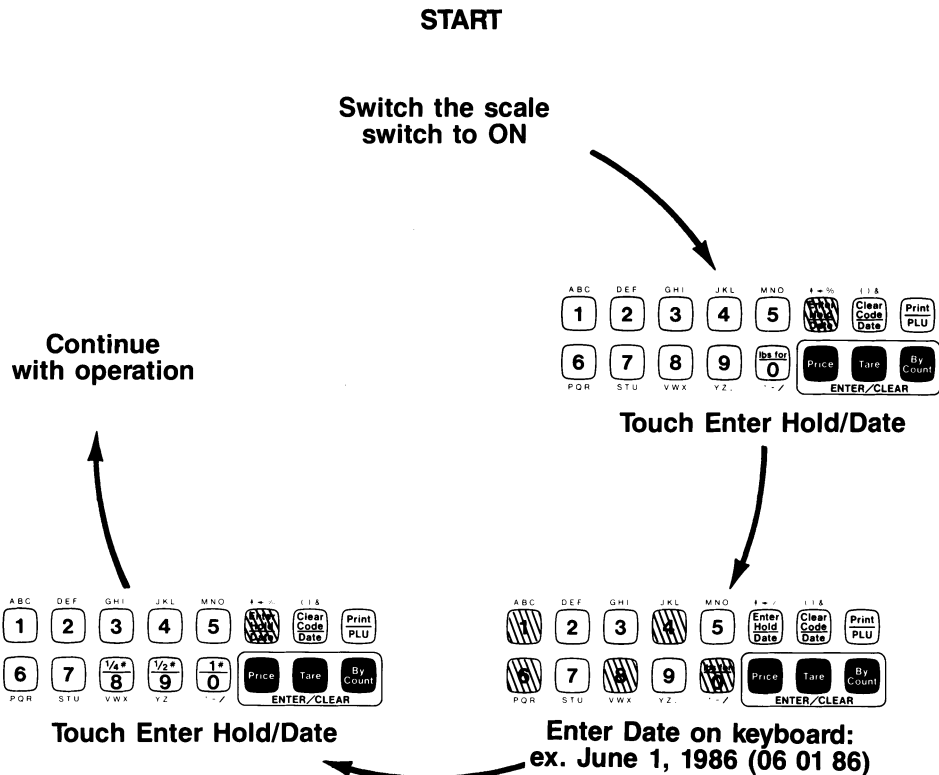
Turn on the Main Power Switch located under the printer cover.

To begin operation, turn the system's *On-Off/Rezero* switch *On*. This then activates the screen display.

The POWER UP SEQUENCE merely consists of entering the date, and is executed as shown in the diagram below.

If you do not want the date to be printed on the labels, skip the Power Up Sequence and continue with operation.

If the prompt DEL ALL FILES is displayed on the scale readout, refer to the TROUBLESHOOTING section on page 11 of this manual.



PL-20205

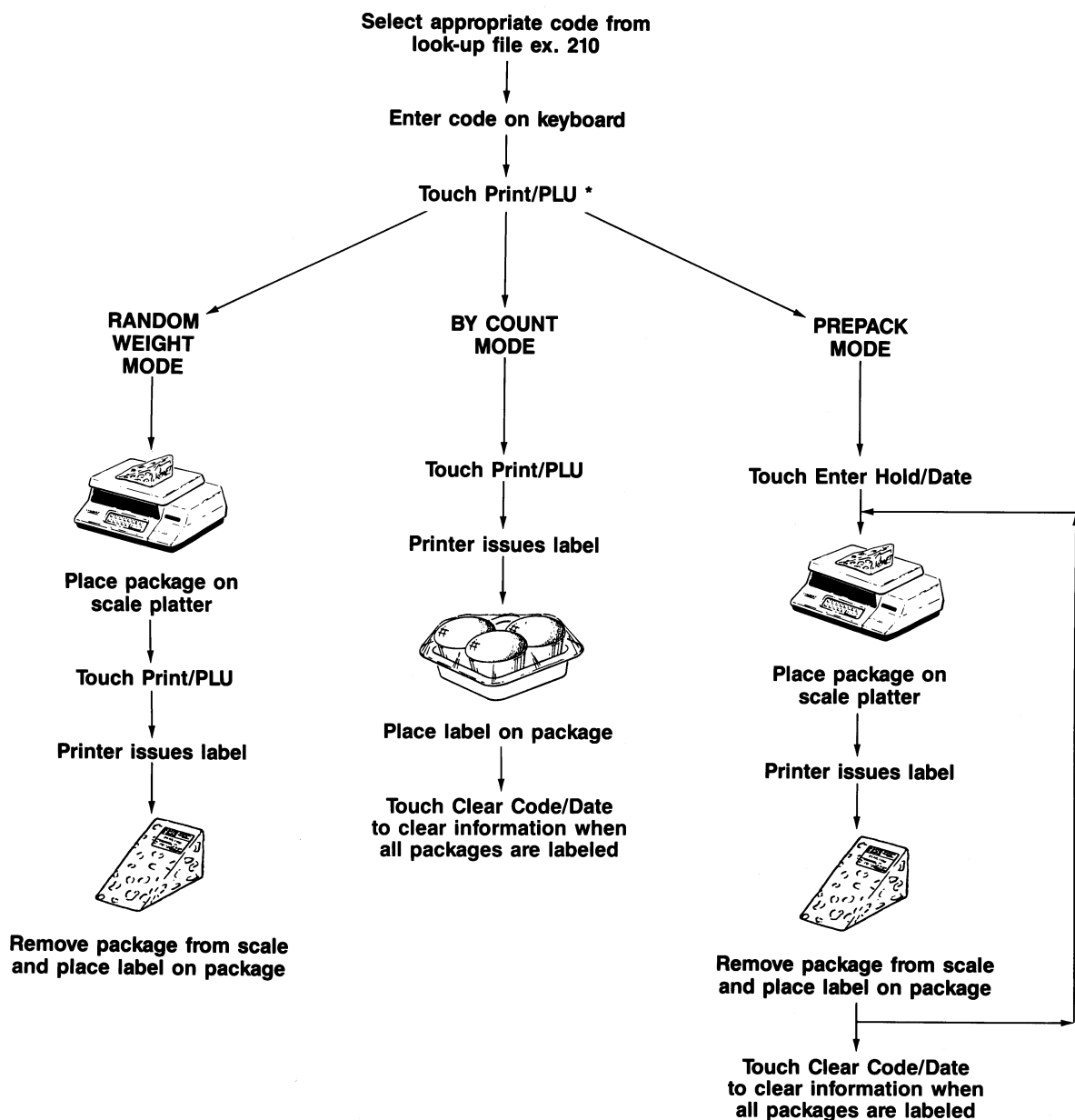
NORMAL OPERATION

Three modes of normal operation are available. The **Random Weight Mode** is utilized when you are labeling different products, the **Prepack Mode** is for use when you are labeling a large quantity of the same product, and the **By Count Mode** is for items that are sold "by count" instead of "by weight".

In the **Random Weight Mode** and the **By Count Mode**, label printing is initiated by touching the *Print/PLU* key. In the **Random Weight Mode** the PLU code and all related information is **cleared** when the package is removed from the scale platter. In the **By Count Mode**, the PLU code and related information are cleared by touching the *Clear Code/Date* key.

In the **Prepack Mode**, label printing is initiated by placing a package on the scale platter. When the package is removed, the PLU code and related information are retained until the *Clear Code/Date* key is touched.

The following diagram illustrates the normal modes of operation.



PL-20200

* This step is not required if using the AUTO-LOOKUP feature.

MISCELLANEOUS PRODUCT LABELING (OPTIONAL: may be programmed by a qualified Hobart service technician.)

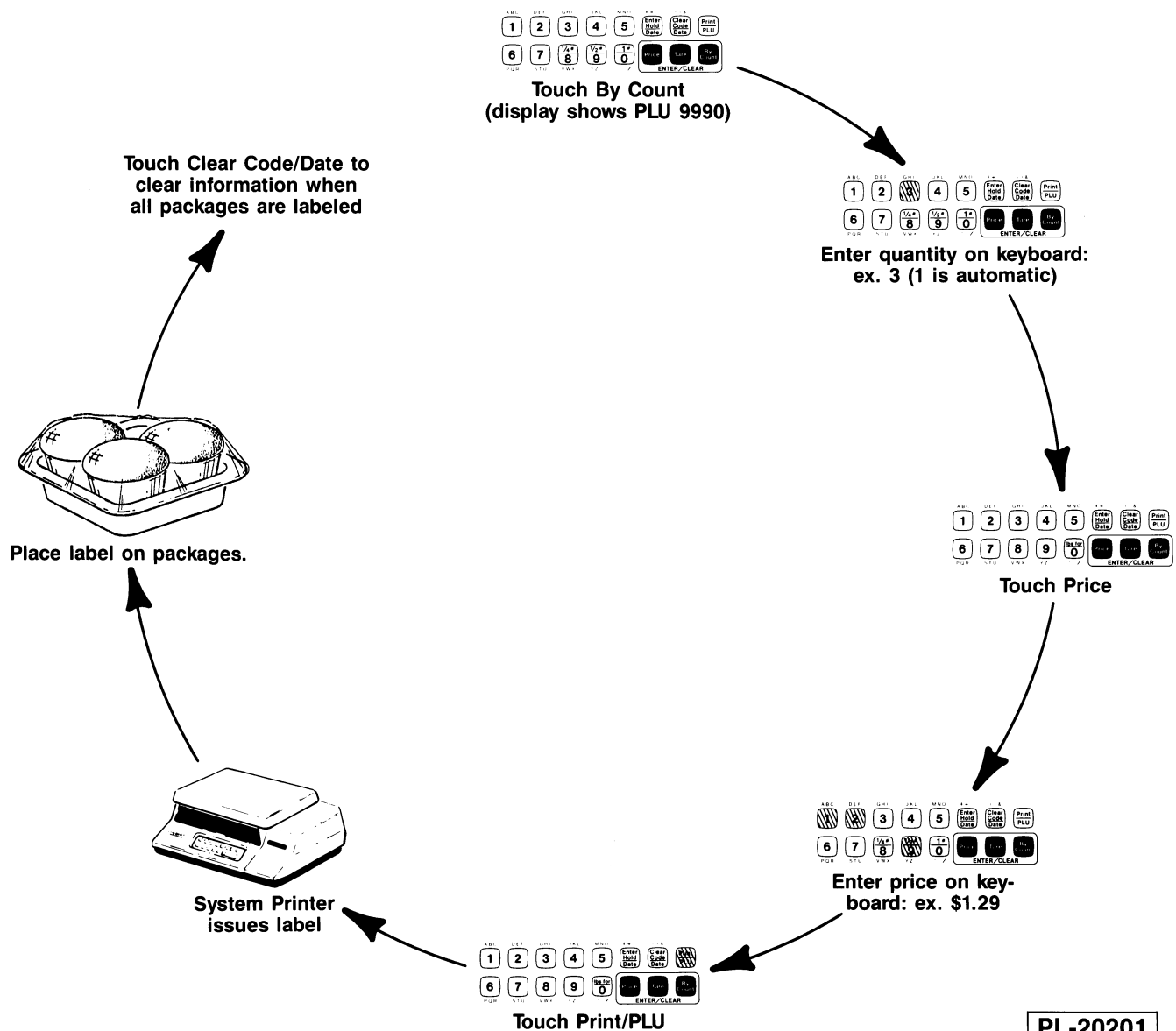
Miscellaneous items that do not have a PLU code assigned can still be labeled with a random weight bar code and general description. There are two PLU codes (9990 & 9991) set aside for such products.

If the item is to be priced by count, touch **By Count** to automatically call up PLU code 9990. You may then enter a quantity and price to be printed on the label. A quantity of 1 is automatically selected by the system and can be changed, if desired, by touching the appropriate number(s) on the keyboard.

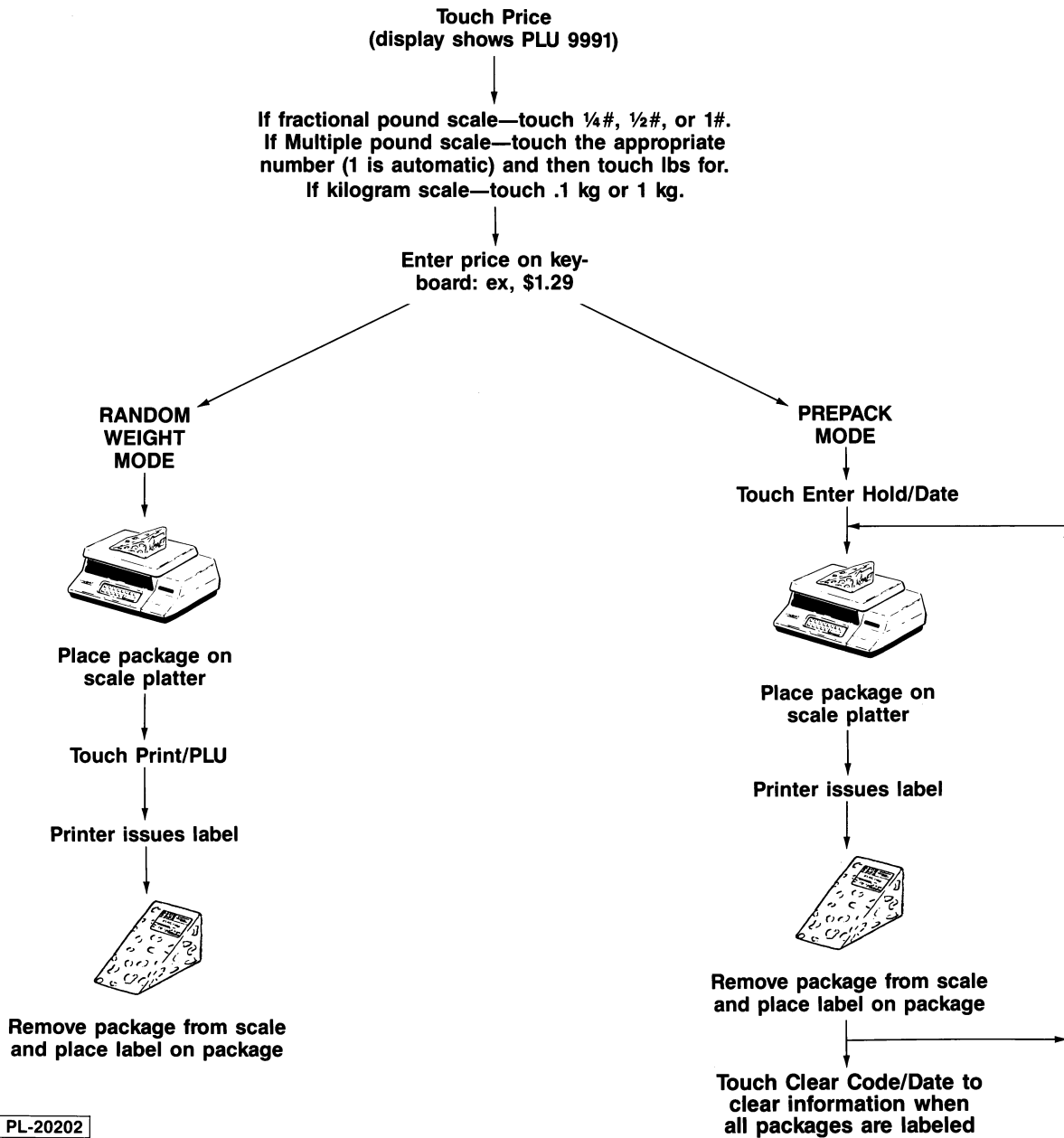
If the item is to be priced by weight, touch **Price** or **Tare** to automatically call up PLU code 9991. You may then enter the price per unit of weight and/or a tare weight.

The following diagrams illustrate how to obtain labels for miscellaneous items.

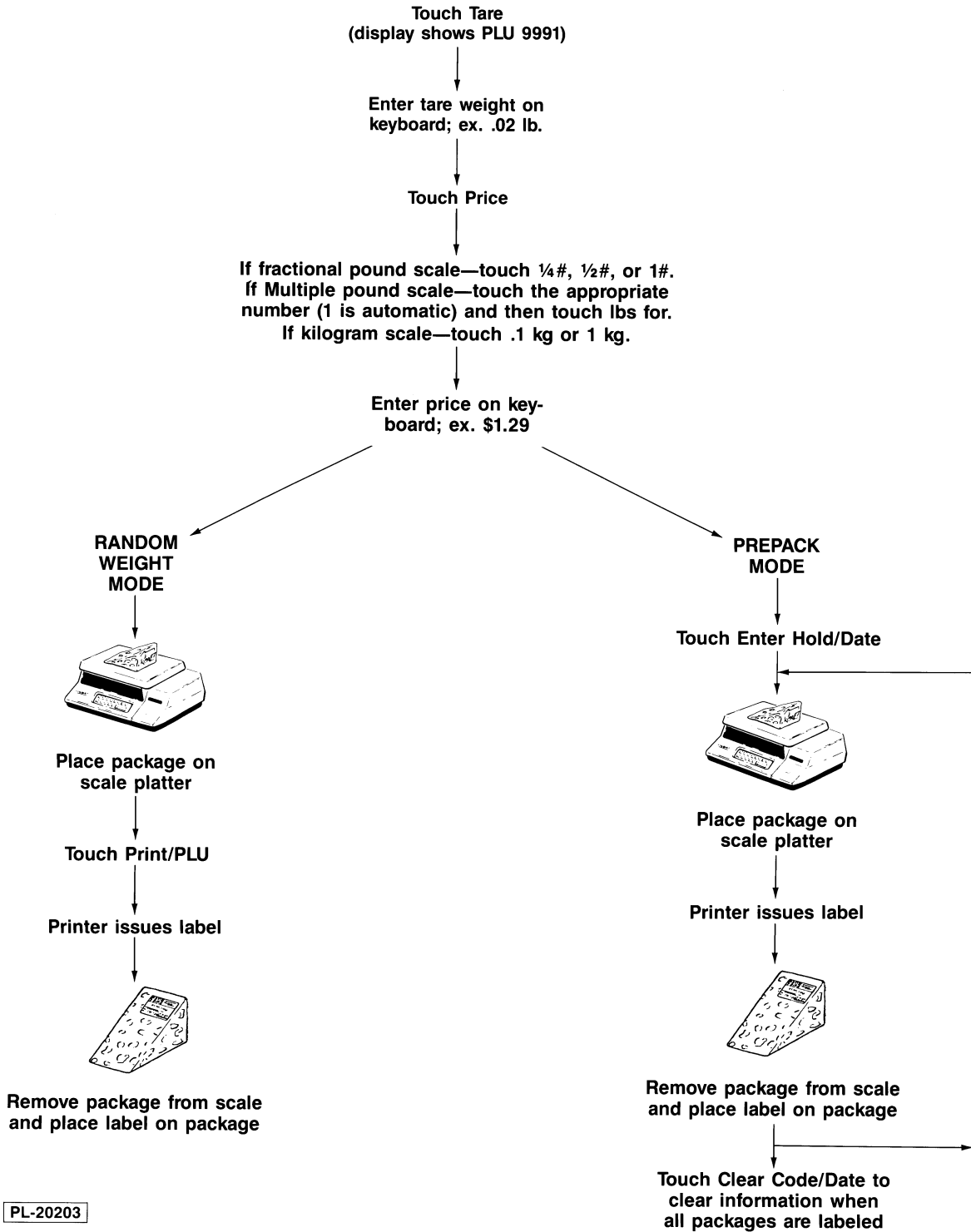
TO USE BY COUNT KEY FOR MISCELLANEOUS BY COUNT ITEMS



TO USE PRICE KEY FOR MISCELLANEOUS WEIGHT ITEMS



TO USE TARE KEY FOR MISCELLANEOUS WEIGHT ITEMS

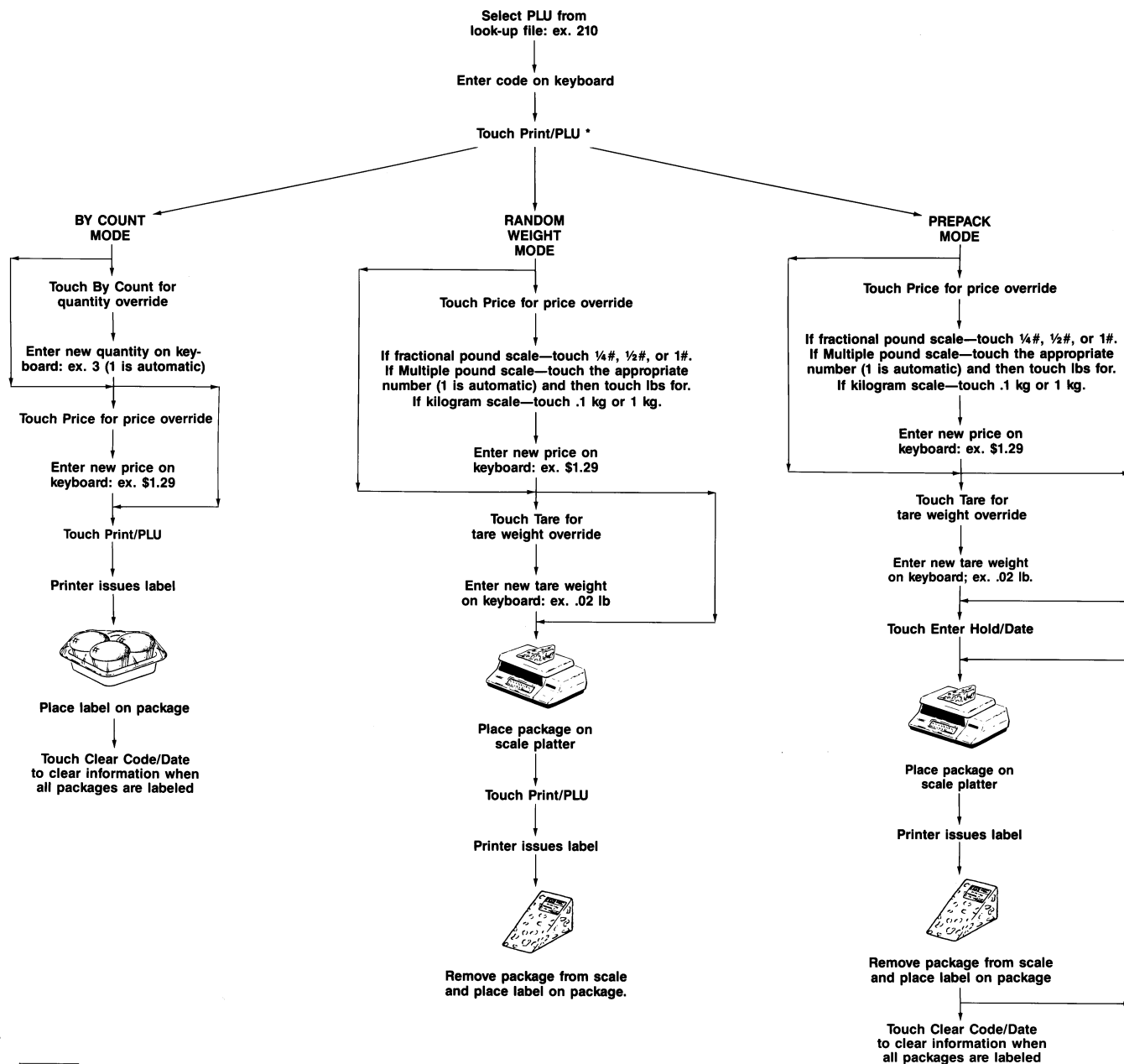


VERRIDE OF PROGRAMMED ITEM FILE INFORMATION (OPTIONAL: may be programmed by a qualified Hobart service technician)

Occasionally, it becomes necessary to temporarily change product data that is stored in the item file; for example, when marking down day-old items, honoring a customer's rain check for a previous sale item, or when using a packaging tray other than the normal one.

Data available for override includes price, tare weight, and by count quantity. This override is temporary and does not affect the item record stored in the file.

This diagram illustrates how to override any or all available data.



PL-20204

* This step is not required if using the AUTO-LOOKUP feature.

VERIFY CORRECTNESS OF WEIGHT AND PRICE

Verification of information on labels should be made routinely. Check the multiplication of price-per-pound times weight and check the indicated weight against printed weight. Weigh the same package several times to verify consistency. Bear in mind that some packages which weigh near the middle of the .01 lb. increment will normally vary up or down by .01 lb. Greater variations than .01 lb. indicate a need for adjustment of the system. In such cases, or whenever necessary, call your authorized Hobart service representative.

MAINTENANCE

CLEANING

It is important to keep the printer cover closed during use. Use appropriate food containers and wrapping material when weighing product.

Use a damp cloth moistened with mild detergent and water solution to wipe the exterior of the scale to remove dust and food soil. DO NOT use harsh detergents or abrasive cleansers.

To remove scale platter for cleaning, grasp tray on left side and lift toward right.

To remove the printer service door for cleaning — lift open the door, press down on the latch spring tab, slide the door forward and lift up. Reverse this procedure to replace the door.

To remove adhesive from rollers, soak a cotton swab in alcohol or F.D. Electronic Cleaner and wipe rollers clean.

CHANGING LABEL ROLL

When the label supply is depleted, OUT OF LABELS will be displayed by the system. To replace the label roll, turn off the main power switch, lift the printer cover and follow the instructions inside.

There are three switches inside the printer housing. Pressing the push button Index switch will cause the next label to be dispensed. The Label/Listing Paper switch must be set on the appropriate setting for either Label Stock or Listing Paper. The Main Power switch turns the electric power to the unit on or off.

TROUBLESHOOTING

ERROR MESSAGES

This section contains explanations of error messages which are displayed when operator attention is required.

DEL ALL FILES—	This indicates that the battery (which supplies power for the scale's memory when turned off) has nearly been exhausted and, as a result, the integrity of the memory is questionable. The memory can either be retained (for supervisor's review) by touching Clear Code/Date , or deleted by touching Enter Hold/Date , at which time the entire file will have to be reloaded.
INVALID CHAR —	The printer has received an invalid print character for a given field (e.g. a letter where a number should be or vice versa). The item record should be examined by the supervisor for accuracy.
NO RECORD —	The PLU code which was entered is not in the file. Check and re-enter number
OUT OF LABELS —	The label stock is depleted. Replace label roll and continue operation.
PRINTER ERROR —	If label stock is not depleted touch Clear Code/Date and try printing again. If message reappears, turn the Main Power switch off and back on and try printing again. If message persists, first contact your Supervisor. Your Supervisor will determine whether your local Hobart Service Office should be called.
PRNTR COMM ERROR —	There has been an error in communication between the scale and printer. Touch Clear Code/Date and try printing again.
SCALE WARMUP —	Scale components are warming up for operation. If dashes appear in the weight display, clear the scale platter or install the platter properly and power up again. The scale should read zero in the weight display within seconds indicating that you are ready to weigh.
WRONG PAPER —	This indicates that the selector switch inside the printer housing is set for the wrong type of Label or Listing Paper being used or that labels are out of position. 1) Open the printer housing cover and check the type of Label/Listing Paper being used and make sure it matches the setting on the selector switch. 2) Check to see that the labels are in the correct position. 3) Depress the push button index switch to determine if the labels will advance properly. If these suggestions do not correct the problem, contact your Supervisor.

- If dashes appear in the TOTAL PRICE display, the price is over capacity.
- If dashes appear in the TARE WEIGHT display, a tare weight will have to be entered before proceeding with operation. If a tare weight has already been entered, dashes indicate that it is over capacity.
- If dashes appear in the WEIGHT display and the prompt SCALE WARMUP is not displayed, the weight on the scale platter exceeds scale capacity.

GLOSSARY

By Count — Pricing of items such as 3 items for \$1.19.

Exception Price — The special pricing of individual items when there is a By Count price. For example say the By Count price is 3 items for \$1.19 and the Exception Price is \$.42. One item will be priced \$.42, two items will be priced \$.84, while three items will be priced \$1.19 instead of \$1.26.

Item File — A series of item records stored in the scale memory.

Item Record — The information about each item that is stored in the scale memory.

lbs for — Pricing of multiple pounds for a single price such as 4 pounds for \$1.28. Any weight would be priced proportionately - for example 1.25 pounds would cost \$.40. This is a feature of Model 1870M, not 1870F.

Loaded — Entered into the memory.

PLU Code — This is the number assigned to each item which is used to call up an item for labeling.

Prompt — A displayed instruction or message from the scale.

Tare — Weight of packaging material (tray, film, soaker pad, etc.) for which the customer does not pay.

UPC (Universal Product Code) — The bar code symbol which can be scanned at the check-out counter.