

Please refer to the Lancer web site (www.lancercorp.com) for information relating to Lancer Installation and Service Manuals, Instruction Sheets, Technical Bulletins, Service Bulletins, etc.

INSTALLATION AND SERVICE MANUAL

FOR

TURBO-CARB HIGH CAPACITY CARBONATOR

Part Number 85-1923, 115 Volts, 50/60 Hz
Part Number 85-1924, 230 Volts, 50/60 Hz
Part Number 85-1926, 115 Volts, 50/60 Hz, with Insulated Tank
Part Number 85-1965, 100 Volts, 50/60 Hz

SPECIFICATIONS

DIMENSIONS

Width	12 1/4 inches (31.11 cm)
Depth	15 1/4 inches (38.74 cm)
Height	11 1/2 inches (29.21 cm)

WEIGHT

Shipping	33.5 pounds (15.2 kg)
Empty	31.1 pounds (14.1 kg)
Operating	45.3 pounds (20.5 kg)

ELECTRICAL

Domestic	Operating Voltage	115
	Hertz	60
	Amps	6.2
Export	Operating Voltage	230
		100 (Japan Only)
	Hertz	50/60
Amps	3.5/3.0	

MOTOR

1/3 Horsepower (HP)

PUMP

125 Gallons Per Hour (GPH)
[473 Liters Per Hour (LPH)]

WATER INLET

3/8 inch S.A.E. Male Flare

CO₂ INLET

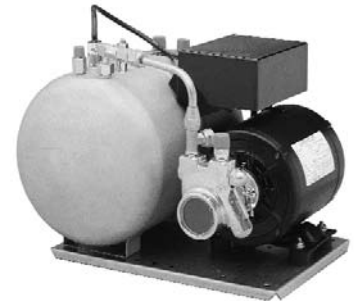
1/4 inch S.A.E. Male Flare

CARBONATED WATER OUTLET (TWO)

3/8 inch S.A.E. Male Flare

TANK OPERATING CAPACITY

215 Ounces (6.4 L)



This Manual supersedes Installation and Service Manual 28-0022/04, dated 11/22/99, and is being published only on the Lancer Web Site.

LANCER

6655 LANCER BLVD. • SAN ANTONIO, TEXAS 78219 USA • (210) 310-7000

FAX SALES

• NORTH AMERICA – 210-310-7245 • INTERNATIONAL SALES – 210-310-7242 • CUSTOMER SERVICE – 210-310-7242 •
• LATIN AMERICA – 210-524-9567 / 210-310-7245 • EUROPE – 32-2-755-2399 • PACIFIC – 61-8-8268-1978 •

FAX ENGINEERING: • 210-310-7096

"Lancer" is the registered trademark of Lancer • Copyright — 2001 by Lancer, all rights reserved.

DATE: 09/26/01
P.N.: 28-0022/05

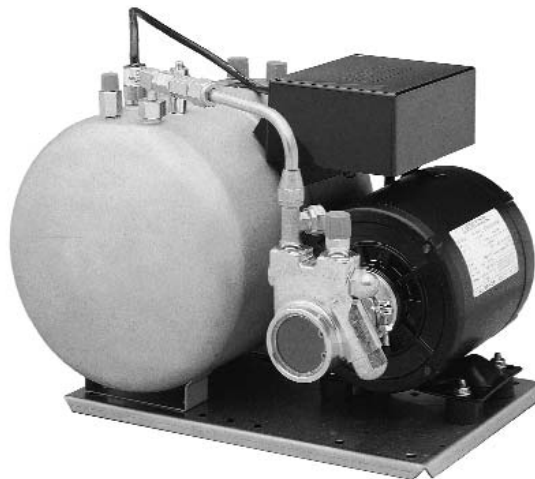
TABLE OF CONTENTS

SPECIFICATIONS

TABLE OF CONTENTS	i
THEORY OF OPERATION	i
1. INSTALLATION	1
1.1 RECEIVING.....	1
1.2 SELECTING LOCATION.....	1
1.3 CONNECT WATER LINE TO PUMP.....	1
1.4 CONNECT CO ₂ LINE TO TANK	1
1.5 CONNECT CARBONATED WATER TO DISPENSING SYSTEM	1
1.6 ELECTRIC POWER SUPPLY	1
2. START UP	2
2.1 START UP PROCEDURE.....	2
3. CLEANING AND REPLACEMENT	2
3.1 INLET WATER CHECK VALVE.....	2
3.2 CO ₂ CHECK VALVE.....	2
3.3 PUMP STRAINER SCREEN.....	3
3.4 REPLACING PROBE	3
3.5 REPLACING P.C. BOARD	3
4. TROUBLESHOOTING	4
4.1 MOTOR FAILS TO START (MOTOR HUMS)	4
4.2 MOTOR FAILS TO START (MOTOR DOES NOT HUM).....	4
4.3 MOTOR RUNS CONTINUOUSLY	4
4.4 WATER IS RELEASED FROM PRESSURE RELIEF VALVE.....	4
4.5 LOW CARBONATION	4
4.6 FOAMY PRODUCT	4
5. BASIC GO/NO GO CARBONATOR CONTROL TEST	5
6. ILLUSTRATIONS, PARTS LISTINGS, AND WIRING DIAGRAMS	6
6.1 LARGE CARBONATOR TANK.....	6-7
6.2 CO ₂ CHECK VALVE ASSEMBLY.....	7
6.3 CHECK VALVE ASSEMBLY.....	7
6.4 PUMP ASSEMBLY	8
6.5 WIRING DIAGRAM (PN 06-0266/02)	8

THEORY OF OPERATION

A carbonator is a device designed to dissolve carbon dioxide gas (CO₂) in water, producing carbonated water. CO₂ gas is delivered through a regulator to the carbonator tank. Simultaneously, plain water is pumped into the tank. The CO₂ gas, under pressure, dissolves in the water and the result is carbonated water. When the level of carbonated water reaches a pre-determined point, the liquid level sensing device (inside the tank) signals the liquid level control module which, in turn, shuts off the pump motor. As carbonated water is drawn from the tank, the level of carbonated water will drop. At a certain point, the liquid level sensing device recognizes that drop in the level and turns on the pump motor which replenishes the amount of carbonated water that has been taken out of the tank.



1. INSTALLATION

1.1 RECEIVING

- A. Each unit is completely tested under operating conditions and thoroughly inspected before shipment. At time of shipment, the carrier accepts the unit and any claim for damage(s) must be made with the carrier. Upon receiving units from the delivering carrier, carefully inspect carton for visible indication(s) of damage. If damage exists, have carrier note same on bill of lading and file a claim with the carrier.
- B. Open the top of the carton. Remove interior packing. Carefully lift the Carbonator out of carton.
- C. Inspect for concealed damage(s) and if detected, notify delivering carrier and file claim.

1.2 SELECTING LOCATION

- A. Select a level, well ventilated, accessible location convenient to water and electric supply.

1.3 CONNECT WATER LINE TO PUMP

- A. Connect Flexible Pressure Tubing, 3/8 inch ID or larger, from water supply to Pump Inlet using a 3/8 inch SAE Female Swivel Nut and Flare Seal Washer.
- B. A Shutoff Valve should be installed in water line to Carbonator.
- C. Water supply must provide a minimum flow rate of 125 GPH (473 LPH), and have a minimum pressure of 25 PSIG (1.83 kg/cm²) and a maximum of 80 PSIG (5.62 kg/cm²). If water pressure exceeds 80 PSIG (5.62 kg/cm²), install a Regulator and adjust to 50 PSIG (3.51 kg/cm²).
- D. Off tastes and/or excessive silt, sand, or iron require that a water filter be installed in the water line supplying the Carbonator. The water filter should be checked periodically, as required by local conditions.

NOTE

Do not connect to a heated (hot) water source or a water source supplying soft water. This will cause excessive foaming.

1.4 CONNECT CO₂ LINE TO TANK

- A. Connect Flexible Pressure Tubing, 1/4 inch ID or larger from CO₂ Regulator to the Tank Inlet using a 1/4 inch SAE Female Swivel Nut and Flare Seal Washer.
- B. CO₂ supply must have a Regulator and Gauge adjustable from 0 to 150 PSIG (3.5 kg/cm²) minimum.

1.5 CONNECT CARBONATED WATER TO DISPENSING SYSTEM

- A. Connect Flexible Pressure Tubing, 3/8 inch ID or larger, from Dispensing System to Outlet on Tank, using a 3/8 inch SAE Female Swivel Nut and Flare Seal Washer.
- B. If only one Carbonated Water Outlet on the Tank is used, the other Outlet must be capped with a Stainless Steel Cap Nut and Flare Seal Washer.

1.6 ELECTRIC POWER SUPPLY

WARNING

THIS UNIT MUST BE PROPERLY ELECTRICALLY GROUNDED TO AVOID POSSIBLE FATAL ELECTRICAL SHOCK OR SERIOUS INJURY TO THE OPERATOR. THE POWER CORD IS PROVIDED WITH A THREE PRONG GROUNDED PLUG. IF A THREE HOLE GROUNDED ELECTRICAL OUTLET IS NOT AVAILABLE, USE AN APPROVED METHOD TO GROUND THE UNIT.

- A. The electric power supply must be a three prong, ground convenience outlet having the same configuration as the power cord.
- B. Outlet must have proper voltage, cycles and ampere ratings. See Carbonator Name Plate for ratings.

NOTE

Do not plug into electrical outlet unless ratings on name plate agree with local current available.

2. START UP

2.1 START UP PROCEDURE

- A. Turn water supply ON, and start filling Tank.
- B. Pull UP on Pressure Relief Valve Ring to allow air to escape.
- C. Hold Pressure Relief Valve OPEN, until Tank is full and water spurts out of Valve.
- D. Check for water leaks.

WARNING

THIS UNIT MUST BE PROPERLY ELECTRICALLY GROUNDED TO AVOID POSSIBLE FATAL ELECTRICAL SHOCK OR SERIOUS INJURY TO THE OPERATOR. THE POWER CORD IS PROVIDED WITH A THREE PRONG GROUNDED PLUG. IF A THREE HOLE GROUNDED ELECTRICAL OUTLET IS NOT AVAILABLE, USE AN APPROVED METHOD TO GROUND THE UNIT.

- E. Plug in power supply.
- F. Turn on CO₂ supply and set Regulator at 100 PSIG (7.03 kg/cm²).
- G. Check for CO₂ leaks (see Section 3.1).
- H. Open a Dispensing Valve. Allow water to flow until Pump Motor turns on.
- I. Close Dispensing Valve and allow Pump Motor to cycle off.
- J. Repeat steps H and I several times, until carbonated water flows freely from Valve.
- K. Check for leaks.
- L. Check CO₂ Regulator to ensure that CO₂ pressure has not changed.

3. CLEANING AND REPLACEMENT

3.1 INLET WATER CHECK VALVE

CAUTION

A LEAKING INLET WATER CHECK VALVE WILL ALLOW CARBONATED WATER TO FLOW BACK THROUGH THE PUMP (WHEN IT IS SHUT OFF), AND CONTAMINATE THE WATER SUPPLY.

- A. UNPLUG Power Cord.
- B. Shut water supply OFF to Pump.
- C. Set CO₂ pressure at 100 to 125 PSIG (7.0 to 8.8 kg/cm²).
- D. Disconnect Stainless Steel Water Line from Water Inlet Check Valve. *Do not loosen Check Valve Assembly.*

CAUTION

DO NOT PROBE CHECK VALVE WITH ANY OBJECT.

- E. Cover end of Check Valve with soap suds. If Check Valve is defective, gas bubbles will appear. If a leak is detected, continue with the following steps. If no leak is detected, proceed to Step J below.
- F. Turn CO₂ pressure OFF. Release pressure in Tank, using Relief Valve.
- G. Disassemble Check Valve Body and components. Inspect Spring and O-Rings. Replace as required.
- H. Reassemble and reinstall Check Valve.
- I. Reconnect Stainless Steel Line to water inlet Check Valve.
- J. Follow start up procedure (see Section 2.1) to put Carbonator back into operation.

3.2 CO₂ CHECK VALVE

- A. UNPLUG Power Cord.
- B. Shut water supply OFF to Pump.
- C. Turn CO₂ supply OFF and set CO₂ pressure regulator at 0 PSIG.
- D. Disconnect CO₂ supply line from CO₂ Check Valve.

CAUTION

DO NOT PROBE CHECK VALVE WITH ANY OBJECT.

- E. Cover end of Check Valve with soap suds. If Check Valve is defective, gas bubbles will appear. If a leak is detected, continue with the following steps.

- F. Release pressure in Tank, using Relief Valve.
- G. Disassemble Check Valve Body and components. Inspect Spring and O-Rings. Replace as required.
- H. Reassemble and reinstall Check Valve.
- I. Reconnect CO₂ supply line to CO₂ Check Valve.
- J. Follow start up procedure (see Section 2.1) to put Carbonator back into operation.

3.3 PUMP STRAINER SCREEN

- A. UNPLUG Power Cord.
- B. Shut water supply OFF to Pump.
- C. Unscrew Brass Plug on Pump, and remove Strainer from Pump.
- D. Inspect and clean, or replace, Strainer Screen.
- E. Reinstall Strainer, and tighten Brass Plug.
- F. Turn water supply ON.
- G. Check for leaks. If a leak is detected, carefully tighten Brass Plug.

WARNING

THIS UNIT MUST BE PROPERLY ELECTRICALLY GROUNDED TO AVOID POSSIBLE FATAL ELECTRICAL SHOCK OR SERIOUS INJURY TO THE OPERATOR. THE POWER CORD IS PROVIDED WITH A THREE PRONG GROUNDED PLUG. IF A THREE HOLE GROUNDED ELECTRICAL OUTLET IS NOT AVAILABLE, USE AN APPROVED METHOD TO GROUND THE UNIT.

- H. Plug Power Cord into electrical outlet.

3.4 REPLACING PROBE

- A. UNPLUG Power Cord.
- B. Shut water and CO₂ gas supplies OFF.
- C. Remove Cover from PC Board enclosure.
- D. Unplug Probe Leads from PC Board.
- E. Pull ring on Pressure Relief Valve to relieve CO₂ pressure on Tank.
- F. Unscrew Probe from top of Tank.
- G. Screw new Probe into top of Tank. *Be sure to install White Plastic Washer as a water tight seal seal will not be obtained without the washer.*
- H. Connect Probe Leads to PC Board as follows:

Green	G
Black	LO
White	HI

- I. Slide Probe Strain Relief into slot, replace cover and secure cover with screws.
- J. Follow start-up procedure (see Section 2.1) for putting Carbonator back into operation.

3.5 REPLACING PC BOARD

- A. UNPLUG Power Cord.
- B. Carefully remove Cover from PC Board enclosure.
- C. Unplug Probe Leads, Power Cord Leads, and Motor Cord Leads from PC Board.
- D. Unscrew and remove PC Board Assembly.
- E. Install new PC Board and secure with screws.
- F. Connect push on Leads to PC Board as follows.

1. <u>Probe</u>	2. <u>Power Cord</u>	3. <u>Motor Cord</u>
Green G	Black 1	Black 3
Black LO	White 2	White 4
White HI		

- G. Install cover. Secure cover with two (2) screws.
- H. Plug Power Cord IN.

4. TROUBLESHOOTING

<u>TROUBLE</u>	<u>CAUSE</u>	<u>REMEDY</u>
4.1 Motor fails to start (Motor hums).	A. Pump binding. B. Open Winding infield.	A. Loosen Pump Clamp and rotate Pump slightly to free binding, If this fails, replace Pump. B. Replace Motor.
4.2 Motor fails to start (Motor does not hum).	A. Cutout due to overloading by Pump binding. B. Blown Fuse, or Circuit Breaker tripped. C. Defective Motor. D. Defective PC Board. E. Defective Probe.	A. Let Motor cool and follow Pump binding remedy. B. Replace Fuse or reset Circuit Breaker. C. Replace Motor. D. Replace PC Board. E. Replace Probe.
4.3 Motor runs continuously.	A. Water supply shut off. B. Water supply pressure less than 25 PSIG (1.86 kg/cm ²). C. Restriction in Water Supply Line. D. Restriction in Inlet Water Check Valve. E. Restriction in Pump. F. Defective PC Board. G. Defective Probe.	A. Reestablish water supply. B. Connect Pressure Gage to Pump Tee and increase Pump By-Pass pressure to 200 PSIG (14.1 kg/cm ²). C. Locate restriction and establish proper flow. D. Disassemble Inlet Water Check Valve and clean. E. Remove and clean Pump Strainer. If Pump is still restricted, replace Pump. F. Replace PC Board. G. Replace Probe.
4.4 Pressure Relief Valve releases water.	A. Defective seal in Pressure Relief Valve. B. Defective Spring in Pressure Relief Valve.	A. Replace Pressure Relief Valve. B. Replace Pressure Relief Valve.
4.5 Low Carbonation.	A. Low CO ₂ pressure. B. Leaking CO ₂ Supply Line.	A. Increase CO ₂ pressure or replace CO ₂ tank. B. Locate leak and repair.
4.6 Foamy Product.	A. Over carbonation. B. Dirty Product Valve. C. Product temperature too high.	A. Reduce CO ₂ pressure. B. Disassemble and clean Product Valve. C. Product temperature must be below 42°F (5.5°C). Check cooling system.

5. BASIC GO/NO GO CARBONATOR CONTROL TEST

This is a test to determine if the liquid level control is operating properly. The test will simulate the rising and falling of the water level in the tank. The test assumes the motor is known to be good.

1. Unplug Unit from AC power line.
2. Remove cover from control box.

WARNING

115 OR 220 VAC IS PRESENT ON TERMINALS 1, 2, 3, AND 4.

3. Remove the 3 wire probe cable connectors from the **G**, **LO** and **HI** terminals on the control board.
4. Plug the Unit into the AC power line. If the motor fails to run, the control board is bad. If motor does run, go to step 5.

NOTE

The carbonator motor should start running when plugged in with no probe wires attached to the control board.

5. Connect clips to the **G** and to **LO** terminals. The motor should continue to run. If the motor does not continue to run, the board is bad. If motor runs, go to step 6.
6. Connect the remaining clip to the **HI** terminal. The motor should stop. If the motor does not stop, the board is bad. If motor stops, go to step 7.

NOTE

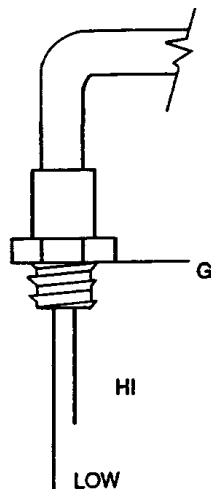
The carbonator motor should stop running as soon as the **HI** terminal is touched.

7. Remove clip from **HI** terminal and the motor should stay OFF. If the motor starts, the board is bad. If motor does not run, go to step 8.
8. Remove clip from **LO** terminal and the motor should start running. If the motor does not run, the board is bad. If motor runs, go to step 9.

WARNING

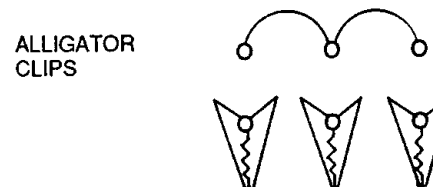
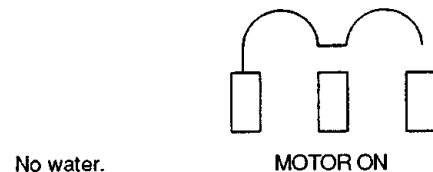
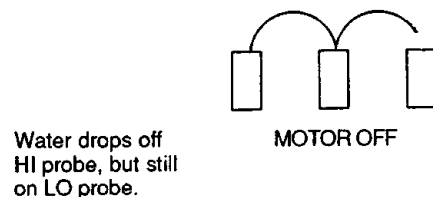
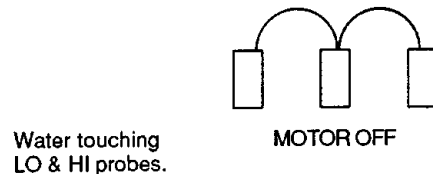
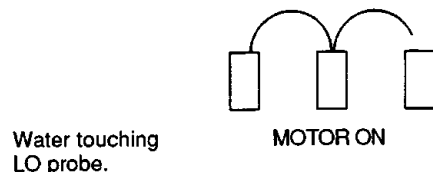
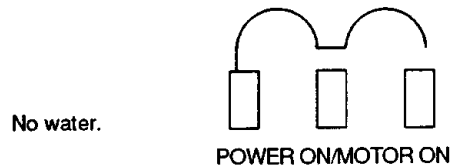
UNPLUG UNIT.

9. To reconnect the 3 probe cable connectors, remember white wire to HI, black to LO, green to G.



WATER LEVEL SIMULATION

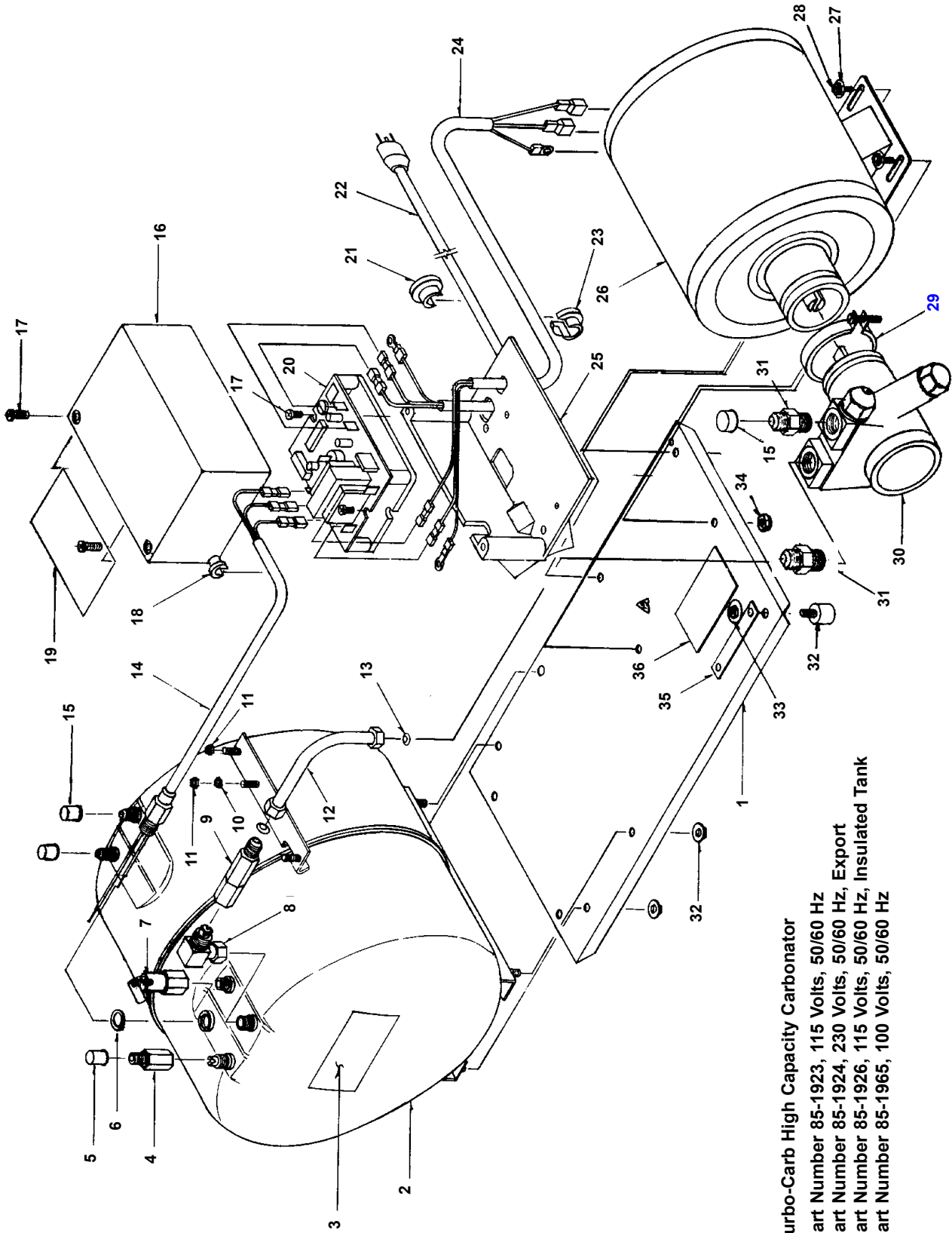
G LO HI



NOTE: THIS SAME TEST SEQUENCE MAY BE USED WITH THE PROBE CONNECTED TO THE ELECTRONIC CONTROL AND USE THE ALLIGATOR JUMPER CONNECTED TO THE APPROPRIATE PROBE WIRE.

6. ILLUSTRATIONS, PARTS LISTINGS, AND WIRING DIAGRAMS

6.1 LARGE CARBONATOR TANK

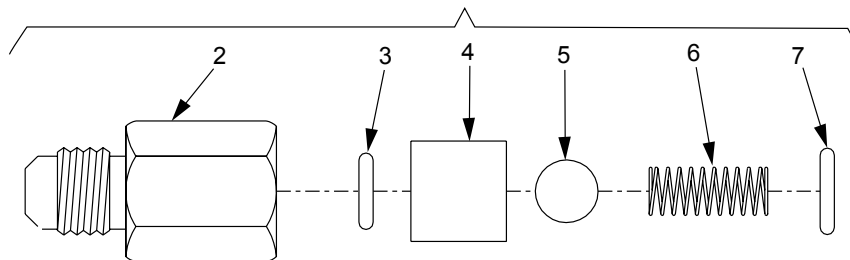


Turbo-Carb High Capacity Carbonator
Part Number 85-1923, 115 Volts, 50/60 Hz
Part Number 85-1924, 230 Volts, 50/60 Hz, Export
Part Number 85-1926, 115 Volts, 50/60 Hz
Part Number 85-1965, 100 Volts, 50/60 Hz

6.1 LARGE CARBONATOR TANK (CONTINUED)

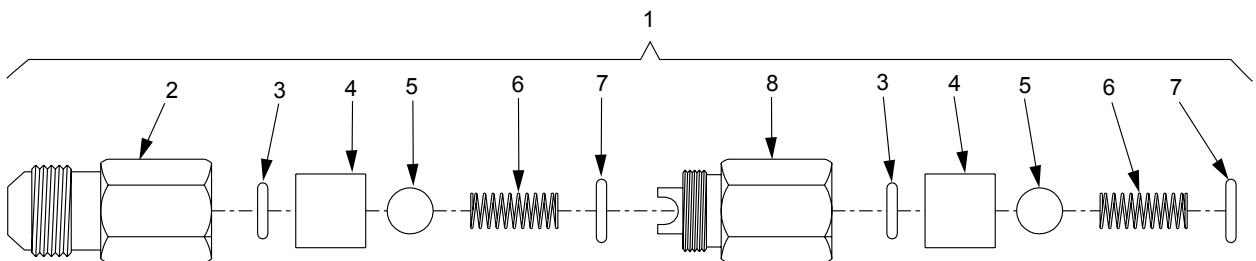
ITEM	PART NO.	DESCRIPTION	ITEM	PART NO.	DESCRIPTION
1	07-0199/01	Base Plate	20	52-1017	PC Board, 115 Volt
2	23-0369	Tank Assy	-	52-1018	PC Board, 230 Volt
-	42-0015	Tank Assy, Insulated	21	13-0028	Strain Relief
3	06-0039	Label, Warning	22	52-0588	Power Cord Assy
4	17-0342	CO2 Check Valve Assy	23	13-0008	Strain Relief
5	04-0044	Protector Cap	24	52-0585	Motor Cord Assy
6	02-0096	Washer	25	05-0529	Enclosure Control
7	54-0066	Relief Valve Assy	26	91-0008	Motor, 115V/50-60Hz
8	17-0083	Fitting Assy	-	91-0011	Motor, 230V/50-60Hz
9	17-0341	Check Valve Assy	-	91-0132	Motor, 100V/50-60Hz (Japan)
10	04-0049	Nut	27	04-0033	Washer
11	04-0297	Keps Nut	28	04-0520	Hex Bolt, 1/4 - 20 x 1/2 Inch
12	48-1449	Tube Assy, Insulated	29	07-0017	Clamp
-	48-1469	Tube Assy, Non-Insulated	30	86-0085	Pump
13	05-0017	Flare Seal	31	01-0111	Adapter
14	52-0590/01	Probe	32	04-0247	Isolator Foot
15	04-0045	Protector Cap	33	04-0032	Nut, 1/4 - 20, Nylock
16	05-0528	Cover, Control	34	04-0034	Lock Nut
17	04-0470	Screw	35	11-0004	Connector
18	13-0026	Strain Relief	36	06-0003/02	Name Plate
19	06-0266/02	Label, Wiring Diagram			

6.2 CO2 CHECK VALVE ASSEMBLY



ITEM	PART NO.	DESCRIPTION	ITEM	PART NO.	DESCRIPTION
1	17-0342	CO2 Check Valve Assy	5	01-0674	Ball
2	01-0669	Body	6	03-0021	Spring
3	02-0025	O-Ring	7	02-0003	O-Ring
4	01-0689	Sleeve			

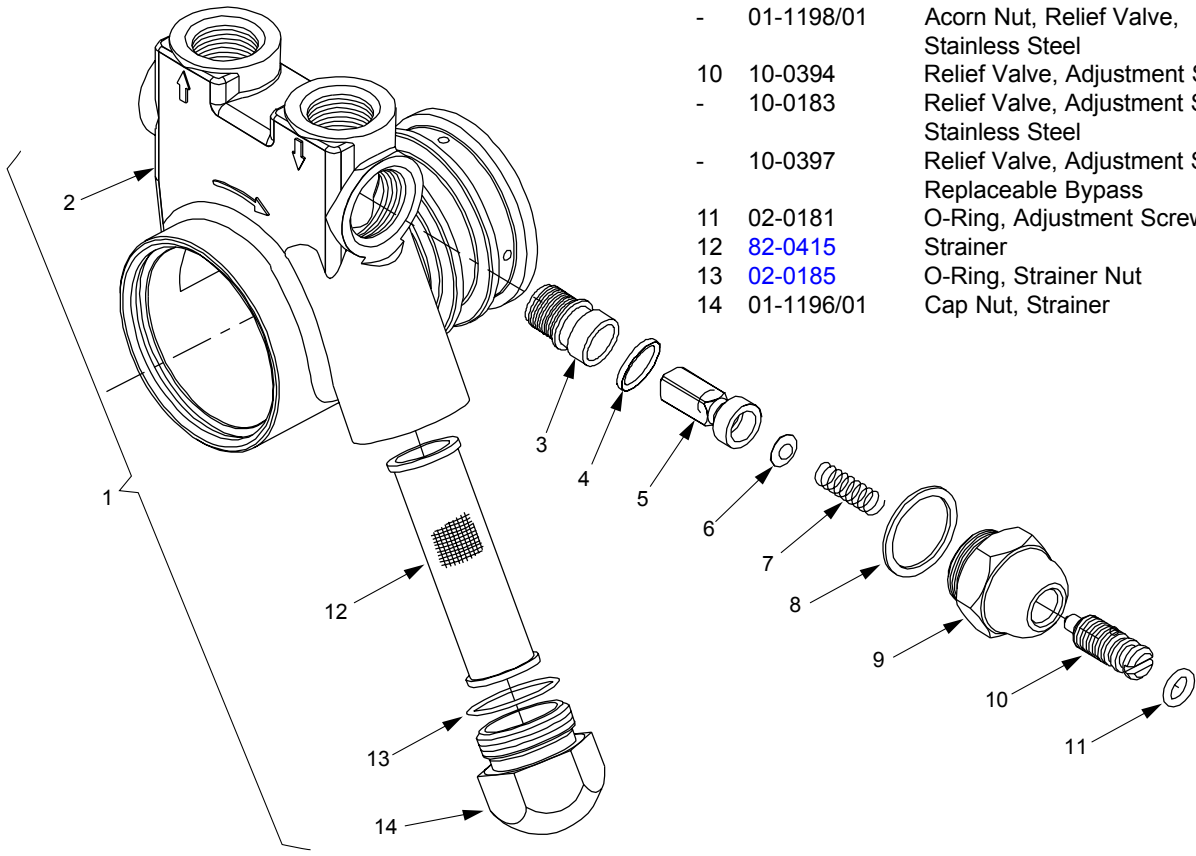
6.3 CHECK VALVE ASSEMBLY



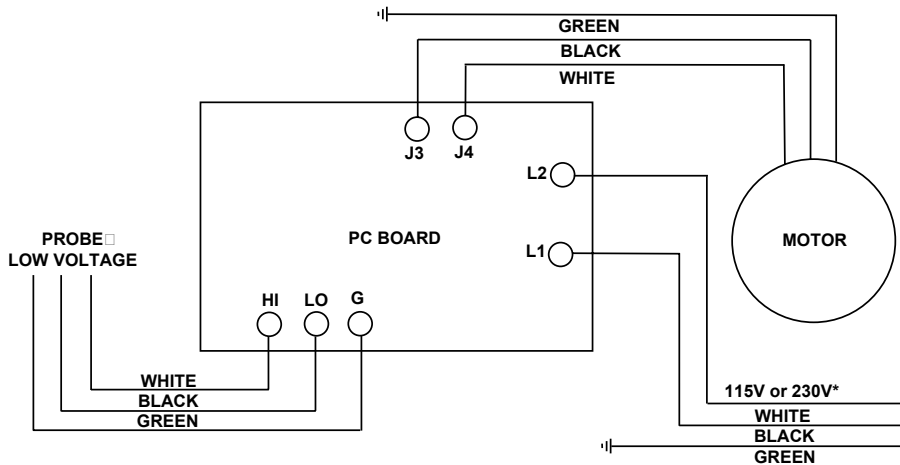
ITEM	PART NO.	DESCRIPTION	ITEM	PART NO.	DESCRIPTION
1	17-0341	Check Valve Assy	5	01-0674	Ball
2	01-0673	Body	6	03-0021	Spring
3	02-0025	O-Ring	7	02-0003	O-Ring
4	01-0689	Sleeve	8	01-0670	Body

6.4 PUMP ASSEMBLY

ITEM	PART NO.	DESCRIPTION	ITEM	PART NO.	DESCRIPTION
1	86-0085	Pump Assy	5	17-0438	Bypass Valve Assy
2	10-0175	Housing	-	17-0439	Bypass Valve Assy, Stainless Steel
-	10-0176	Housing, Stainless Steel	-	10-0396	Bypass Valve Assy, Replaceable Bypass
-	10-0395	Housing, Replaceable Bypass	6	81-0103	Bypass Valve Filter
3	54-0152	Bypass Seat Sub Assy	7	03-0132	Spring Relief Valve
4	02-0115	O-Ring	8	02-0192	Gasket, Acorn Nut
			9	01-1771	Acorn Nut, Relief Valve
			-	01-1198/01	Acorn Nut, Relief Valve, Stainless Steel
			10	10-0394	Relief Valve, Adjustment Screw
			-	10-0183	Relief Valve, Adjustment Screw, Stainless Steel
			-	10-0397	Relief Valve, Adjustment Screw, Replaceable Bypass
			11	02-0181	O-Ring, Adjustment Screw
			12	82-0415	Strainer
			13	02-0185	O-Ring, Strainer Nut
			14	01-1196/01	Cap Nut, Strainer



6.5 WIRING DIAGRAM (PN 06-0266/02)



*100V FOR PN 85-1965

*(Continued from previous page)***EcuALancer S.A. - Ecuador**

Lancer Sales Company
 Contact: Luciano Lopez
 Sector Las Acacias
 Luis De Beethoven #958
 Y Capitan Rafael Ramos
 Quito, Ecuador
 Phone: 593-22-401-598, 400-937, 406-418
 FAX: 593-22-400-535
 e-mail: Llopez@ecnet.ec

Lancer Authorized Distributors**Eximport & Barter Co. - Caribbean**

2101 S.W. 56th Terrace
 Hollywood, FL 33023 USA
 Phone: (954) 967-9999
 FAX: (954) 967-9900
 e-mail: edbrandao@aol.com

PromoVen, S.A. - Argentina

Contact: Rafael Mendoza
 Juncal 858 - Piso 3 Depto. "L"
 (1062) Buenos Aires
 Argentina
 Phone: (54.11)4394.7654
 FAX: (54.11)4394.1193
 e-mail: promoven@customw.com.ar

Bras Sulamericana LTDA. - Brasil

Contact: Fabio Queiroz
 Rua. Dr. Ladislau Retti, 1400
 Parque Alexandre
 Cotia Sao Paulo - Brasil
 CEP: 06714-150
 Phone: 55-11-4612-1122
 FAX: 55-11-4612-2219
 e-mail: fabio.queiroz@bras.com.br

Lancer Chile Ltda. - Chile

Contact: Heriberto Concha
 Vicuna Mackenna 3019, San Joaquin
 Santiago, Chile
 Phone: 56-2-552-1657
 FAX: 56-2-552-1961
 e-mail: hconcha@lancer-intl.com

Lancer Pacific**International Sales**

6655 Lancer Blvd.
 San Antonio, TX 78219
 Phone: (210) 310-7000
 FAX: (210) 310-7242
 1-800-729-1500
 e-mail: asia@lancercorp.com

Australia

Lancer Pacific Pty Ltd
 5 Toogood Avenue
 Beverley SA 5009
 Australia
 Phone: 61-8-8268-1388
 FAX: 61-8-8268-1978
 e-mail: ian-lunniss@lancer-pacific.com.au
 steve-sotiriou@lancer-pacific.com.au

Lancer Pacific Pty Ltd

7 Slough Avenue
 Silverwater, NSW, 2128
 Sydney, Australia
 Phone: 61-2-9648-6840
 FAX: 61-2-9648-6850
 e-mail: richard-abraham@lancer-pacific.com.au
 fiore-alvaro@lancer-pacific.com.au
 (for Beer)
 rob-burdock@lancer-pacific.com.au
 (Senior Director - Asia)

Lancer Pacific Pty Ltd
 55 Keele Street
 Collingwood
 Melbourne Victoria 3066
 Australia
 Phone: 03 8415 1920
 FAX: 03 8415 1929
 e-mail: glenn-blakiston@lancer-pacific.com.au

Lancer Pacific Pty Ltd
 Unit 31, 284 Musgrave Drive
 Coopers Plains 4108
 Queensland
 Australia
 Phone: 61-7-3274-5700
 FAX: 61-7-3875-1805
 e-mail: brett-thomson@lancer-pacific.com.au

New Zealand

Lancer Pacific Ltd
 9 O'Rorke Street
 Onehunga, Auckland
 New Zealand
 Phone: 64-9-634-3612
 FAX: 64-9-634-1472
 e-mail: phil-mason@lancer-pacific.com.au

Hong Kong

Patrick Co - Area Manager - Asia
 Phone: 852-29670900
 FAX: 852-30105882
 e-mail: patrickco@lancer-asia.com

Lancer Authorized Distributors**Shanghai Freser International Co Ltd. - China**

1856, Hu Tai Road
 Shanghai, 200436, China
 Phone: 86-21-5650-3555
 FAX: 86-21-5650-2666
 e-mail: daniel@freser.com.cn

Freser (HK) Company Ltd - Hong Kong

Flat A, 24/F., Houston Industrial Bldg.
 32-40 Wang Lung Street
 Tsuen Wan, N. T., Hong Kong
 Phone: 852-2408-2595
 FAX: 852-2408-2605
 e-mail: freserhk@netvigator.com

P.T. Ciptapratama Sentosamakmur - Indonesia

Jl. Anggrek Nelly Murni, Blok A - 39, Slipi
 Jakarta 11480, Indonesia
 Phone: 62-21-532-3737
 FAX: 62-21-532-3666
 e-mail: ciptasm@indosat.net.id

Hayakawa Sanki - Japan

Hayakawa Sanki, Inc.
 1-13-13, Kayaba-cho
 Nihonbashi, Chuo-ku
 Tokyo, 103-0025
 Japan
 Phone: 03-5651-1481
 FAX: 03-5651-1445
 e-mail: SANKI10217@aol.com

Tahoe Corporation - Korea

Tahoe Corporation
 2FL, 835-66 Yocksam-dong
 Kangnam-Ku
 Seoul, Korea
 Phone: 82-2-557-5612, -5614
 FAX: 82-2-557-5615
 e-mail: tahoe@netgo.com

Freser (MALAYSIA) SDN. BHD. - Malaysia

No. 31, Jalan TPP 5/13, Taman
 Perindustrian Puchong, Seksyen 5,
 47100 Puchong, Selangor, Malaysia
 Phone: 60-3-8061-6666
 FAX: 60-3-8062-1007
 e-mail: freser@tm.net.my

R.B.P. Industrial Sales Inc - Philippines

Unit 20, Facilities Centre Bldg.
 548 Shaw Blvd
 Mandaluyong City, Philippines
 Phone: 632-531-1215/1221/1289
 FAX: 632-531-1271
 e-mail: rbpsales@info.com.ph

Freser (S) Pte Ltd - Singapore

Blk 998 Toa Payoh North
 #04-12/14
 Singapore 318993
 Phone: 65-6352-0943
 FAX: 65-6352-8594
 e-mail: fresersin@pacific.net.sg

Freser International Corporation - Taiwan

No. 76, Gui-Sui Street
 Taipei 103, Taiwan R.O.C.
 Phone: 886-2-2553-1555
 FAX: 886-2-2553-2742
 e-mail: allen@intl.freser.com.tw

Freser (Thailand) Co Ltd - Thailand

3/15 Moo 3, Soi Ruammitr
 Tivanont Road, Banmai
 Pakkred, Nonthaburi, 11120
 Thailand
 Phone: 662-961-9543
 FAX: 662-961-9550
 e-mail: prachat@asianet.co.th

Lancer - Indian Sub-Continent**India**

Shabbir Shafiqi - Area Manager
 India and Sub-Continent
 B-7, Pannalal Silk Mill Compounds
 78, LBS Marg, Bhandup (W)
 Mumbai 400-078, India
 Phone: 91-22-2561-6665
 Cel No.: 91-98-2029-5252
 FAX: 91-22-5637-4018
 e-mail: shafiqis@vsnl.com

Lancer Authorized Distributors**Western Refrigeration Ltd - India**

B-7, Pannalal Silk Mill Compounds
 78 L.B.S. Marg, Bhandup (W)
 Mumbai 400-078, India
 Phone: 91-22-2561-6665
 FAX: 91-22-2562-2257
 e-mail: western@bom5.vsnl.net.in

Bengal Marketing Company - Bangladesh

Skylark Point (6th Floor)
 Room #G-2
 24/A Bijoy Nagar,
 Dhaka-1000, Bangladesh
 Phone: 880-2-934-2987
 FAX: 880-2-935-0127
 e-mail: bmc@dhaka.agni.com

Dynamic Equipment - Pakistan

Dynamic Equipment and Controls (Pvt.) Ltd.
 F-1/23, Canal Cottages, Block-D.
 New Muslim Town.
 Lahore. Pakistan.
 Phone: 0092-42-583-6737
 0092-42-583-6787
 FAX: 0092-42-586-7924
 e-mail: info@dynamic-eqpt.com.pk

Lancer USA

Manufacturing Locations

Foster Road Facilities

6655 Lancer Blvd
San Antonio, TX 78219
Phone: (210) 310-7000
MFG FAX: (210) 310-7088
ENG FAX: (210) 310-7096
ACCT FAX: (210) 310-7091
PURCH FAX: (210) 310-7094

Lancer FBD

5620 Business Park
San Antonio, TX 78218
Phone: (210) 666-0544
FAX: (210) 666-2044

Lancer Ice Link

6655 Lancer Blvd
San Antonio, TX 78219
Phone: (210) 310-7174
FAX: (210) 310-7245

Remanufacturing

6655 Lancer Blvd
San Antonio, TX 78219
Phone: (210) 310-7356
FAX: (210) 310-7261
1-800-729-1550

Lancer North America

USA - Canada Sales

6655 Lancer Blvd.
San Antonio, TX 78219
Phone: (210) 310-7000
SALES FAX: (210) 310-7245
CUSTOMER SERVICE FAX: (210) 310-7250
1-800-729-1500

Georgia Office

1125 Northmeadow Parkway, Suite 116
Roswell, GA 30076
Phone: (770) 343-8828
FAX: (770) 475-8646
1-800-729-1750

Lancer Authorized Distributors

Advanced Beverage Solutions (ABS)

1425 South Wright Blvd.
Schaumburg, IL 60193
Phone: (847) 524-1707
(877) 814-2271
FAX: (847) 524-1710
www.absone.com

Bevco

6900 Camille Avenue
Oklahoma City, OK 73149
Phone: (405) 672-7770
FAX: (405) 672-7443
e-mail: info@bevcoinc.com

Joe Kirwan Company

119 White Oak Lane
Old Bridge, NJ 08857
Phone: (732) 679-1900
FAX: (732) 679-9236
e-mail: sales@jkirwan.com

L & M Beverage Equipment Co. Inc.

12510 Santa Fe Trail Drive
Lenexa, KS 66215
Phone: (913) 888-8988
FAX: (913) 888-9137
e-mail: L7mco@aol.com

(Update #43 - as of March 05, 2003)

Ernest F. Mariani Company

614 West 600 South
Salt Lake City, UT 84104
Phone: (801) 359-3744
FAX: (801) 531-9615
e-mail: febell@efmco.com, or
clay@efmco.com

Mark Powers & Company, Inc.

P.O. Box 72
1821 Henry Street
Guntersville, AL 35976
Phone: (256) 582-6620
FAX: (256) 582-8533
e-mail: sales@markpowers-and-company.com

Maurer Supply, Inc.

843 Rainier Avenue South
Seattle, WA 98144
Phone: (206) 323-8640
FAX: (206) 323-9286
e-mail: maurersupply@qwest.net

Simgo Ltd.

5122 Timberlea Blvd.
Mississauga, Ontario L4W 2S5
Canada
Phone: 905-602-5800
FAX: 905-602-5804
e-mail: simgo@simgo.com

Simgo (B.C.) Ltd.

16-8125 - 130th Street
Surrey, B.C. V3W 7X4
Canada
Phone: 604-590-4022
FAX: 604-590-1601

Lancer Europe

Belgium - European Central Office

Lancer Europe, S.A.
Mechelsesteenweg 592
B-1930 Zaventem
Belgium
Phone: 32-2-755-2390
FAX: 32-2-755-2399
e-mail: lancer.europe@glo.be

England

17 Bembridge Gardens
Ruislip, Middlesex
HA4 7ER, England
Phone: 44-1895672667
FAX: 44-1895637537
e-mail: court4lancer@msn.com

Hungary

H-2100 Gödöllő
Isaszegi út 67
Hungary
Phone: 36-28-417-179
FAX: 36-28416-881
e-mail: bodolai@compuserve.com

Lancer Authorized Distributors

Complete Beverage Services, Ltd.

Republic of Ireland and Northern Ireland

Gortrush Industrial Estate
Omagh County Tyrone
Northern Ireland
Office: 44-1662 250 008
FAX: 44-1662-252-991

Intercom - Spain

Intercom
Avda. Concha Espina 8
28036 Madrid Spain
Phone: 34-91-564 6900
FAX: 34-91-564 3065
e-mail: jmorales@bevserve.com

Lancer Russia

Lancer Sales Company

Vyatskaya Street 27
Building 15, 4th Floor
125015 Moscow, Russia
Phone: 7-095-745-7108
FAX: 7-095-745-7109
Mobile Phone: 7-095-991-7778
7-095-139-0335
e-mail: lancer@online.ru
vdemkin@ktv.ru

Lancer Middle East / Africa

Elsayed Moniem - Technical Manager
Lancer Middle East/Africa
7 Mubarak Street
East Ain Shams 11311
Cairo, Egypt
Phone/FAX: 2-02-49-35-395
Mobile Phone (GSM): 2-010-500-4007
e-mail: elsayed_lancer@msn.com

Lancer Authorized Distributor

DispenseTech - South Africa

P.O. Box 17495
Sunward Park, 1470
South Africa
Phone: 27-11-397-7455
FAX: 27-11-397-7648
e-mail: david@dispensetech.co.za

Lancer Latin America

Latin America Sales

6655 Lancer Blvd.
San Antonio, TX 78219
Phone: (210) 310-7000
FAX: (210) 310-7245
1-800-729-1500
e-mail: latinamerica@lancercorp.com

Lancer de México, S.A. de C.V.

Contact: Gerardo Canales
Calle Lerdo De Tejada #544 PTE.
Col. Las Villas
San Nicolas De Los Garza, N.L.
Monterrey, N. L., México C.P. 66422
Phone: (52)-81-83-52-85-32
Phone: (52)-81-83-52-85-34
Phone: (52)-81-83-52-53-60
FAX: (52)-81-83-32-54-10
e-mail: direccion@lancer.com.mx

Lancer de México, S.A. de C.V.

Branch Office, Mexico City

Contact: Carlos Lopez
Lancer de Mexico S.A. de C.V.
Sucursal Mexico D.F.
Calle: Centeotl No. 112
Colonia: La Preciosa
Delegacion: Azcapotzalco
Mexico D.F. C.P. 02460
Phone: (52)-55-53-53-89-28
Phone: (52)-55-53-53-89-26
Phone: (52)-55-53-53-88-60
Phone: (52)-55-53-53-88-21
FAX: (52)-55-53-52-46-30
e-mail: lancer@prodigy.net.mx

Lancer de México, Branch Office, Cd. Juarez

Contact: Yolanda Puga
Lancer de Mexico
Camino de la Lomas # 4380
Col. Partido Iglesias
Cd. Juarez, CHIH, C.P. 32617
México
Phone and FAX: 521-605-00-86
Phone: 521-605-00-87
e-mail: cdjuarez@lancer.com.mx

(Continued on reverse)