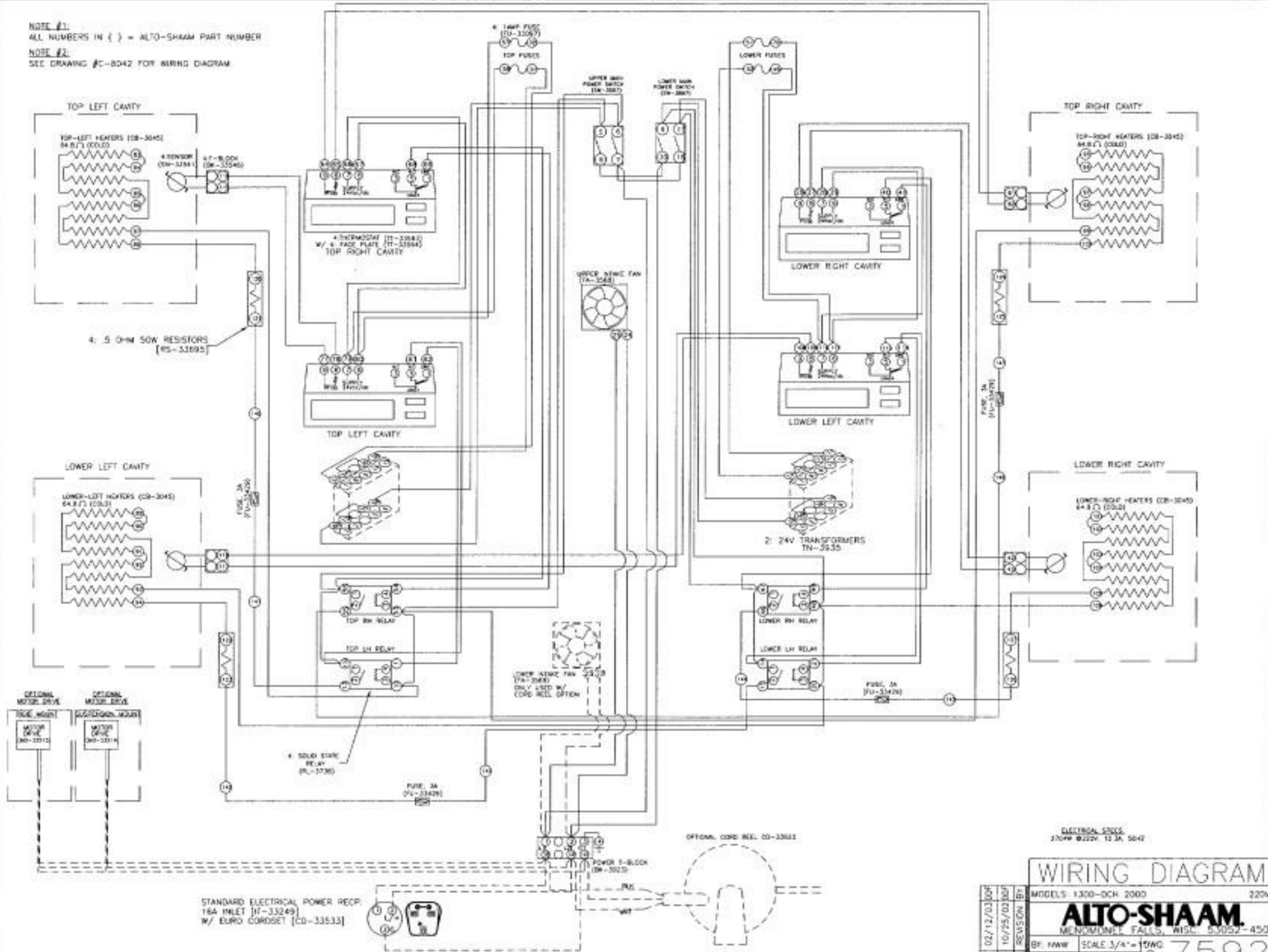
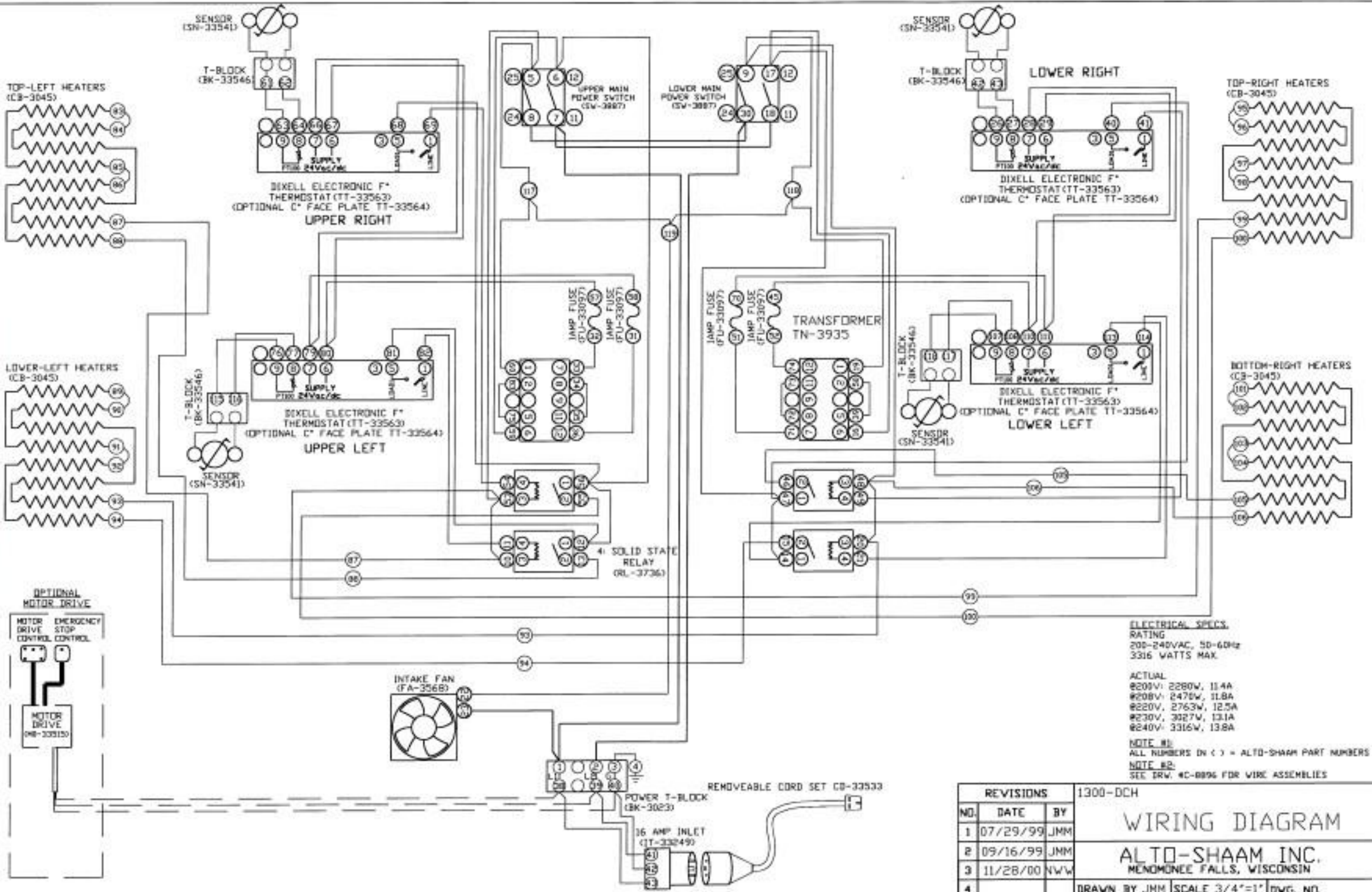


NOTE #1:
ALL NUMBERS IN () = ALTO-SHAAM PART NUMBER
NOTE #2:
SEE DRAWING #C-8042 FOR WIRING DIAGRAM





ELECTRICAL SPECS. RATING
 200-240VAC, 50-60Hz
 3316 WATTS MAX.

ACTUAL
 @200V: 2280W, 11.4A
 @208V: 2475W, 11.8A
 @220V: 2763W, 12.5A
 @230V: 3027W, 13.1A
 @240V: 3316W, 13.8A

NOTE #1:
 ALL NUMBERS IN () = ALTO-SHAAM PART NUMBERS
NOTE #2:
 SEE TRV. #C-8896 FOR WIRE ASSEMBLIES

REVISIONS			1300-DCH			
NO.	DATE	BY	WIRING DIAGRAM			
1	07/29/99	JMM	ALTO-SHAAM INC. MEMONEE FALLS, WISCONSIN			
2	09/16/99	JMM				
3	11/28/00	NWW				
4			DRAWN BY JMM	SCALE 3/4"=1'	DWG. NO.	
5			APP'D	DAR	DATE 05/07/99	B-7514