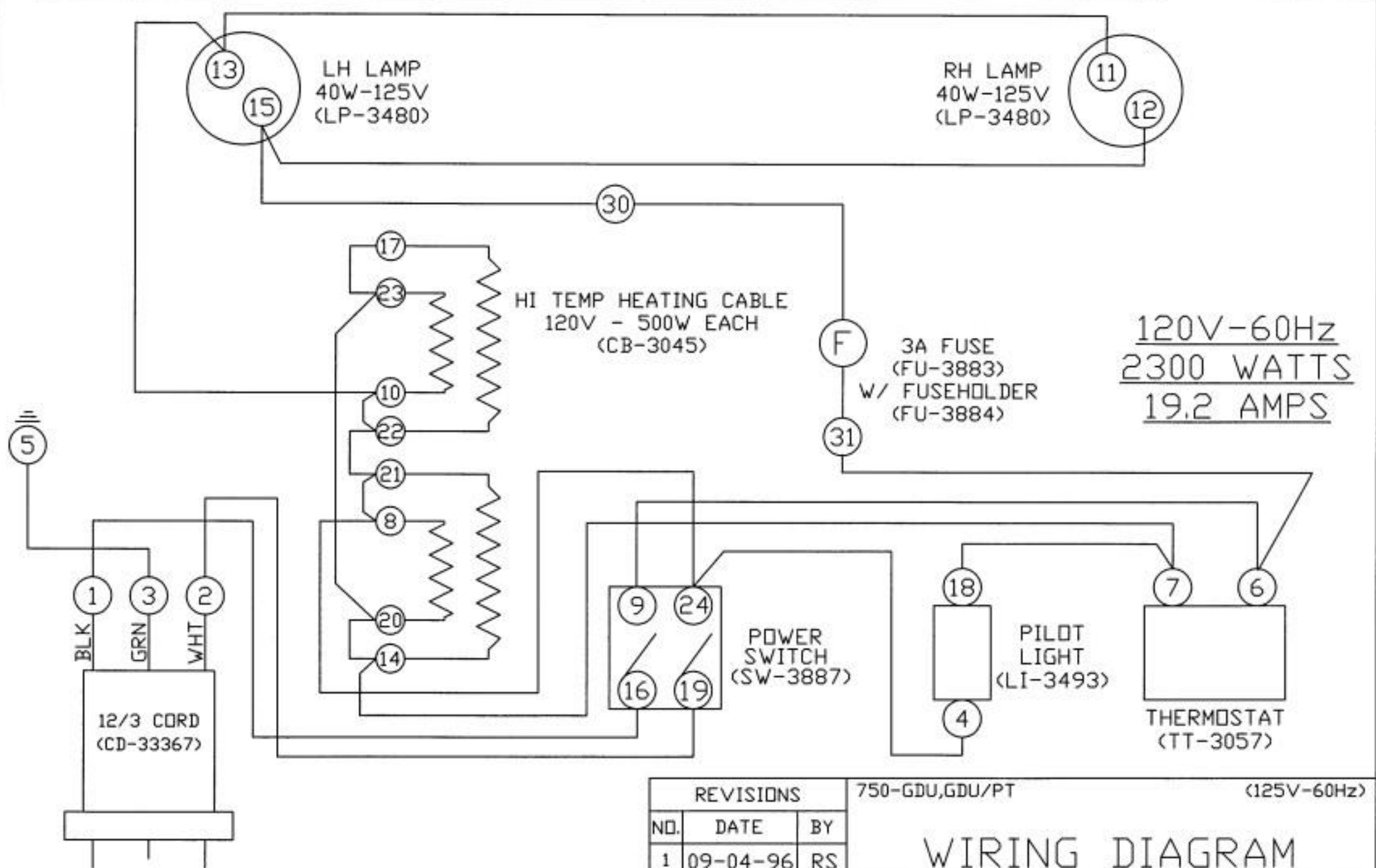


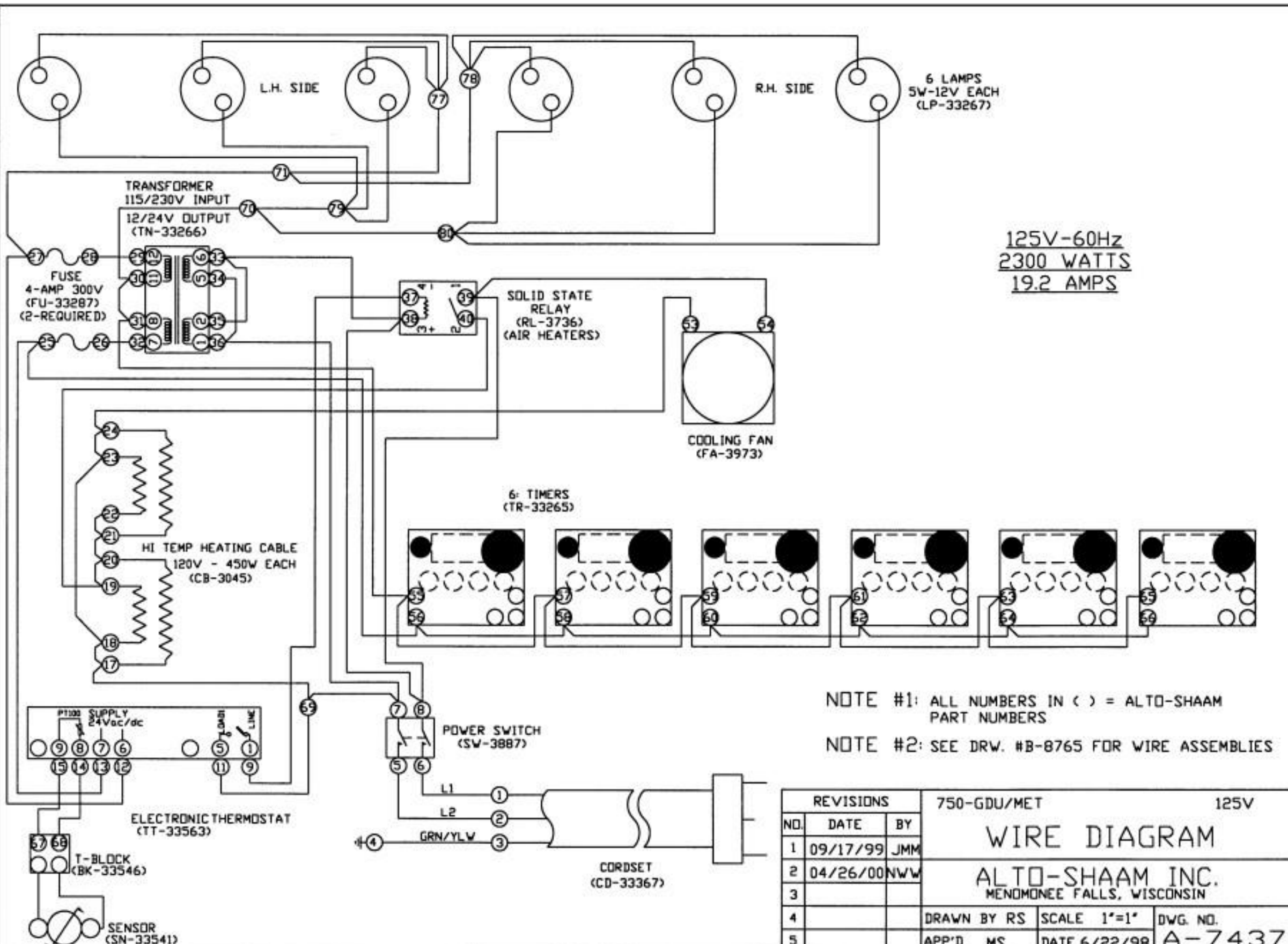
REVISIONS			750-GDU,GDU/PT		(230V-50Hz)	
NO.	DATE	BY				
1	04/28/89	ALD	WIRING DIAGRAM ALTO-SHAAM INC. MENOMONEE FALLS, WISCONSIN			
2	07/18/90	ALD				
3	01/27/92	ALD				
4	07/16/97	RS	DRAWN BY AHL	SCALE 1"=1"	DWG. NO.	
5			APP'D AHL	DATE 8/22/88	A-7310	



NOTE #1: ALL NUMBERS IN () = ALTO-SHAAM PART NUMBERS

NOTE #2: SEE DRW. #B-8609 FOR WIRE ASSEMBLIES

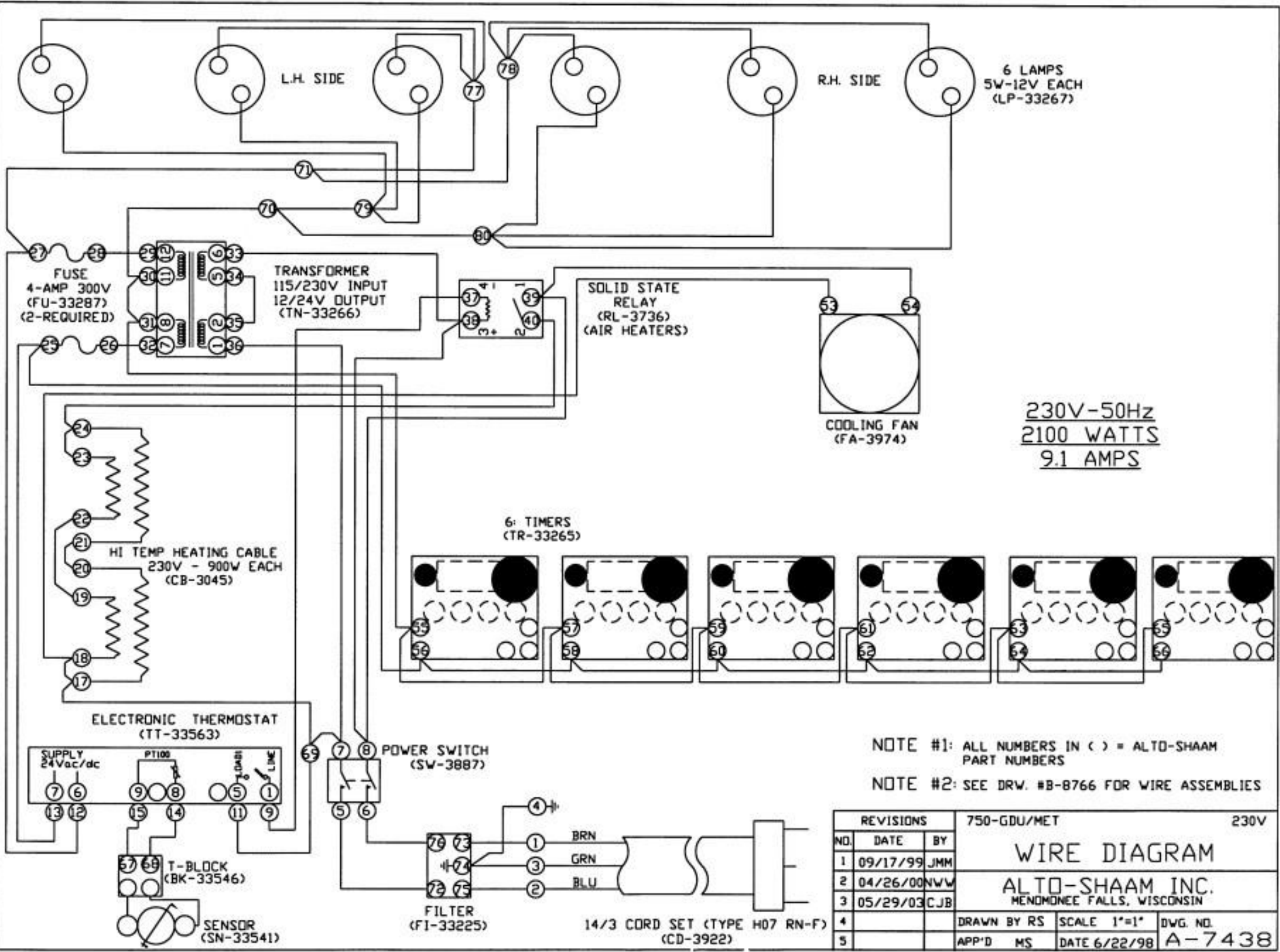
REVISIONS			750-GDU,GDU/PT		(125V-60Hz)	
NO.	DATE	BY				
1	09-04-96	RS	<p style="text-align: center;">WIRING DIAGRAM</p> <p style="text-align: center;">ALTO-SHAAM INC.</p> <p style="text-align: center;">MENDONNEE FALLS, WISCONSIN</p>			
2	03-12-97	RS				
3	07-16-97	RS				
4	09/09/02	DF	DRAWN BY ALD	SCALE 1"=1"	DWG. NO.	
5			APP'D ALD	DATE 4-23-92	A-7335	



125V-60Hz
2300 WATTS
19.2 AMPS

NOTE #1: ALL NUMBERS IN () = ALTO-SHAAM PART NUMBERS
NOTE #2: SEE DRW. #B-8765 FOR WIRE ASSEMBLIES

REVISIONS			750-GDU/MET	125V	
NO.	DATE	BY	WIRE DIAGRAM		
1	09/17/99	JMM			
2	04/26/00	NWW	ALTO-SHAAM INC. MENDOTA FALLS, WISCONSIN		
3					
4			DRAWN BY RS	SCALE 1"=1"	DWG. NO.
5			APP'D MS	DATE 6/22/98	A-7437



6 LAMPS
5W-12V EACH
(LP-33267)

230V-50Hz
2100 WATTS
9.1 AMPS

NOTE #1: ALL NUMBERS IN () = ALTO-SHAAM PART NUMBERS

NOTE #2: SEE DRW. #B-8766 FOR WIRE ASSEMBLIES

REVISIONS			750-GDU/MET	230V
NO.	DATE	BY	WIRE DIAGRAM	
1	09/17/99	JMM	ALTO-SHAAM INC.	
2	04/26/00	NWW	MENDOTA FALLS, WISCONSIN	
3	05/29/03	CJB		
4			DRAWN BY RS	SCALE 1"=1"
5			APP'D MS	DATE 6/22/98
			DWG. NO.	A-7438