

**Series e-82SC**  
Replacement Parts





## Index

Nameplate Data.....	3
Exploded View - Standard Seal Configuration.....	4

### Standard Configuration (-F)

2.5x7, 3x7, 4x7, 6x7 (Small Bore).....	5
4x7, 6x7 (Large Bore).....	7
2.5x9.5, 3x9.5, 4x9.5, 6x9.5 (Small Bore).....	9
2.5x9.5, 6x9.5 (Large Bore).....	11
3x11, 4x11 (Small Bore).....	13
4x11, 6x11 (Large Bore).....	15



**DATA SHOWN ABOVE ARE FOR REPRESENTATION ONLY**

The pump nameplate identifies the pump by pipe size, pump construction and impeller diameter as shown above. In this example, the nameplate shows a [Series](#) e-82SC, size 3x3x7 in stainless steel fitted (SSF) construction. The impeller diameter is 7" and the motor is 5 HP, 1750 RPM operating speed. The serial number specifically identifies the pump for future reference.

DO NOT REMOVE THE NAMEPLATE. It is important when ordering replacement parts to furnish complete nameplate data.

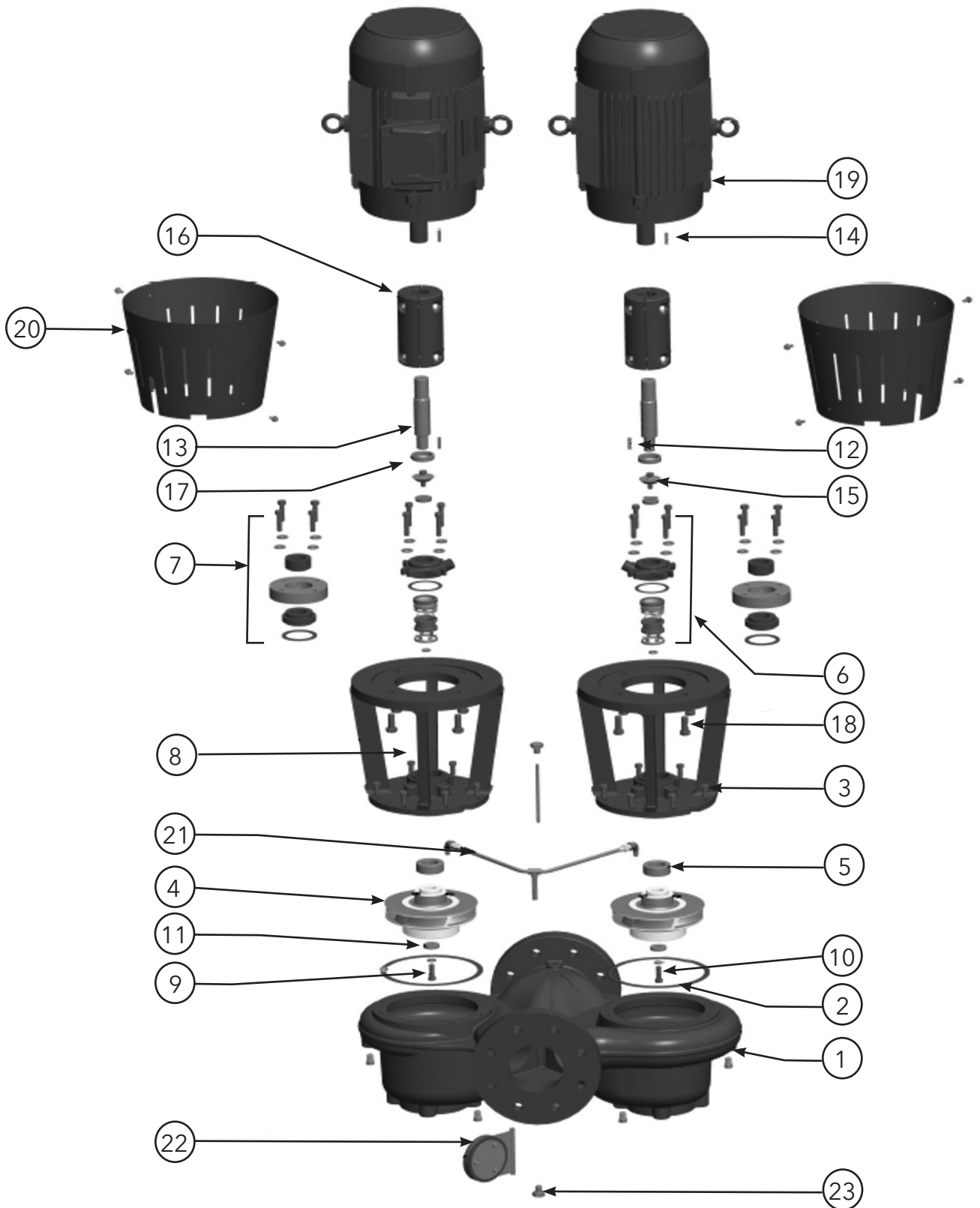
The [Series](#) e-82SC pump is furnished in "Stuffing Box" construction. The "Stuffing Box" model has two seal configurations:

- e-82SC with inside seal (standard)**
- e-82SC with outside seal (optional)**

To ensure the correct parts are selected, use the following procedure:

1. Determine from the nameplate the pump size, seal configuration, pump construction and impeller diameter.
2. Measure the shaft diameter.
3. Refer to index for the page number of the parts breakdown for the specific size pump.
4. Find the proper column in the parts breakdown for the pump construction involved.
5. Select part numbers using the exploded view numbered drawing for identification. Where shaft diameter affects parts selection, use the measurement secured in Step 2.
6. Motor brackets vary with motor frame sizes. Use the motor frame number (found on the motor nameplate) to select the proper motor bracket. Supply complete motor nameplate data when ordering replacement motors.

# Standard Seal – Exploded View



MOTOR FRAMES 143TC THROUGH 256TC						
ITEM	DESCRIPTION	QTY	2.5X2.5X7	3X3X7	4X4X7	6X6X7
1	Volute	1	P2004898	P2004866	P2004874	P2004921
	Pipe Plug 1/4	6	P39040	P39040	P39040	P39040
2	Volute Gasket	2	P57700	P57700	P57700	P57700
3	Volute Capscrew	16	P40020	P40020	P40020	P40020
4	Impeller (State Diameter) 7" Full Diameter	2	P2000854	P2000850	P2000858	P2001003
5	Throttle Bushing (Bearing)	2	P71378	P71378	P71378	P71378
9	Impeller Bolt	2	P52350	P52350	P52350	P52350
10	Impeller Lockwasher	2	J23874	J23874	J23874	J23874
11	Impeller Washer	2	P46380	P46380	P46380	P46380
12	Impeller Key	2	P49369	P49369	P49369	P49369
13	Shaft	2	P2002870	P2002870	P2002870	P2002870
14	Coupler Key	2	P75182	P75182	P75182	P75182
15	Tapered Washer	2	P2002874	P2002874	P2002874	P2002874
15	Tapered Washer Capscrew	2	510830	510830	510830	510830
15	Tapered Washer Lockwasher	2	P16690	P16690	P16690	P16690
20	Guard	2	P71385	P71385	P71385	P71385
20	Guard Screw	8	P86085	P86085	P86085	P86085
22	Flapper assembly	1	P2005003	P2005004	P2005008	P2005006
23	Self sealing screw	2	P2004967	P2004967	P2004967	P2004967
INSIDE SEAL MECHANICAL SEAL						
6	Mechanical Seal Standard - EPR/Carbon/Ceramic/SS	2	P75221	P75221	P75221	P75221
6	Mechanical Seal Optional - EPR/SilCar/SilCar/SS	2	P2001703	P2001703	P2001703	P2001703
6	Mechanical Seal Optional - FMK (Viton®)/Carbon/Ceramic/SS	2	P75225	P75225	P75225	P75225
6	Mechanical Seal Optional - EPR/Carbon/TungCar/SS	2	P75223	P75223	P75223	P75223
6	Cap	2	P75214	P75214	P75214	P75214
6	Capscrew	8	H28100	H28100	H28100	H28100
6	Gasket	2	P85077	P85077	P85077	P85077
6	Snap Ring	2	P75218	P75218	P75218	P75218
6	Washer	8	P44580	P44580	P44580	P44580
OUTSIDE SEAL MECHANICAL SEAL						
7	Mechanical Seal Standard - EPR/Carbon/Ceramic/SS	2	P75202	P75202	P75202	P75202
7	Mechanical Seal Option - FMK (Viton®)/Carbon/Ceramic/SS	2	P2001063	P2001063	P2001063	P2001063
7	Capscrew	8	H52100	H52100	H52100	H52100
7	Gland	2	P75204	P75204	P75204	P75204
7	Washer	8	P44580	P44580	P44580	P44580
MOTOR FRAMES 143TC-145TC						
8	Motor Bracket (Inside Seal)	2	P2002485	P2002485	P2002485	P2002485
8	Motor Bracket (Outside Seal)	2	P2002486	P2002486	P2002486	P2002486
17	Setscrew Collar	2	P2002492	P2002492	P2002492	P2002492
17	Set Screw	6	P71386	P71386	P71386	P71386
18	Motor Bracket Capscrew	8	DJ0071	DJ0071	DJ0071	DJ0071
19	Motor Key	2	AC1642	AC1642	AC1642	AC1642
16	Coupler, Split	2	P2002487	P2002487	P2002487	P2002487
16	Capscrew	8	DJ0042	DJ0042	DJ0042	DJ0042
16	Hex Nut	8	P44190	P44190	P44190	P44190
16	Lockwasher	8	P44620	P44620	P44620	P44620
MOTOR FRAMES 182TC-184TC						
8	Motor Bracket (Inside Seal)	2	P70928	P70928	P70928	P70928
8	Motor Bracket (Outside Seal)	2	P70929	P70929	P70929	P70929
17	Setscrew Collar	2	P70995	P70995	P70995	P70995
17	Set Screw	6	P71386	P71386	P71386	P71386
18	Motor Bracket Capscrew	8	P13780	P13780	P13780	P13780
19	Motor Key	2	P75189	P75189	P75189	P75189
16	Coupler, Split	2	P2002864	P2002864	P2002864	P2002864
16	Capscrew	8	DJ0042	DJ0042	DJ0042	DJ0042
16	Hex Nut	8	P44190	P44190	P44190	P44190
16	Lockwasher	8	P44620	P44620	P44620	P44620

ITEM	DESCRIPTION	QTY	2.5X2.5X7	3X3X7	4X4X7	6X6X7
<b>MOTOR FRAMES 213TC-215TC</b>						
8	Motor Bracket (Inside Seal)	2	P70928	P70928	P70928	P70928
8	Motor Bracket (Outside Seal)	2	P70929	P70929	P70929	P70929
17	Setscrew Collar	2	P70996	P70996	P70996	P70996
17	Set Screw	6	P71387	P71387	P71387	P71387
18	Motor Bracket Capscrew	8	P13780	P13780	P13780	P13780
19	Motor Key	2	AC0523	AC0523	AC0523	AC0523
16	Coupler, Split	2	P2002865	P2002865	P2002865	P2002865
16	Capscrew	8	P75206	P75206	P75206	P75206
16	Hex Nut	8	P44190	P44190	P44190	P44190
16	Lockwasher	8	P44620	P44620	P44620	P44620
<b>MOTOR FRAMES 254TC-256TC</b>						
8	Motor Bracket (Inside Seal)	2	P70928	P70928	P70928	P70928
8	Motor Bracket (Outside Seal)	2	P70929	P70929	P70929	P70929
17	Setscrew Collar	2	P70997	P70997	P70997	P70997
17	Set Screw	6	P71387	P71387	P71387	P71387
18	Motor Bracket Capscrew	8	P13780	P13780	P13780	P13780
19	Motor Key	2	P75190	P75190	P75190	P75190
16	Coupler, Split	2	P2002866	P2002866	P2002866	P2002866
16	Capscrew	8	P75207	P75207	P75207	P75207
16	Hex Nut	8	P44190	P44190	P44190	P44190
16	Lockwasher	8	P44620	P44620	P44620	P44620
<b>FLUSH PIPE ASSEMBLY</b>						
21	Nipple	2	DL0025	DL0025	DL0025	DL0025
21	Straight Tee	2	P75181	P75181	P75181	P75181
21	Bushing, Hex 0.25MNPTx0.12FNPT - Steel	2	511849	511849	511849	511849
21	Hose	2	P2002542	P2002542	P2002542	P2002543
21	Valve, vent	2	P75255	P75255	P75255	P75255
21	Elbow, Street 0.25	2	AC0530	AC0530	AC0530	AC0530
21	Bushing, Hex 0.25MNPTx0.12FNPT	2	DF0003	DF0003	DF0003	DF0003

MOTOR FRAMES 284TC THROUGH 365TC				
ITEM	DESCRIPTION	QTY	4X4X7	6X6X7
1	Volute	1	P2004874	P2004921
	Pipe Plug 1/4	6	P39040	P39040
2	Volute Gasket	2	P57700	P57700
3	Volute Capscrew	16	P40020	P40020
4	Impeller (State Diameter) 7" Full Diameter	2	P2000860	P2001005
5	Throttle Bushing (Bearing)	2	P71379	P71379
9	Impeller Bolt	2	P13800	P13800
10	Impeller Lockwasher	2	J23875	J23875
11	Impeller Washer	2	P51230	P51230
12	Impeller Key	2	P49372	P49372
13	Shaft	2	P2002872	P2002872
14	Coupler Key	2	P75183	P75183
15	Tapered Washer	2	P2002875	P2002875
15	Tapered Washer Capscrew	2	510830	510830
15	Tapered Washer Lockwasher	2	P16690	P16690
20	Guard	2	P2004734	P2004734
20	Guard Screw	8	P86085	P86085
22	Flapper assembly	1	P2005008	P2005006
23	Self sealing screw	2	P2004967	P2004967
INSIDE SEAL MECHANICAL SEAL				
6	Mechanical Seal Standard - EPR/Carbon/Ceramic/SS	2	P75222	P75222
6	Mechanical Seal Optional - EPR/SilCar/SilCar/SS	2	P2001704	P2001704
6	Mechanical Seal Optional - FMK (Viton®)/Carbon/Ceramic/SS	2	P75226	P75226
6	Mechanical Seal Optional - EPR/Carbon/TungCar/SS	2	P75224	P75224
6	Cap	2	P75216	P75216
6	Capscrew	8	H28100	H28100
6	Gasket	2	P75201	P75201
6	Snap Ring	2	P75219	P75219
6	Washer	8	P44580	P44580
OUTSIDE SEAL MECHANICAL SEAL				
7	Mechanical Seal Standard - EPR/Carbon/Ceramic/SS	2	P75203	P75203
7	Mechanical Seal Optional - FMK (Viton®)/Carbon/Ceramic/SS	2	P2001064	P2001064
7	Capscrew	8	H52100	H52100
7	Gland	2	P75205	P75205
7	Washer	8	P44580	P44580
MOTOR FRAMES 284TC-286TC				
8	Motor Bracket (Inside Seal)	2	P2004696	P2004696
8	Motor Bracket (Outside Seal)	2	P2004702	P2004702
17	Setscrew Collar	2	P71373	P71373
17	Set Screw	6	P71388	P71388
18	Motor Bracket Capscrew	8	P13780	P13780
19	Motor Key	2	P75191	P75191
16	Coupler, Split	2	P2002868	P2002868
16	Capscrew	8	P44250	P44250
16	Hex Nut	8	P52380	P52380
16	Lockwasher	8	P16690	P16690
MOTOR FRAMES 284TSCTC-286TSCTC				
8	Motor Bracket (Inside Seal)	2	P2004696	P2004696
8	Motor Bracket (Outside Seal)	2	P2004702	P2004702
17	Setscrew Collar	2	P70997	P70997
17	Set Screw	6	P71387	P71387
18	Motor Bracket Capscrew	8	P13780	P13780
19	Motor Key	2	P75191	P75191
16	Coupler, Split	2	P2004697	P2004697
16	Capscrew	8	P44250	P44250
16	Hex Nut	8	P52380	P52380
16	Lockwasher	8	P16690	P16690

ITEM	DESCRIPTION	QTY	4X4X7	6X6X7
<b>MOTOR FRAMES 324TSC-326TSC</b>				
8	Motor Bracket (Inside Seal)	2	P2004695	P2004695
8	Motor Bracket (Outside Seal)	2	P2004701	P2004701
17	Setscrew Collar	2	P71373	P71373
17	Set Screw	6	P71388	P71388
18	Motor Bracket Capscrew	8	DJ0132	DJ0132
19	Motor Key	2	P75192	P75192
16	Coupler, Split	2	P2002869	P2002869
16	Capscrew	8	P44250	P44250
16	Hex Nut	8	P52380	P52380
16	Lockwasher	8	P16690	P16690
<b>MOTOR FRAMES 364TSCTC-365TSC</b>				
8	Motor Bracket (Inside Seal)	2	N/A	P2004695
8	Motor Bracket (Outside Seal)	2		P2004701
17	Setscrew Collar	2		P71373
17	Set Screw	6		P71388
18	Motor Bracket Capscrew	8		DJ0132
19	Motor Key	2		P75192
16	Coupler, Split	2		P2002869
16	Capscrew	8		P44250
16	Hex Nut	8		P52380
16	Lockwasher	8		P16690
<b>FLUSH PIPE ASSEMBLY</b>				
21	Nipple	2	DL0025	DL0025
21	Straight Tee	2	P75181	P75181
21	Bushing, Hex 0.25MNPTx0.12FNPT - Steel	2	511849	511849
21	Hose	2	P2002543	P2002543
21	Valve, vent	2	P75255	P75255
21	Elbow, Street 0.25	2	AC0530	AC0530
21	Bushing, Hex 0.25MNPTx0.12FNPT	2	DF0003	DF0003

MOTOR FRAMES 143TC THROUGH 256TC						
ITEM	DESCRIPTION	QTY	2.5X2.5X9.5	3X3X9.5	4X4X9.5	6X6X9.5
1	Volute	1	P2004945	P2004738	P2004882	P2004929
	Pipe Plug 1/4	6	P39040	P39040	P39040	P39040
2	Volute Gasket	2	P48690	P48690	P48690	P48690
3	Volute Capscrew	24	P03470	P03470	P03470	P03470
4	Impeller (State Diameter) 9.5" Full Diameter	2	P2000844	P2001745	P2000828	P2000915
5	Throttle Bushing (Bearing)	2	P71378	P71378	P71378	P71378
9	Impeller Bolt	2	P52350	P52350	P52350	P52350
10	Impeller Lockwasher	2	J23874	J23874	J23874	J23874
11	Impeller Washer	2	P46380	P46380	P46380	P46380
12	Impeller Key	2	P49369	P49369	P49369	P49369
13	Shaft	2	P2002870	P2002870	P2002870	P2002870
14	Coupler Key	2	P75182	P75182	P75182	P75182
15	Tapered Washer	2	P2002874	P2002874	P2002874	P2002874
15	Tapered Washer Capscrew	2	510830	510830	510830	510830
15	Tapered Washer Lockwasher	2	P16690	P16690	P16690	P16690
20	Guard	2	P71382	P71382	P71382	P71382
20	Guard Screw	8	P86085	P86085	P86085	P86085
22	Flapper assembly	1	P2005003	P2005004	P2005008	P2005006
23	Self sealing screw	2	P2004967	P2004967	P2004967	P2004967
INSIDE SEAL MECHANICAL SEAL						
6	Mechanical Seal Standard - EPR/Carbon/Ceramic/SS	2	P75221	P75221	P75221	P75221
6	Mechanical Seal Optional - EPR/SilCar/SilCar/SS	2	P2001703	P2001703	P2001703	P2001703
6	Mechanical Seal Optional - FMK (Viton®)/Carbon/Ceramic/SS	2	P75225	P75225	P75225	P75225
6	Mechanical Seal Optional - EPR/Carbon/TungCar/SS	2	P75223	P75223	P75223	P75223
6	Cap	2	P75214	P75214	P75214	P75214
6	Capscrew	8	H28100	H28100	H28100	H28100
6	Gasket	2	P85077	P85077	P85077	P85077
6	Snap Ring	2	P75218	P75218	P75218	P75218
6	Washer	8	P44580	P44580	P44580	P44580
OUTSIDE SEAL MECHANICAL SEAL						
7	Mechanical Seal Standard - EPR/Carbon/Ceramic/SS	2	P75202	P75202	P75202	P75202
7	Mechanical Seal Option - FMK (Viton®)/Carbon/Ceramic/SS	2	P2001063	P2001063	P2001063	P2001063
7	Capscrew	8	H52100	H52100	H52100	H52100
7	Gland	2	P75204	P75204	P75204	P75204
7	Washer	8	P44580	P44580	P44580	P44580
MOTOR FRAMES 143TC-145TC						
8	Motor Bracket (Inside Seal)	2	P2002493	P2002493	N/A	N/A
8	Motor Bracket (Outside Seal)	2	P2002494	P2002494		
17	Setscrew Collar	2	P2002492	P2002492		
17	Set Screw	6	P71386	P71386		
18	Motor Bracket Capscrew	8	DJ0071	DJ0071		
19	Motor Key	2	AC1642	AC1642		
16	Coupler, Split	2	P2002487	P2002487		
16	Capscrew	8	DJ0042	DJ0042		
16	Hex Nut	8	P44190	P44190		
16	Lockwasher	8	P44620	P44620		
MOTOR FRAMES 182TC-184TC						
8	Motor Bracket (Inside Seal)	2	P70905	P70905	P70905	N/A
8	Motor Bracket (Outside Seal)	2	P70906	P70906	P70906	
17	Setscrew Collar	2	P70995	P70995	P70995	
17	Set Screw	6	P71386	P71386	P71386	
18	Motor Bracket Capscrew	8	P13780	P13780	P13780	
19	Motor Key	2	P75189	P75189	P75189	
16	Coupler, Split	2	P2002864	P2002864	P2002864	
16	Capscrew	8	DJ0042	DJ0042	DJ0042	
16	Hex Nut	8	P44190	P44190	P44190	
16	Lockwasher	8	P44620	P44620	P44620	

ITEM	DESCRIPTION	QTY	2.5X2.5X9.5	3X3X9.5	4X4X9.5	6X6X9.5
<b>MOTOR FRAMES 213TC-215TC</b>						
8	Motor Bracket (Inside Seal)	2	P70905	P70905	P70905	P70905
8	Motor Bracket (Outside Seal)	2	P70906	P70906	P70906	P70906
17	Setscrew Collar	2	P70996	P70996	P70996	P70996
17	Set Screw	6	P71387	P71387	P71387	P71387
18	Motor Bracket Capscrew	8	P13780	P13780	P13780	P13780
19	Motor Key	2	AC0523	AC0523	AC0523	AC0523
16	Coupler, Split	2	P2002865	P2002865	P2002865	P2002865
16	Capscrew	8	P75206	P75206	P75206	P75206
16	Hex Nut	8	P44190	P44190	P44190	P44190
16	Lockwasher	8	P44620	P44620	P44620	P44620
<b>MOTOR FRAMES 254TC-256TC</b>						
8	Motor Bracket (Inside Seal)	2	N/A	N/A	P70905	P70905
8	Motor Bracket (Outside Seal)	2			P70906	P70906
17	Setscrew Collar	2			P70997	P70997
17	Set Screw	6			P71387	P71387
18	Motor Bracket Capscrew	8			P13780	P13780
19	Motor Key	2			P75190	P75190
16	Coupler, Split	2			P2002866	P2002866
16	Capscrew	8			P75207	P75207
16	Hex Nut	8			P44190	P44190
16	Lockwasher	8			P44620	P44620
<b>FLUSH PIPE ASSEMBLY</b>						
21	Nipple	2	DL0025	DL0025	DL0025	DL0028
21	Straight Tee	2	P75181	P75181	P75181	P75181
21	Bushing, Hex 0.25MNPTx0.12FNPT - Steel	2	511849	511849	511849	511849
21	Hose	2	P2002543	P2002543	P2002543	P2002544
21	Valve, vent	2	P75255	P75255	P75255	P75255
21	Elbow, Street 0.25	2	AC0530	AC0530	AC0530	AC0530
21	Bushing, Hex 0.25MNPTx0.12FNPT	2	DF0003	DF0003	DF0003	DF0003

MOTOR FRAMES 284TC THROUGH 365TC				
ITEM	DESCRIPTION	QTY	2.5X2.5X9.5	6X6X9.5
1	Volute	1	P2004945	P2004929
	Pipe Plug 1/4	6	P39040	P39040
2	Volute Gasket	2	P48690	P48690
3	Volute Capscrew	24	P03470	P03470
4	Impeller (State Diameter) 9.5" Full Diameter	2	P2000846	P2000917
5	Throttle Bushing (Bearing)	2	P71379	P71379
9	Impeller Bolt	2	P13800	P13800
10	Impeller Lockwasher	2	J23875	J23875
11	Impeller Washer	2	P51230	P51230
12	Impeller Key	2	P49372	P49372
13	Shaft	2	P2002872	P2002872
14	Coupler Key	2	P75183	P75183
15	Tapered Washer	2	P2002875	P2002875
15	Tapered Washer Capscrew	2	510830	H52100
15	Tapered Washer Lockwasher	2	P16690	P16690
20	Guard	2	P71384	P71384
20	Guard Screw	8	P86085	P86085
22	Flapper assembly	1	P2005003	P2005006
23	Self sealing screw	2	P2004967	P2004967
INSIDE SEAL MECHANICAL SEAL				
6	Mechanical Seal Standard - EPR/Carbon/Ceramic/SS	2	P75222	P75222
6	Mechanical Seal Optional - EPR/SilCar/SilCar/SS	2	P2001704	P2001704
6	Mechanical Seal Optional - FMK (Viton®)/Carbon/Ceramic/SS	2	P75226	P75226
6	Mechanical Seal Optional - EPR/Carbon/TungCar/SS	2	P75224	P75224
6	Cap	2	P75216	P75216
6	Capscrew	8	H28100	H28100
6	Gasket	2	P75201	P75201
6	Snap Ring	2	P75219	P75219
6	Washer	8	P44580	P44580
OUTSIDE SEAL MECHANICAL SEAL				
7	Mechanical Seal Standard - EPR/Carbon/Ceramic/SS	2	P75203	P75203
7	Mechanical Seal Optional - FMK (Viton®)/Carbon/Ceramic/SS	2	P2001064	P2001064
7	Capscrew	8	H52100	H52100
7	Gland	2	P75205	P75205
7	Washer	8	P44580	P44580
MOTOR FRAMES 284TC-286TC				
8	Motor Bracket (Inside Seal)	2	P2004690	P70914
8	Motor Bracket (Outside Seal)	2	P2004698	P70915
17	Setscrew Collar	2	P71373	P71373
17	Set Screw	6	P71388	P71388
18	Motor Bracket Capscrew	8	P13780	P13780
19	Motor Key	2	P75191	P75191
16	Coupler, Split	2	P2002868	P2002868
16	Capscrew	8	P44250	P44250
16	Hex Nut	8	P52380	P52380
16	Lockwasher	8	P16690	P16690
MOTOR FRAMES 284TSCTC-286TSCTC				
8	Motor Bracket (Inside Seal)	2	P2004690	N/A
8	Motor Bracket (Outside Seal)	2	P2004698	
17	Setscrew Collar	2	P70997	
17	Set Screw	6	P71387	
18	Motor Bracket Capscrew	8	P13780	
19	Motor Key	2	P75191	
20	Guard	2	P71384	
20	Guard Screw	8	P86085	
16	Coupler, Split	2	P2004697	
16	Capscrew	8	P44250	
16	Hex Nut	8	P52380	
16	Lockwasher	8	P16690	

ITEM	DESCRIPTION	QTY	2.5X2.5X9.5	6X6X9.5
<b>MOTOR FRAMES 324TSC-326TSC</b>				
8	Motor Bracket (Inside Seal)	2	P2004691	N/A
8	Motor Bracket (Outside Seal)	2	P2004699	
17	Setscrew Collar	2	P71373	
17	Set Screw	6	P71388	
18	Motor Bracket Capscrew	8	<a href="#">DJ0132</a>	
19	Motor Key	2	<a href="#">P75192</a>	
20	Guard	2	P71384	
20	Guard Screw	8	<a href="#">P86085</a>	
16	Coupler, Split	2	P2002869	
16	Capscrew	8	P44250	
16	Hex Nut	8	<a href="#">P52380</a>	
16	Lockwasher	8	<a href="#">P16690</a>	
<b>MOTOR FRAMES 364TSCTC-365TSC</b>				
8	Motor Bracket (Inside Seal)	2	P2004691	N/A
8	Motor Bracket (Outside Seal)	2	P2004699	
17	Setscrew Collar	2	P71373	
17	Set Screw	6	P71388	
18	Motor Bracket Capscrew	8	<a href="#">DJ0132</a>	
19	Motor Key	2	<a href="#">P75192</a>	
20	Guard	2	P71384	
20	Guard Screw	8	<a href="#">P86085</a>	
16	Coupler, Split	2	P2002869	
16	Capscrew	8	P44250	
16	Hex Nut	8	<a href="#">P52380</a>	
16	Lockwasher	8	<a href="#">P16690</a>	
<b>FLUSH PIPE ASSEMBLY</b>				
21	Nipple	2	DL0028	DL0028
21	Straight Tee	2	P75181	P75181
21	Bushing, Hex 0.25MNPTx0.12FNPT - Steel	2	511849	511849
21	Hose	2	P2002544	P2002544
21	Valve, vent	2	P75255	P75255
21	Elbow, Street 0.25	2	AC0530	AC0530
21	Bushing, Hex 0.25MNPTx0.12FNPT	2	DF0003	DF0003

MOTOR FRAMES 143TC THROUGH 256TC				
ITEM	DESCRIPTION	QTY	3X3X11	4X4X11
1	Volute	1	P2004746	P2004890
	Pipe Plug 1/4	6	P39040	P39040
2	Volute Gasket	2	P80765	P80765
3	Volute Capscrew	32	P13780	P13780
4	Impeller (State Diameter) 11" Full Diameter	2	P2000874	P2001171
5	Throttle Bushing (Bearing)	2	P71378	P71378
9	Impeller Bolt	2	P52350	P52350
10	Impeller Lockwasher ==	2	J23874	J23874
11	Impeller Washer	2	P46380	P46380
12	Impeller Key	2	P49369	P49369
13	Shaft	2	P2002870	P2002870
14	Coupler Key	2	P75182	P75182
15	Tapered Washer	2	P2002874	P2002874
15	Tapered Washer Capscrew	2	510830	510830
15	Tapered Washer Lockwasher	2	P16690	P16690
20	Guard	2	P71380	P71380
20	Guard Screw	8	P86085	P86085
22	Flapper assembly	1	P2005004	P2005008
23	Self sealing screw	2	P2004967	P2004967
INSIDE SEAL MECHANICAL SEAL				
6	Mechanical Seal Standard - EPR/Carbon/Ceramic/SS	2	P75221	P75221
6	Mechanical Seal Optional - EPR/SilCar/SilCar/SS	2	P2001703	P2001703
6	Mechanical Seal Optional - FMK (Viton®)/Carbon/Ceramic/SS	2	P75225	P75225
6	Mechanical Seal Optional - EPR/Carbon/TungCar/SS	2	P75223	P75223
6	Cap	2	P75214	P75214
6	Capscrew	8	H28100	H28100
6	Gasket	2	P85077	P85077
6	Snap Ring	2	P75218	P75218
6	Washer	8	P44580	P44580
OUTSIDE SEAL MECHANICAL SEAL				
7	Mechanical Seal Standard - EPR/Carbon/Ceramic/SS	2	P75202	P75202
7	Mechanical Seal Option - FMK (Viton®)/Carbon/Ceramic/SS	2	P2001063	P2001063
7	Capscrew	8	H52100	H52100
7	Gland	2	P75204	P75204
7	Washer	8	P44580	P44580
MOTOR FRAMES 213TC-215TC				
8	Motor Bracket (Inside Seal)	2	P70893	P70893
8	Motor Bracket (Outside Seal)	2	P70894	P70894
17	Setscrew Collar	2	P70996	P70996
17	Set Screw	6	P71387	P71387
18	Motor Bracket Capscrew	8	P13780	P13780
19	Motor Key	2	AC0523	AC0523
16	Coupler, Split	2	P2002865	P2002865
16	Capscrew	8	P75206	P75206
16	Hex Nut	8	P44190	P44190
16	Lockwasher	8	P44620	P44620
MOTOR FRAMES 254TSCTC-256TSCTC				
8	Motor Bracket (Inside Seal)	2	P70893	P70893
8	Motor Bracket (Outside Seal)	2	P70894	P70894
17	Setscrew Collar	2	P70997	P70997
17	Set Screw	6	P71387	P71387
18	Motor Bracket Capscrew	8	P13780	P13780
19	Motor Key	2	P75190	P75190
16	Coupler, Split	2	P2002866	P2002866
16	Capscrew	8	P75207	P75207
16	Hex Nut	8	P44190	P44190
16	Lockwasher	8	P44620	P44620

ITEM	DESCRIPTION	QTY	3X3X11	4X4X11
FLUSH PIPE ASSEMBLY				
21	Nipple	2	DL0025	DL0025
21	Straight Tee	2	P75181	P75181
21	Bushing, Hex 0.25MNPTx0.12FNPT - Steel	2	511849	511849
21	Hose	2	P2002543	P2002544
21	Valve, vent	2	P75255	P75255
21	Elbow, Street 0.25	2	AC0530	AC0530
21	Bushing, Hex 0.25MNPTx0.12FNPT	2	DF0003	DF0003

MOTOR FRAMES 284TC THROUGH 365TSC				
ITEM	DESCRIPTION	QTY	4X4X11	6X6X11
1	Volute	1	P2004890	P2004937
	Pipe Plug 1/4	6	P39040	P39040
2	Volute Gasket	2	P80765	P80765
3	Volute Capscrew	32	P13780	P13780
4	Impeller (State Diameter) 11" Full Diameter	2	P2001173	P2001146
5	Throttle Bushing (Bearing)	2	P71379	P71379
9	Impeller Bolt	2	P13800	P13800
10	Impeller Lockwasher	2	J23875	J23875
11	Impeller Washer	2	P51230	P51230
12	Impeller Key	2	P49372	P49372
13	Shaft	2	P2002872	P2002872
14	Coupler Key	2	P75183	P75183
15	Tapered Washer	2	P2002875	P2002875
15	Tapered Washer Capscrew	2	510830	510830
15	Tapered Washer Lockwasher	2	P16690	P16690
20	Guard	2	P71381	P71381
20	Guard Screw	8	P86085	P86085
22	Flapper assembly	1	P2005008	P2005006
23	Self sealing screw	2	P2004967	P2004967
INSIDE SEAL MECHANICAL SEAL				
6	Mechanical Seal Standard - EPR/Carbon/Ceramic/SS	2	P75222	P75222
6	Mechanical Seal Optional - EPR/SilCar/SilCar/SS	2	P2001704	P2001704
6	Mechanical Seal Optional - FMK (Viton®)/Carbon/Ceramic/SS	2	P75226	P75226
6	Mechanical Seal Optional - EPR/Carbon/TungCar/SS	2	P75224	P75224
6	Cap	2	P75216	P75216
6	Capscrew	8	H28100	H28100
6	Gasket	2	P75201	P75201
6	Snap Ring	2	P75219	P75219
6	Washer	8	P44580	P44580
OUTSIDE SEAL MECHANICAL SEAL				
7	Mechanical Seal Standard - EPR/Carbon/Ceramic/SS	2	P75203	P75203
7	Mechanical Seal Optional - FMK (Viton®)/Carbon/Ceramic/SS	2	P2001064	P2001064
7	Capscrew	8	H52100	H52100
7	Gland	2	P75205	P75205
7	Washer	8	P44580	P44580
MOTOR FRAMES 284TC-286TC				
8	Motor Bracket (Inside Seal)	2	N/A	P70939
8	Motor Bracket (Outside Seal)	2		P70940
17	Setscrew Collar	2		P71373
17	Set Screw	6		P71388
18	Motor Bracket Capscrew	8		DJ0132
19	Motor Key	2		P75192
16	Coupler, Split	2		P2002869
16	Capscrew	8		P44250
16	Hex Nut	8		P52380
16	Lockwasher	8	P16690	
FLUSH ASSEMBLY				
21	Nipple	2	DL0025	DL0028
21	Straight Tee	2	P75181	P75181
21	Bushing, Hex 0.25MNPTx0.12FNPT - Steel	2	511849	511849
21	Hose	2	P2002544	P2002544
21	Valve, vent	2	P75255	P75255
21	Elbow, Street 0.25	2	AC0530	AC0530
21	Bushing, Hex 0.25MNPTx0.12FNPT	2	DF0003	DF0003

# Xylem |'zīləm|

- 1) The tissue in plants that brings water upward from the roots;
- 2) a leading global water technology company.

We're a global team unified in a common purpose: creating advanced technology solutions to the world's water challenges. Developing new technologies that will improve the way water is used, conserved, and re-used in the future is central to our work. Our products and services move, treat, analyze, monitor and return water to the environment, in public utility, industrial, residential and commercial building services settings. Xylem also provides a leading portfolio of smart metering, network technologies and advanced analytics solutions for water, electric and gas utilities. In more than 150 countries, we have strong, long-standing relationships with customers who know us for our powerful combination of leading product brands and applications expertise with a strong focus on developing comprehensive, sustainable solutions.

**For more information on how Xylem can help you, go to [www.xylem.com](http://www.xylem.com)**

We value your feedback. Please take our 3 question survey at **[bellgossett.com/survey](http://bellgossett.com/survey)** to let us know how we are doing.



Xylem Inc.  
8200 N. Austin Avenue  
Morton Grove, Illinois 60053  
Phone: (847) 966-3700  
Fax: (847) 965-8379  
[www.xylem.com/bellgossett](http://www.xylem.com/bellgossett)

Bell & Gossett is a trademark of Xylem Inc. or one of its subsidiaries.  
© 2020 Xylem Inc. CP-20e825C-101-PL September 2020