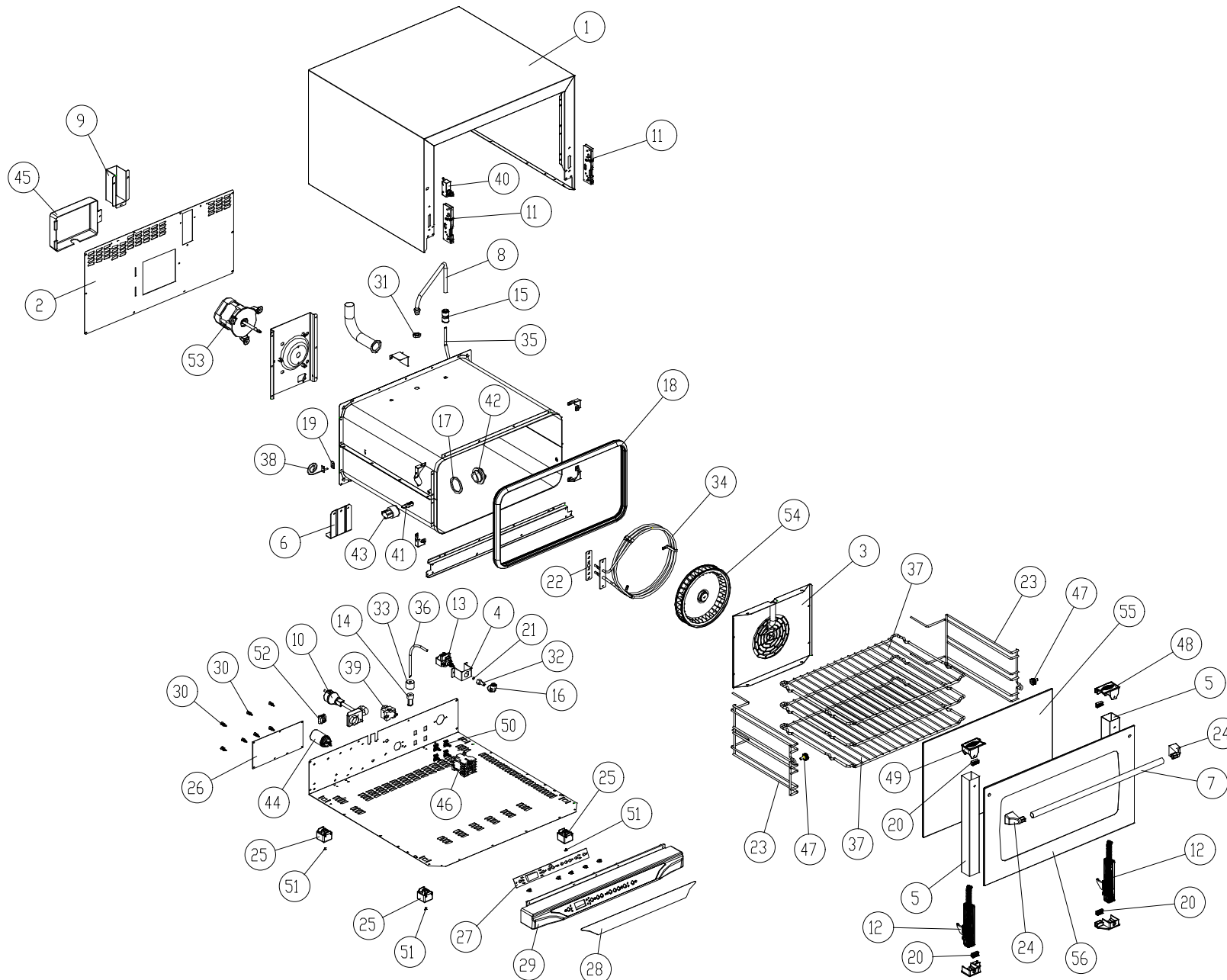


MOD: XAF115

EXPLODED VIEW DISEGNO ESPLOSO



LEGEND - LEGENDA

1	OD1270A3	56	VT1056A2
2	OF1080A1		
3	OG1105A2		
4	OH113		
5	OH1420B0		
6	OH1455A0		
7	OH1925A0		
8	OH1990A1		
9	VM1065A0		
10	CE124		
11	CR1000A0		
12	CR1010A0		
13	EL070		
14	EL071		
15	EL1055A0		
16	EL1185A0		
17	GN1065A1		
18	GN1110A2		
19	GN1120A0		
20	GN1130A0		
21	GN207		
22	GN224		
23	GRL1005A1		
24	MG1015A0		
25	PD1001A0		
26	PE1175B0		
27	PE1195C1		
28	PE1250A1		
29	PE1310A0		
30	PE1345A1		
31	RC1170A1		
32	RC1180A2		
33	RC493		
34	RS1130A0		
35	TB008		
36	TB009		
37	GRP305		
38	TR1015A0		
39	TR255B		
40	VE086B		
41	VE1005A1		
42	VE1010A1		
43	VE1015A1		
44	VE1102A0		
45	VE1102A0		
46	VE1115A0		
47	VI1035A1		
48	VM1045B0		
49	VM1046B0		
50	VM1075A1		
51	VM1095A0		
52	VM250		
53	VN1035A1		
54	VN1050A2		
55	VT1055A0		

MOD: XAF115

EXPLODED VIEW DISEGNO ESPLOSO



DESCRIZIONE CODICI

1	0D1270A3	MANTELLO INOX L.M. STEFANIA
2	0F1080A1	SCHIENA ZINCATA L.M. STEFANIA
3	0G1105A2	CARTER ARIA INOX L.M. STEFANIA
4	0H113	SUPPORTO POMPA EL070
5	0H1420B0	COLONNINA SX/DX PORTA L.M. CRISTINA-STEFANIA-ELENA
6	0H1455A0	STAFFA SOSTEGNO MUFFOLA L.M.
7	0H1925A0	TUBO MANIGLIA D-est=18 Sp=1 L=518 INOX L.M. 600
8	0H1990A1	TUBO ESTERNO UMIDITA + RACCORDO INOX SALDATO L.M.
9	VM1065A0	CUFFIA COPRI CAMINO FUMI L.M.
10	CE124	CAVO SJTOW AWG14x3 SPINA NEMA6-15P 220V UL code. E-186
11	CR1000A0	ATTACCO CERNIERA PORTA FORNO RIBALTA L.M.
12	CR1010A0	CERNIERA PORTA FORNO RIBALTA L.M. STEFANIA
13	EL070	POMPA NMEIC+ATT SUP POMPA M10 09.02.060/B
14	EL071	FILTRO 009A D=7,75mm
15	EL1055A0	RIDUZIONE J.G. DA D=10 A D=8 PM201008E
16	EL1185A0	RACCORDO A GOMITO J.GUEST Ø8 - Ø8
17	GN1065A1	GUARNIZIONE PORTALAMPADA DE=53.2 DI=44.2 SP=3.2 PTFE P
18	GN1110A2	GUARNIZIONE PORTA PROFILO 248 LINEMISS-XCH030
19	GN1120A0	GUARNIZIONE SONDA DI TEMPERATURA NTC
20	GN1130A0	GUARNIZIONE SUPPORTO VETRO L.M. L=23mm
21	GN207	O-RING GOMMA NBR70/75SH R=4
22	GN224	GUARN.PTFE+CARB 100x22x0,8sp-c/fori 1999
23	GRL1005A1	GRIGLIA LATERALE DX/SX CROMATA 3TG 460X330 L.M. STEFANI
24	MG1015A0	TERMINALE MANIGLIA L.M.
25	PD1001A0	PIEDINO 35X35 H26 PLASTICA+GOMMA GRIGIO
26	PE1175B0	SCHEDA POTENZA L.M. DYNAMIC 230V
27	PE1195C1	SCHEDA CONTROLLO L.M. DYNAMIC SERIE 1 F.W. 2.05
28	PE1250A1	MASCHERINA SERIGRAFATA PE 180° L.M. 600 DYNAMIC
29	PE1310A0	CRUSCOTTO COMANDI IN PLASTICA L.M. 600
30	PE1345A1	DISTANZIALE NYLON INCASTRO MASCHIO-INCASTRO MASCHIO
31	RC1170A1	DADO M14 H=8 CH=22 INOX
32	RC1180A2	RIDUZIONE M10X1 FEMM-Ø8 INOX
33	RC493	AFFONDANTE FILTRO POMPA UMIDIF.
34	RS1130A0	RESISTENZA CIRCOLARE D=230 3 SPIRE H46 2900W 230V
35	TB008	TUBO PE 7,93x4,75 TRASPARENTE
36	TB009	TUBO POLIPROPILENE TRASP. 6x4mm
37	GRP305	GRIGLIA 470x330 PIANA CROMATA
38	TR1015A0	SONDA DI TEMP. NTC UL
39	TR255B	TERMOSTATO SIC.+UNIPOL.330°C Ty95H L=1300mm
40	VE086B	MICROINTERRUTTORE PORTA MF09 16A
41	VE1005A1	LAMPADA ALOGENA 40W 230V
42	VE1010A1	VETRO COPRILAMPADA TEMPERATO ANTISHOCK
43	VE1015A1	PORTA LAMPADA SERIE 2 PER LAMPADA ALOGENA
45	VE1102A0	CUFFIA COPRI MOTORE IN PLASTICA L.M. CRI-STE-ARI
46	VE1115A0	MINICONTATTORE QUADRIPOLORE 20 A 230 V
47	VI1035A1	NOTTOLINO M6x12,5 CON TAGLIO OTT.CROM.FERMA GRIGUE X
48	VM1045B0	TAPPO SUP. DX COLONNINA PORTA VETRO INTERNO L.M.
49	VM1046B0	TAPPO SUP. SX COLONNINA PORTA VETRO INTERNO L.M.
50	VM1075A1	CLIP DI FISSAGGIO PER TELERUTTORI
51	VM1095A0	TAPPO IN GOMMA NERO D=3.5 H=6.5
52	VM250	MORSETT A PETTINE
53	VN1035A1	MOTORE SISME 230 VAC LINE MISS
54	VN1050A2	VENTOLA D=196 H=32 38 PALE INOX DADO M6
55	VT1055A0	VETRO INTERNO 515X334X4 BETFL L.M. STEFANIA

56 VT1056A2 VETRO ESTERNO SER. GIALLO 598X344X5 TFL L.M. STEFANIA

DESCRIPTION

1	0D1270A3	
2	0F1080A1	ZINCED BACK PANEL L.M. STEFANIA
3	0G1105A2	STAINLESS STEEL FAN GUARD PANEL L.M. STEFANIA
4	0H113	PUMP EL070 SUPPORT
5	0H1420B0	
6	0H1455A0	L.M. MUFFLE SUPPORT
7	0H1925A0	STAINLESS STEEL TUBE HANDLES D-est=18 Sp=1 L=518 L.M. STEF-
8	0H1990A1	EXTERNAL WATER PIPE + STAINLESS STEEL WELDED CONNECTION
9	VM1065A0	PLASTIC COVER FOR FUMES CHIMNEY L.M.
10	CE124	AWG 14x3 CABLE+PLUG 6-20A 220V+CE202
11	CR1000A0	HINGE LATCH L.M.
12	CR1010A0	HINGE DOOR L.M. STEFANIA
13	EL070	PUMP NMEIC+ATT SUP PUMP M10 09.02.060/B
14	EL071	FILTER 009A D=7,75mm
15	EL1055A0	J.G. REDUCTION FROM D=10 TO D=8 PM201008E
16	EL1185A0	ELBOW CONNECTION J. GUEST Ø8 - Ø8
17	GN1065A1	SEAL FOR LAMP GLASS COVER (PURE PTFE) DE=53.2 DI=44.2 TH=
18	GN1110A2	DOOR GASKET PROFILE 248 LINE MISS-XCH030
19	GN1120A0	TEMPERATURE PROBE NTC SEAL
20	GN1130A0	INT. GLASS SEAL L.M. L=23mm
21	GN207	RUBBER O-RING NBR70/75SH R=4
22	GN224	PTFE+CARB 100x22x0,8sp-w/holes 1999 GASKET
23	GRL1005A1	RIGHT/LEFT LATERAL GRID CHROM.PLATED TRAYS 460x330 L.M.
24	MG1015A0	HANDLE END L.M.
25	PD1001A0	FOOT 35X35 H26 GREY PLASTIC+RUBBER
26	PE1175B0	POWER CARD L.M. DYNAMIC 230V
27	PE1195C1	CONTROL CARD L.M. DYNAMIC SERIE 1 F.W. 2.05
28	PE1250A1	STICKER WITH SERIGRAPHY PE 180° L.M. 600 DYNAMIC
29	PE1310A0	PLASTIC CONTROL PANEL L.M. 600
30	PE1345A1	NYLON SPACER MALE-MALE H=14
31	RC1170A1	STAINLESS STEEL NUT M14 H=8 CH=22
32	RC1180A2	STAINLESS STEEL M10x1 FEMALE REDUCTION Ø8
33	RC493	BALLAST FOR FILTER FOR WATER PUMP
34	RS1130A0	CIRC.HEAT.ELEMENT D=230 3 TURNS H46 2900W 230V
35	TB008	TRANSPARENT TUBE PE 7,93x4,75
36	TB009	CLEAR POLYPROPYLENE PIPE 6x4mm
37	GRP305	WIRE GRID 470x330 FLAT CHROMIUM PLATED
38	TR1015A0	TEMPERATURE PROBE NTC UL
39	TR255B	SAFETY THERMOSTAT+UNIPOL. 330°C Ty95H L=1300mm
40	VE086B	DOOR MICROSWITCH MF09 16A
41	VE1005A1	HALOGEN LAMP 40W
42	VE1010A1	
43	VE1015A1	LAMP HOLDER SERIE 2 FOR HALOGEN LAMP
45	VE1102A0	PLASTIC COVER FOR MOTOR L.M. CRI-STE-ARI
46	VE1115A0	MINICONTACTOR WITH 4 POLES 20 A 230 V
47	VI1035A1	CHROMIUM PLATED BRASS NUT M6x12,5 TO STOP LATERAL SUP
48	VM1045B0	RIGHT UPPER LID FOR COLUMN FOR INTERNAL GLASS L.M.
49	VM1046B0	LEFT UPPER LID FOR COLUMN FOR INTERNAL GLASS L.M.
50	VM1075A1	PLASTIC CLIP TO FIX CONTACTORS
51	VM1095A0	BLACK RUBBER LID D=3.5 H=6.5
52	VM250	"COMB" TERMINAL BOARD
53	VN1035A1	
54	VN1050A2	FAN D=196 H=32 38 STAINLESS STEEL BLADES NUT M6
55	VT1055A0	INNER GLASS 515x334x4 BETFL L.M. STEFANIA

56 VT1056A2