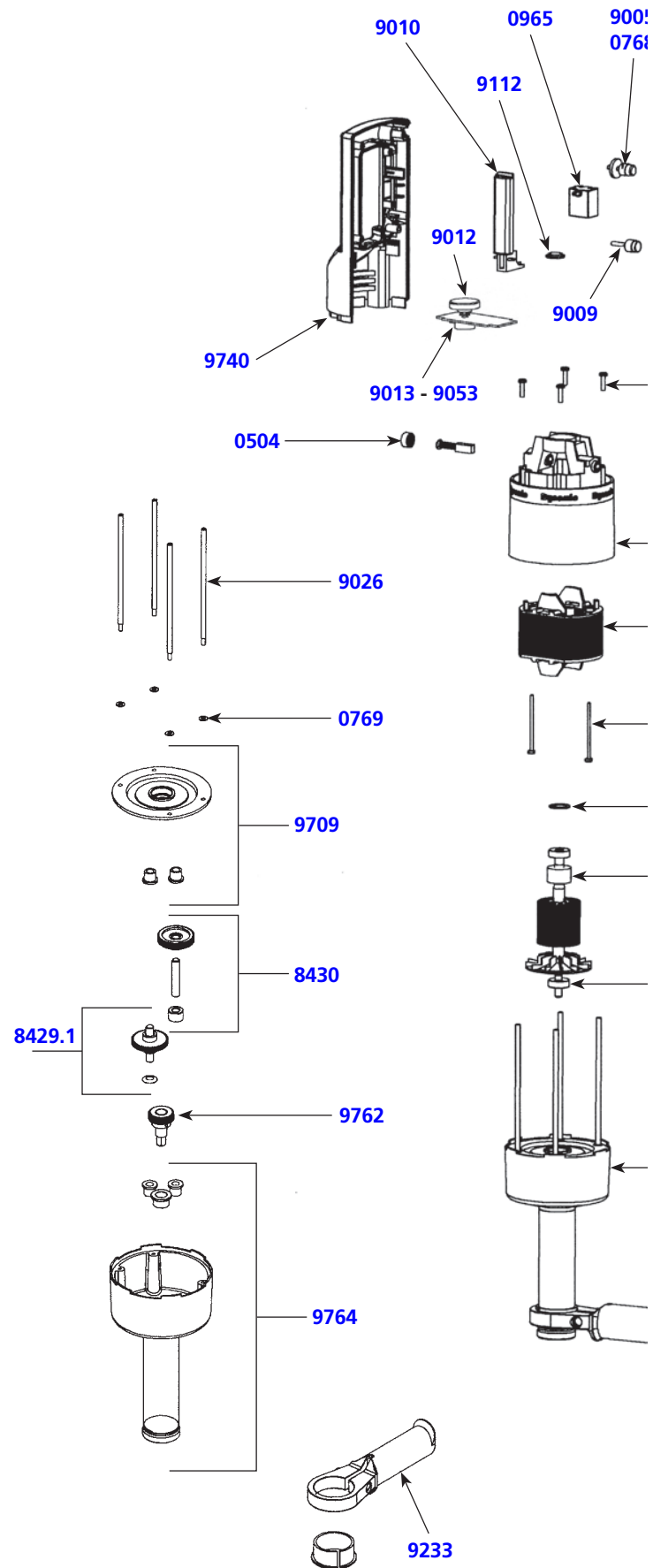


MOTOR BLOCK PP 97 PLUS

Parts list	Code	List \$ Price
Motor brushes	0504	19.61
Ball bearing	0601	19.61
Rubber washer	0726	2.75
Safety button return spring	0768	5.42
Strain relief 230 V	0950	3.44
Strain relief 115 V	0950.1	3.44
Switch	0965	52.09
Capacitor (115 V)	0972	19.41
Capacitor + filter	0972.1	22.58
Dynamic label	1027	17.11
Identification plate 230 V	109913	7.39
Identification plate 115 V	109914	7.39
Rotor 230 V	7908.31	312.65
Rotor 115 V	7908.32	312.65
Fan	7933	12.50
Spacer screws	8317	6.37
Upper half handle	9002	76.75
Security cap	9005	4.17
Handle cap	9009	4.17
Control lever	9010	18.01
Variable speed knob	9012	5.57
Variable speed control board 230 V	9013	131.99
Handle screw	9014	0.91
Top housing	9015	103.93
Stator 230 V	9016	277.90
Stator screws 230 V (2)	9023	5.18
Stator 115 V	9038	277.90
Power cord 115 V	9040	38.09
Carbon brush wires (230 V)	9043	13.08
Variable speed control board 115 V	9053	131.99
Variator cap	9112	2.81
Carbon brush wires 115 V (2)	9143	13.08
Lower half handle 230 V (with label)	9730	78.69
Lower half handle 115 V (with label)	9740	78.69
Lower motor housing	9761	691.47
Complete handle w/power cord 230 V	9765	222.34
Complete handle w/power cord 115 V	9765.1	222.34



Equipped lower carter PP97 plus

Parts list	Code	List \$ Price
M4 Washer	0769	2.06
Double gear with washer	8429.1	165.85
Middle gear axle	8430	173.64
Spacer rods	9026	22.12
Handle support	9233	111.47
Plate w/ 2 seals	9709	43.85
Exit shaft w/gear	9762	169.25
Aluminium carter. foot and seals	9764	226.93