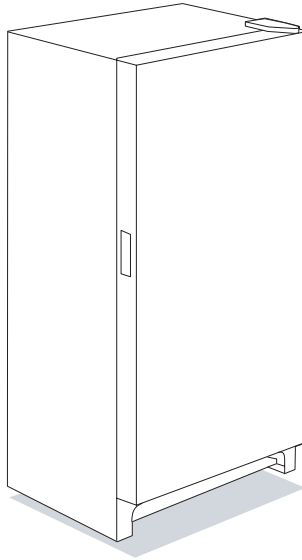


FACTORY PARTS CATALOG FREEZER

UNIVERSAL/MULTIFLEX



PRODUCT NO.	BASE MODEL NO.	SERIES	COLOR	VOLTS
CFU14F3HW1	CFU14F3H	134A	white	115
MARKET				
North America				

WIRING DIAGRAM - # 216583900
OWNER'S GUIDE - # 216602400
SERVICE DATA SHEET - #216583900

 **FRIGIDAIRE**
HOME PRODUCTS

101 Masters Blvd.
Anderson, SC 29624

Publication No.

5995329033

991019

-EN/SERVICE /ECL
365

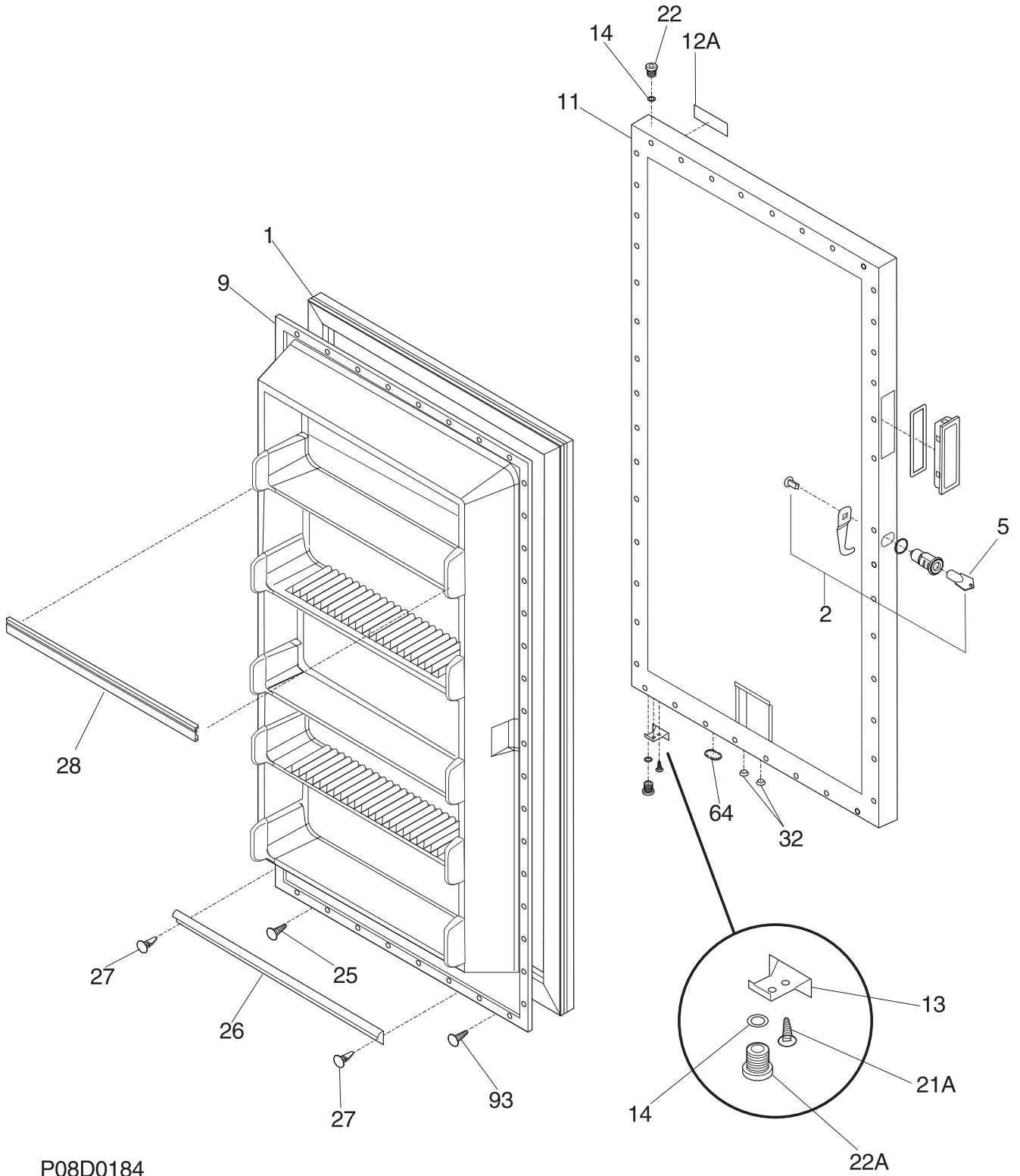
FREEZER

Model No.

CFU14F3H

©1999 White Consolidated Industries, Inc.
All rights reserved

DOOR

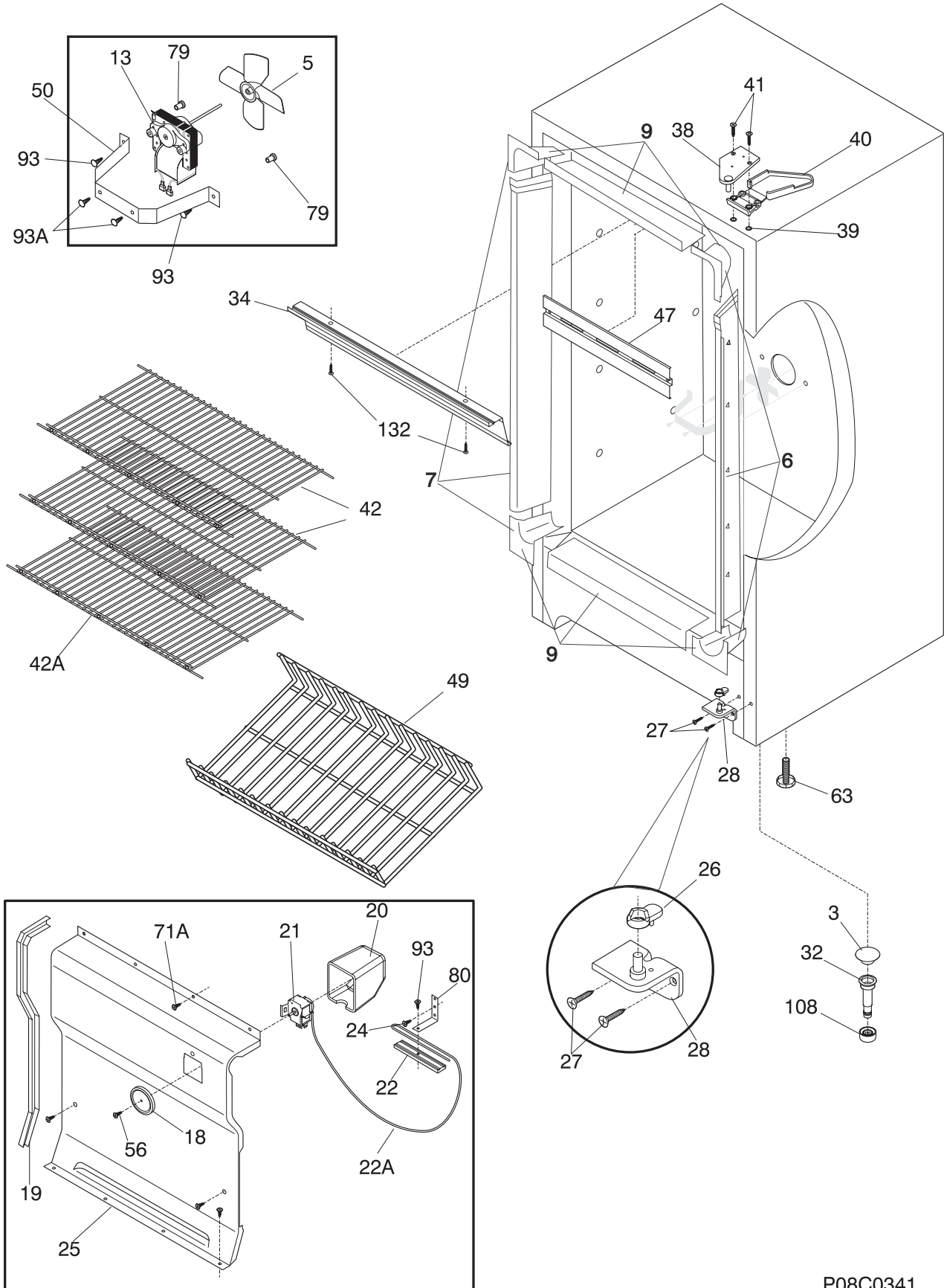


P08D0184

DOOR

POS. NO	PART NO	DESCRIPTION
1	216522306	Gasket-door,white
2 #	5303925107	Lock Assy
5 #	216388700	Key,lock
9	216527605	Panel-inner door,white ,frzr
11	216557805	Panel-outer door,complete ,w/foam insul
12A	216373000	Frame-nameplate
13	08016354	Door Stop
14	5303313518	Washer,sealing
21A	08005520	Screw-door stop mtg,flat hd metric ,4.0 x 0.7-19.7
22	216443600	Bearing
22A	216503200	Bearing-hinge,btm
25	216022800	Screw,washer head ,8-18 X 1/2
26	216524300	Gasket,secondary
27	5303212828	Clip,panel
28	216523302	Rack-shelf
32	5309950074	Valve-breather
64	216403700	Plug-button,base door
93	5303161215	Screw
*	5303925098	Insulation

CABINET

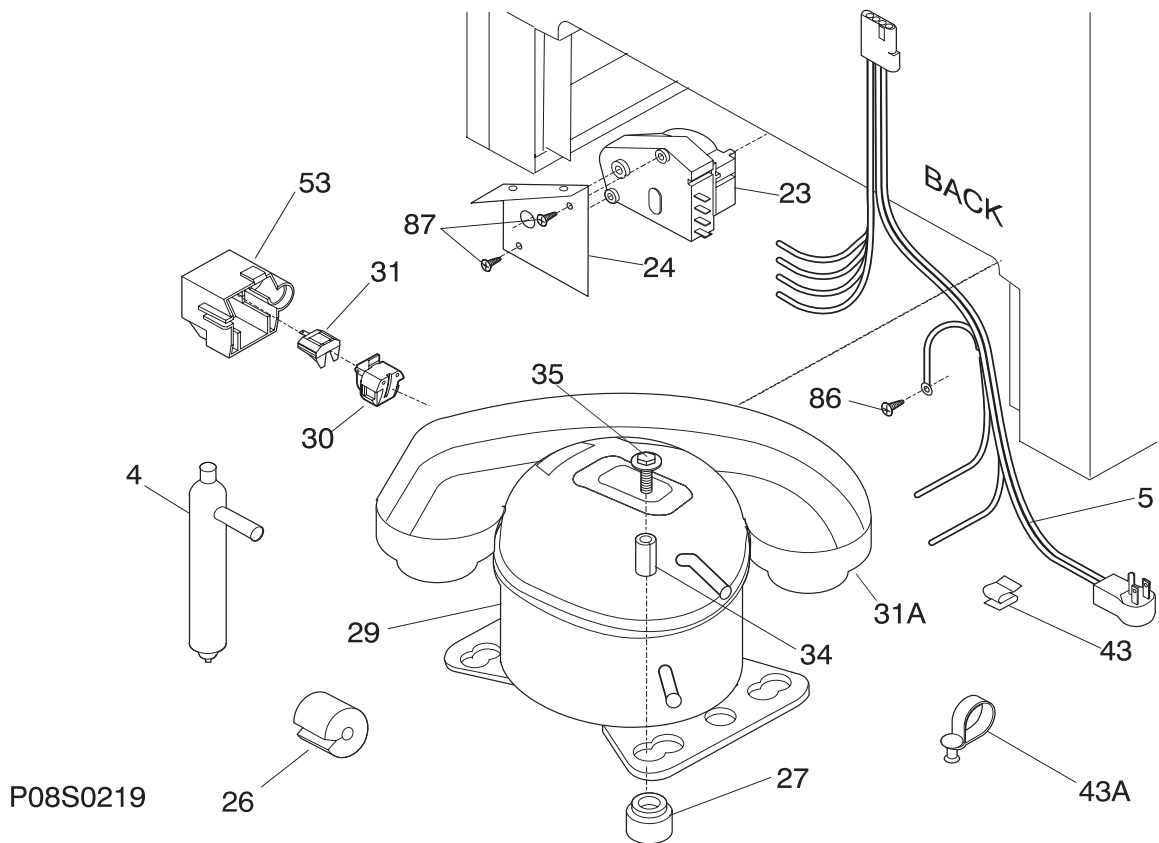
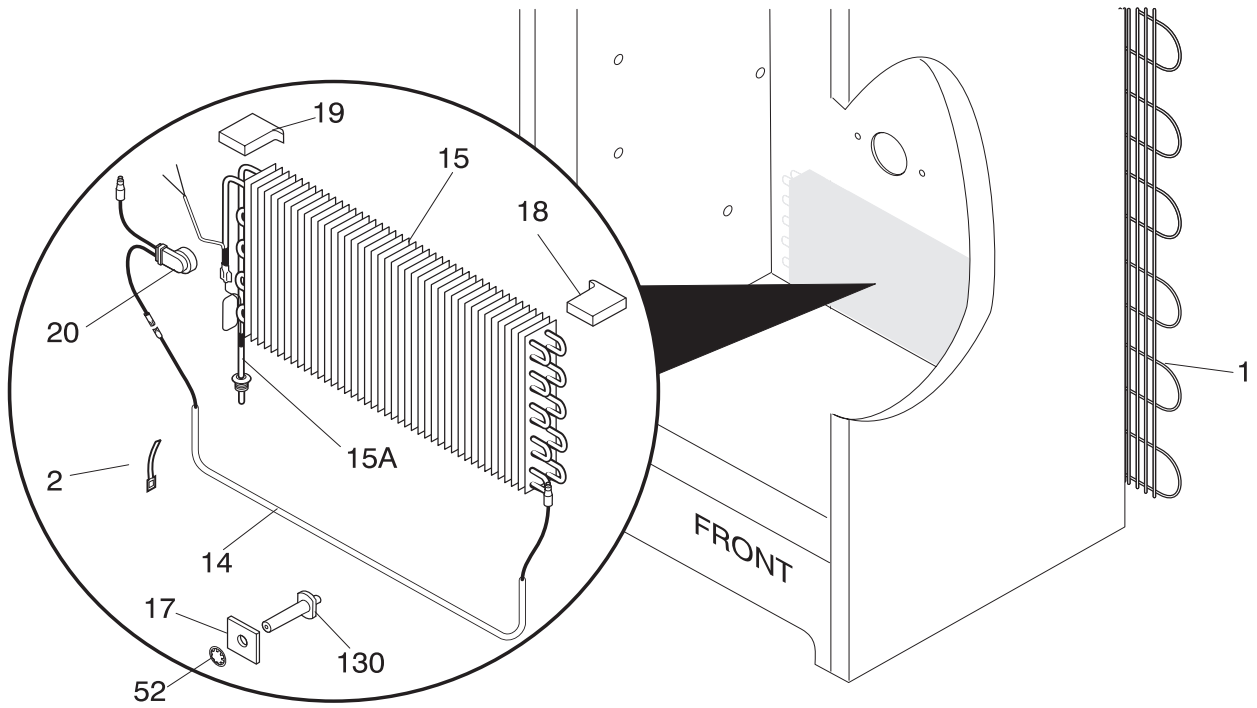


P08C0341

CABINET

POS. NO	PART NO	DESCRIPTION
3	216503100	Screen-drain
5 #	216325600	Fan Blade
6	216604300	Breaker Kit w/corners
7	216603800	Breaker Kit w/corners,lock catch
9	216603400	Breaker Kit w/corners,28" ,top or bottom
13	216690400	Motor-fan
18	216591700	Knob-control
19	216511300	Gasket-evap cover
20	216230300	Cover,temp control
21	216303500	Control-temperature
22	05878562	Clamp,cap tube ,cold control
22A	5303916855	Tube,plastic ,clear ,sensor sleeve
24	5300052943	Screw-clamp,truss hd cr ,control
25	216137400	Cover-evaporator
26	216503300	Ramp,closer ,door
27	5303205738	Screw-hinge,cr ,1/4-20 x 1.000 ,btm
28	216247400	Hinge-bottom
32	5308005500	Drain
34	216557500	Shield-light
38	5303925086	Hinge-upper
39	5303294372	Nut-insert,hinge
40	5303212912	Cover-hinge
41	5303212937	Screw-top hinge
42	216546100	Shelf,16.69 X 23.88 WH,16.69x23.88 ,white
42A	216546200	Shelf,14.50 X 23.88 WH,14.50x23.88 ,white
47	216661600	Baffle-plate
49	216278800	Trivet
50	216394000	Bracket-motor mtg fan
56	09950853	Screw-control knob,phillips ,4-40 x 3/8
63	216396900	Foot-adjustable
71A	216347500	Screw,quadrex
79	3017666	Nut-insert
80	06594601	Bracket,control
93	5303161215	Screw
93A	5303302760	Screw
108	216388600	Trap-drain
132	5303283898	Screw,6-20AB x 3/8
*	09948773	Insulation,drain tube
*	5303305324	Paint,touch-up ,white
*	5303311565	Clip-cable

SYSTEM



P08S0219

SYSTEM

POS. NO	PART NO	DESCRIPTION
1 #	5300123788	Condenser
2	5308000110	Strap-evap/heater,aluminum ,(2)
4	216634500	Drier-filter
5 #	216560500	Harness-electrical
14 #	216608400	Heater-defrost
15 #	216247200	Evaporator
15A	216565700	Heat Exchanger
17	06599546	Spacer-support,evaporator ,(2)
18	06599531	Insulation Block,RH
19	3017674	Insulation Block,LH
20	5304404743	Thermostat-defrost
23 #	216517400	Timer
24	08016580	Bracket
26	216511900	Spacer tube,(3)
27	216498900	Grommet,compressor
29	216557000	Compressor
30	216596700	Starter,factory instal
31	216100116	Overload Protector,factory instal
31A	216601800	Pan-drain,production compr
34	5306594529	Sleeve-compressor
35	5303272328	Screw,Ind hex sems ,1/4-28 unfx ,compressor
43	09950610	Clip,cord
43A	216629700	Clip-harness
52	08013198	Retainer,spacer evap
53	216347800	Cover,compressor
86	216036600	Screw,rwhd (gx-ca) ,8-32 x 1/2
87	08037849	Screw
130	06599544	Support-evaporator

WIRING DIAGRAM

ELECTRICAL CIRCUIT

