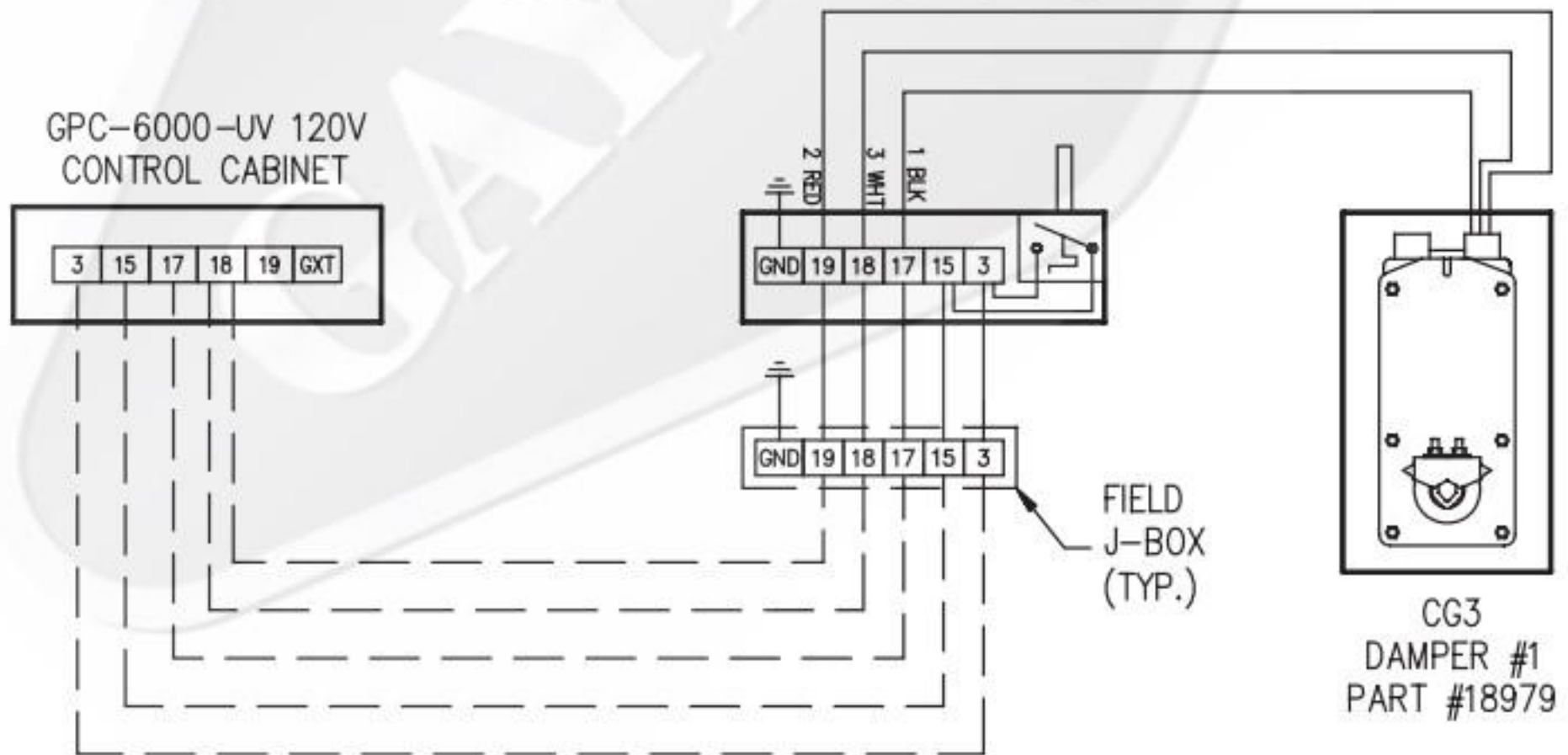
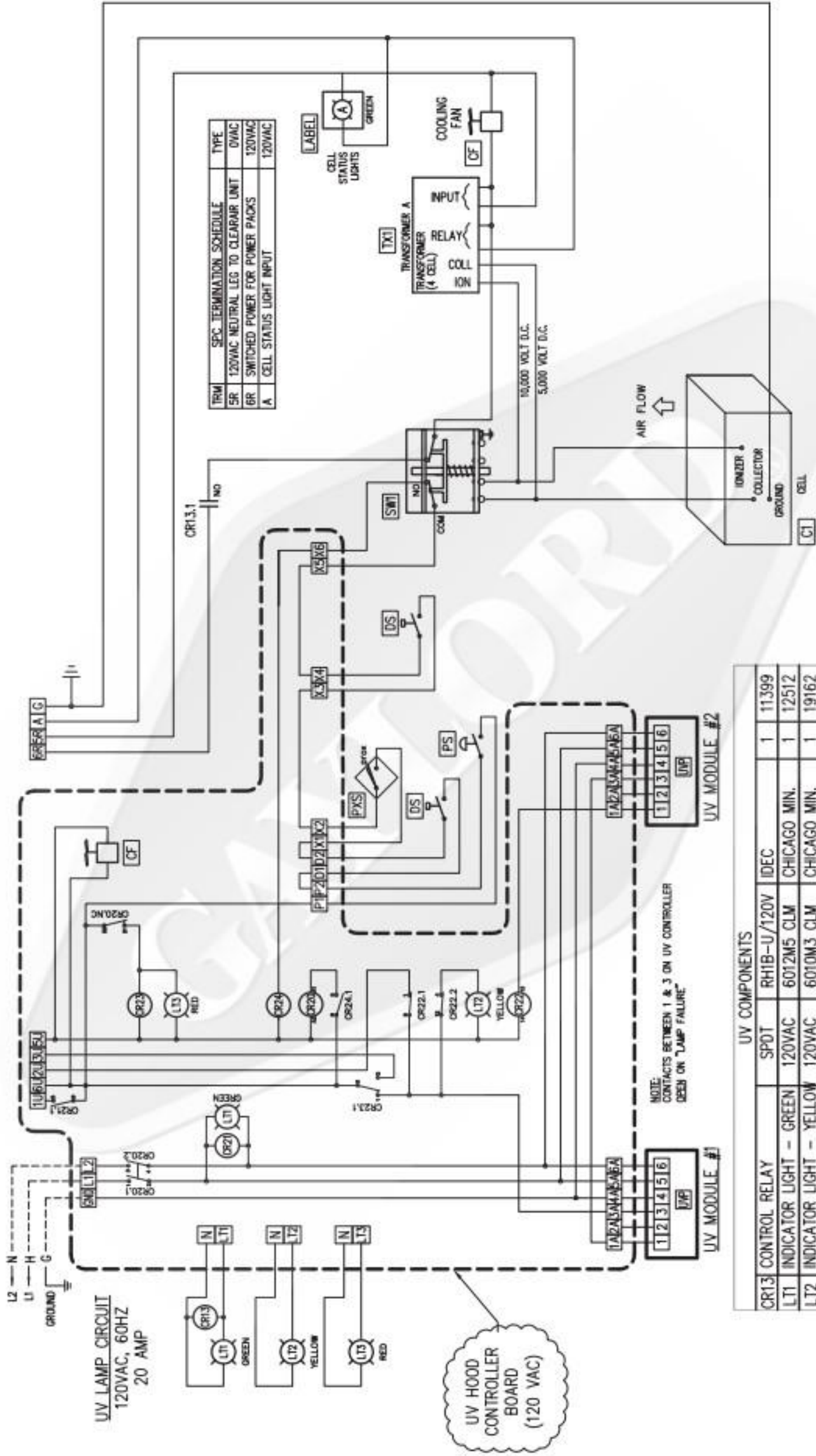


CG3-UV-FDL WIRING NOTES



CG3-UV-FDL WIRING NOTES w/C-6000-UV

1. ADD FIRE DAMPER LOCKOUT BRACKET, "FDL" BRACKET, TO DAMPER ON VENTILATOR
2. WIRE #'S 18 & 19 FROM ENTILATOR CONNECT TO #18 IN THE GPC-6000-UV CONTROL CABINET.



TRM	SPC TERMINATION SCHEDULE	TYPE
5R	120VAC NEUTRAL LEG TO CLEARAIR UNIT	OVAC
6R	SWITCHED POWER FOR POWER PACKS	120VAC
A	CELL STATUS LIGHT INPUT	120VAC

UV COMPONENTS

CR13	CONTROL RELAY	SPOT	RH1B-U/120V	IDEC	1	11399
LT1	INDICATOR LIGHT - GREEN	120VAC	6012M5 CLM	CHICAGO MIN.	1	12512
LT2	INDICATOR LIGHT - YELLOW	120VAC	6010M3 CLM	CHICAGO MIN.	1	19162
LT3	INDICATOR LIGHT - RED	120VAC	6010M1 CLM	CHICAGO MIN.	1	12510

UV HOOD CONTROLLER BOARD (120 VAC)

NOTE: CONTACTS BETWEEN 1 & 3 ON UV CONTROLLER OPEN ON "LAMP FAILURE"

GPC INTERNAL ELECTRICAL COMPONENTS

TAG	DESCRIPTION	SIZE	PART#	MANUFACTURER	QTY	OPN
DR1-8	CONTROL RELAY	SEE OUTPUT MODULE B.O.M.				
DA1	DAMPER ACTUATOR	24V	AF24-MT.9 S-0001	BELIMO	X	18879
DCP	24VDC POWER SUPPLY	25W	PS-25-24	ASTRODYNE	X	18965
F1	FUSE - 24VDC PWR SUPPLY	2A	AGC-2	BUSSMANN	1	13062
F2	FUSE - PLC - 120V	4A	AGC-4	BUSSMANN	1	10039
F3	FUSE - SUPPLY FAN	1A	MDL-1	BUSSMANN	1	19027
F4	FUSE - EXHAUST FAN	1A	MDL-1	BUSSMANN	1	19027
F5	FUSE - TX1 - PRIMARY	2A	AGC-2	BUSSMANN	1	13062
F6	FUSE - TX1 - SECONDARY	6A	AGC-6	BUSSMANN	1	19020
F7	FUSE - ESP OUTPUTS					
TX1	TRANSFORMER	100VA	9070T100023	SQUARE D	1	18861
PLC	AROMAT PLC	24 I/O	FPG-C24R2	AROMAT	1	19129
PM	AROMAT EXP. MODULE	8 I/O	FP0-E8YRS	AROMAT	1-2	18867
OT	OPERATOR INTERFACE	N/A	ATM-10N	AROMAT	1	18866
OUT	OUTPUT MODULE	N/A	IC3.02-102	ASI	1	18983

ESP COMPONENTS

CR9	CONTROL RELAY	SPDT	9H1B1-AC120V	DEC	3	11399
SL12	SOCKET	SPDT	SH1B-05	DEC	3	11413
DR10	CONTROL RELAY	SPDT	9H1B1-AC120V	DEC	1	11399
SPDT	SOCKET	SPDT	SH1B-05	DEC	1	11413
DR10	CONTACTOR	DPDT	CA2-DN2206	TELEMECANIQUE	1	16633

100VAC SUPPLY VOLTAGE
50-60HZ, 600 WATTS MAXIMUM
30 AMPS MAXIMUM

- GENERAL NOTES
- ALL EXTERNAL CONTROL WIRING SHALL BE 12 GAUGE NUMBER 18 AWG FOR APPLICABLE CODES.
 - THE WIRING SHALL BE IN ACCORDANCE WITH THE NATIONAL ELECTRICAL CODE (NEC) AND THE NATIONAL FIRE ALARM CODE (NFPA).
 - ALL WIRING SHALL BE IN ACCORDANCE WITH THE NATIONAL ELECTRICAL CODE (NEC) AND THE NATIONAL FIRE ALARM CODE (NFPA).
 - THE WIRING SHALL BE IN ACCORDANCE WITH THE NATIONAL ELECTRICAL CODE (NEC) AND THE NATIONAL FIRE ALARM CODE (NFPA).
 - THE WIRING SHALL BE IN ACCORDANCE WITH THE NATIONAL ELECTRICAL CODE (NEC) AND THE NATIONAL FIRE ALARM CODE (NFPA).
 - THE WIRING SHALL BE IN ACCORDANCE WITH THE NATIONAL ELECTRICAL CODE (NEC) AND THE NATIONAL FIRE ALARM CODE (NFPA).
 - THE WIRING SHALL BE IN ACCORDANCE WITH THE NATIONAL ELECTRICAL CODE (NEC) AND THE NATIONAL FIRE ALARM CODE (NFPA).
 - THE WIRING SHALL BE IN ACCORDANCE WITH THE NATIONAL ELECTRICAL CODE (NEC) AND THE NATIONAL FIRE ALARM CODE (NFPA).
 - THE WIRING SHALL BE IN ACCORDANCE WITH THE NATIONAL ELECTRICAL CODE (NEC) AND THE NATIONAL FIRE ALARM CODE (NFPA).
 - THE WIRING SHALL BE IN ACCORDANCE WITH THE NATIONAL ELECTRICAL CODE (NEC) AND THE NATIONAL FIRE ALARM CODE (NFPA).
 - THE WIRING SHALL BE IN ACCORDANCE WITH THE NATIONAL ELECTRICAL CODE (NEC) AND THE NATIONAL FIRE ALARM CODE (NFPA).
 - THE WIRING SHALL BE IN ACCORDANCE WITH THE NATIONAL ELECTRICAL CODE (NEC) AND THE NATIONAL FIRE ALARM CODE (NFPA).
 - THE WIRING SHALL BE IN ACCORDANCE WITH THE NATIONAL ELECTRICAL CODE (NEC) AND THE NATIONAL FIRE ALARM CODE (NFPA).
 - THE WIRING SHALL BE IN ACCORDANCE WITH THE NATIONAL ELECTRICAL CODE (NEC) AND THE NATIONAL FIRE ALARM CODE (NFPA).
 - THE WIRING SHALL BE IN ACCORDANCE WITH THE NATIONAL ELECTRICAL CODE (NEC) AND THE NATIONAL FIRE ALARM CODE (NFPA).

GENERAL NOTES

- 240 PFM (PLC EXPANSION MODULE) NOT REQUIRED FOR AN "S10" OR "H00". PFM IS REQUIRED FOR AN "S10" OR "H00".
- 100VA TRANSFORMER GOOD FOR UP TO 10 DAMPERS.

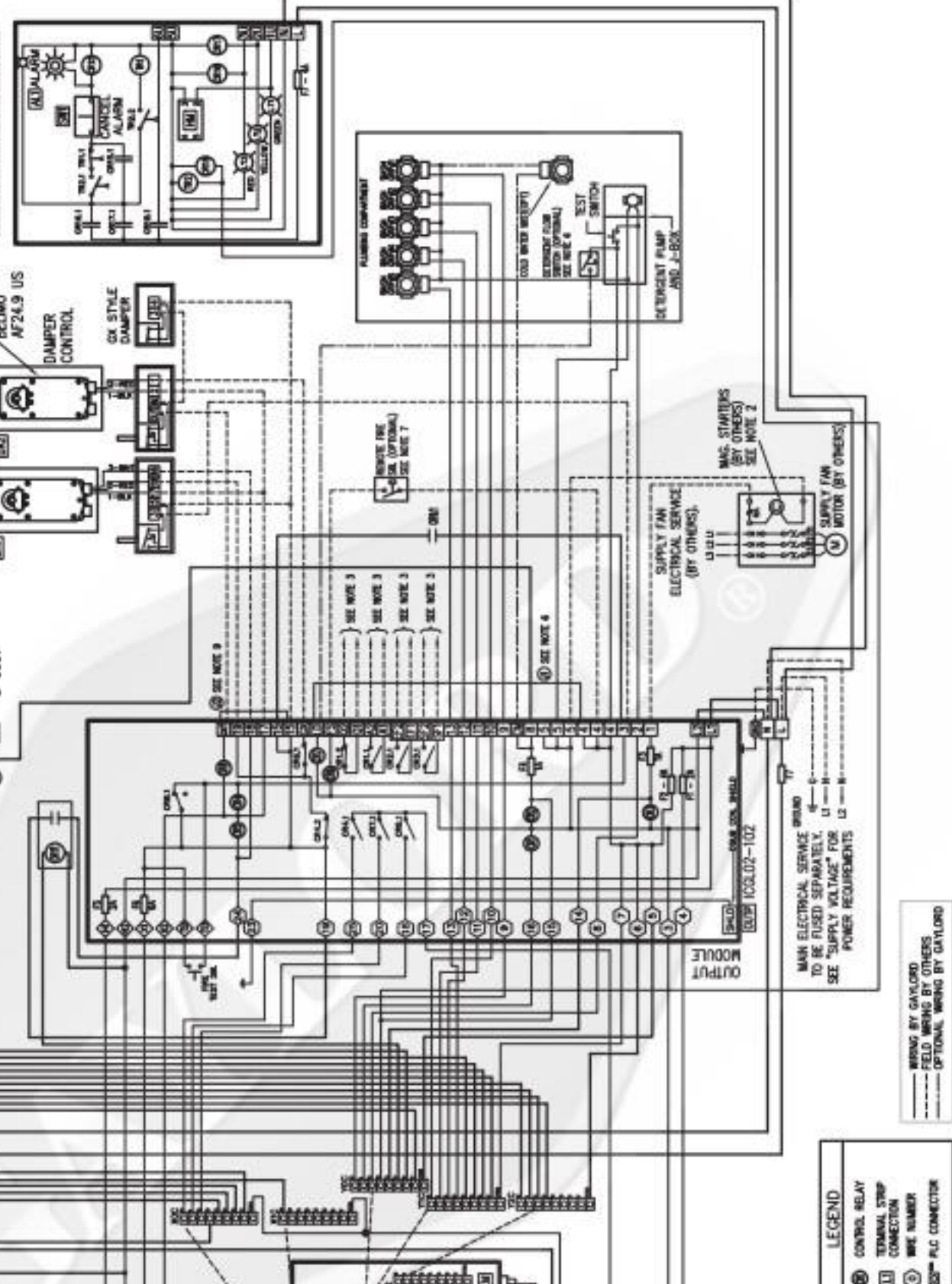
UV COMPONENTS

ALL	SOHALLERT	120VAC	5C250	MALLORY	1	19319
DR15	CONTROL RELAY	SPDT	9H1B-U/120V	DEC	4	11399
-18	SOCKET	SPDT	SH1B-05	DEC	4	11413
SW1	CANCEL SWITCH			GAYLORD	1	19076
LT1	INDICATOR LIGHT - GREEN	120VAC	607MS QLM	CHICAGO MNL.	1	12512
LT2	INDICATOR LIGHT - YELLOW	120VAC	607MS QLM	CHICAGO MNL.	1	19162
LT3	INDICATOR LIGHT - RED	120VAC	607MS QLM	CHICAGO MNL.	1	12510
F8	FUSE - UV OUTPUTS	4A	AGC-4	BUSSMANN	1	10039
TR1	TIMING RELAY-ON DELAY	DPDT	QT3M-3AF20	DEC	2	19273
TR2	SOCKET	8-PIN	SP2P-06	DEC	2	19272
HM	HOUR METER	120V	57058601XX	ATC	1	19164

PLC I/O SCHEDULE

PLC I/O	DESCRIPTION	PLC I/O	DESCRIPTION
DI 1	120VAC STOP	DO 1	120VAC STOP
DI 2	120VAC STOP	DO 2	120VAC STOP
DI 3	120VAC STOP	DO 3	120VAC STOP
DI 4	120VAC STOP	DO 4	120VAC STOP
DI 5	120VAC STOP	DO 5	120VAC STOP
DI 6	120VAC STOP	DO 6	120VAC STOP
DI 7	120VAC STOP	DO 7	120VAC STOP
DI 8	120VAC STOP	DO 8	120VAC STOP
DI 9	120VAC STOP	DO 9	120VAC STOP
DI 10	120VAC STOP	DO 10	120VAC STOP
DI 11	120VAC STOP	DO 11	120VAC STOP
DI 12	120VAC STOP	DO 12	120VAC STOP
DI 13	120VAC STOP	DO 13	120VAC STOP
DI 14	120VAC STOP	DO 14	120VAC STOP
DI 15	120VAC STOP	DO 15	120VAC STOP
DI 16	120VAC STOP	DO 16	120VAC STOP
DI 17	120VAC STOP	DO 17	120VAC STOP
DI 18	120VAC STOP	DO 18	120VAC STOP
DI 19	120VAC STOP	DO 19	120VAC STOP
DI 20	120VAC STOP	DO 20	120VAC STOP
DI 21	120VAC STOP	DO 21	120VAC STOP
DI 22	120VAC STOP	DO 22	120VAC STOP
DI 23	120VAC STOP	DO 23	120VAC STOP
DI 24	120VAC STOP	DO 24	120VAC STOP
DI 25	120VAC STOP	DO 25	120VAC STOP
DI 26	120VAC STOP	DO 26	120VAC STOP
DI 27	120VAC STOP	DO 27	120VAC STOP
DI 28	120VAC STOP	DO 28	120VAC STOP
DI 29	120VAC STOP	DO 29	120VAC STOP
DI 30	120VAC STOP	DO 30	120VAC STOP
DI 31	120VAC STOP	DO 31	120VAC STOP
DI 32	120VAC STOP	DO 32	120VAC STOP
DI 33	120VAC STOP	DO 33	120VAC STOP
DI 34	120VAC STOP	DO 34	120VAC STOP
DI 35	120VAC STOP	DO 35	120VAC STOP
DI 36	120VAC STOP	DO 36	120VAC STOP
DI 37	120VAC STOP	DO 37	120VAC STOP
DI 38	120VAC STOP	DO 38	120VAC STOP
DI 39	120VAC STOP	DO 39	120VAC STOP
DI 40	120VAC STOP	DO 40	120VAC STOP
DI 41	120VAC STOP	DO 41	120VAC STOP
DI 42	120VAC STOP	DO 42	120VAC STOP
DI 43	120VAC STOP	DO 43	120VAC STOP
DI 44	120VAC STOP	DO 44	120VAC STOP
DI 45	120VAC STOP	DO 45	120VAC STOP
DI 46	120VAC STOP	DO 46	120VAC STOP
DI 47	120VAC STOP	DO 47	120VAC STOP
DI 48	120VAC STOP	DO 48	120VAC STOP
DI 49	120VAC STOP	DO 49	120VAC STOP
DI 50	120VAC STOP	DO 50	120VAC STOP

UV COMPONENTS



WIRING BY GAYLORD
FIELD WIRING BY OTHERS
OPTIONAL WIRING BY GAYLORD

LEGEND

- CONTROL RELAY
- TERMINAL STRIP CONNECTION
- WIRE NUMBER
- PLC CONNECTOR

GPC INTERNAL ELECTRICAL COMPONENTS				
TAG	DESCRIPTION	SIZE	PART#	MANUFACTURER QTY GPN
CR1-8	CONTROL RELAY	SEE OUTPUT MODULE B.O.M.		
DA1	DAMPER ACTUATOR	24V	AF24-MFT.9 S-0001	BELIMO X
DA2	DAMPER ACTUATOR	24V	AF24.9 US	BELIMO X
DCP	24VDC POWER SUPPLY	25W	PS-25-24	AS/WOODYNE 1
F1	FUSE-24VDC PWR SUPPLY	2A	AUC-2	BUSSMANN 1
F2	FUSE-PLC = 120V	4A	AUC-4	BUSSMANN 1
F3	FUSE-EXHAUST FAN	1A	MOL-1	BUSSMANN 1
F4	FUSE-TX1 - PRIMARY	2A	AGC-2	BUSSMANN 1
F6	FUSE-TX1 - SECONDARY	6A	AGC-6	BUSSMANN 1
TX1	TRANSFORMER	100VA	9070T100023	SQUARE D 1 18861
PLC	AROMAT PLC	24 I/O	FFG-C24R2	AROMAT 1 19129
PEM	AROMAT EXP. MODULE	8 I/O	FFP-EBYRS	AROMAT 1-2 18867
OIT	OPERATOR INTERFACE	N/A	ATM-10N	AROMAT 1
OUTP	OUTPUT MODULE	N/A	IC32.02-102	ASI 1
ESP COMPONENTS				
CR0	CONTROL RELAY	SPDT	RHBU-AC120V DEC	3 11399
11,12	SOCKET	SPDT	SHB-05	DEC 3 11413
CR10	CONTROL RELAY	SPDT	RHBU-AC120V DEC	1 11399
	SOCKET	SPDT	SHB-05	DEC 1 11413
CR10	CONTRACTOR	DPDT	CA-DK2206	TELMED-AMIQUE 1 16K33

120 VAC, 50-60HZ, 600 WATTS MAXIMUM
20 AMPS MAXIMUM

GENERAL NOTES

1. ALL EXTERNAL CONTROL WIRING SHALL BE 12 GAUGE UNLESS OTHERWISE SPECIFIED.
2. THE HOLDING COILS WITHIN THE WASHING TANKS SHALL MATCH THE SUPPLY VOLTAGE. WASHING TANKS ARE SUPPLIED BY OTHERS.
3. ALL VOLTAGE FREE CONTACTS FOR EXTERNAL SHALLING ARE RATED FOR 3A @ 240 VAC.
4. THE SWITCH TERMINALS A & B SHALL BE NORMALLY OPEN. THE SWITCH WHICH ACTIVATES THE TERMINAL THE MAKE.
5. THE SYSTEM TERMINALS A & B OR CONTACTS SHALL BE NORMALLY CLOSED AND INTERNAL OF EXTERNAL THE MAKE.
6. DISPLAY WILL FLASH "FOR EXTENSION" WHEN ACTIVATED AND NOT IN WASH MODE. OUT JUMPER (L1), AND REMOVE INT. JUMPER BETWEEN #1 & 13 WHEN REVOLVING FLUSH SWITCH.
7. IN EXTERNAL THE MAKE PROVIDE THE SWITCH CONTACTS CLOSED TERMINAL AT DC ENERGIZES STARTING OF SUPPLY FAN. TERMINAL #13 ENERGIZES TANKING OR EXHAUST FAN.
8. IN EXTERNAL THE MAKE (THERMOSTAT) ACTIVATED TERMINALS #1 AND #13. EXHAUST, STARTING OF EXHAUST AND SUPPLY FAN.
9. OUT JUMPER (L1) AND REMOVE INT. JUMPER BETWEEN #1 & 13. OUT WHEN COIL OR 24V DAMPER MOTOR ARE CONNECTED TO THE CONTROL CABLE.

GENERAL NOTES

- * 2ND PWR (PLC EXPANSION MODULE) NOT REQUIRED FOR AF24.9 OR LOWER. PEM IS REQUIRED FOR AN "50" OR HIGHER.
- * 100VA TRANSFORMER GOOD FOR UP TO 10 DAMPERS.

MAIN ELECTRICAL SERVICE TO BE FUSED SEPARATELY. SEE "SUPPLY VOLTAGE" FOR POWER REQUIREMENTS

LEGEND

(C)	CONTROL RELAY
(S)	TERMINAL STRIP CONNECTION
(W)	WIRE NUMBER
(E)	PLC CONNECTOR

--- WIRING BY GAYLORD
- - - FIELD WIRING BY OTHERS
- - - OPTIONAL WIRING BY GAYLORD

12 13
N
G

PLC I/O SCHEDULE

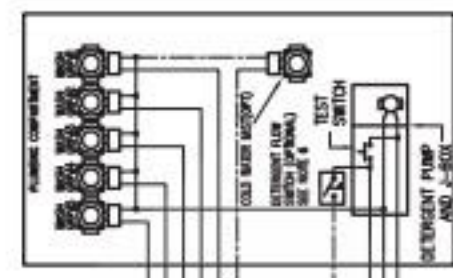
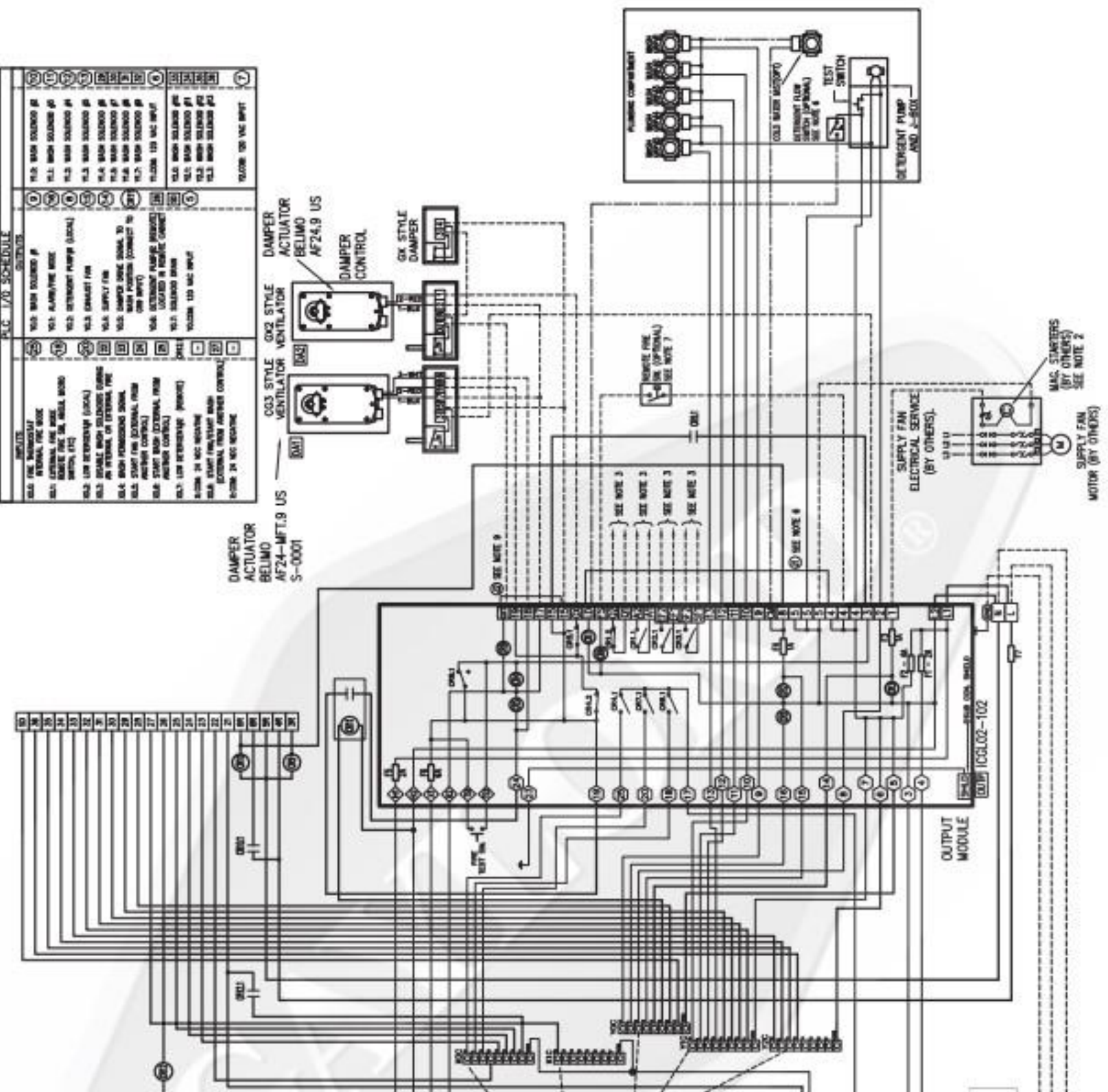
INPUTS	OUTPUTS
<ul style="list-style-type: none"> 10.0 MAIN SOLENOID #1 10.1 MAIN SOLENOID #2 10.2 MAIN SOLENOID #3 10.3 MAIN SOLENOID #4 10.4 MAIN SOLENOID #5 10.5 MAIN SOLENOID #6 10.6 MAIN SOLENOID #7 10.7 MAIN SOLENOID #8 10.8 MAIN SOLENOID #9 10.9 MAIN SOLENOID #10 10.10 120 VAC INPUT 10.11 MAIN SOLENOID #11 10.12 MAIN SOLENOID #12 10.13 MAIN SOLENOID #13 10.14 120 VAC INPUT 	<ul style="list-style-type: none"> 10.0 MAIN SOLENOID #1 10.1 MAIN SOLENOID #2 10.2 MAIN SOLENOID #3 10.3 MAIN SOLENOID #4 10.4 MAIN SOLENOID #5 10.5 MAIN SOLENOID #6 10.6 MAIN SOLENOID #7 10.7 MAIN SOLENOID #8 10.8 MAIN SOLENOID #9 10.9 MAIN SOLENOID #10 10.10 120 VAC INPUT 10.11 MAIN SOLENOID #11 10.12 MAIN SOLENOID #12 10.13 MAIN SOLENOID #13 10.14 120 VAC INPUT

DAMPER ACTUATOR BELIMO AF24-MFT.9 US S-0001

CO3 STYLE VENTILATOR VENTILATOR

OX2 STYLE DAMPER ACTUATOR BELIMO AF24.9 US

OX1 STYLE DAMPER CONTROL



MAC STARTERS (BY OTHERS) SEE NOTE 2

SUPPLY FAN MOTOR (BY OTHERS)