

Parts Catalog



GSCS2 & GSCS3

Cheese Shredder

Models: GSCS2 & GSCS3

9-7-2023 Rev E

IMPORTANT!

TO EXPEDITE SHIPMENT OF PARTS, ALWAYS SPECIFY MODEL, REV,
PART NUMBER, AND SERIAL NUMBER OF UNIT.

GLOBE FOOD EQUIPMENT COMPANY

2215 East River Road
Dayton, Ohio 45439

Parts Department

Toll Free 1-800-745-6238 · Fax (937) 290-0585

E-Mail: info@globefoodequip.com

Website: www.globefoodequip.com

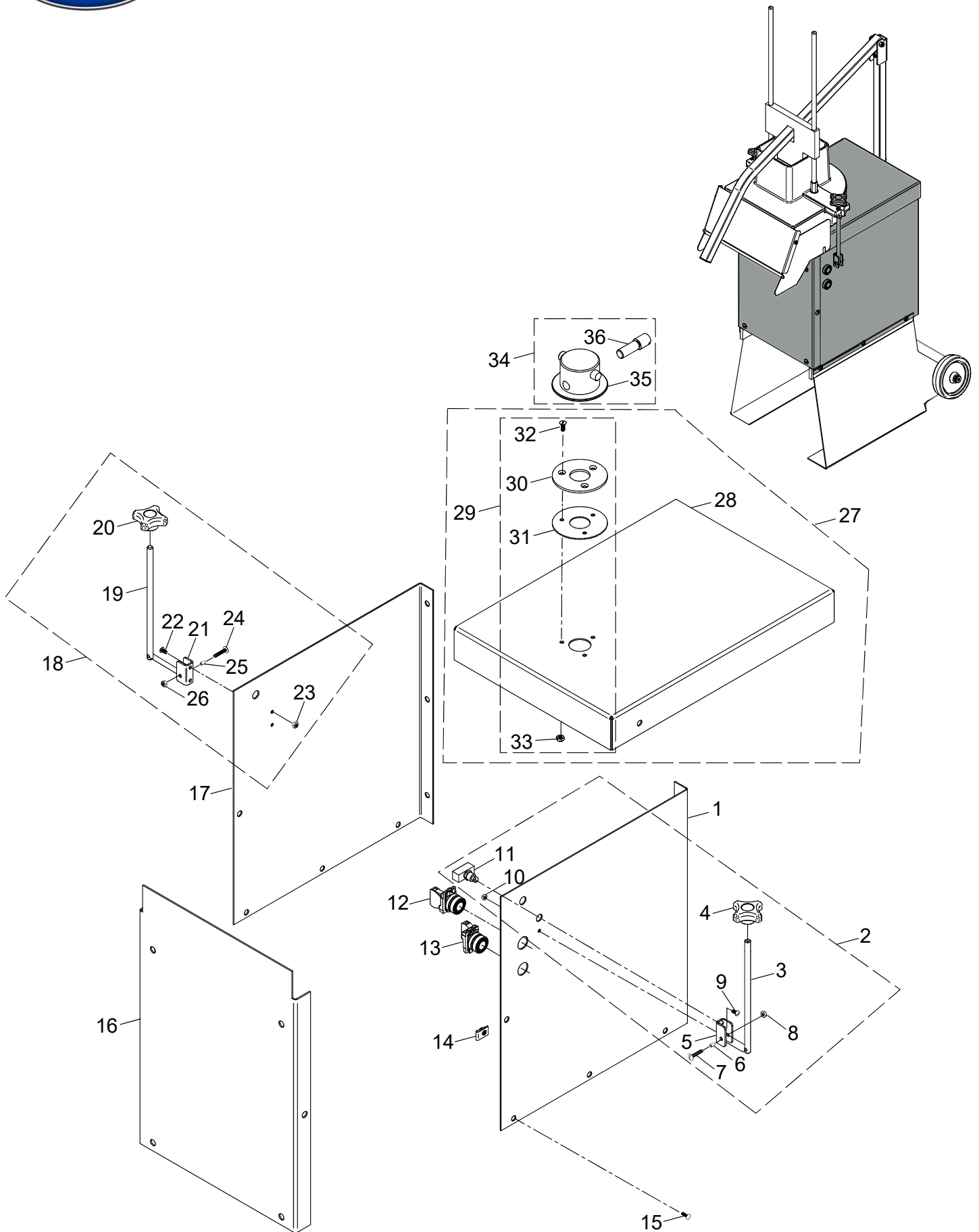
Not for resale

Table of Contents

Description	Page
Panel Components	3470
Food Zone Components	3472
Middle Shelf Assembly	3474
Rear & Base Components	3476
Electrical Components	3478
Base Components - Accessory	3480
Shelf Assembly - Accessory	3482
Wiring Diagram	3484



Panel Components



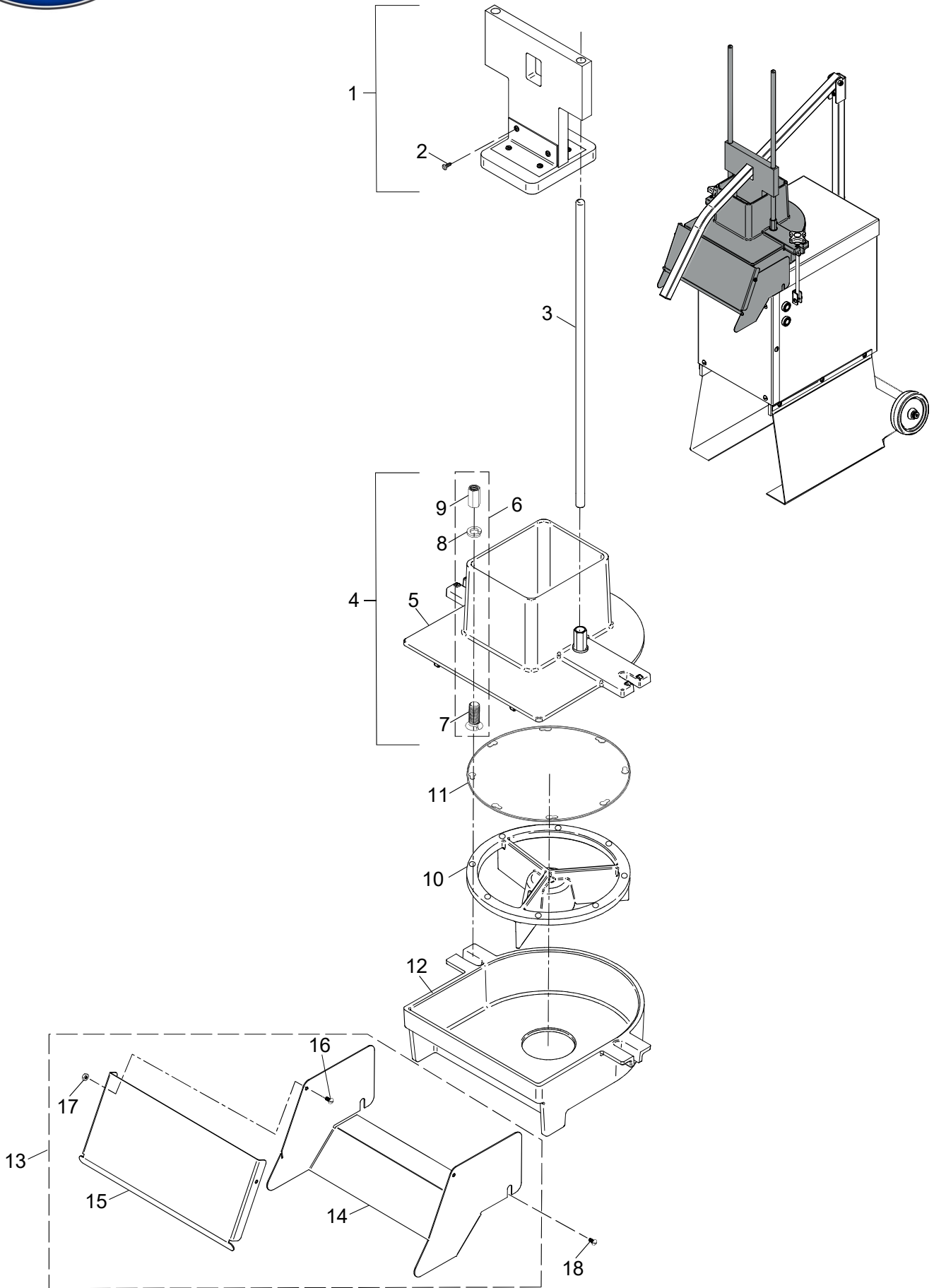


Panel Components

Item	Part Number	Description	Qty	Serial Number
1	300123	Panel, Left Side	1	
2	800296	Left Side Locking Knob Shaft Kit (Incl. items 3-11)	1	
3		Shaft, Locking Knob	1	
4		Knob, 3/8-16 Tie Down	1	
5		Mounts, Locking Knob Channel, SST	1	
6	450271	Sleeve	1	
7	800241	Screw, 10-32 x 1 Truss Hd Slotted	1	
8	800231	Hex Nut, 10-32 Nylon-Insert	1	
9	800237	Screw 10-32x3/8 Truss Hd Slotted	1	
10	810458	Nut #10-32 Thin Nylon Lock Hex	1	
11	140115	Switch, Position	1	
12	140119	Switch, Power Stop	1	
13	140114	Switch, Power Start	1	
14	800244	Clip-On Barrel Nut 1/4-20	2	
15	800249	Slotted Truss Head Screw 1/4-20x0.75	18	
16	300126	Panel, Front, SST	1	
17	300119	Panel, Right Side	1	
18	800293	Right Side Locking Knob Shaft Kit (Incl. items 19-26)	1	
19		Shaft, Locking Knob	1	
20		Knob, 3/8-16 Tie Down	1	
21		Mounts, Locking Knob Channel, SST	1	
22	800237	Screw 10-32x3/8 Truss Hd Slotted	2	
23	810458	Nut #10-32 Thin Nylon Lock Hex	2	
24	800241	Screw, 10-32 x 1 Truss Hd Slotted	1	
25	450271	Sleeve	1	
26	800231	Hex Nut, 10-32 Nylon-Insert	1	
27	300172	Housing Top Assembly (Incl. items 28-33)	1	
28		Housing, Top, SST	1	
29	800288	Seal Cover Kit (Incl. items 30-33)	1	
30		Plate, Seal Cover, SST	1	
31		Seal, Rubber	1	
32	810274	Screw, FH Slotted	3	
33	810458	Nut #10-32 Thin Nylon Lock Hex	3	
34	410026	Blade Holder Pin Drive Hub Assembly Kit (Incl. items 35-36)	1	
35		Blade Holder Pin Drive Hub Assembly	1	
36		Pin, Custom Hub to Drive Shaft	1	



Food Zone Components



3472

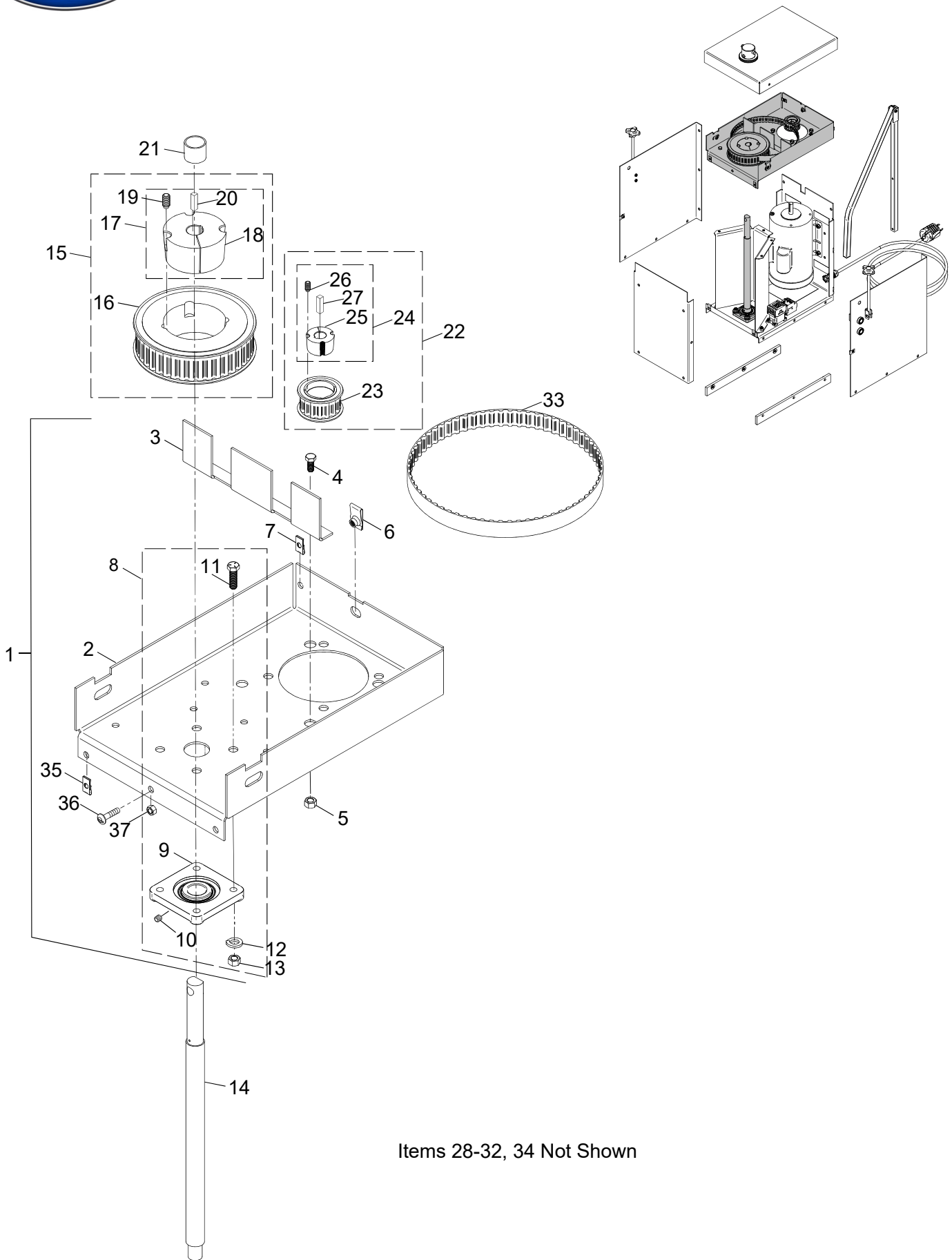


Food Zone Components

Item	Part Number	Description	Qty	Serial Number
1	510004	Plunger Assembly (Incls. item 2)	1	
2	800234	Screw #8x1/2 Pan Hd Slotted	8	
3	400046	Rod, Slider	2	
4	200121	Hopper Lid Assembly (Incls. items 5-9)	1	
5		Hopper Lid	1	
6	800285	Hopper Lid Hardware Kit (Incls. items 7-9)	1	
7	800236	Screw 1/2-13x1.25L FH Slotted	1	
8	800235	Washer 1/2" ID Split Lock	1	
9	800224	Nut 1/2-13 Coupling, SST	1	
10	400206	Pin Drive Blade Holder Assembly	1	
11		KD 3/16 Grater Disk Equivalent of XSP316-HD	1	
12	200039	Hopper Blade Housing	1	
13	300171	Chute Assembly (Incls. items 14-17)	1	
14		Chute, Cheese	1	
15		Cover, Cheese Chute	1	
16	800237	Screw 10-32x3/8 Truss Hd Slotted	2	
17	810458	Nut #10-32 Thin Nylon Lock Hex	2	
18	800247	Bolt 5/16-18 Square-Neck Carriage	2	
19	920202	Globe Logo Decal (Not Shown)	1	



Middle Shelf Assembly



Items 28-32, 34 Not Shown

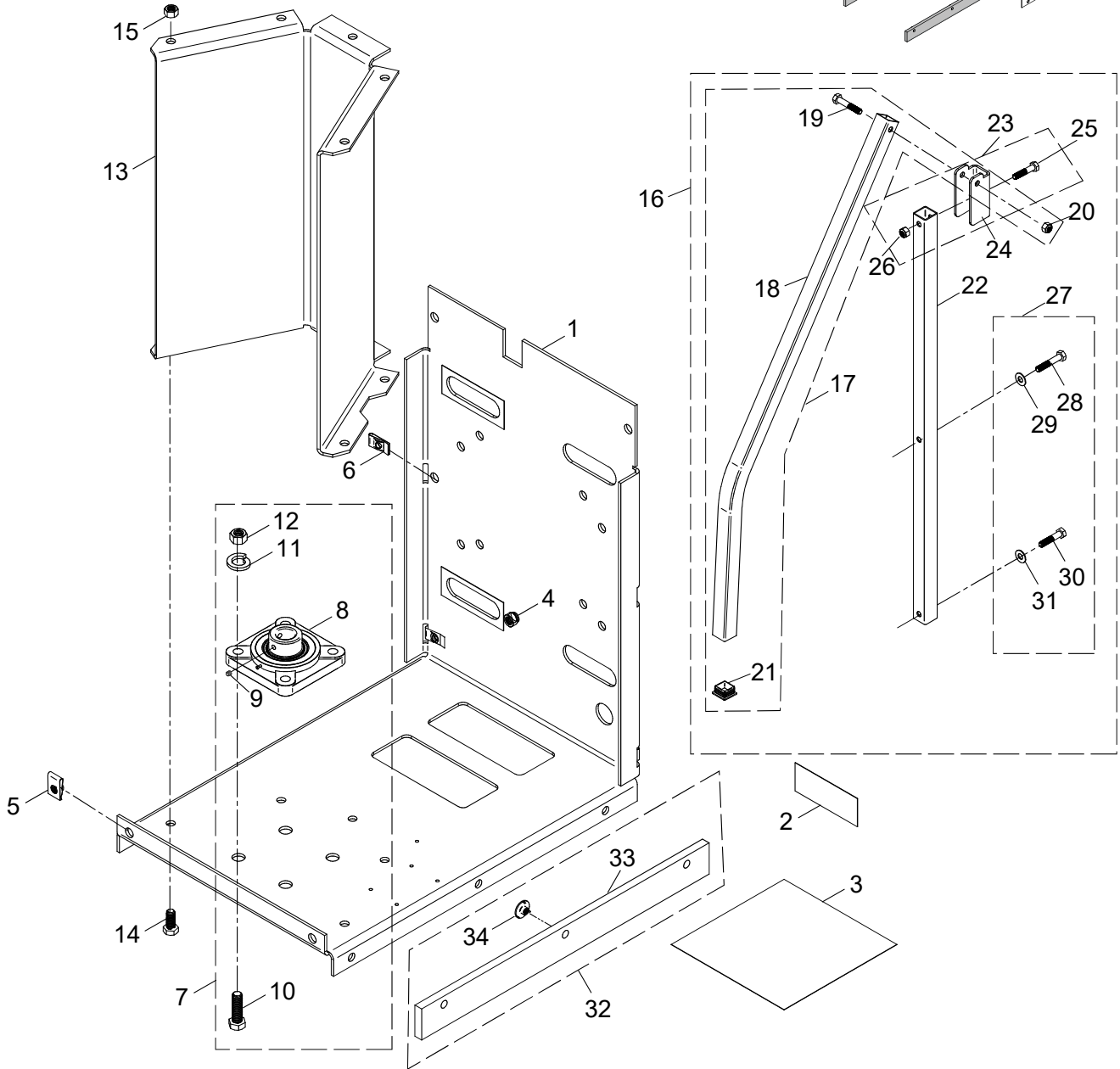
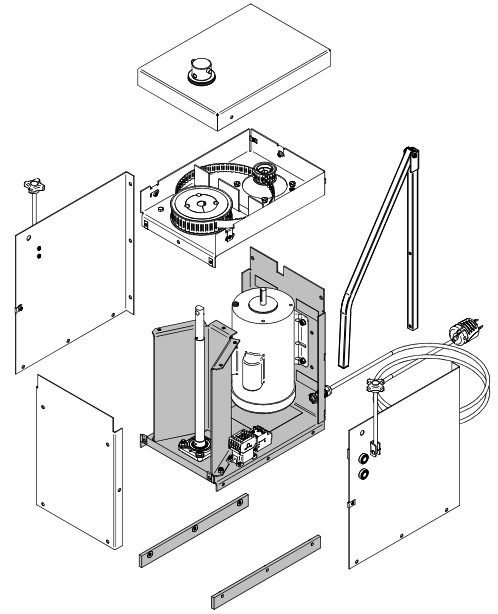


Middle Shelf Assembly

Item	Part Number	Description	Qty	Serial Number
1	300175	Middle Shelf Assembly (Incls. items 2-12)	1	
2		Shelf, Middle Transmission, SST	1	
3		Shield, Belt	1	
5	800050	Locknut 5/16-18 /unc-2A Hex	2	
6	800245	Nut 5/16-18 No-Slip Clip-On	3	
7	800243	Nut 1/4-20 No-Slip Clip-On	2	
8	800287	1" ID 4-Bolt Flange Bearing Kit (Incls. items 9-13)	1	
9		Flange Bearing, 4-Bolt 1" ID	1	
10		Knurl Pt. 1/4-28 UNFx1/4 Set Screw	2	
11	800250	Screw, 3/8-16 x 1.25L Hex Hd	4	
12	800252	Washer, 3/8 Split Lock	4	
13	800251	Nut, 3/8-16 Hex	4	
14	400204	Shaft, Drive	1	
15	800292	Drive Pulley & Taperlock Kit (Incls. items 16-20)	1	
16		Pulley, Drive	1	
17	800289	Drive Taperlock Kit (Incls. items 18-20)	1	
18		Taperlock 2517 Bore .875	1	
19		Screw, 1/2-13x1 Flat Point Set	2	
20		3/16" Sq. x 2.0 Machine Key	1	
21		Blade Holder Pin Drive Hub Assembly	1	
22	800297-01	Motor Pulley & Taperlock 2HP Kit (Incls. items 23-26)	1	
23		Motor Pulley	1	
24	800295-01	Motor Taperlock 2HP Kit (Incls. items 25-26)	1	
25		Taperlock 1108 5/8 Bore	1	
26		Screw 1/4-20 x 1/2" Flat Point Set	2	
27		3/16" Sq. x 2.0 Machine Key	1	
28	800297-02	Motor Pulley & Taperlock 3HP Kit (Not Shown)	1	
29		Motor Pulley (Not Shown)	1	
30	800295-02	Motor Taperlock 3HP Kit (Not Shown)	1	
31		Taperlock 1108 1-1/8 Bore (Not Shown)	1	
32		Screw 1/4-20 x 1/2" Flat Point Set (Not Shown)	2	
33	510006	Belt, 2HP Timing	1	
34	510007	Belt, 3HP Timing (Not Shown)	1	
35	800244	Clip-On Barrel Nut 1/4-20	2	
36	800249	Slotted Truss Head Screw 1/4-20x0.75	1	
37	810438	Nylon Insert Lock Nut 1/4-20	1	



Rear & Base Components

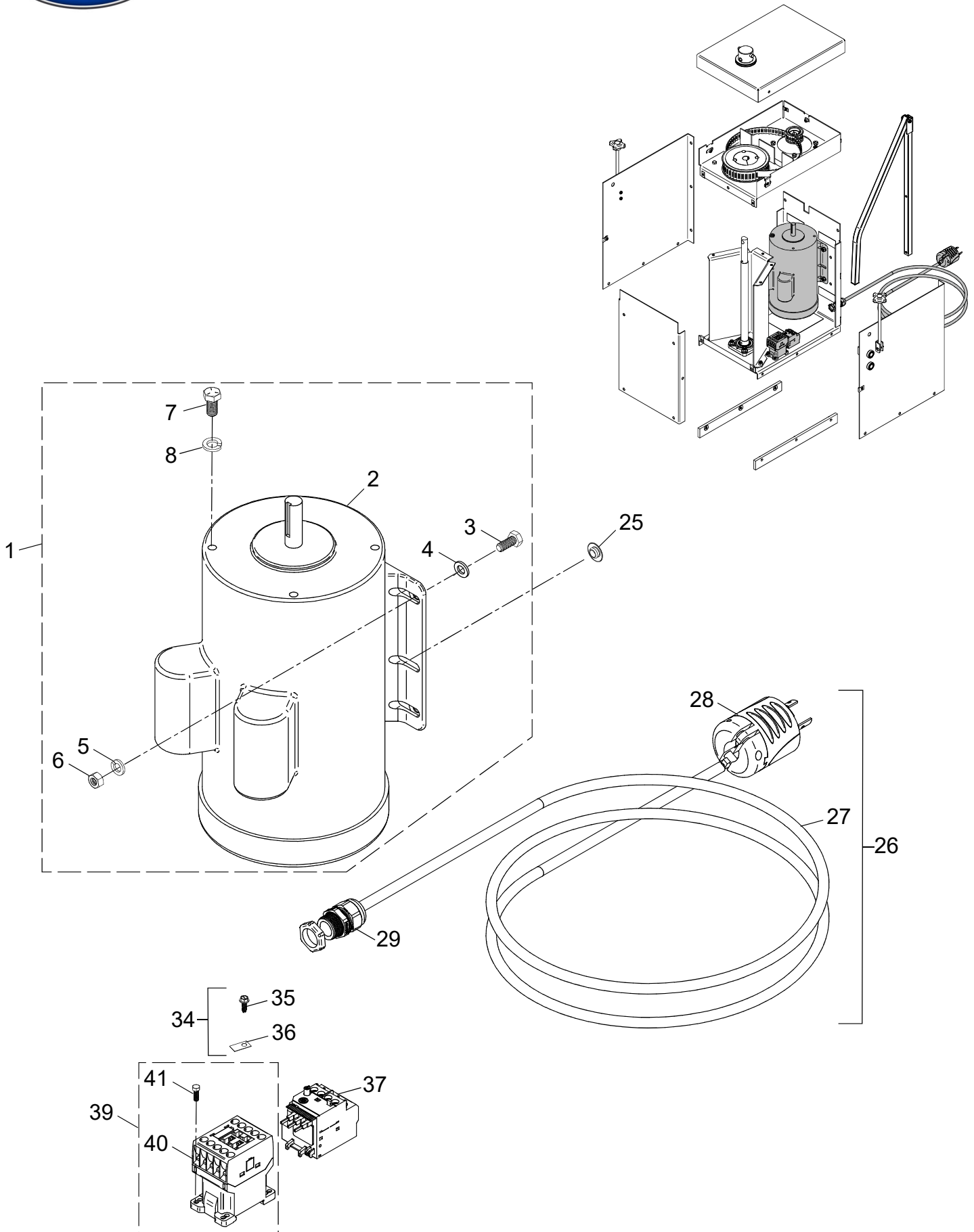


3476



Rear & Base Components

Item	Part Number	Description	Qty	Serial Number
1	300157	Panel, Rear & Base, SST	1	
2		Cover 1.3 x 3.3 Steel Mesh Vent	4	
3		Cover 6.0 x 6.0 Steel Mesh Vent	1	
4		Nut 5/16-18 Sheet Metal Press-Fit	1	
5	800244	Clip-On Barrel Nut 1/4-20	2	
6	800243	Nut 1/4-20 No-Slip Clip-On	4	
7	800290	3/4" Four Bolt Flange Bearing Kit (Incls. items 8-12)	1	
8		Bearing 3/4 ID 4-Bolt Flange	1	
9	800250	Screw, 3/8-16 x 1.25L Hex Hd	4	
10		Knurl Pt. 1/4-28 UNFx1/4 Set Screw	2	
11	800252	Washer, 3/8 Split Lock	4	
12	800251	Nut, 3/8-16 Hex	4	
13	300143	Shield, Motor	1	
15	800050	Locknut 5/16-18 /unc-2A Hex	5	
16	310106	Drive Link Assembly (Incls. items 17-31)	1	
17	310107	Bent Drive Link Kit (Incls. items 18-21)	1	
18		Drive Link, Bent	1	
19		Cap Screw, 5/16-18x1.75 Hx Hd	1	
20	800050	Locknut 5/16-18 /unc-2A Hex	1	
21	500084	Plug, Snap-in Square	2	
22		Drive Link, Straight Mount	1	
23	310108	Straight Mount Drive Link Kit (Incls. items 24-26)	1	
24		Coupler, Sheet Metal	1	
25		Screw 5/16-18x1.5L Hx Hd	1	
26	800050	Locknut 5/16-18 /unc-2A Hex	1	
27	800291	Drive Link Assembly Hardware Kit (Incls. items 28-31)	1	
28		Cap Screw, 5/16-18x1.75 Hx Hd	1	
29		Washer 5/16 Flat	1	
30		Screw 5/16-18x1.5L Hx Hd	1	
31		Washer 5/16 Flat	1	
32	500082	Glide Bar Assembly (Incls. items 33-34)	1	
33		Bar, Glide	1	
34	800238	Nut 1/4-20 Threaded Steel Tee	3	



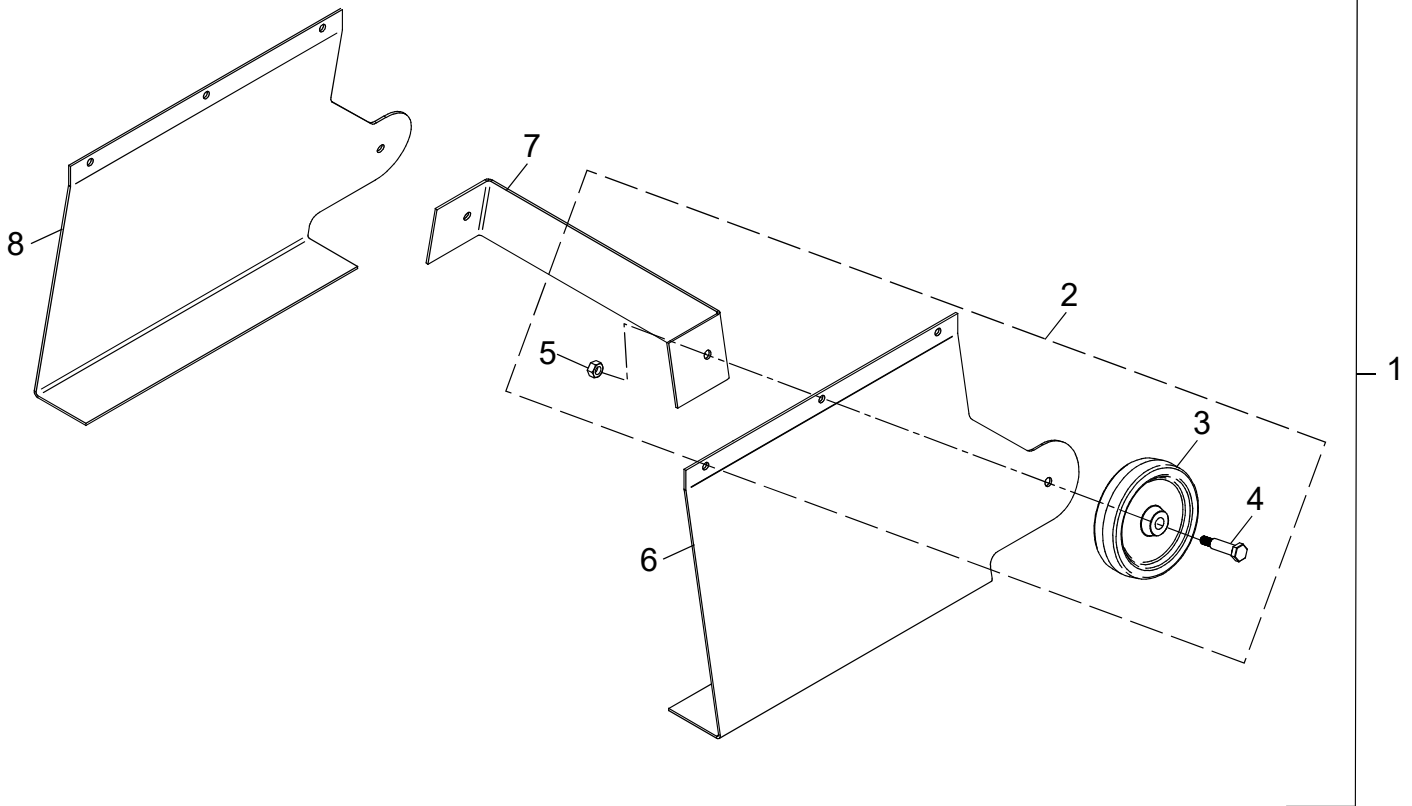
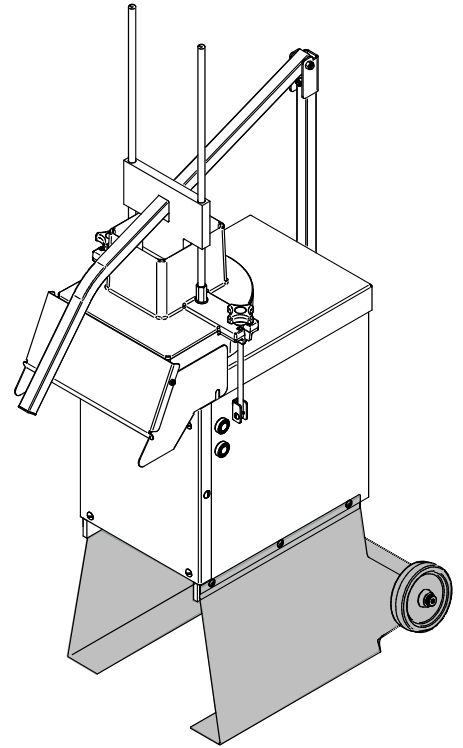


Electrical Components

Item	Part Number	Description	Qty	Serial Number
1	140112-01	Motor, 2HP 1800 rpm Kit, 1P (Incls. items 2-8)	1	
2		Motor, 2HP 1800 rpm, 1P	1	
4		Washer 5/16 Flat	4	
5	800248	Washer, 5/16-18 Split Lock	4	
6	800239	Hex Nut, 5/16-18 Drive	4	
7	800266	Screw, 3/8-16x.75L Hex Hd	4	
8	800252	Washer, 3/8 Split Lock	4	
9	140112-02	2HP Motor & Mounting Kit (Incls. items 10-16)	1	
10		Motor, 2HP 1800 rpm, 3P (Not Shown)	1	
12		Washer 5/16 Flat (Not Shown)	4	
13	800248	Washer, 5/16-18 Split Lock (Not Shown)	4	
14	800239	Hex Nut, 5/16-18 Drive (Not Shown)	4	
15	800266	Screw, 3/8-16x.75L Hex Hd (Not Shown)	4	
16	800252	Washer, 3/8 Split Lock (Not Shown)	4	
17	140124	3HP Motor & Mounting Kit (Incls. items 18-24)	1	
18		Motor, 3HP 1800 rpm, 3P (Not Shown)	1	
20		Washer 5/16 Flat (Not Shown)	4	
21	800248	Washer, 5/16-18 Split Lock (Not Shown)	4	
22	800239	Hex Nut, 5/16-18 Drive (Not Shown)	4	
23	800267	Screw, 1/2-13x.75L Hex Hd (Not Shown)	4	
24	800235	Washer 1/2" ID Split Lock (Not Shown)	4	
25	500083	Plug, 3/8 ID Snap-In Panel	4	
26	140113	Power Cord 220V 1P Kit (Incls. items 27-29)	1	
27		Power Cord 220V 1P	1	
28		NEMA Plug, L6-20P; 20A 250V	1	
29	130025	Strain Relief	1	
30	140123	Power Cord 220V 3P Kit (Incls. items 31-33)	1	
31		Power Cord 220V 3P (Not Shown)	1	
32		NEMA Plug, L15-20P; 20A 250V (Not Shown)	1	
33	130025	Strain Relief (Not Shown)	1	
34	140111	Ground Location Tab Kit (Incls. items 35-36)	1	
35		Screw, Green #8-32x5/16" Slotted Hex Hd Washer	1	
36		Tab, Ground Location	1	
37	140116-01	Circuit Breaker, Thermal Overload (3.1-4.2A) 3P	1	
38	140116-02	Circuit Breaker, Thermal Overload (7.6-10.0A) 2HP 1P (Not Shown)	1	
39	140110	Contactator Kit (Incls. items 40-41)	1	
40		Contactator, 3 Pole, 230VAC Coil	1	
41	670111	Screw 8-32x1/2" PH	4	



Base Components - Accessory



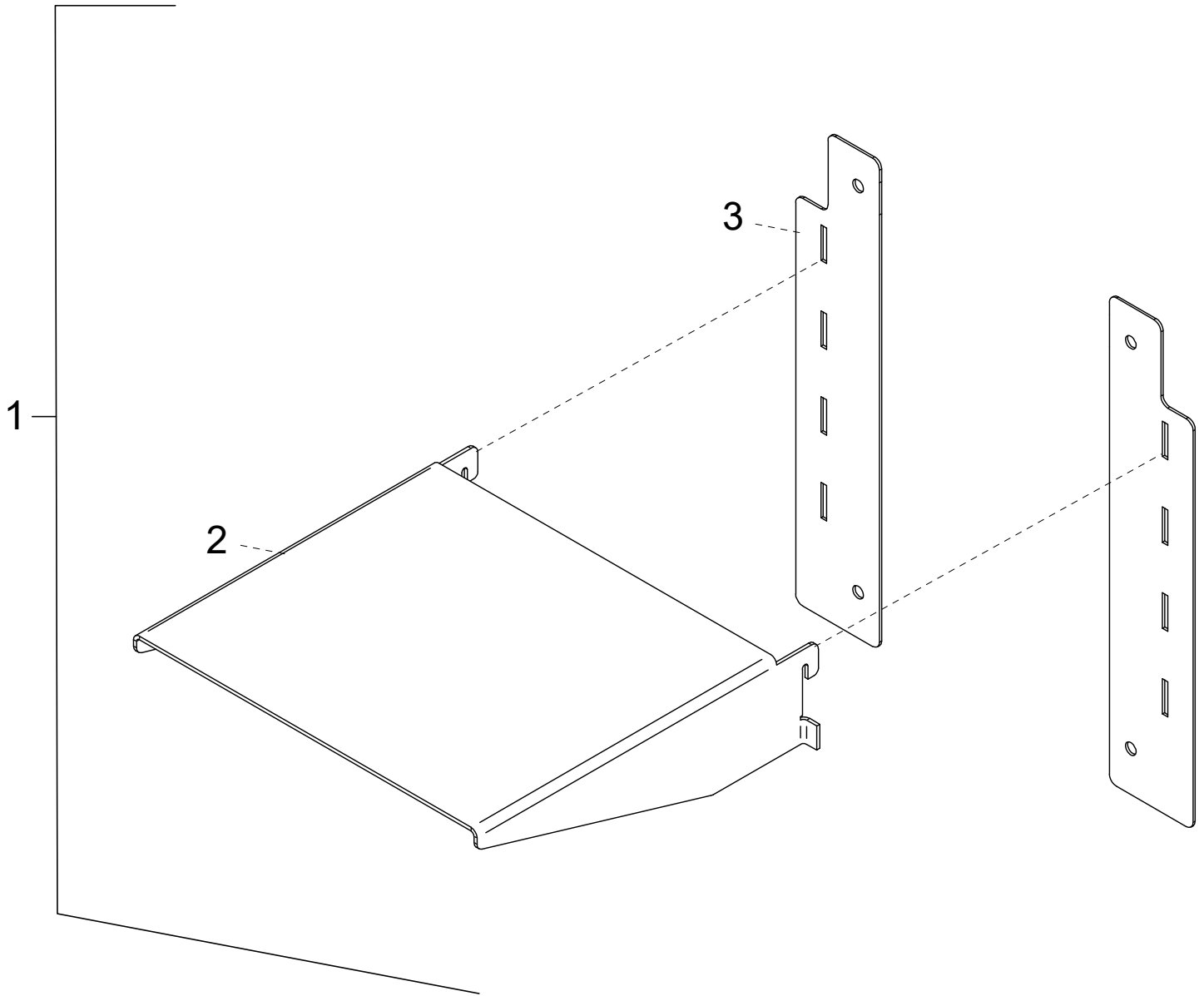


Base Components - Accessory

Item	Part Number	Description	Qty	Serial Number
1	300184	Base, Foot (Equiv. to GSCS-BASE)	1	
2	800286	Plastic Wheel Kit (Incls. items 2-5)	1	
3		Wheel, Plastic w/o bearing	1	
4	800271	Bolt 1/2" 1.625L, 3/8-16 Hx Hd, Shoulder	1	
5	890503	Locknut 3/8-16 Nylon-Insert	1	
6	300179	Right Side, Foot	1	
7	300180	Stablizer, Feet	1	
8	300178	Left Side, Foot	1	



Shelf Assembly - Accessory





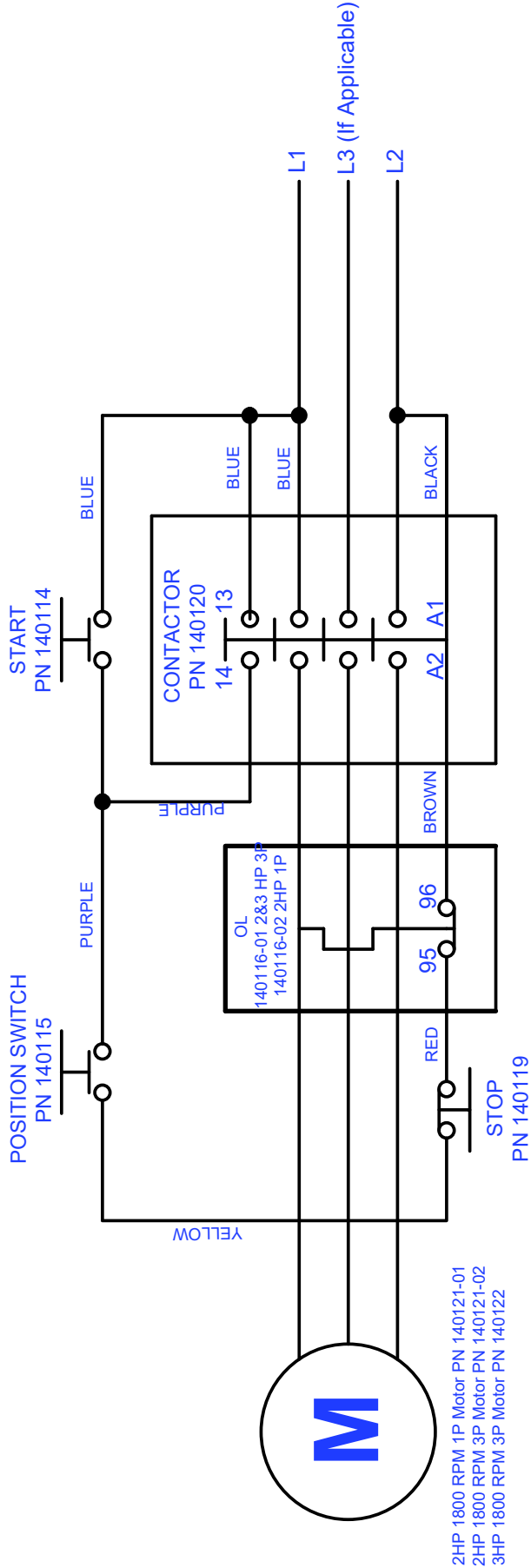
Shelf Assembly - Accessory

Item	Part Number	Description	Qty	Serial Number
1	300188	Shelf Assembly (Equiv. to GSCS-SHELF)	1	
2		Container, Shelf	1	
3		Shelf Support	2	



Wiring Diagram

WIRE PART NUMBERS (PN)
YELLOW (PN 130022)
PURPLE (PN 130024)
RED (PN 130021-02)
BLUE (PN 130023)
BLACK (PN 130021-03)
BROWN (PN 130021-01)



2HP - 1800 RPM 1P Motor PN 140121-01
 2HP - 1800 RPM 3P Motor PN 140121-02
 3HP - 1800 RPM 3P Motor PN 140122