

# GRINDMASTER CORPORATION™

## Liquid Coffee Dispenser

### Illustrated Parts Catalog

for

### LCD-2A (Ambient Cabinet) & LCD-2R (Refrigerated Cabinet)



*Prior authorization must be obtained from  
Grindmaster Corporation for all warranty claims.*

*Designs, material, weights, specifications, and dimensions  
for equipment or replacement parts are subject  
to improvements or change without notice.*



**GRINDMASTER™**  
CORPORATION

### Grindmaster Corporation™

4003 Collins Lane  
Louisville, Kentucky 40245  
(502) 425-4776 800-695-4500  
(800) 568-5715 (technical service only)  
FAX (502) 425-4664  
[www.grindmaster.com](http://www.grindmaster.com)

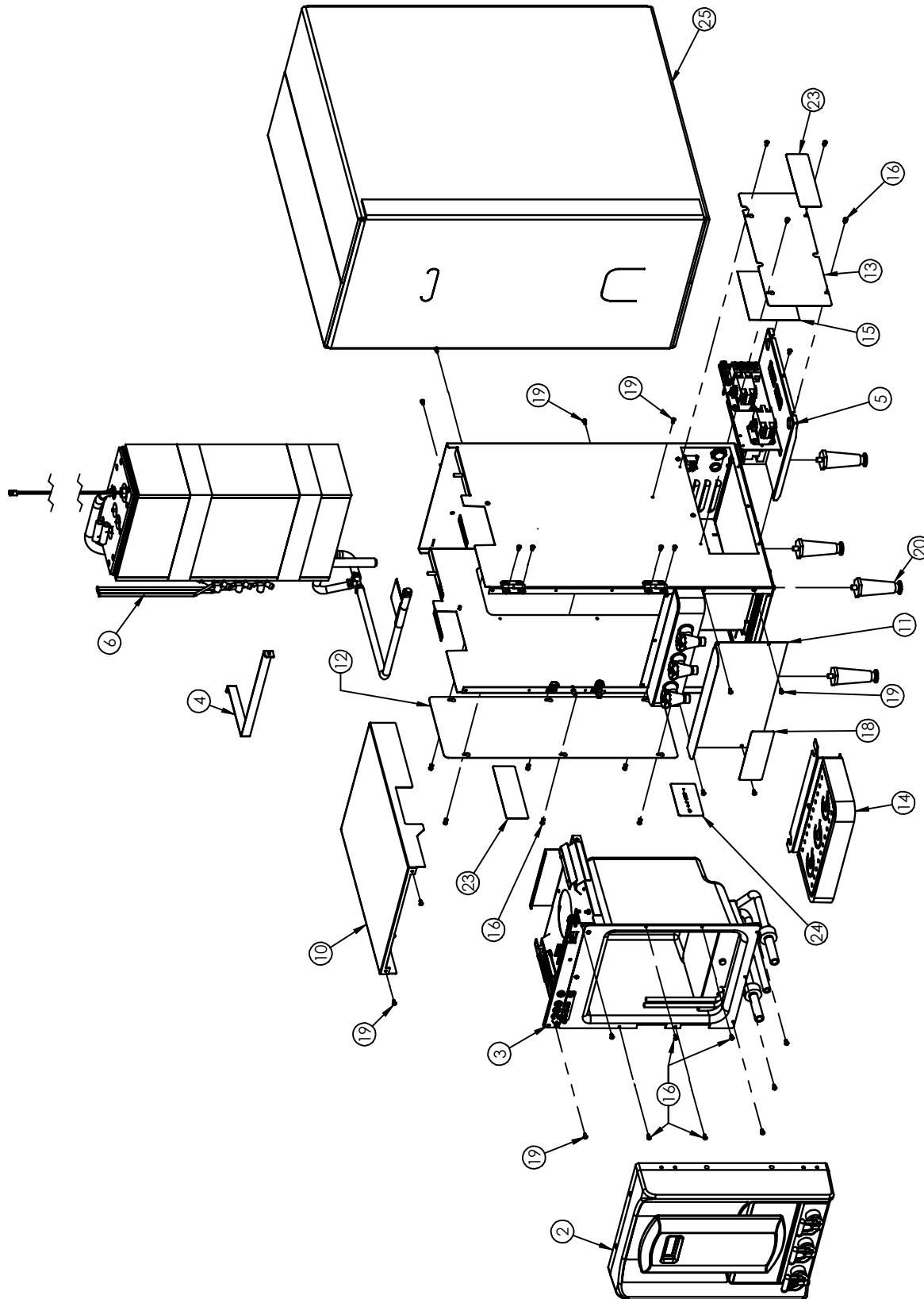


## **Table of Contents**

|   |            |
|---|------------|
| <b>LCD-2A (Ambient) Cabinet</b> .....                                   | <b>.4</b>  |
| <b>LCD-2R (Refrigerated) Cabinet</b> .....                              | <b>.6</b>  |
| <b>Touchpad Plate Assembly</b> .....                                    | <b>.8</b>  |
| <b>Touchpad Assembly</b> .....  | <b>.9</b>  |
| <b>Rear Fan Shroud Assembly</b> .....                                   | <b>.10</b> |
| <b>Peltier Sub-Assembly</b> .....                                       | <b>.10</b> |
| <b>Peltier Fan Shroud Sub-Assembly</b> .....                            | <b>.11</b> |
| <b>Drip Tray Components</b> .....                                       | <b>.12</b> |
| <b>BIB Support Bracket Sub-Assembly</b> .....                           | <b>.12</b> |
| <b>LCD-2A (Ambient) Door Bezel Assembly</b> ..                          | <b>.13</b> |
| <b>LCD-2R (Refrig) Door Bezel Assembly</b> ....                         | <b>.13</b> |
| <b>Casing Assembly</b> .....  | <b>.14</b> |
| <b>LCD-2A (Ambient) Door Assembly<br/>with Pull Switches</b> .....      | <b>.16</b> |
| <b>LCD-2R (Refrigerated) Door Assembly<br/>with Pull Switches</b> ..... | <b>.18</b> |
| <b>Door Sub-Assembly</b> .....  | <b>.20</b> |
| <b>Control Bracket</b> .....  | <b>.21</b> |
| <b>LCD-2A (Ambient) Product<br/>Storage Cabinet</b> .....               | <b>.22</b> |
| <b>LCD-2R (Refrig) Product<br/>Storage Cabinet</b> .....                | <b>.24</b> |
| <b>Hot Water Tank Components</b> .....                                  | <b>.26</b> |
| <b>Power Supply Assembly</b> .....                                      | <b>.28</b> |
| <b>Packaging Components</b> .....                                       | <b>.30</b> |
| <b>Warranty</b> .....   | <b>.32</b> |

# Model LCD-2A Cabinet

refer to page 5



Note: See individual sub-assembly exploded views for further part details

52000-00.siddrw

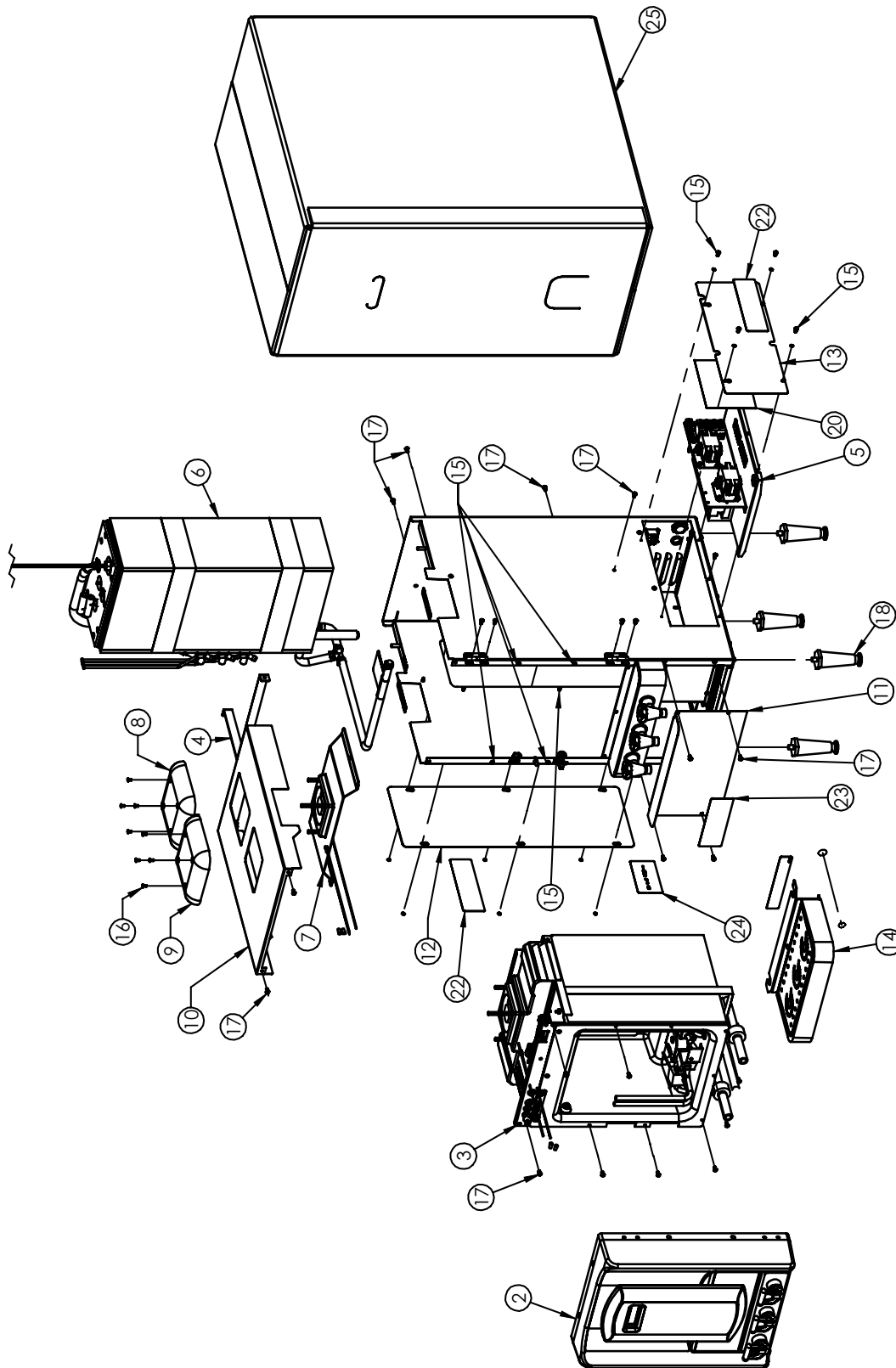
## Model LCD-2A Cabinet

refer to page 4

| ITEM NO. | PART NUMBER                                     | QTY. | DESCRIPTION                           |
|----------|---|------|---------------------------------------|
| 1        | 50000-04  | 1    | Casing assembly, LCD-2A&R             |
| 2        | 50050-04-A :<br>Ambient cabinet with pullswitch | 1    | LCD-2A&R Door assembly                |
| 3        | 50100-04-A<br>(Ambient cabinet)                 | 1    | Assembly, LCD product storage cabinet |
| 4        | 50405-05  | 1    | Tank Strap assembly                   |
| 5        | 52311-04  | 1    | Assembly, Power supply                |
| 6        | 50401-04  | 1    | Water tank sub-assembly, LCD-2A&R     |
| 10       | 53223-05<br>(Ambient cabinet)                   | 1    | Cover, LCD top                        |
| 11       | 50213-05  | 1    | Lower front plate                     |
| 12       | 52502-05  | 1    | Tank access panel                     |
| 13       | 50312-05  | 1    | Panel, LCD power inlet                |
| 14       | 63621   | 1    | Drain tray components                 |
| 15       | 50524-04  | 1    | Decal, LCD-2A&R Wiring                |
| 16       | 61303   | 16   | Screw, #8 x 3/8 black trilobe         |
| 18       | 62981   | 1    | Decal, Front Warning PIC              |
| 19       | 07026-07  | 22   | SCRW, 8-32 X 3/8 PH PN SS             |
| 20       | 71256   | 4    | Leg, 4" Plastic                       |
| 21       | 63629   | 2    | Decal, "Do not lift from opening"     |
| 22       | 61321   | 1    | Decal, Warning                        |
| 23       | 61326   | 2    | Decal, Caution Side PIC               |
| 24       | 00800   | 1    |                                       |
| 25       | 63596   | 1    | Packaging Assy,                       |

# Model LCD-2R Cabinet

refer to page 7



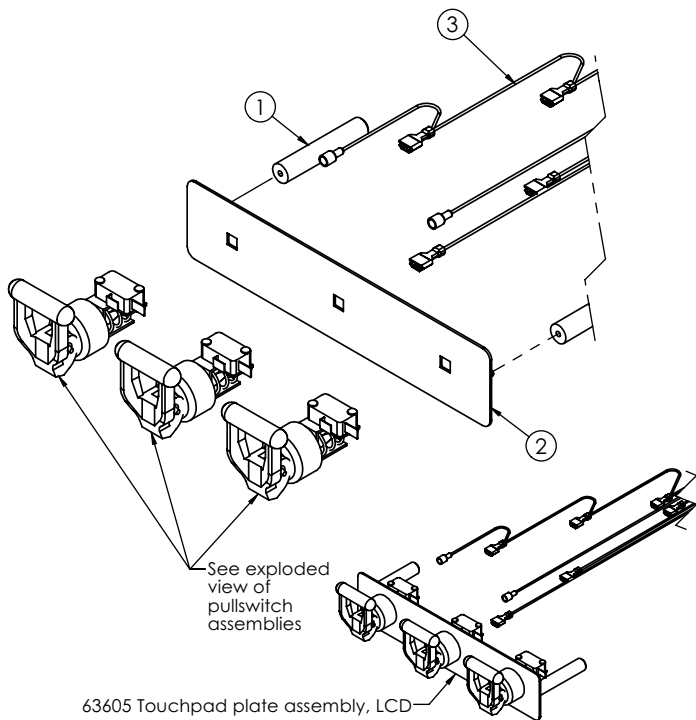
Note: See individual sub-assembly exploded views for further part details

## Model LCD-2R Cabinet

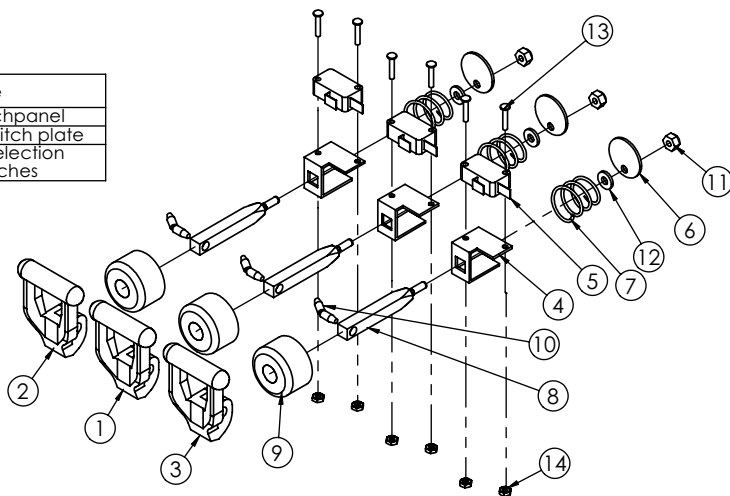
refer to page 6

| ITEM NO. | PART NUMBER                                       | QTY. | DESCRIPTION                                  |
|----------|---|------|--|
| 1        | 50000-04  | 1    | Casing assembly, LCD-2A&R                    |
| 2        | 50050-04-R :<br>Cooled cabinet<br>with pullswitch | 1    | LCD-2A&R Door assembly                       |
| 3        | 50100-04-R<br>(Refrigerated)                      | 1    | Assembly, LCD product storage<br>cabinet     |
| 4        | 50405-05  | 1    | Tank Strap assembly                          |
| 5        | 52311-04  | 1    | Assembly, Power supply                       |
| 6        | 50401-04  | 1    | Water tank sub-assembly, LCD-2A&R            |
| 7        | 63608   | 1    | Rear LCD fan shroud assembly                 |
| 8        | 50126-05  | 1    | Cover, Peltier Fan                           |
| 9        | 50117-05  | 1    | Cover, Peltier Fan                           |
| 10       | 52222-05<br>(Refrigerated)                        | 1    | Cover, LCD top                               |
| 11       | 50213-05  | 1    | Lower front plate                            |
| 12       | 52502-05  | 1    | Tank access panel                            |
| 13       | 50312-05  | 1    | Panel, LCD power inlet                       |
| 14       | 63621   | 1    | Drain tray components                        |
| 15       | 61303   | 16   | Screw, #8 x 3/8 black trilobe                |
| 16       | 10001-092   | 8    | Screw, 8-32 x 5/16" Flat Head Phillips<br>SS |
| 17       | 07026-07  | 26   | SCRW, 8-32 X 3/8 PH PN SS                    |
| 18       | 71256   | 4    | Leg, 4" Plastic                              |
| 19       | 63629   | 2    | Decal, "Do not lift from opening"            |
| 20       | 50524-04  | 1    | Decal, LCD-2A&R Wiring                       |
| 21       | 61321   | 1    | Decal, Warning                               |
| 22       | 61326   | 2    | Decal, Caution Side PIC                      |
| 23       | 62981   | 1    | Decal, Front Warning PIC                     |
| 24       | 00800   | 1    |  |
| 25       | 63596   | 1    | Packaging Assy,                              |

## Models LCD-2A & LCD-2R Touchpad Plate Assembly

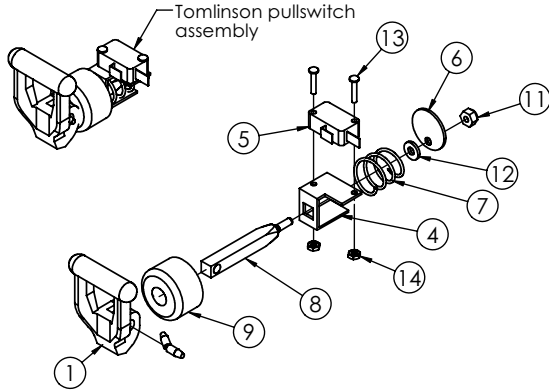


| ITEM NO. | PART NUMBER | QTY. | Title                           |
|----------|-------------|------|---------------------------------|
| 1        | 52078-05    | 2    | Pillar, Switchpanel             |
| 2        | 52056-05    | 1    | Tomlinson switch plate          |
| 3        | 52341-04    | 1    | Harness, Selection pullswitches |

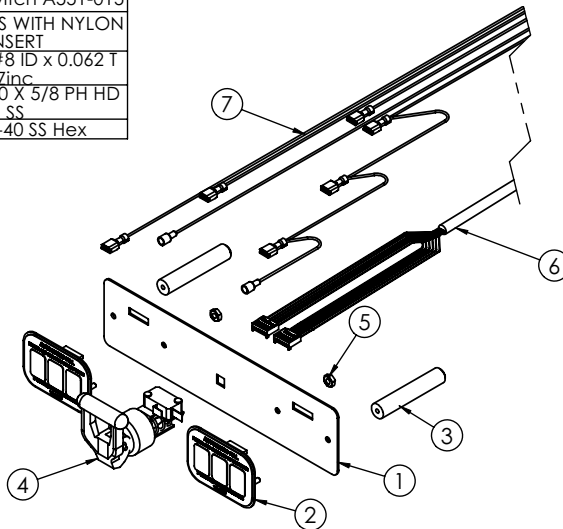


| ITEM NO. | PART NUMBER     | QTY. | DESCRIPTION                     |
|----------|-----------------|------|---------------------------------|
| 1        | 62267 Hot Water | 1    | Handle, Pull Switch             |
| 2        | 62266 Coffee    | 1    | Handle, Pull Switch             |
| 3        | 62268 Decaf     | 1    | Handle, Pull Switch             |
| 4        | 61883           | 3    | Bracket, Pullswitch Activation  |
| 5        | 61887           | 3    | Switch, Snap Action Micro       |
| 6        | 61881           | 3    | Washer, Pullswitch              |
| 7        | 62281           | 3    | Spring, Pull Switch A522120     |
| 8        | 63385           | 3    | Rod Pull Sw Mod 62259/A1101-019 |
| 9        | 62260           | 3    | Bezel, pull switch              |
| 10       | 62270           | 3    | Pin, Pull Switch A551-015       |
| 11       | 71261           | 3    | NUT 8-32 SS WITH NYLON INSERT   |
| 12       | 62334           | 3    | Washer, #8 ID x 0.062 T Zinc    |
| 13       | 71127           | 6    | Screw 4-40 X 5/8 PH HD SS       |
| 14       | 71128           | 6    | Nut, 4-40 SS Hex                |

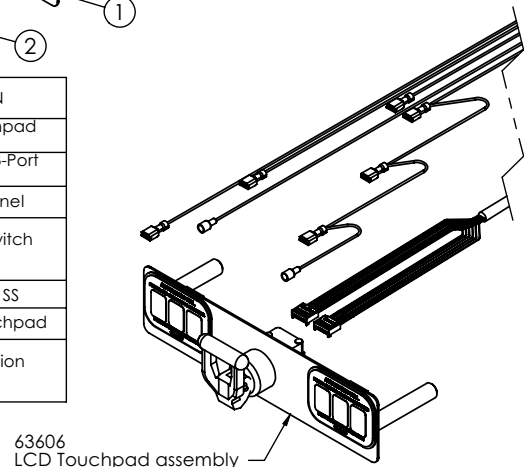
# Models LCD-2A & LCD-2R Touchpad Assembly



| ITEM NO. | PART NUMBER     | QTY. | DESCRIPTION                     |
|----------|-----------------|------|---------------------------------|
| 1        | 62267 Hot Water | 1    | Handle, Pull Switch             |
| 4        | 61883           | 1    | Bracket, Pullswitch Activation  |
| 5        | 61887           | 1    | Switch, Snap Action Micro       |
| 6        | 61881           | 1    | Washer, Pullswitch              |
| 7        | 62281           | 1    | Spring, Pull Switch A522120     |
| 8        | 63385           | 1    | Rod Pull Sw Mod 62259/A1101-019 |
| 9        | 62260           | 1    | Bezel, pull switch              |
| 10       | 62270           | 1    | Pin, Pull Switch A551-015       |
| 11       | 71261           | 1    | NUT 8-32 SS WITH NYLON INSERT   |
| 12       | 62334           | 1    | Washer, #8 ID x 0.062 T Zinc    |
| 13       | 71127           | 2    | Screw 4-40 X 5/8 PH HD SS       |
| 14       | 71128           | 2    | Nut, 4-40 SS Hex                |

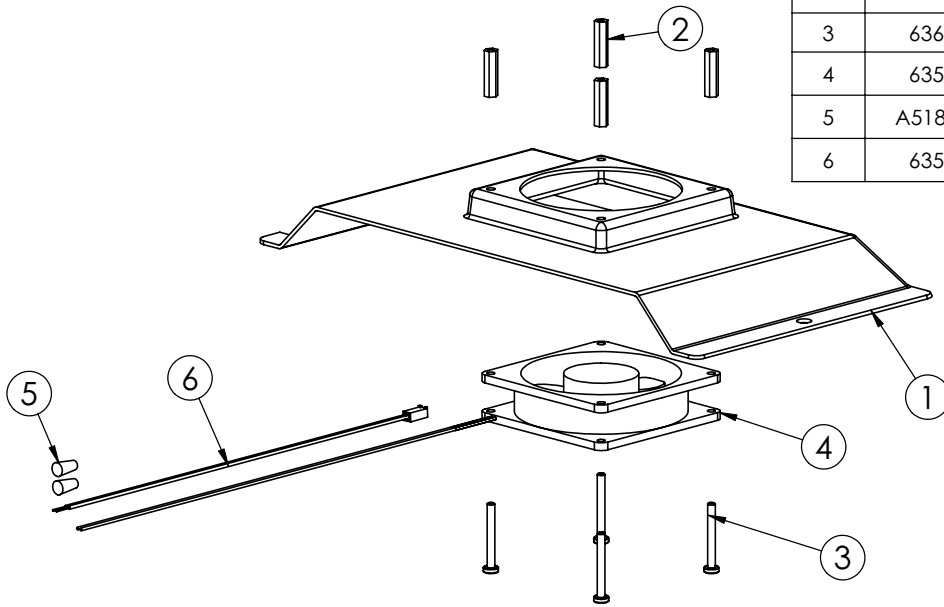


| ITEM NO. | PART NUMBER      | QTY. | DESCRIPTION                     |
|----------|------------------|------|---------------------------------|
| 1        | 52079-05         | 1    | Plate, LCD touchpad mounting    |
| 2        | 63435            | 2    | Touchpad Assy 3-Port FDD2500    |
| 3        | 52078-05         | 2    | Pillar, Switchpanel             |
| 4        | Hot Water Handle | 1    | Tomlinson pullswitch assembly   |
| 5        | 71129            | 2    | NUT, 8-32 KEPS SS               |
| 6        | 52355-04         | 1    | Harness, LCD touchpad           |
| 7        | 52341-04         | 1    | Harness, Selection pullswitches |



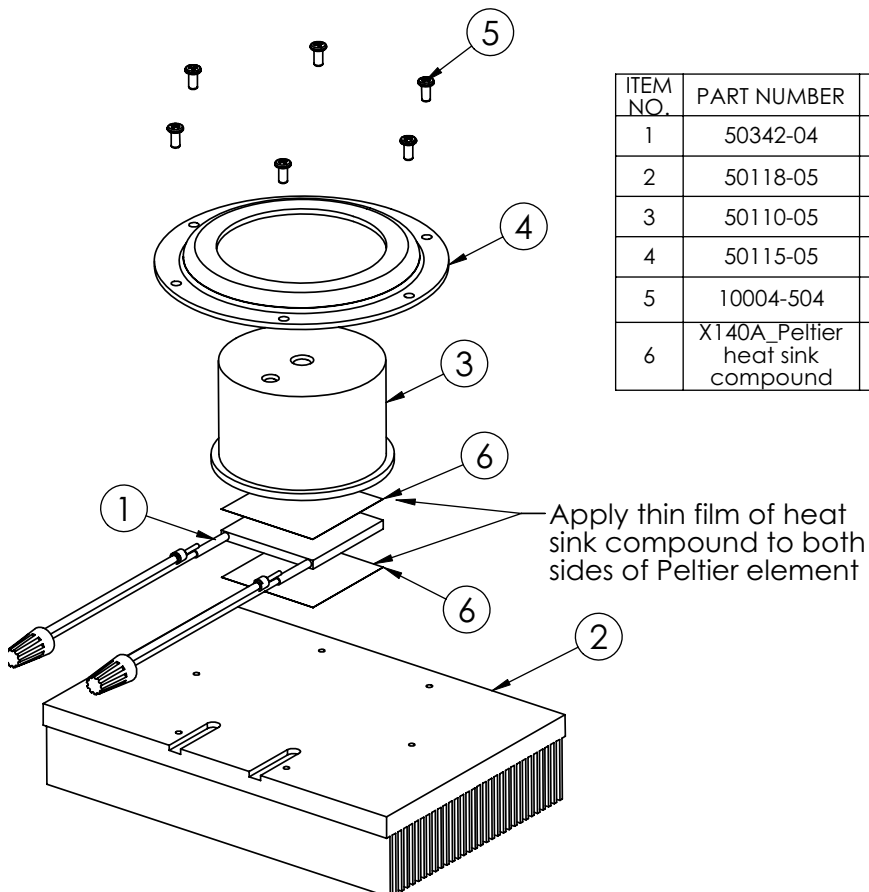
## Models LCD-2A & LCD-2R Rear Fan Shroud Assembly

| ITEM NO. | PART NUMBER | QTY. | Description                    |
|----------|-------------|------|--------------------------------|
| 1        | 52128-05    | 1    | Rear Fan moulding              |
| 2        | 63664       | 4    | Spacer, 1/4 hex x 1" x 8-32 AL |
| 3        | 63663       | 4    | Screw, 8-32 x 1 3/8" PPH SS    |
| 4        | 63570       | 1    | Fan, 92x92,25.4mm 12vdc 60cfm  |
| 5        | A518032     | 2    | Wire nut, Medium               |
| 6        | 63571       | 1    | Harness, LCD Fan               |

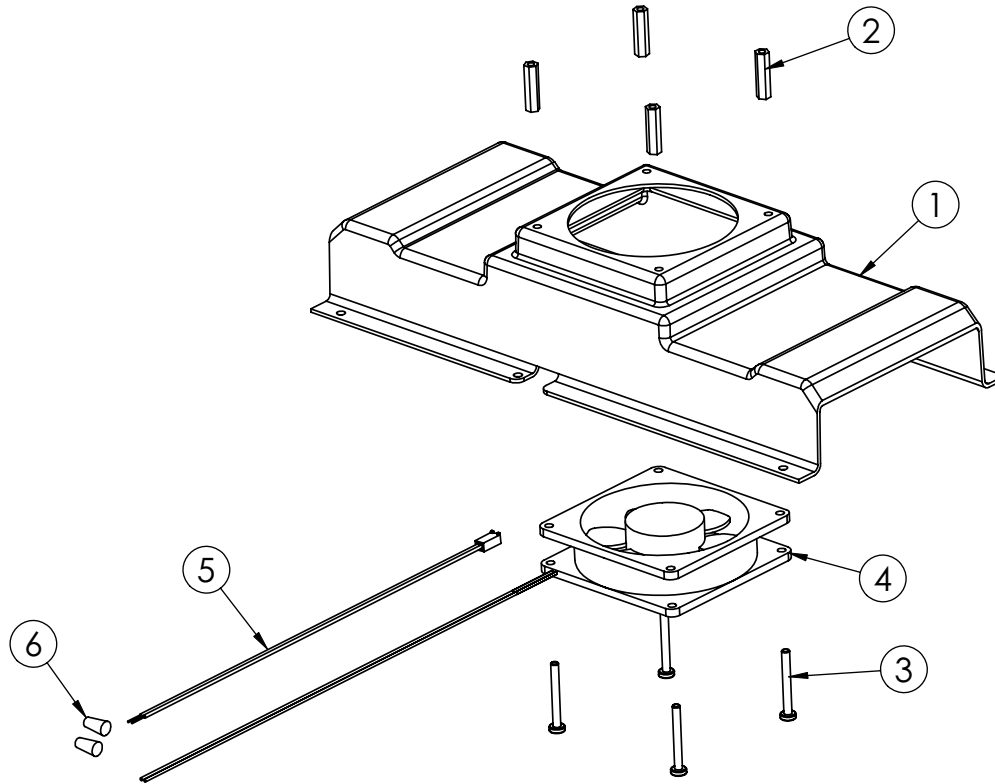


## Models LCD-2A & LCD-2R Peltier Sub-Assembly

| ITEM NO. | PART NUMBER                      | QTY. | DESCRIPTION                             |
|----------|----------------------------------|------|---|
| 1        | 50342-04                         | 1    | Harness, Peltier assembly               |
| 2        | 50118-05                         | 1    | Heat Sink, Peltier                      |
| 3        | 50110-05                         | 1    | Cold Block, Peltier                     |
| 4        | 50115-05                         | 1    | Peltier sealing ring                    |
| 5        | 10004-504                        | 6    | Screw, 4-40 x 1/4" Pan Phillips head SS |
| 6        | X140A_Peltier heat sink compound | 2    | Heat sink compound                      |

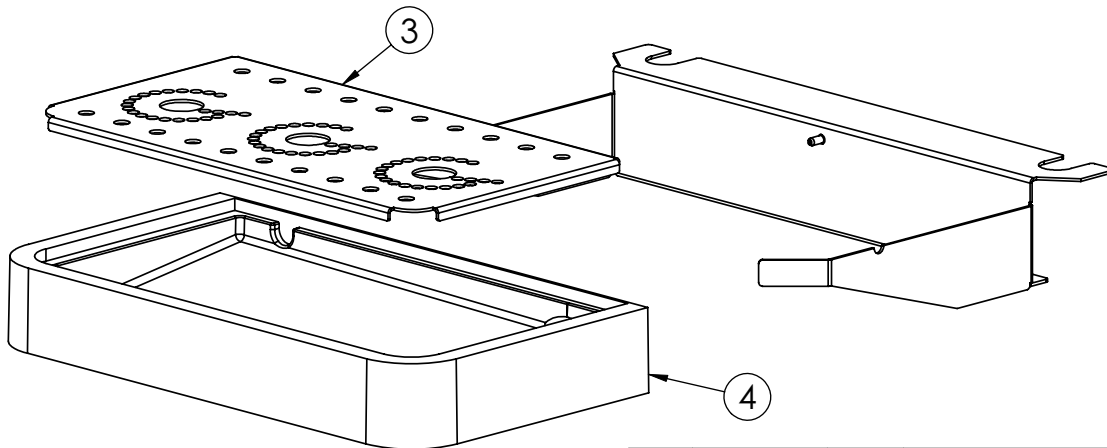


# Models LCD-2A & LCD-2R Peltier Fan Shroud Sub-Assembly



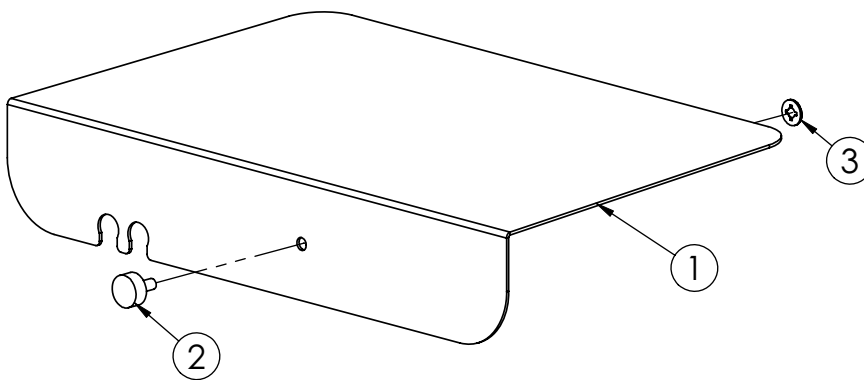
| BOM Table |             |      |  |
|-----------|-------------|------|--|
| ITEM NO.  | PART NUMBER | QTY. | DESCRIPTION                              |
| 1         | 52116-05    | 1    | Cooler fan duct                          |
| 2         | 63664       | 4    | Spacer, 7mm hex x 25mmL M4 thread        |
| 3         | 63663       | 4    | Screw, M4 x 0.7 x 35mm Pan Phillips head |
| 4         | 63570       | 1    | Fan, 92mm x 92mm x 25mm 12vdc            |
| 5         | 63571       | 1    | Harness, LCD fan                         |
| 6         | A518032     | 2    | Wire nut, Medium                         |

## Models LCD-2A & LCD-2R Drip Tray Components



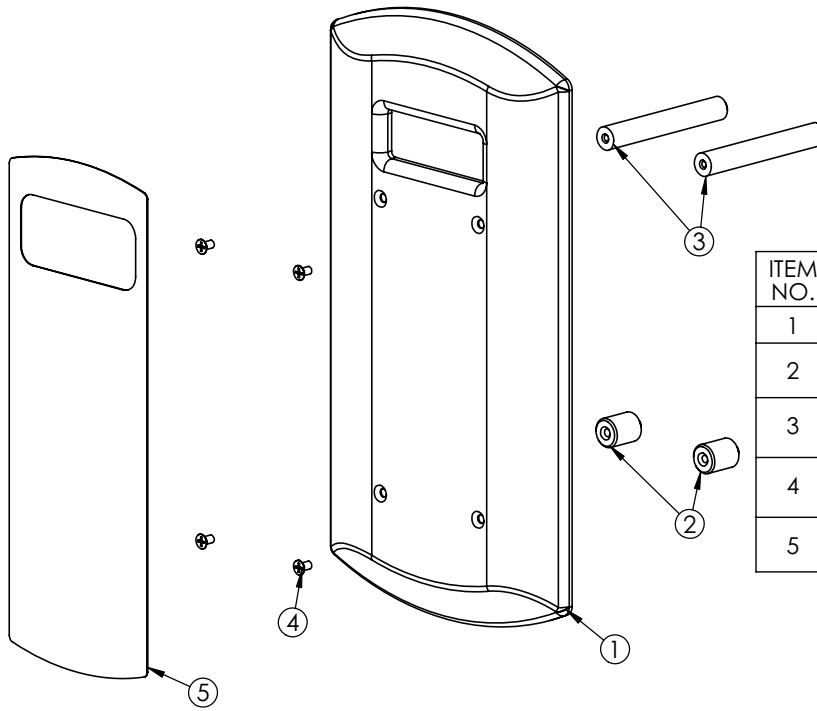
| ITEM NO. | PART NUMBER | Default/ QTY | DESCRIPTION         |
|----------|-------------|--------------|---------------------|
| 3        | 50522-05    | 1            | Grid, LCD drip tray |
| 4        | 62248       | 1            | TRAY, DRIP          |
| 5        | 50521-05    | 1            | Drip tray bracket   |

## Models LCD-2A & LCD-2R BIB Support Bracket Sub-Assembly



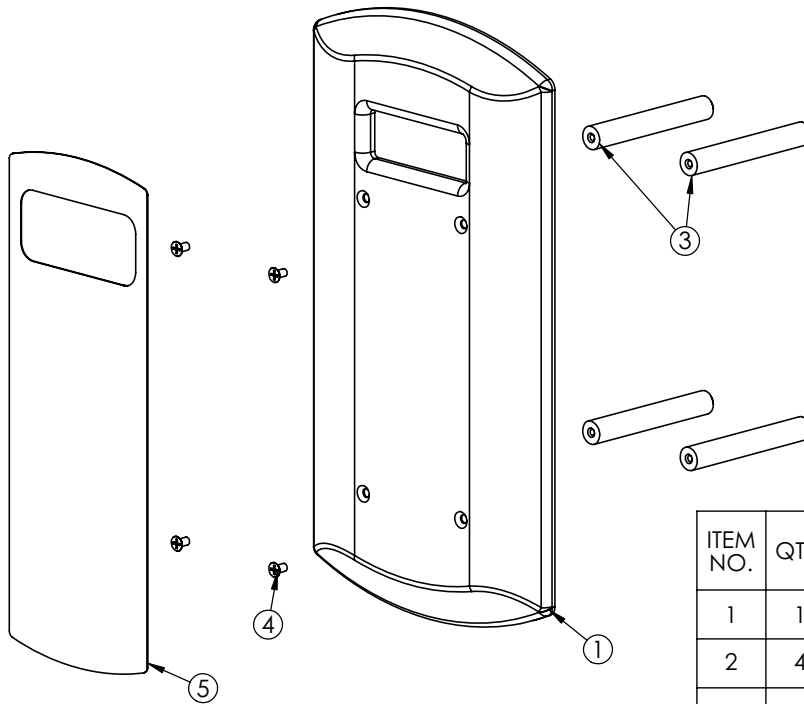
| ITEM NO. | PART NUMBER | QTY. | Description  |
|----------|-------------|------|--|
| 1        | 50120-05    | 1    | BIB support bracket                                |
| 2        | 63135       | 1    | Thumbscrew, 8-32                                   |
| 3        | 63607       | 1    | Thread retainer, 8-32 Micro plastics #16FWRT008032 |

## Model LCD-2A Door Bezel Assembly



| ITEM NO. | QTY. | PART NUMBER | DESCRIPTION                               |
|----------|------|-------------|---|
| 1        | 1    | 50052-05    | Bezel, LCD door                           |
| 2        | 2    | 50069-05    | Pillar, Short Door Bezel                  |
| 3        | 2    | 50068-05    | Pillar, Long Door Bezel                   |
| 4        | 4    | 10001-092   | Screw, 8-32 x 5/16" Flat Head Phillips SS |
| 5        | 1    | 50074-05    | Decal, LCD Door Bezel                     |

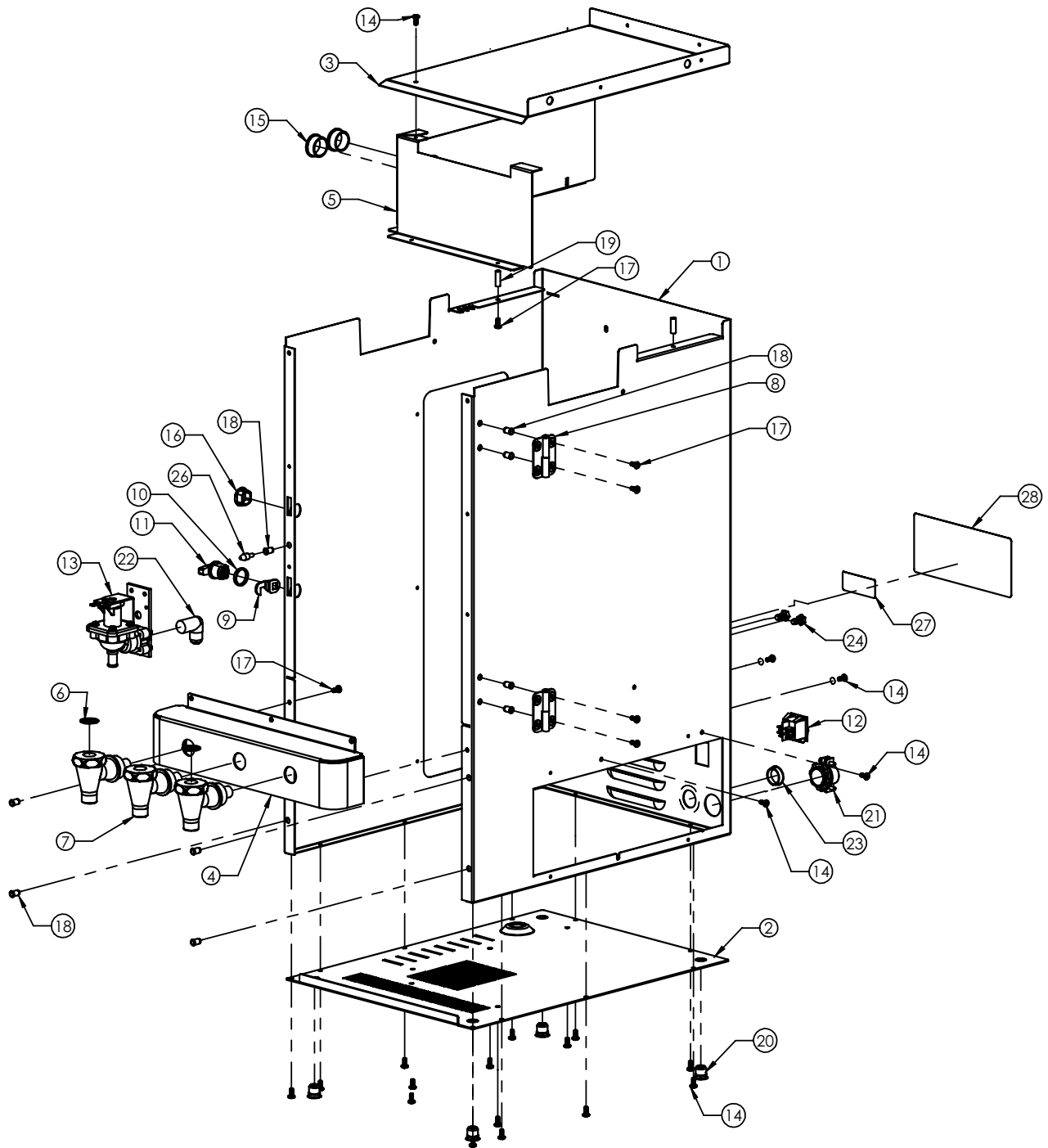
## Model LCD-2R Door Bezel Assembly



| ITEM NO. | QTY. | PART NUMBER | DESCRIPTION                               |
|----------|------|-------------|---|
| 1        | 1    | 50052-05    | Bezel, LCD door                           |
| 2        | 4    | 50068-05    | Pillar, Long Door Bezel                   |
| 3        | 4    | 10001-092   | Screw, 8-32 x 5/16" Flat Head Phillips SS |
| 4        | 1    | 50074-05    | Decal, LCD Door Bezel                     |

# Models LCD-2A & LCD-2R Casing Assembly

refer to page 15



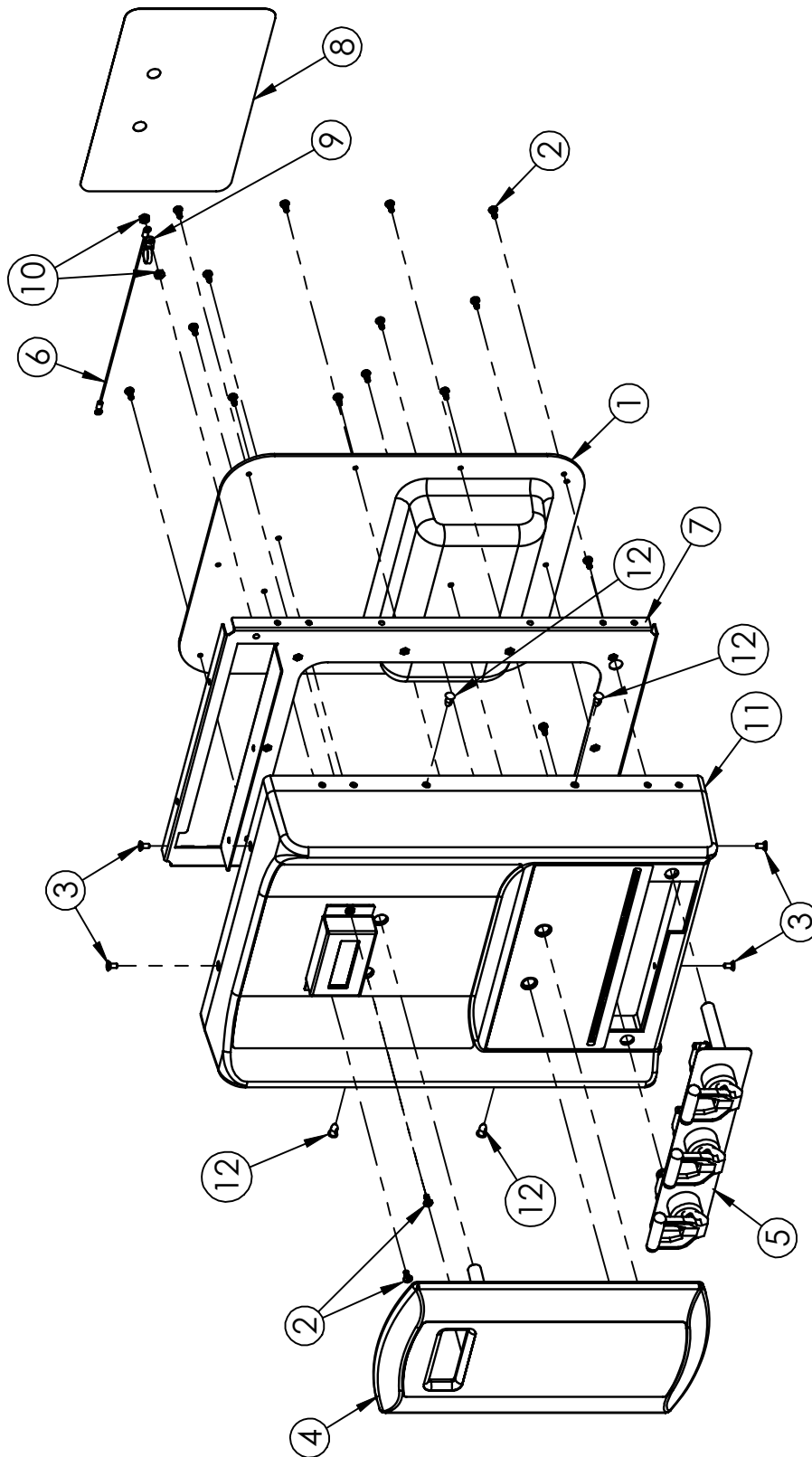
## Models LCD-2A & LCD-2R Casing Assembly

refer to page 14

| ITEM NO. | PART NUMBER | QTY. | DESCRIPTION                                      |
|----------|-------------|------|--|
| 1        | 63628       | 1    | Casing, LCD-2A&R                                 |
| 2        | 52221-05    | 1    | Enter Title                                      |
| 3        | 50403-05    | 1    | Tank support bracket assembly                    |
| 4        | 50212-05    | 1    | Plate, Dispense nozzle mounting                  |
| 5        | 50404-05    | 1    | Housing, power supply                            |
| 6        | 63661       | 2    | Difuser,Sht Metal-LCD Spout                      |
| 7        | 63228       | 3    | Faucet Coffee/Water FDD2500                      |
| 8        | 61792       | 2    | HINGE, PWDR COATED SS 2 LEAF                     |
| 9        | 63618       | 1    | Cam,Straight,Hook,0.883                          |
| 10       | 62219       | 1    | Spacer, Key Lock                                 |
| 11       | 100115      | 1    | Latch,Thumb                                      |
| 12       | 99066       | 1    | Switch,Power                                     |
| 13       | 62297       | 1    | Inlet valve                                      |
| 14       | 61303       | 20   | Screw, #8 x 3/8 black trilobe                    |
| 15       | 60382       | 2    | Bushing, Snap 1" Heyco 2140                      |
| 16       | 61751       | 1    | Plug, Hole, .75x.625 DD                          |
| 17       | 07026-07    | 8    | SCRW, 8-32 X 3/8 PH PN SS                        |
| 18       | 82096       | 9    | Rivnut, 8-32 AKS4-832-80                         |
| 19       | 63662       | 2    | Spacer, 1/4OD x 0.75L x 8-32                     |
| 20       | 60380       | 4    | RIVNUT, 3/8-16, ALS4-616-150.<br>Fastenal #60380 |
| 21       | 07920       | 1    | Connector, 3/4 Conduit Metal<br>Romex            |
| 22       | 62298       | 1    | Fitting 3/8mfl x 3/8nptm                         |
| 23       | W0630503    | 1    | Hole plug, 7/8" Heyco                            |
| 24       | 60012       | 2    | BOLT, 1/4-20X1/2 HXHD                            |
| 25       | 07327-01    | 1    | Clamp,Hose,#2318,.531-.593                       |
| 26       | 50064-05    | 1    | Guide Pin, Door                                  |
| 27       | 71151       | 1    | Decal,Plumbing Compliance                        |
| 28       | 61319       | 1    | Decal,Caution                                    |

# Model LCD-2A Door Assembly with Pull Switches

refer to page 17



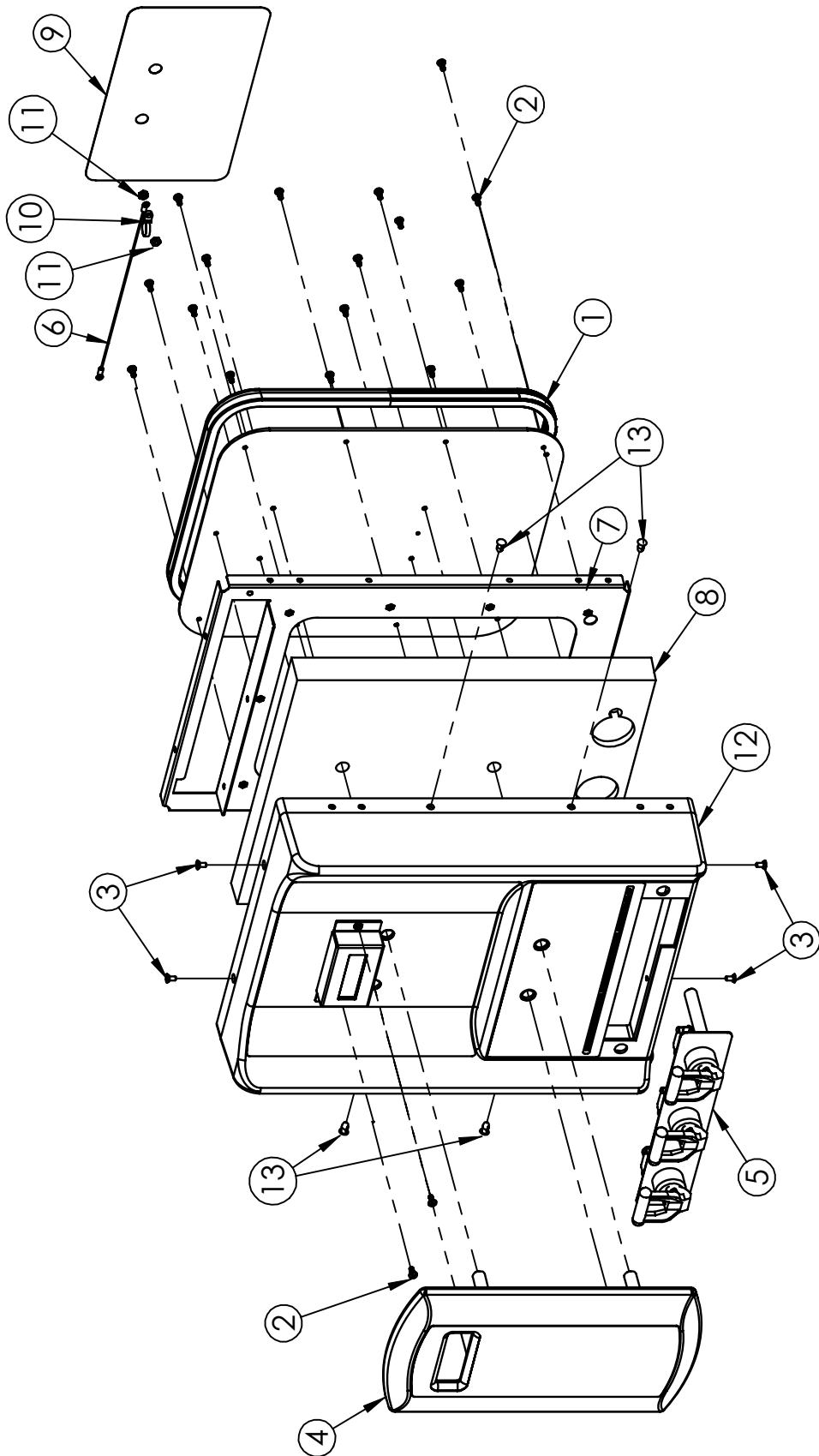
## Model LCD-2A Door Assembly with Pull Switches

refer to page 16

| ITEM NO. | Ambient cabinet | PART NUMBER | DESCRIPTION                               |
|----------|-----------------|-------------|---|
| 1        | 1               | 50122-04    | Door gasket panel sub-assembly            |
| 2        | 18              | 07026-07    | SCRW, 8-32 X 3/8 PH PN SS                 |
| 3        | 4               | 71177       | SCREW,8-32x3/8 PH FL HD M/S UNDRCT 18-8SS |
| 4        | 1               | 50052-04    | Bezel Assembly, LCD door                  |
| 5        | 1               | 63605       | Touchpad plate assembly, LCD              |
| 6        | 1               | 50351-04    | Harness, LCD Earth door to PCB            |
| 7        | 1               | 52216-05    | Frame, LCD-2A&R door                      |
| 8        | 1               | 63630       | Decal, LCD cleaning                       |
| 9        | 1               | 63631       | Tie,Wire,Nylon,T18R                       |
| 10       | 2               | 71129       | NUT, 8-32 KEPS SS                         |
| 11       | 1               | 50051-04    | Door sub-assembly, LCD                    |
| 12       | 4               | 63654       | Clip, Arrow 0.213 hole                    |

# Model LCD-2R Door Assembly with Pull Switches

refer to page 19

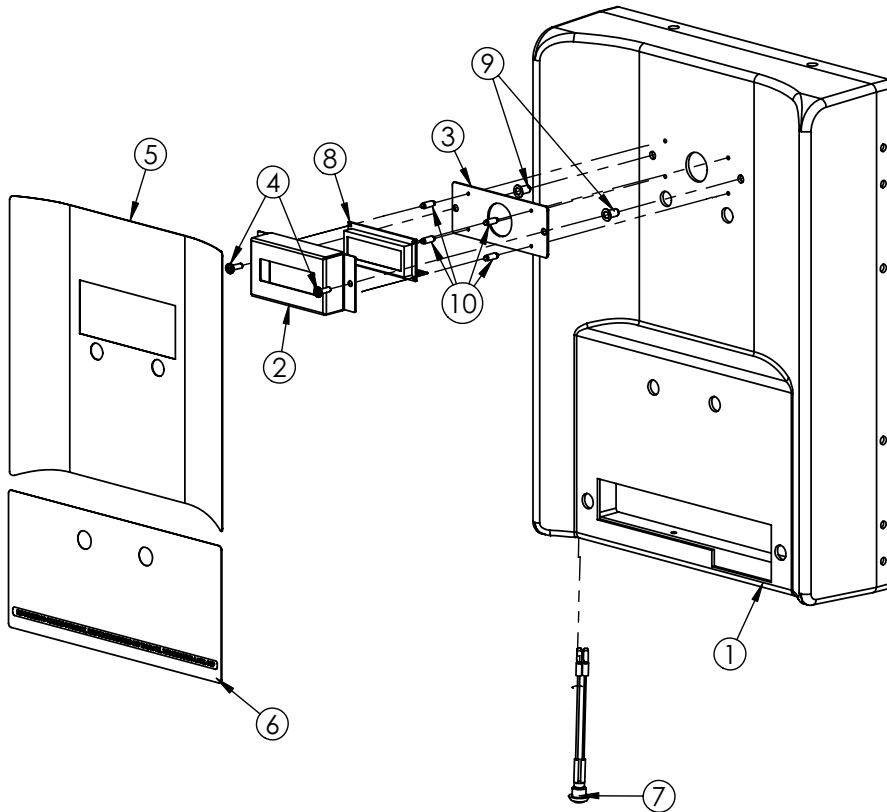


## Model LCD-2R Door Assembly with Pull Switches

refer to page 18

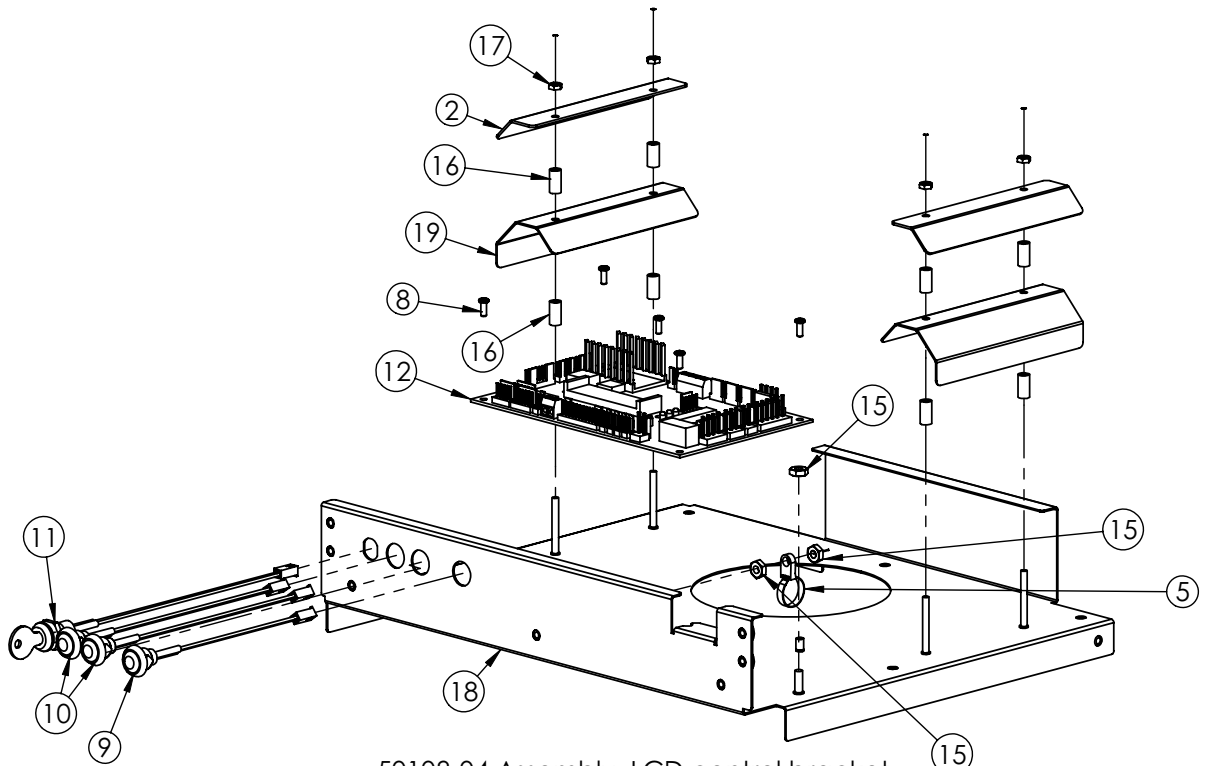
| ITEM NO. | Cooled cabinet /QTY. | PART NUMBER | DESCRIPTION                                |
|----------|----------------------|-------------|--|
| 1        | 1                    | 50122-04    | Door gasket panel sub-assembly             |
| 2        | 18                   | 07026-07    | SCRW, 8-32 X 3/8 PH PN SS                  |
| 3        | 4                    | 71177       | SCREW, 8-32x3/8 PH FL HD M/S UNDRCT 18-8SS |
| 4        | 1                    | 50052-04    | Bezel Assembly, LCD door                   |
| 5        | 1                    | 63605       | Touchpad plate assembly, LCD               |
| 6        | 1                    | 50351-04    | Harness, LCD Earth door to PCB             |
| 7        | 1                    | 52216-05    | Frame, LCD-2A&R door                       |
| 8        | 1                    | 52111-05    | Insulation, LCD door                       |
| 9        | 1                    | 63630       | Decal, LCD cleaning                        |
| 10       | 1                    | 63631       | Tie, Wire, Nylon, T18R                     |
| 11       | 2                    | 71129       | NUT, 8-32 KEPS SS                          |
| 12       | 1                    | 50051-04    | Door sub-assembly, LCD                     |
| 13       | 4                    | 63654       | Clip, Arrow 0.213 hole                     |

## Models LCD-2A & LCD-2R Door Sub-Assembly



| BOM Table |      |             |                                 |
|-----------|------|-------------|---------------------------------|
| ITEM NO.  | QTY. | PART NUMBER | DESCRIPTION                     |
| 1         | 1    | 52051-05    | Door, LCD molded                |
| 2         | 1    | 50066-05    | Cover, LCD display              |
| 3         | 1    | 63655       | Display mounting plate          |
| 4         | 2    | 07044-02    | Screw, 8-32 PH Pan Head 18-8 SS |
| 5         | 1    | 50075-05    | Decal, LCD Door                 |
| 6         | 1    | 50076-05    | Decal, LCD door lower           |
| 7         | 1    | 50344-04    | Switch assembly, LCD override   |
| 8         | 1    | 50345-04    | Harness, LCD display            |
| 9         | 2    | 63633       | Rivnut, ALA1-832-130 (Aluminum) |
| 10        | 4    | 63656       | Standoff, 10mm x 2.5mm hole     |

## Models LCD-2A & LCD-2R Control Bracket

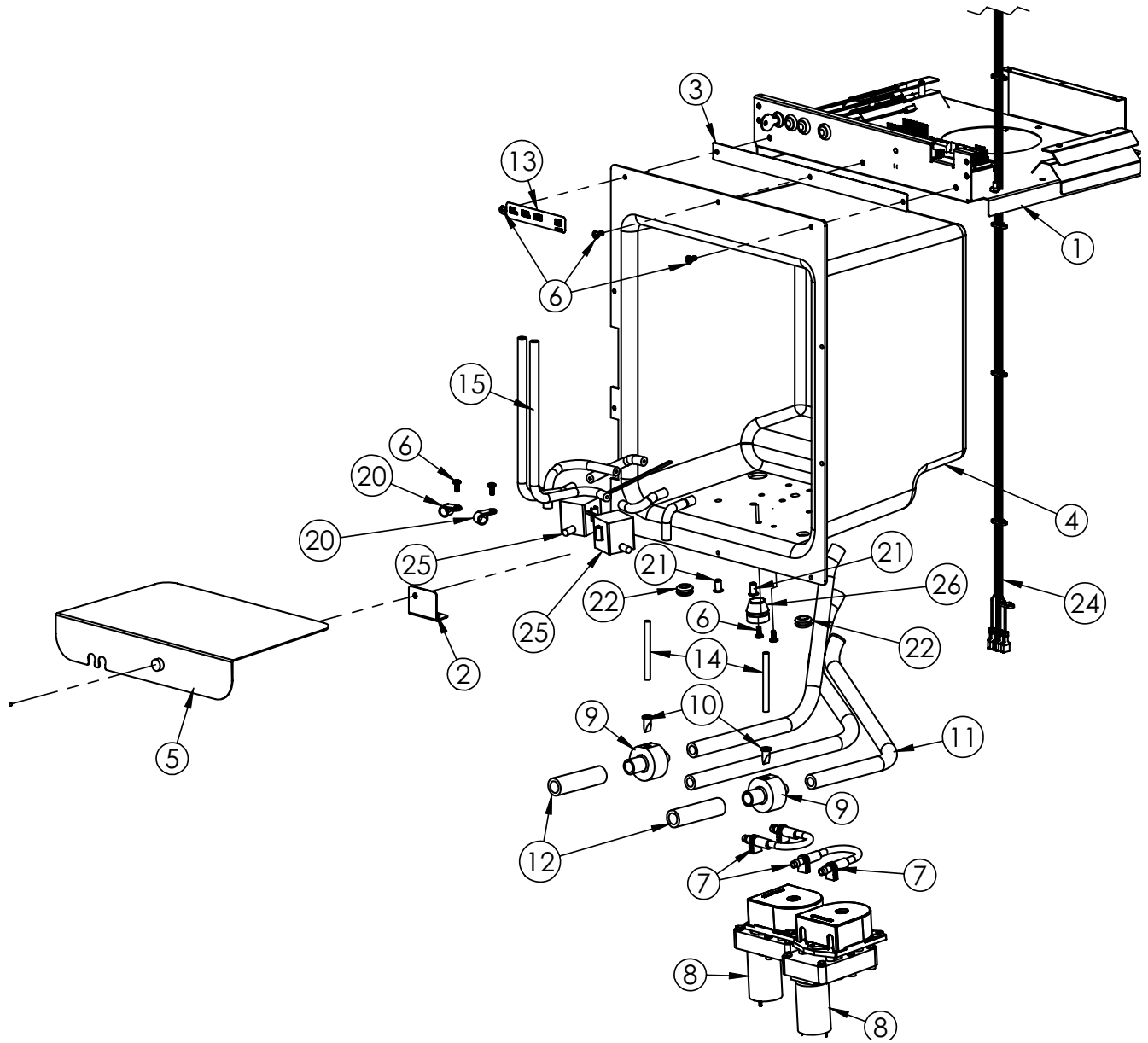


50108-04 Assembly, LCD control bracket

| ITEM NO. | PART NUMBER | QTY. | DESCRIPTION                               |
|----------|-------------|------|---|
| 18       | 52108-05    | 1    | Bracket, LCD control                      |
| 2        | 52081-05    | 2    | Upper vane                                |
| 19       | 52080-05    | 2    | Lower vane                                |
| 5        | 63631       | 1    | Tie, Wire, Nylon, T18R                    |
| 8        | 10004-505   | 6    | Screw, 4-40 x 5/16 Pan Phillips Head SS   |
| 9        | 50340-04    | 1    | Harness, Flush switch                     |
| 10       | 50339-04    | 2    | Harness, Prime switch                     |
| 11       | 50338-04    | 1    | Harness, Programming keyswitch            |
| 12       | 50300-05    | 1    | Control board, LCD-2A &R                  |
| 15       | 71129       | 3    | NUT, 8-32 KEPS SS                         |
| 16       | 63580       | 8    | Spacer, #4 ID x 1/4" OD x 1/2" L Aluminum |
| 17       | 07206-06    | 4    | 6-32 STAINLESS STEEL NUT                  |

# Model LCD-2A Product Storage Cabinet

refer to page 23



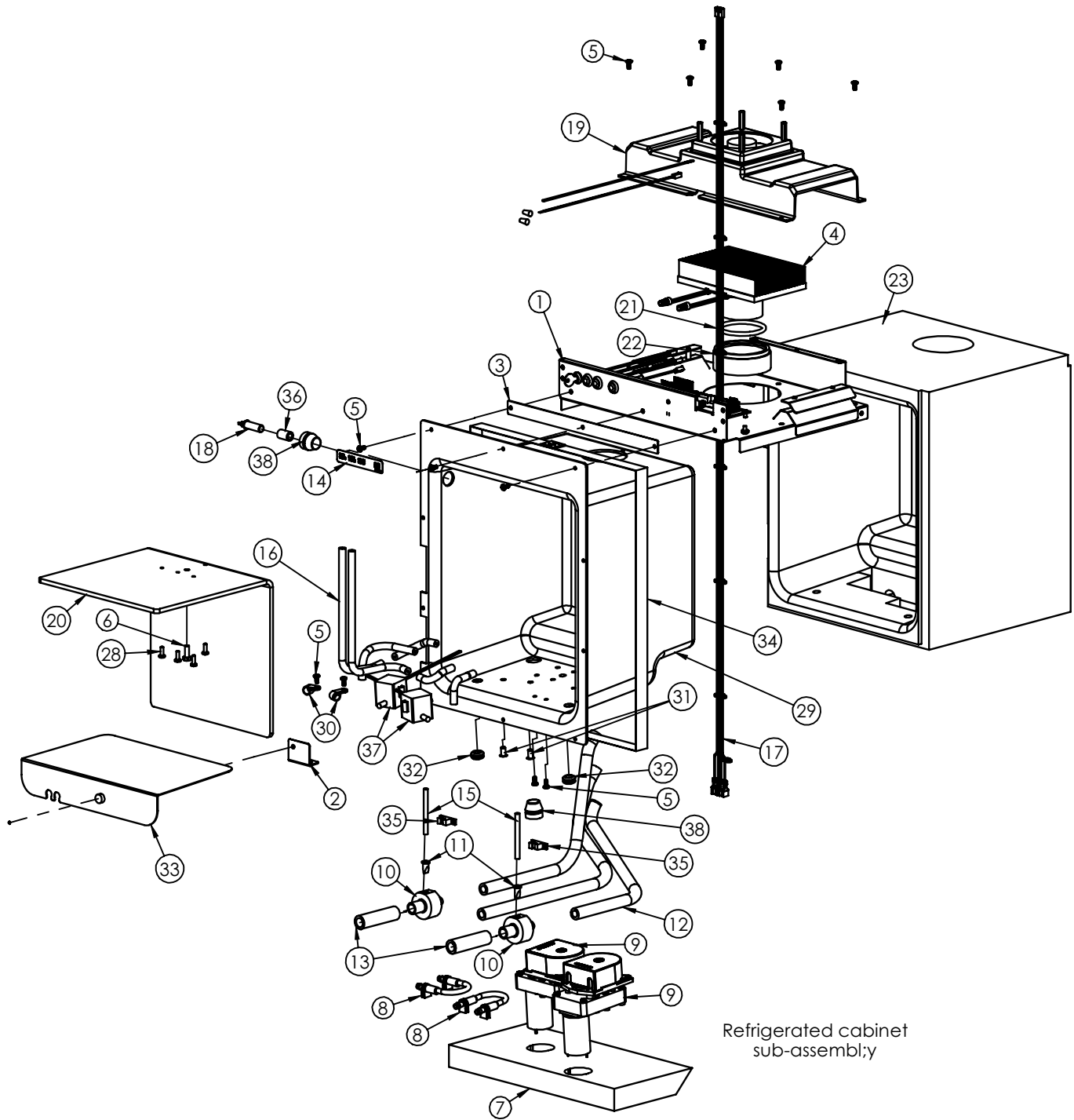
## Model LCD-2A Product Storage Cabinet

refer to page 22

| ITEM NO. | QTY. | PART NUMBER                          | DESCRIPTION                              |
|----------|------|--------------------------------------|--|
| 1        | 1    | 50108-04                             | Assembly, LCD control bracket            |
| 2        | 1    | 50119-05                             | Bracket, BIB support fastenting          |
| 3        | 1    | 50067-05                             | Bracket, cabinet spacer                  |
| 4        | 1    | 53101-05-B<br>(ambient cabinet)      | Cabinet, LCD ambient molded              |
| 5        | 1    | 63636                                | BIB support bracket sub-assembly         |
| 6        | 7    | 07026-07                             | SCRW, 8-32 X 3/8 PH PN SS                |
| 7        | 2    | 63541                                | Tube assembly, Autoclude pump            |
| 8        | 2    | 10028-05                             | Pump, 12vdc Autoclude peristaltic        |
| 9        | 2    | 50601-05                             | Mixing chamber, LCD                      |
| 10       | 2    | 63591                                | Check Valve, Vernay Silicone             |
| 11       | 1    | 05826_LCD-2<br>dispense tube lengths | Tubing cut lengths total_LCD dump valves |
| 12       | 2    | 62271-2.75"                          | Tube, LCD product                        |
| 13       | 1    | 63538                                | Decal, Programming                       |
| 14       | 2    | 63595                                | Tube, Optical sensor concentrate         |
| 15       | 1    | 63594_LCD<br>concentrate tubings     | LCD concentrate tubing cut lengths       |
| 16       | 1    | 50335-04                             | Harness, LCD pump                        |
| 17       | 1    | 50348-04                             | Harness,LCD tank thermistor              |
| 18       | 1    | 50336-04                             | Harness, Coffee vacuum switch            |
| 19       | 1    | 50337-04                             | Harness, Decaff vacuum switch            |
| 20       | 2    | 63634                                | Clamp,5/8"Nylon **SC**                   |
| 21       | 2    | 63633                                | Rivnut, ALA1-832-130<br>(Aluminum)       |
| 22       | 2    | 63632                                | Grommet, 9.5mm ID x 12.5mm hole          |
| 23       | 1    | 63546                                | BIB connector assemblies                 |
| 24       | 1    | 63657                                | Harness, Decaff vacuum switch            |
| 25       | 2    | 61991                                | Switch, NO vacuum                        |
| 26       | 1    | M462A                                | Grommet, Componenti 15mm silicone        |

# Model LCD-2R Product Storage Cabinet

refer to page 25



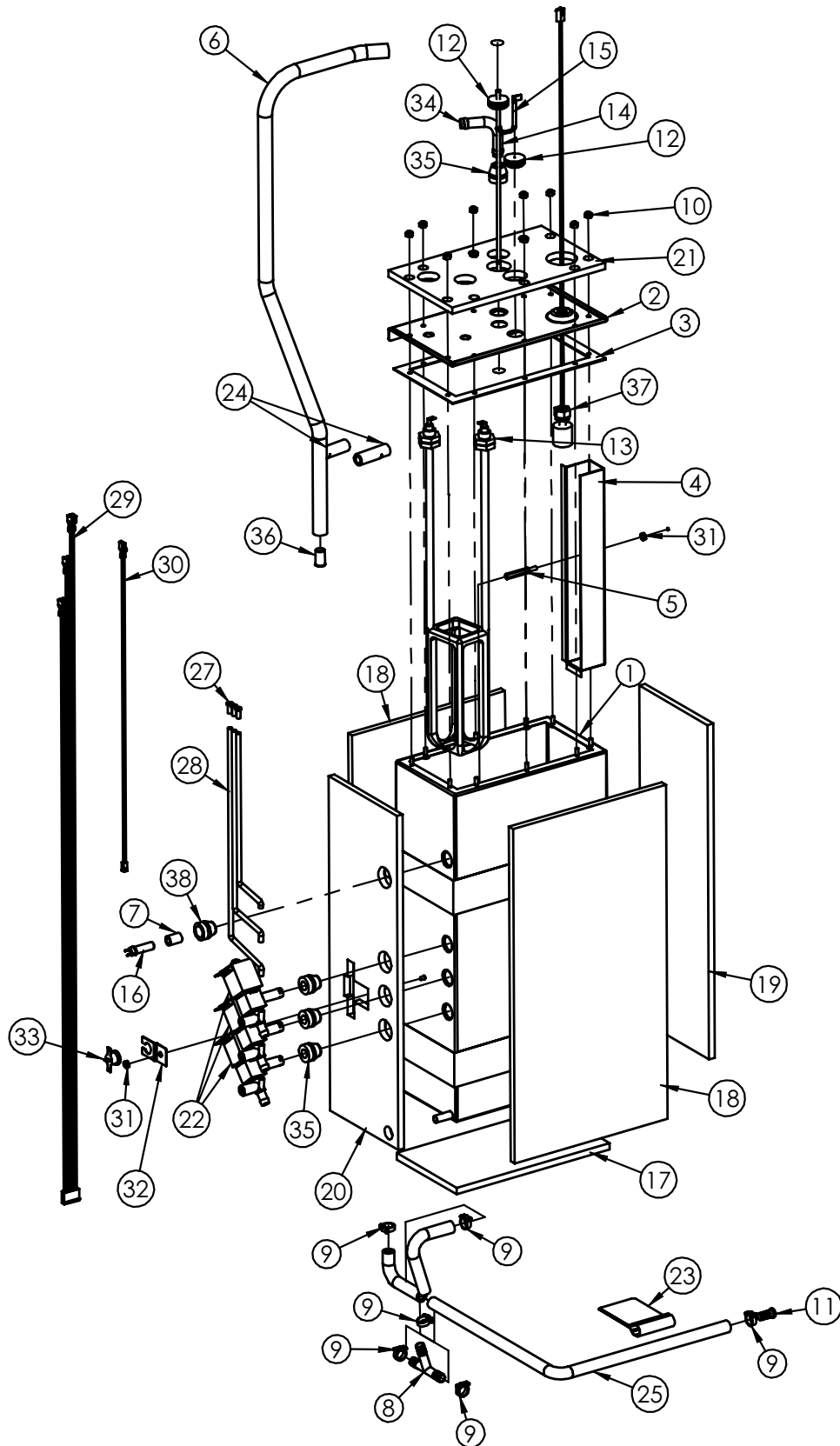
## Model LCD-2R Product Storage Cabinet

refer to page 24

| ITEM NO. | Qty. | PART NUMBER                       | DESCRIPTION                              |
|----------|------|-----------------------------------|--|
| 1        | 1    | 50108-04                          | Assembly, LCD control bracket            |
| 2        | 1    | 50119-05                          | Bracket, BIB support fastenting          |
| 3        | 1    | 50067-05                          | Bracket, cabinet spacer                  |
| 4        | 1    | 63612                             | Peltier sub-assembly                     |
| 5        | 13   | 07026-07                          | SCRW, 8-32 X 3/8 PH PN SS                |
| 6        | 1    | 10006-014                         | Bolt, Hex Head M6 x 16mm SS              |
| 7        | 1    | 50124-05                          | Insulation, Gearmotor                    |
| 8        | 2    | 63541                             | Tube assembly, Autoclude pump            |
| 9        | 2    | 10028-05                          | Pump, 12vdc Autoclude peristaltic        |
| 10       | 2    | 50601-05                          | Mixing chamber, LCD                      |
| 11       | 2    | 63591                             | Check Valve, Vernay Silicone             |
| 12       | 1    | 05826_LCD-2 dispense tube lengths | Tubing cut lengths total_LCD dump valves |
| 13       | 2    | 62271-2.75"                       | Tube, LCD product                        |
| 14       | 1    | 63538                             | Decal, Programming                       |
| 15       | 2    | 63595                             | Tube, Optical sensor concentrate         |
| 16       | 1    | 63594_LCD concentrate tubings     | LCD concentrate tubing cut lengths       |
| 17       | 1    | 63657                             | Harness, Decaff vacuum switch            |
| 18       | 1    | 50346-04                          | Assy, Cabinet Thermistor                 |
| 19       | 1    | 63613                             |  |
| 20       | 1    | 52109-05                          | Coldplate, LCD cabinet                   |
| 21       | 1    | 52127-05                          | O-ring, #2-331                           |
| 22       | 1    | 52129-05                          | Cold block spacer ring                   |
| 23       | 1    | 52102-05                          | Insulation, LCD refrigerated cabinet     |
| 24       | 1    | 50335-04                          | Harness, LCD pump                        |
| 25       | 1    | 50348-04                          | Harness,LCD tank thermistor              |
| 26       | 1    | 50336-04                          | Harness, Coffee vacuum switch            |
| 27       | 1    | 50337-04                          | Harness, Decaff vacuum switch            |
| 28       | 4    | 10004-034                         | Screw, M4 X 12 Phillips Pan Head         |
| 29       | 1    | 52101-05-A (refrigerated cabinet) | Cabinet, LCD ambient molded              |
| 30       | 2    | 63634                             | Clamp,5/8"Nylon **SC**                   |
| 31       | 2    | 63633                             | Rivnut, ALA1-832-130 (Aluminum)          |
| 32       | 2    | 63632                             | Grommet, 9.5mm ID x 12.5mm hole          |
| 33       | 1    | 63636                             | BIB support bracket sub-assembly         |
| 34       | 1    | 63637                             | Elastic band assembly                    |
| 35       | 2    | 52356-04                          | Assy, Tube sensor                        |
| 36       | 1    | 71155,0.75                        | Tube, 5/16"ID x 1/2" OD Silicone         |
| 37       | 2    | 61991                             | Switch, NO vacuum                        |
| 38       | 2    | M462A                             | Grommet, Componenti 15mm silicone        |

# Models LCD-2A & LCD-2R Hot Water Tank Components

refer to page 27



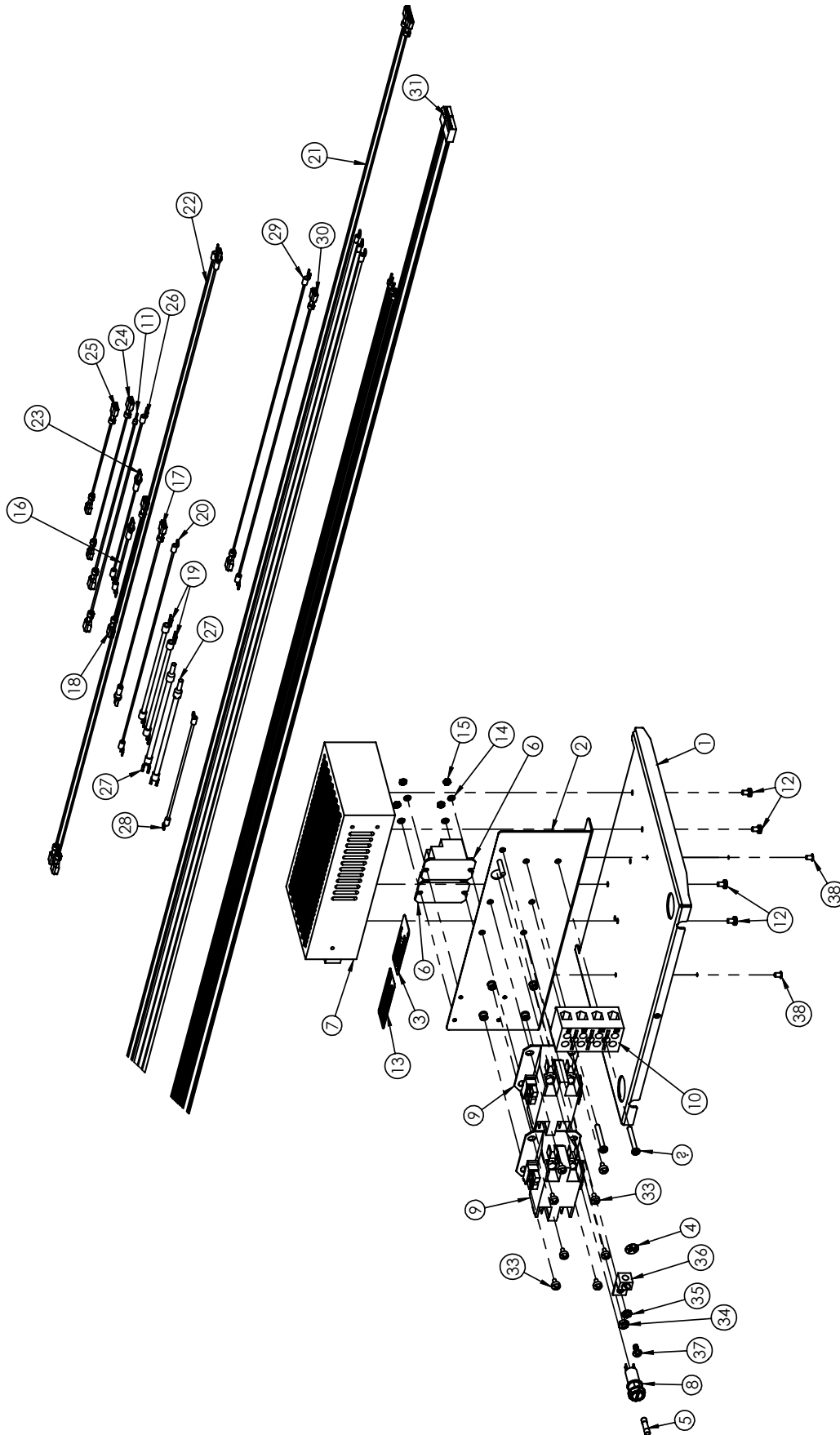
## Models LCD-2A & LCD-2R Hot Water Tank Components

refer to page 26

| ITEM NO. | QTY. | PART NUMBER                     | DESCRIPTION                                  |
|----------|------|---------------------------------|--|
| 1        | 1    | 50401-05                        | Water tank, LCD-2A&R                         |
| 2        | 1    | 50431-05                        | Cover, LCD-2A&R water tank                   |
| 3        | 1    | 50406-05                        | Gasket, LCD-2A&R water tank                  |
| 4        | 1    | 50421-05                        | Baffle, LCD-2A&R water tank                  |
| 5        | 1    | 50422-05                        | Spacer, water tank baffle                    |
| 6        | 1    | 62271_LCD vent tube             | Vent tube, LCD water tank_30" 62271          |
| 7        | 1    | 71155,0.75                      | Tube, 5/16"ID x 1/2" OD Silicone             |
| 8        | 1    | 61152                           | Tee, 7/16" Barbed                            |
| 9        | 6    | 07327-01                        | Clamp,Hose,#2318,.531-.593                   |
| 10       | 10   | 71261                           | NUT 8-32 SS WITH NYLON INSERT                |
| 11       | 1    | 61232                           | Plug,3/8 Barb                                |
| 12       | 2    | 71147                           | GROMMET, SILICONE WHT                        |
| 13       | 1    | 62265                           | Element 240V 6.6kW                           |
| 14       | 1    | 61128                           | Probe,Thermistor,12"                         |
| 15       | 1    | 61108                           | PROBE, PIC                                   |
| 16       | 1    | 50347-04                        | Assy, water tank dispense Thermistor         |
| 17       | 1    | 50411-05                        | Insulation, LCD water tank bottom            |
| 18       | 2    | 50412-05                        | Insulation, LCD-2A&R water tank front & back |
| 19       | 1    | 50413-05                        | Insulation, LCD-2A&R water tank side         |
| 20       | 1    | 50414-05                        | Insulation, LCD-2A&R water tank side         |
| 21       | 1    | 50415-05                        | Insulation, LCD-2A&R water tank              |
| 22       | 3    | 10039-339                       | Valve, Componenti 12vdc dump                 |
| 23       | 1    | 61325                           | Decal,Tank Drain Hose                        |
| 24       | 2    | 05826_Heater terminal insulator | Heater terminal insulator                    |
| 25       | 1    | 05826_LCD fill tube cut lengths | Tubing,3/8IDx1/8WL,Silicone                  |
| 26       | 2    | 60262_LCD tank insulation tape  | Tape, LCD tank insulation_40" BOM            |
| 27       | 3    | 10016-210                       | #8 screw insulator                           |
| 28       | 1    | 10025-002_LCD dump valve vent   | Tubing, LCD vent cut lengths                 |
| 29       | 1    | 50332-04                        | Harness, LCD dump valve                      |
| 30       | 1    | 50349-04                        | Harness, Level probe                         |
| 31       | 2    | 71129                           | NUT, 8-32 KEPS SS                            |
| 32       | 1    | 63652                           | Bracket, Thermostat mounting                 |
| 33       | 1    | A536-023                        | Thermostat, Manual reset 105C cutout         |
| 34       | 1    | K525Q                           | Fitting, 1/2" Elbow with tab                 |
| 35       | 4    | M461A                           | Grommet, Componenti 8mm silicone             |
| 36       | 1    | 63660                           | TUBE SUPPORT, 5/8 BRASS                      |
| 37       | 1    | 63658                           | Float switch assembly                        |
| 38       | 1    | M462A                           | Grommet, Componenti 15mm silicone            |

# Models LCD-2A & LCD-2R Power Supply Assembly

refer to page 29



## Models LCD-2A & LCD-2R Power Supply Assembly

refer to page 28

| ITEM NO. | QTY. | PART NUMBER | DESCRIPTION                                    |
|----------|------|-------------|--|
| 1        | 1    | 50311-05    | Bracket, Power supply mounting                 |
| 2        | 1    | 52313-05    | Bracket, Contactor mounting                    |
| 3        | 1    | 62327       | Decal, 10 AWG supply connections               |
| 4        | 1    | 10073       | Label, Ground Symbol                           |
| 5        | 1    | 63590       | Fuse, 5A 5/ 20mm time delay                    |
| 6        | 2    | 61131       | Relay, 12 vdc Coil                             |
| 7        | 1    | 10012-007   | Power supply, 12vdc 150W universal             |
| 8        | 1    | 10040-568   | Fuseholder, Slotted panel mount                |
| 9        | 2    | 62261       | Contactora DPST 30A 120V                       |
| 10       | 1    | 62262       | Terminal Block 4-pole                          |
| 11       | 1    | 52327-04    |  |
| 12       | 4    | 10004-031   | Screw, M4 x 6 Pan Phillips head SS             |
| 13       | 1    | 63592       | Decal, 5A fuse replacement                     |
| 14       | 4    | 86893       | Washer, #4 Zinc plated                         |
| 15       | 4    | 71128       | Nut, 4-40 SS Hex                               |
| 16       | 1    | 52321-04    | Loom, Live to element relay                    |
| 17       | 1    | 52354-04    | Harness, 2nd contactor to 2nd relay            |
| 18       | 1    | 52353-04    | Harness, Contactor to contactor                |
| 19       | 2    | 52352-04    | Harness, contactor to contactor                |
| 20       | 1    | 52331-04    | Harness, PSU to earth                          |
| 21       | 1    | 52330-04    | Harness, Element to 1 phase                    |
| 22       | 1    | 52329-04    | Harness, PSU neutral to inlet valve coil assy  |
| 23       | 1    | 52328-04    | Harness, PSU live to inlet relay               |
| 24       | 1    | 52326-04    | Harness, Fuse live to switch                   |
| 25       | 1    | 52325-04    | Harness, LCD contactor live to fuse            |
| 26       | 1    | 52323-04    | Harness, LCD neutral to contactor              |
| 27       | 2    | 50320-04    | Wire assembly, LCD Contactor to terminal block |
| 28       | 1    | 50350-04    | Harness, LCD PSU Ground                        |
| 29       | 1    | 50322-04    | Harness, Switch live to PSU                    |
| 30       | 1    | 50324-04    | Harness, LCD switch neutral to PSU             |
| 31       | 1    | 50333-04    | Harness, LCD PSU to Control PCB                |
| 32       | 2    | 10004-507   | Screw, 8-32 x 1 1/4" Pan Phillips SS           |
| 33       | 8    | 61353       | Screw, 8-32 X 1/4" PH PN 18-8 SS               |
| 34       | 1    | 71129       | NUT, 8-32 KEPS SS                              |
| 35       | 1    | 61187       | Washer, #8 Star Lock                           |
| 36       | 1    | 07921       | Lug Ground                                     |
| 37       | 1    | 07026-07    | SCRW, 8-32 X 3/8 PH PN SS                      |
| 38       | 2    | 07348-01    |  |

# Models LCD-2A & LCD-2R Packaging Components

63597  
Key,  
Replacement  
APEM JD  
Programming  
keyswitch #A126

62454  
H2007 Key-  
Chicago  
Keylock

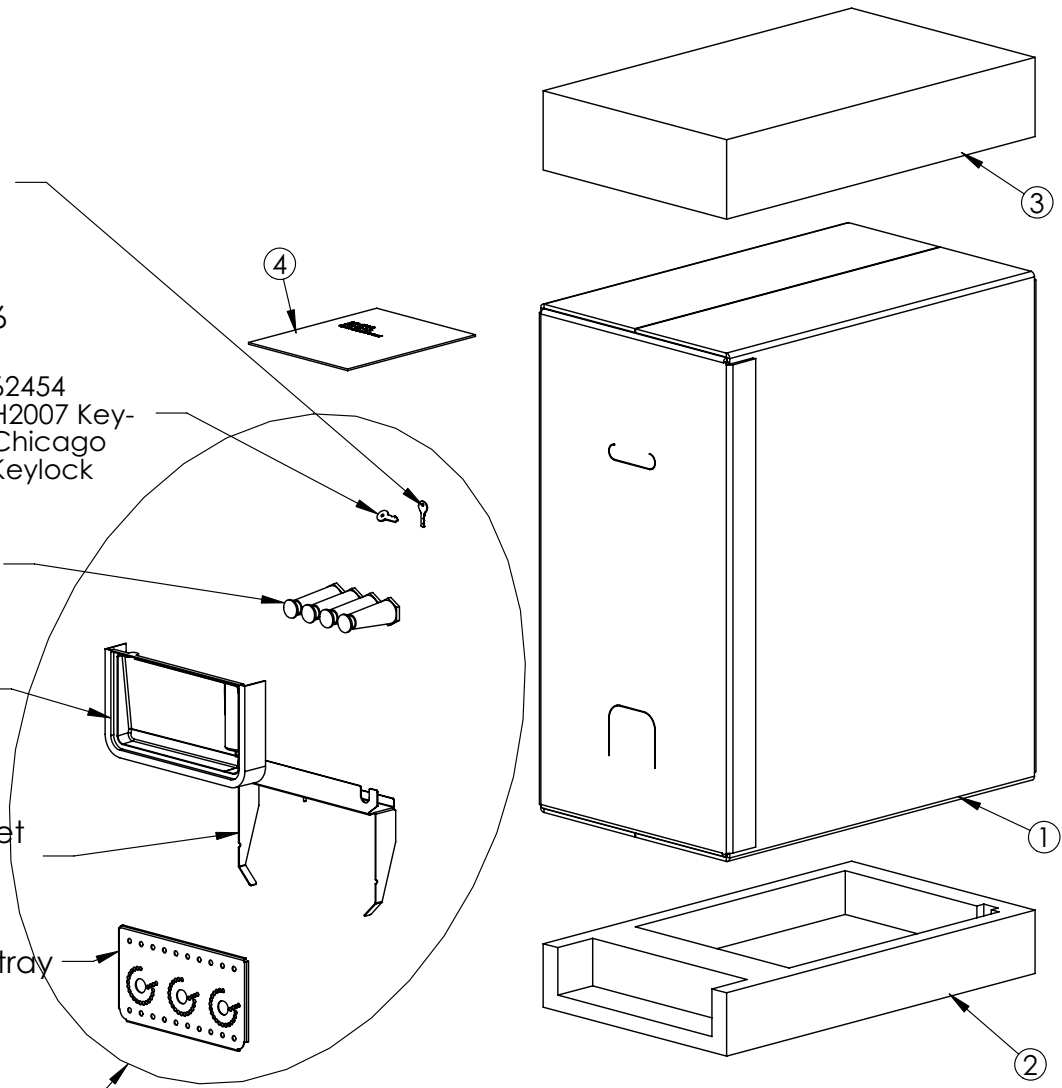
71256\_four  
pack  
Enter Title

62248  
TRAY, DRIP

50521-05  
Drip tray bracket

50522-05  
Grid, LCD drip tray

Packaged parts  
(not applied to BOM)



| ITEM NO. | Qty | PART NUMBER | DESCRIPTION                   |
|----------|-----|-------------|-------------------------------|
| 1        | 1   | 61238       | Carton,                       |
| 2        | 1   | 63604       | Cushion, LCD bottom packaging |
| 3        | 1   | 63603       | Cushion, LCD top packaging    |
| 4        | 1   | 63543       | Manual, LCD-2A&R Operators    |
| 5        | 1   | 62248       | TRAY, DRIP                    |

## Notes

# Grindmaster-Cecilware Corporation™

## Product Warranty for USA

Effective January 1, 2010

New machines that have been manufactured by or for Grindmaster-Cecilware Corporation and all parts thereof are conditionally\* warranted to the original user by Grindmaster-Cecilware Corporation to be free from defects in material and workmanship (existing at the time of manufacture and appearing during the stated warranty period) under normal use and service as follows:

### All Equipment unless specified otherwise below: 1 year parts and 1 year labor

|  |   |   |
|--|---|---|
| <b>Crathco® Barrel Style Freezers</b><br>1 year parts<br>1 year labor<br>5 years compressor parts            | <b>Micro-Controller based boards (except Granita and Crathco® Barrel Style Freezers and PIC)</b><br>3 years parts<br>1 year labor   | <b>PrecisionBrew™ Coffee Brewers and Space Saver Urns</b><br>2 years parts<br>2 years labor                   |
| <b>G-Cool/Crathco® Classic Premix Dispensers</b><br>1 year parts<br>1 year labor<br>5 years compressor parts | <b>All Grinding Burrs on coffee grinding equipment manufactured by Grindmaster-Cecilware (does not include espresso grinders)</b><br>4 years parts (or 30,000 lbs. of coffee - whichever comes first)<br>1 year labor | <b>Urn Body and Liners</b><br>3 years part  |
| <b>Ugolini Cold Beverage Dispensers</b><br>1 year parts<br>90 days labor                                     | <b>AVS/VS Vacuum Shuttles®, Classic CS-1 Shuttle®, and CW-1 Warmer</b><br>1 year parts  | <b>PrecisionBrew™ Pod Brewers</b><br>Model OPOD: 1 year replacement<br>Model GPOD: 1 year replacement         |
| <b>Powdered Beverage Dispensers</b><br>2 years parts<br>1 year labor   |   | <b>Grindmaster-Cecilware Accessories (does not include glass decanters and Airpots)</b><br>90 days parts only |

During these warranty periods, Grindmaster-Cecilware Corporation will at its option (and after inspection), repair or replace a defective unit with no charge for parts or bench labor during the applicable parts or labor warranty period, respectively. Grindmaster-Cecilware Corporation's obligation under these warranty periods shall be limited to repairing or replacing any part of said dispenser (excluding plastic parts, rubber parts, light bulbs or normal wear items), which proves defective within the warranty period. These warranty periods run from the date of installation (proof of installation date required) if within 6 months of ship date, or if no proof of installation is provided the warranty start date is the original ship date of the equipment. Travel is covered up to 50 miles or 1 hour, whichever comes first. Labor does not include the cost of shipping to or from the service station or factory.

\*This warranty is subject to the following conditions, terms and exclusions (for a detailed list see Warranty Explanation):

- Warranty does not apply to machines or any part thereof which have been subject to any accident, abuse, misuse, neglect, alteration, use on incorrect voltage, improper ventilation, damage caused in transit, improper installation or operation, improper maintenance or repair, normal wear items, plastic or rubber parts, poor water conditions, machine adjustments, temporary non-functioning conditions, fire, flood or acts of God;
- Warranty is in lieu of all other warranties expressed or implied. In no event shall Grindmaster-Cecilware Corporation be liable for consequential or incidental damages.
- The model and serial number of the unit (shown on the serial plate) shall be supplied to the service station or factory along with the defective parts of the unit.
- Upon request by Grindmaster-Cecilware Corporation, some warranty parts, (including but not limited to: motors, compressors, micro controlled based boards, gear motors, and burrs) shall be shipped prepaid to the Grindmaster-Cecilware Factory Service Center designated in the RGA confirmation. Upon receipt, Grindmaster-Cecilware Corporation will inspect parts to verify warranty claim is valid. Replacement parts will be billed out when shipped, and then credited on return of a part that is proven to be a valid warranty claim upon inspection by Grindmaster-Cecilware Corporation. Warranty labor will not be paid until warranty claim parts are received and validated by Grindmaster-Cecilware Corporation.
- The buyer shall give prompt notice to Grindmaster-Cecilware Corporation, and must obtain prior authorization from Grindmaster-Cecilware Corporation, for any claim to be made under said warranty via telephone at (800-695-4500) or writing to P.O. Box 35020, Louisville, KY 40232-5020.
- Upon request by Grindmaster-Cecilware Corporation, the defective equipment shall be shipped prepaid to the Grindmaster-Cecilware Factory Service Center designated in the RGA confirmation, or, if requested by Grindmaster-Cecilware Corporation, to an authorized Grindmaster-Cecilware service location.
- No field (including travel), outside or service station work is covered by this warranty without prior authorization by the Grindmaster-Cecilware Service Department.**

The dealers, distributors, employees and agents of Grindmaster-Cecilware Corporation are not authorized to modify this warranty or to add warranties that are binding to Grindmaster-Cecilware Corporation. Neither written nor oral statements by such individuals establish warranties and thus should not be relied upon. This will establish your warranty rights. The purchaser's redress against Grindmaster-Cecilware Corporation for the breach of any obligation arising from the sale of this equipment, whether derived from warranty or elsewhere, shall be limited to repair, replacement or refund at Grindmaster-Cecilware Corporation's discretion.



**GRINDMASTER™**  
CORPORATION

Tel (502) 425-4776 • Fax (502) 425-4664 • 1-800-695-4500 (USA & Canada only)

P.O. Box 35020 • Louisville, KY 40232 • USA

www.grindmaster.com • email: info@grindmaster.com