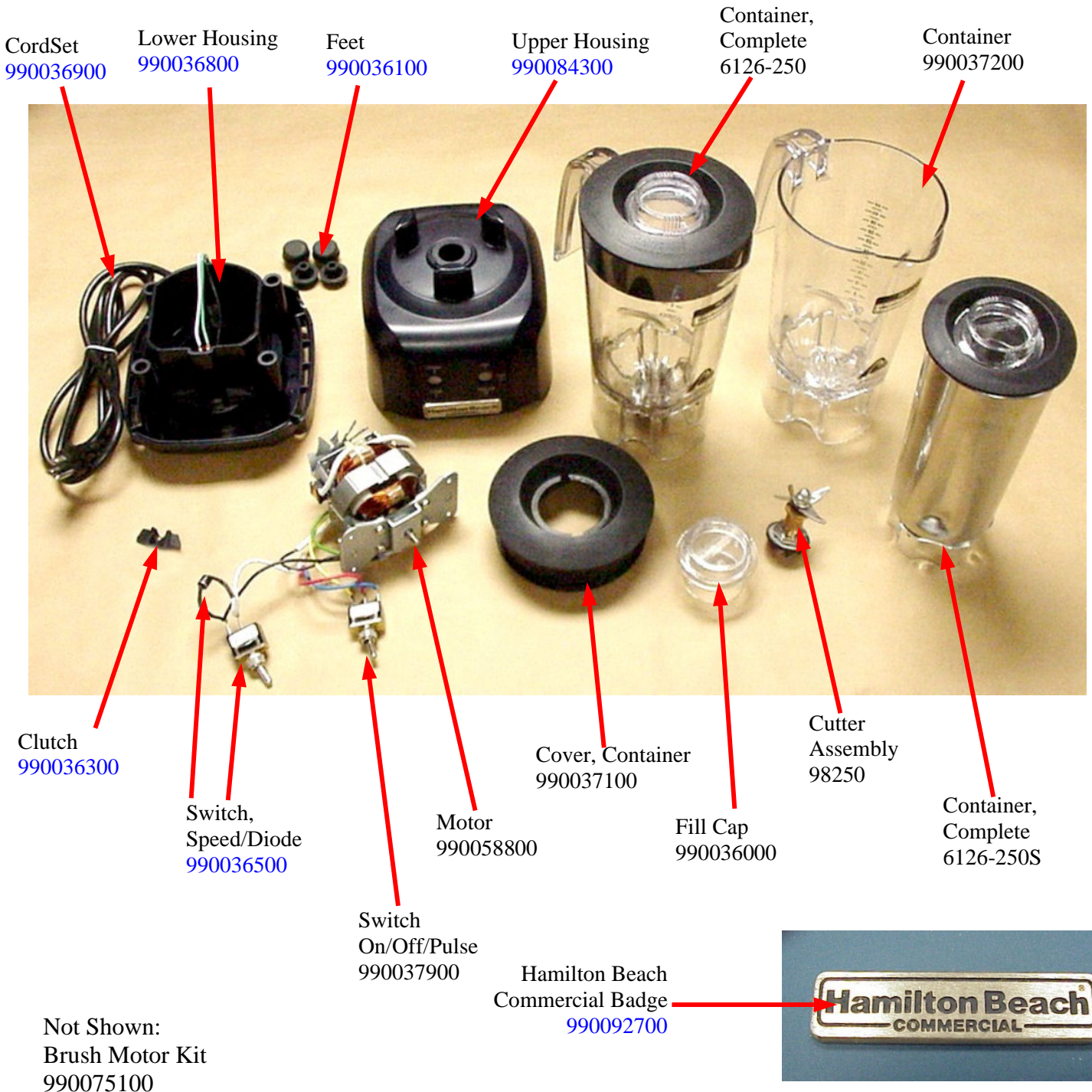


## Replacement Parts Diagram


### Model HBB250 (Series A-C & HBB250R (Series A-D))

**PROPRIETARY RIGHTS NOTICE** This document and all information contained within it is the property of Hamilton Beach Brands, Inc. (HBB). It is confidential and proprietary and has been provided to you for a limited purpose. It must be returned or destroyed upon request. Disclosure, reproduction or use of this document and any information contained within it, in full or in part, for any purpose is forbidden without the prior written consent of HBB. No photographs may be taken of any article fabricated or assembled from this document without the prior written consent of HBB.



Not Shown:  
Brush Motor Kit  
990075100



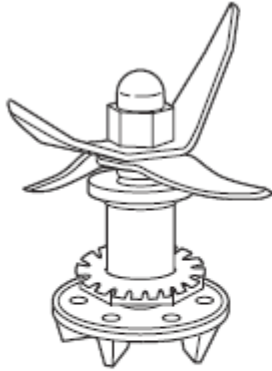
 4421 Waterfront Drive Glen Allen, VA 23060	Revision Description:	Changed upper housing part number				
	Request Number:	CME-2736	Revision Date:	11/23/09	Approved by:	CME-2736
	Issue Code(s):	SP, CS	Page:	1 of 3	Document #:	510000300
					Rev:	L

## Replacement Parts Diagram

### Model HBB250 (Series A-C & HBB250R (Series A-D))

**PROPRIETARY RIGHTS NOTICE** This document and all information contained within it is the property of Hamilton Beach Brands, Inc. (HBB). It is confidential and proprietary and has been provided to you for a limited purpose. It must be returned or destroyed upon request. Disclosure, reproduction or use of this document and any information contained within it, in full or in part, for any purpose is forbidden without the prior written consent of HBB. No photographs may be taken of any article fabricated or assembled from this document without the prior written consent of HBB.

#### **Cutter Assembly Replacement Instructions**



**Cutter Repair Kit  
for Rio Blenders**

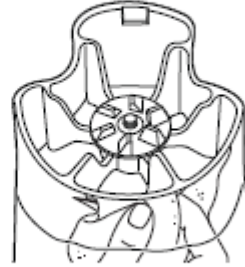


#### **⚠ WARNING**



**Cut Hazard**  
Handle cutter  
assembly with  
care.  
Failure to follow  
these instructions  
can result in cuts  
or other injuries.

#### **Removing the old cutter assembly**



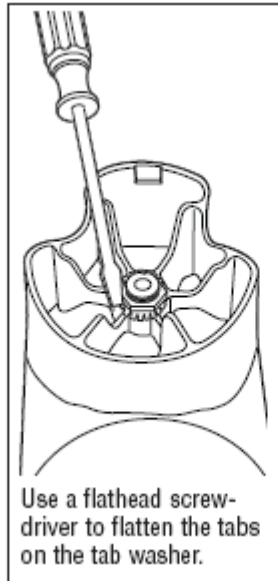
Hold the blades with a  
cloth. Unscrew the clutch  
counterclockwise.



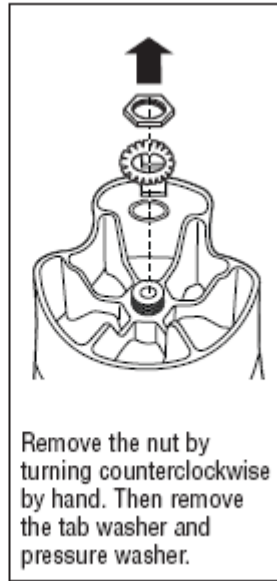
Remove the clutch and  
felt washer.



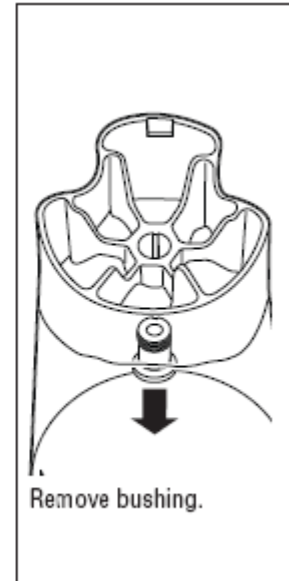
Remove the shaft and  
blade assembly



Use a flathead screw-  
driver to flatten the tabs  
on the tab washer.



Remove the nut by  
turning counterclockwise  
by hand. Then remove  
the tab washer and  
pressure washer.



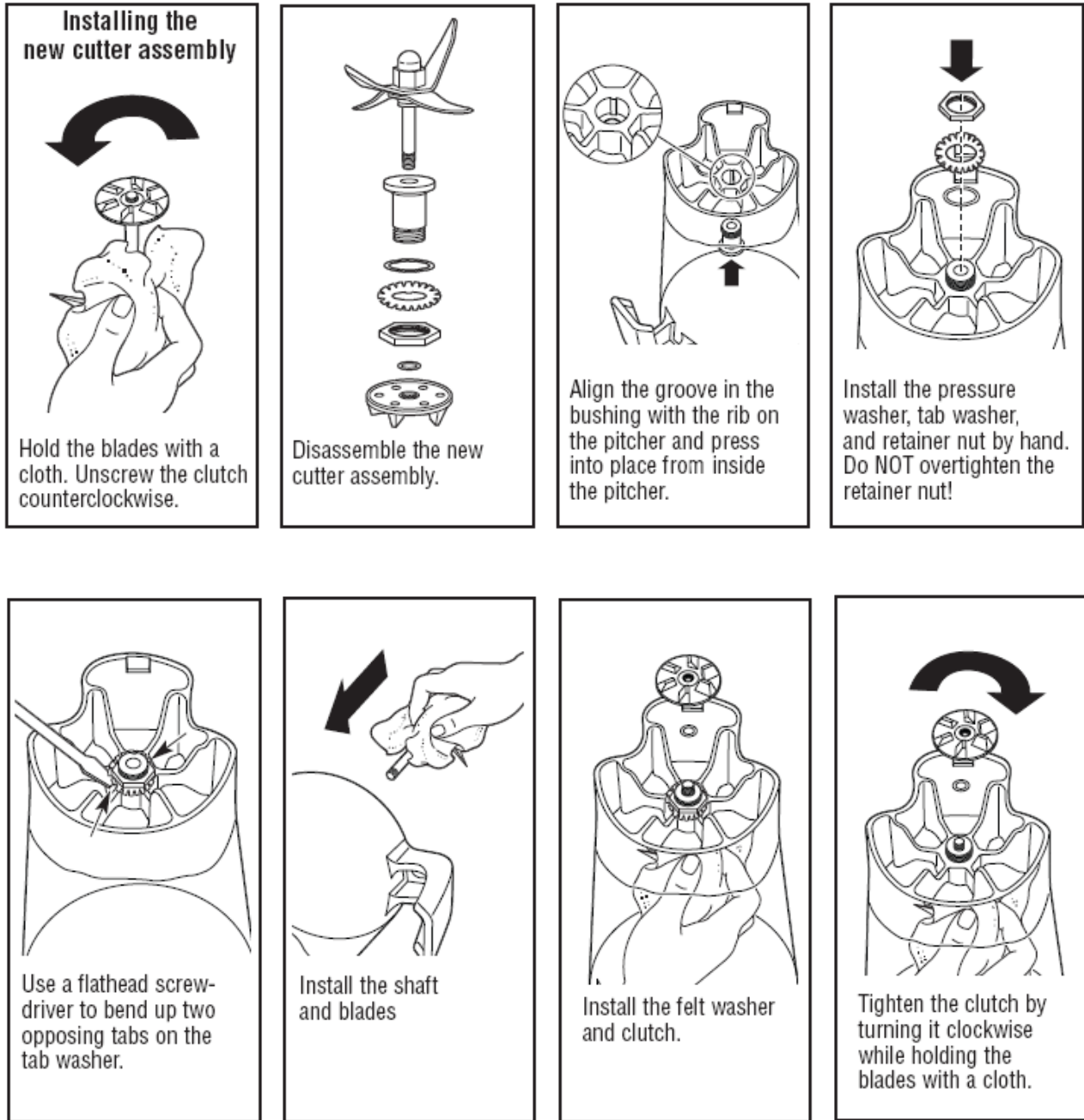
Remove bushing.


<p>4421 Waterfront Drive Glen Allen, VA 23060</p>	Revision Description: Changed upper housing part number		Revision Date: 11/23/09		Approved by: CME-2736	
	Request Number: CME-2736	Page: 2 of 3	Document #: 510000300	Rev: L		
	Issue Code(s): SP, CS					

## Replacement Parts Diagram

### Model HBB250 (Series A-C & HBB250R (Series A-D))

**PROPRIETARY RIGHTS NOTICE** This document and all information contained within it is the property of Hamilton Beach Brands, Inc. (HBB). It is confidential and proprietary and has been provided to you for a limited purpose. It must be returned or destroyed upon request. Disclosure, reproduction or use of this document and any information contained within it, in full or in part, for any purpose is forbidden without the prior written consent of HBB. No photographs may be taken of any article fabricated or assembled from this document without the prior written consent of HBB.



 <p>Hamilton Beach 4421 Waterfront Drive Glen Allen, VA 23060</p>	Revision Description: Changed upper housing part number		Request Number: CME-2736		Revision Date: 11/23/09		Approved by: CME-2736	
	Issue Code(s): SP, CS		Page: 3 of 3		Document #: 510000300		Rev: L	