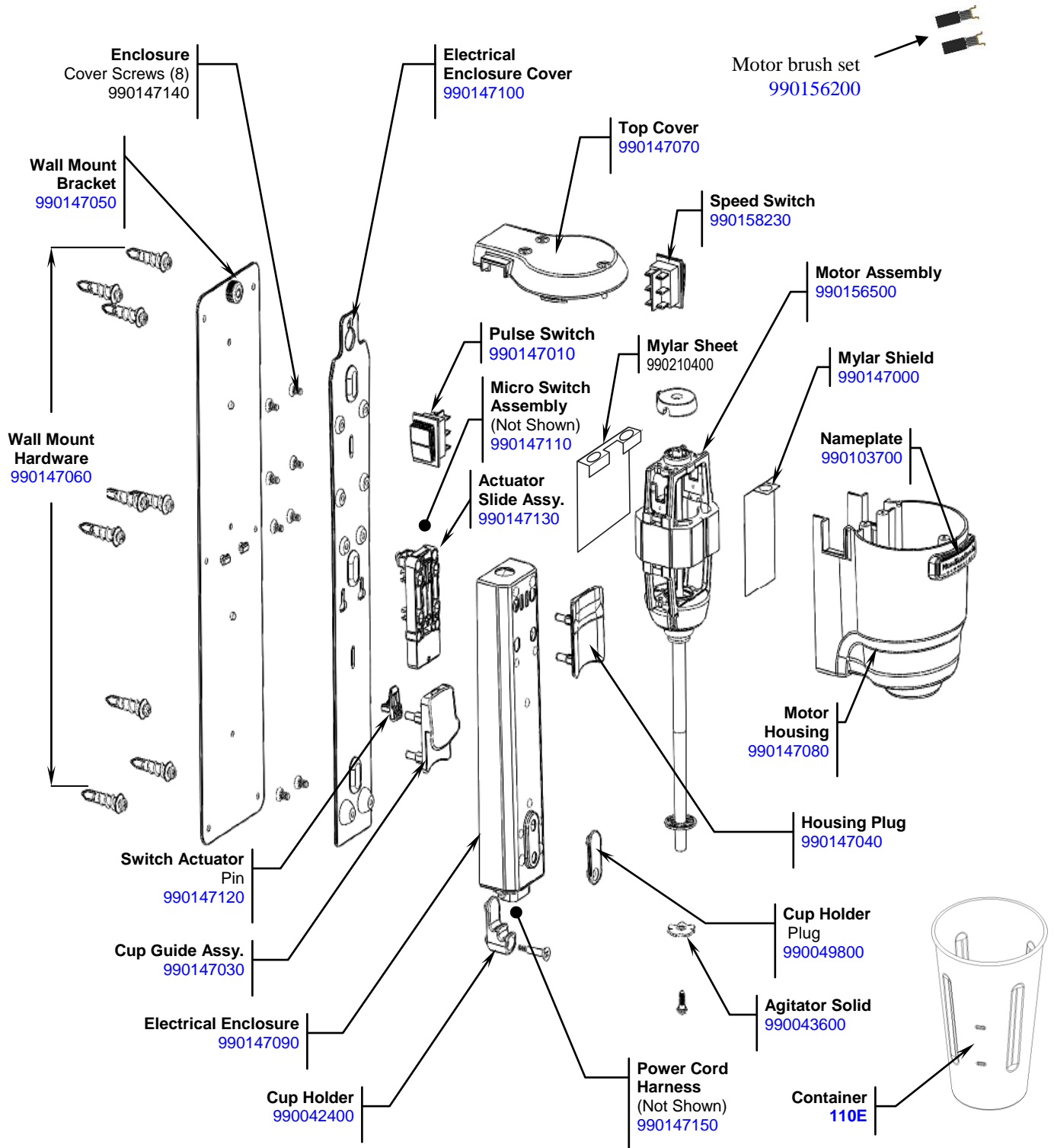


Parts and Accessories Diagram

PROPRIETARY RIGHTS NOTICE This document and all information contained within it is the property of Hamilton Beach Brands, Inc. (HBB). It is confidential and proprietary and has been provided to you for a limited purpose. It must be returned or destroyed upon request. Disclosure, reproduction or use of this document and any information contained within it, in full or in part, for any purpose is forbidden without the prior written consent of HBB. No photographs may be taken of any article fabricated or assembled from this document without the prior written consent of HBB.

Replacement Parts



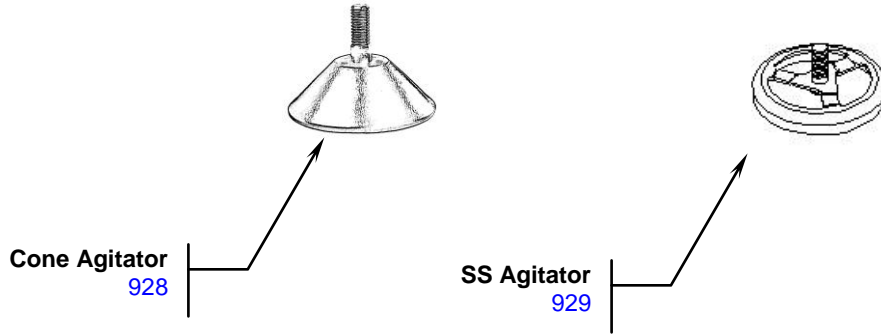
Initial Model – [HMD300](#)

<p>Hamilton Beach 4421 Waterfront Drive Glen Allen, VA 23060</p>	Revision Description: Replace speed switch part number.					
	Request Number:	DOC6948	Revision Date:	10/03/2016	Approved by:	DOC6948
	Issue Code(s):		Page:	1 of 2	Document #:	540006600
					Rev:	D

Parts and Accessories Diagram

PROPRIETARY RIGHTS NOTICE This document and all information contained within it is the property of Hamilton Beach Brands, Inc. (HBB). It is confidential and proprietary and has been provided to you for a limited purpose. It must be returned or destroyed upon request. Disclosure, reproduction or use of this document and any information contained within it, in full or in part, for any purpose is forbidden without the prior written consent of HBB. No photographs may be taken of any article fabricated or assembled from this document without the prior written consent of HBB.

Accessories



Hamilton Beach 4421 Waterfront Drive Glen Allen, VA 23060	Revision Description:	Replace speed switch part number.					
	Request Number:	DOC6948	Revision Date:	10/03/2016	Approved by:	DOC6948	
	Issue Code(s):		Page:	2 of 2	Document #:	540006600	Rev: