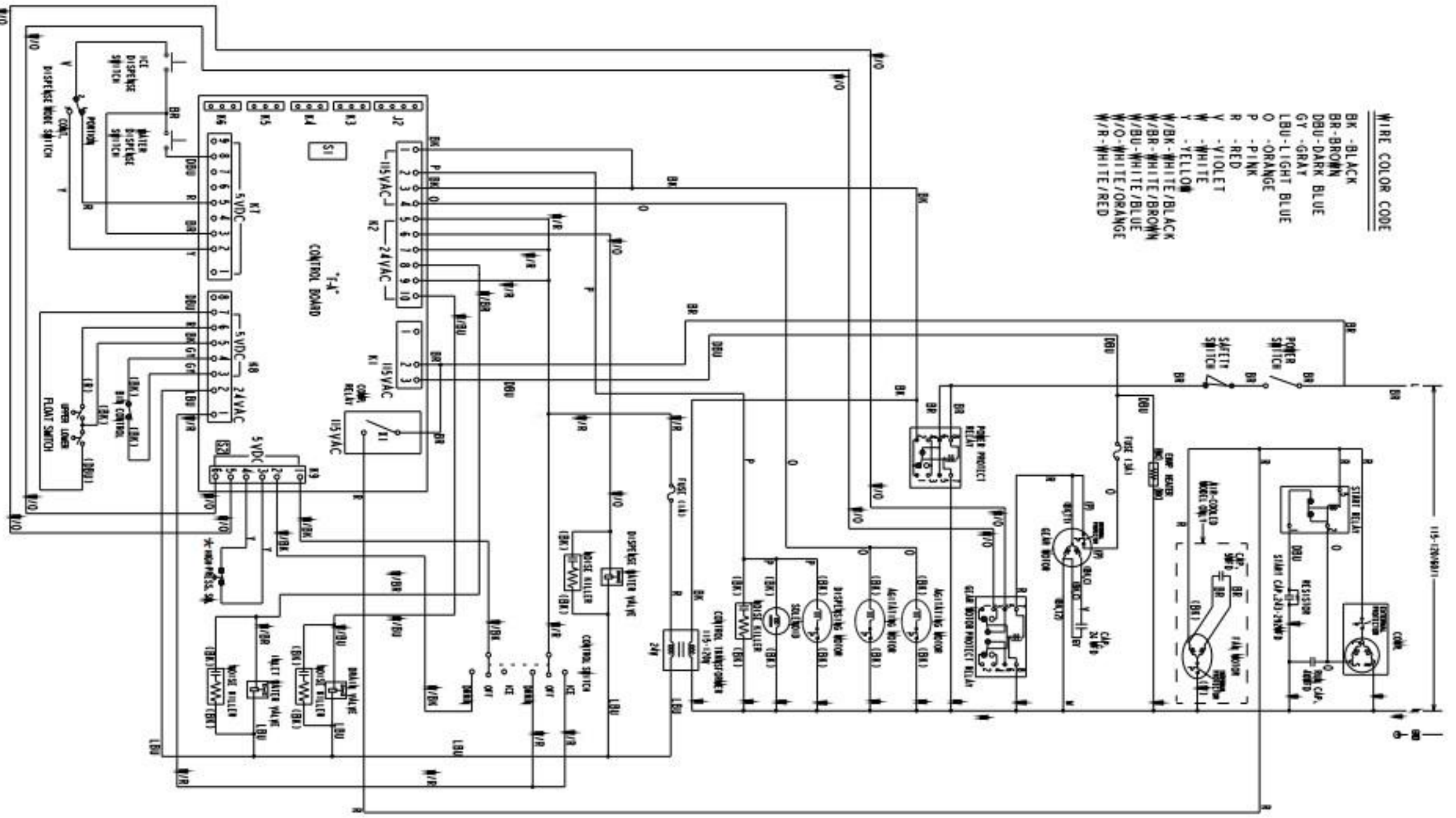


- WIRE COLOR CODE
- BK - BLACK
 - BR - BROWN
 - DBU - DARK BLUE
 - GY - GRAY
 - LBU - LIGHT BLUE
 - O - ORANGE
 - P - PINK
 - R - RED
 - Y - VIOLET
 - W - WHITE
 - Y - YELLOW
 - W/BK - WHITE/BLACK
 - W/BR - WHITE/BROWN
 - W/BU - WHITE/BLUE
 - W/O - WHITE/ORANGE
 - W/R - WHITE/RED

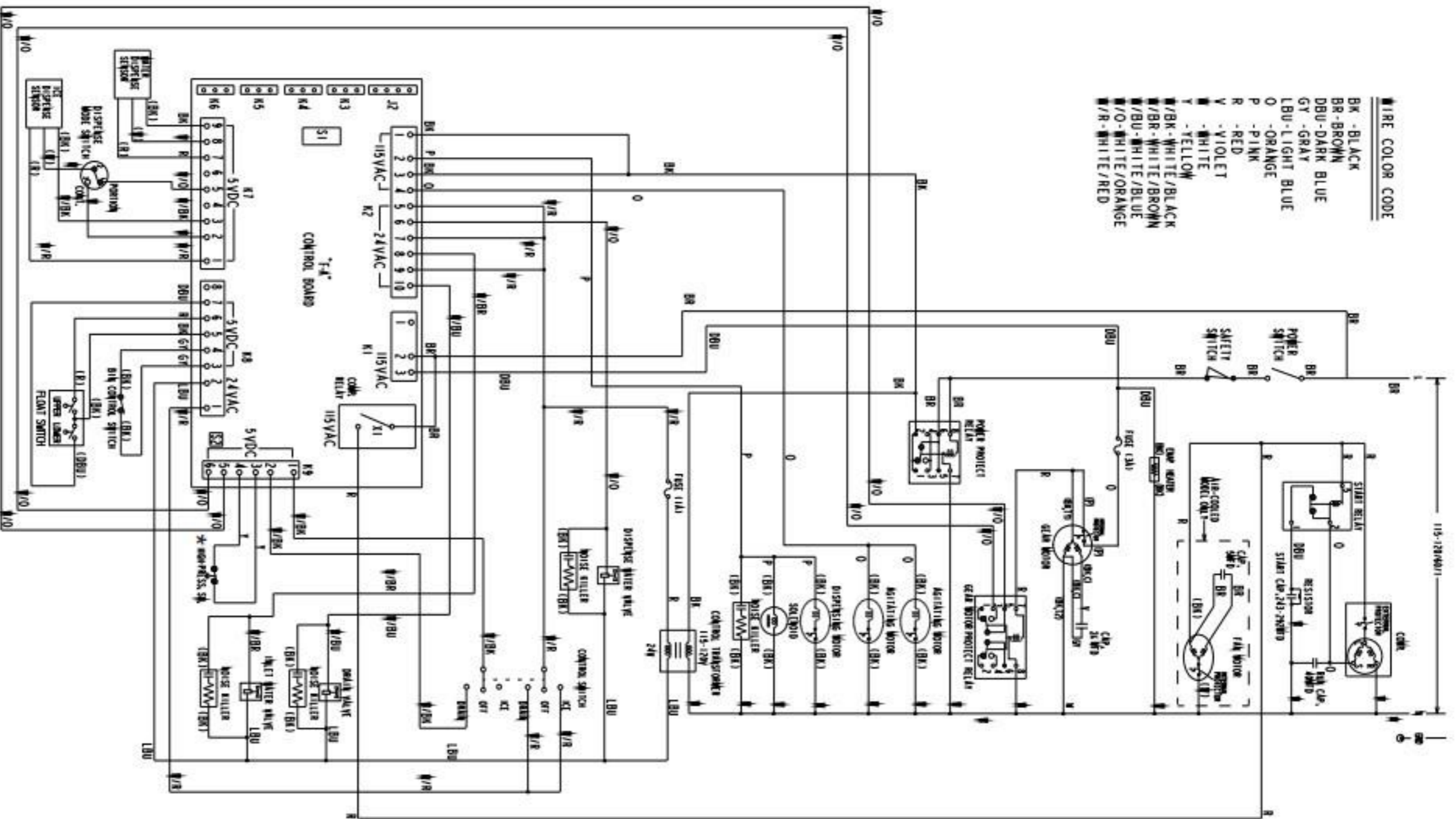


S I DIP SWITCH										
S I DIP SWITCH NO.	1	2	3	4	5	6	7	8	9	10
DCM - 75IB_H	OFF	OFF	OFF	OFF	ON	ON	OFF	ON	OFF	OFF

* High Pressure Switch		
	Air-Cooled Model	Water-Cooled Model
Cut-out	412± ²¹ PSIG	384± ²¹ PSIG
Cut-in	327±21 PSIG	284±21 PSIG

WIRE COLOR CODE

BK - BLACK
 BR - BROWN
 DBU - DARK BLUE
 GY - GRAY
 LBU - LIGHT BLUE
 O - ORANGE
 P - PINK
 R - RED
 Y - VIOLET
 W - WHITE
 Y - YELLOW
 W/BK - WHITE/BLACK
 W/BR - WHITE/BROWN
 W/BU - WHITE/BLUE
 W/O - WHITE/ORANGE
 W/R - WHITE/RED



S I D I P SWITCH										
S I D I P SWITCH NO.	1	2	3	4	5	6	7	8	9	10
DCM-75IB_H-OS	OFF	OFF	OFF	OFF	OFF	ON	OFF	ON	OFF	OFF

*** High Pressure Switch**

* High Pressure Switch		
Air-Cooled Model	412± ²¹ ₀ PSIG	Water-Cooled Model
Cut-out	327±21 PSIG	384± ²¹ ₀ PSIG
Cut-in	284±21 PSIG	284±21 PSIG