



**HOSHIZAKI**  
**ICE/BEVERAGE DISPENSER**

**MODEL DM-180A**  
**DM-180AX**

**PARTS LIST**

**DM-180A**

D-1 May, 1994  
E-0 Dec., 1994  
F-0 Jan., 1996  
F-1 Oct., 1996  
G-1 Dec., 1996

**DM-180AX**

E-2 July, 1995  
G-1 Dec., 1996

## MATERIAL ABBREVIATIONS

### ALUMINUM

AL = Aluminum

### COPPER

CU = Copper

### PLASTIC

ABS = Acrylonitrile -butadiene - styrene  
AC = Polyacetal  
EVA = Ethylene vinyl acetate  
PA = Polyamide = Nylon  
PC = Polycarbonate  
PE = Polyethylene  
PES = Polyester  
PETP = Polyethylene terephthalate = Tetlon  
PP = Polypropylene  
PS = Polystyrene  
PIFE = Polytetrafluoroethylene = Teflon  
PUR = Polyurethane  
PVC = Polyvinyl chloride

### RUBBER

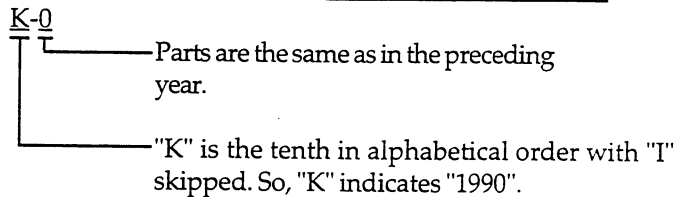
VN = Vinyl Nitrile  
EPDM = EP rubber  
NBR = Nitrile butadiene rubber  
NR = Natural rubber  
NP = Neoprene  
SLR = Silicone rubber  
SY.R = Synthetic rubber  
EPH = Epichlorohydrin

### STEEL

G.S = Galvanized steel  
S.S = Stainless steel  
PS = Plated steel  
PAS = Primed steel

## AUXILIARY CODE

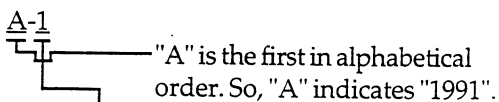
Ex.1



(Note) - = Part deleted.

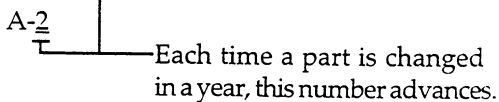
x = Part deleted and replaced by "o" part.

Ex.2



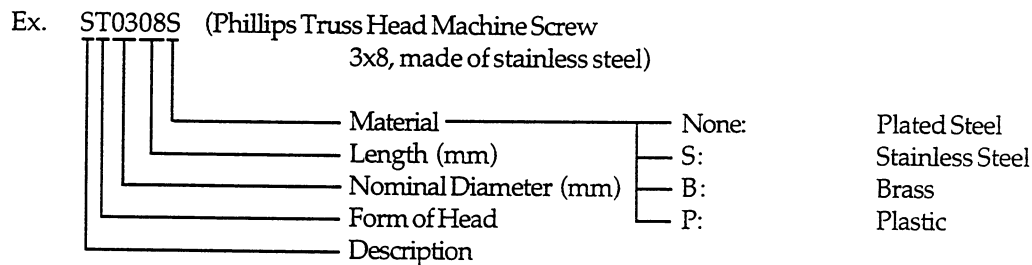
o = New part for "x" in the same auxiliary code.

Ex.3



## FASTENER ABBREVIATION LIST

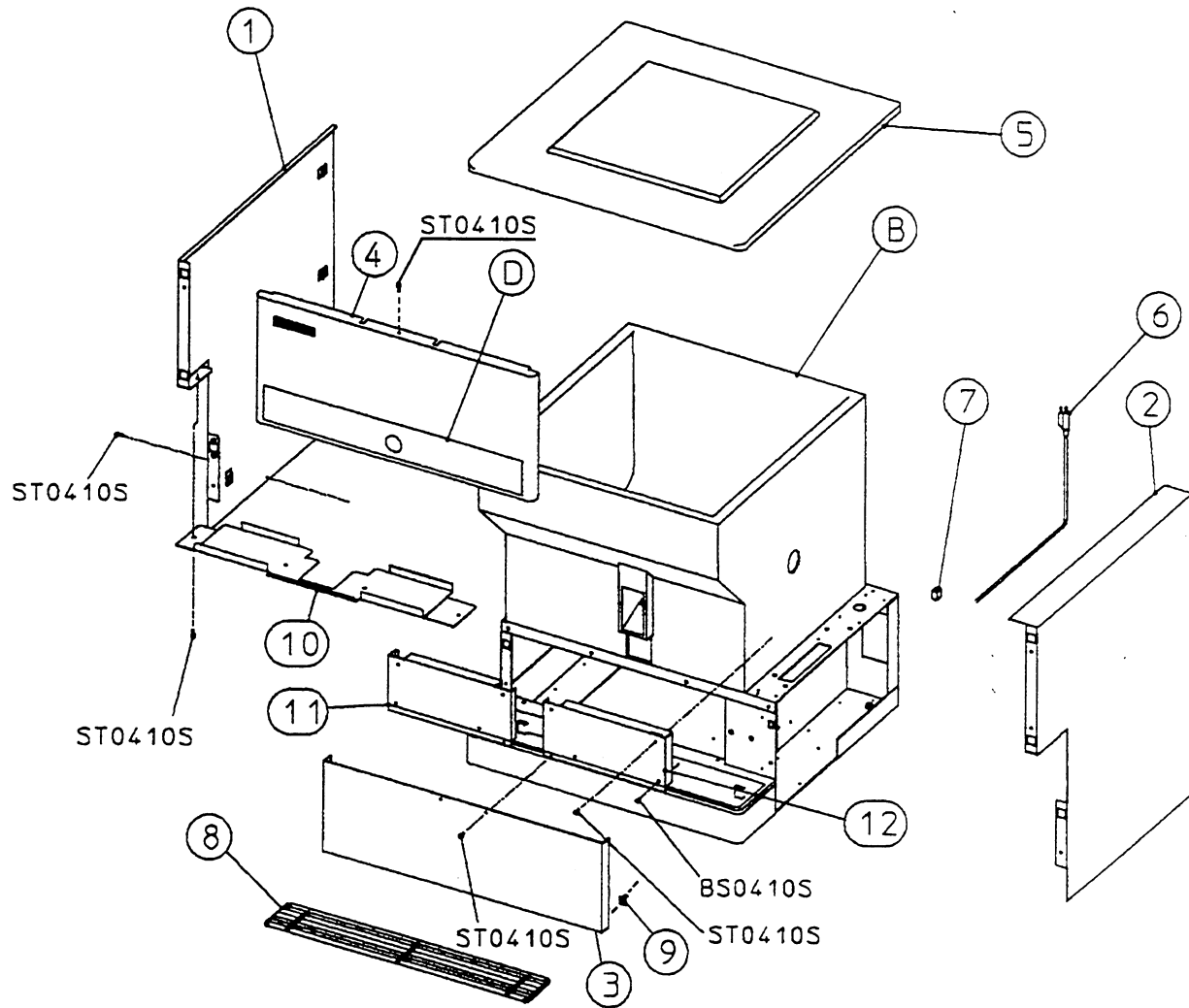
ST	Phillips Truss Machine Screw
SP	Phillips Pan Head Machine Screw
SF	Phillips Flat Head Machine Screw
SS	Phillips Pan Head Machine Screw with Split Lock Washer
SW	Phillips Pan Head Machine Screw with Split Lock Washer and Flat Washer
T1	Phillips Truss Head Tapping Screw (Correspond to Type A)
T2	Phillips Truss Head Tapping Screw (Correspond to Type B)
T3	Phillips Truss Head Tapping Screw (Correspond to Type C)
FT	Phillips Truss Head Tapping Screw (Special)
BH	Hexagon Head Bolt
BC	Socket Head Cap Screw
BS	Hexagon Bolt with Split Washer
BW	Hexagon Bolt with Split Washer and Flat Washer
BF	Hexagon Flange Bolt
BR	Cross-Recessed Hexagon Head Bolt
BRW	Cross-Recessed Hexagon Head Bolt with Split Lock Washer and Flat Washer
WL	Split Lock Washer
WT	External Tooth Washer
WF	Flat Washer
WS	Spring Washer
NH	Hexagon Nut
NF	Hexagon Flange Nut
NC	Hexagon Cap Nut
NS	Square Nut
NW	Wing Nut

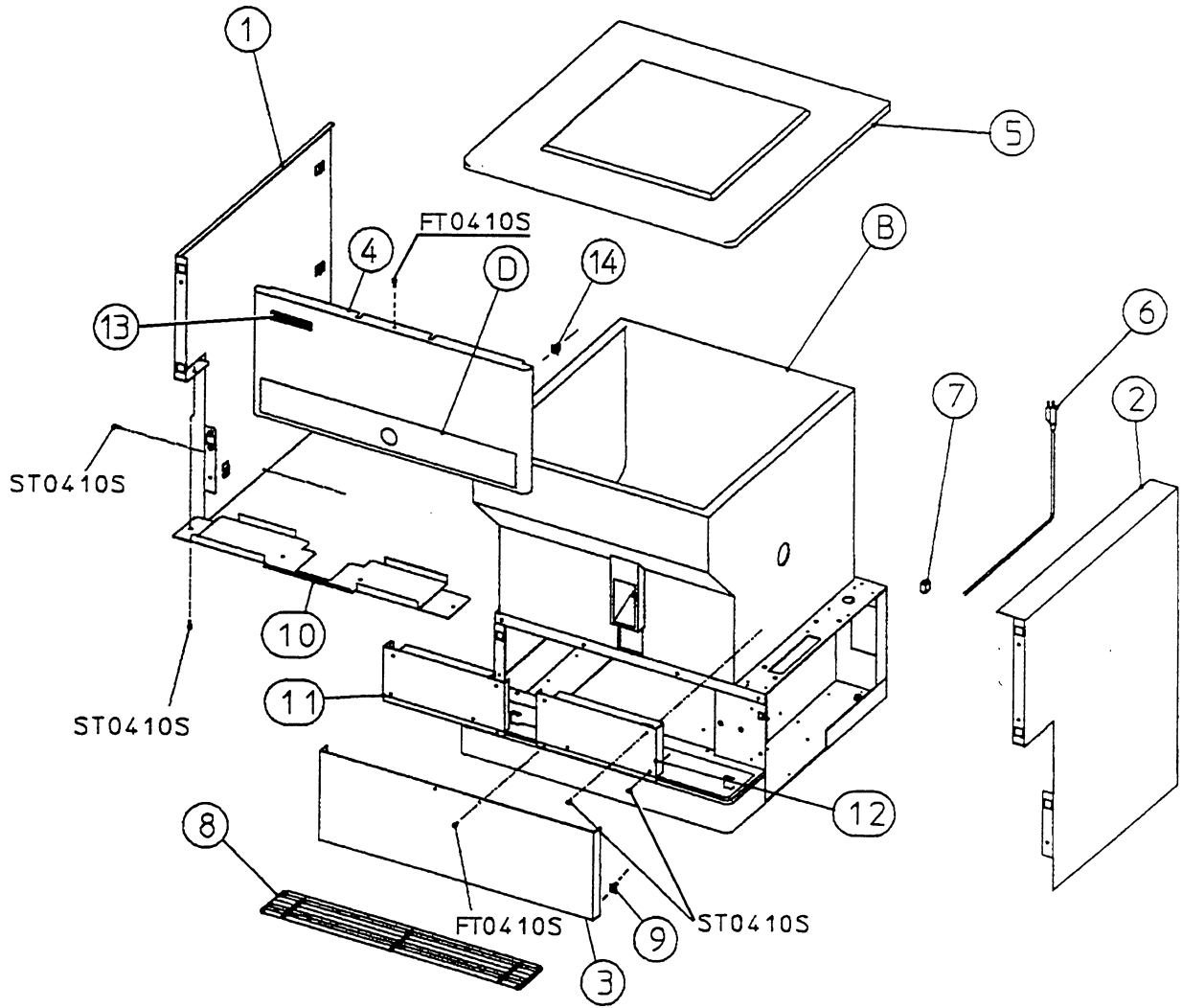


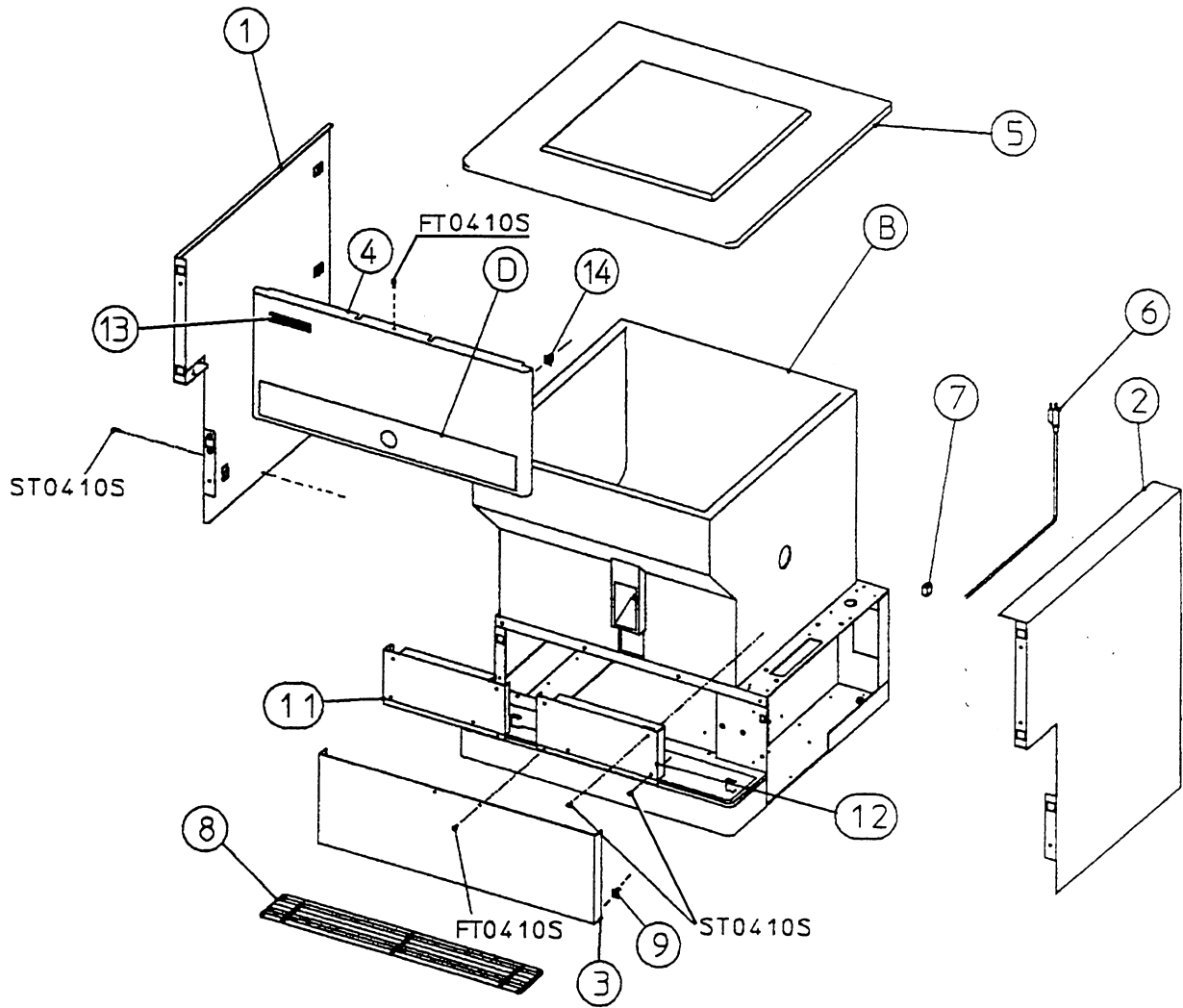
(Note) Second character is numerical except toe list.

Ex. S1, S2, B3 etc.

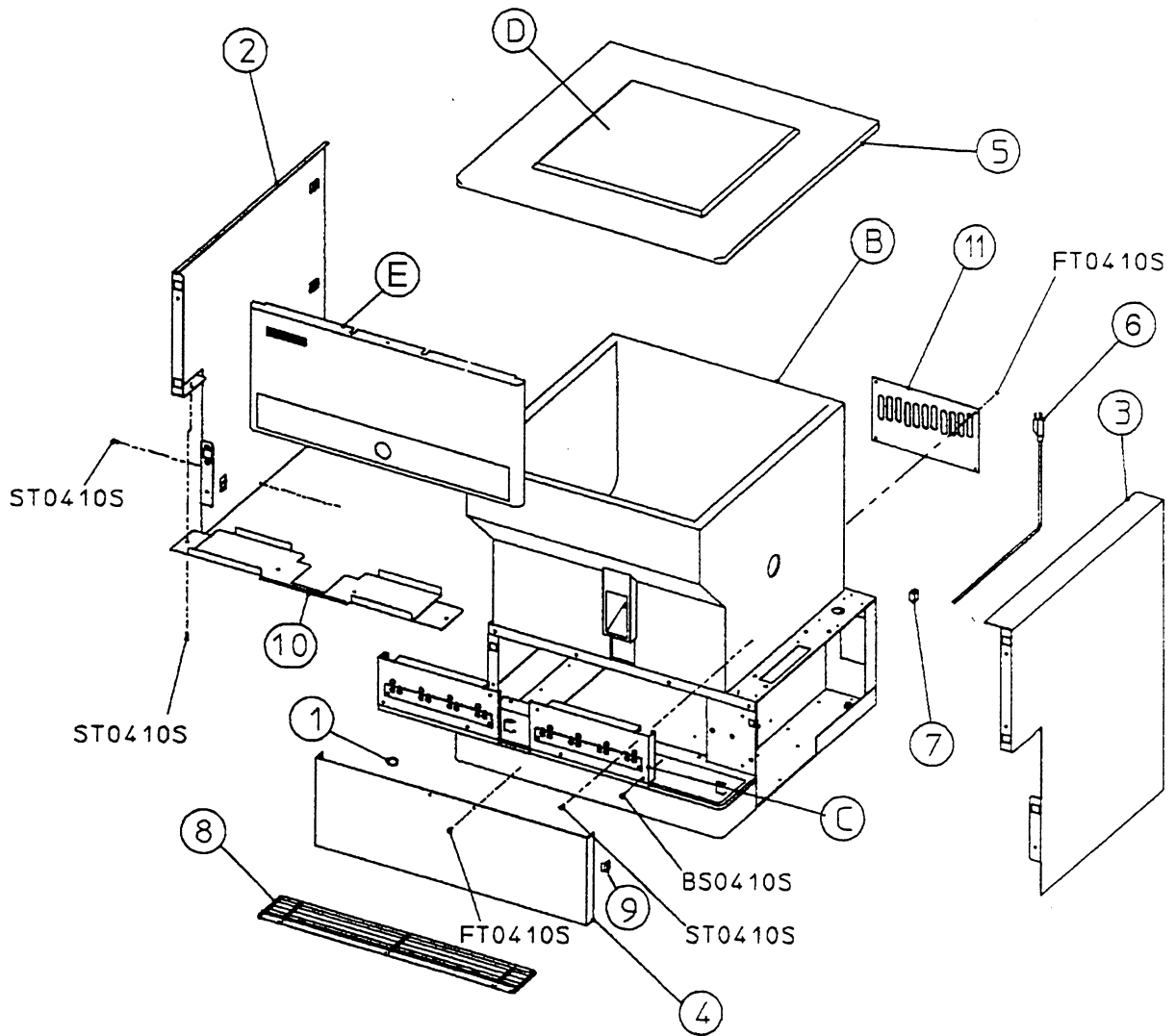
And abbreviations and names are shown under the illustration.

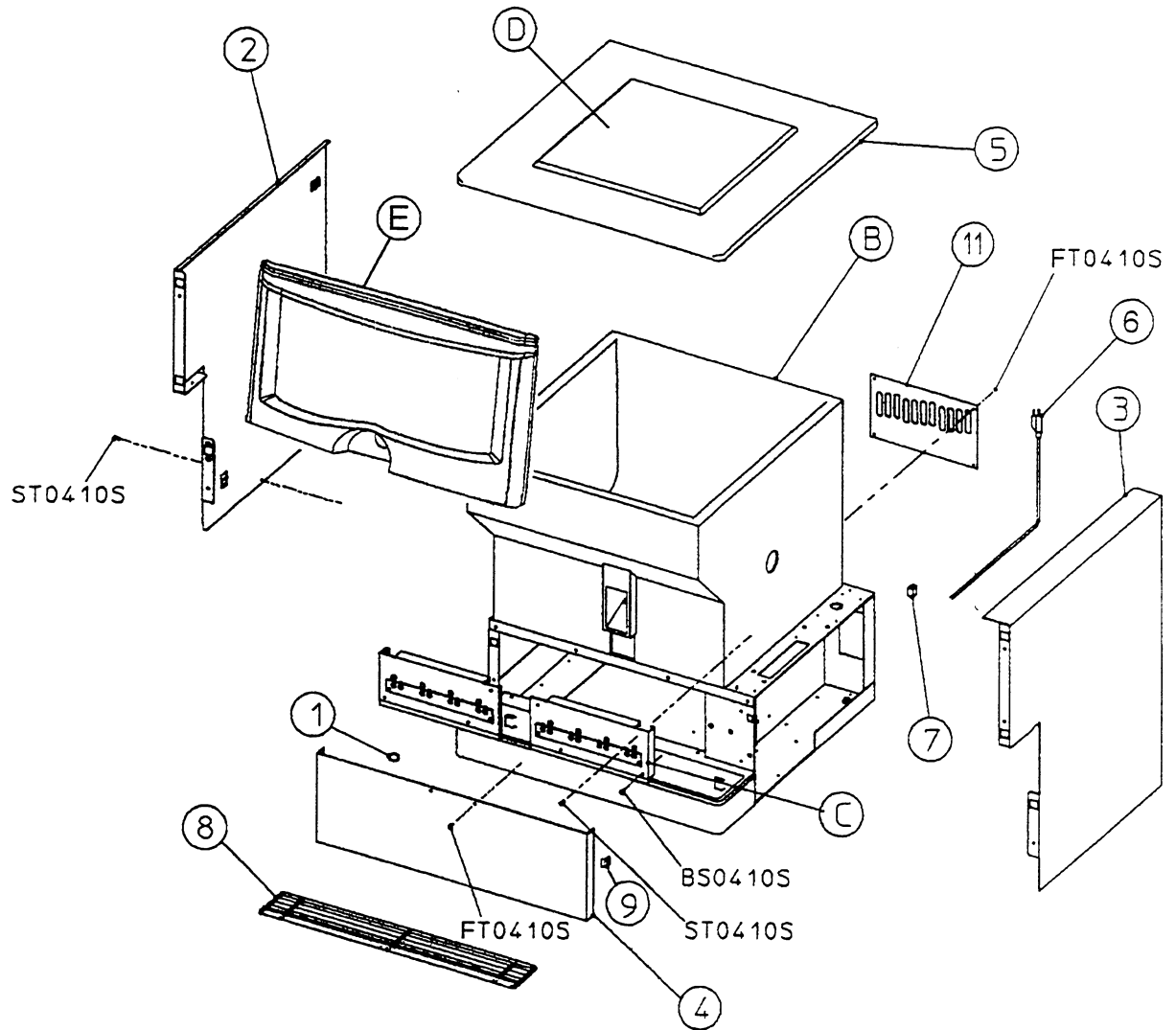






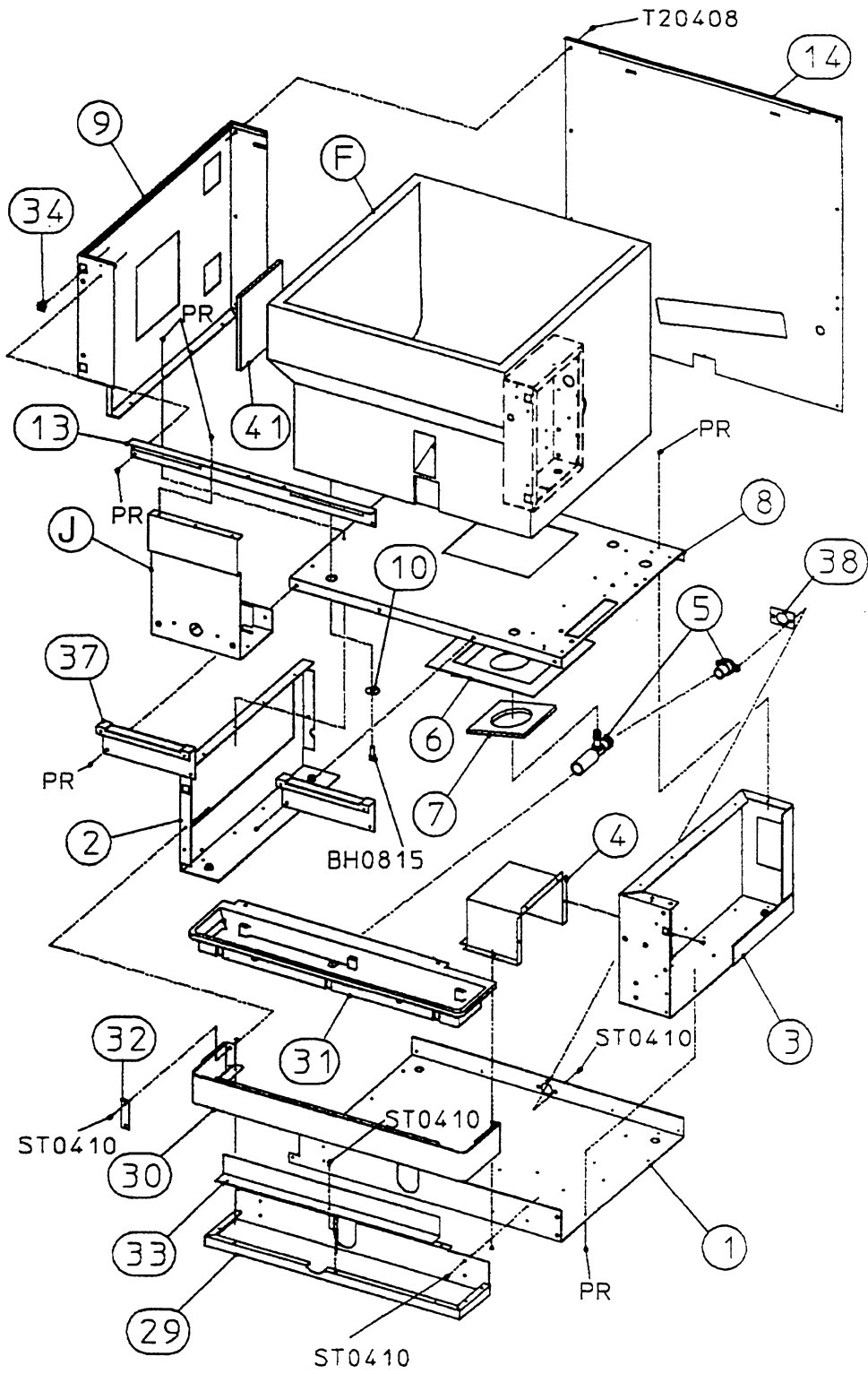
MODEL: DM-180A TITLE: A. DISPENSER ASSEMBLY							
INDEX NO.	DESCRIPTION	MATERIAL OR MODEL NUMBER	PART NUMBER	REQUIRED NUMBER			
				D-1 E-0	F-0	F-1	G-1
B	MECHANISM ASSEMBLY	-	1A0092A01	1	-		
		-	1A0127A01		1	-	
		-	1A0161A01			1	1
D	LABEL LOCATION	-	3A0315A03	1	1	-	
		-	3A0694A02			1	1
1	SIDE PANEL (L)	SS	2A0283G01	1	-		
		SS	2A0550G01		1	1	1
2	SIDE PANEL (R)	SS	2A0284G01	1	-		
		SS	2A0549G01		1	1	1
3	SPLASH PANEL ASSEMBLY	SS	2A0290G01	1	1	1	x1
	SPLASH PANEL (A)	SS	2A0279-01				o1
4	FRONT PANEL ASSEMBLY	SS	2A0291G01	1	-		
	FRONT PANEL	(2A0559A01)	2A0551-01		1	1	1
5	MANUAL FILL COVER	ABS	2A0189-01	1	1	1	1
6	POWER SUPPLY CORD	AEC-30	440894-01	1	1	1	1
7	BUSHING	SR-7K-2	420472-02	1	1	1	1
8	DRAIN GRILL	STEEL	2A0187G01	1	1	1	1
9	STRIKE	263-000006-00 (2A0559A01)	4A0515-01	2	2	2	2
10	COVER (A)	SS	2A0286-01	1	1	-	
11	PLATE (A)	SS	2A0299-01	1	-		
		SS	2A0556-01		1	-	
		SS	2A0747-01			1	1
12	PLATE (B)	SS	2A0300-01	1	-		
		SS	2A0557-01		1	-	
		SS	2A0748-01			1	1
13	EMBLEM (L) HOSHIZAKI	(2A0559A01)	418634G01		1	1	1
14	STRIKE	(2A0559A01)	4A0515-01		4	4	4

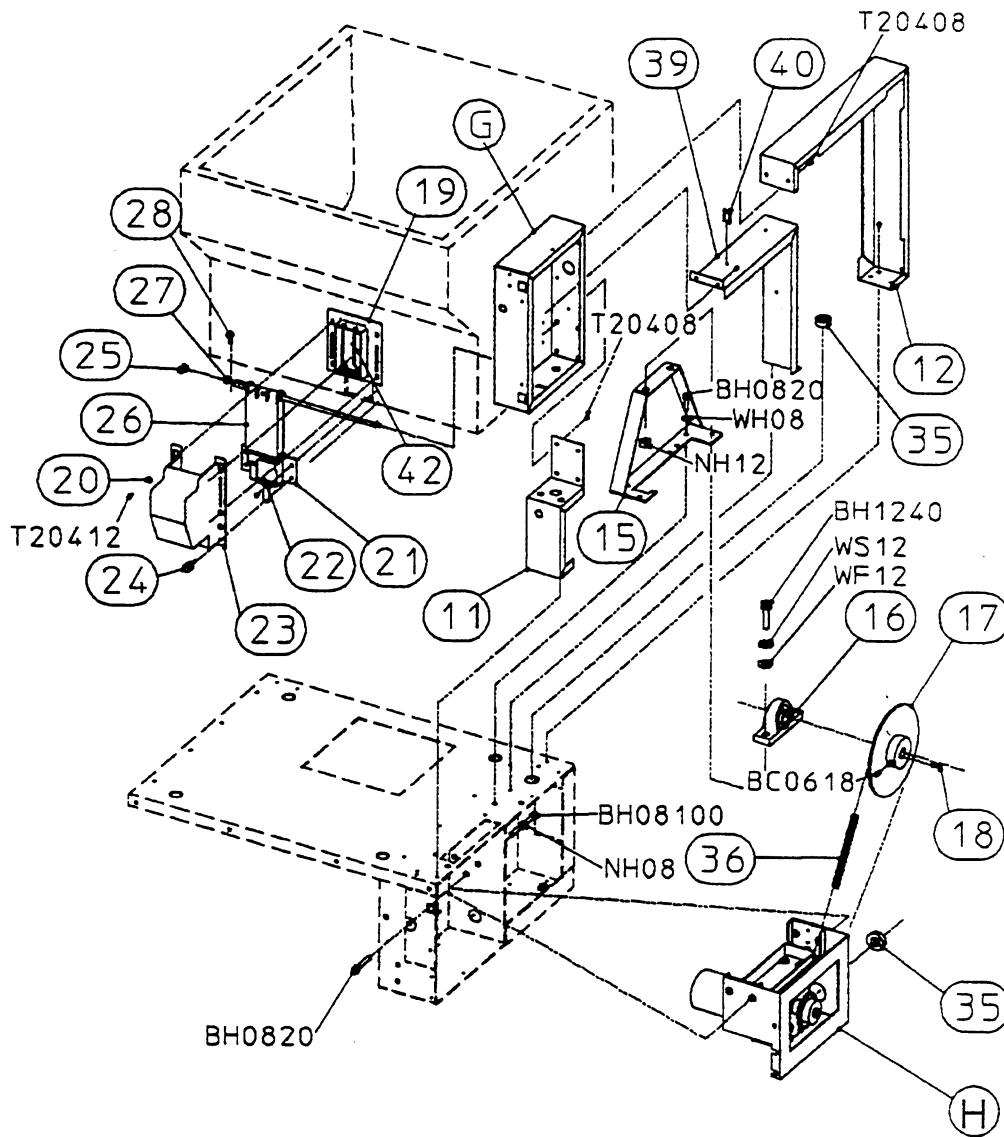


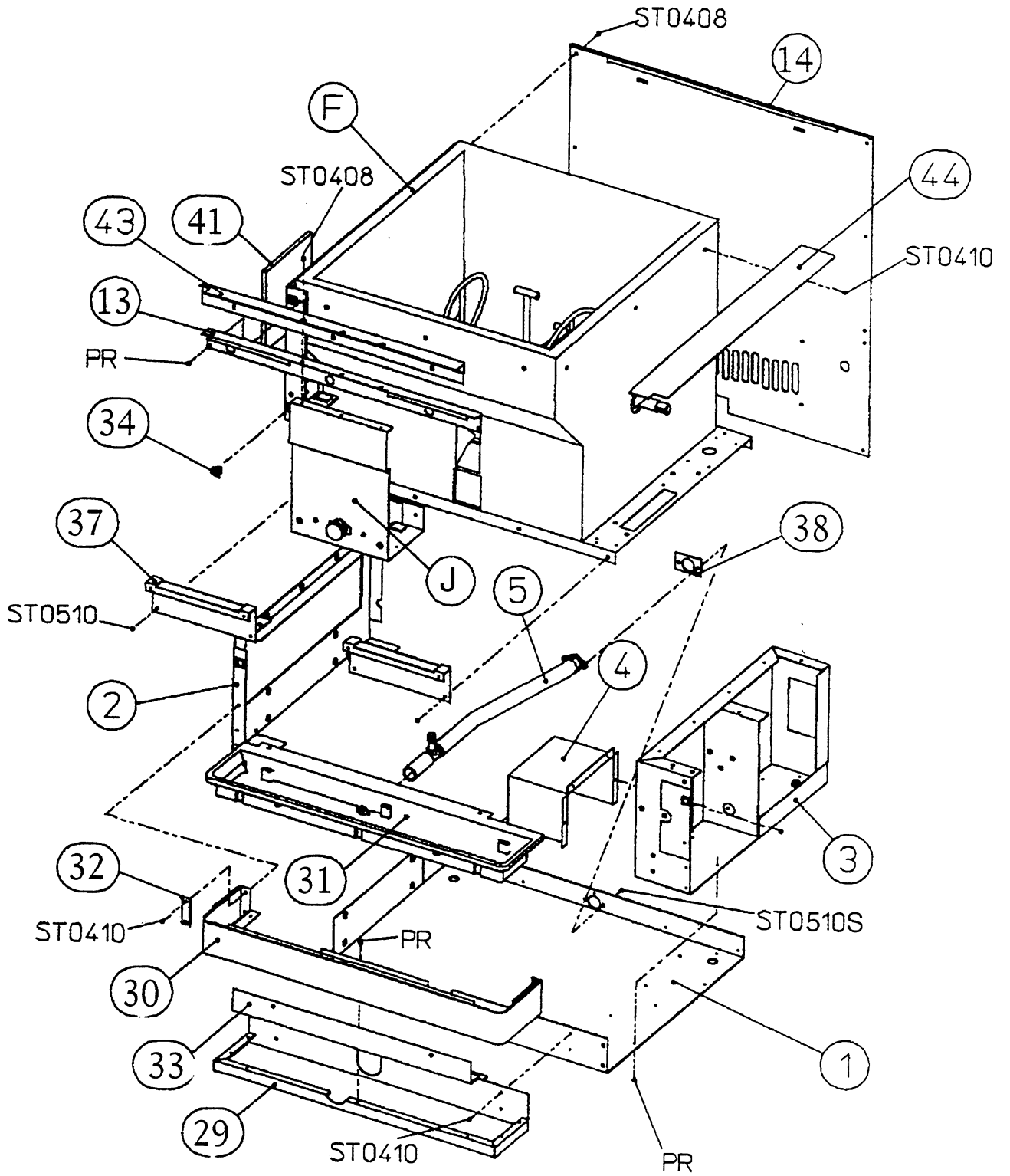


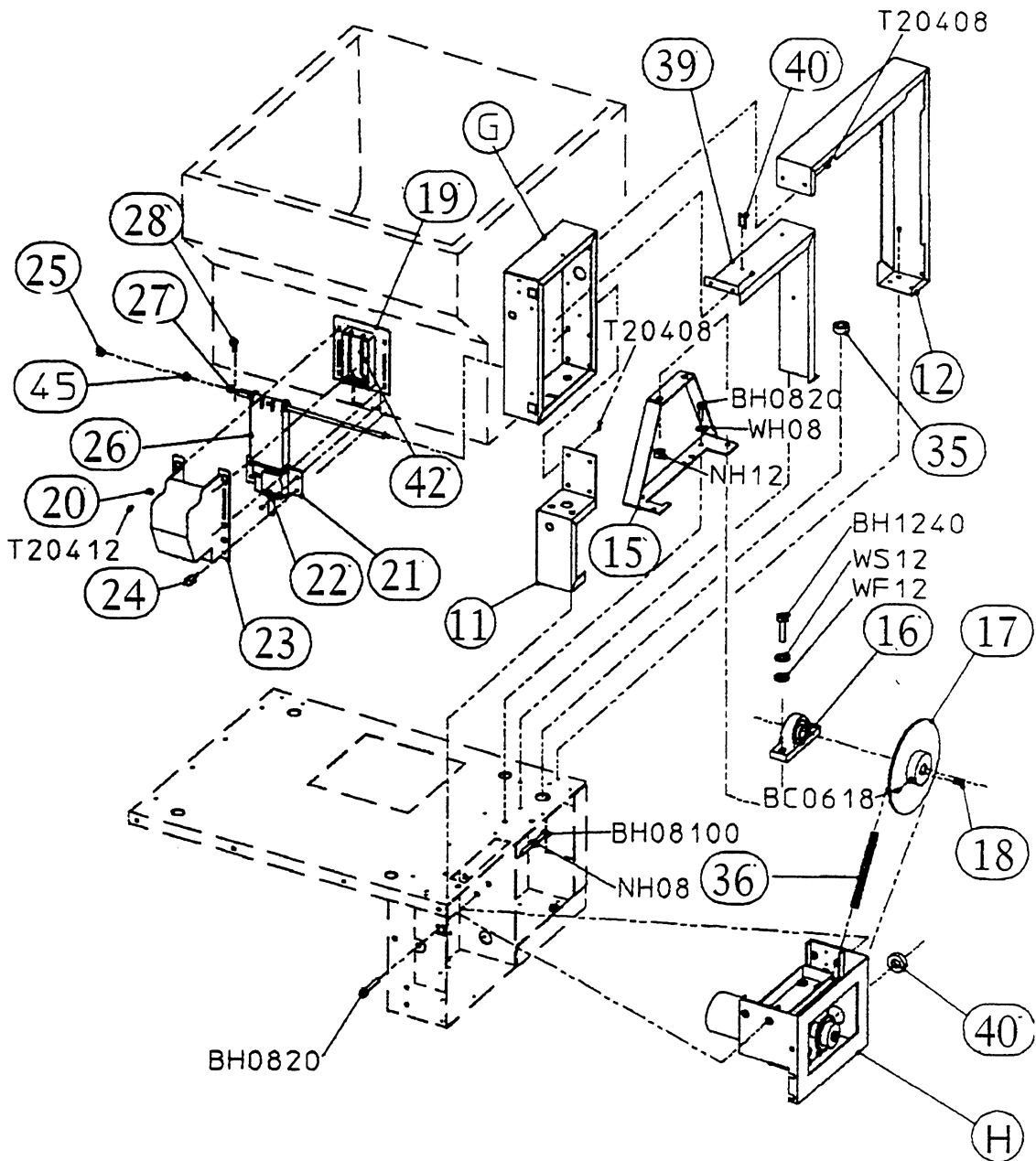
**MODEL: DM-180AX TITLE: A. DISPENSER ASSEMBLY**

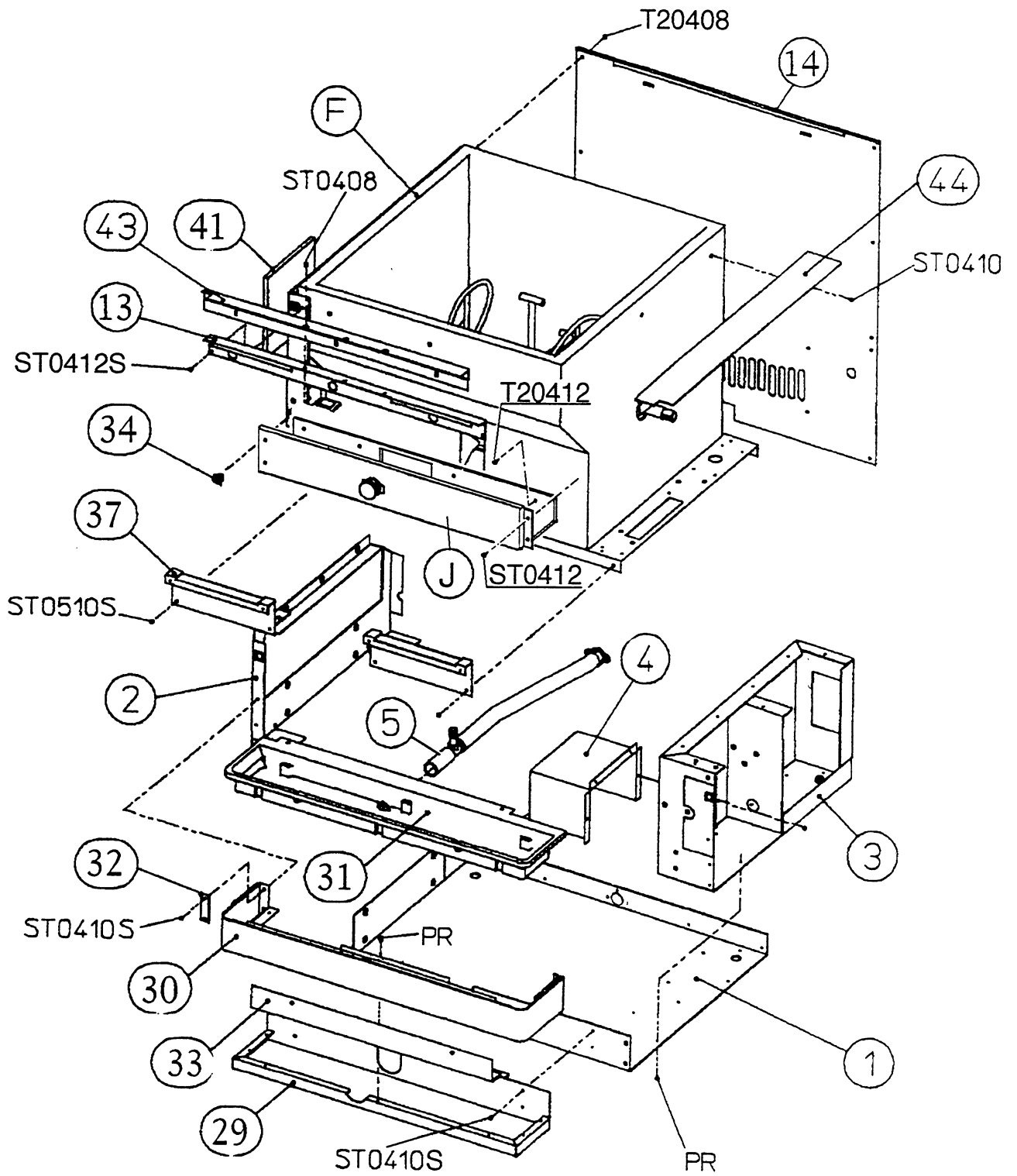
INDEX NO.	DESCRIPTION	MATERIAL OR MODEL NUMBER	PART NUMBER	REQUIRED NUMBER					
				E-2	G-1				
B	MECHANISM ASSEMBLY	-	1A0126A01	1	-				
		-	1A0160A01		1				
C	BEVERAGE HEAD ASSEMBLY	-	2A0561A01	1	-				
		-	2A0745A01		1				
D	LABEL LOCATION	-	3A0315A04	1	-				
		-	3A0694A01		1				
E	FRONT PANEL ASSEMBLY	-	2A0559A01	1	-				
	MERCHANDISING PANEL ASSEMBLY	-	2A0729A01		1				
1	BEVERAGE TUBING CLAMP	12.0	4A0533-02	16	16				
2	SIDE PANEL (L)	SS	2A0550G01	1	1				
3	SIDE PANEL (R)	SS	2A0549G01	1	1				
4	SPLASH PANEL ASSEMBLY	SS	2A0290G01	1	x1				
	SPLASH PANEL (A)	SS	2A0279-01		o1				
5	MANUAL FILL COVER	ABS	2A0189-01	1	1				
6	POWER SUPPLY CORD	AEC-30	440894-01	1	1				
7	BUSHING	SR-7K-2	420472-02	1	1				
8	DRAIN GRILL	STEEL	2A0187G01	1	1				
9	STRIKE	263-0000006-00	4A0515-01	2	2				
10	COVER (A)	SS	2A0286-01	1	-				
11	INLET TUBE COVER	GS	3A0485-01	1	1				

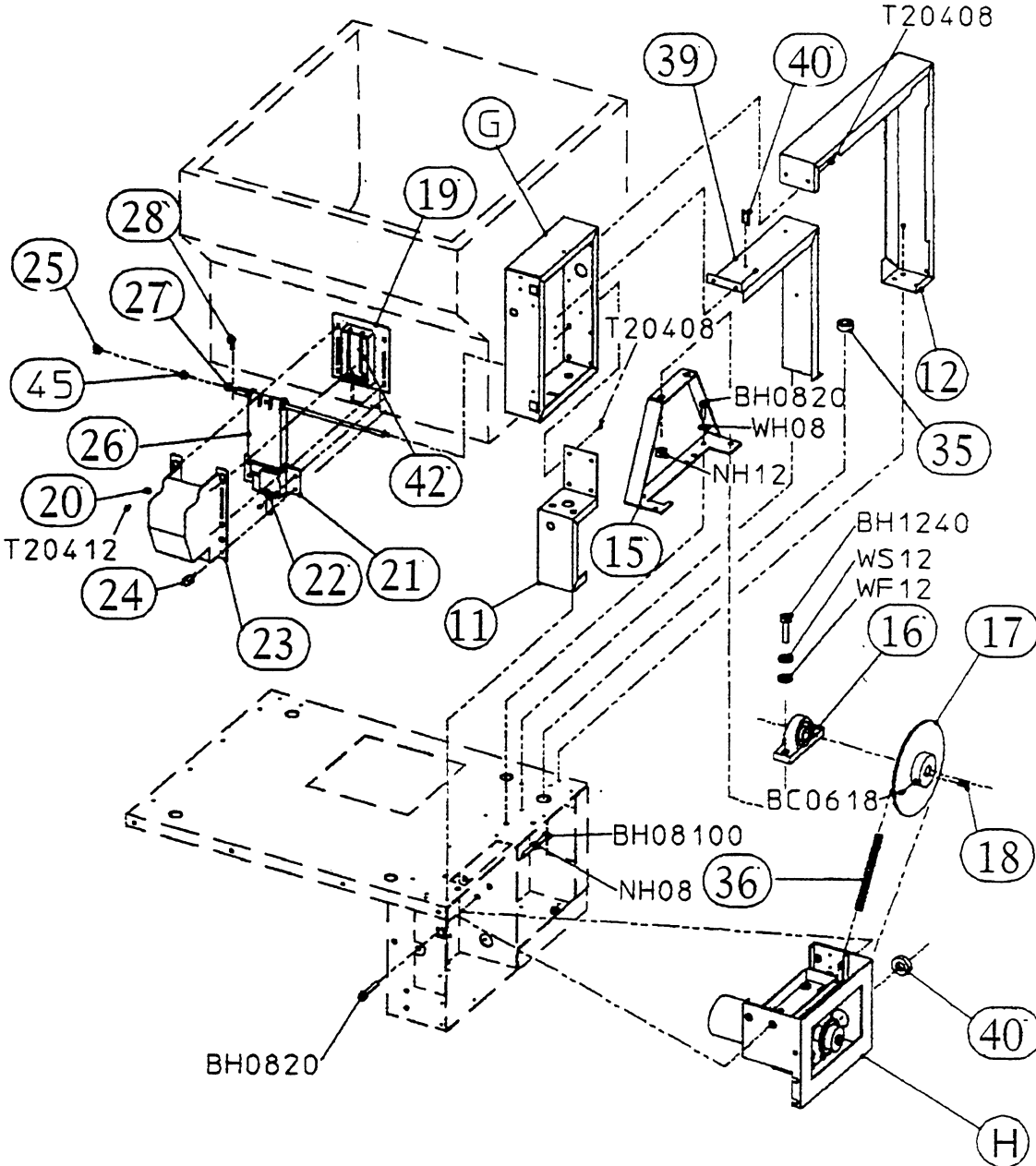








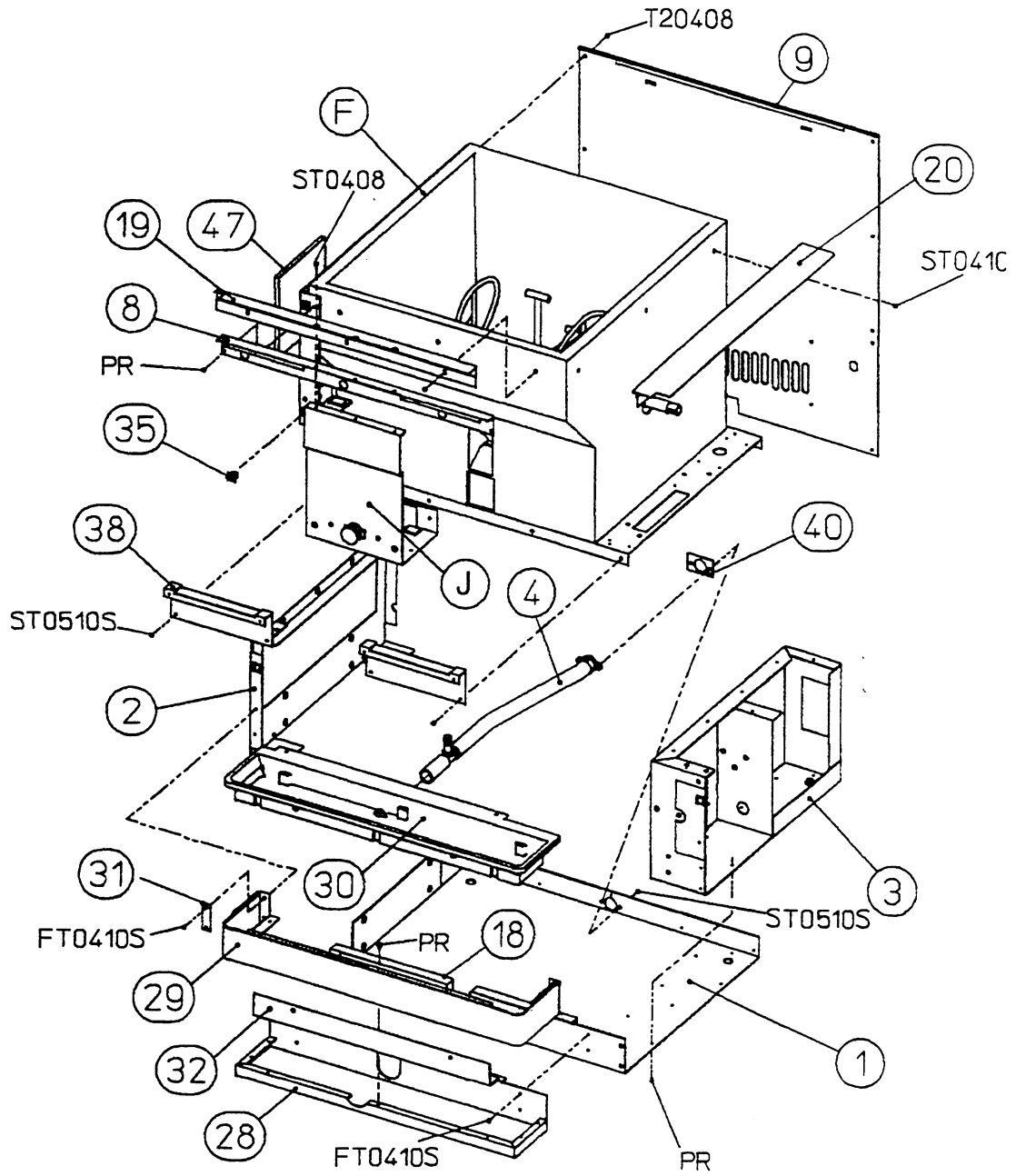


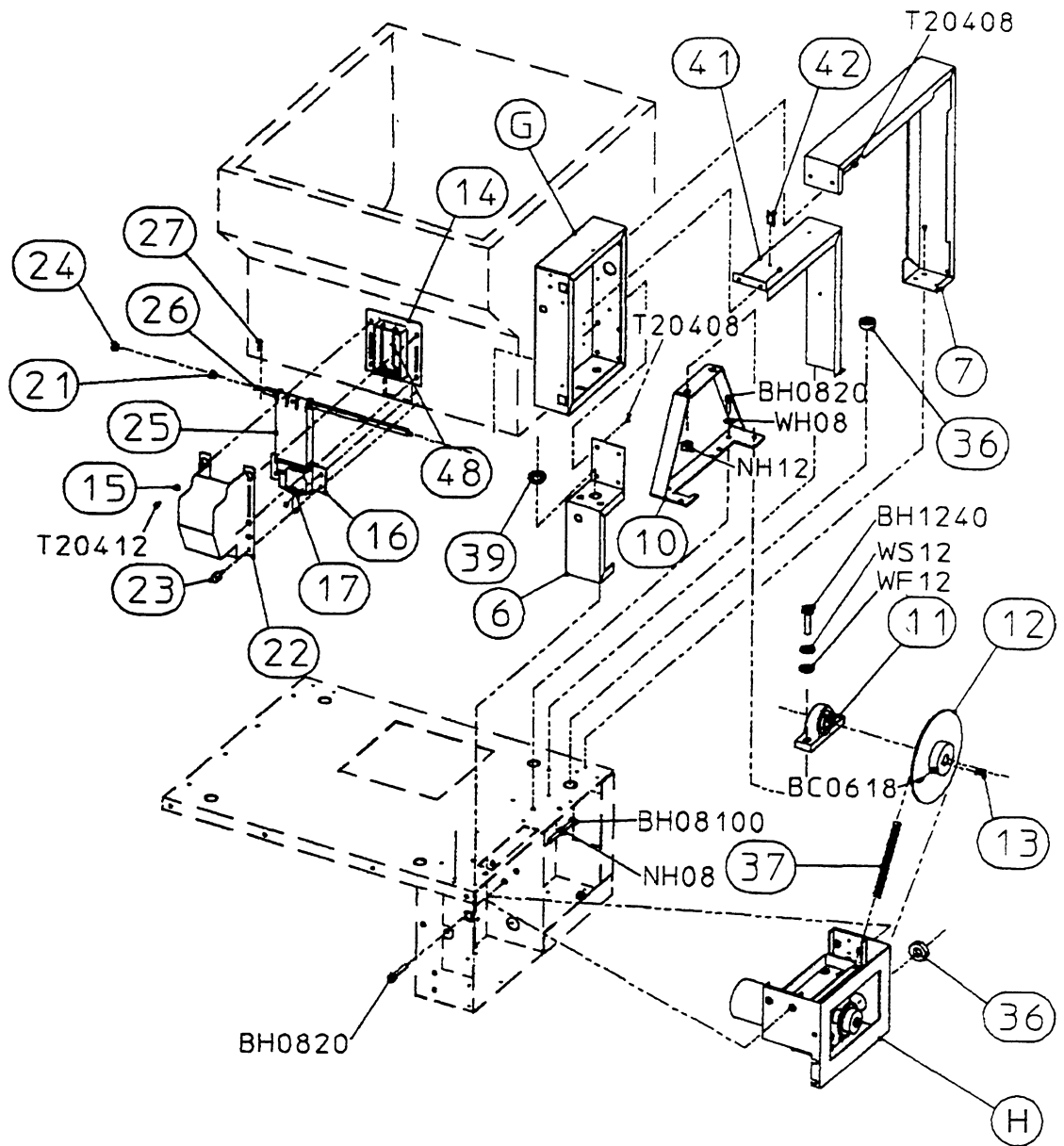


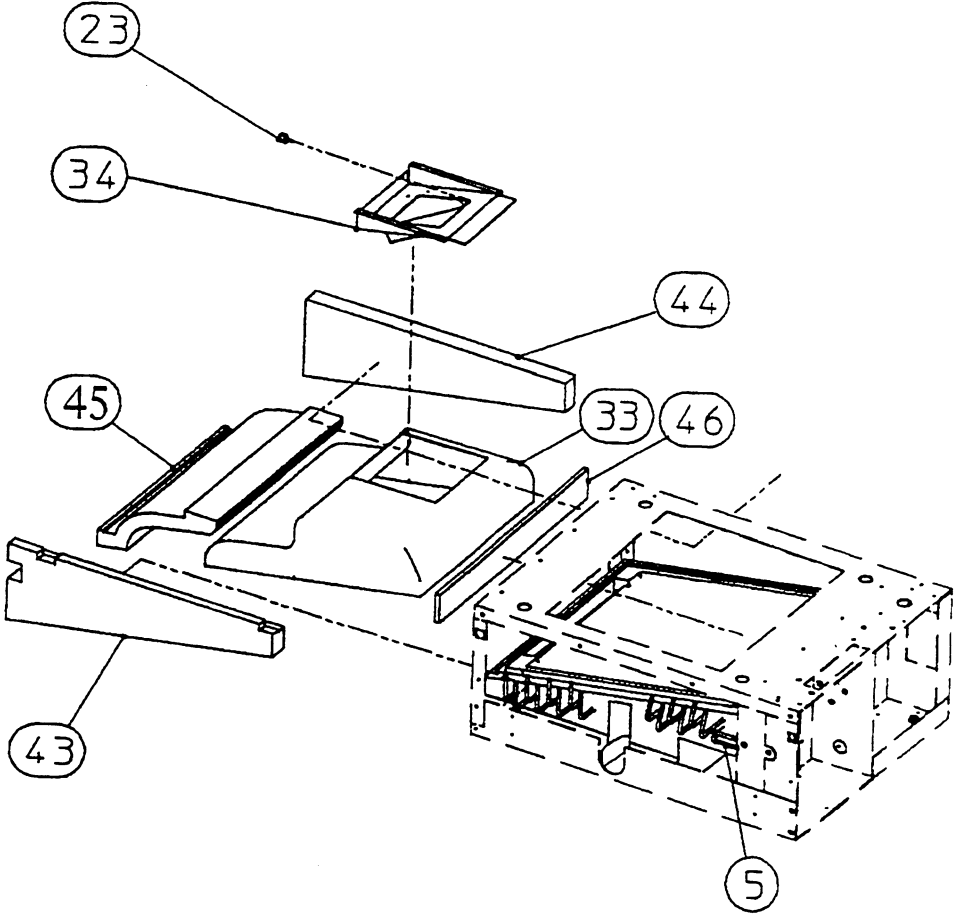
MODEL: DM-180A TITLE: B. MECHANISM ASSEMBLY								
INDEX NO.	DESCRIPTION	MATERIAL OR MODEL NUMBER	PART NUMBER	REQUIRED NUMBER				
				D-1 E-0	F-0	F-1	G-1	
F	BIN ASSEMBLY	-	1A0093A02	1	-			
		-	1A0125A02		1	-		
		-	1A0125A03			1	1	
G	CONTROL BOX ASSEMBLY	-	3A0299A02	1	-			
		-	3A0483A01		1	-		
		-	3A0678A02			1	1	
H	GEAR MOTOR ASSEMBLY	-	2A0289A01	1	-			
		-	2A0289A01		1	1	1	
J	PUSH SWITCH ASSEMBLY	-	3A0300A01	1	-			
		-	3A0490A01		1	-		
		-	3A0679A01			1	1	
1	BOTTOM PANEL	GS	1A0082-01	1	-			
		GS	1A0121-01		1	1	1	
2	CHASSIS (A)	GS	2A0262G01	1	-			
		GS	2A0530G01		1	1	1	
3	CHASSIS (B)	GS	2A0287G01	1	1	1	1	
4	BARRIER (A)	GS	3A0272-01	1	1	1	1	
5	DRAIN CIRCUIT	PVC	3A0310G01	1	1	-		
		PVC	3A0691G01			1	1	
6	DRAIN TRAP	ABS	2A0302-01	1	-			
7	INSULATION (C)	PE	4A0517-01	1	-			
8	CHASSIS (D)	GS	2A0265G02	1	-			
9	INTERIOR PANEL	GS	2A0288G01	1	-			
10	WASHER	GS	4A0655-04	4	-			
11	FRAME (A)	GS	3A0284-01	1	1	1	1	
12	FRAME (B)	GS	3A0297G01	1	-			
		GS	3A0491G01		1	1	1	

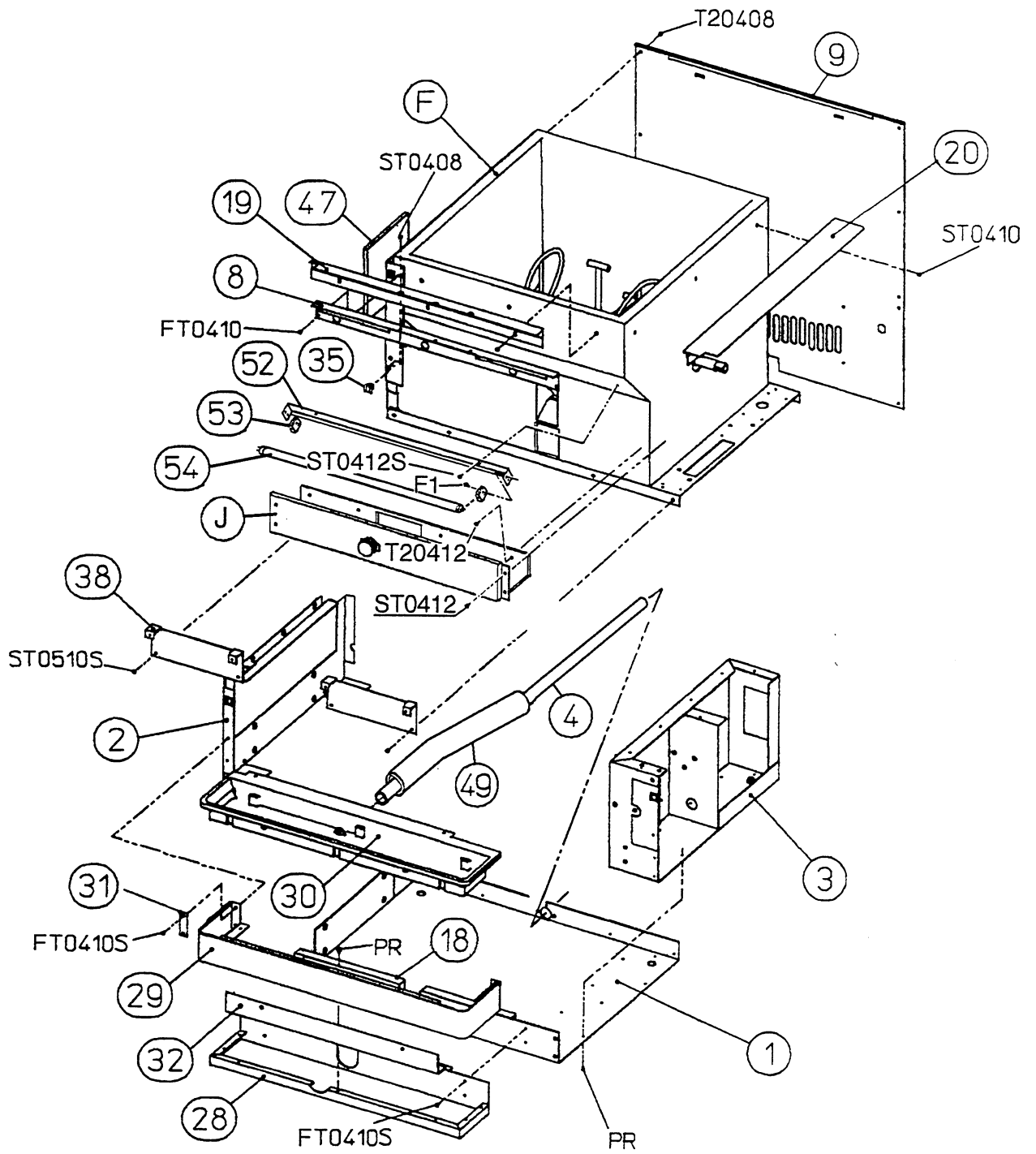
MODEL: DM-180A TITLE: B. MECHANISM ASSEMBLY										
INDEX NO.	DESCRIPTION	MATERIAL OR MODEL NUMBER	PART NUMBER	REQUIRED NUMBER						
				D-1 E-0	F-0	F-1	G-1			
13	FRONT FRAME	GS	3A0287-01	1	-					
		GS	3A0484-01		1	-				
		GS	3A0684-01				1	1		
14	REAR PANEL (A)	GS	2A0303-01	1	-					
		GS	2A0547-01		1	1	1			
15	PILLOW BRACKET	GS	3A0283-01	1	1	1	1			
16	PILLOW	ZUCP205	435553-02	1	1	1	1			
17	SPROCKET (B)	35x65T	435554-01	1	1	1	1			
18	KEY	6x22	437265-01	1	1	1	1			
19	SPOUT (B)	ABS	2A0177-01	1	1	1	1			
20	TAPER COLLAR	SS	4H0171-01	2	2	2	2			
21	DRIP CUP	ABS	2A0188-01	1	1	1	1			
22	INSULATION B	PE	4A0514-01	2	2	2	2			
23	SPOUT (A)	ABS	2A0176-01	1	1	1	1			
24	THUMBSCREW	ABS	415949G01	4	4	4	4			
25	COLLAR-SHUTTER	POM	435533-01	1	1	1	1			
26	SHUTTER (A)	AC	2A0178-01	1	1	1	1			
27	SHAFT-SHUTTER	SS	328648-02	1	1	1	1			
28	SNAP PIN	SSP-6	715S-0006	1	1	1	1			
29	DRAIN PANEL MOUNT	GS	2A0273-01	1	1	1	1			
30	DRAIN PANEL (A)	SS	2A0278-01	1	1	1	1			
31	DRAIN PAN ASSEMBLY	ABS	2A0312G01	1	1	1	1			
32	BRACE (C)	SS	4A0656-01	2	2	2	2			
33	BRACKET (B)	GS	3A0393-01	1	1	1	1			
34	LATCH	8501-00-59	4A0508-03	4	4	4	4			
35	BUSHING	SB-1093-13	420470-12	2	2	2	2			
36	CHAIN	35x142	435797-02	1	1	1	1			
37	BRACKET (D)	GS	4A0478-01	2	2	-				
		GS	4A1086-01				2	2		



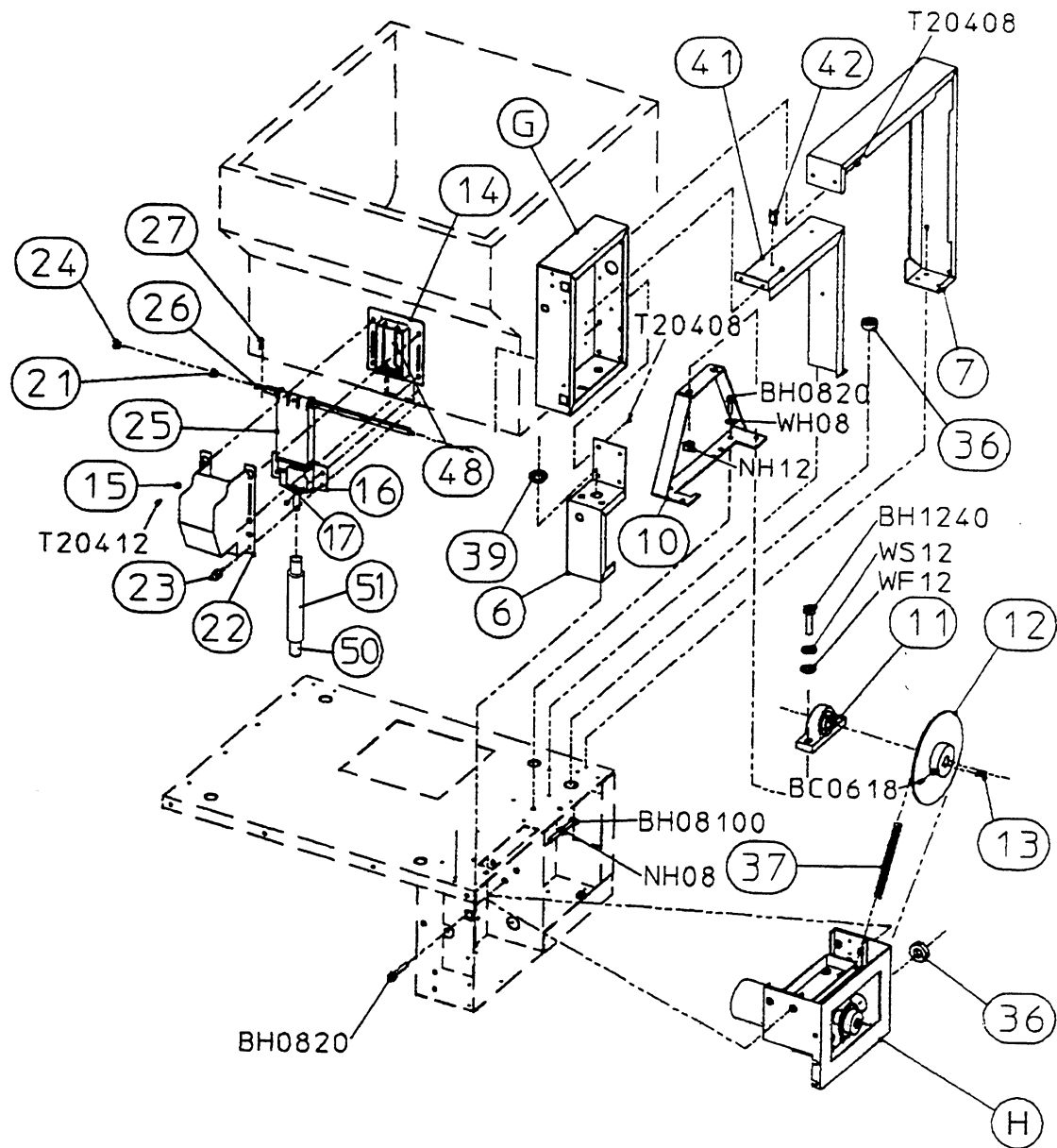


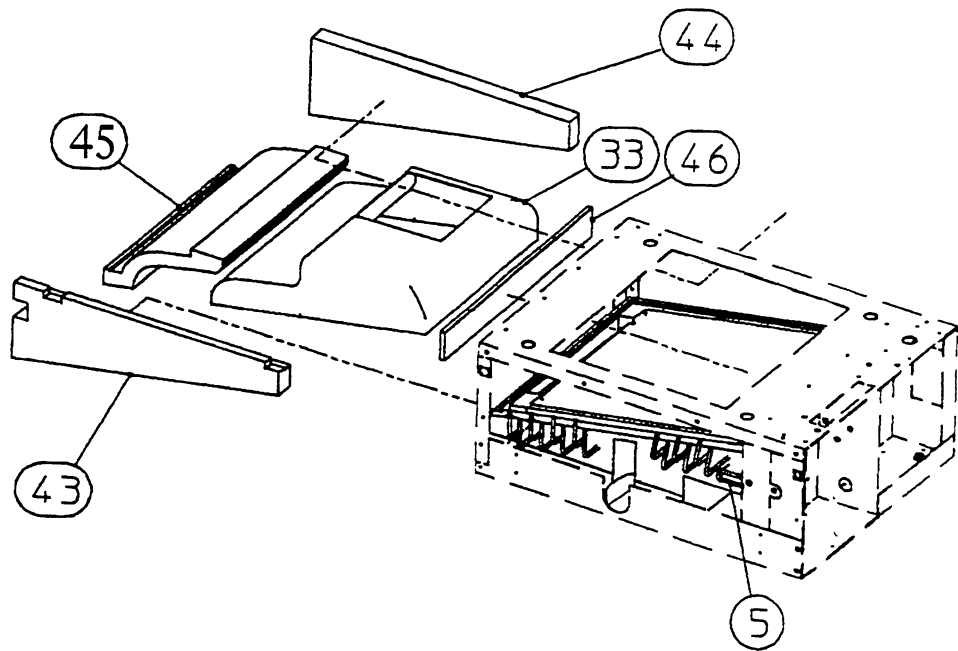






F1 - Pan Head Tapping Screw 3 x 16

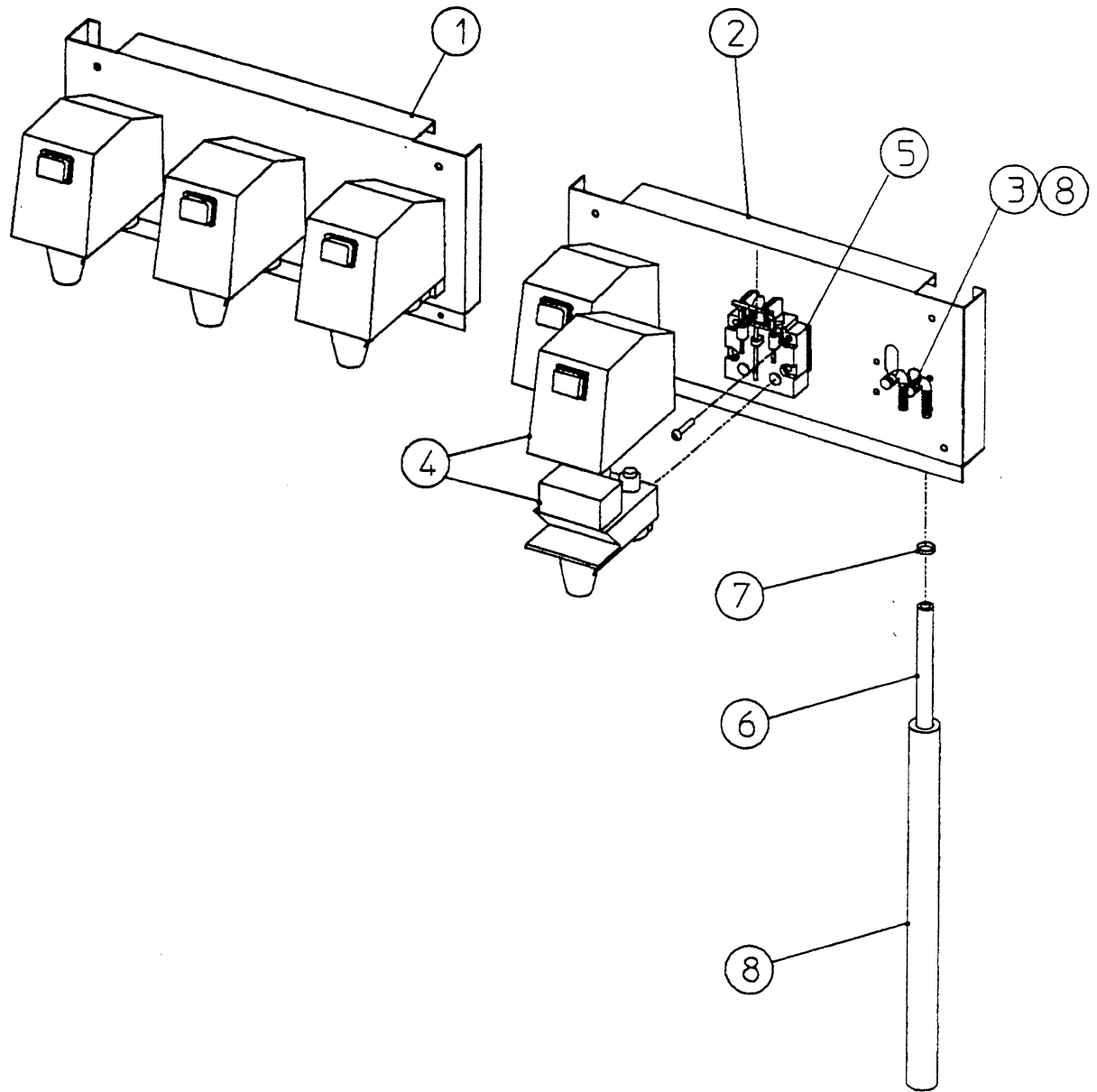




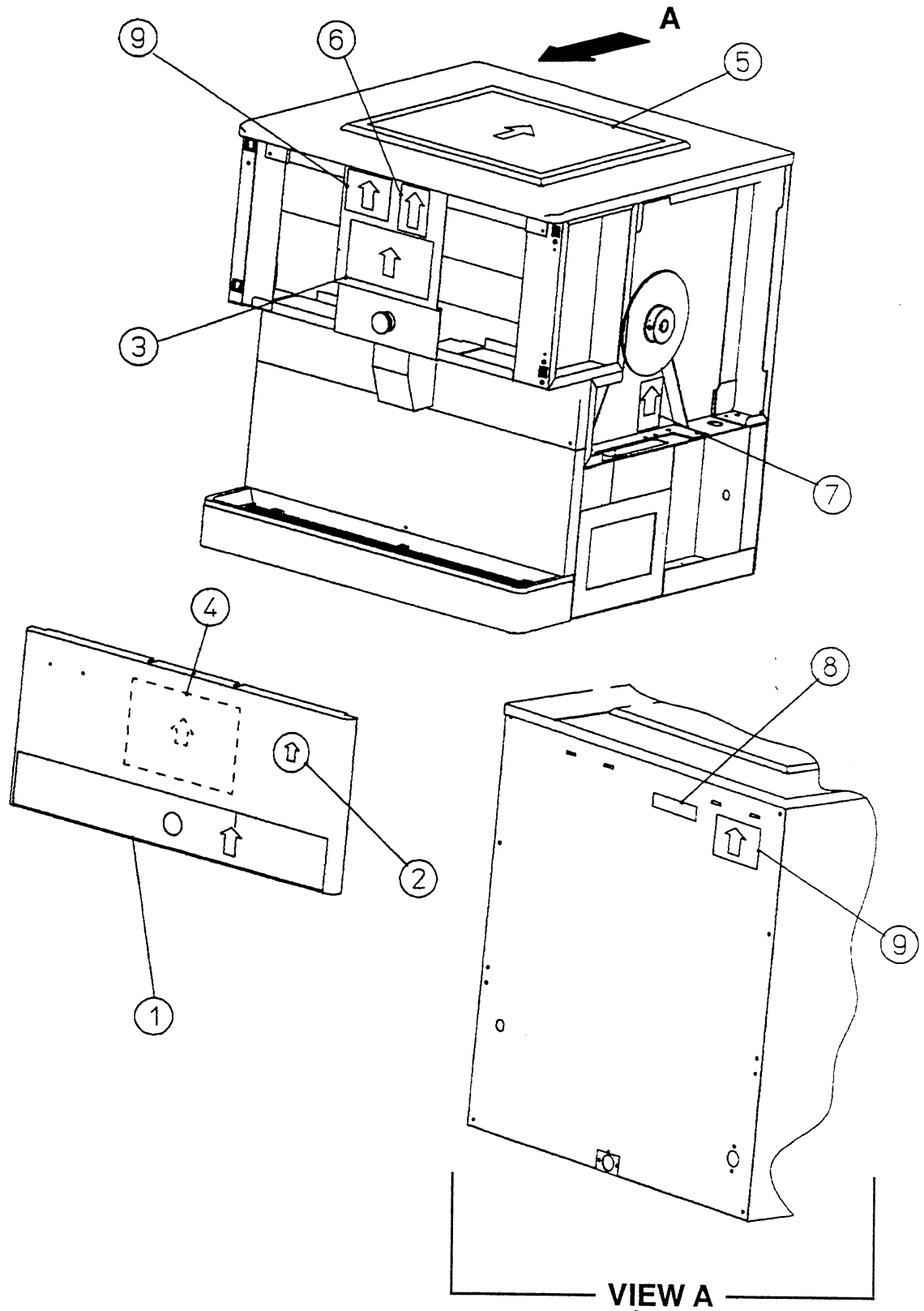
MODEL: DM-180AX TITLE: B. MECHANISM ASSEMBLY									
INDEX NO.	DESCRIPTION	MATERIAL OR MODEL NUMBER	PART NUMBER	REQUIRED NUMBER					
				E-2	G-1				
F	BIN ASSEMBLY	-	1A0125A01	1	-				
		-	1A0167A01		1				
G	CONTROL BOX ASSEMBLY	-	3A0483A01	1	-				
		-	3A0678A01		1				
H	GEAR MOTOR ASSEMBLY	-	2A0289A01	1	1				
J	PUSH SWITCH ASSEMBLY	-	3A0490A01	1	-				
		-	3A0679A01		1				
1	BOTTOM PANEL	GS	1A0121-01	1	1				
2	CHASSIS (A)	GS	2A0530G01	1	1				
3	CHASSIS (B)	GS	2A0287G01	1	1				
4	DRAIN CIRCUIT	PVC	3A0298G01	1	-				
	VINYL HOSE	L=1200	4A0658L01		1				
5	COLD PLATE ASSEMBLY	AL, PUR	2A0537G01	1	1				
6	FRAME (A)	GS	3A0284-01	1	1				
7	FRAME (B)	GS	3A0491G01	1	1				
8	FRONT FRAME	GS	3A0484-01	1	-				
		GS	3A0684-01		1				
9	REAR PANEL (A)	GS	2A0546-01	1	1				
10	PILLOW BRACKET	GS	3A0283-01	1	1				
11	PILLOW	ZUCP205	435553-02	1	1				
12	SPROCKET (B)	35 x 65T	435554-01	1	1				
13	KEY	6 x 22	437265-01	1	1				
14	SPOUT (B)	ABS	2A0177-01	1	1				
15	TAPER COLLAR	SS	4H0171-01	2	2				
16	DRIP CUP	ABS	2A0188-01	1	1				
17	INSULATION B	PE	4A0514-01	2	2				
18	BOTTOM PANEL INSULATION	PE	3A0492-01	1	1				
19	FRONT TOP SEAL	SS	3A0487-01	1	-				
		SS	3A0685-01		1				

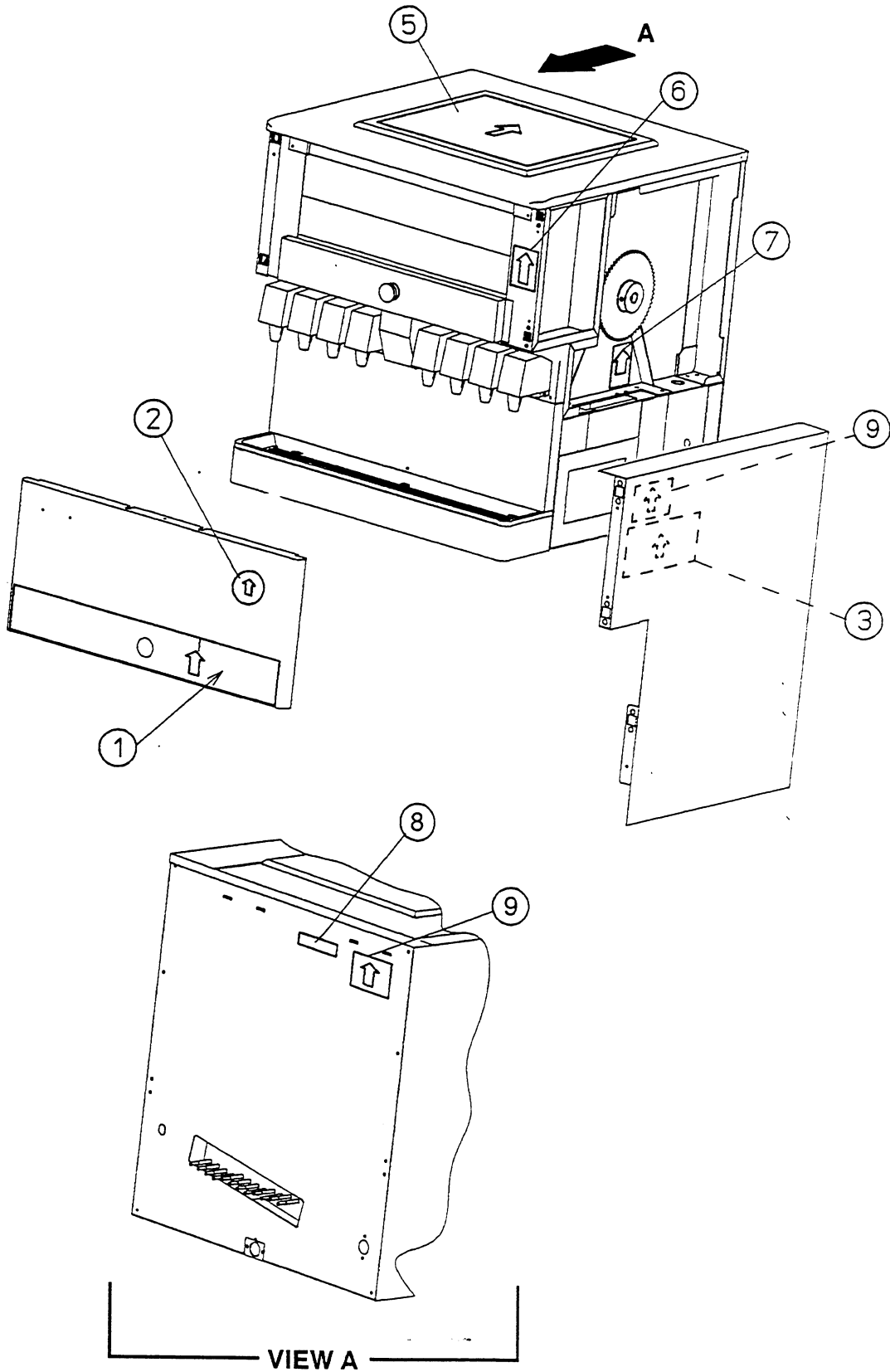
MODEL: DM-180AX TITLE: B. MECHANISM ASSEMBLY									
INDEX NO.	DESCRIPTION	MATERIAL OR MODEL NUMBER	PART NUMBER	REQUIRED NUMBER					
				E-2	G-1				
20	RIGHT TOP SEAL	SS	3A0486-01	1	-				
		SS	3A0686-01		1				
21	SPACER	ABS	4A0822-01	1	1				
22	SPOUT (A)	ABS	2A0176-01	1	1				
23	THUMBSCREW	ABS	4A5949G01	4	2				
24	COLLAR - SHUTTER	POM	435533-01	1	1				
25	SHUTTER (A)	AC	2A0178-01	1	1				
26	SHAFT - SHUTTER	SS	328648-02	1	1				
27	SNAP PIN	SSP-6	715S-0006	1	1				
28	DRAIN PANEL MOUNT	GS	2A0273-01	1	1				
29	DRAIN PANEL (A)	SS	2A0278-01	1	1				
30	DRAIN PAN ASSEMBLY	ABS	2A0312G01	1	1				
31	BRACE (C)	SS	4A0656-01	2	2				
32	BRACKET (B)	GS	3A0393-01	1	1				
33	CHUTE	ABS	1A0064-01	1	-				
		ABS	1A0171-01		1				
34	GUIDE	SS	3A0302G01	1	-				
35	LATCH	8501-00-59	4A0508-03	4	4				
36	BUSHING	SB-1093-13	420470-12	2	2				
37	CHAIN	35 x 142	435797-02	1	1				
38	BRACKET (D)	GS	4A0478-01	2	-				
		GS	4A1086-01		2				
39	BUSHING	SB-625-8	420470-01	1	1				
40	PAD	ABS	436580-01	1	-				
41	BARRIER (B)	GS	2A0420-01	1	1				
42	WIRE SADDLE	VWS4274-C	4A0338-03	3	3				
43	FRONT INSULATION	PS	3A0416-01	1	1				
44	REAR INSULATION	PS	3A0417-01	1	1				
45	CHUTE INSULATION	PS	3A0419-01	1	1				
46	RIGHT INSULATION	PS	3A0418-01	1	1				

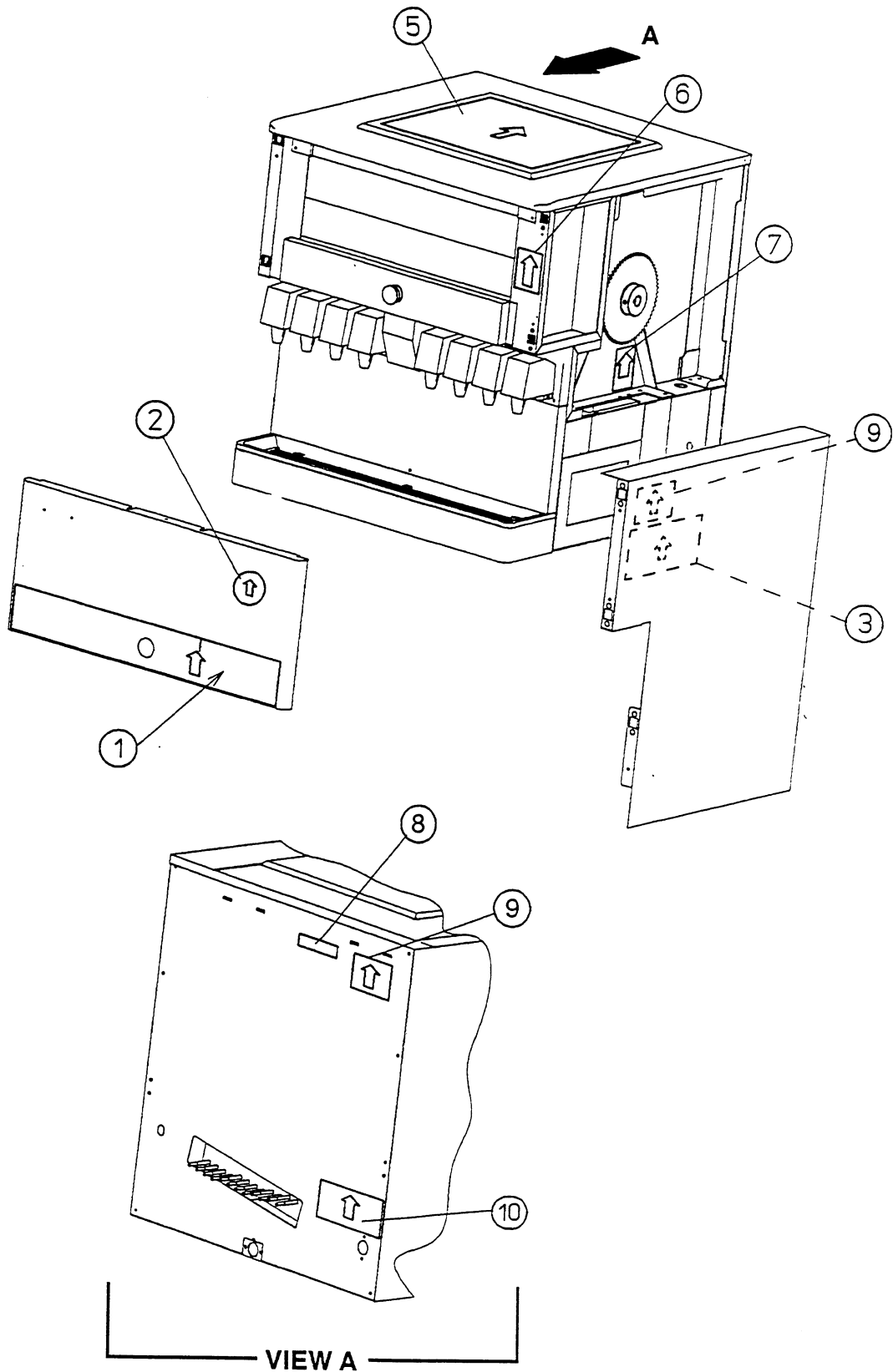




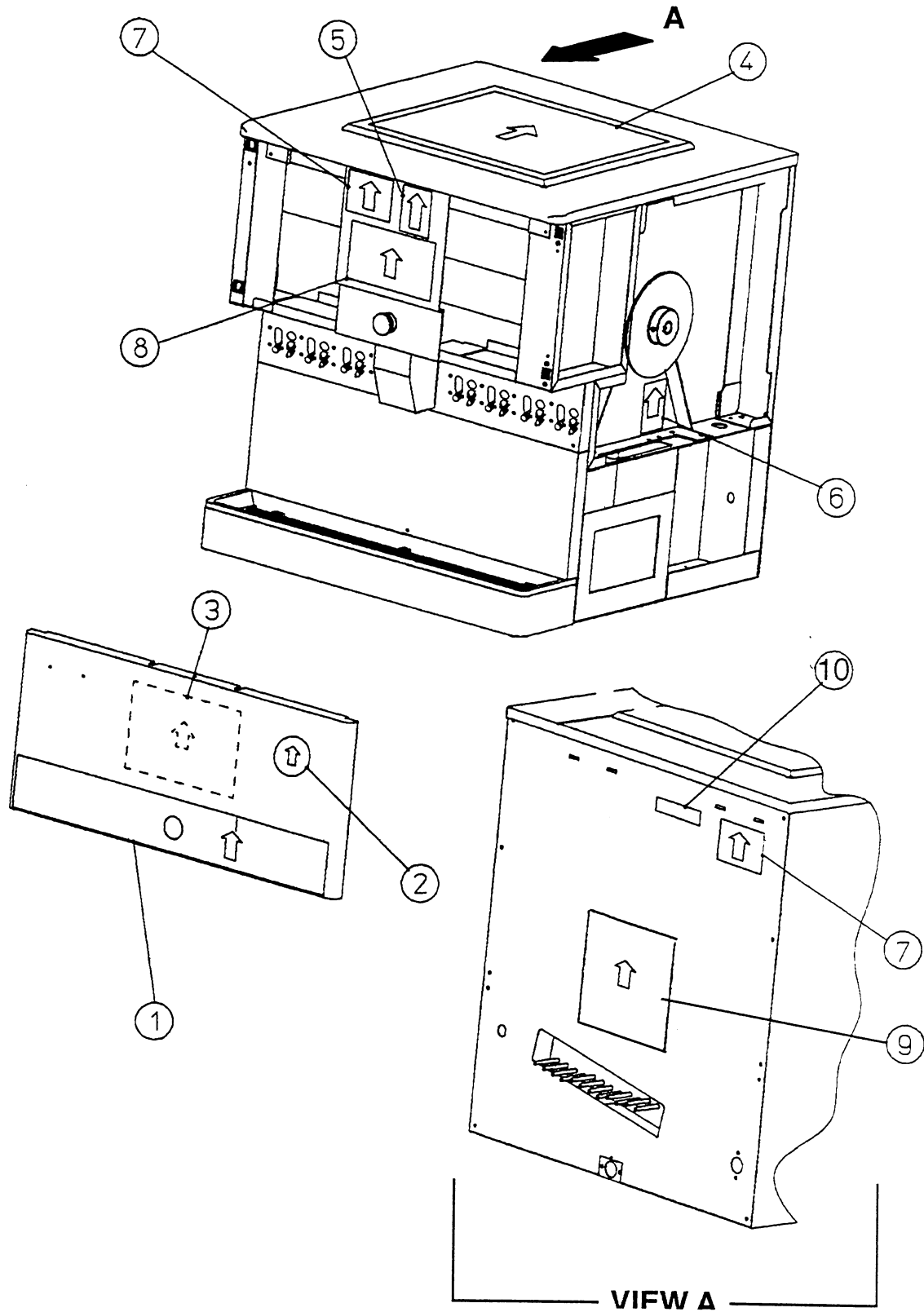


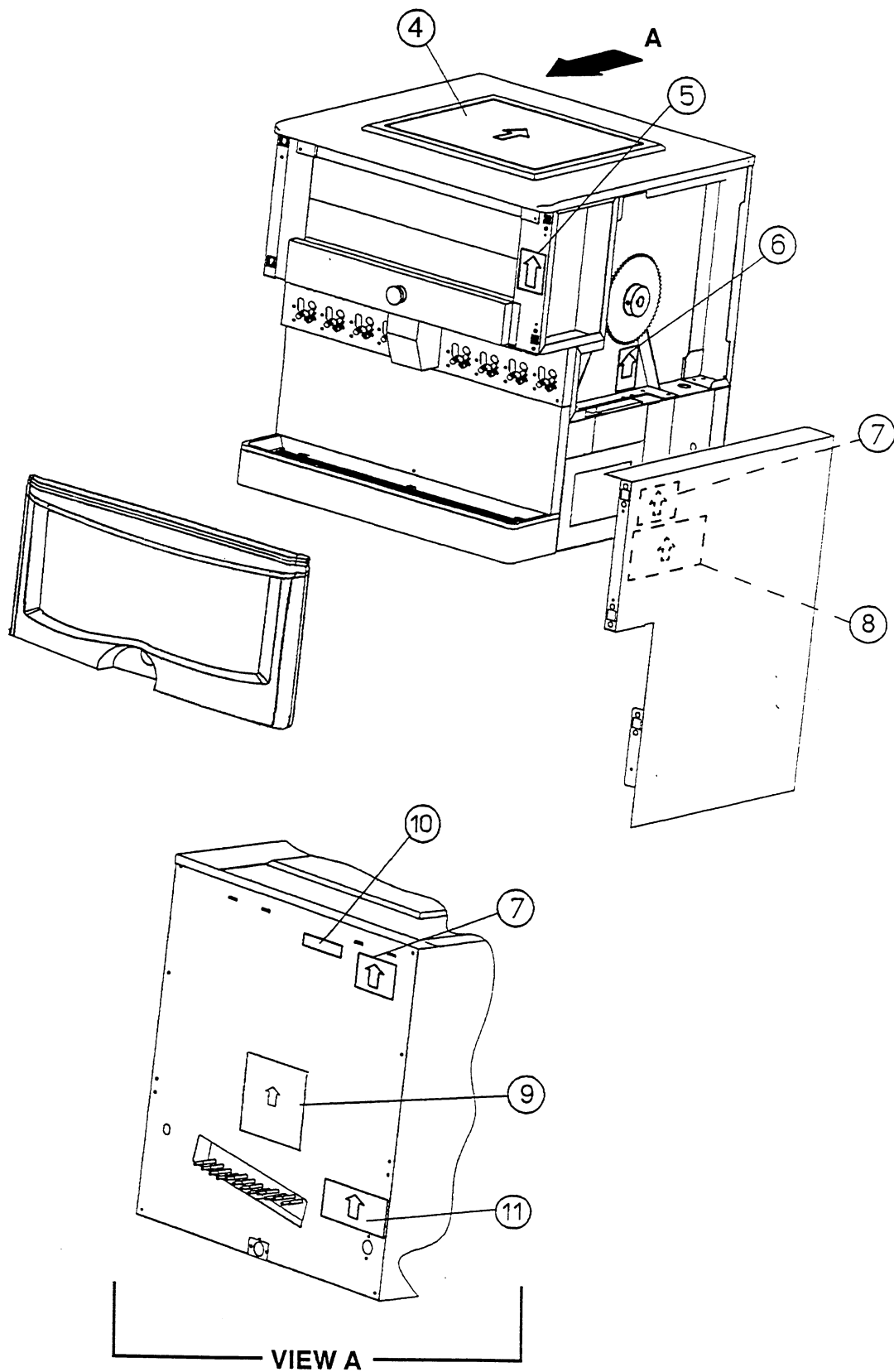




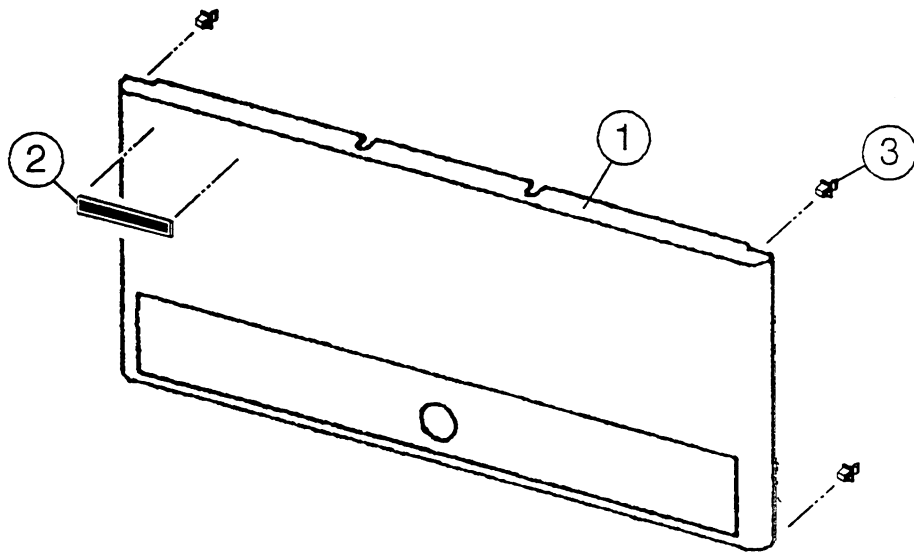




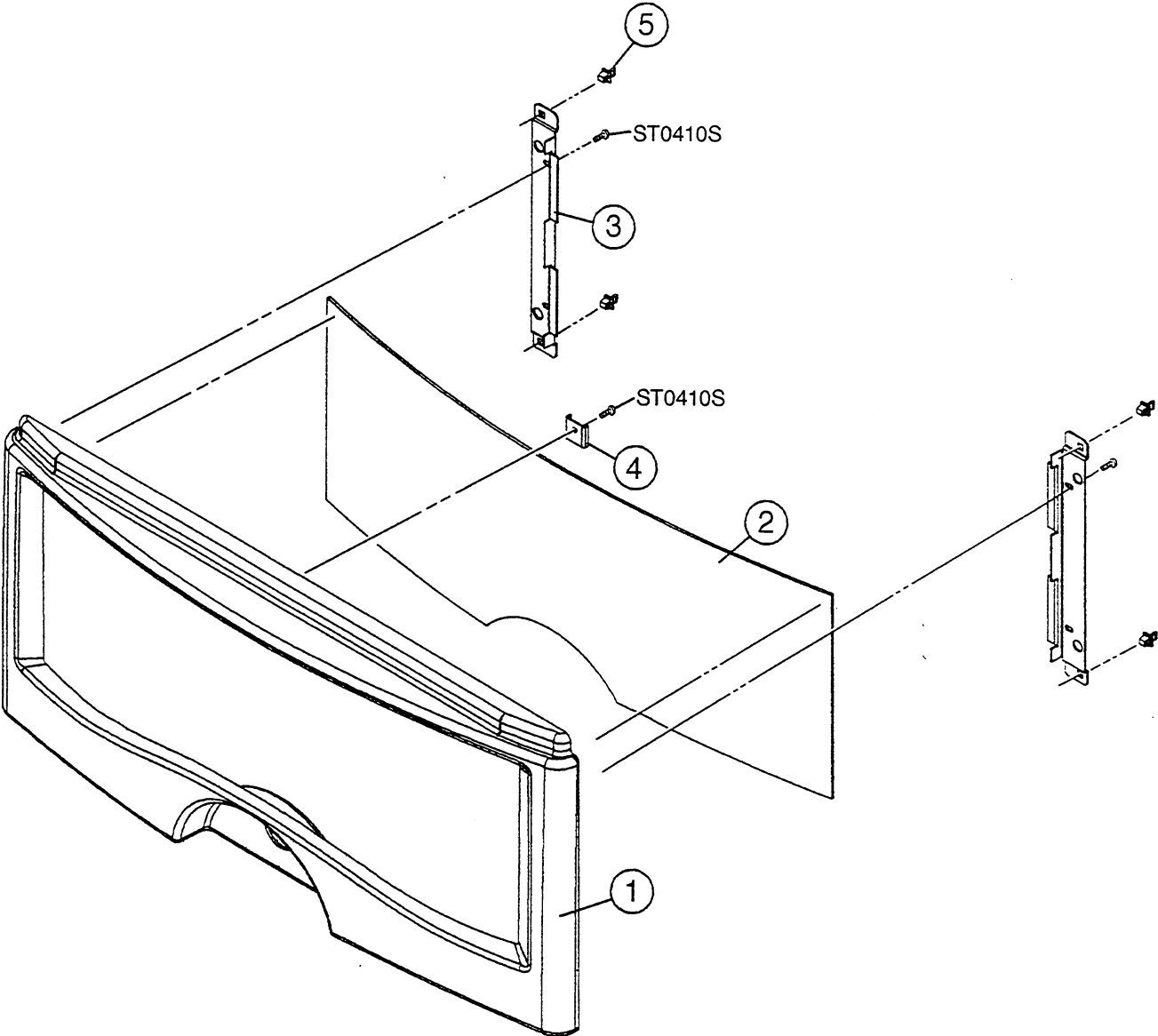




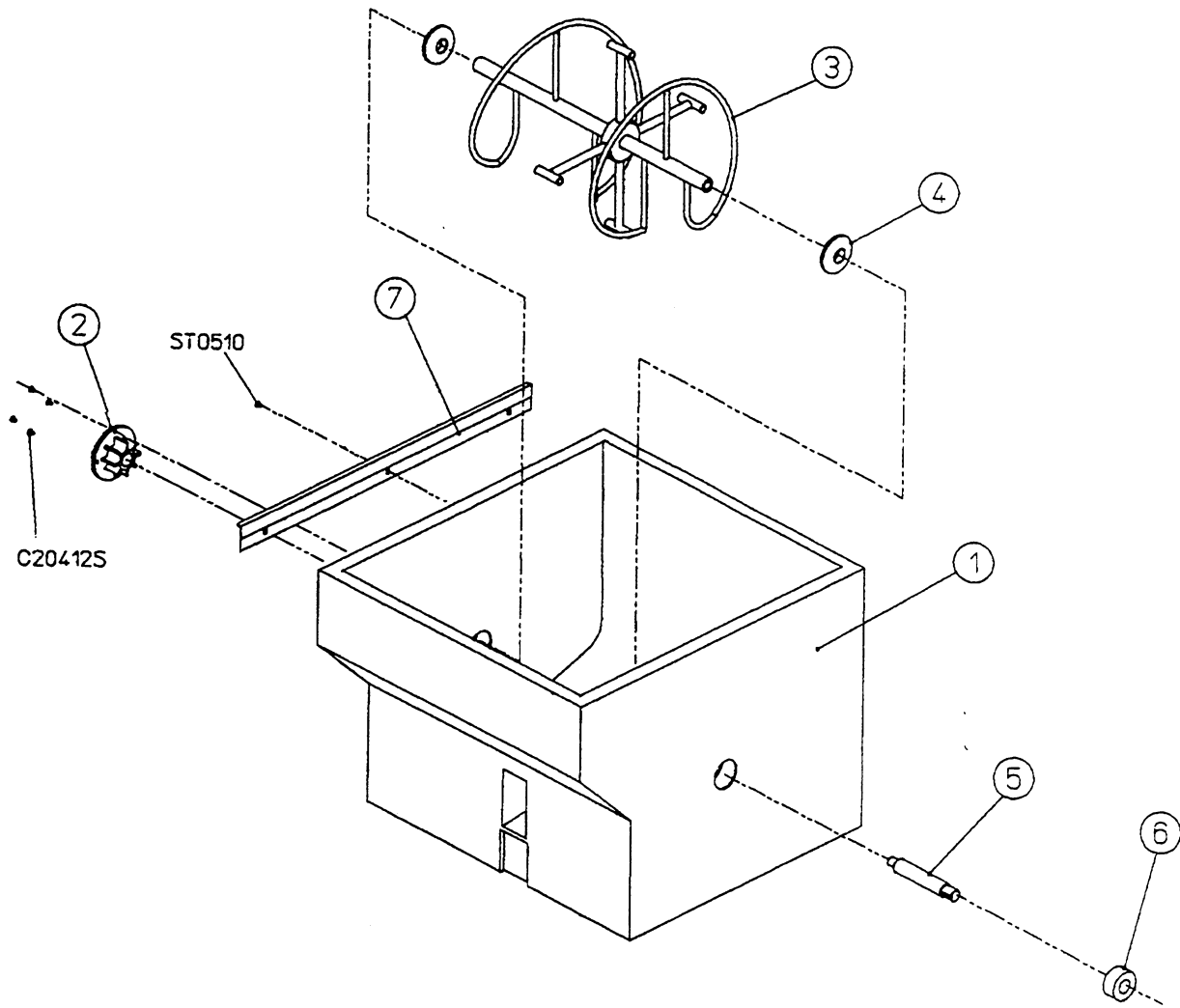


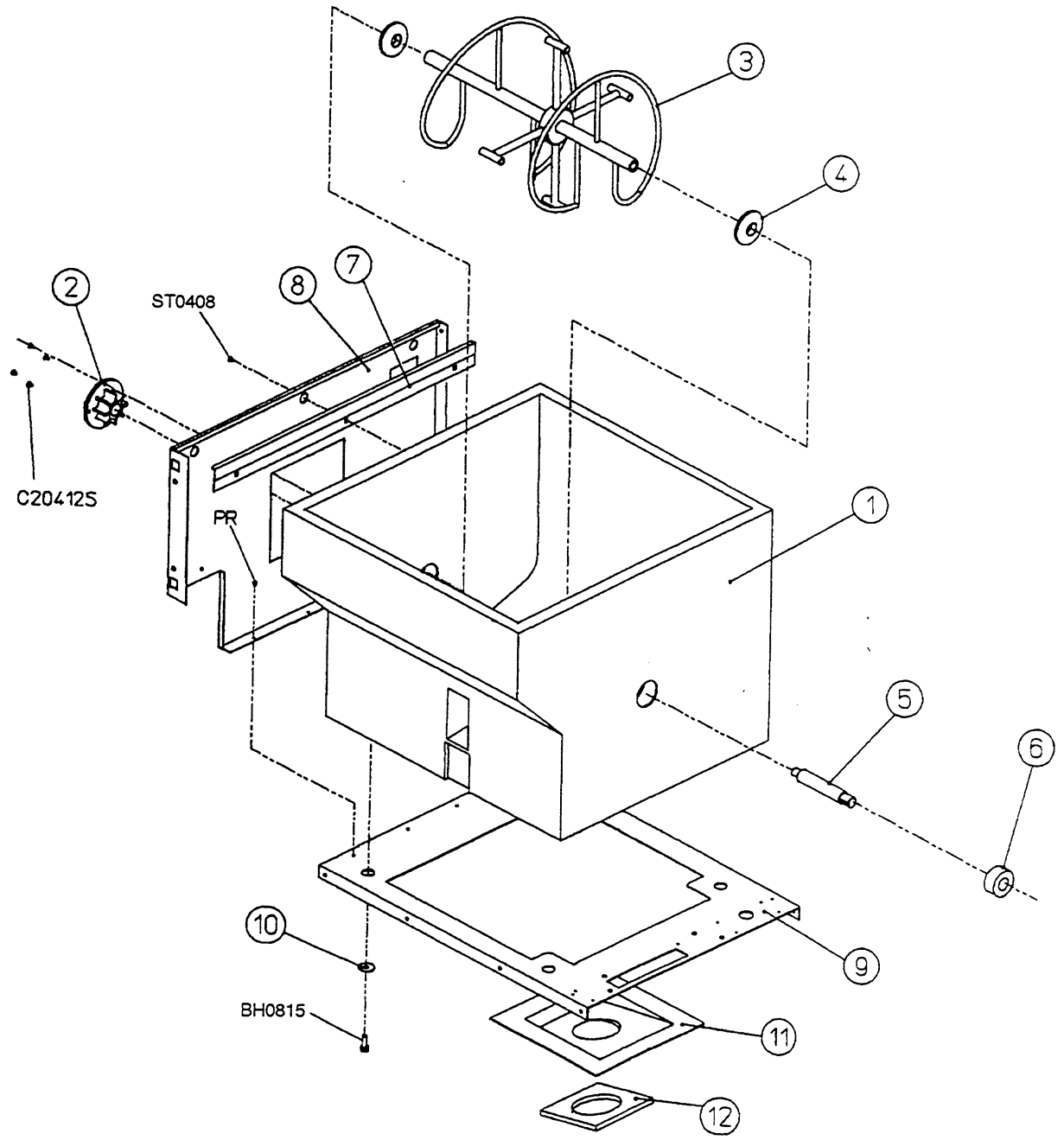


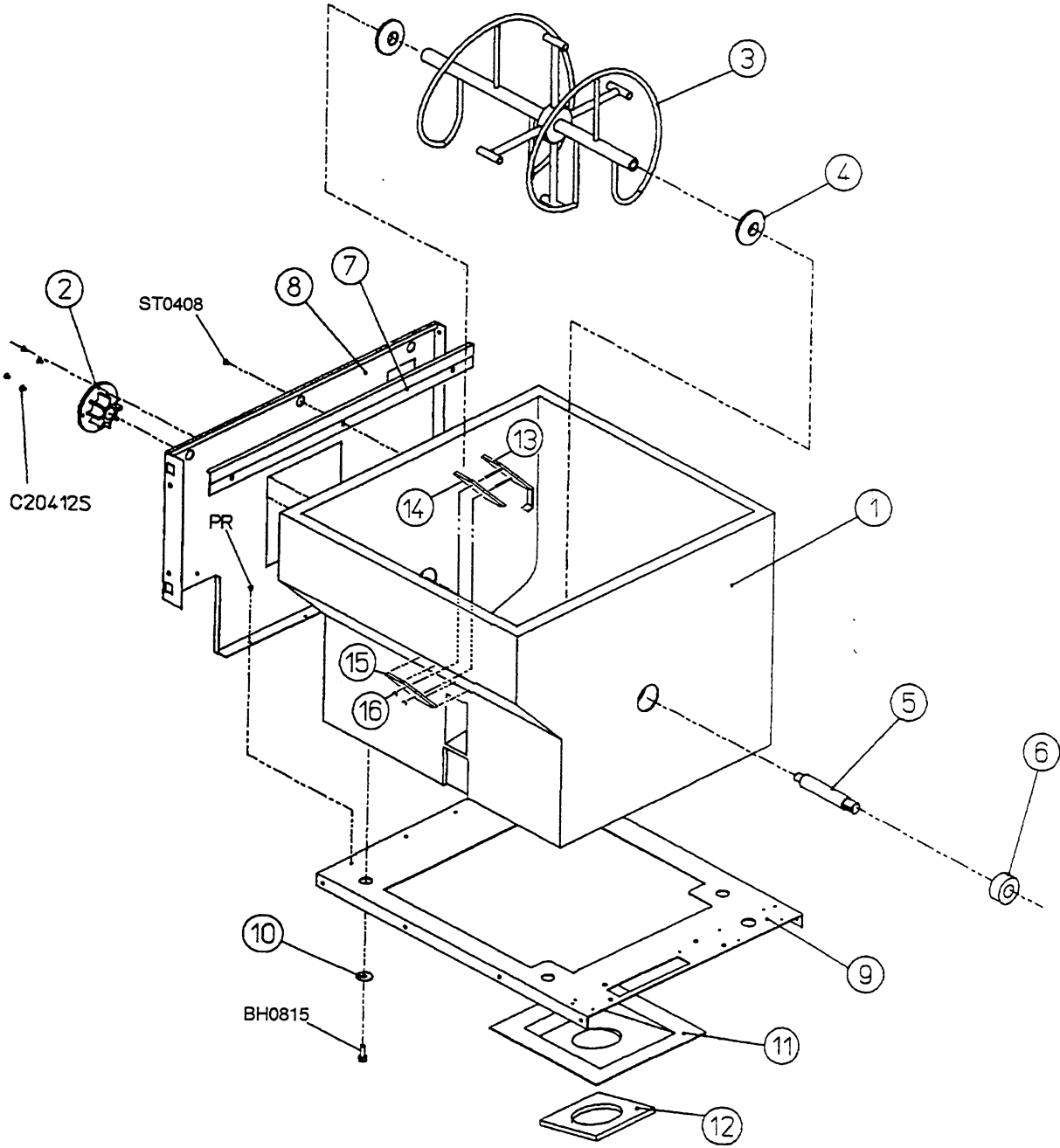






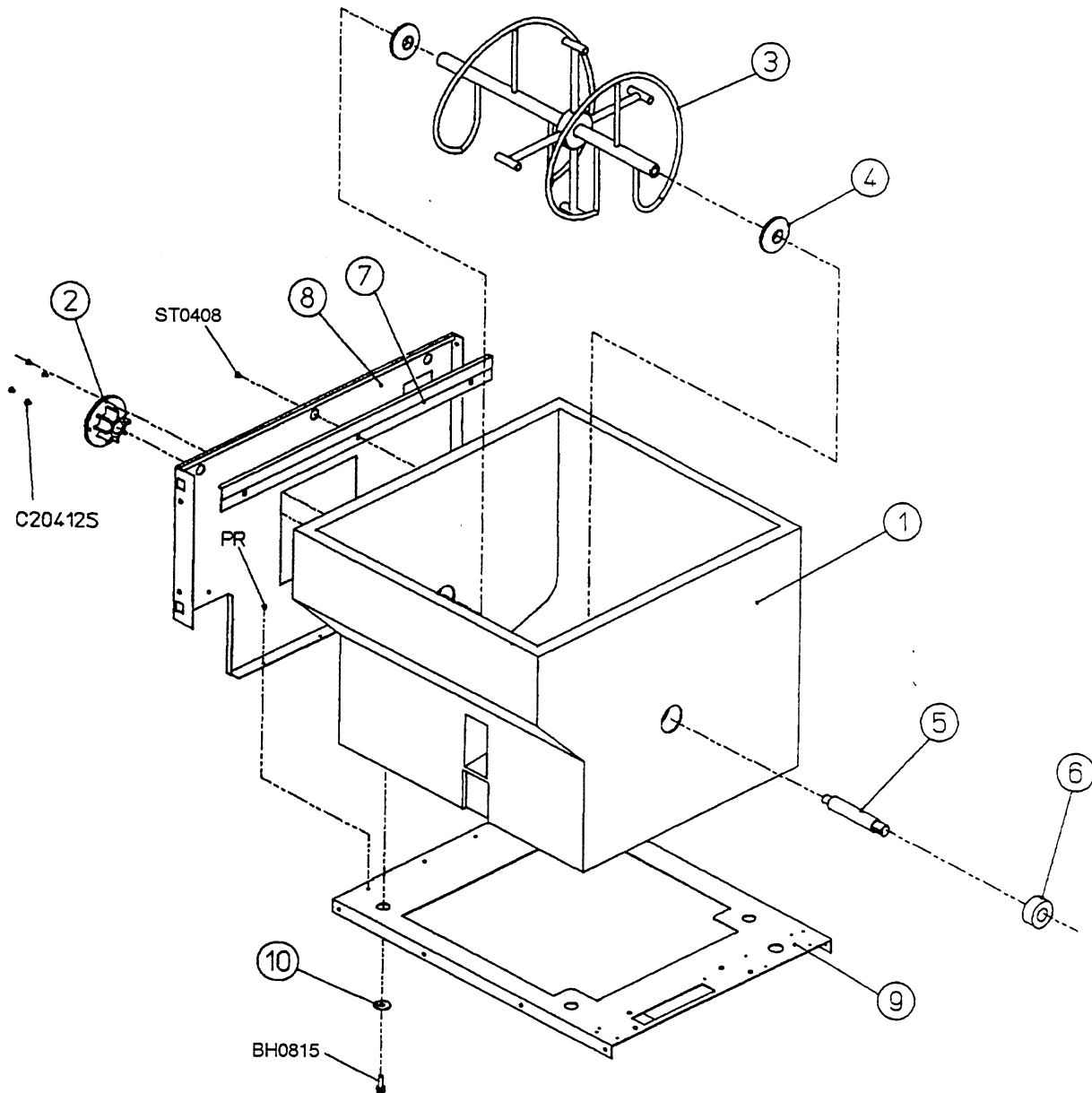






**MODEL: DM-180A    TITLE: F. BIN ASSEMBLY**

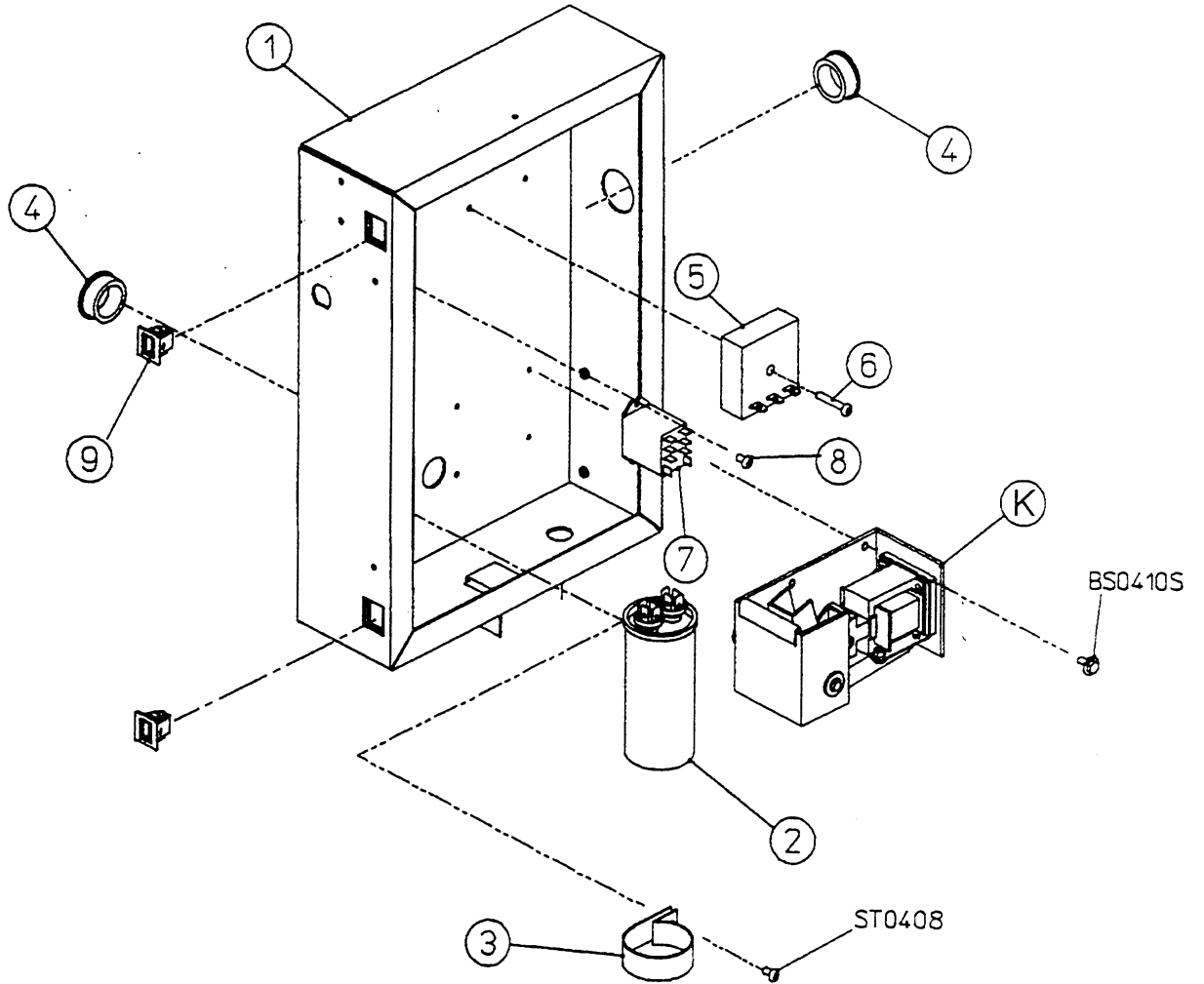
INDEX NO.	DESCRIPTION	MATERIAL OR MODEL NUMBER	PART NUMBER	REQUIRED NUMBER					
				D-1 E-0	F-0	F-1	G-1		
1	BIN	PE, PUR	1A0099G02	1	-				
		PE, PUR	1A0124G02		1	1	1		
2	HOLDER AGITATOR	POM	326441-01	1	1	1	1		
3	AGITATOR	SS	2A0168G01	1	1	1	1		
4	SEAL (B)	EPDM	435558-01	2	2	2	2		
5	DRIVE SHAFT	SS	435551-01	1	1	1	1		
6	SHAFT INSULATION	PE	4A0686-01	1	1	1	1		
7	LEFT TOP SEAL	SS	3A0477-01		1	1	1		
8	INTERIOR PANEL	GS	2A0543G01		1	-			
		GS	2A0735G01			1	1		
9	CHASSIS (D)	GS	2A0540G01		1	1	1		
10	WASHER	PS	4A0655-04		4	4	4		
11	DRAIN TRAP	ABS	2A0302-01		1	1	1		
12	INSULATION (C)	PE	4A0517-01		1	1	1		
13	FLOW RATE BRACKET	SS	4A0871G01			1	1		
14	SEAL	SANTOPRENE	4A0873-01			1	1		
15	RESTRICTOR PLATE	SS	4A0874-01			1	1		
16	WING NUT	SS	7E12-0600			2	2		

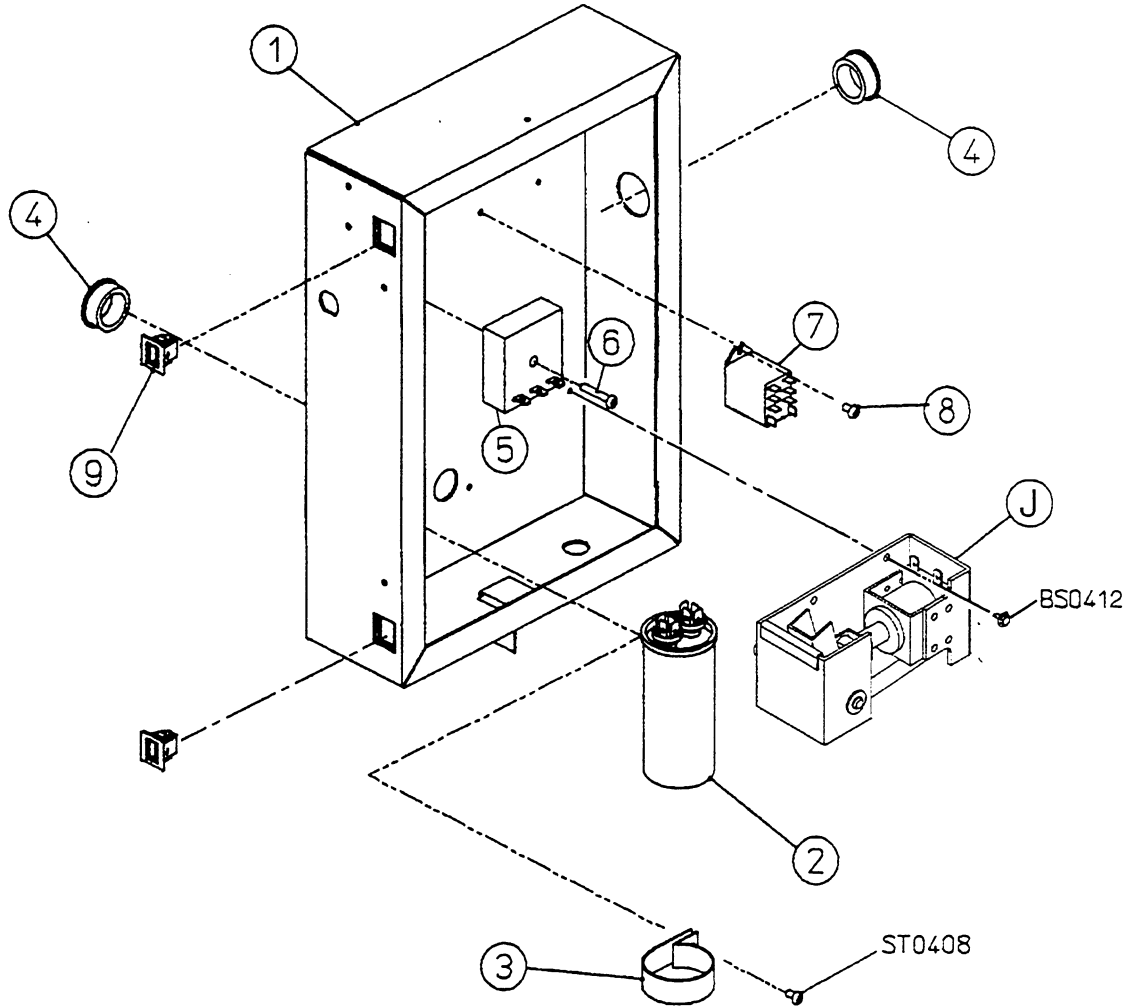


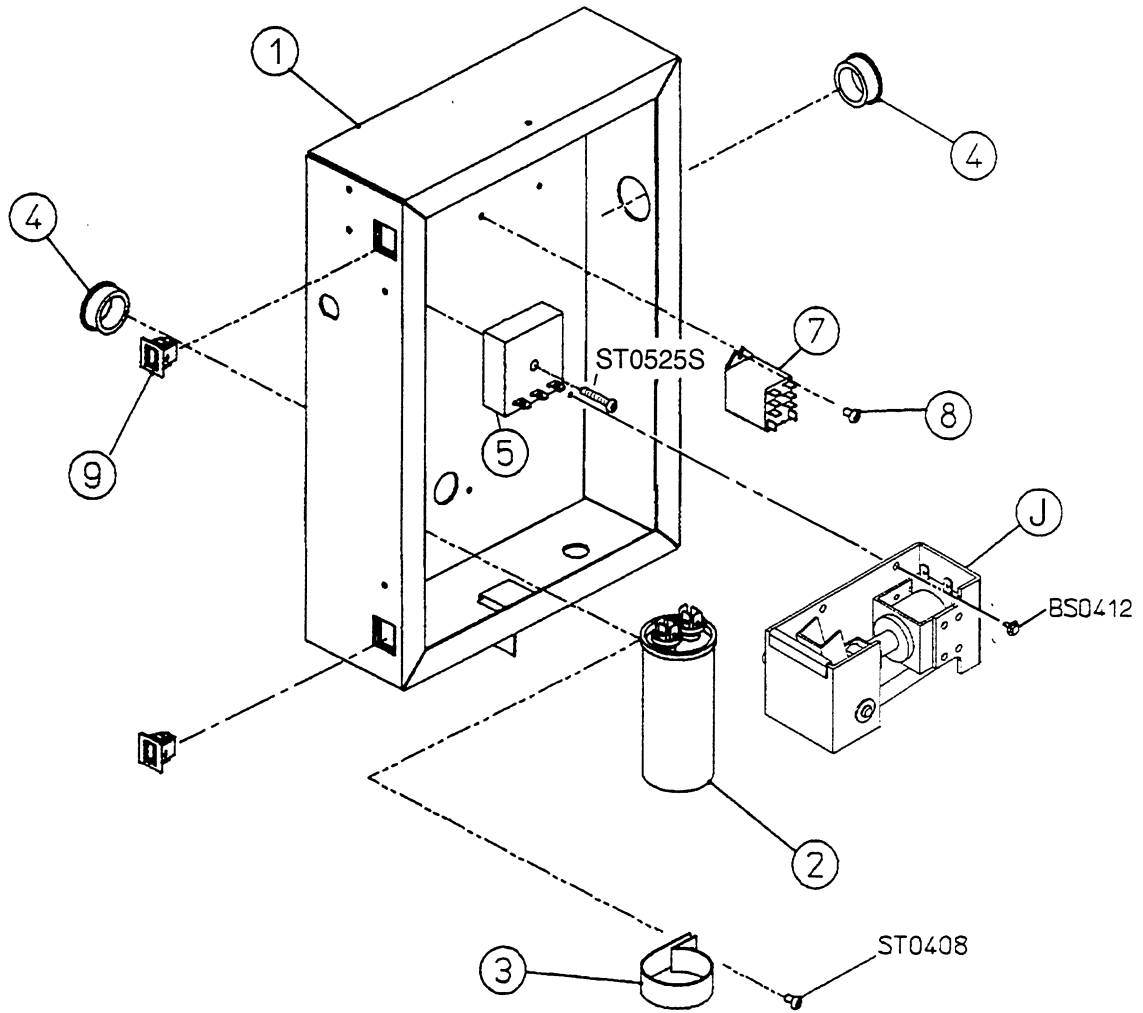


**MODEL: DM-180AX      TITLE: F. BIN ASSEMBLY**

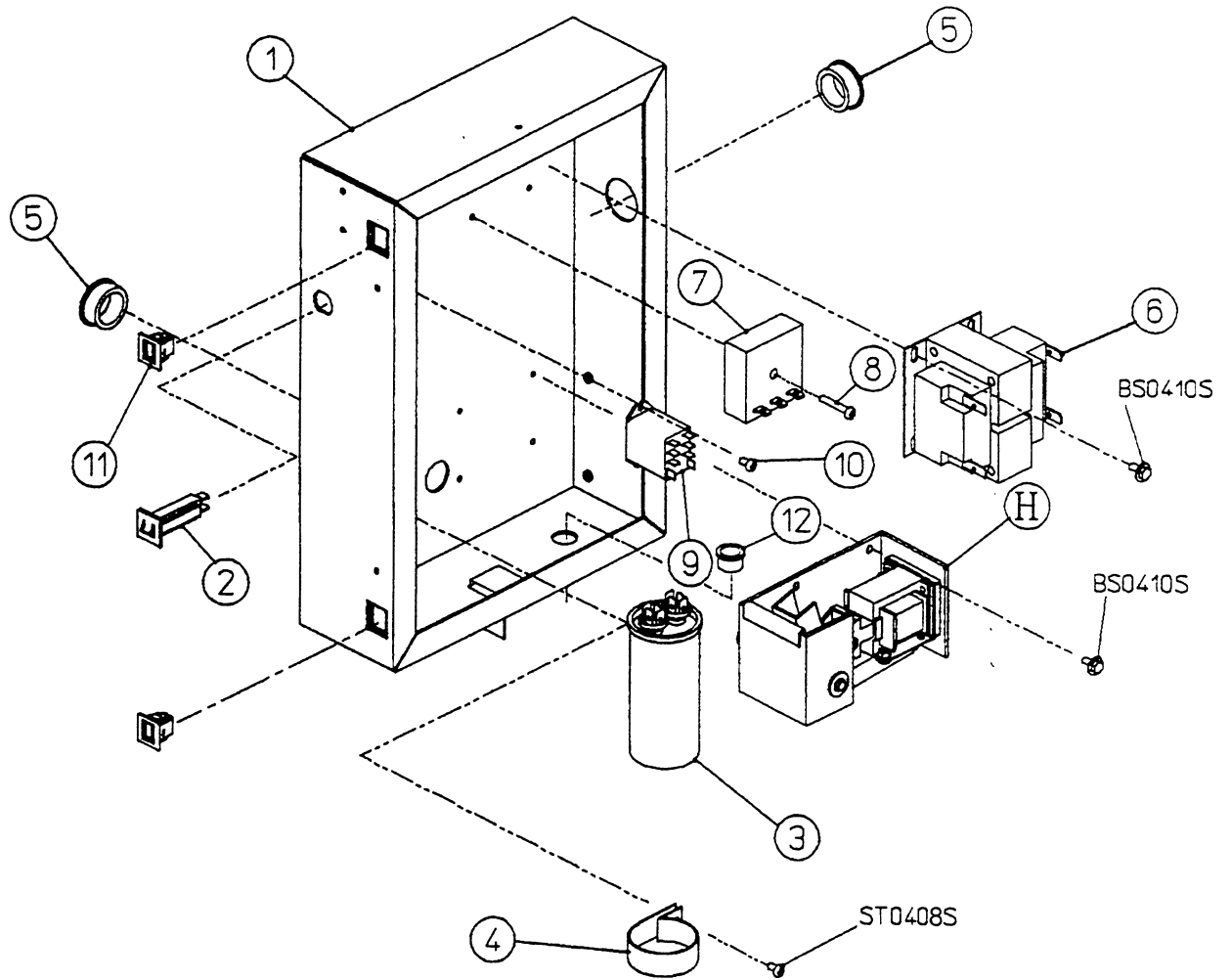
INDEX NO.	DESCRIPTION	MATERIAL OR MODEL NUMBER	PART NUMBER	REQUIRED NUMBER						
				E-2	G-1					
1	BIN	PE, PUR	1A0124G01	1	-					
		PE, PUR	1A0168G01		1					
2	HOLDER AGITATOR	POM	326441-01	1	1					
3	AGITATOR	SS	2A0168G01	1	1					
4	SEAL (B)	EPDM	435558-01	2	2					
5	DRIVE SHAFT	SS	435551-01	1	1					
6	SHAFT INSULATION	PE	4A0686-01	1	1					
7	LEFT TOP SEAL	SS	3A0477-01		1					
8	INTERIOR PANEL	GS	2A0543G01	1	-					
		GS	2A0735G01		1					
9	CHASSIS (D)	GS	2A0540G01		1					
10	WASHER	PS	4A0655-01		x4					
		PS	4A0655-04		o4					
13	FLOW RATE BRACKET	SS	4A0871G01		1					
14	SEAL	SANTOPRENE	4A0873-01		1					
15	RESTRICTOR PLATE	SS	4A0874-01		1					
16	WING NUT	SS	7E12-0600		2					

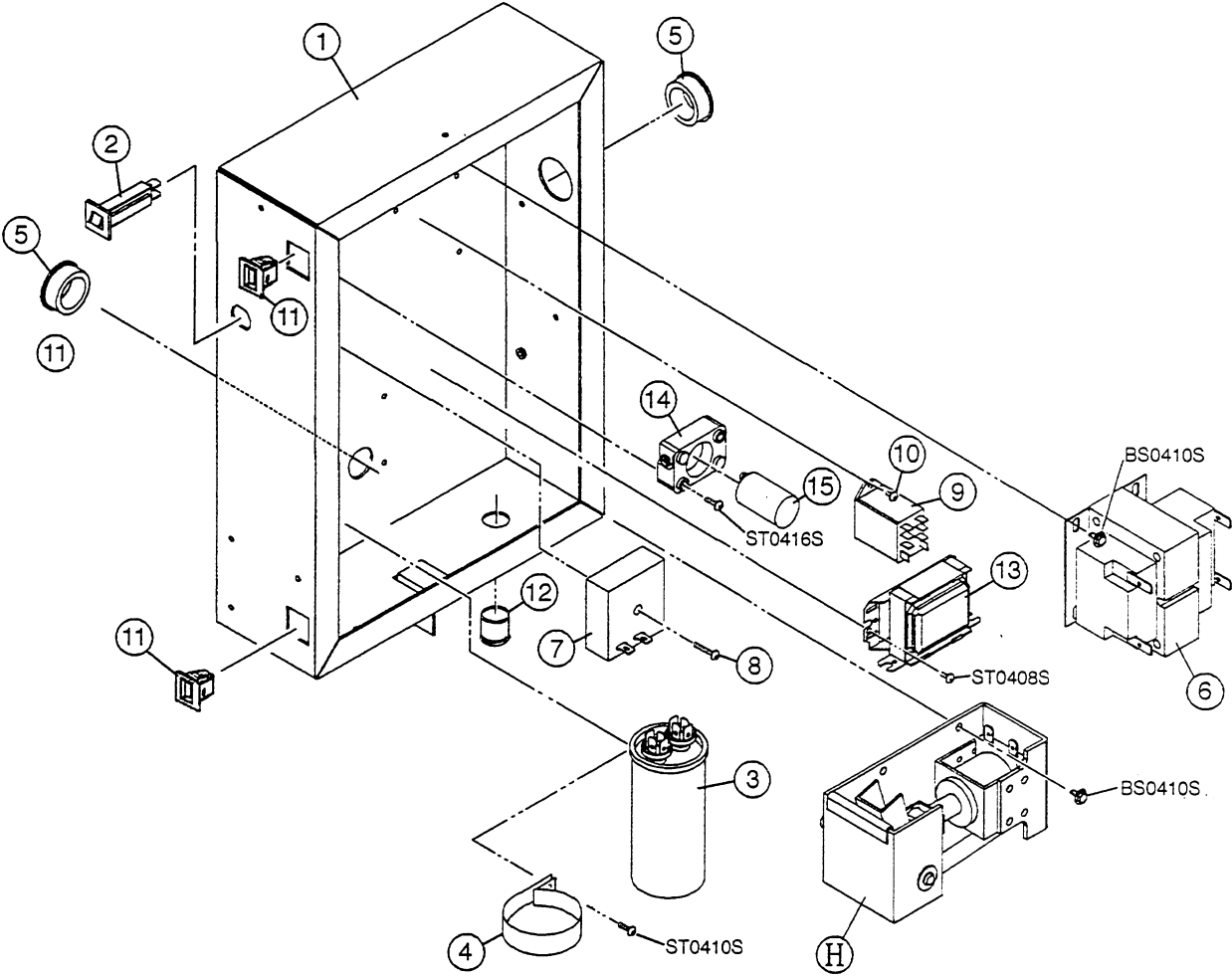






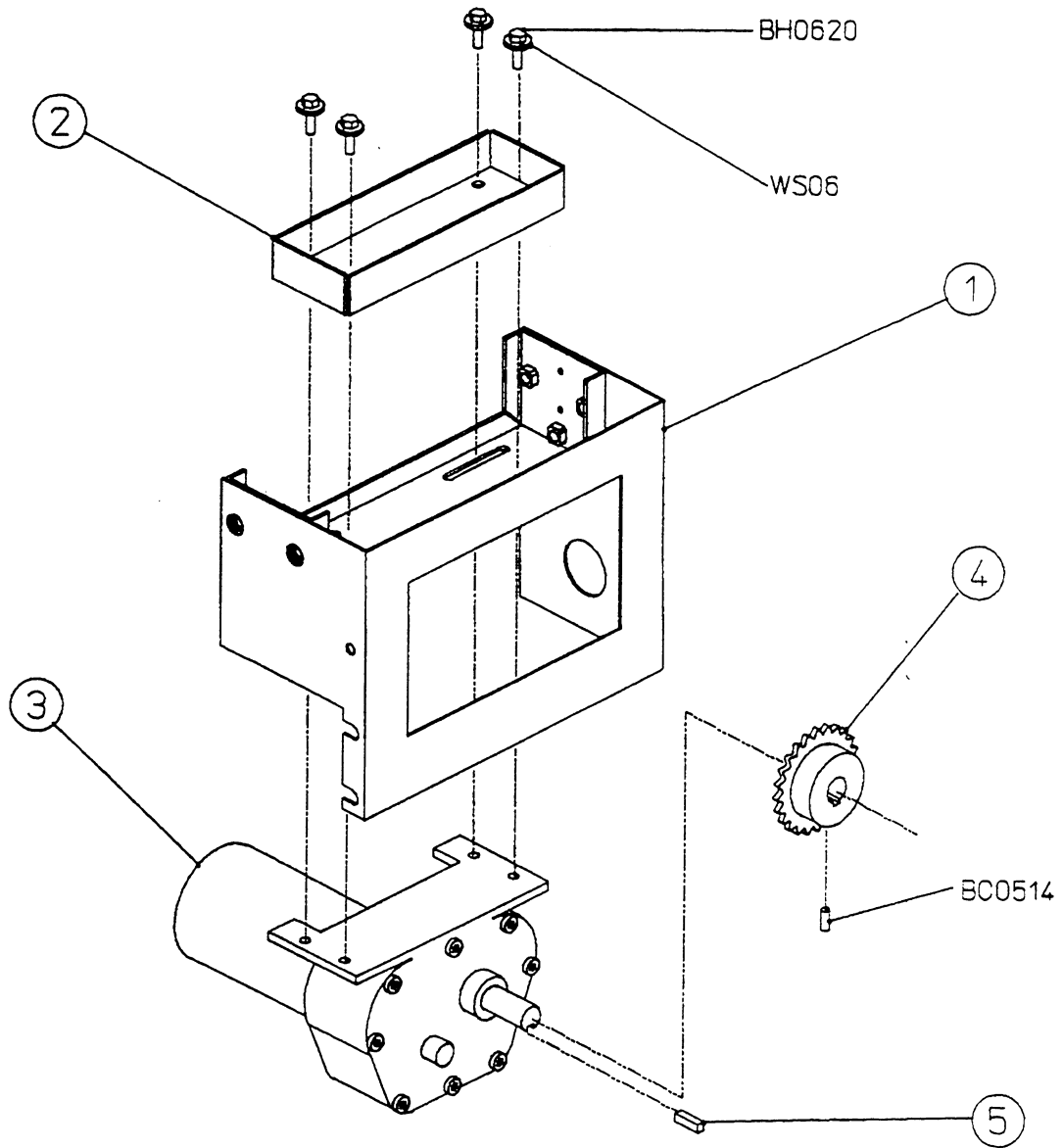




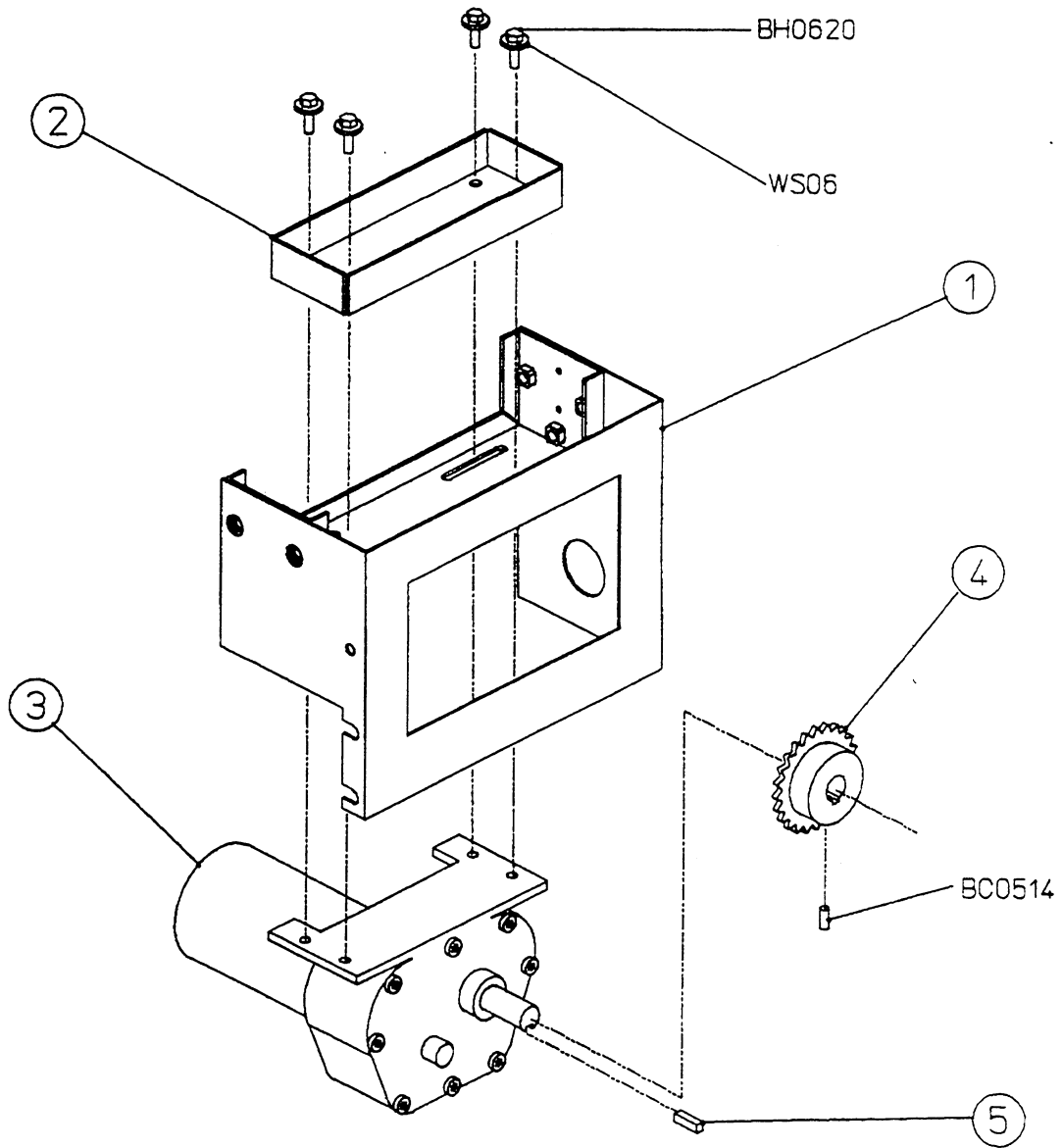


**MODEL: DM-180AX    TITLE: G. CONTROL BOX ASSEMBLY**

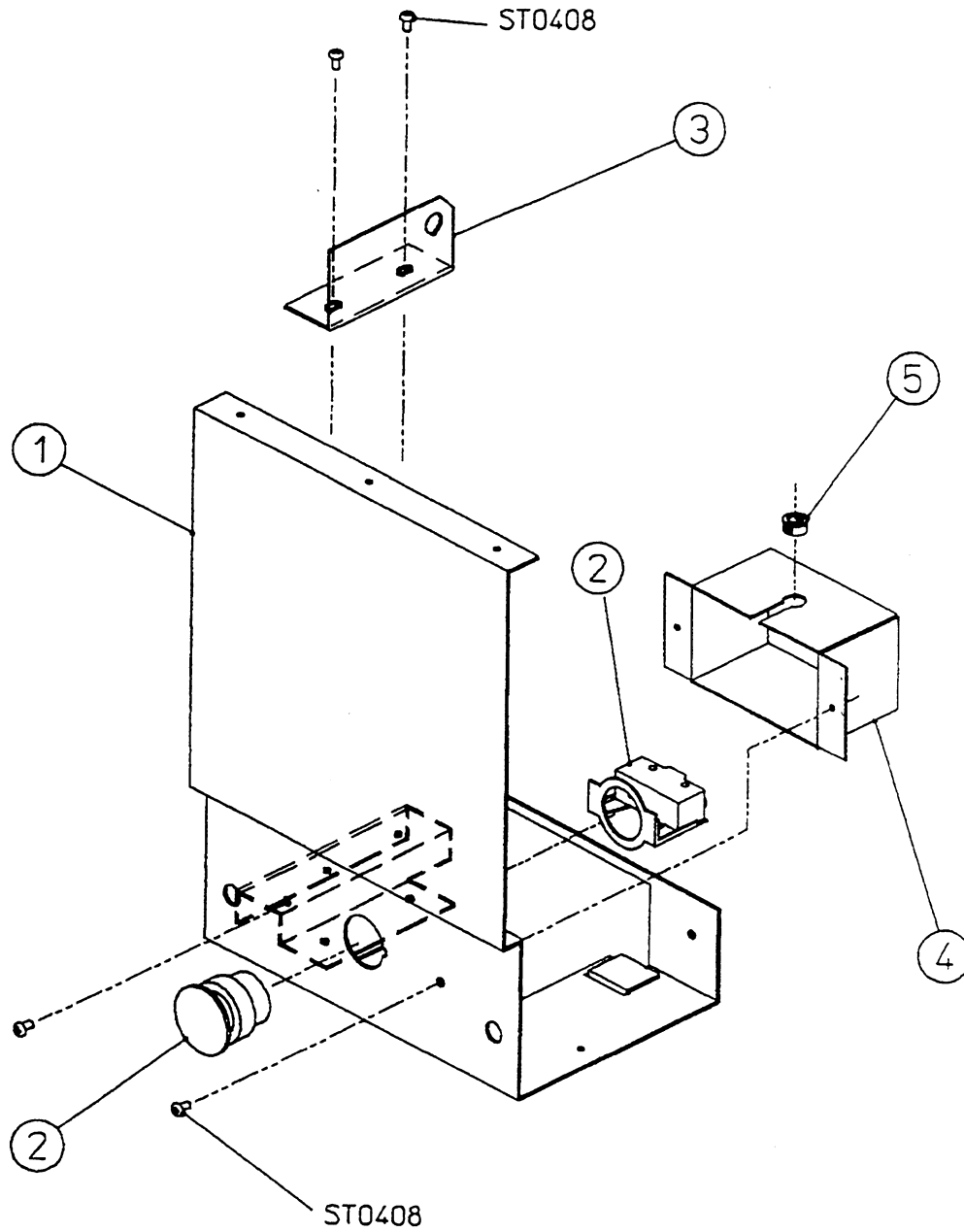
INDEX NO.	DESCRIPTION	MATERIAL OR MODEL NUMBER	PART NUMBER	REQUIRED NUMBER					
				E-2	G-1				
H	SOLENOID ASSEMBLY	-	212961A02	1	-				
		-	2A0585A01		1				
1	CONTROL BOX	GS	2A0545G01	1	-				
		GS	2A0734G01		1				
2	CIRCUIT PROTECTOR	W28-XQ1A-3	4A0505-01	1	x1				
	PROTECTOR	-	440972-02		o1				
3	CAPACITOR	25µf, 370V	439943-02	1	1				
4	STRAP	GS	4A0506-01	1	1				
5	BUSHING	SB-1093-13	420470-12	2	2				
6	TRANSFORMER	24V, 75VA	4A0507-01	1	1				
7	TIMER	TSX2413	4A0671-01	1	1				
8	CHEESEHEAD SCREW	SS 5 x 25	7C52-0525	1	x1				
	TRUSS HEAD SCREW	SS	7C32-0525		o1				
9	RELAY	LY2F, AC120V	406132-07	1	1				
10	TAPPING SCREW	3 x 8	431415-01	2	2				
11	LATCH	8501-00-57	4A0508-03	2	2				
12	BUSHING	SB-625-8	420470-01	1	1				
13	BALLAST	-	4A1074-01		1				
14	STARTER BASE	No. 380	4A1076-01		1				
15	STARTER	-	4A1075-01		1				

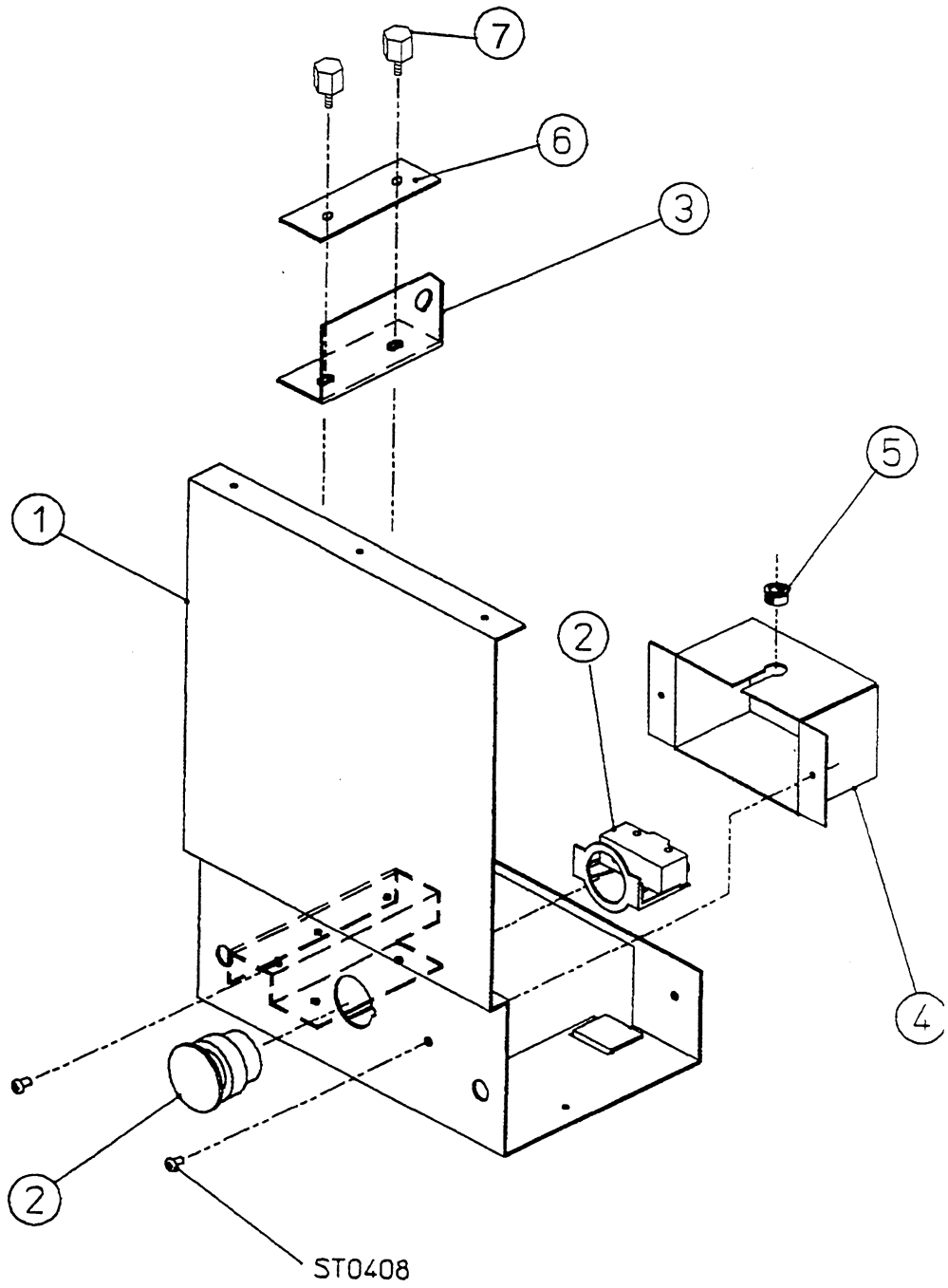


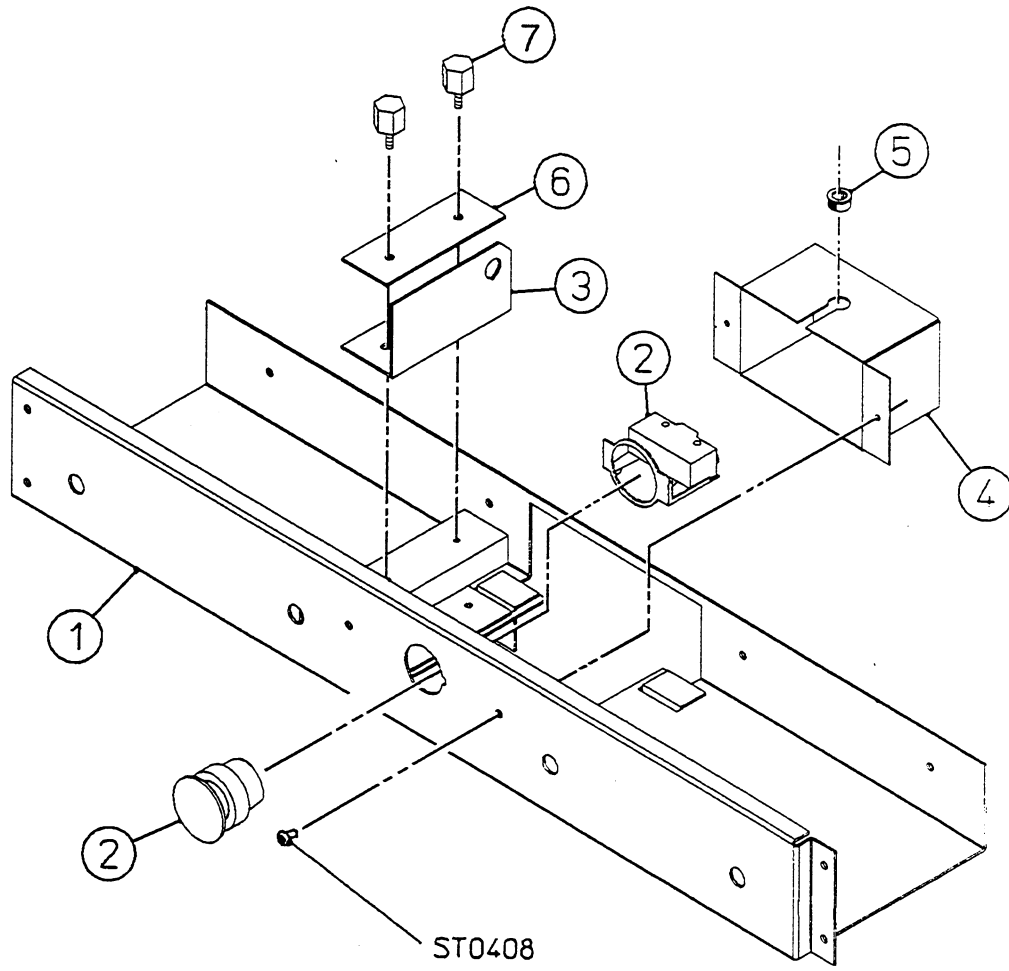




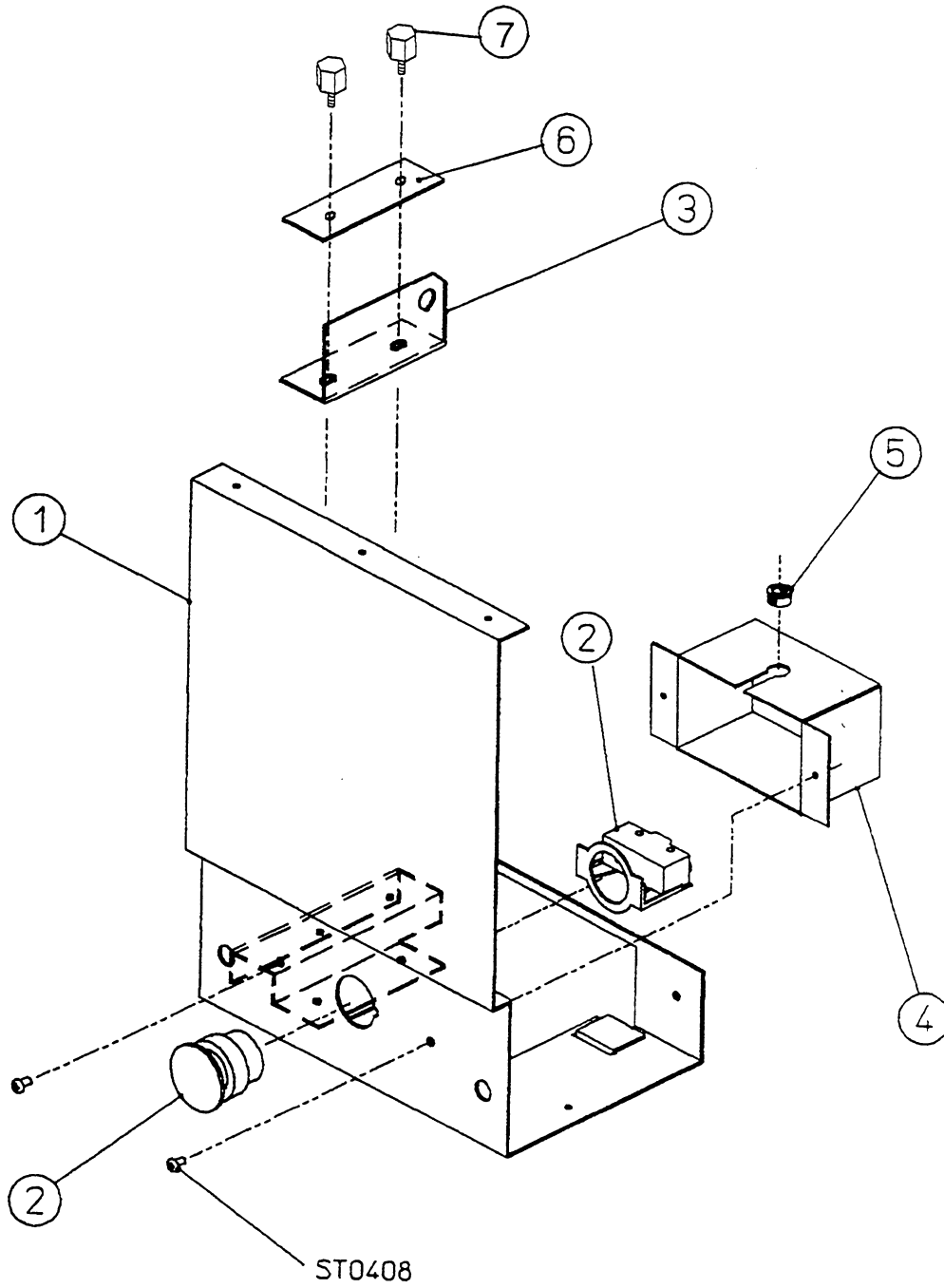


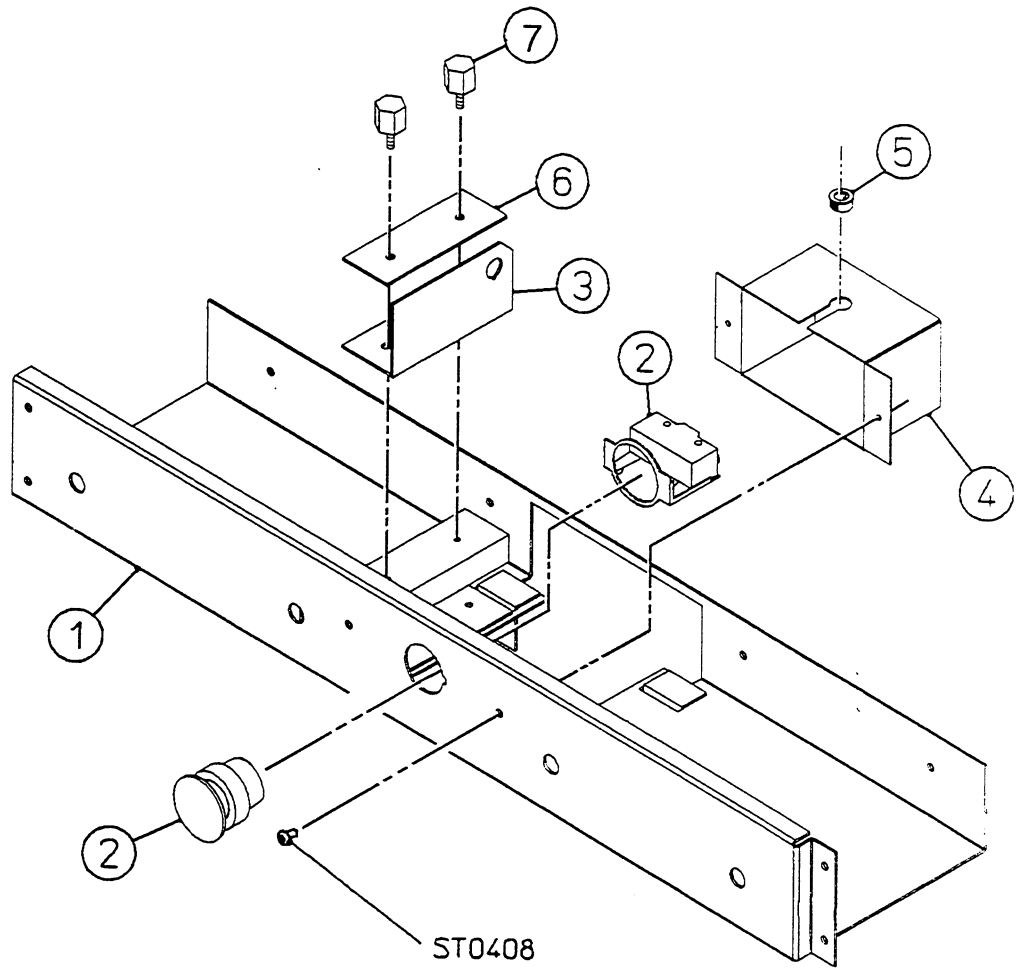




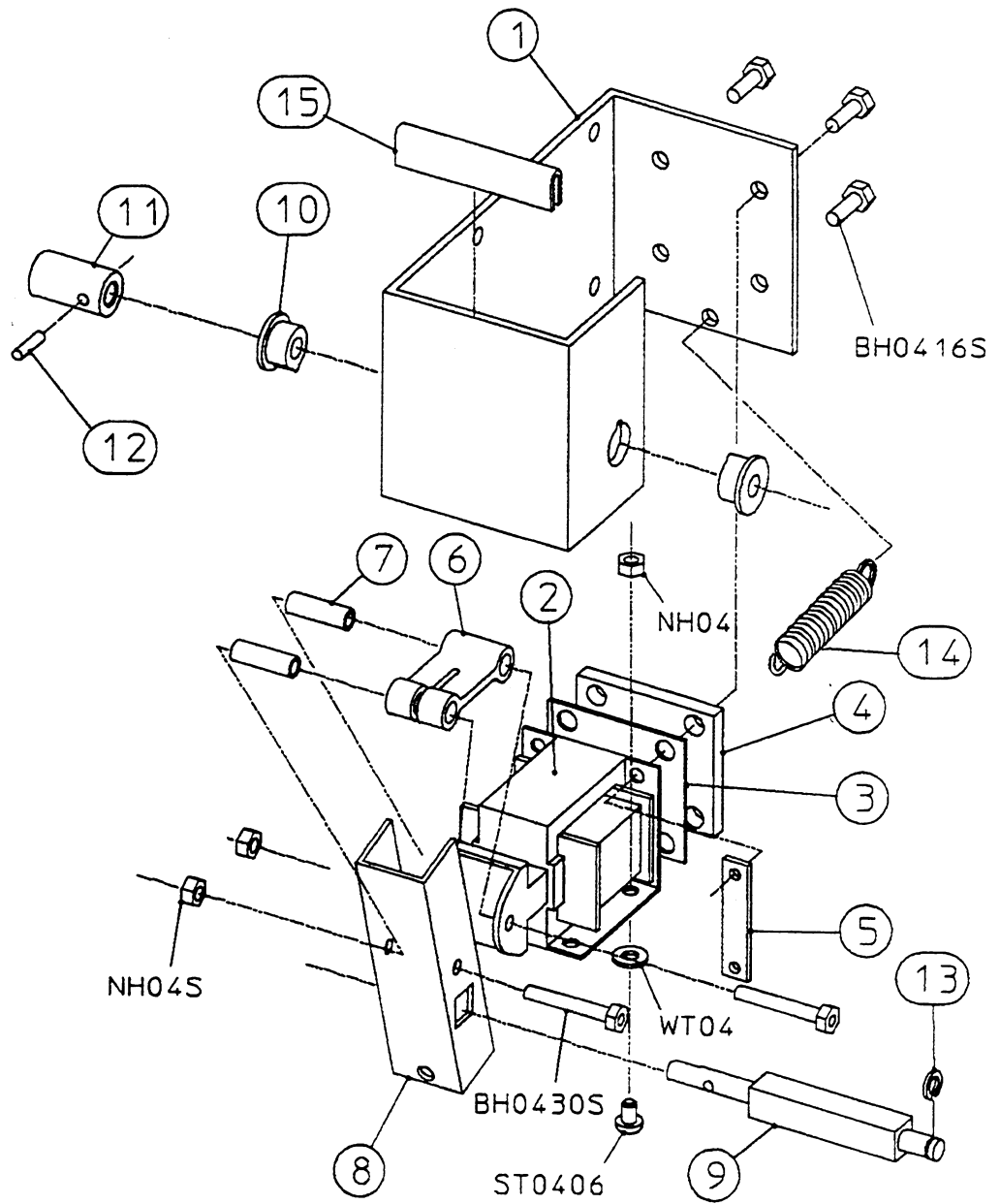


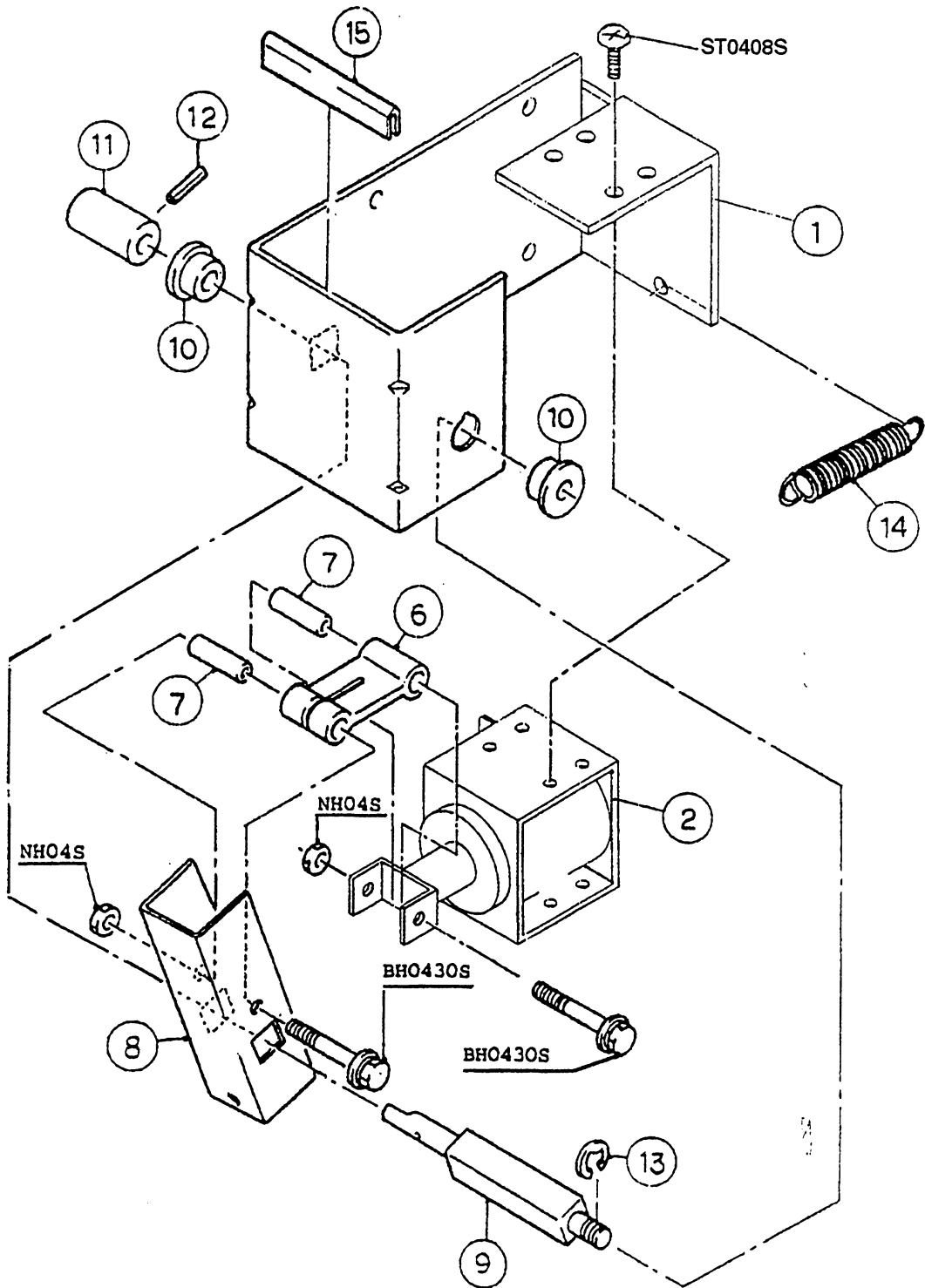




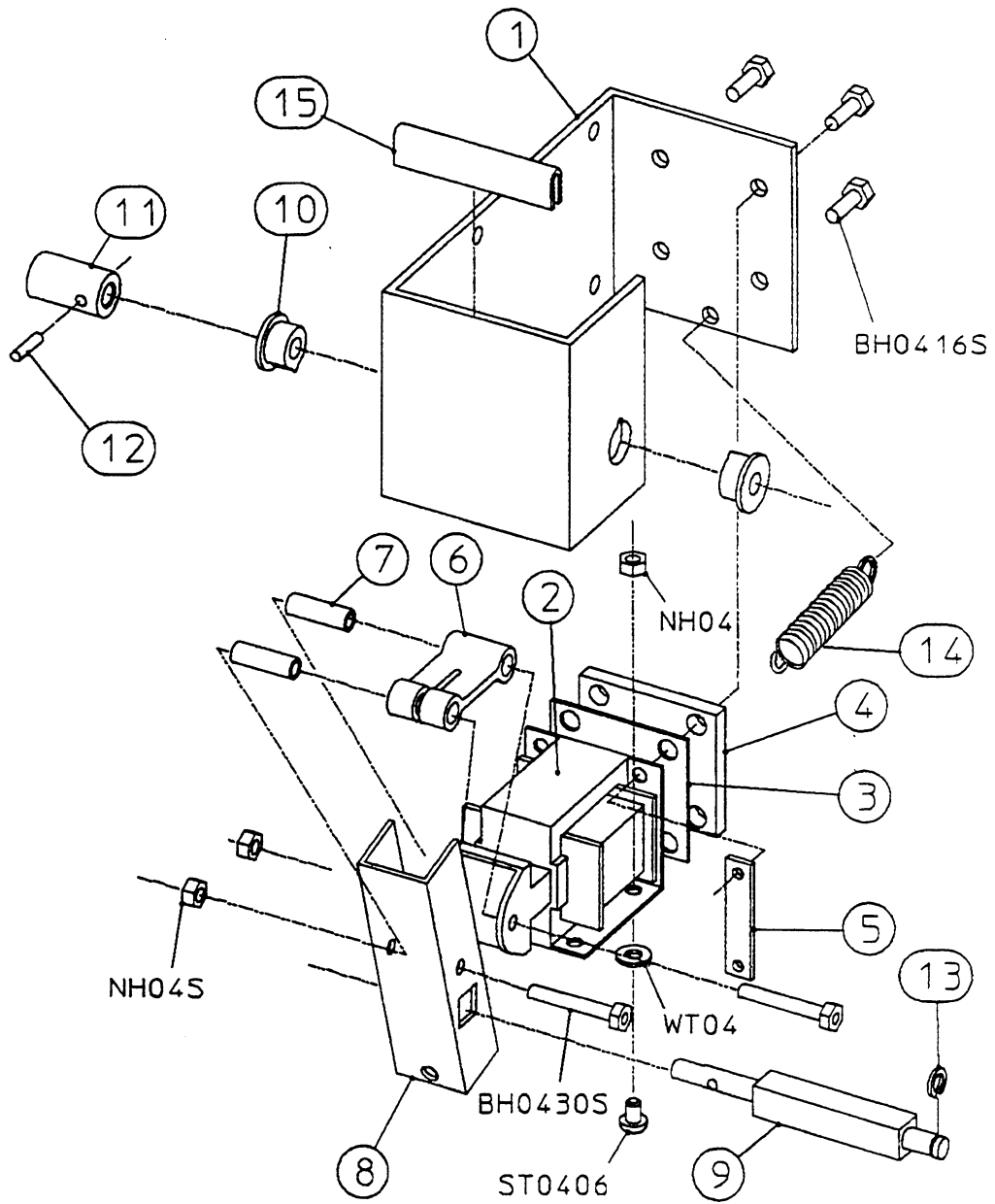


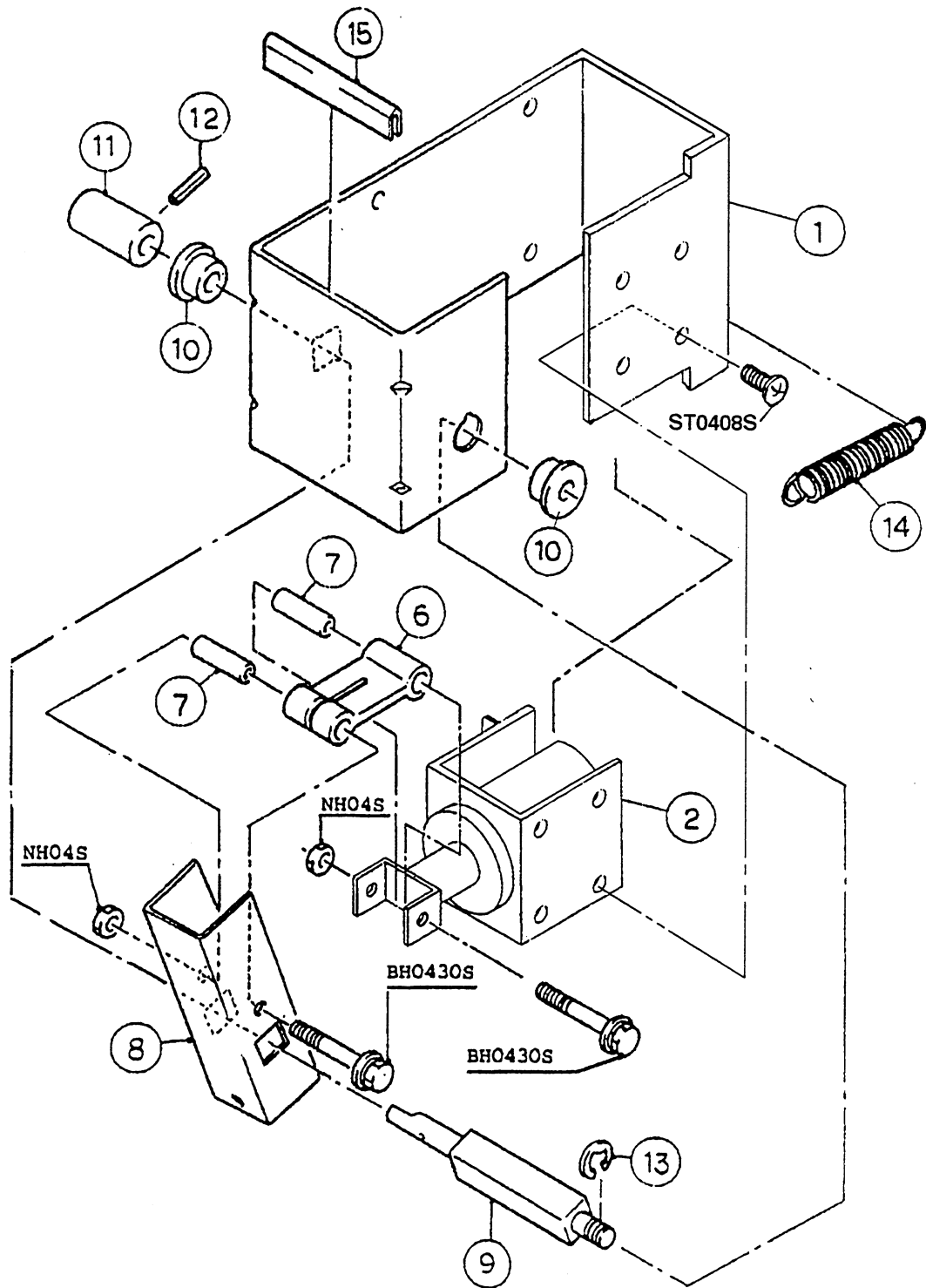




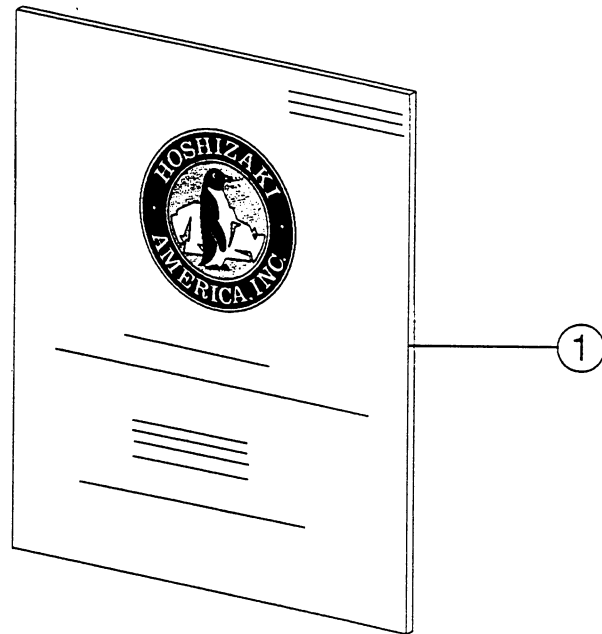


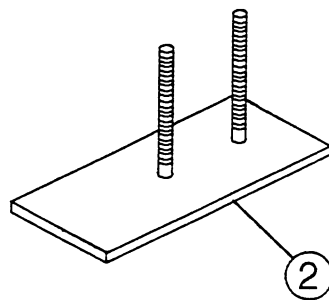
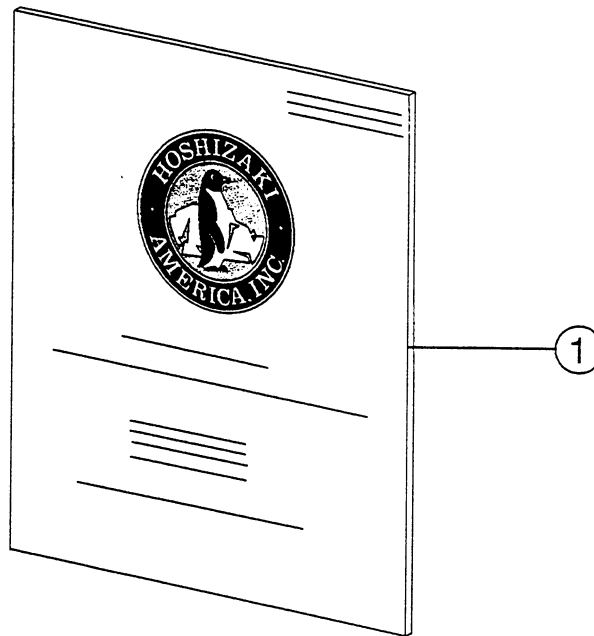




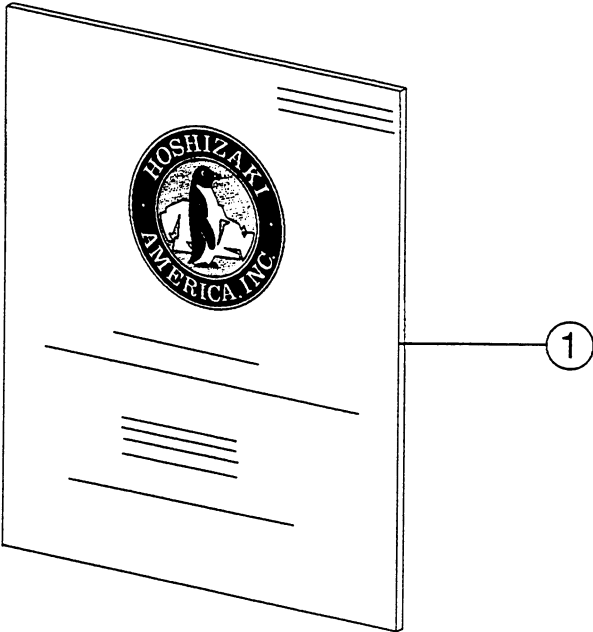


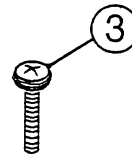
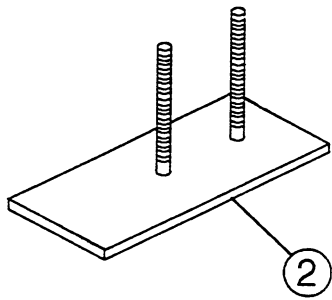
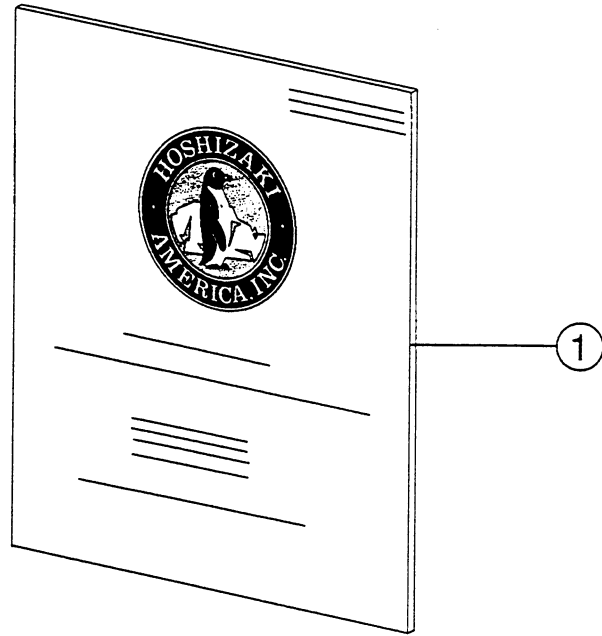














# **ICE/BEVERAGE DISPENSER**

**MODEL**  
**DM-180A**  
**DM-180AX**

## **PARTS LIST**

ISSUED: JULY 7, 1997  
REVISED: -----  
PRINTED: AUGUST 15, 1997  
ITEM NO: 71106