



# COMPACT BOOSTER Electric Water Heaters

## *C Series*

---

<i>C-4</i>	<i>C-13</i>	<i>C-30</i>
<i>C-5</i>	<i>C-15</i>	<i>C-36</i>
<i>C-6</i>	<i>C-17</i>	<i>C-39</i>
<i>C-7</i>	<i>C-18</i>	<i>C-45</i>
<i>C-9</i>	<i>C-24</i>	<i>C-54</i>
<i>C-12</i>	<i>C-27</i>	<i>C-58</i>

---

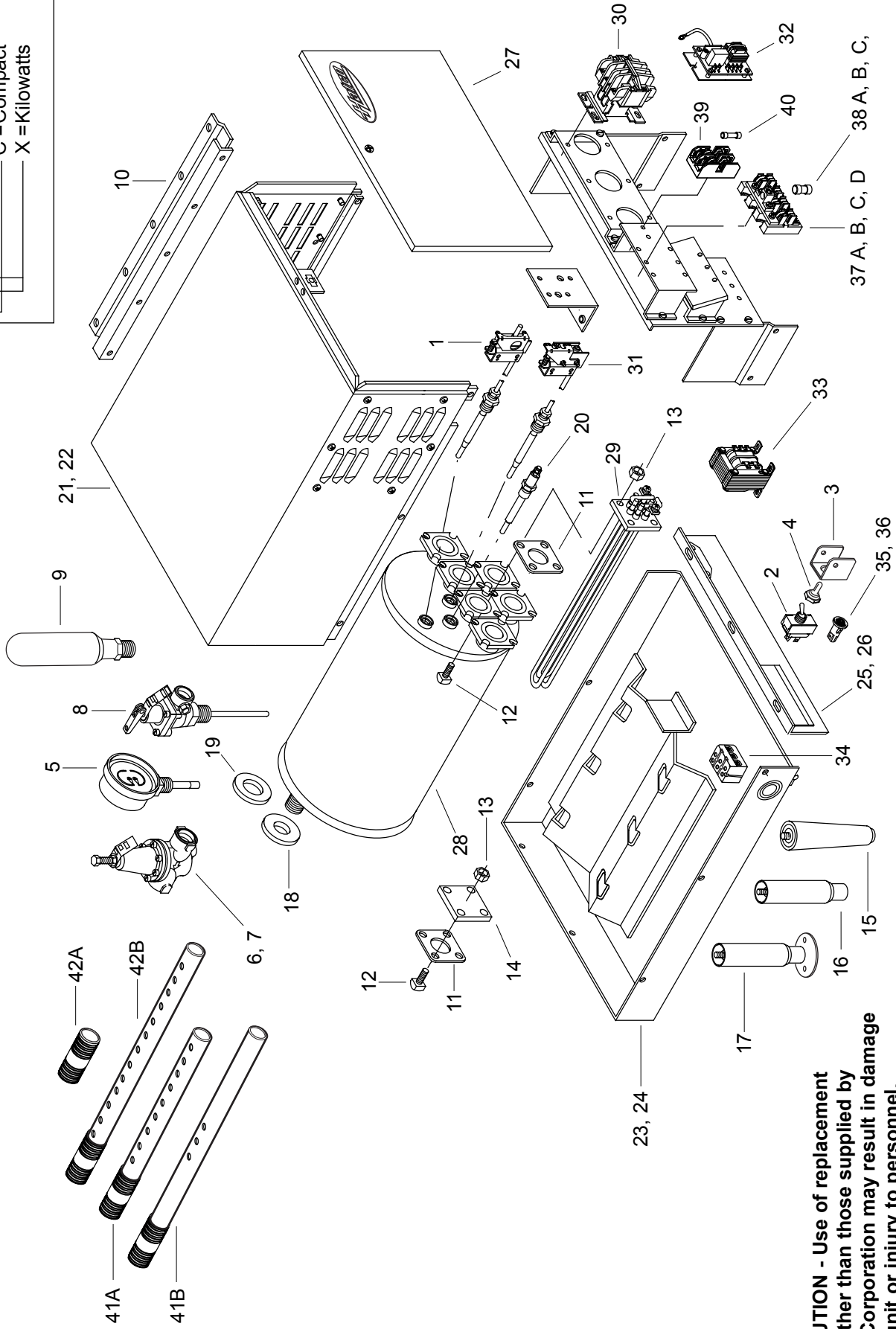
**REPLACEMENT  
PARTS LIST**

---

# HATCO COMPACT ELECTRIC BOOSTER HEATER C SERIES 4KW-58KW

## Model Designation

C-XX  
 C = Compact  
 X = Kilowatts



**⚠ CAUTION - Use of replacement parts other than those supplied by Hatco Corporation may result in damage to the unit or injury to personnel.**

**PARTS COMMON TO ALL  
COMPACT BOOSTER MODELS  
4KW-58KW**

ITEM	DESCRIPTION	PART NO.	QTY.
1	High Limit, Thermostat	02.16.116.00	1
2	On/Off Toggle Switch	R02.19.008A.00	1
3	Guard, Toggle Switch	04.01.038.00	1
4	Toggle Switch Boot, Rubber	02.20.040.00	1
5	Temperature/Pressure Gauge	03.01.003.00	2
6	Pressure Reducing Valve, Iron	03.02.004.00	1
7	Pressure Reducing Valve, Brass (Optional)	03.02.015.00	1
8	Temperature/Pressure Relief Valve	03.02.022.00	1
9	Shock Absorber (Optional)	03.40.057.00	1
10	Booster Slide Bracket Set	R04.20.030.00	1
11	Gasket, Heating Element	02.11.012.00	1-6
12	Bolt, Element Mounting	05.04.022.00	4-24
13	Nut, Element Mounting	05.04.028.00	4-24
14	Blank Element Flange with Gasket and Hardware	R02.11.013.00	1
15	Leg, Plastic	05.30.069.00*	4
16	Leg, S.S. (Optional)	05.30.070.00*	4
17	Deck Mount Legs, S.S. (Optional)	05.30.073.00*	4
18	Ring Seal, In/Out Pipe	05.06.006.00	2
19	Ring Seal, Relief Valve	05.06.017.00	1
20	Probe, Low Water Cut Off	02.40.001.00	1

\* 4-18KW units manufactured with serial number 1021059907 or lower use part number 05.30.008.00 for the plastic leg, 04.01.013.00 for the S.S. leg and 04.01.014.00 for the S.S. deck mount leg. 24-58KW units manufactured with serial number 1017179907 or lower use part number 05.30.008.00 for the plastic leg, 4.01.013.00 for the S.S. leg and 04.01.014.00 for the S.S. deck mount leg.

**NOTE:** S.S. is an abbreviation for stainless steel.

**COMPACT BOOSTER  
SHEET METAL BODY PARTS**

ITEM	DESCRIPTION	4KW-18KW	24KW-58KW
21	Jacket, Painted	R04.01.032.00	R04.01.220.00
22	Jacket, S.S. (Optional)	R04.01.034.00	R04.01.254.00
23	Base, Painted	R04.01.020P.00	R04.01.201P.00
24	Base, S.S. (Optional)	R04.01.022.00	R04.01.251.00
25	Base, Front, Painted	R04.01.033.00	R04.01.233.00
26	Base, Front, S.S. (Optional)	R04.01.035.00	R04.01.255.00
27	Front Cover, S.S. Front Cover, S.S.	R04.01.036.00	R04.01.221.00

**NOTE:** Part numbers listed for sheet metal body parts apply only to units manufactured during or after October 1996. Consult factory with model and serial number for units manufactured before October 1996.

**PARTS SPECIFIC TO MODEL C-4**

ITEM	DESCRIPTION	208V Single Phase	208V Three Phase	240V Single Phase	240V Three Phase	480V Single Phase	480V Three Phase	208V Single Phase	208V Three Phase	240V Single Phase
28	Tank with Gaskets	R01.02.002.00	R01.02.003.00	R01.02.002.00	R01.02.003.00	R01.02.002.00		R01.02.002.00		
29	Heating Element with Gasket Quantity	R02.04.400.00 1	R02.04.400.00 3	R02.04.401.00 1	R02.04.401.00 3	R02.04.404.00 1		R02.04.400.00 1		R02.04.401.00 1
30	Contactors Quantity	02.01.010.00 1	02.01.015.00 1	02.01.010.00 1	02.01.015.00 1	02.01.015.00 1		02.01.008.00 1		02.01.008.00 1
31	Thermostat Control	02.16.024.00	02.16.024.00	02.16.024.00	02.16.024.00	02.16.024.00		02.16.024.00		02.16.024.00
32	Low Water Cut Off Board	02.01.006.00	02.01.006.00	02.01.006.00	02.01.006.00	02.01.006.00		02.01.001.00		02.01.001.00
33	Transformer, Step Down	02.17.004.00	02.17.004.00	02.17.004.00	02.17.004.00	02.17.005.00				
34	Terminal Block	R02.15.045.00	R02.15.046.00	R02.15.045.00	R02.15.046.00			R02.15.045.00		R02.15.045.00
35	Indicator Light, Red	02.19.154.00	02.19.154.00	02.19.154.00	02.19.154.00	02.19.154.00		02.19.151.00		02.19.151.00
36	Indicator Light, Green							02.19.150.00		02.19.150.00
37A	Power Fuse Block Quantity									
37B	Power Fuse Block Quantity									
37C	Power Fuse Block Quantity									
37D	Power Fuse Block Quantity									
38A	Power Fuse (2 Pack) Quantity									
38B	Power Fuse (2 Pack) Quantity									
38C	Power Fuse (2 Pack) Quantity									
39	Control Fuse Block	02.03.022.00	02.03.022.00	02.03.022.00	02.03.022.00	02.03.023.00		02.03.004.00		02.03.004.00
40	Control Fuse (2 Pack)	R02.03.014.02	R02.03.014.02	R02.03.014.02	R02.03.014.02	R02.03.013.02		R02.03.001.02		R02.03.001.02
41A	Tube, Inlet Water	03.30.004.00	03.30.004.00	03.30.004.00	03.30.004.00	03.30.004.00		03.30.004.00		03.30.004.00
41B	Tube, Inlet Water									
42A	Nipple, Outlet Water	03.11.008.00	03.11.008.00	03.11.008.00	03.11.008.00	03.11.008.00		03.11.008.00		03.11.008.00
42B	Tube, Outlet Water									
	Electrical Diagram	HC1-2451	HS1-1541	HC1-2451	HS1-1541	HC1-2451		HC1-392		HC1-392

Shaded area reflects export models only.

**PARTS SPECIFIC TO MODEL C-4**

ITEM	DESCRIPTION	240V Three Phase	380V Three Phase	415V Three Phase	480V Three Phase	600V Three Phase	380-400V CE 3 Wire	400-415V CE 3 Wire	380-400V CE 4 Wire	400-415V CE 4 Wire
28	Tank with Gaskets	---	---	---	---	---	---	---	---	---
29	Heating Element with Gasket Quantity	---	---	---	---	---	---	---	---	---
30	Contactors Quantity	---	---	---	---	---	---	---	---	---
31	Thermostat Control	---	---	---	---	---	---	---	---	---
32	Low Water Cut Off Board	---	---	---	---	---	---	---	---	---
33	Transformer, Step Down	---	---	---	---	---	---	---	---	---
34	Terminal Block	---	---	---	---	---	---	---	---	---
35	Indicator Light, Red	---	---	---	---	---	---	---	---	---
36	Indicator Light, Green	---	---	---	---	---	---	---	---	---
37A	Power Fuse Block Quantity	---	---	---	---	---	---	---	---	---
37B	Power Fuse Block Quantity	---	---	---	---	---	---	---	---	---
37C	Power Fuse Block Quantity	---	---	---	---	---	---	---	---	---
37D	Power Fuse Block Quantity	---	---	---	---	---	---	---	---	---
38A	Power Fuse (2 Pack) Quantity	---	---	---	---	---	---	---	---	---
38B	Power Fuse (2 Pack) Quantity	---	---	---	---	---	---	---	---	---
38C	Power Fuse (2 Pack) Quantity	---	---	---	---	---	---	---	---	---
39	Control Fuse Block	---	---	---	---	---	---	---	---	---
40	Control Fuse (2 Pack)	---	---	---	---	---	---	---	---	---
41A	Tube, Inlet Water	---	---	---	---	---	---	---	---	---
41B	Tube, Inlet Water	---	---	---	---	---	---	---	---	---
42A	Nipple, Outlet Water	---	---	---	---	---	---	---	---	---
42B	Tube, Outlet Water	---	---	---	---	---	---	---	---	---
	Electrical Diagram	---	---	---	---	---	---	---	---	---

Shaded area reflects export models only.

**PARTS SPECIFIC TO MODEL C-5**

ITEM	DESCRIPTION	208V		240V		480V		208V		240V		480V	
		Single Phase	Three Phase	Single Phase	Three Phase	Single Phase	Three Phase	Single Phase	Three Phase	Single Phase	Three Phase	Single Phase	Three Phase
28	Tank with Gaskets	R01.02.002.00	R01.02.003.00	R01.02.002.00	R01.02.003.00	R01.02.002.00		R01.02.002.00					
29	Heating Element with Gasket Quantity	R02.04.500.00 1	R02.04.500.00 3	R02.04.501.00 1	R02.04.501.00 3	R02.04.502.00 1		R02.04.500.00 1					
30	Contactor Quantity	02.01.010.00 1	02.01.015.00 1	02.01.010.00 1	02.01.015.00 1	02.01.015.00 1		02.01.008.00 1					
31	Thermostat Control	02.16.024.00	02.16.024.00	02.16.024.00	02.16.024.00	02.16.024.00		02.16.024.00					
32	Low Water Cut Off Board	02.01.006.00	02.01.006.00	02.01.006.00	02.01.006.00	02.01.006.00		02.01.001.00					
33	Transformer, Step Down	02.17.004.00	02.17.004.00	02.17.004.00	02.17.004.00	02.17.005.00							
34	Terminal Block	R02.15.045.00	R02.15.046.00	R02.15.045.00	R02.15.046.00			R02.15.045.00					
35	Indicator Light, Red	02.19.154.00	02.19.154.00	02.19.154.00	02.19.154.00	02.19.154.00		02.19.151.00					
36	Indicator Light, Green							02.19.150.00					
37A	Power Fuse Block Quantity												
37B	Power Fuse Block Quantity												
37C	Power Fuse Block Quantity												
37D	Power Fuse Block Quantity												
38A	Power Fuse (2 Pack) Quantity												
38B	Power Fuse (2 Pack) Quantity												
38C	Power Fuse (2 Pack) Quantity												
39	Control Fuse Block	02.03.022.00	02.03.022.00	02.03.022.00	02.03.022.00	02.03.023.00		02.03.004.00					
40	Control Fuse (2 Pack)	R02.03.014.02	R02.03.014.02	R02.03.014.02	R02.03.014.02	R02.03.013.02		R02.03.001.02					
41A	Tube, Inlet Water	03.30.004.00	03.30.004.00	03.30.004.00	03.30.004.00	03.30.004.00		03.30.004.00					
41B	Tube, Inlet Water												
42A	Nipple, Outlet Water	03.11.008.00	03.11.008.00	03.11.008.00	03.11.008.00	03.11.008.00		03.11.008.00					
42B	Tube, Outlet Water												
	Electrical Diagram	HC1-2451	HS1-1541	HC1-2451	HS1-1541	HC1-2451		HC1-392					

Shaded area reflects **export models only**.

**PARTS SPECIFIC TO MODEL C-5**

ITEM	DESCRIPTION	240V Three Phase	380V Three Phase	415V Three Phase	480V Three Phase	600V Three Phase	380-400V CE 3 Wire	400-415V CE 3 Wire	380-400V CE 4 Wire	400-415V CE 4 Wire
28	Tank with Gaskets	---	---	---	---	---	---	---	---	---
29	Heating Element with Gasket Quantity	---	---	---	---	---	---	---	---	---
30	Contactors Quantity	---	---	---	---	---	---	---	---	---
31	Thermostat Control	---	---	---	---	---	---	---	---	---
32	Low Water Cut Off Board	---	---	---	---	---	---	---	---	---
33	Transformer, Step Down	---	---	---	---	---	---	---	---	---
34	Terminal Block	---	---	---	---	---	---	---	---	---
35	Indicator Light, Red	---	---	---	---	---	---	---	---	---
36	Indicator Light, Green	---	---	---	---	---	---	---	---	---
37A	Power Fuse Block Quantity	---	---	---	---	---	---	---	---	---
37B	Power Fuse Block Quantity	---	---	---	---	---	---	---	---	---
37C	Power Fuse Block Quantity	---	---	---	---	---	---	---	---	---
37D	Power Fuse Block Quantity	---	---	---	---	---	---	---	---	---
38A	Power Fuse (2 Pack) Quantity	---	---	---	---	---	---	---	---	---
38B	Power Fuse (2 Pack) Quantity	---	---	---	---	---	---	---	---	---
38C	Power Fuse (2 Pack) Quantity	---	---	---	---	---	---	---	---	---
39	Control Fuse Block	---	---	---	---	---	---	---	---	---
40	Control Fuse (2 Pack)	---	---	---	---	---	---	---	---	---
41A	Tube, Inlet Water	---	---	---	---	---	---	---	---	---
41B	Tube, Inlet Water	---	---	---	---	---	---	---	---	---
42A	Nipple, Outlet Water	---	---	---	---	---	---	---	---	---
42B	Tube, Outlet Water	---	---	---	---	---	---	---	---	---
	Electrical Diagram	---	---	---	---	---	---	---	---	---

Shaded area reflects export models only.

**PARTS SPECIFIC TO MODEL C-6**

ITEM	DESCRIPTION	208V		240V		480V		208V		240V		480V		208V		240V	
		Single Phase	Three Phase	Single Phase	Three Phase	Single Phase	Three Phase	Single Phase	Three Phase	Single Phase	Three Phase	Single Phase	Three Phase	Single Phase	Three Phase	Single Phase	Three Phase
28	Tank with Gaskets	R01.02.002.00	R01.02.002.00	R01.02.002.00	R01.02.002.00	---	---	---	---	---	---	---	---	---	R01.02.002.00	R01.02.002.00	R01.02.002.00
29	Heating Element with Gasket Quantity	R02.04.302.00	R02.04.302.00	R02.04.303.00	R02.04.303.00	---	---	---	---	---	---	---	---	---	R02.04.302.00	R02.04.302.00	R02.04.303.00
30	Contactors Quantity	2	2	2	2	---	---	---	---	---	---	---	---	---	2	2	2
31	Thermostat Control	02.01.015.00	02.01.015.00	02.01.015.00	02.01.015.00	---	---	---	---	---	---	---	---	---	02.01.015.00	02.01.016.00	02.01.016.00
32	Low Water Cut Off Board	1	1	1	1	---	---	---	---	---	---	---	---	---	1	1	1
33	Transformer, Step Down	02.16.024.00	02.16.024.00	02.16.024.00	02.16.024.00	---	---	---	---	---	---	---	---	---	02.16.024.00	02.16.024.00	02.16.024.00
34	Terminal Block	02.01.006.00	02.01.006.00	02.01.006.00	02.01.006.00	---	---	---	---	---	---	---	---	---	02.01.006.00	02.01.001.00	02.01.001.00
35	Indicator Light, Red	02.17.004.00	02.17.004.00	02.17.004.00	02.17.004.00	---	---	---	---	---	---	---	---	---	02.17.005.00	---	---
36	Indicator Light, Green	R02.15.046.00	R02.15.046.00	R02.15.046.00	R02.15.046.00	---	---	---	---	---	---	---	---	---	---	---	---
37A	Power Fuse Block	02.19.154.00	02.19.154.00	02.19.154.00	02.19.154.00	---	---	---	---	---	---	---	---	---	02.19.154.00	02.19.151.00	02.19.151.00
37B	Power Fuse Block	---	---	---	---	---	---	---	---	---	---	---	---	---	---	02.19.150.00	02.19.150.00
37C	Power Fuse Block	---	---	---	---	---	---	---	---	---	---	---	---	---	---	---	---
37D	Power Fuse Block	---	---	---	---	---	---	---	---	---	---	---	---	---	---	---	---
38A	Power Fuse (2 Pack)	---	---	---	---	---	---	---	---	---	---	---	---	---	---	---	---
38B	Power Fuse (2 Pack)	---	---	---	---	---	---	---	---	---	---	---	---	---	---	---	---
38C	Power Fuse (2 Pack)	---	---	---	---	---	---	---	---	---	---	---	---	---	---	---	---
39	Control Fuse Block	02.03.022.00	02.03.022.00	02.03.022.00	02.03.022.00	---	---	---	---	---	---	---	---	---	02.03.023.00	02.03.004.00	02.03.004.00
40	Control Fuse (2 Pack)	R02.03.014.02	R02.03.014.02	R02.03.014.02	R02.03.014.02	---	---	---	---	---	---	---	---	---	R02.03.013.02	R02.03.001.02	R02.03.001.02
41A	Tube, Inlet Water	03.30.004.00	03.30.004.00	03.30.004.00	03.30.004.00	---	---	---	---	---	---	---	---	---	03.30.004.00	03.30.004.00	03.30.004.00
41B	Tube, Inlet Water	---	---	---	---	---	---	---	---	---	---	---	---	---	---	---	---
42A	Nipple, Outlet Water	03.11.008.00	03.11.008.00	03.11.008.00	03.11.008.00	---	---	---	---	---	---	---	---	---	03.11.008.00	03.11.008.00	03.11.008.00
42B	Tube, Outlet Water	---	---	---	---	---	---	---	---	---	---	---	---	---	---	---	---
	Electrical Diagram	HC1-2455	HC1-2455	HC1-2455	HC1-2455	---	---	---	---	---	---	---	---	---	HC1-391	HC1-391	HC1-391

Shaded area reflects export models only.



**PARTS SPECIFIC TO MODEL C-6**

ITEM	DESCRIPTION	240V Three Phase	380V Three Phase	415V Three Phase	480V Three Phase	600V Three Phase	380-400V CE 3 Wire	400-415V CE 3 Wire	380-400V CE 4 Wire	400-415V CE 4 Wire
28	Tank with Gaskets	R01.02.002.00	R01.02.003.00	R01.02.003.00	R01.02.002.00	R01.02.003.00	R01.02.003.00	R01.02.003.00	R01.02.003.00	R01.02.003.00
29	Heating Element with Gasket Quantity	R02.04.303.00 2	R02.04.510.00 3	R02.04.452.00 3	R02.04.305.00 2	R02.04.404.00 3	R02.04.202.00 3	R02.04.202.00 3	R02.04.202.00 3	R02.04.202.00 3
30	Contactor Quantity	02.01.016.00 1	02.01.016.00 1	02.01.016.00 1	02.01.016.00 1	02.01.016.00 1	02.01.016.00 2	02.01.016.00 2	02.01.016.00 2	02.01.016.00 2
31	Thermostat Control	02.16.024.00	02.16.024.00	02.16.024.00	02.16.024.00	02.16.024.00	02.16.024.00	02.16.024.00	02.16.024.00	02.16.024.00
32	Low Water Cut Off Board	02.01.001.00	02.01.001.00	02.01.001.00	02.01.001.00	02.01.001.00	02.01.164.00	02.01.164.00	02.01.164.00	02.01.164.00
33	Transformer, Step Down	---	R02.17.003.00	R02.17.002.00	R02.17.002.00	02.17.009.00	02.17.043.00	02.17.043.00	---	---
34	Terminal Block	R02.15.046.00	---	---	---	---	R02.15.035.00	R02.15.035.00	02.15.044.00	02.15.044.00
35	Indicator Light, Red	02.19.151.00	02.19.151.00	02.19.151.00	02.19.151.00	02.19.151.00	---	---	---	---
36	Indicator Light, Green	02.19.150.00	02.19.150.00	02.19.150.00	02.19.150.00	02.19.150.00	02.19.150.00	02.19.150.00	02.19.150.00	02.19.150.00
37A	Power Fuse Block Quantity	---	---	---	---	---	---	---	---	---
37B	Power Fuse Block Quantity	---	---	---	---	---	---	---	---	---
37C	Power Fuse Block Quantity	---	---	---	---	---	---	---	---	---
37D	Power Fuse Block Quantity	---	---	---	---	---	---	---	---	---
38A	Power Fuse (2 Pack) Quantity	---	---	---	---	---	---	---	---	---
38B	Power Fuse (2 Pack) Quantity	---	---	---	---	---	---	---	---	---
38C	Power Fuse (2 Pack) Quantity	---	---	---	---	---	---	---	---	---
39	Control Fuse Block	02.03.004.00	---	---	---	---	---	---	---	---
40	Control Fuse (2 Pack)	R02.03.001.02	R02.03.005.02	R02.03.005.02	R02.03.005.02	R02.03.021.02	---	---	---	---
41A	Tube, Inlet Water	03.30.004.00	03.30.004.00	03.30.004.00	03.30.004.00	03.30.004.00	03.30.004.00	03.30.004.00	03.30.004.00	03.30.004.00
41B	Tube, Inlet Water	---	---	---	---	---	---	---	---	---
42A	Nipple, Outlet Water	03.11.008.00	03.11.008.00	03.11.008.00	03.11.008.00	03.11.008.00	03.11.008.00	03.11.008.00	03.11.008.00	03.11.008.00
42B	Tube, Outlet Water	---	---	---	---	---	---	---	---	---
42B	Electrical Diagram	HC1-391	HC1-396	HC1-396	HC1-397	HC1-396	HS1-4931	HS1-4931	HS1-4718	HS1-4718

Shaded area reflects export models only.

## PARTS SPECIFIC TO MODEL C-7

ITEM	DESCRIPTION	208V		240V		480V		208V		240V		480V		208V		240V	
		Single Phase	Three Phase	Single Phase	Three Phase	Single Phase	Three Phase	Single Phase	Three Phase	Single Phase	Three Phase	Single Phase	Three Phase	Single Phase	Three Phase	Single Phase	Three Phase
28	Tank with Gaskets	R01.02.002.00	R01.02.002.00	R01.02.002.00	R01.02.002.00	---	---	---	---	---	---	---	---	---	R01.02.002.00	R01.02.002.00	R01.02.002.00
29	Heating Element with Gasket Quantity	R02.04.350.00 2	R02.04.350.00 2	R02.04.351.00 2	R02.04.351.00 2	---	---	---	---	---	---	---	---	---	R02.04.352.00 2	R02.04.350.00 2	R02.04.351.00 2
30	Contactors Quantity	02.01.015.00 1	02.01.015.00 1	02.01.015.00 1	02.01.015.00 1	---	---	---	---	---	---	---	---	---	02.01.015.00 1	02.01.016.00 1	02.01.016.00 1
31	Thermostat Control	02.16.024.00	02.16.024.00	02.16.024.00	02.16.024.00	---	---	---	---	---	---	---	---	---	02.16.024.00	02.16.024.00	02.16.024.00
32	Low Water Cut Off Board	02.01.006.00	02.01.006.00	02.01.006.00	02.01.006.00	---	---	---	---	---	---	---	---	---	02.01.006.00	02.01.001.00	02.01.001.00
33	Transformer, Step Down	02.17.004.00	02.17.004.00	02.17.004.00	02.17.004.00	---	---	---	---	---	---	---	---	---	02.17.005.00	---	---
34	Terminal Block	R02.15.046.00	R02.15.046.00	R02.15.046.00	R02.15.046.00	---	---	---	---	---	---	---	---	---	---	R02.15.046.00	R02.15.046.00
35	Indicator Light, Red	02.19.154.00	02.19.154.00	02.19.154.00	02.19.154.00	---	---	---	---	---	---	---	---	---	02.19.154.00	02.19.151.00	02.19.151.00
36	Indicator Light, Green	---	---	---	---	---	---	---	---	---	---	---	---	---	---	02.19.150.00	02.19.150.00
37A	Power Fuse Block Quantity	---	---	---	---	---	---	---	---	---	---	---	---	---	---	---	---
37B	Power Fuse Block Quantity	---	---	---	---	---	---	---	---	---	---	---	---	---	---	---	---
37C	Power Fuse Block Quantity	---	---	---	---	---	---	---	---	---	---	---	---	---	---	---	---
37D	Power Fuse Block Quantity	---	---	---	---	---	---	---	---	---	---	---	---	---	---	---	---
38A	Power Fuse (2 Pack) Quantity	---	---	---	---	---	---	---	---	---	---	---	---	---	---	---	---
38B	Power Fuse (2 Pack) Quantity	---	---	---	---	---	---	---	---	---	---	---	---	---	---	---	---
38C	Power Fuse (2 Pack) Quantity	---	---	---	---	---	---	---	---	---	---	---	---	---	---	---	---
39	Control Fuse Block	02.03.022.00	02.03.022.00	02.03.022.00	02.03.022.00	---	---	---	---	---	---	---	---	---	02.03.023.00	02.03.004.00	02.03.004.00
40	Control Fuse (2 Pack)	R02.03.014.02	R02.03.014.02	R02.03.014.02	R02.03.014.02	---	---	---	---	---	---	---	---	---	R02.03.013.02	R02.03.001.02	R02.03.001.02
41A	Tube, Inlet Water	03.30.004.00	03.30.004.00	03.30.004.00	03.30.004.00	---	---	---	---	---	---	---	---	---	03.30.004.00	03.30.004.00	03.30.004.00
41B	Tube, Inlet Water	---	---	---	---	---	---	---	---	---	---	---	---	---	---	---	---
42A	Nipple, Outlet Water	03.11.008.00	03.11.008.00	03.11.008.00	03.11.008.00	---	---	---	---	---	---	---	---	---	03.11.008.00	03.11.008.00	03.11.008.00
42B	Tube, Outlet Water	---	---	---	---	---	---	---	---	---	---	---	---	---	---	---	---
	Electrical Diagram	HC1-2455	HC1-2455	HC1-2455	HC1-2455	---	---	---	---	---	---	---	---	---	HC1-391	HC1-391	HC1-391

Shaded area reflects export models only.

**PARTS SPECIFIC TO MODEL C-7**

ITEM	DESCRIPTION	240V Three Phase	380V Three Phase	415V Three Phase	480V Three Phase	600V Three Phase	380-400V CE 3 Wire	400-415V CE 3 Wire	380-400V CE 4 Wire	400-415V CE 4 Wire
28	Tank with Gaskets	R01.02.002.00	R01.02.003.00	R01.02.003.00	R01.02.002.00	---	R01.02.003.00	R01.02.003.00	R01.02.003.00	R01.02.003.00
29	Heating Element with Gasket Quantity	R02.04.351.00 2	R02.04.303.00 3	R02.04.510.00 3	R02.04.352.00 2	---	R02.04.307.00 3	R02.04.307.00 3	R02.04.307.00 3	R02.04.307.00 3
30	Contactors Quantity	02.01.016.00 1	02.01.016.00 1	02.01.016.00 1	02.01.016.00 1	---	02.01.016.00 2	02.01.016.00 2	02.01.016.00 2	02.01.016.00 2
31	Thermostat Control	02.16.024.00	02.16.024.00	02.16.024.00	02.16.024.00	---	02.16.024.00	02.16.024.00	02.16.024.00	02.16.024.00
32	Low Water Cut Off Board	02.01.001.00	02.01.001.00	02.01.001.00	02.01.001.00	---	02.01.164.00	02.01.164.00	02.01.164.00	02.01.164.00
33	Transformer, Step Down	---	R02.17.003.00	R02.17.002.00	R02.17.002.00	---	02.17.043.00	02.17.043.00	---	---
34	Terminal Block	R02.15.046.00	---	---	---	---	R02.15.035.00	R02.15.035.00	02.15.044.00	02.15.044.00
35	Indicator Light, Red	02.19.151.00	02.19.151.00	02.19.151.00	02.19.151.00	---	---	---	---	---
36	Indicator Light, Green	02.19.150.00	02.19.150.00	02.19.150.00	02.19.150.00	---	02.19.150.00	02.19.150.00	02.19.150.00	02.19.150.00
37A	Power Fuse Block Quantity	---	---	---	---	---	---	---	---	---
37B	Power Fuse Block Quantity	---	---	---	---	---	---	---	---	---
37C	Power Fuse Block Quantity	---	---	---	---	---	---	---	---	---
37D	Power Fuse Block Quantity	---	---	---	---	---	---	---	---	---
38A	Power Fuse (2 Pack) Quantity	---	---	---	---	---	---	---	---	---
38B	Power Fuse (2 Pack) Quantity	---	---	---	---	---	---	---	---	---
38C	Power Fuse (2 Pack) Quantity	---	---	---	---	---	---	---	---	---
39	Control Fuse Block	02.03.004.00	---	---	---	---	---	---	---	---
40	Control Fuse (2 Pack)	R02.03.001.02	R02.03.005.02	R02.03.005.02	R02.03.005.02	---	---	---	---	---
41A	Tube, Inlet Water	03.30.004.00	03.30.004.00	03.30.004.00	03.30.004.00	---	03.30.004.00	03.30.004.00	03.30.004.00	03.30.004.00
41B	Tube, Inlet Water	---	---	---	---	---	---	---	---	---
42A	Nipple, Outlet Water	03.11.008.00	03.11.008.00	03.11.008.00	03.11.008.00	---	03.11.008.00	03.11.008.00	03.11.008.00	03.11.008.00
42B	Tube, Outlet Water	---	---	---	---	---	---	---	---	---
	Electrical Diagram	HC1-391	HC1-396	HC1-396	HC1-393	---	HS1-4931	HS1-4931	HS1-4718	HS1-4718

Shaded area reflects export models only.

**PARTS SPECIFIC TO MODEL C-9**

ITEM	DESCRIPTION	208V		240V		480V		208V		240V		480V		208V		240V	
		Single Phase	Three Phase	Single Phase	Three Phase	Single Phase	Three Phase	Single Phase	Three Phase	Single Phase	Three Phase	Single Phase	Three Phase	Single Phase	Three Phase	Single Phase	Three Phase
28	Tank with Gaskets	R01.02.002.00	R01.02.002.00	R01.02.002.00	R01.02.002.00	---	---	---	---	---	---	---	---	R01.02.002.00	R01.02.002.00	R01.02.002.00	R01.02.002.00
29	Heating Element with Gasket Quantity	R02.04.450.00 2	R02.04.450.00 2	R02.04.451.00 2	R02.04.451.00 2	---	---	---	---	---	---	---	---	R02.04.453.00 2	R02.04.450.00 2	R02.04.450.00 2	R02.04.451.00 2
30	Contactors Quantity	02.01.015.00 1	02.01.015.00 1	02.01.015.00 1	02.01.015.00 1	---	---	---	---	---	---	---	---	02.01.015.00 1	02.01.016.00 1	02.01.016.00 1	02.01.016.00 1
31	Thermostat Control	02.16.024.00	02.16.024.00	02.16.024.00	02.16.024.00	---	---	---	---	---	---	---	---	02.16.024.00	02.16.024.00	02.16.024.00	02.16.024.00
32	Low Water Cut Off Board	02.01.006.00	02.01.006.00	02.01.006.00	02.01.006.00	---	---	---	---	---	---	---	---	02.01.006.00	02.01.001.00	02.01.001.00	02.01.001.00
33	Transformer, Step Down	02.17.004.00	02.17.004.00	02.17.004.00	02.17.004.00	---	---	---	---	---	---	---	---	02.17.005.00	---	---	---
34	Terminal Block	R02.15.046.00	R02.15.046.00	R02.15.046.00	R02.15.046.00	---	---	---	---	---	---	---	---	---	R02.15.046.00	R02.15.046.00	R02.15.046.00
35	Indicator Light, Red	02.19.154.00	02.19.154.00	02.19.154.00	02.19.154.00	---	---	---	---	---	---	---	---	02.19.154.00	02.19.151.00	02.19.151.00	02.19.151.00
36	Indicator Light, Green	---	---	---	---	---	---	---	---	---	---	---	---	---	02.19.150.00	02.19.150.00	02.19.150.00
37A	Power Fuse Block Quantity	---	---	---	---	---	---	---	---	---	---	---	---	---	---	---	---
37B	Power Fuse Block Quantity	---	---	---	---	---	---	---	---	---	---	---	---	---	---	---	---
37C	Power Fuse Block Quantity	---	---	---	---	---	---	---	---	---	---	---	---	---	---	---	---
37D	Power Fuse Block Quantity	---	---	---	---	---	---	---	---	---	---	---	---	---	---	---	---
38A	Power Fuse (2 Pack) Quantity	---	---	---	---	---	---	---	---	---	---	---	---	---	---	---	---
38B	Power Fuse (2 Pack) Quantity	---	---	---	---	---	---	---	---	---	---	---	---	---	---	---	---
38C	Power Fuse (2 Pack) Quantity	---	---	---	---	---	---	---	---	---	---	---	---	---	---	---	---
39	Control Fuse Block	02.03.022.00	02.03.022.00	02.03.022.00	02.03.022.00	---	---	---	---	---	---	---	---	02.03.023.00	02.03.004.00	02.03.004.00	02.03.004.00
40	Control Fuse (2 Pack)	R02.03.014.02	R02.03.014.02	R02.03.014.02	R02.03.014.02	---	---	---	---	---	---	---	---	R02.03.013.02	R02.03.001.02	R02.03.001.02	R02.03.001.02
41A	Tube, Inlet Water	03.30.004.00	03.30.004.00	03.30.004.00	03.30.004.00	---	---	---	---	---	---	---	---	03.30.004.00	03.30.004.00	03.30.004.00	03.30.004.00
41B	Tube, Inlet Water	---	---	---	---	---	---	---	---	---	---	---	---	---	---	---	---
42A	Nipple, Outlet Water	03.11.008.00	03.11.008.00	03.11.008.00	03.11.008.00	---	---	---	---	---	---	---	---	03.11.008.00	03.11.008.00	03.11.008.00	03.11.008.00
42B	Tube, Outlet Water	---	---	---	---	---	---	---	---	---	---	---	---	---	---	---	---
	Electrical Diagram	HC1-2455	HC1-2455	HC1-2455	HC1-2455	---	---	---	---	---	---	---	---	HC1-2455	HC1-391	HC1-391	HC1-391

Shaded area reflects export models only.

**PARTS SPECIFIC TO MODEL C-9**

ITEM	DESCRIPTION	240V Three Phase	380V Three Phase	415V Three Phase	480V Three Phase	600V Three Phase	380-400V CE 3 Wire	400-415V CE 3 Wire	380-400V CE 4 Wire	400-415V CE 4 Wire
28	Tank with Gaskets	R01.02.002.00	R01.02.003.00	R01.02.003.00	R01.02.002.00	R01.02.003.00	R01.02.003.00	R01.02.003.00	R01.02.003.00	R01.02.003.00
29	Heating Element with Gasket Quantity	R02.04.451.00 2	R02.04.351.00 3	R02.04.303.00 3	R02.04.453.00 2	R02.04.304.00 3	R02.04.303.00 3	R02.04.303.00 3	R02.04.303.00 3	R02.04.303.00 3
30	Contactors Quantity	02.01.016.00 1	02.01.016.00 1	02.01.016.00 1	02.01.016.00 1	02.01.016.00 1	02.01.016.00 2	02.01.016.00 2	02.01.016.00 2	02.01.016.00 2
31	Thermostat Control	02.16.024.00	02.16.024.00	02.16.024.00	02.16.024.00	02.16.024.00	02.16.024.00	02.16.024.00	02.16.024.00	02.16.024.00
32	Low Water Cut Off Board	02.01.001.00	02.01.001.00	02.01.001.00	02.01.001.00	02.01.001.00	02.01.164.00	02.01.164.00	02.01.164.00	02.01.164.00
33	Transformer, Step Down	---	02.17.003.00	02.17.002.00	02.17.002.00	02.17.009.00	02.17.043.00	02.17.043.00	---	---
34	Terminal Block	R02.15.046.00	---	---	---	---	R02.15.035.00	R02.15.035.00	02.15.044.00	02.15.044.00
35	Indicator Light, Red	02.19.151.00	02.19.151.00	02.19.151.00	02.19.151.00	02.19.151.00	---	---	---	---
36	Indicator Light, Green	02.19.150.00	02.19.150.00	02.19.150.00	02.19.150.00	02.19.150.00	02.19.150.00	02.19.150.00	02.19.150.00	02.19.150.00
37A	Power Fuse Block Quantity	---	---	---	---	---	---	---	---	---
37B	Power Fuse Block Quantity	---	---	---	---	---	---	---	---	---
37C	Power Fuse Block Quantity	---	---	---	---	---	---	---	---	---
37D	Power Fuse Block Quantity	---	---	---	---	---	---	---	---	---
38A	Power Fuse (2 Pack) Quantity	---	---	---	---	---	---	---	---	---
38B	Power Fuse (2 Pack) Quantity	---	---	---	---	---	---	---	---	---
38C	Power Fuse (2 Pack) Quantity	---	---	---	---	---	---	---	---	---
39	Control Fuse Block	02.03.004.00	---	---	---	---	---	---	---	---
40	Control Fuse (2 Pack)	R02.03.001.02	R02.03.005.02	R02.03.005.02	R02.03.005.02	R02.03.021.02	---	---	---	---
41A	Tube, Inlet Water	03.30.004.00	03.30.004.00	03.30.004.00	03.30.004.00	03.30.004.00	03.30.004.00	03.30.004.00	03.30.004.00	03.30.004.00
41B	Tube, Inlet Water	---	---	---	---	---	---	---	---	---
42A	Nipple, Outlet Water	03.11.008.00	03.11.008.00	03.11.008.00	03.11.008.00	03.11.008.00	03.11.008.00	03.11.008.00	03.11.008.00	03.11.008.00
42B	Tube, Outlet Water	---	---	---	---	---	---	---	---	---
	Electrical Diagram	HC1-391	HC1-396	HC1-396	HC1-393	HC1-396	HS1-4931	HS1-4931	HS1-4718	HS1-4718

Shaded area reflects export models only.

**PARTS SPECIFIC TO MODEL C-12**

ITEM	DESCRIPTION	208V		240V		480V		208V		240V		480V	
		Single Phase	Three Phase	Single Phase	Three Phase	Single Phase	Three Phase	Single Phase	Three Phase	Single Phase	Three Phase	Single Phase	Three Phase
28	Tank with Gaskets	R01.02.003.00	R01.02.003.00	R01.02.003.00	R01.02.003.00	---	---	R01.02.003.00	R01.02.003.00	R01.02.003.00	R01.02.003.00	R01.02.003.00	R01.02.003.00
29	Heating Element with Gasket Quantity	R02.04.400.00 3	R02.04.400.00 3	R02.04.401.00 3	R02.04.401.00 3	---	---	R02.04.404.00 3	R02.04.400.00 3	R02.04.400.00 3	R02.04.400.00 3	R02.04.400.00 3	R02.04.401.00 3
30	Contactor Quantity	02.01.017.00 1	02.01.015.00 1	02.01.017.00 1	02.01.015.00 1	---	---	02.01.015.00 1	02.01.018.00 1	02.01.018.00 1	02.01.018.00 1	02.01.018.00 1	02.01.018.00 1
31	Thermostat Control	02.16.024.00	02.16.024.00	02.16.024.00	02.16.024.00	---	---	02.16.024.00	02.16.024.00	02.16.024.00	02.16.024.00	02.16.024.00	02.16.024.00
32	Low Water Cut Off Board	02.01.006.00	02.01.006.00	02.01.006.00	02.01.006.00	---	---	02.01.006.00	02.01.006.00	02.01.006.00	02.01.006.00	02.01.006.00	02.01.001.00
33	Transformer, Step Down	02.17.004.00	02.17.004.00	02.17.004.00	02.17.004.00	---	---	02.17.004.00	02.17.004.00	02.17.004.00	02.17.004.00	02.17.005.00	---
34	Terminal Block	---	R02.15.046.00	---	R02.15.046.00	---	---	---	---	---	---	---	---
35	Indicator Light, Red	02.19.154.00	02.19.154.00	02.19.154.00	02.19.154.00	---	---	02.19.154.00	02.19.154.00	02.19.154.00	02.19.151.00	02.19.151.00	02.19.151.00
36	Indicator Light, Green	---	---	---	---	---	---	---	---	---	---	---	---
37A	Power Fuse Block Quantity	02.41.005.00 1	---	02.41.005.00 1	---	---	---	02.41.005.00 1	---	---	---	---	---
37B	Power Fuse Block Quantity	---	---	---	---	---	---	---	---	---	---	---	---
37C	Power Fuse Block Quantity	---	---	---	---	---	---	---	---	---	---	---	---
37D	Power Fuse Block Quantity	---	---	---	---	---	---	---	---	---	---	---	---
38A	Power Fuse (2 Pack) (35 Amp) Quantity	R02.03.030.02 1	---	R02.03.030.02 1	---	---	---	R02.03.030.02 1	---	---	---	---	---
38B	Power Fuse (2 Pack) (50 Amp) Quantity	R02.03.032.02 1	---	R02.03.032.02 1	---	---	---	R02.03.032.02 1	---	---	---	---	---
38C	Power Fuse (2 Pack) Quantity	---	---	---	---	---	---	---	---	---	---	---	---
39	Control Fuse Block	02.03.022.00	02.03.022.00	02.03.022.00	02.03.022.00	---	---	02.03.022.00	02.03.022.00	02.03.022.00	02.03.022.00	02.03.022.00	02.03.004.00
40	Control Fuse (2 Pack)	R02.03.014.02	R02.03.014.02	R02.03.014.02	R02.03.014.02	---	---	R02.03.014.02	R02.03.014.02	R02.03.014.02	R02.03.013.02	R02.03.001.02	R02.03.001.02
41A	Tube, Inlet Water	03.30.004.00	03.30.004.00	03.30.004.00	03.30.004.00	---	---	03.30.004.00	03.30.004.00	03.30.004.00	03.30.004.00	03.30.004.00	03.30.004.00
41B	Tube, Inlet Water	---	---	---	---	---	---	---	---	---	---	---	---
42A	Nipple, Outlet Water	03.11.008.00	03.11.008.00	03.11.008.00	03.11.008.00	---	---	03.11.008.00	03.11.008.00	03.11.008.00	03.11.008.00	03.11.008.00	03.11.008.00
42B	Tube, Outlet Water	---	---	---	---	---	---	---	---	---	---	---	---
42B	Electrical Diagram	HS1-2073	HC1-2465	HS1-2073	HC1-2465	---	---	HS1-2073	HC1-2465	HC1-2465	HC1-2465	HC1-390	HC1-390

Shaded area reflects export models only.

**PARTS SPECIFIC TO MODEL C-12**

ITEM	DESCRIPTION	240V Three Phase	380V Three Phase	415V Three Phase	480V Three Phase	600V Three Phase	380-400V CE 3 Wire	400-415V CE 3 Wire	380-400V CE 4 Wire	400-415V CE 4 Wire
28	Tank with Gaskets	R01.02.003.00	R01.02.003.00	R01.02.003.00	R01.02.003.00	R01.02.003.00	R01.02.003.00	R01.02.003.00	R01.02.003.00	R01.02.003.00
29	Heating Element with Gasket Quantity	R02.04.401.00 3	R02.04.501.00 3	R02.04.401.00 3	R02.04.404.00 3	R02.04.402.00 3	R02.04.401.00 3	R02.04.401.00 3	R02.04.401.00 3	R02.04.401.00 3
30	Contactor Quantity	02.01.018.00 1	02.01.016.00 1	02.01.016.00 1	02.01.016.00 1	02.01.016.00 1	02.01.016.00 2	02.01.016.00 2	02.01.016.00 2	02.01.016.00 2
31	Thermostat Control	02.16.024.00	02.16.024.00	02.16.024.00	02.16.024.00	02.16.024.00	02.16.024.00	02.16.024.00	02.16.024.00	02.16.024.00
32	Low Water Cut Off Board	02.01.001.00	02.01.001.00	02.01.001.00	02.01.001.00	02.01.001.00	02.01.164.00	02.01.164.00	02.01.164.00	02.01.164.00
33	Transformer, Step Down	---	R02.17.003.00	R02.17.002.00	R02.17.002.00	02.17.009.00	02.17.043.00	02.17.043.00	---	---
34	Terminal Block	R02.15.046.00	---	---	---	---	R02.15.035.00	R02.15.035.00	02.15.044.00	02.15.044.00
35	Indicator Light, Red	02.19.151.00	02.19.151.00	02.19.151.00	02.19.151.00	02.19.151.00	---	---	---	---
36	Indicator Light, Green	02.19.150.00	02.19.150.00	02.19.150.00	02.19.150.00	02.19.150.00	02.19.150.00	02.19.150.00	02.19.150.00	02.19.150.00
37A	Power Fuse Block Quantity	---	---	---	---	---	---	---	---	---
37B	Power Fuse Block Quantity	---	---	---	---	---	---	---	---	---
37C	Power Fuse Block Quantity	---	---	---	---	---	---	---	---	---
37D	Power Fuse Block Quantity	---	---	---	---	---	---	---	---	---
38A	Power Fuse (2 Pack) Quantity	---	---	---	---	---	---	---	---	---
38B	Power Fuse (2 Pack) Quantity	---	---	---	---	---	---	---	---	---
38C	Power Fuse (2 Pack) Quantity	---	---	---	---	---	---	---	---	---
39	Control Fuse Block	02.03.004.00	---	---	---	---	---	---	---	---
40	Control Fuse (2 Pack)	R02.03.001.02	R02.03.005.02	R02.03.005.02	R02.03.005.02	R02.03.021.02	---	---	---	---
41A	Tube, Inlet Water	03.30.004.00	03.30.004.00	03.30.004.00	03.30.004.00	03.30.004.00	03.30.004.00	03.30.004.00	03.30.004.00	03.30.004.00
41B	Tube, Inlet Water	---	---	---	---	---	---	---	---	---
42A	Nipple, Outlet Water	03.11.008.00	03.11.008.00	03.11.008.00	03.11.008.00	03.11.008.00	03.11.008.00	03.11.008.00	03.11.008.00	03.11.008.00
42B	Tube, Outlet Water	---	---	---	---	---	---	---	---	---
	Electrical Diagram	HC1-390	HC1-396	HC1-396	HC1-395	HC1-396	HS1-4931	HS1-4931	HS1-4718	HS1-4718

Shaded area reflects export models only.

**PARTS SPECIFIC TO MODEL C-13**

ITEM	DESCRIPTION	208V		240V		480V		208V		240V		480V	
		Single Phase	Three Phase	Single Phase	Three Phase	Single Phase	Three Phase	Single Phase	Three Phase	Single Phase	Three Phase	Single Phase	Three Phase
28	Tank with Gaskets	R01.02.003.00	R01.02.003.00	R01.02.003.00	R01.02.003.00	---	---	R01.02.003.00	R01.02.003.00	R01.02.003.00	R01.02.003.00	R01.02.003.00	R01.02.003.00
29	Heating Element with Gasket Quantity	R02.04.450.00 3	R02.04.450.00 3	R02.04.451.00 3	R02.04.451.00 3	---	---	R02.04.453.00 3	R02.04.450.00 3	R02.04.450.00 3	R02.04.450.00 3	R02.04.450.00 3	R02.04.451.00 3
30	Contactor Quantity	02.01.017.00 1	02.01.015.00 1	02.01.017.00 1	02.01.015.00 1	---	---	02.01.015.00 1	02.01.018.00 1	02.01.018.00 1	02.01.018.00 1	02.01.018.00 1	02.01.018.00 1
31	Thermostat Control	02.16.024.00	02.16.024.00	02.16.024.00	02.16.024.00	---	---	02.16.024.00	02.16.024.00	02.16.024.00	02.16.024.00	02.16.024.00	02.16.024.00
32	Low Water Cut Off Board	02.01.006.00	02.01.006.00	02.01.006.00	02.01.006.00	---	---	02.01.006.00	02.01.006.00	02.01.006.00	02.01.006.00	02.01.006.00	02.01.001.00
33	Transformer, Step Down	02.17.004.00	02.17.004.00	02.17.004.00	02.17.004.00	---	---	02.17.004.00	02.17.004.00	02.17.004.00	02.17.004.00	02.17.005.00	---
34	Terminal Block	---	R02.15.046.00	---	R02.15.046.00	---	---	---	---	---	---	---	---
35	Indicator Light, Red	02.19.154.00	02.19.154.00	02.19.154.00	02.19.154.00	---	---	---	---	---	---	---	---
36	Indicator Light, Green	---	---	---	---	---	---	---	---	---	---	---	---
37A	Power Fuse Block Quantity	02.41.005.00 1	---	02.41.005.00 1	---	---	---	---	---	---	---	---	---
37B	Power Fuse Block Quantity	---	---	---	---	---	---	---	---	---	---	---	---
37C	Power Fuse Block Quantity	---	---	---	---	---	---	---	---	---	---	---	---
37D	Power Fuse Block Quantity	---	---	---	---	---	---	---	---	---	---	---	---
38A	Power Fuse (2 Pack) (35 Amp) Quantity	R02.03.030.02 1	---	R02.03.030.02 1	---	---	---	---	---	---	---	---	---
38B	Power Fuse (2 Pack) (60 Amp) Quantity	R02.03.033.02 1	---	R02.03.033.02 1	---	---	---	---	---	---	---	---	---
38C	Power Fuse (2 Pack) Quantity	---	---	---	---	---	---	---	---	---	---	---	---
39	Control Fuse Block	02.03.022.00	02.03.022.00	02.03.022.00	02.03.022.00	---	---	02.03.022.00	02.03.022.00	02.03.022.00	02.03.022.00	02.03.022.00	02.03.004.00
40	Control Fuse (2 Pack)	R02.03.014.02	R02.03.014.02	R02.03.014.02	R02.03.014.02	---	---	R02.03.014.02	R02.03.014.02	R02.03.014.02	R02.03.014.02	R02.03.013.02	R02.03.001.02
41A	Tube, Inlet Water	03.30.004.00	03.30.004.00	03.30.004.00	03.30.004.00	---	---	03.30.004.00	03.30.004.00	03.30.004.00	03.30.004.00	03.30.004.00	03.30.004.00
41B	Tube, Inlet Water	---	---	---	---	---	---	---	---	---	---	---	---
42A	Nipple, Outlet Water	03.11.008.00	03.11.008.00	03.11.008.00	03.11.008.00	---	---	03.11.008.00	03.11.008.00	03.11.008.00	03.11.008.00	03.11.008.00	03.11.008.00
42B	Tube, Outlet Water	---	---	---	---	---	---	---	---	---	---	---	---
	Electrical Diagram	HS1-2073	HC1-2465	HS1-2073	HC1-2465	---	---	HC1-2465	HC1-390	HC1-390	HC1-390	HC1-390	HC1-390

Shaded area reflects **export models only**.



**PARTS SPECIFIC TO MODEL C-13**

ITEM	DESCRIPTION	240V Three Phase	380V Three Phase	415V Three Phase	480V Three Phase	600V Three Phase	380-400V CE 3 Wire	400-415V CE 3 Wire	380-400V CE 4 Wire	400-415V CE 4 Wire
28	Tank with Gaskets	R01.02.003.00	R01.02.003.00	R01.02.003.00	R01.02.003.00	R01.02.003.00	R01.02.003.00	R01.02.003.00	R01.02.003.00	R01.02.003.00
29	Heating Element with Gasket Quantity	R02.04.451.00 3	R02.04.451.00 3	R02.04.451.00 3	R02.04.453.00 3	R02.04.353.00 3	R02.04.451.00 3	R02.04.451.00 3	R02.04.451.00 3	R02.04.451.00 3
30	Contactor Quantity	02.01.018.00 1	02.01.016.00 1	02.01.016.00 1	02.01.016.00 1	02.01.016.00 1	02.01.016.00 2	02.01.016.00 2	02.01.016.00 2	02.01.016.00 2
31	Thermostat Control	02.16.024.00	02.16.024.00	02.16.024.00	02.16.024.00	02.16.024.00	02.16.024.00	02.16.024.00	02.16.024.00	02.16.024.00
32	Low Water Cut Off Board	02.01.001.00	02.01.001.00	02.01.001.00	02.01.001.00	02.01.001.00	02.01.164.00	02.01.164.00	02.01.164.00	02.01.164.00
33	Transformer, Step Down	---	R02.17.003.00	R02.17.002.00	R02.17.002.00	02.17.009.00	02.17.043.00	02.17.043.00	---	---
34	Terminal Block	R02.15.046.00	---	---	---	---	R02.15.035.00	02.15.044.00	02.15.044.00	02.15.044.00
35	Indicator Light, Red	02.19.151.00	02.19.151.00	02.19.151.00	02.19.151.00	02.19.151.00	---	---	---	---
36	Indicator Light, Green	02.19.150.00	02.19.150.00	02.19.150.00	02.19.150.00	02.19.150.00	02.19.150.00	02.19.150.00	02.19.151.00	02.19.151.00
37A	Power Fuse Block Quantity	---	---	---	---	---	---	---	---	---
37B	Power Fuse Block Quantity	---	---	---	---	---	---	---	---	---
37C	Power Fuse Block Quantity	---	---	---	---	---	---	---	---	---
37D	Power Fuse Block Quantity	---	---	---	---	---	---	---	---	---
38A	Power Fuse (2 Pack) Quantity	---	---	---	---	---	---	---	---	---
38B	Power Fuse (2 Pack) Quantity	---	---	---	---	---	---	---	---	---
38C	Power Fuse (2 Pack) Quantity	---	---	---	---	---	---	---	---	---
39	Control Fuse Block	02.03.004.00	---	---	---	---	---	---	---	---
40	Control Fuse (2 Pack)	R02.03.001.02	R02.03.005.02	R02.03.005.02	R02.03.005.02	R02.03.021.02	---	---	---	---
41A	Tube, Inlet Water	03.30.004.00	03.30.004.00	03.30.004.00	03.30.004.00	03.30.004.00	03.30.004.00	03.30.004.00	03.30.004.00	03.30.004.00
41B	Tube, Inlet Water	---	---	---	---	---	---	---	---	---
42A	Nipple, Outlet Water	03.11.008.00	03.11.008.00	03.11.008.00	03.11.008.00	03.11.008.00	03.11.008.00	03.11.008.00	03.11.008.00	03.11.008.00
42B	Tube, Outlet Water	---	---	---	---	---	---	---	---	---
42B	Electrical Diagram	HC1-390	HC1-396	HC1-396	HC1-395	HC1-396	HS1-4931	HS1-4931	HS1-4718	HS1-4718

Shaded area reflects export models only.

**PARTS SPECIFIC TO MODEL C-15**

ITEM	DESCRIPTION	208V		240V		480V		208V		240V		480V	
		Single Phase	Three Phase	Single Phase	Three Phase	Single Phase	Three Phase	Single Phase	Three Phase	Single Phase	Three Phase	Single Phase	Three Phase
28	Tank with Gaskets	R01.02.003.00	R01.02.003.00	R01.02.003.00	R01.02.003.00	---	---	R01.02.003.00	R01.02.003.00	R01.02.003.00	R01.02.003.00	---	---
29	Heating Element with Gasket Quantity	R02.04.500.00 3	R02.04.500.00 3	R02.04.501.00 3	R02.04.501.00 3	---	---	R02.04.502.00 3	R02.04.500.00 3	R02.04.500.00 3	R02.04.500.00 3	---	---
30	Contactor Quantity	02.01.017.00 1	02.01.015.00 1	02.01.017.00 1	02.01.015.00 1	---	---	02.01.015.00 1	02.01.018.00 1	02.01.018.00 1	02.01.018.00 1	---	---
31	Thermostat Control	02.16.024.00	02.16.024.00	02.16.024.00	02.16.024.00	---	---	02.16.024.00	02.16.024.00	02.16.024.00	02.16.024.00	---	---
32	Low Water Cut Off Board	02.01.006.00	02.01.006.00	02.01.006.00	02.01.006.00	---	---	02.01.006.00	02.01.006.00	02.01.001.00	02.01.001.00	---	---
33	Transformer, Step Down	02.17.004.00	02.17.004.00	02.17.004.00	02.17.004.00	---	---	02.17.004.00	02.17.004.00	---	---	---	---
34	Terminal Block	---	R02.15.046.00	---	R02.15.046.00	---	---	---	---	R02.15.046.00	R02.15.046.00	---	---
35	Indicator Light, Red	02.19.154.00	02.19.154.00	02.19.154.00	02.19.154.00	---	---	02.19.154.00	02.19.151.00	02.19.151.00	02.19.151.00	---	---
36	Indicator Light, Green	---	---	---	---	---	---	---	---	02.19.150.00	02.19.150.00	---	---
37A	Power Fuse Block Quantity	02.41.005.00 1	---	02.41.005.00 1	---	---	---	---	---	---	---	---	---
37B	Power Fuse Block Quantity	---	---	---	---	---	---	---	---	---	---	---	---
37C	Power Fuse Block Quantity	---	---	---	---	---	---	---	---	---	---	---	---
37D	Power Fuse Block Quantity	---	---	---	---	---	---	---	---	---	---	---	---
38A	Power Fuse (2 Pack) (35 Amp) Quantity	R02.03.030.02 1	---	R02.03.030.02 1	---	---	---	---	---	---	---	---	---
38B	Power Fuse (2 Pack) (60 Amp) Quantity	R02.03.033.02 1	---	R02.03.033.02 1	---	---	---	---	---	---	---	---	---
38C	Power Fuse (2 Pack) Quantity	---	---	---	---	---	---	---	---	---	---	---	---
39	Control Fuse Block	02.03.022.00	02.03.022.00	02.03.022.00	02.03.022.00	---	---	02.03.023.00	02.03.004.00	02.03.004.00	02.03.004.00	---	---
40	Control Fuse (2 Pack)	R02.03.014.02	R02.03.014.02	R02.03.014.02	R02.03.014.02	---	---	R02.03.013.02	R02.03.001.02	R02.03.001.02	R02.03.001.02	---	---
41A	Tube, Inlet Water	03.30.004.00	03.30.004.00	03.30.004.00	03.30.004.00	---	---	03.30.004.00	03.30.004.00	03.30.004.00	03.30.004.00	---	---
41B	Tube, Inlet Water	---	---	---	---	---	---	---	---	---	---	---	---
42A	Nipple, Outlet Water	03.11.008.00	03.11.008.00	03.11.008.00	03.11.008.00	---	---	03.11.008.00	03.11.008.00	03.11.008.00	03.11.008.00	---	---
42B	Tube, Outlet Water	---	---	---	---	---	---	---	---	---	---	---	---
	Electrical Diagram	HS1-2073	HC1-2465	HS1-2073	HC1-2465	---	---	HC1-2465	HC1-390	HC1-390	HC1-390	---	---

Shaded area reflects **export models only**.

**PARTS SPECIFIC TO MODEL C-15**

ITEM	DESCRIPTION	240V Three Phase	380V Three Phase	415V Three Phase	480V Three Phase	600V Three Phase	380-400V CE 3 Wire	400-415V CE 3 Wire	380-400V CE 4 Wire	400-415V CE 4 Wire
28	Tank with Gaskets	R01.02.003.00	R01.02.003.00	R01.02.003.00	R01.02.003.00	R01.02.003.00	R01.02.003.00	R01.02.003.00	R01.02.003.00	R01.02.003.00
29	Heating Element with Gasket Quantity	R02.04.501.00 3	R02.04.603.00 3	R02.04.501.00 3	R02.04.502.00 3	R02.04.510.00 3	R02.04.501.00 3	R02.04.501.00 3	R02.04.501.00 3	R02.04.501.00 3
30	Contactor Quantity	02.01.018.00 1	02.01.016.00 1	02.01.016.00 1	02.01.016.00 1	02.01.016.00 1	02.01.016.00 2	02.01.016.00 2	02.01.016.00 2	02.01.016.00 2
31	Thermostat Control	02.16.024.00	02.16.024.00	02.16.024.00	02.16.024.00	02.16.024.00	02.16.024.00	02.16.024.00	02.16.024.00	02.16.024.00
32	Low Water Cut Off Board	02.01.001.00	02.01.001.00	02.01.001.00	02.01.001.00	02.01.001.00	02.01.164.00	02.01.164.00	02.01.164.00	02.01.164.00
33	Transformer, Step Down	---	R02.17.003.00	R02.17.002.00	R02.17.002.00	02.17.009.00	02.17.043.00	02.17.043.00	---	---
34	Terminal Block	R02.15.046.00	---	---	---	---	R02.15.035.00	R02.15.035.00	02.15.044.00	02.15.044.00
35	Indicator Light, Red	02.19.151.00	02.19.151.00	02.19.151.00	02.19.151.00	02.19.151.00	---	---	---	---
36	Indicator Light, Green	02.19.150.00	02.19.150.00	02.19.150.00	02.19.150.00	02.19.150.00	02.19.150.00	02.19.150.00	02.19.150.00	02.19.150.00
37A	Power Fuse Block Quantity	---	---	---	---	---	---	---	---	---
37B	Power Fuse Block Quantity	---	---	---	---	---	---	---	---	---
37C	Power Fuse Block Quantity	---	---	---	---	---	---	---	---	---
37D	Power Fuse Block Quantity	---	---	---	---	---	---	---	---	---
38A	Power Fuse (2 Pack) Quantity	---	---	---	---	---	---	---	---	---
38B	Power Fuse (2 Pack) Quantity	---	---	---	---	---	---	---	---	---
38C	Power Fuse (2 Pack) Quantity	---	---	---	---	---	---	---	---	---
39	Control Fuse Block	02.03.004.00	---	---	---	---	---	---	---	---
40	Control Fuse (2 Pack)	R02.03.001.02	R02.03.005.02	R02.03.005.02	R02.03.005.02	R02.03.021.02	---	---	---	---
41A	Tube, Inlet Water	03.30.004.00	03.30.004.00	03.30.004.00	03.30.004.00	03.30.004.00	03.30.004.00	03.30.004.00	03.30.004.00	03.30.004.00
41B	Tube, Inlet Water	---	---	---	---	---	---	---	---	---
42A	Nipple, Outlet Water	03.11.008.00	03.11.008.00	03.11.008.00	03.11.008.00	03.11.008.00	03.11.008.00	03.11.008.00	03.11.008.00	03.11.008.00
42B	Tube, Outlet Water	---	---	---	---	---	---	---	---	---
42B	Electrical Diagram	HC1-390	HC1-396	HC1-396	HC1-395	HC1-396	HS1-4931	HS1-4931	HS1-4718	HS1-4718

Shaded area reflects **export models only**.

**PARTS SPECIFIC TO MODEL C-17**

ITEM	DESCRIPTION	208V		240V		480V		208V		208V	
		Single Phase	Three Phase	Single Phase	Three Phase	Single Phase	Three Phase	Single Phase	Three Phase	Single Phase	Three Phase
28	Tank with Gaskets	---	R01.02.003.00	---	---	---	---	---	---	R01.02.003.00	---
29	Heating Element with Gasket Quantity	---	R02.04.600.00	---	---	---	---	---	---	R02.04.600.00	---
30	Contactors Quantity	---	02.01.015.00	---	---	---	---	---	---	02.01.018.00	---
31	Thermostat Control	---	02.16.024.00	---	---	---	---	---	---	02.16.024.00	---
32	Low Water Cut Off Board	---	02.01.006.00	---	---	---	---	---	---	02.01.001.00	---
33	Transformer, Step Down	---	02.17.004.00	---	---	---	---	---	---	---	---
34	Terminal Block	---	R02.15.046.00	---	---	---	---	---	---	R02.15.046.00	---
35	Indicator Light, Red	---	02.19.154.00	---	---	---	---	---	---	02.19.151.00	---
36	Indicator Light, Green	---	---	---	---	---	---	---	---	02.19.150.00	---
37A	Power Fuse Block Quantity	---	---	---	---	---	---	---	---	---	---
37B	Power Fuse Block Quantity	---	---	---	---	---	---	---	---	---	---
37C	Power Fuse Block Quantity	---	---	---	---	---	---	---	---	---	---
37D	Power Fuse Block Quantity	---	---	---	---	---	---	---	---	---	---
38A	Power Fuse (2 Pack) Quantity	---	---	---	---	---	---	---	---	---	---
38B	Power Fuse (2 Pack) Quantity	---	---	---	---	---	---	---	---	---	---
38C	Power Fuse (2 Pack) Quantity	---	---	---	---	---	---	---	---	---	---
39	Control Fuse Block	---	02.03.022.00	---	---	---	---	---	---	02.03.004.00	---
40	Control Fuse (2 Pack)	---	R02.03.014.02	---	---	---	---	---	---	R02.03.001.02	---
41A	Tube, Inlet Water	---	03.30.004.00	---	---	---	---	---	---	03.30.004.00	---
41B	Tube, Inlet Water	---	---	---	---	---	---	---	---	---	---
42A	Nipple, Outlet Water	---	03.11.008.00	---	---	---	---	---	---	03.11.008.00	---
42B	Tube, Outlet Water	---	---	---	---	---	---	---	---	---	---
	Electrical Diagram	---	HC1-2465	---	---	---	---	---	---	HC1-390	---

Shaded area reflects export models only.

**PARTS SPECIFIC TO MODEL C-17**

ITEM	DESCRIPTION	240V Three Phase	380V Three Phase	415V Three Phase	480V Three Phase	600V Three Phase	380-400V CE 3 Wire	400-415V CE 3 Wire	380-400V CE 4 Wire	400-415V CE 4 Wire
28	Tank with Gaskets	---	---	---	---	---	---	---	---	---
29	Heating Element with Gasket Quantity	---	---	---	---	---	---	---	---	---
30	Contactors Quantity	---	---	---	---	---	---	---	---	---
31	Thermostat Control	---	---	---	---	---	---	---	---	---
32	Low Water Cut Off Board	---	---	---	---	---	---	---	---	---
33	Transformer, Step Down	---	---	---	---	---	---	---	---	---
34	Terminal Block	---	---	---	---	---	---	---	---	---
35	Indicator Light, Red	---	---	---	---	---	---	---	---	---
36	Indicator Light, Green	---	---	---	---	---	---	---	---	---
37A	Power Fuse Block Quantity	---	---	---	---	---	---	---	---	---
37B	Power Fuse Block Quantity	---	---	---	---	---	---	---	---	---
37C	Power Fuse Block Quantity	---	---	---	---	---	---	---	---	---
37D	Power Fuse Block Quantity	---	---	---	---	---	---	---	---	---
38A	Power Fuse (2 Pack) Quantity	---	---	---	---	---	---	---	---	---
38B	Power Fuse (2 Pack) Quantity	---	---	---	---	---	---	---	---	---
38C	Power Fuse (2 Pack) Quantity	---	---	---	---	---	---	---	---	---
39	Control Fuse Block	---	---	---	---	---	---	---	---	---
40	Control Fuse (2 Pack)	---	---	---	---	---	---	---	---	---
41A	Tube, Inlet Water	---	---	---	---	---	---	---	---	---
41B	Tube, Inlet Water	---	---	---	---	---	---	---	---	---
42A	Nipple, Outlet Water	---	---	---	---	---	---	---	---	---
42B	Tube, Outlet Water	---	---	---	---	---	---	---	---	---
	Electrical Diagram	---	---	---	---	---	---	---	---	---

Shaded area reflects export models only.

**PARTS SPECIFIC TO MODEL C-18**

ITEM	DESCRIPTION	208V		240V		480V		208V		240V		480V		208V		240V	
		Single Phase	Three Phase	Single Phase	Three Phase	Single Phase	Three Phase	Single Phase	Three Phase	Single Phase	Three Phase	Single Phase	Three Phase	Single Phase	Three Phase	Single Phase	Three Phase
28	Tank with Gaskets	R01.02.003.00	---	R01.02.003.00	R01.02.003.00	---	R01.02.003.00	---	R01.02.003.00	R01.02.003.00	---	---	---	---	R01.02.003.00	---	---
29	Heating Element with Gasket Quantity	R02.04.600A.00 3	---	R02.04.603.00 3	R02.04.603.00 3	---	R02.04.605.00 3	---	R02.04.600A.00 3	R02.04.600A.00 3	---	---	---	---	R02.04.603.00 3	---	---
30	Contactor Quantity	02.01.015.00 2	---	02.01.015.00 2	02.01.015.00 1	---	02.01.015.00 1	---	02.01.015.00 1	02.01.015.00 1	---	---	---	02.01.018.00 1	---	---	02.01.018.00 1
31	Thermostat Control	02.16.024.00	---	02.16.024.00	02.16.024.00	---	02.16.024.00	---	02.16.024.00	02.16.024.00	---	---	---	02.16.024.00	---	---	02.16.024.00
32	Low Water Cut Off Board	02.01.006.00	---	02.01.006.00	02.01.006.00	---	02.01.006.00	---	02.01.006.00	02.01.006.00	---	---	---	02.01.001.00	---	---	02.01.001.00
33	Transformer, Step Down	02.17.004.00	---	02.17.004.00	02.17.004.00	---	02.17.004.00	---	02.17.004.00	02.17.004.00	---	---	---	---	---	---	---
34	Terminal Block	---	---	---	R02.15.046.00	---	---	---	---	---	---	---	---	---	---	---	R02.15.046.00
35	Indicator Light, Red	02.19.154.00	---	02.19.154.00	02.19.154.00	---	02.19.154.00	---	02.19.154.00	02.19.154.00	---	---	---	02.19.151.00	---	---	02.19.151.00
36	Indicator Light, Green	---	---	---	---	---	---	---	---	---	---	---	---	---	---	---	02.19.150.00
37A	Power Fuse Block Quantity	02.41.010.00 2	---	02.41.010.00 2	---	---	---	---	02.41.010.00 2	---	---	---	---	---	---	---	---
37B	Power Fuse Block Quantity	---	---	---	---	---	---	---	---	---	---	---	---	---	---	---	---
37C	Power Fuse Block Quantity	---	---	---	---	---	---	---	---	---	---	---	---	---	---	---	---
37D	Power Fuse Block Quantity	---	---	---	---	---	---	---	---	---	---	---	---	---	---	---	---
38A	Power Fuse (2 Pack) (40 Amp) Quantity	R02.03.031.02 3	---	R02.03.031.02 3	---	---	---	---	R02.03.031.02 3	---	---	---	---	---	---	---	---
38B	Power Fuse (2 Pack) Quantity	---	---	---	---	---	---	---	---	---	---	---	---	---	---	---	---
38C	Power Fuse (2 Pack) Quantity	---	---	---	---	---	---	---	---	---	---	---	---	---	---	---	---
39	Control Fuse Block	02.03.022.00	---	02.03.022.00	02.03.022.00	---	02.03.022.00	---	02.03.022.00	02.03.022.00	---	---	---	02.03.004.00	---	---	02.03.004.00
40	Control Fuse (2 Pack)	R02.03.014.02	---	R02.03.014.02	R02.03.014.02	---	R02.03.014.02	---	R02.03.014.02	R02.03.014.02	---	---	---	R02.03.001.02	---	---	R02.03.001.02
41A	Tube, Inlet Water	03.30.004.00	---	03.30.004.00	03.30.004.00	---	03.30.004.00	---	03.30.004.00	03.30.004.00	---	---	---	03.30.004.00	---	---	03.30.004.00
41B	Tube, Inlet Water	---	---	---	---	---	---	---	---	---	---	---	---	---	---	---	---
42A	Nipple, Outlet Water	03.11.008.00	---	03.11.008.00	03.11.008.00	---	03.11.008.00	---	03.11.008.00	03.11.008.00	---	---	---	03.11.008.00	---	---	03.11.008.00
42B	Tube, Outlet Water	---	---	---	---	---	---	---	---	---	---	---	---	---	---	---	---
	Electrical Diagram	HC1-2469	---	HC1-2469	HC1-2465	---	HC1-2465	---	HC1-2469	HC1-2465	---	---	---	HC1-390	---	---	HC1-390

Shaded area reflects **export models only**.

**PARTS SPECIFIC TO MODEL C-18**

ITEM	DESCRIPTION	240V Three Phase	380V Three Phase	415V Three Phase	480V Three Phase	600V Three Phase	380-400V CE 3 Wire	400-415V CE 3 Wire	380-400V CE 4 Wire	400-415V CE 4 Wire
28	Tank with Gaskets	R01.02.003.00	R01.02.003.00	R01.02.003.00	R01.02.003.00	R01.02.003.00	R01.02.003.00	R01.02.003.00	R01.02.003.00	R01.02.003.00
29	Heating Element with Gasket Quantity	R02.04.603.00 3	R02.04.601.00 3	R02.04.603.00 3	R02.04.605.00 3	R02.04.604.00 3	R02.04.603.00 3	R02.04.603.00 3	R02.04.603.00 3	R02.04.603.00 3
30	Contactor Quantity	02.01.018.00 1	02.01.016.00 1	02.01.016.00 1	02.01.016.00 1	02.01.016.00 1	02.01.016.00 2	02.01.016.00 2	02.01.016.00 2	02.01.016.00 2
31	Thermostat Control	02.16.024.00	02.16.024.00	02.16.024.00	02.16.024.00	02.16.024.00	02.16.024.00	02.16.024.00	02.16.024.00	02.16.024.00
32	Low Water Cut Off Board	02.01.001.00	02.01.001.00	02.01.001.00	02.01.001.00	02.01.001.00	02.01.164.00	02.01.164.00	02.01.164.00	02.01.164.00
33	Transformer, Step Down	---	R02.17.003.00	R02.17.002.00	R02.17.002.00	02.17.009.00	02.17.043.00	02.17.043.00	---	---
34	Terminal Block	R02.15.046.00	---	---	---	---	R02.15.035.00	R02.15.035.00	02.15.044.00	02.15.044.00
35	Indicator Light, Red	02.19.151.00	02.19.151.00	02.19.151.00	02.19.151.00	02.19.151.00	---	---	---	---
36	Indicator Light, Green	02.19.150.00	02.19.150.00	02.19.150.00	02.19.150.00	02.19.150.00	02.19.150.00	02.19.150.00	02.19.150.00	02.19.150.00
37A	Power Fuse Block Quantity	---	---	---	---	---	---	---	---	---
37B	Power Fuse Block Quantity	---	---	---	---	---	---	---	---	---
37C	Power Fuse Block Quantity	---	---	---	---	---	---	---	---	---
37D	Power Fuse Block Quantity	---	---	---	---	---	---	---	---	---
38A	Power Fuse (2 Pack) Quantity	---	---	---	---	---	---	---	---	---
38B	Power Fuse (2 Pack) Quantity	---	---	---	---	---	---	---	---	---
38C	Power Fuse (2 Pack) Quantity	---	---	---	---	---	---	---	---	---
39	Control Fuse Block	02.03.004.00	---	---	---	---	---	---	---	---
40	Control Fuse (2 Pack)	R02.03.001.02	R02.03.005.02	R02.03.005.02	R02.03.005.02	R02.03.021.02	---	---	---	---
41A	Tube, Inlet Water	03.30.004.00	03.30.004.00	03.30.004.00	03.30.004.00	03.30.004.00	03.30.004.00	03.30.004.00	03.30.004.00	03.30.004.00
41B	Tube, Inlet Water	---	---	---	---	---	---	---	---	---
42A	Nipple, Outlet Water	03.11.008.00	03.11.008.00	03.11.008.00	03.11.008.00	03.11.008.00	03.11.008.00	03.11.008.00	03.11.008.00	03.11.008.00
42B	Tube, Outlet Water	---	---	---	---	---	---	---	---	---
	Electrical Diagram	HC1-390	HC1-396	HC1-396	HC1-395	HC1-396	HS1-4931	HS1-4931	HS1-4718	HS1-4718

Shaded area reflects export models only.

**PARTS SPECIFIC TO MODEL C-24**

ITEM	DESCRIPTION	208V		240V		480V		208V		240V		480V		208V		240V	
		Single Phase	Three Phase	Single Phase	Three Phase	Single Phase	Three Phase	Single Phase	Three Phase	Single Phase	Three Phase	Single Phase	Three Phase	Single Phase	Three Phase	Single Phase	Three Phase
28	Tank with Gaskets	R01.02.031.00	R01.02.031.00	R01.02.031.00	R01.02.031.00												
29	Heating Element with Gasket Quantity	R02.04.400.00 6	R02.04.400.00 6	R02.04.401.00 6	R02.04.401.00 6												
30	Contactor Quantity	02.01.015.00 2	02.01.015.00 2	02.01.015.00 2	02.01.015.00 2												
31	Thermostat Control	02.16.003.00	02.16.003.00	02.16.003.00	02.16.003.00												
32	Low Water Cut Off Board	02.01.006.00	02.01.006.00	02.01.006.00	02.01.006.00												
33	Transformer, Step Down	02.17.004.00	02.17.004.00	02.17.004.00	02.17.004.00												
34	Terminal Block																
35	Indicator Light, Red	02.19.154.00	02.19.154.00	02.19.154.00	02.19.154.00												
36	Indicator Light, Green																
37A	Power Fuse Block Quantity	02.41.010.00 2	02.41.010.00 2	02.41.010.00 2	02.41.010.00 2												
37B	Power Fuse Block Quantity		02.41.001.00 1		02.41.001.00 1												
37C	Power Fuse Block Quantity		02.41.005.00 1		02.41.005.00 1												
37D	Power Fuse Block Quantity																
38A	Power Fuse (2 Pack) (60 Amp) Quantity	R02.03.033.02 3	R02.03.033.02 3	R02.03.033.02 3	R02.03.033.02 3												
38B	Power Fuse (2 Pack) (50 Amp) Quantity		R02.03.032.02 3		R02.03.032.02 3												
38C	Power Fuse (2 Pack) Quantity																
39	Control Fuse Block	02.03.022.00	02.03.022.00	02.03.022.00	02.03.022.00												
40	Control Fuse (2 Pack)	R02.03.014.02	R02.03.014.02	R02.03.014.02	R02.03.014.02												
41A	Tube, Inlet Water																
41B	Tube, Inlet Water	03.30.007.00	03.30.007.00	03.30.007.00	03.30.007.00												
42A	Nipple, Outlet Water																
42B	Tube, Outlet Water	03.30.009.00	03.30.009.00	03.30.009.00	03.30.009.00												
	Electrical Diagram	HC1-2471	HC1-2481	HC1-2471	HC1-2481												

Shaded area reflects **export models only**.



**PARTS SPECIFIC TO MODEL C-24**

ITEM	DESCRIPTION	240V Three Phase	380V Three Phase	415V Three Phase	480V Three Phase	600V Three Phase	380-400V CE 3 Wire	400-415V CE 3 Wire	380-400V CE 4 Wire	400-415V CE 4 Wire
28	Tank with Gaskets	R01.02.031.00	R01.02.031.00	R01.02.031.00	R01.02.031.00	R01.02.031.00	R01.02.031.00	R01.02.031.00	R01.02.031.00	R01.02.031.00
29	Heating Element with Gasket Quantity	R02.04.401.00 6	R02.04.501.00 6	R02.04.401.00 6	R02.04.404.00 6	R02.04.402.00 6	R02.04.401.00 6	R02.04.401.00 6	R02.04.401.00 6	R02.04.401.00 6
30	Contactor Quantity	02.01.016.00 2	02.01.016.00 2	02.01.016.00 2	02.01.016.00 2	02.01.016.00 2	02.01.016.00 2	02.01.016.00 2	02.01.016.00 2	02.01.016.00 2
31	Thermostat Control	02.16.003.00	02.16.003.00	02.16.003.00	02.16.003.00	02.16.003.00	02.16.003.00	02.16.003.00	02.16.003.00	02.16.003.00
32	Low Water Cut Off Board	02.01.001.00	02.01.001.00	02.01.001.00	02.01.001.00	02.01.001.00	02.01.164.00	02.01.164.00	02.01.164.00	02.01.164.00
33	Transformer, Step Down	---	R02.17.003.00	R02.17.002.00	R02.17.002.00	02.17.009.00	02.17.043.00	02.17.043.00	---	---
34	Terminal Block	02.15.021.00	R02.15.046.00	R02.15.046.00	02.15.021.00	R02.15.046.00	R02.15.035.00	R02.15.035.00	02.15.044.00	02.15.044.00
35	Indicator Light, Red	02.19.151.00	02.19.151.00	02.19.151.00	02.19.151.00	02.19.151.00	---	---	---	---
36	Indicator Light, Green	02.19.150.00	02.19.150.00	02.19.150.00	02.19.150.00	02.19.150.00	02.19.150.00	02.19.150.00	02.19.150.00	02.19.150.00
37A	Power Fuse Block Quantity	---	---	---	---	---	---	---	---	---
37B	Power Fuse Block Quantity	---	---	---	---	---	---	---	---	---
37C	Power Fuse Block Quantity	---	---	---	---	---	---	---	---	---
37D	Power Fuse Block Quantity	---	---	---	---	---	---	---	---	---
38A	Power Fuse (2 Pack) Quantity	---	---	---	---	---	---	---	---	---
38B	Power Fuse (2 Pack) Quantity	---	---	---	---	---	---	---	---	---
38C	Power Fuse (2 Pack) Quantity	---	---	---	---	---	---	---	---	---
39	Control Fuse Block	02.03.004.00	---	---	---	02.03.016.00	02.03.016.00	02.03.016.00	---	---
40	Control Fuse (2 Pack)	R02.03.001.02	R02.03.005.02	R02.03.005.02	R02.03.005.02	R02.03.021.02	R02.03.021.00	R02.03.021.02	---	---
41A	Tube, Inlet Water	---	---	---	---	---	---	---	---	---
41B	Tube, Inlet Water	03.30.007.00	03.30.007.00	03.30.007.00	03.30.007.00	03.30.007.00	03.30.007.00	03.30.007.00	03.30.007.00	03.30.007.00
42A	Nipple, Outlet Water	---	---	---	---	---	---	---	---	---
42B	Tube, Outlet Water	03.30.009.00	03.30.009.00	03.30.009.00	03.30.009.00	03.30.009.00	03.30.009.00	03.30.009.00	03.30.009.00	03.30.009.00
42B	Electrical Diagram	HC1-1183	HS1-3887	HS1-3887	HC1-2177	HS1-3887	HS1-4932	HS1-4932	HS1-4918	HS1-4918

Shaded area reflects **export models only**.

**PARTS SPECIFIC TO MODEL C-27**

ITEM	DESCRIPTION	208V Single Phase	208V Three Phase	240V Single Phase	240V Three Phase	480V Single Phase	480V Three Phase	208V Single Phase	208V Three Phase	240V Single Phase	240V Three Phase	480V Single Phase	480V Three Phase	208V Single Phase	208V Three Phase	240V Single Phase	240V Three Phase
28	Tank with Gaskets	R01.02.031.00	R01.02.031.00	R01.02.031.00	R01.02.031.00	---	R01.02.031.00	R01.02.031.00	R01.02.031.00	R01.02.031.00	R01.02.031.00	---	R01.02.031.00	R01.02.031.00	R01.02.031.00	R01.02.031.00	R01.02.031.00
29	Heating Element with Gasket Quantity	R02.04.450.00 6	R02.04.450.00 6	R02.04.451.00 6	R02.04.451.00 6	---	R02.04.453.00 6	R02.04.450.00 6	R02.04.450.00 6	R02.04.451.00 6	R02.04.451.00 6	---	R02.04.453.00 6	R02.04.450.00 6	R02.04.450.00 6	R02.04.451.00 6	R02.04.451.00 6
30	Contactor Quantity	02.01.015.00 2	02.01.015.00 2	02.01.015.00 2	02.01.015.00 2	---	02.01.015.00 2	02.01.015.00 2	02.01.015.00 2	02.01.015.00 2	02.01.015.00 2	---	02.01.015.00 2	02.01.016.00 2	02.01.016.00 2	02.01.016.00 2	02.01.016.00 2
31	Thermostat Control	02.16.003.00	02.16.003.00	02.16.003.00	02.16.003.00	---	02.16.003.00	02.16.003.00	02.16.003.00	02.16.003.00	02.16.003.00	---	02.16.003.00	02.16.003.00	02.16.003.00	02.16.003.00	02.16.003.00
32	Low Water Cut Off Board	02.01.006.00	02.01.006.00	02.01.006.00	02.01.006.00	---	02.01.006.00	02.01.006.00	02.01.006.00	02.01.006.00	02.01.006.00	---	02.01.006.00	02.01.001.00	02.01.001.00	02.01.001.00	02.01.001.00
33	Transformer, Step Down	02.17.004.00	02.17.004.00	02.17.004.00	02.17.004.00	---	02.17.004.00	02.17.004.00	02.17.004.00	02.17.004.00	02.17.004.00	---	02.17.005.00	---	---	---	---
34	Terminal Block	---	---	---	---	---	---	---	---	---	---	---	---	---	---	---	---
35	Indicator Light, Red	02.19.154.00	02.19.154.00	02.19.154.00	02.19.154.00	---	02.19.154.00	02.19.154.00	02.19.154.00	02.19.154.00	02.19.154.00	---	02.15.046.00	02.15.021.00	02.15.021.00	02.15.021.00	02.15.021.00
36	Indicator Light, Green	---	---	---	---	---	---	---	---	---	---	---	---	02.19.151.00	02.19.151.00	02.19.151.00	02.19.151.00
37A	Power Fuse Block Quantity	02.41.010.00 2	---	02.41.010.00 2	---	---	---	02.41.010.00 2	---	---	---	---	---	---	---	---	---
37B	Power Fuse Block Quantity	---	02.41.001.00 1	---	02.41.001.00 1	---	---	---	02.41.001.00 1	---	02.41.001.00 1	---	---	---	---	---	---
37C	Power Fuse Block Quantity	---	02.41.005.00 1	---	02.41.005.00 1	---	---	---	02.41.005.00 1	---	02.41.005.00 1	---	---	---	---	---	---
37D	Power Fuse Block Quantity	---	---	---	---	---	---	---	---	---	---	---	---	---	---	---	---
38A	Power Fuse (2 Pack) (60 Amp) Quantity	R02.03.033.02 3	---	R02.03.033.02 3	---	---	---	R02.03.033.02 3	---	---	---	---	---	---	---	---	---
38B	Power Fuse (2 Pack) (50 Amp) Quantity	---	R02.03.032.02 3	---	R02.03.032.02 3	---	---	R02.03.032.02 3	---	---	R02.03.032.02 3	---	---	---	---	---	---
38C	Power Fuse (2 Pack) Quantity	---	---	---	---	---	---	---	---	---	---	---	---	---	---	---	---
39	Control Fuse Block	02.03.022.00	02.03.022.00	02.03.022.00	02.03.022.00	---	02.03.023.00	02.03.022.00	02.03.022.00	02.03.022.00	02.03.022.00	---	02.03.023.00	02.03.004.00	02.03.004.00	02.03.004.00	02.03.004.00
40	Control Fuse (2 Pack)	R02.03.014.02	R02.03.014.02	R02.03.014.02	R02.03.014.02	---	R02.03.013.02	R02.03.014.02	R02.03.014.02	R02.03.014.02	R02.03.014.02	---	R02.03.013.02	R02.03.001.02	R02.03.001.02	R02.03.001.02	R02.03.001.02
41A	Tube, Inlet Water	---	---	---	---	---	---	---	---	---	---	---	---	---	---	---	---
41B	Tube, Inlet Water	03.30.007.00	03.30.007.00	03.30.007.00	03.30.007.00	---	03.30.007.00	03.30.007.00	03.30.007.00	03.30.007.00	03.30.007.00	---	03.30.007.00	03.30.007.00	03.30.007.00	03.30.007.00	03.30.007.00
42A	Nipple, Outlet Water	---	---	---	---	---	---	---	---	---	---	---	---	---	---	---	---
42B	Tube, Outlet Water	03.30.009.00	03.30.009.00	03.30.009.00	03.30.009.00	---	03.30.009.00	03.30.009.00	03.30.009.00	03.30.009.00	03.30.009.00	---	03.30.009.00	03.30.009.00	03.30.009.00	03.30.009.00	03.30.009.00
	Electrical Diagram	HC1-2471	HC1-2481	HC1-2471	HC1-2481	---	HC1-2475	HC1-2471	HC1-2471	HC1-2481	HC1-2481	---	HC1-1183	HC1-1183	HC1-1183	HC1-1183	HC1-1183

Shaded area reflects **export models only**.

**PARTS SPECIFIC TO MODEL C-27**

ITEM	DESCRIPTION	240V Three Phase	380V Three Phase	415V Three Phase	480V Three Phase	600V Three Phase	380-400V CE 3 Wire	400-415V CE 3 Wire	380-400V CE 4 Wire	400-415V CE 4 Wire
28	Tank with Gaskets	R01.02.031.00	R01.02.031.00	R01.02.031.00	R01.02.031.00	R01.02.031.00	R01.02.031.00	R01.02.031.00	R01.02.031.00	R01.02.031.00
29	Heating Element with Gasket Quantity	R02.04.451.00 6	R02.04.501.00 6	R02.04.451.00 6	R02.04.453.00 6	R02.04.452.00 6	R02.04.451.00 6	R02.04.451.00 6	R02.04.451.00 6	R02.04.451.00 6
30	Contactor Quantity	02.01.016.00 2	02.01.016.00 2	02.01.016.00 2	02.01.016.00 2	02.01.016.00 2	02.01.016.00 2	02.01.016.00 2	02.01.016.00 2	02.01.016.00 2
31	Thermostat Control	02.16.003.00	02.16.003.00	02.16.003.00	02.16.003.00	02.16.003.00	02.16.003.00	02.16.003.00	02.16.003.00	02.16.003.00
32	Low Water Cut Off Board	02.01.001.00	02.01.001.00	02.01.001.00	02.01.001.00	02.01.001.00	02.01.164.00	02.01.164.00	02.01.164.00	02.01.164.00
33	Transformer, Step Down	---	R02.17.003.00	R02.17.002.00	R02.17.002.00	02.17.009.00	02.17.043.00	02.17.043.00	---	---
34	Terminal Block	02.15.021.00	R02.15.046.00	R02.15.046.00	02.15.021.00	R02.15.046.00	R02.15.035.00	R02.15.035.00	02.15.044.00	02.15.044.00
35	Indicator Light, Red	02.19.151.00	02.19.151.00	02.19.151.00	02.19.151.00	02.19.151.00	---	---	---	---
36	Indicator Light, Green	02.19.150.00	02.19.150.00	02.19.150.00	02.19.150.00	02.19.150.00	02.19.150.00	02.19.150.00	02.19.150.00	02.19.150.00
37A	Power Fuse Block Quantity	---	---	---	---	---	---	---	---	---
37B	Power Fuse Block Quantity	---	---	---	---	---	---	---	---	---
37C	Power Fuse Block Quantity	---	---	---	---	---	---	---	---	---
37D	Power Fuse Block Quantity	---	---	---	---	---	---	---	---	---
38A	Power Fuse (2 Pack) Quantity	---	---	---	---	---	---	---	---	---
38B	Power Fuse (2 Pack) Quantity	---	---	---	---	---	---	---	---	---
38C	Power Fuse (2 Pack) Quantity	---	---	---	---	---	---	---	---	---
39	Control Fuse Block	02.03.004.00	---	---	---	02.03.016.00	02.03.016.00	02.03.016.00	02.03.016.00	02.03.016.00
40	Control Fuse (2 Pack)	R02.03.001.02	R02.03.005.02	R02.03.005.02	R02.03.005.02	R02.03.021.02	R02.03.021.00	R02.03.021.02	R02.03.021.02	R02.03.021.00
41A	Tube, Inlet Water	---	---	---	---	---	---	---	---	---
41B	Tube, Inlet Water	03.30.007.00	03.30.007.00	03.30.007.00	03.30.007.00	03.30.007.00	03.30.007.00	03.30.007.00	03.30.007.00	03.30.007.00
42A	Nipple, Outlet Water	---	---	---	---	---	---	---	---	---
42B	Tube, Outlet Water	03.30.009.00	03.30.009.00	03.30.009.00	03.30.009.00	03.30.009.00	03.30.009.00	03.30.009.00	03.30.009.00	03.30.009.00
42B	Electrical Diagram	HC1-1183	HS1-3887	HS1-3887	HC1-2177	HS1-3887	HS1-4932	HS1-4932	HS1-4918	HS1-4918

Shaded area reflects export models only.

**PARTS SPECIFIC TO MODEL C-30**

ITEM	DESCRIPTION	208V		240V		480V		208V		240V		480V		208V		240V	
		Single Phase	Three Phase	Single Phase	Three Phase	Single Phase	Three Phase	Single Phase	Three Phase	Single Phase	Three Phase	Single Phase	Three Phase	Single Phase	Three Phase	Single Phase	Three Phase
28	Tank with Gaskets	R01.02.031.00	R01.02.031.00	R01.02.031.00	R01.02.031.00	---	---	R01.02.031.00	R01.02.031.00	R01.02.031.00	R01.02.031.00	---	---	R01.02.031.00	R01.02.031.00	R01.02.031.00	R01.02.031.00
29	Heating Element with Gasket Quantity	R01.04.500.00 6	R02.04.500.00 6	R02.04.501.00 6	R02.04.501.00 6	---	---	R02.04.502.00 6	R02.04.502.00 6	R01.02.500.00 6	R02.04.500.00 6	---	---	R02.04.500.00 6	R02.04.500.00 6	R02.04.501.00 6	R02.04.501.00 6
30	Contactor Quantity	02.01.015.00 2	02.01.015.00 2	02.01.015.00 2	02.01.015.00 2	---	---	02.01.015.00 2	02.01.015.00 2	02.01.016.00 2	02.01.016.00 2	---	---	02.01.016.00 2	02.01.016.00 2	02.01.016.00 2	02.01.016.00 2
31	Thermostat Control	02.16.003.00	02.16.003.00	02.16.003.00	02.16.003.00	---	---	02.16.003.00	02.16.003.00	02.16.003.00	02.16.003.00	---	---	02.16.003.00	02.16.003.00	02.16.003.00	02.16.003.00
32	Low Water Cut Off Board	02.01.006.00	02.01.006.00	02.01.006.00	02.01.006.00	---	---	02.01.006.00	02.01.006.00	02.01.006.00	02.01.006.00	---	---	02.01.001.00	02.01.001.00	02.01.001.00	02.01.001.00
33	Transformer, Step Down	02.17.004.00	02.17.004.00	02.17.004.00	02.17.004.00	---	---	02.17.004.00	02.17.004.00	02.17.004.00	02.17.004.00	---	---	---	---	---	---
34	Terminal Block	---	---	---	---	---	---	---	---	---	---	---	---	---	---	---	---
35	Indicator Light, Red	02.19.154.00	02.19.154.00	02.19.154.00	02.19.154.00	---	---	02.19.154.00	02.19.154.00	02.19.151.00	02.19.151.00	---	---	02.19.151.00	02.19.151.00	02.19.151.00	02.19.151.00
36	Indicator Light, Green	---	---	---	---	---	---	---	---	---	---	---	---	---	---	---	---
37A	Power Fuse Block Quantity	02.41.010.00 2	---	02.41.010.00 2	---	---	---	02.41.010.00 2	---	---	---	---	---	---	---	---	---
37B	Power Fuse Block Quantity	---	02.41.001.00 1	---	02.41.001.00 1	---	---	02.41.001.00 1	---	---	---	---	---	---	---	---	---
37C	Power Fuse Block Quantity	---	02.41.005.00 1	---	02.41.005.00 1	---	---	02.41.005.00 1	---	---	---	---	---	---	---	---	---
37D	Power Fuse Block Quantity	---	---	---	---	---	---	---	---	---	---	---	---	---	---	---	---
38A	Power Fuse (2 Pack) (60 Amp) Quantity	R02.03.033.02 3	R02.03.033.02 3	R02.03.033.02 3	R02.03.033.02 3	---	---	R02.03.033.02 3	R02.03.033.02 3	R02.03.033.02 3	R02.03.033.02 3	---	---	---	---	---	---
38B	Power Fuse (2 Pack) Quantity	---	---	---	---	---	---	---	---	---	---	---	---	---	---	---	---
38C	Power Fuse (2 Pack) Quantity	---	---	---	---	---	---	---	---	---	---	---	---	---	---	---	---
39	Control Fuse Block	02.03.022.00	02.03.022.00	02.03.022.00	02.03.022.00	---	---	02.03.022.00	02.03.022.00	02.03.004.00	02.03.004.00	---	---	02.03.004.00	02.03.004.00	02.03.004.00	02.03.004.00
40	Control Fuse (2 Pack)	R02.03.014.02	R02.03.014.02	R02.03.014.02	R02.03.014.02	---	---	R02.03.014.02	R02.03.014.02	R02.03.013.02	R02.03.013.02	---	---	R02.03.001.02	R02.03.001.02	R02.03.001.02	R02.03.001.02
41A	Tube, Inlet Water	---	---	---	---	---	---	---	---	---	---	---	---	---	---	---	---
41B	Tube, Inlet Water	03.30.007.00	03.30.007.00	03.30.007.00	03.30.007.00	---	---	03.30.007.00	03.30.007.00	03.30.007.00	03.30.007.00	---	---	03.30.007.00	03.30.007.00	03.30.007.00	03.30.007.00
42A	Nipple, Outlet Water	---	---	---	---	---	---	---	---	---	---	---	---	---	---	---	---
42B	Tube, Outlet Water	03.30.009.00	03.30.009.00	03.30.009.00	03.30.009.00	---	---	03.30.009.00	03.30.009.00	03.30.009.00	03.30.009.00	---	---	03.30.009.00	03.30.009.00	03.30.009.00	03.30.009.00
42B	Electrical Diagram	HC1-2471	HC1-2481	HC1-2471	HC1-2481	---	---	HC1-2471	HC1-2471	HC1-1183	HC1-1183	---	---	HC1-1183	HC1-1183	HC1-1183	HC1-1183

Shaded area reflects **export models only**.

**PARTS SPECIFIC TO MODEL C-30**

ITEM	DESCRIPTION	240V Three Phase	380V Three Phase	415V Three Phase	480V Three Phase	600V Three Phase	380-400V CE 3 Wire	400-415V CE 3 Wire	380-400V CE 4 Wire	400-415V CE 4 Wire
28	Tank with Gaskets	R01.02.031.00	R01.02.031.00	R01.02.031.00	R01.02.031.00	R01.02.031.00	R01.02.031.00	R01.02.031.00	R01.02.031.00	R01.02.031.00
29	Heating Element with Gasket Quantity	R02.04.501.00 6	R02.04.611.00 6	R02.04.501.00 6	R02.04.502.00 6	R02.04.510.00 6	R02.04.501.00 6	R02.04.501.00 6	R02.04.501.00 6	R02.04.501.00 6
30	Contactor Quantity	02.01.016.00 2	02.01.016.00 2	02.01.016.00 2	02.01.016.00 2	02.01.016.00 2	02.01.016.00 2	02.01.016.00 2	02.01.016.00 2	02.01.016.00 2
31	Thermostat Control	02.16.003.00	02.16.003.00	02.16.003.00	02.16.003.00	02.16.003.00	02.16.003.00	02.16.003.00	02.16.003.00	02.16.003.00
32	Low Water Cut Off Board	02.01.001.00	02.01.001.00	02.01.001.00	02.01.001.00	02.01.001.00	02.01.164.00	02.01.164.00	02.01.164.00	02.01.164.00
33	Transformer, Step Down	---	R02.17.003.00	R02.17.002.00	R02.17.002.00	02.17.009.00	02.17.043.00	02.17.043.00	---	---
34	Terminal Block	02.15.021.00	R02.15.046.00	R02.15.046.00	02.15.021.00	R02.15.046.00	R02.15.035.00	R02.15.035.00	02.15.044.00	02.15.044.00
35	Indicator Light, Red	02.19.151.00	02.19.151.00	02.19.151.00	02.19.151.00	02.19.151.00	---	---	---	---
36	Indicator Light, Green	02.19.150.00	02.19.150.00	02.19.150.00	02.19.150.00	02.19.150.00	02.19.150.00	02.19.150.00	02.19.150.00	02.19.150.00
37A	Power Fuse Block Quantity	---	---	---	---	---	---	---	---	---
37B	Power Fuse Block Quantity	---	---	---	---	---	---	---	---	---
37C	Power Fuse Block Quantity	---	---	---	---	---	---	---	---	---
37D	Power Fuse Block Quantity	---	---	---	---	---	---	---	---	---
38A	Power Fuse (2 Pack) Quantity	---	---	---	---	---	---	---	---	---
38B	Power Fuse (2 Pack) Quantity	---	---	---	---	---	---	---	---	---
38C	Power Fuse (2 Pack) Quantity	---	---	---	---	---	---	---	---	---
39	Control Fuse Block	02.03.004.00	---	---	---	02.03.016.00	02.03.016.00	02.03.016.00	---	---
40	Control Fuse (2 Pack)	R02.03.001.02	R02.03.005.02	R02.03.005.02	R02.03.005.02	R02.03.021.02	R02.03.021.00	R02.03.021.02	---	---
41A	Tube, Inlet Water	---	---	---	---	---	---	---	---	---
41B	Tube, Inlet Water	03.30.007.00	03.30.007.00	03.30.007.00	03.30.007.00	03.30.007.00	03.30.007.00	03.30.007.00	03.30.007.00	03.30.007.00
42A	Nipple, Outlet Water	---	---	---	---	---	---	---	---	---
42B	Tube, Outlet Water	03.30.009.00	03.30.009.00	03.30.009.00	03.30.009.00	03.30.009.00	03.30.009.00	03.30.009.00	03.30.009.00	03.30.009.00
42B	Electrical Diagram	HC1-1183	HS1-3887	HS1-3887	HC1-2177	HS1-3887	HS1-4932	HS1-4932	HS1-4918	HS1-4918

Shaded area reflects export models only.

**PARTS SPECIFIC TO MODEL C-36**

ITEM	DESCRIPTION	208V		240V		480V		208V		240V		480V	
		Single Phase	Three Phase	Single Phase	Three Phase	Single Phase	Three Phase	Single Phase	Three Phase	Single Phase	Three Phase	Single Phase	Three Phase
28	Tank with Gaskets	R01.02.031.00	R01.02.031.00	R01.02.031.00	R01.02.031.00	---	---	---	---	---	---	---	---
29	Heating Element with Gasket Quantity	R02.04.610.00 6	R02.04.610.00 6	R02.04.611.00 6	R02.04.611.00 6	---	---	---	---	---	---	---	---
30	Contactors Quantity	02.01.017.00 3	02.01.017.00 3	02.01.017.00 3	02.01.015.00 2	---	---	---	---	---	---	---	---
31	Thermostat Control	02.16.003.00	02.16.003.00	02.16.003.00	02.16.003.00	---	---	---	---	---	---	---	---
32	Low Water Cut Off Board	02.01.006.00	02.01.006.00	02.01.006.00	02.01.006.00	---	---	---	---	---	---	---	---
33	Transformer, Step Down	02.17.004.00	02.17.004.00	02.17.004.00	02.17.004.00	---	---	---	---	---	---	---	---
34	Terminal Block	02.15.007.00	---	02.15.007.00	---	---	---	---	---	---	---	---	---
35	Indicator Light, Red	02.19.154.00	02.19.154.00	02.19.154.00	02.19.154.00	---	---	---	---	---	---	---	---
36	Indicator Light, Green	---	---	---	---	---	---	---	---	---	---	---	---
37A	Power Fuse Block Quantity	02.41.010.00 4	---	02.41.010.00 4	---	---	---	---	---	---	---	---	---
37B	Power Fuse Block Quantity	---	02.41.015.00 3	---	---	---	---	---	---	---	---	---	---
37C	Power Fuse Block Quantity	---	---	---	02.41.001.00 1	---	---	---	---	---	---	---	---
37D	Power Fuse Block Quantity	---	---	---	02.41.005.00 1	---	---	---	---	---	---	---	---
38A	Power Fuse (2 Pack) (40 Amp) Quantity	R02.03.031.02 6	R02.03.031.02 6	R02.03.031.02 6	---	---	---	---	---	---	---	---	---
38B	Power Fuse (2 Pack) (60 Amp) Quantity	---	---	---	R02.03.033.02 3	---	---	---	---	---	---	---	---
38C	Power Fuse (2 Pack) Quantity	---	---	---	---	---	---	---	---	---	---	---	---
39	Control Fuse Block	02.03.022.00	02.03.022.00	02.03.022.00	02.03.022.00	---	---	---	---	---	---	---	---
40	Control Fuse (2 Pack)	R02.03.014.02	R02.03.014.02	R02.03.014.02	R02.03.014.02	---	---	---	---	---	---	---	---
41A	Tube, Inlet Water	---	---	---	---	---	---	---	---	---	---	---	---
41B	Tube, Inlet Water	03.30.007.00	03.30.007.00	03.30.007.00	03.30.007.00	---	---	---	---	---	---	---	---
42A	Nipple, Outlet Water	---	---	---	---	---	---	---	---	---	---	---	---
42B	Tube, Outlet Water	03.30.009.00	03.30.009.00	03.30.009.00	03.30.009.00	---	---	---	---	---	---	---	---
	Electrical Diagram	HC1-2477	HC1-2479	HC1-2477	HC1-2481	---	---	---	---	---	---	---	---

Shaded area reflects **export models only**.

**PARTS SPECIFIC TO MODEL C-36**

ITEM	DESCRIPTION	240V Three Phase	380V Three Phase	415V Three Phase	480V Three Phase	600V Three Phase	380-400V CE 3 Wire	400-415V CE 3 Wire	380-400V CE 4 Wire	400-415V CE 4 Wire
28	Tank with Gaskets	R01.02.031.00	R01.02.031.00	R01.02.031.00	R01.02.031.00	R01.02.031.00	---	---	---	---
29	Heating Element with Gasket Quantity	R02.04.611.00 6	R02.04.601.00 6	R02.04.611.00 6	R02.04.613.00 6	R02.04.612.00 6	---	---	---	---
30	Contactors Quantity	02.01.016.00 2	02.01.016.00 2	02.01.016.00 2	02.01.016.00 2	02.01.016.00 2	---	---	---	---
31	Thermostat Control	02.16.003.00	02.16.003.00	02.16.003.00	02.16.003.00	02.16.003.00	---	---	---	---
32	Low Water Cut Off Board	02.01.001.00	02.01.001.00	02.01.001.00	02.01.001.00	02.01.001.00	---	---	---	---
33	Transformer, Step Down	---	R02.17.003.00	R02.17.002.00	R02.17.002.00	02.17.009.00	---	---	---	---
34	Terminal Block	02.15.021.00	R02.15.046.00	R02.15.046.00	02.15.021.00	R02.15.046.00	---	---	---	---
35	Indicator Light, Red	02.19.151.00	02.19.151.00	02.19.151.00	02.19.151.00	02.19.151.00	---	---	---	---
36	Indicator Light, Green	02.19.150.00	02.19.150.00	02.19.150.00	02.19.150.00	02.19.150.00	---	---	---	---
37A	Power Fuse Block Quantity	---	---	---	---	---	---	---	---	---
37B	Power Fuse Block Quantity	---	---	---	---	---	---	---	---	---
37C	Power Fuse Block Quantity	---	---	---	---	---	---	---	---	---
37D	Power Fuse Block Quantity	---	---	---	---	---	---	---	---	---
38A	Power Fuse (2 Pack) Quantity	---	---	---	---	---	---	---	---	---
38B	Power Fuse (2 Pack) Quantity	---	---	---	---	---	---	---	---	---
38C	Power Fuse (2 Pack) Quantity	---	---	---	---	---	---	---	---	---
39	Control Fuse Block	02.03.004.00	---	---	---	02.03.016.00	---	---	---	---
40	Control Fuse (2 Pack)	R02.03.001.02	R02.03.005.02	R02.03.005.02	R02.03.005.02	R02.03.021.02	---	---	---	---
41A	Tube, Inlet Water	---	---	---	---	---	---	---	---	---
41B	Tube, Inlet Water	03.30.007.00	03.30.007.00	03.30.007.00	03.30.007.00	03.30.007.00	---	---	---	---
42A	Nipple, Outlet Water	---	---	---	---	---	---	---	---	---
42B	Tube, Outlet Water	03.30.009.00	03.30.009.00	03.30.009.00	03.30.009.00	03.30.009.00	---	---	---	---
	Electrical Diagram	HC1-1183	HS1-3887	HS1-3887	HC1-2177	HS1-3887	---	---	---	---

Shaded area reflects **export models only**.

**PARTS SPECIFIC TO MODEL C-39**

ITEM	DESCRIPTION	208V Single Phase	208V Three Phase	240V Single Phase	240V Three Phase	480V Single Phase	480V Three Phase	208V Single Phase	208V Three Phase	240V Single Phase
28	Tank with Gaskets	R01.02.031.00	R01.02.031.00	R01.02.031.00	R01.02.031.00		R01.02.031.00		R01.02.031.00	
29	Heating Element with Gasket Quantity	R01.04.650.00 6	R02.04.650.00 6	R02.04.653.00 6	R02.04.653.00 6		R02.04.655.00 6		R02.04.650.00 6	
30	Contactor Quantity	02.01.017.00 3	02.01.017.00 3	02.01.017.00 3	02.01.015.00 2		02.01.015.00 2		02.01.018.00 3	
31	Thermostat Control	02.16.003.00	02.16.003.00	02.16.003.00	02.16.003.00		02.16.003.00		02.16.003.00	
32	Low Water Cut Off Board	02.01.006.00	02.01.006.00	02.01.006.00	02.01.006.00		02.01.006.00		02.01.001.00	
33	Transformer, Step Down	02.17.004.00	02.17.004.00	02.17.004.00	02.17.004.00		02.17.005.00			
34	Terminal Block	02.15.007.00		02.15.007.00			R02.15.046.00		02.15.021.00	
35	Indicator Light, Red	02.19.154.00	02.19.154.00	02.19.154.00	02.19.154.00		02.19.154.00		02.19.151.00	
36	Indicator Light, Green								02.19.150.00	
37A	Power Fuse Block Quantity	02.41.010.00 4		02.41.010.00 4						
37B	Power Fuse Block Quantity		02.41.015.00 3							
37C	Power Fuse Block Quantity				02.41.001.00 1					
37D	Power Fuse Block Quantity				02.41.005.00 1					
38A	Power Fuse (2 Pack) (40 Amp) Quantity	R02.03.031.02 6	R02.03.031.02 6	R02.03.031.02 6						
38B	Power Fuse (2 Pack) (60 Amp) Quantity				R02.03.033.02 3					
38C	Power Fuse (2 Pack) Quantity									
39	Control Fuse Block	02.03.002.00	02.03.022.00	02.03.022.00	02.03.022.00		02.03.023.00		02.03.004.00	
40	Control Fuse (2 Pack)	R02.03.014.02	R02.03.014.02	R02.03.014.02	R02.03.014.02		R02.03.013.02		R02.03.001.02	
41A	Tube, Inlet Water									
41B	Tube, Inlet Water	03.30.007.00	03.30.007.00	03.30.007.00	03.30.007.00		03.30.007.00		03.30.007.00	
42A	Nipple, Outlet Water									
42B	Tube, Outlet Water	03.30.009.00	03.30.009.00	03.30.009.00	03.30.009.00		03.30.009.00		03.30.009.00	
	Electrical Diagram	HC1-2477	HC1-2479	HC1-2477	HC1-2481		HC1-2475		HC1-1181	

Shaded area reflects **export models only**.



**PARTS SPECIFIC TO MODEL C-39**

ITEM	DESCRIPTION	240V Three Phase	380V Three Phase	415V Three Phase	480V Three Phase	600V Three Phase	380-400V CE 3 Wire	400-415V CE 3 Wire	380-400V CE 4 Wire	400-415V CE 4 Wire
28	Tank with Gaskets	R01.02.031.00	R01.02.031.00	R01.02.031.00	R01.02.031.00	R01.02.031.00	---	---	---	---
29	Heating Element with Gasket Quantity	R02.04.653.00 6	R02.04.651.00 6	R02.04.653.00 6	R02.04.655.00 6	R02.04.654.00 6	---	---	---	---
30	Contactor Quantity	02.01.018.00 3	02.01.016.00 2	02.01.016.00 2	02.01.016.00 2	02.01.016.00 2	---	---	---	---
31	Thermostat Control	02.16.003.00	02.16.003.00	02.16.003.00	02.16.003.00	02.16.003.00	---	---	---	---
32	Low Water Cut Off Board	02.01.001.00	02.01.001.00	02.01.001.00	02.01.001.00	02.01.001.00	---	---	---	---
33	Transformer, Step Down	---	R02.17.003.00	R02.17.002.00	R02.17.002.00	R02.17.009.00	---	---	---	---
34	Terminal Block	02.15.021.00	R02.15.046.00	R02.15.046.00	02.15.021.00	R02.15.046.00	---	---	---	---
35	Indicator Light, Red	02.19.151.00	02.19.151.00	02.19.151.00	02.19.151.00	02.19.151.00	---	---	---	---
36	Indicator Light, Green	02.19.150.00	02.19.150.00	02.19.150.00	02.19.150.00	02.19.150.00	---	---	---	---
37A	Power Fuse Block Quantity	---	---	---	---	---	---	---	---	---
37B	Power Fuse Block Quantity	---	---	---	---	---	---	---	---	---
37C	Power Fuse Block Quantity	---	---	---	---	---	---	---	---	---
37D	Power Fuse Block Quantity	---	---	---	---	---	---	---	---	---
38A	Power Fuse (2 Pack) Quantity	---	---	---	---	---	---	---	---	---
38B	Power Fuse (2 Pack) Quantity	---	---	---	---	---	---	---	---	---
38C	Power Fuse (2 Pack) Quantity	---	---	---	---	---	---	---	---	---
39	Control Fuse Block	02.03.004.00	---	---	---	02.03.016.00	---	---	---	---
40	Control Fuse (2 Pack)	R02.03.001.02	R02.03.005.02	R02.03.005.02	R02.03.005.02	R02.03.021.02	---	---	---	---
41A	Tube, Inlet Water	---	---	---	---	---	---	---	---	---
41B	Tube, Inlet Water	03.30.007.00	03.30.007.00	03.30.007.00	03.30.007.00	03.30.007.00	---	---	---	---
42A	Nipple, Outlet Water	---	---	---	---	---	---	---	---	---
42B	Tube, Outlet Water	03.30.009.00	03.30.009.00	03.30.009.00	03.30.009.00	03.30.009.00	---	---	---	---
	Electrical Diagram	HC1-1183	HS1-3887	HS1-3887	HC1-2177	HS1-3887	---	---	---	---

Shaded area reflects export models only.

**PARTS SPECIFIC TO MODEL C-45**

ITEM	DESCRIPTION	208V		240V		480V		208V		240V		480V	
		Single Phase	Three Phase	Single Phase	Three Phase	Single Phase	Three Phase	Single Phase	Three Phase	Single Phase	Three Phase	Single Phase	Three Phase
28	Tank with Gaskets	---	R01.02.031.00	R01.02.031.00	R01.02.031.00	---	R01.02.031.00	---	R01.02.031.00	---	R01.02.031.00	---	---
29	Heating Element with Gasket Quantity	---	R02.04.700.00 6	R02.04.701.00 6	R02.04.701.00 6	---	R02.04.703.00 6	---	R02.04.703.00 6	---	R02.04.700.00 6	---	---
30	Contactor Quantity	---	02.01.017.00 3	02.01.017.00 3	02.01.017.00 3	---	02.01.015.00 2	---	02.01.015.00 2	---	02.01.018.00 3	---	---
31	Thermostat Control	---	02.16.003.00	02.16.003.00	02.16.003.00	---	02.16.003.00	---	02.16.003.00	---	02.16.003.00	---	---
32	Low Water Cut Off Board	---	02.01.006.00	02.01.006.00	02.01.006.00	---	02.01.006.00	---	02.01.006.00	---	02.01.001.00	---	---
33	Transformer, Step Down	---	02.17.004.00	02.17.004.00	02.17.004.00	---	02.17.005.00	---	02.17.005.00	---	---	---	---
34	Terminal Block	---	---	02.15.007.00	---	---	02.15.021.00	---	02.15.021.00	---	02.15.021.00	---	---
35	Indicator Light, Red	---	02.19.154.00	02.19.154.00	02.19.154.00	---	02.19.154.00	---	02.19.154.00	---	02.19.151.00	---	---
36	Indicator Light, Green	---	---	---	---	---	---	---	---	---	02.19.150.00	---	---
37A	Power Fuse Block Quantity	---	02.41.015.00 3	---	02.41.015.00 3	---	---	---	---	---	---	---	---
37B	Power Fuse Block Quantity	---	---	02.41.010.00 4	---	---	---	---	---	---	---	---	---
37C	Power Fuse Block Quantity	---	---	---	---	---	02.41.030.00 2	---	02.41.030.00 2	---	---	---	---
37D	Power Fuse Block Quantity	---	---	---	---	---	---	---	---	---	---	---	---
38A	Power Fuse (2 Pack) (50 Amp) Quantity	---	R02.03.032.02 6	---	---	---	---	---	---	---	---	---	---
38B	Power Fuse (2 Pack) (40 Amp) Quantity	---	---	R02.03.031.02 6	R02.03.031.02 6	---	---	---	---	---	---	---	---
38C	Power Fuse (2 Pack) (40 Amp) Quantity	---	---	---	---	---	R02.03.011.02 3	---	R02.03.011.02 3	---	---	---	---
39	Control Fuse Block	---	02.03.022.00	02.03.022.00	02.03.022.00	---	02.03.023.00	---	02.03.023.00	---	02.03.004.00	---	---
40	Control Fuse (2 Pack)	---	R02.03.014.02	R02.03.014.02	R02.03.014.02	---	R02.03.013.02	---	R02.03.013.02	---	R02.03.001.02	---	---
41A	Tube, Inlet Water	---	---	---	---	---	---	---	---	---	---	---	---
41B	Tube, Inlet Water	---	03.30.007.00	03.30.007.00	03.30.007.00	---	03.30.007.00	---	03.30.007.00	---	03.30.007.00	---	---
42A	Nipple, Outlet Water	---	---	---	---	---	---	---	---	---	---	---	---
42B	Tube, Outlet Water	---	03.30.009.00	03.30.009.00	03.30.009.00	---	03.30.009.00	---	03.30.009.00	---	03.30.009.00	---	---
42B	Electrical Diagram	---	HC1-2479	HC1-2477	HC1-2479	---	HC1-2481	---	HC1-2481	---	HC1-1181	---	---

Shaded area reflects export models only.

**PARTS SPECIFIC TO MODEL C-45**

ITEM	DESCRIPTION	240V Three Phase	380V Three Phase	415V Three Phase	480V Three Phase	600V Three Phase	380-400V CE 3 Wire	400-415V CE 3 Wire	380-400V CE 4 Wire	400-415V CE 4 Wire
28	Tank with Gaskets	R01.02.031.00	R01.02.031.00	R01.02.031.00	R01.02.031.00	R01.02.031.00	---	---	---	---
29	Heating Element with Gasket Quantity	R02.04.701.00 6	R02.04.711.00 6	R02.04.701.00 6	R02.04.703.00 6	R02.04.704.00 6	---	---	---	---
30	Contactors Quantity	02.01.018.00 3	02.01.016.00 2	02.01.016.00 2	02.01.016.00 2	02.01.016.00 2	---	---	---	---
31	Thermostat Control	02.16.003.00	02.16.003.00	02.16.003.00	02.16.003.00	02.16.003.00	---	---	---	---
32	Low Water Cut Off Board	02.01.001.00	02.01.001.00	02.01.001.00	02.01.001.00	02.01.001.00	---	---	---	---
33	Transformer, Step Down	---	R02.17.003.00	R02.17.002.00	R02.17.002.00	02.17.009.00	---	---	---	---
34	Terminal Block	02.15.021.00	02.15.021.00	02.15.021.00	02.15.021.00	R02.15.046.00	---	---	---	---
35	Indicator Light, Red	02.19.151.00	02.19.151.00	02.19.151.00	02.19.151.00	02.19.151.00	---	---	---	---
36	Indicator Light, Green	02.19.150.00	02.19.150.00	02.19.150.00	02.19.150.00	02.19.150.00	---	---	---	---
37A	Power Fuse Block Quantity	---	---	---	---	---	---	---	---	---
37B	Power Fuse Block Quantity	---	---	---	---	---	---	---	---	---
37C	Power Fuse Block Quantity	---	---	---	---	---	---	---	---	---
37D	Power Fuse Block Quantity	---	---	---	---	---	---	---	---	---
38A	Power Fuse (2 Pack) Quantity	---	---	---	---	---	---	---	---	---
38B	Power Fuse (2 Pack) Quantity	---	---	---	---	---	---	---	---	---
38C	Power Fuse (2 Pack) Quantity	---	---	---	---	---	---	---	---	---
39	Control Fuse Block	02.03.004.00	---	---	---	02.03.016.00	---	---	---	---
40	Control Fuse (2 Pack)	R02.03.001.02	R02.03.005.02	R02.03.005.02	R02.03.005.02	R02.03.021.02	---	---	---	---
41A	Tube, Inlet Water	---	---	---	---	---	---	---	---	---
41B	Tube, Inlet Water	03.30.007.00	03.30.007.00	03.30.007.00	03.30.007.00	03.30.007.00	---	---	---	---
42A	Nipple, Outlet Water	---	---	---	---	---	---	---	---	---
42B	Tube, Outlet Water	03.30.009.00	03.30.009.00	03.30.009.00	03.30.009.00	03.30.009.00	---	---	---	---
	Electrical Diagram	HC1-1181	HS1-3887	HS1-3887	HC1-2177	HS1-3887	---	---	---	---

Shaded area reflects export models only.

**PARTS SPECIFIC TO MODEL C-54**

ITEM	DESCRIPTION	208V		240V		480V		208V		240V		480V	
		Single Phase	Three Phase	Single Phase	Three Phase	Single Phase	Three Phase	Single Phase	Three Phase	Single Phase	Three Phase	Single Phase	Three Phase
28	Tank with Gaskets	---	R01.02.031.00	---	R01.02.031.00	---	R01.02.031.00	---	R01.02.031.00	---	R01.02.031.00	---	R01.02.031.00
29	Heating Element with Gasket Quantity	---	R02.04.710.00 6	---	R02.04.711.00 6	---	R02.04.713.00 6	---	R02.04.710.00 6	---	R02.04.710.00 6	---	R02.04.710.00 6
30	Contactors Quantity	---	02.01.017.00 2	---	02.01.017.00 3	---	02.01.015.00 2	---	02.01.017.00 2	---	02.01.015.00 2	---	02.01.018.00 3
31	Thermostat Control	---	02.16.003.00	---	02.16.003.00	---	02.16.003.00	---	02.16.003.00	---	02.16.003.00	---	02.16.003.00
32	Low Water Cut Off Board	---	02.01.006.00	---	02.01.006.00	---	02.01.006.00	---	02.01.006.00	---	02.01.006.00	---	02.01.001.00
33	Transformer, Step Down	---	02.17.004.00	---	02.17.004.00	---	02.17.005.00	---	02.17.004.00	---	02.17.005.00	---	---
34	Terminal Block	---	---	---	---	---	02.15.021.00	---	02.15.021.00	---	02.15.021.00	---	02.15.021.00
35	Indicator Light, Red	---	02.19.154.00	---	02.19.154.00	---	02.19.154.00	---	02.19.154.00	---	02.19.154.00	---	02.19.151.00
36	Indicator Light, Green	---	---	---	---	---	---	---	---	---	---	---	02.19.150.00
37A	Power Fuse Block Quantity	---	02.41.020.00 1	---	02.41.020.00 1	---	02.41.020.00	---	02.41.020.00	---	02.41.020.00	---	---
37B	Power Fuse Block Quantity	---	02.41.022.00 2	---	02.41.022.00 2	---	02.41.022.00	---	02.41.022.00	---	02.41.022.00	---	---
37C	Power Fuse Block Quantity	---	---	---	---	---	02.41.030.00	---	---	---	02.41.030.00	---	---
37D	Power Fuse Block Quantity	---	---	---	---	---	---	---	---	---	---	---	---
38A	Power Fuse (2 Pack) (60 Amp) Quantity	---	R02.03.033.02 6	---	R02.03.033.02 6	---	---	---	R02.03.033.02 6	---	---	---	---
38B	Power Fuse (2 Pack) (50 Amp) Quantity	---	---	---	---	---	---	---	---	---	R02.03.012.02 3	---	---
38C	Power Fuse (2 Pack) Quantity	---	---	---	---	---	---	---	---	---	---	---	---
39	Control Fuse Block	---	02.03.022.00	---	02.03.022.00	---	02.03.023.00	---	02.03.022.00	---	02.03.023.00	---	02.03.004.00
40	Control Fuse (2 Pack)	---	R02.03.014.02	---	R02.03.014.02	---	R02.03.013.02	---	R02.03.014.02	---	R02.03.013.02	---	R02.03.001.02
41A	Tube, Inlet Water	---	---	---	---	---	---	---	---	---	---	---	---
41B	Tube, Inlet Water	---	03.30.007.00	---	03.30.007.00	---	03.30.007.00	---	03.30.007.00	---	03.30.007.00	---	03.30.007.00
42A	Nipple, Outlet Water	---	---	---	---	---	---	---	---	---	---	---	---
42B	Tube, Outlet Water Electrical Diagram	---	03.30.009.00 HC1-2479	---	03.30.009.00 HC1-2479	---	03.30.009.00 HC1-2479	---	03.30.009.00 HC1-2479	---	03.30.009.00 HC1-2479	---	03.30.009.00 HC1-1181

Shaded area reflects export models only.

**PARTS SPECIFIC TO MODEL C-54**

ITEM	DESCRIPTION	240V Three Phase	380V Three Phase	415V Three Phase	480V Three Phase	600V Three Phase	380-400V CE 3 Wire	400-415V CE 3 Wire	380-400V CE 4 Wire	400-415V CE 4 Wire
28	Tank with Gaskets	R01.02.031.00	R01.02.031.00	R01.02.031.00	R01.02.031.00	R01.02.031.00	---	---	---	---
29	Heating Element with Gasket Quantity	R02.04.711.00 6	R02.04.721.00 6	R02.04.711.00 6	R02.04.713.00 6	R02.04.714.00 6	---	---	---	---
30	Contactor Quantity	02.01.018.00 3	02.01.016.00 2	02.01.016.00 2	02.01.016.00 2	02.01.016.00 1	---	---	---	---
31	Thermostat Control	02.16.003.00	02.16.003.00	02.16.003.00	02.16.003.00	02.16.003.00	---	---	---	---
32	Low Water Cut Off Board	02.01.001.00	02.01.001.00	02.01.001.00	02.01.001.00	02.01.001.00	---	---	---	---
33	Transformer, Step Down	---	R02.17.003.00	R02.17.002.00	R02.17.002.00	02.17.009.00	---	---	---	---
34	Terminal Block	02.15.021.00	02.15.021.00	02.15.021.00	02.15.021.00	02.15.021.00	---	---	---	---
35	Indicator Light, Red	02.19.151.00	02.19.151.00	02.19.151.00	02.19.151.00	02.19.151.00	---	---	---	---
36	Indicator Light, Green	02.19.150.00	02.19.150.00	02.19.150.00	02.19.150.00	02.19.150.00	---	---	---	---
37A	Power Fuse Block Quantity	---	---	---	---	---	---	---	---	---
37B	Power Fuse Block Quantity	---	---	---	---	---	---	---	---	---
37C	Power Fuse Block Quantity	---	---	---	---	---	---	---	---	---
37D	Power Fuse Block Quantity	---	---	---	---	---	---	---	---	---
38A	Power Fuse (2 Pack) Quantity	---	---	---	---	---	---	---	---	---
38B	Power Fuse (2 Pack) Quantity	---	---	---	---	---	---	---	---	---
38C	Power Fuse (2 Pack) Quantity	---	---	---	---	---	---	---	---	---
39	Control Fuse Block	02.03.004.00	---	---	---	02.03.016.00	---	---	---	---
40	Control Fuse (2 Pack)	R02.03.001.02	R02.03.005.02	R02.03.005.02	R02.03.005.02	R02.03.021.02	---	---	---	---
41A	Tube, Inlet Water	---	---	---	---	---	---	---	---	---
41B	Tube, Inlet Water	03.30.007.00	03.30.007.00	03.30.007.00	03.30.007.00	03.30.007.00	---	---	---	---
42A	Nipple, Outlet Water	---	---	---	---	---	---	---	---	---
42B	Tube, Outlet Water	03.30.009.00	03.30.009.00	03.30.009.00	03.30.009.00	03.30.009.00	---	---	---	---
	Electrical Diagram	HC1-1181	HS1-3887	HS1-3887	HC1-2177	HS1-3887	---	---	---	---

Shaded area reflects export models only.

**PARTS SPECIFIC TO MODEL C-58**

ITEM	DESCRIPTION	208V		240V		480V		208V		240V		480V	
		Single Phase	Three Phase	Single Phase	Three Phase	Single Phase	Three Phase	Single Phase	Three Phase	Single Phase	Three Phase	Single Phase	Three Phase
28	Tank with Gaskets	---	R01.02.031.00	---	R01.02.031.00	---	R01.02.031.00	---	R01.02.031.00	---	R01.02.031.00	---	R01.02.031.00
29	Heating Element with Gasket Quantity	---	R02.04.720.00 6	---	R02.04.721.00 6	---	R02.04.724.00 6	---	R02.04.720.00 6	---	R02.04.720.00 6	---	R02.04.720.00 6
30	Contactors Quantity	---	02.01.017.00 3	---	02.01.017.00 3	---	02.01.015.00 2	---	02.01.017.00 3	---	02.01.015.00 2	---	02.01.018.00 3
31	Thermostat Control	---	02.16.003.00	---	02.16.003.00	---	02.16.003.00	---	02.16.003.00	---	02.16.003.00	---	02.16.003.00
32	Low Water Cut Off Board	---	02.01.006.00	---	02.01.006.00	---	02.01.006.00	---	02.01.006.00	---	02.01.006.00	---	02.01.001.00
33	Transformer, Step Down	---	02.17.004.00	---	02.17.004.00	---	02.17.005.00	---	02.17.004.00	---	02.17.005.00	---	---
34	Terminal Block	---	---	---	---	---	02.15.021.00	---	---	---	02.15.021.00	---	02.15.021.00
35	Indicator Light, Red	---	02.19.154.00	---	02.19.154.00	---	02.19.154.00	---	02.19.154.00	---	02.19.154.00	---	02.19.151.00
36	Indicator Light, Green	---	---	---	---	---	---	---	---	---	---	---	02.19.150.00
37A	Power Fuse Block Quantity	---	02.41.020.00 1	---	02.41.020.00 1	---	---	---	02.41.020.00 1	---	---	---	---
37B	Power Fuse Block Quantity	---	02.41.022.00 2	---	02.41.022.00 2	---	---	---	02.41.022.00 2	---	---	02.41.030.00 2	---
37C	Power Fuse Block Quantity	---	---	---	---	---	---	---	---	---	---	---	---
37D	Power Fuse Block Quantity	---	---	---	---	---	---	---	---	---	---	---	---
38A	Power Fuse (2 Pack) (60 Amp) Quantity	---	R02.03.033.02 6	---	---	---	---	---	R02.03.033.02 6	---	---	---	---
38B	Power Fuse (2 Pack) (50 Amp) Quantity	---	---	---	---	---	---	---	---	---	---	---	---
38C	Power Fuse (2 Pack) (50 Amp) Quantity	---	---	---	---	---	---	---	R02.03.012.02 3	---	---	---	---
39	Control Fuse Block	---	02.03.022.00	---	02.03.022.00	---	02.03.023.00	---	02.03.022.00	---	02.03.023.00	---	02.03.004.00
40	Control Fuse (2 Pack)	---	R02.03.014.02	---	R02.03.014.02	---	R02.03.013.02	---	R02.03.014.02	---	R02.03.013.02	---	R02.03.001.02
41A	Tube, Inlet Water	---	---	---	---	---	---	---	---	---	---	---	---
41B	Tube, Inlet Water	---	03.30.007.00	---	03.30.007.00	---	03.30.007.00	---	03.30.007.00	---	03.30.007.00	---	03.30.007.00
42A	Nipple, Outlet Water	---	---	---	---	---	---	---	---	---	---	---	---
42B	Tube, Outlet Water Electrical Diagram	---	03.30.009.00 HC1-2479	---	03.30.009.00 HC1-2479	---	03.30.009.00 HC1-2481	---	03.30.009.00 HC1-2479	---	03.30.009.00 HC1-2481	---	03.30.009.00 HC1-1181

Shaded area reflects export models only.

**PARTS SPECIFIC TO MODEL C-58**

ITEM	DESCRIPTION	240V Three Phase	380V Three Phase	415V Three Phase	480V Three Phase	600V Three Phase	380-400V CE 3 Wire	400-415V CE 3 Wire	380-400V CE 4 Wire	400-415V CE 4 Wire
28	Tank with Gaskets	R01.02.031.00	R01.02.031.00	R01.02.031.00	R01.02.031.00	R01.02.031.00	---	---	---	---
29	Heating Element with Gasket Quantity 6	R02.04.721.00 6	R02.04.723.00 6	R02.04.721.00 6	R02.04.724.00 6	R02.04.725.00 6	---	---	---	---
30	Contactors Quantity 3	02.01.018.00 3	02.01.016.00 2	02.01.016.00 2	02.01.016.00 2	02.01.016.00 1	---	---	---	---
31	Thermostat Control	02.16.003.00	02.16.003.00	02.16.003.00	02.16.003.00	02.16.003.00	---	---	---	---
32	Low Water Cut Off Board	02.01.001.00	02.01.001.00	02.01.001.00	02.01.001.00	02.01.001.00	---	---	---	---
33	Transformer, Step Down	---	R02.17.003.00	R02.17.002.00	R02.17.002.00	02.17.009.00	---	---	---	---
34	Terminal Block	02.15.021.00	02.15.021.00	02.15.021.00	02.15.021.00	02.15.021.00	---	---	---	---
35	Indicator Light, Red	02.19.151.00	02.19.151.00	02.19.151.00	02.19.151.00	02.19.151.00	---	---	---	---
36	Indicator Light, Green	02.19.150.00	02.19.150.00	02.19.150.00	02.19.150.00	02.19.150.00	---	---	---	---
37A	Power Fuse Block Quantity	---	---	---	---	---	---	---	---	---
37B	Power Fuse Block Quantity	---	---	---	---	---	---	---	---	---
37C	Power Fuse Block Quantity	---	---	---	---	---	---	---	---	---
37D	Power Fuse Block Quantity	---	---	---	---	---	---	---	---	---
38A	Power Fuse (2 Pack) Quantity	---	---	---	---	---	---	---	---	---
38B	Power Fuse (2 Pack) Quantity	---	---	---	---	---	---	---	---	---
38C	Power Fuse (2 Pack) Quantity	---	---	---	---	---	---	---	---	---
39	Control Fuse Block	02.03.004.00	---	---	---	02.03.016.00	---	---	---	---
40	Control Fuse (2 Pack)	R02.03.001.02	R02.03.005.02	R02.03.005.02	R02.03.005.02	R02.03.021.02	---	---	---	---
41A	Tube, Inlet Water	---	---	---	---	---	---	---	---	---
41B	Tube, Inlet Water	03.30.007.00	03.30.007.00	03.30.007.00	03.30.007.00	03.30.007.00	---	---	---	---
42A	Nipple, Outlet Water	---	---	---	---	---	---	---	---	---
42B	Tube, Outlet Water	03.30.009.00	03.30.009.00	03.30.009.00	03.30.009.00	03.30.009.00	---	---	---	---
	Electrical Diagram	HC1-1181	HS1-3887	HS1-3887	HC1-2177	HS1-3887	---	---	---	---

Shaded area reflects export models only.

## HATCO AUTHORIZED PARTS DISTRIBUTORS

### **ALABAMA**

Jones McLeod Appl. Svc.  
Birmingham 205-251-0159

### **ARIZONA**

Auth. Comm. Food Equip.  
Phoenix 602-234-2443  
Byassee Equipment Co.  
Phoenix 602-252-0402

### **CALIFORNIA**

Industrial Electric  
Huntington Beach 714-379-7100  
Chapman Appl. Service  
San Diego 619-298-7106  
P & D Appliance  
S. San Francisco 650-635-1900

### **COLORADO**

Hawkins Commercial Appliance  
Englewood 303-781-5548

### **DELAWARE**

Food Equipment Service  
Wilmington 302-996-9363

### **FLORIDA**

Whaley Foodservice Repair  
Jacksonville 904-725-7800  
Nass Service Co., Inc.  
Orlando 407-425-2681  
B.G.S.I.  
Pompano Beach 954-971-0456  
Comm. Appliance Service  
Tampa 813-663-0313

### **GEORGIA**

Southeastern Rest. Svc.  
Norcross 770-446-6177

### **HAWAII**

Burney's Comm. Service, Inc.  
Honolulu 808-848-1466  
Food Equip Parts & Service  
Honolulu 808-847-4871

### **ILLINOIS**

Parts Town  
Lombard 708-865-7278  
Eichenauer Elec. Service  
Decatur 217-429-4229  
Midwest Elec. Appl. Service  
Elmhurst 630-279-8000  
Cone's Repair Service  
Moline 309-797-5323

### **INDIANA**

GCS Service  
Indianapolis 317-545-9655

### **IOWA**

Electric Motor Service Co.  
Davenport 319-323-1823

### **KENTUCKY**

GCS Service  
Louisville 502-367-1788

### **LOUISIANA**

Chandlers Parts & Service  
Baton Rouge 225-272-6620  
Bana Comm. Parts, Inc.  
Shreveport 318-631-6550

### **MARYLAND**

Electric Motor Service  
Baltimore 410-467-8080  
GCS Service  
Silver Spring 301-585-7550

### **MASSACHUSETTS**

Ace Service Co., Inc.  
Needham 781-449-4220

### **MICHIGAN**

Commercial Kitchen Service  
Bay City 517-893-4561  
Bildons Appliance Service  
Detroit 248-478-3320

Midwest Food Equip. Service  
Grandville 616-261-2000

### **MINNESOTA**

GCS Service  
Minneapolis 612-546-4221

### **MISSOURI**

GCS Service  
Kansas City 816-920-5999  
Commercial Kitchen Services  
St. Louis 314-890-0700

Kaemmerlen Parts & Service  
St. Louis 314-535-2222

### **NEBRASKA**

Anderson Electric  
Omaha 402-341-1414

### **NEVADA**

Burney's Commercial  
Las Vegas 702-736-0006  
Hi. Tech Commercial Service  
N. Las Vegas 702-649-4616

### **NEW JERSEY**

Jay Hill Repair  
Fairfield 973-575-9145  
Service Plus  
Flanders 973-691-6300

### **NEW YORK**

Acme American Repairs, Inc.  
Brooklyn 718-456-6544  
Alpro Service Co.  
Brooklyn 718-386-2515

### **NEW YORK (continued)**

Appliance Installation  
Buffalo 716-884-7425  
Northern Parts Dist.  
Plattsburgh 518-563-3200  
J. B. Brady, Inc.  
Syracuse 315-422-9271

### **NORTH CAROLINA**

Authorized Appliance  
Charlotte 704-377-4501

### **OHIO**

Akron/Canton Comm. Svc. Inc.  
Akron 330-753-6635  
Certified Service Center  
Cincinnati 513-772-6600

GCS Service  
Columbus 614-476-3225

Electrical Appl. Repair Service  
Independence 216-459-8700

E. A. Wichman Co.  
Toledo 419-385-9121

### **OKLAHOMA**

Hagar Rest. Service, Inc.  
Oklahoma City 405-235-2184  
Krueger, Inc.  
Oklahoma City 405-528-8883

### **OREGON**

Bressie Electric Co.  
Portland 503-231-7171

Ron's Service, Inc.  
Portland 503-624-0890

### **PENNSYLVANIA**

Authorized Factory Service  
Coraopolis 412-262-2330  
FAST Comm. Appl. Service  
Philadelphia 215-288-4800

GCS Service  
Pittsburgh 412-787-1970

K & D Service Co.  
Harrisburg 717-236-9039

Elmer Schultz Services  
Philadelphia 215-627-5401

Electric Repair Co.  
Reading 610-376-5444

### **RHODE ISLAND**

Marshall Electric Co.  
Providence 401-331-1163

### **SOUTH CAROLINA**

Whaley Foodservice Repair  
W. Columbia 803-791-4420

### **TENNESSEE**

Camp Electric  
Memphis 901-527-7543

### **TEXAS**

Stove Parts Supply  
Fort Worth 817-831-0381

Armstrong Repair Service  
Houston 713-666-7100

Commercial Kitchen Repair Co.  
San Antonio 210-735-2811

San Antonio Rest. Equip.  
San Antonio 210-532-1660

### **UTAH**

GCS Service  
Salt Lake City 801-487-3653

### **VIRGINIA**

Daubers  
Norfolk 757-855-4097

Daubers  
Springfield 703-866-3600

### **WASHINGTON**

Restaurant Appl. Service  
Seattle 206-524-8200

### **WISCONSIN**

A.S.C., Inc.  
Madison 608-246-3160

A.S.C., Inc.  
Milwaukee 414-543-6460

## **CANADA**

### **BRITISH COLUMBIA**

Key Food Equipment Service  
Vancouver 604-433-4484

### **ONTARIO**

R.G. Henderson Ltd.  
Toronto 416-422-5580

Choquette CKS  
Ottawa 613-739-8458

### **QUÉBEC**

Choquette CKS  
Montreal 514-722-2000

Choquette CKS  
Québec City 418-681-3944

## HATCO CORPORATION

P.O. Box 340500, Milwaukee, WI 53234-0500 U.S.A.

(800) 558-0607 (414) 671-6350

Parts & Service Fax (800) 690-2966 Int'l. Fax (414) 671-3976

www.hatcocorp.com