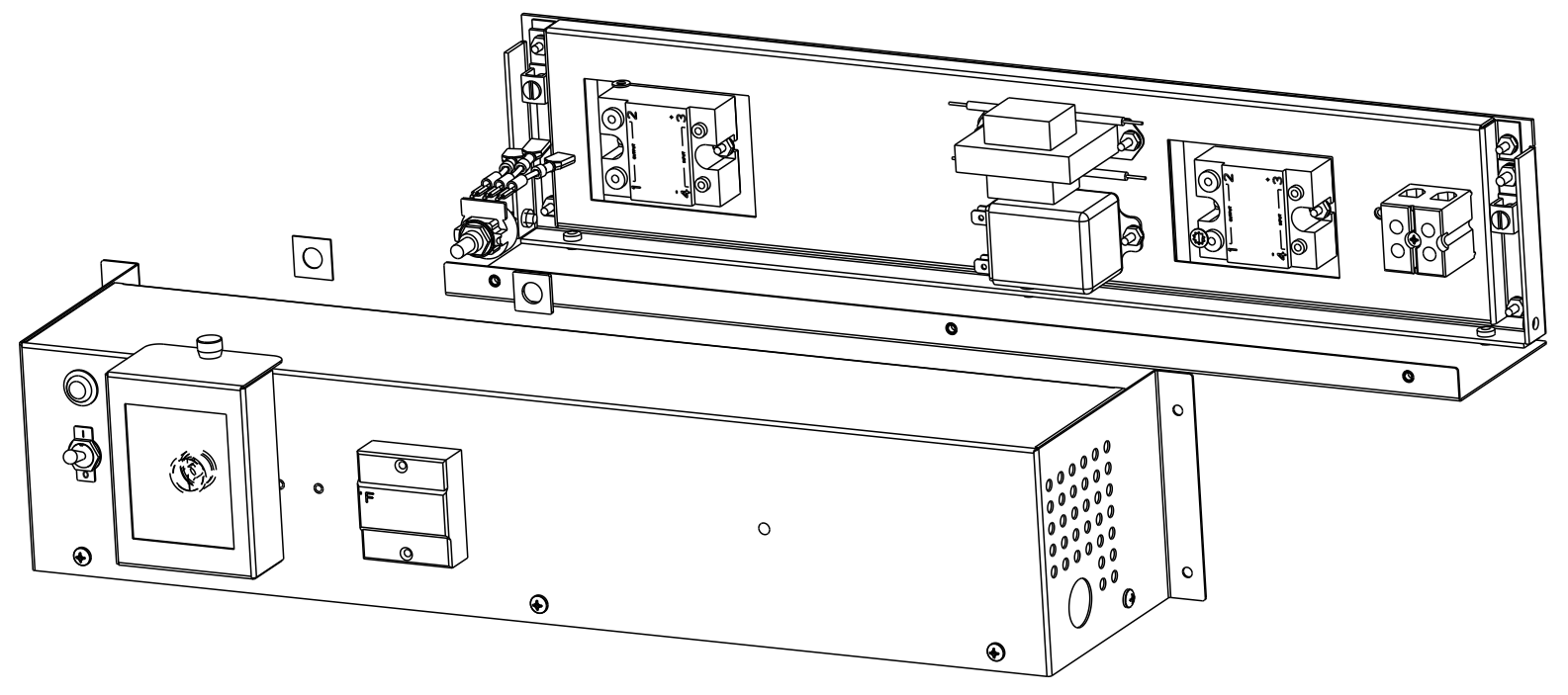
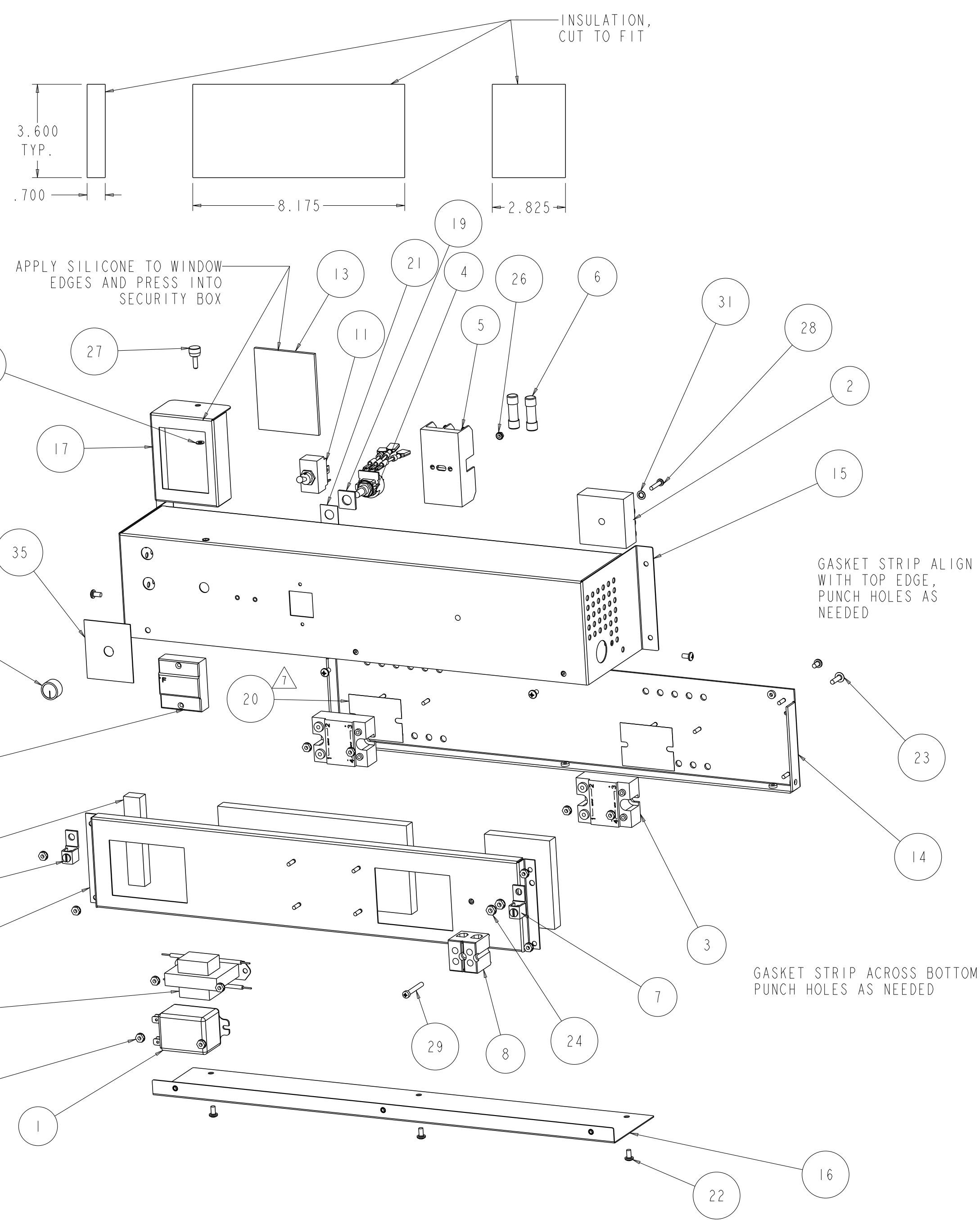


ITEM	DESCRIPTION	PART NUMBER	QTY
1	REL CUBE 208/240AC DPDT 35A.	02.01.098.00	1
2	6A 208-240V SOLID STATE INFINITE	02.01.102.00	1
3	SSR,25A,120-240 AC CONTROL	02.01.417.00	2
4	POTENTIOMETER, 2M OHM, 14" LEADS	02.01.489.00	1
5	FUSE BLOCK, 15A, 480V, 2P	02.03.022.00	1
6	FUSE 15 AMP, CLASS G	02.03.052.00	2
7	LUG #4-14 W/LEG	02.14.058.00	2
8	B-SERIES TERMINAL BLOCKS	02.15.045.00	1
9	TID S.S. LED FAH,NO PROBE	02.16.187.00	1
10	TRANS 24V.SEC.,230V.,PRI.,10VA	02.17.023.00	1
11	SWITCH,20A. 125/250V DPST TOG	02.19.008A.00	1
12	PILOT LIGHT RED 250V	02.19.151.00	1
13	WINDOW, SECURITY, 3.3 X 2.6 X .125	04.12.450.00	1
14	BACK PANEL,CONTROL BOX,GRAH-114T-CB	04.37.196.00	1
15	FRONT PANEL,W/MOUNTS,CONTROL BOX,GRAH-114T-CB	04.37.197.00	1
16	BOTTOM COVER, CONTROL BOX,GRAH-114T-CB	04.37.198.00	1
17	COVER,SECURITY WITH WINDOW,GRAH-114T-CB	04.37.199.00	1
18	MOUNT, CONTROL PANEL SPACER,GRAH-114T-CB	04.37.200.00	1
19	WASHER, ANTI-ROTATION	04.37.222.00	1
20	THERMAL PAD,SSR,CRYDOM	05.01.089.00	2
21	TAPE, ADHESIVE, .75" X .75"	05.01.092.00	1
22	SC PLT 8-32 X 5/16 PH PN	05.04.005.00	11
23	SC PLT 8-32X5/8 PH TR TCS TP T	05.04.011.00	1
24	NUT,PLT,8-32 KEPS NUT	05.04.023.00	2
25	NUT,PLT,6-32 KEPS NUT	05.04.057.00	12
26	NUT,PLT,4-40 KEPS NUT	05.04.168.00	1
27	8-32 THUMB SCREW,S.S.,1/2" LONG	05.04.305.00	1
28	SC PLT 6-32X3/4 PH PN 23 ZNC	05.04.358.00	1
29	SC PLT 8-32X1-1/4 PHIL FIL TCS-23	05.04.439.00	1
30	INSULATION,RIGID 1/2 X 5 X 19	05.05.115.00	1
31	WASH PLT #8 INTERNAL SHAKEPROOF	05.11.028.00	1
32	WASHER NYLON .156 ID .313 OD .031 THK	05.11.049.00	1
33	KNOB,ELECTRONIC INFINITE	05.30.042.00	1
34	TOGGLE SWITCH PLATE,1-0	07.01.058.00	1
35	SWITCH PLATE,ELEC. INFINITE	07.01.200.00	1

5 6
ENTIRE RMB
Part number - R00.02.0105.00

6 6
 LABEL NEAR
 FUSE BLOCK



RELEASE AND REVISION HISTORY				CK:
RV	DESCRIPTION	DATE	ENG	RB
1	RELEASED ECO.#24779	7-16-14	MEG	WEM
5	02.01.428.00 WAS 02.01.108.00,ECO.#24997	10-02-14	MEG	WEM
6	02.01.489.00 WAS 02.01.428.00. ADD 02.37.222.00 AND 05.01.092.00,ECO#27024	1-11-17	RAC	WEM
7	THERM PAD CHG TO 05.01.089 ECO.#29093	12-7-17	JJS	JMN
-	-	-	-	-
-	-	-	-	-
-	-	-	-	-

UNLESS OTHERWISE SPECIFIED DIMS ARE IN INCHES TOL ON ANGLE ±2.0° 2 PL ±0.02 3 PL ±0.016 HOLE SIZES: +.005/- .002			
HATCO CORP., MILWAUKEE, WI			
DESCRIPTION CONTROL BOX ASSEMBLY, GRAH-114T-CB			
PART NUMBER	DRAWING NUMBER	REV	
N/A	10-03-1249	7	
Released	SCALE:0.300	PROJ: 715302	SHEET 1 OF 1