

# EZ26 SERIES

## THRU-THE-WALL/BUILT-IN AIR CONDITIONERS

### PRODUCT INFORMATION

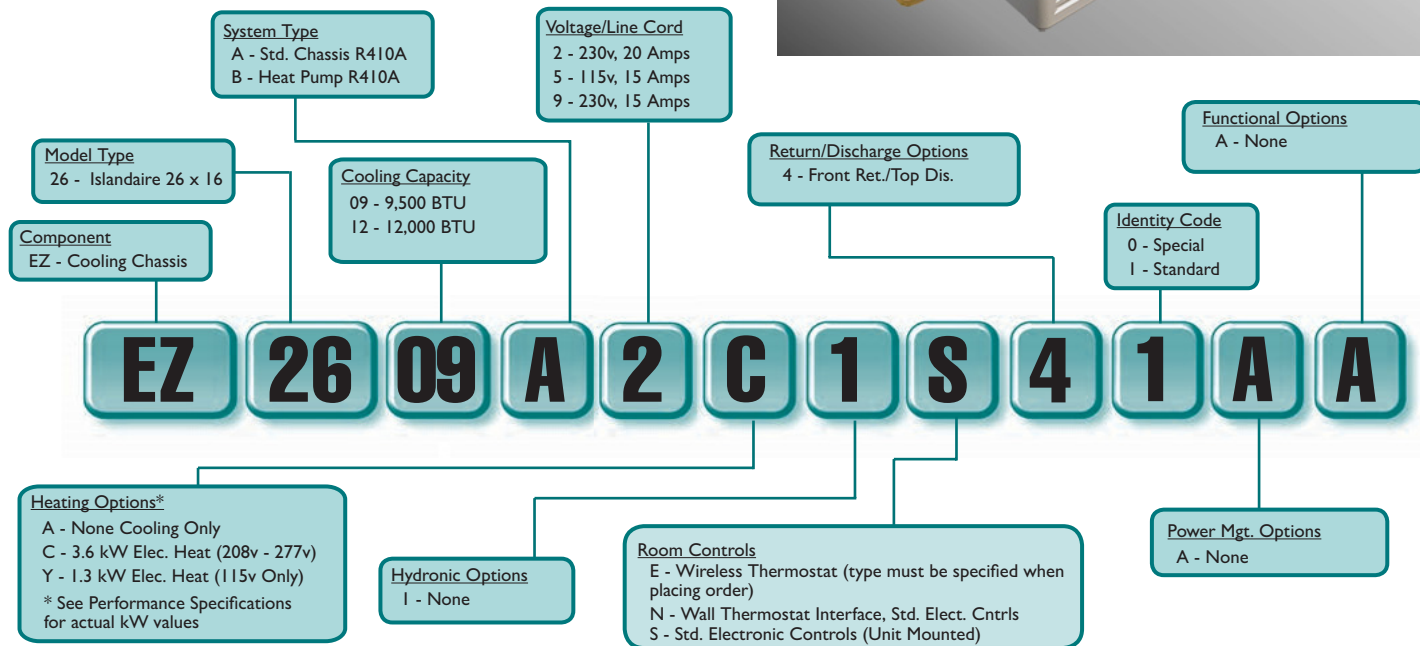


The EZ26 Series units are designed and manufactured for new construction or the replacement of 26" packaged terminal air conditioning units in an existing building. The product is designed for individually-zoned, comfort-controlled heating and cooling. We offer our chassis to operate in cooling only, cooling with electric heat, and cooling with heat pump with backup electric heat. The design standards, heavy duty construction and the focus on indoor noise reduction has established our unit as the premier unit of the future. Replacement for the Amana PB Series 26" unit, the GE AJ Series 26" unit, the Friedrich 27" Wallmaster unit\* and the Fedders 27" unit\*.

(\* requires kit #4090846)

#### STANDARD FEATURES:

- Quiet Operation
- Energy Saver Mode (Auto Fan)
- Two Motor Design
- Electronic Touch Pad Controls
- Hand Held Controller
- Fan Cycle Switch
- Four Way Adjustable Discharge
- Slide Out Chassis
- Sleeve Dim: 26" w x 15 5/8" h x 16 7/8" d
- Fits Standard 26" wide Wall Sleeve
- Remote Thermostat Capable (Standard)



Specifications are subject to change due to ongoing product development.

6140385 Rev. 11/12/21

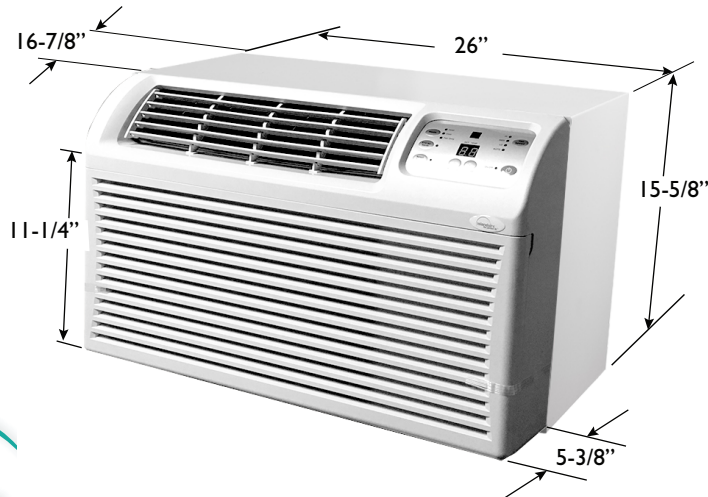
# EZ26 SERIES UNIT SPECIFICATIONS

	COOLING ONLY MODELS				ELECTRIC HEAT MODELS		HEAT PUMP MODELS		
MODEL	EZ2609A5A1	EZ2609A9A1	EZ2612A5A1	EZ2612A9A1	EZ2609A2C1	EZ2612A2C1	EZ2609B5Y1	EZ2609B2C1	EZ2612B2C1
VOLTAGE	115	230/208	115	230/208	230/208	230/208	115	230/208	230/208
CURRENT (MAX.)	11.50	6.90	14.77	8.10	15.20	15.20	11.45	15.20	15.20
COOLING RATINGS									
BTUH	9000	9400/9300	11,800	11,800/11,600	9400/9300	11,800/11,600	9000	9300/9100	11,700/11,500
WATTS	920	940/910	1200	1185/1145	940/910	1185/1145	920	940/910	1185/1145
E.E.R.	9.8	10.0/10.2	10.6	10.0/10.1	10.0/10.2	10.0/10.1	9.8	9.9/10.0	10.0/10.1
HEAT PUMP RATINGS									
BTUH	N/A	N/A	N/A	N/A	N/A	N/A	8500	8800/8600	11,400/11,200
WATTS	N/A	N/A	N/A	N/A	N/A	N/A	805	830/810	1160/1140
C.O.P.	N/A	N/A	N/A	N/A	N/A	N/A	3.1	3.1/3.1	2.9/2.9
ELECTRIC HEAT RATINGS									
WATTS	N/A	N/A	N/A	N/A	3400	3400	1200	3400	3400
AIR FLOW									
CFM (INDOOR, HI COOL)	290	270	290	270	270	270	270	270	270
NOISE LEVEL									
INDOOR, dBA (HI/MED/LO)	59/57/55	60/58/55	59/57/55	60/58/55	60/58/55	60/58/55	59/57/55	60/58/55	60/58/55
OUTDOOR, dBA, COOLING	66.4/60.85	67/64	66.4/60.85	67/64	67/64	67/64	66.4/60.85	67/64	67/64
ELECTRICAL DATA									
POWER CORD TYPE	Parallel	Tandem	Parallel	Tandem	Perpendicular	Perpendicular	Parallel	Perpendicular	Perpendicular
POWER CORD LENGTH (FT.)	5.5 (LCDI)	5.5 (LCDI)	5.5 (LCDI)	5.5 (LCDI)	5.5 (LCDI)	5.5 (LCDI)	5.5 (LCDI)	5.5 (LCDI)	5.5 (LCDI)
POWER CORD RATING (AMPS)	15	15	15	15	20	20	15	20	20
PHYSICAL SPECIFICATIONS									
OVERALL DIMENSIONS	26" WIDE X 15 5/8" HIGH X 22 1/4" DEEP								
WALL CUT-OUT DIMENSIONS	26 3/16" WIDE X 15 13/16" HIGH X MAXIMUM WALL THICKNESS = 16 3/8"								
APPROX. SHIPPING WT. (LBS.)	91	91	94	91	93	94	94	94	97
WARRANTY	ONE YEAR PARTS & LABOR WARRANTY ON ENTIRE UNIT. FIVE YEAR LIMITED SEALED SYSTEM ONLY.								


Heating Option	Voltage (V)	Wattage	BTU/h	Amps (2)
3	208	2,780	9,500	13.37
	230	3,400	11,600	14.78
	277	3,600	12,300	13.00
Y	115	1,300	4,400	11.30

(1) Voltage is Single Phase, Alternating Current and R.M.S.  
 (2) Amp values are for heater element only.

Where applicable, cooling capacities are specified at conditions of 95 °F DB/75 °F WB outdoor and 80 °F DB/67 °F WB indoor and heating capacities are specified at conditions of 47 °F DB/43 °F WB outdoor and 70 °F DB/60 °F WB indoor in accordance with AHRI 310/380 and CSA C744 standards. Wattage, Amperage, EER, and COP listings include compressor, evaporator motor and condenser fan motor. The above ratings are a typical heat pump style unit.




Parallel




15 Amps  
125 Volts

Tandem



15 Amps  
250 Volts

Perpendicular



20 Amps  
250 Volts



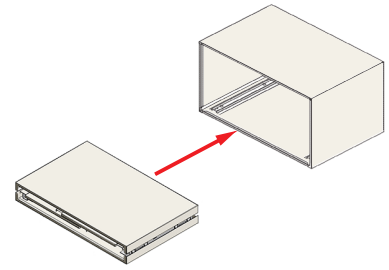
500 Middle Country Road, St. James, NY 11780 • 1-800-886-2759  
 e-mail: sales@islandaire.com • www.islandaire.com  
 Ph: 631-471-2900 • Fax: 631-471-2913

# EZ26 SERIES

# UNIT ACCESSORIES

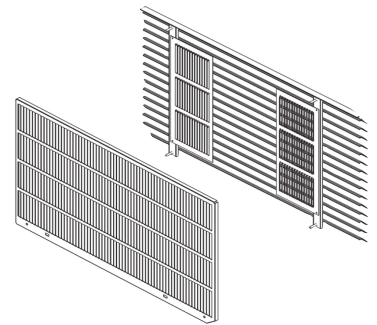
## WALL SLEEVE

PART NUMBER	DESCRIPTION	APPROX WT.	DIMENSIONS		
			DEPTH	WIDTH	HEIGHT
Consult Factory	Custom Wall Sleeves available for all building types/wall thicknesses	-	-	-	-
2401253-00	EZ26 Wall Sleeve Assembly, Break Down	32 lbs.	16.75"	26.00"	16.75"
4090846	EZ26 Sleeve Adapter Kit, converts Friedrich WSC and Fedders BSAODC 27" wide sleeves to use EZ26 unit	7 lbs.	1.036"	27.25"	16.885"
4091603	26" to 27" Sleeve-to-Sleeve Adapter	7 lbs.	1.036"	27.25"	16.885"



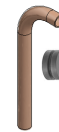
## LOUVERS

PART NUMBER	DESCRIPTION	APPROX WT.	DIMENSIONS		
			DEPTH	WIDTH	HEIGHT
6070308	EZ26 Stamped Exterior Louver	2 lbs.	0.394"	25.709"	15.354"
6070309	EZ26 Architectural Exterior Louver	5 lbs.	1.149"	25.687"	15.354"
6070310	EZ26 Insulated Metal Panel	5 lbs.	0.188"	25.375"	14.579"



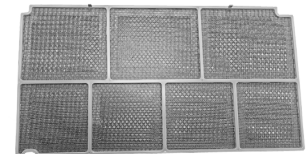
## MISCELLANEOUS

PART NUMBER	DESCRIPTION	APPROX WT.	DIMENSIONS		
			DEPTH	WIDTH	HEIGHT
4091136	EZ26 Drain Kit for Wall Sleeve 2400610	1 lb.	N/A	N/A	N/A
6130158	EZ26 Replacement Front Panel (Plastic)	5 lbs.	4.750"	26.00"	15.625"
6041146	EZ26 Replacement Hand Held Remote Control	1 lb.	N/A	N/A	N/A



## FILTERS

PART NUMBER	DESCRIPTION	APPROX WT.	DIMENSIONS		
			DEPTH	WIDTH	HEIGHT
6080115	EZ26 Plastic Filter, Standard	2 lbs.	0.250"	17.00"	10.00"



## THERMOSTATS

PART NUMBER	DESCRIPTION	APPROX WT.	FEATURES		
			CONNECTION	STAGE	DISPLAY
6041206	Islandaire Non-Programmable, Two Fan Speed	1.0 lbs.	Wireless	Single	Horizontal
6041210	Islandaire Programmable ,Two Fan Speed	1.0 lbs.	Wireless	Single	Horizontal
6041228	Islandaire Programmable (7 Day/5-1-1 Day/ Non-Programmable), Two Fan Speed	1.0 lbs.	Wired	Single	Horizontal



Ask your salesman about  
our DR. PTAC option!\*



\*100% conditioned  
fresh air

**NEW!**

**Vertical Unit Available**

For New Construction and  
as Replacement for  
GE AZ Vertical, Friedrich Vert-I-Pak  
and First Company SPX



500 Middle Country Road, St. James, NY 11780 • 1-800-886-2759  
e-mail: [sales@islandaire.com](mailto:sales@islandaire.com) • [www.islandaire.com](http://www.islandaire.com)  
Ph: 631-471-2900 • Fax: 631-471-2913



Locally Represented By:

