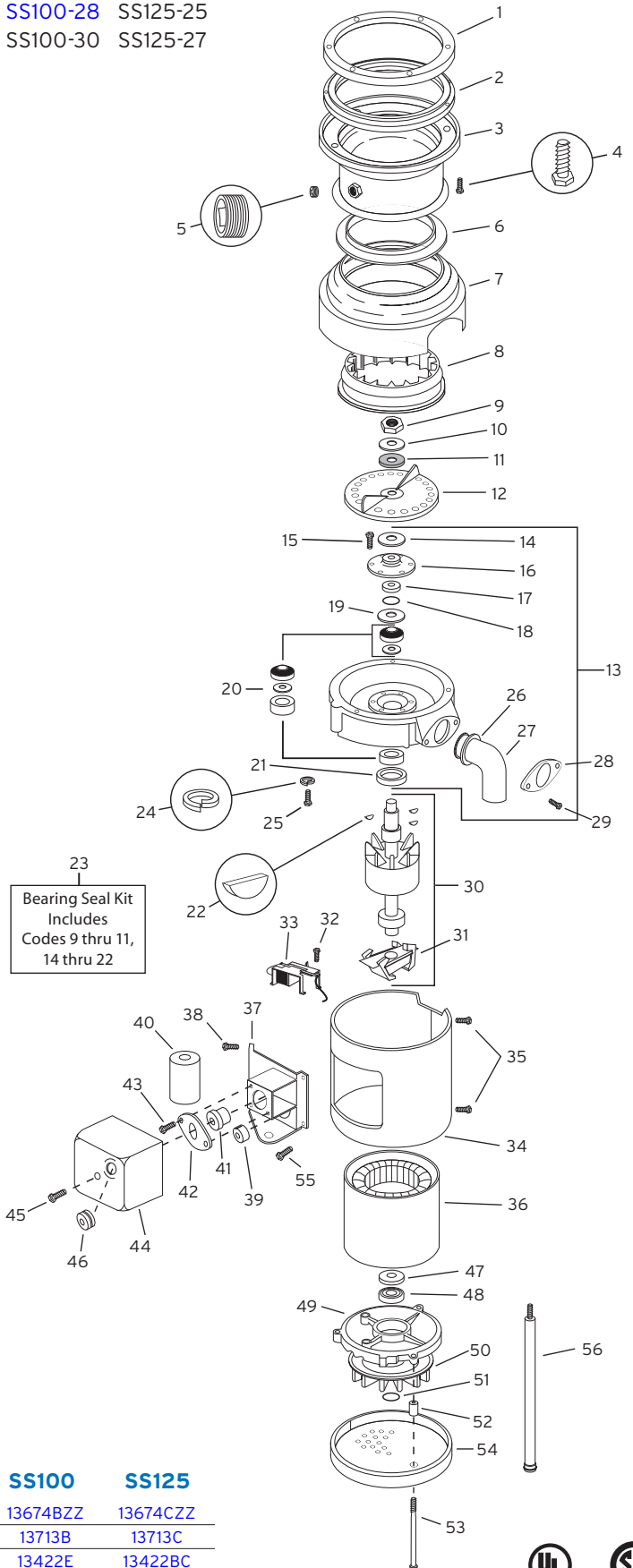


UL Approved  
CSA Approved

SS50-26 SS75-27 **SS100-28** SS125-25  
SS50-28 SS75-29 SS100-30 SS125-27

CODE #	DESCRIPTION	QTY	PART NUMBER
1	Mounting Flange	1	11004
2	Mounting Gasket	1	11016
3	Upper Body Assy	1	11020A
4	Screw (1/4-20 x 3/4)	6	1491
5	Pipe Plug	1	11227
6	Shredder Gasket	1	11006
7	Body & Cover Assy	1	12442ZZ
8	Stationary Shredder	1	14664
9	Nut	1	11260
10	Washer	1	12445
11	Fiber Washer	1	12142
12	Rotating Shredder Assy	1	12944ZZ
13	Upper End Bell Assy (14-22)	1	13722
14	Shield	1	12936
15	Screw (8-18 x 1/2)	6	1269
16	Seal Assy	1	12934A
17	Spacer Sleeve	1	12935
18	O-Ring	1	12860
19	Slinger	1	12319
20	Upper Bearing Assy	1	12610
21	Water & Oil Seal	1	12326
22	Woodruff Key	3	11322
23	Bearing Seal Kit (9-11 & 14-22)	1	13080
24	Lock Washer	3	11444
25	Screw (1/4-20 x 1)	3	3135
26	Tailpipe Gasket	1	1470
27	Tailpipe	1	8219
28	Tailpipe Flange	1	1461
29	Screw (1/4-20 x 1/2)	2	1468
30	Rotor & Shaft Assy (Inc 31 & 47)	1	See Chart "A"
31	Centrifugal Actuator	1	13708
32	Screw (8-32 x 1/2)	2	8221
33	Start Switch	1	13707
34	Trim Band	1	12370ZZ
35	Screw (8-32 x 1/2)	2	1836A
36	Stator Assy	1	See Chart "A"
37	Bracket Assy	1	12433KZZ
38	Screw (8-18 x 1/4)	4	11448
39	Bushing	1	12384
40	Capacitor	1	11868
41	Overload Protector	1	See Chart "A"
42	Overload Clamp	1	12378
43	Screw (8-32 x 1/2)	1	8221
44	Terminal Box Assy (Inc 46)	1	13396ZZ
45	Screw (8-32 x 1-1/4)	1	12381
46	Overload Grommet	1	12383
47	Lower Bearing	1	13709
48	Pre-Load Spring	1	13678
49	Lower End Frame	1	See Chart "A"
50	Fan	1	13676ZZ
51	Retaining Ring	1	13677ZZ
52	Tube Spacer	1	12490
53	Thru Bolt	3	11940A
54	Bottom Cover	1	12396
55	Ground Screw	1	2466A
56	Foot Tube Assy (Optional)	2	11757B



CODE #	DESCRIPTION	QTY	SS50	SS75	SS100	SS125
30	Rotor & Shaft Assy	1	13674ZZ	13674AZZ	13674BZZ	13674CZZ
36	Stator Assy	1	13713	13713A	13713B	13713C
41	Overload Protector	1	13422AK	13422J	13422E	13422BC
49	Lower End Frame	1	13710	13710	13710	14709

(A)