



# Commercial Juicer #8 Information

## Suggested Price List

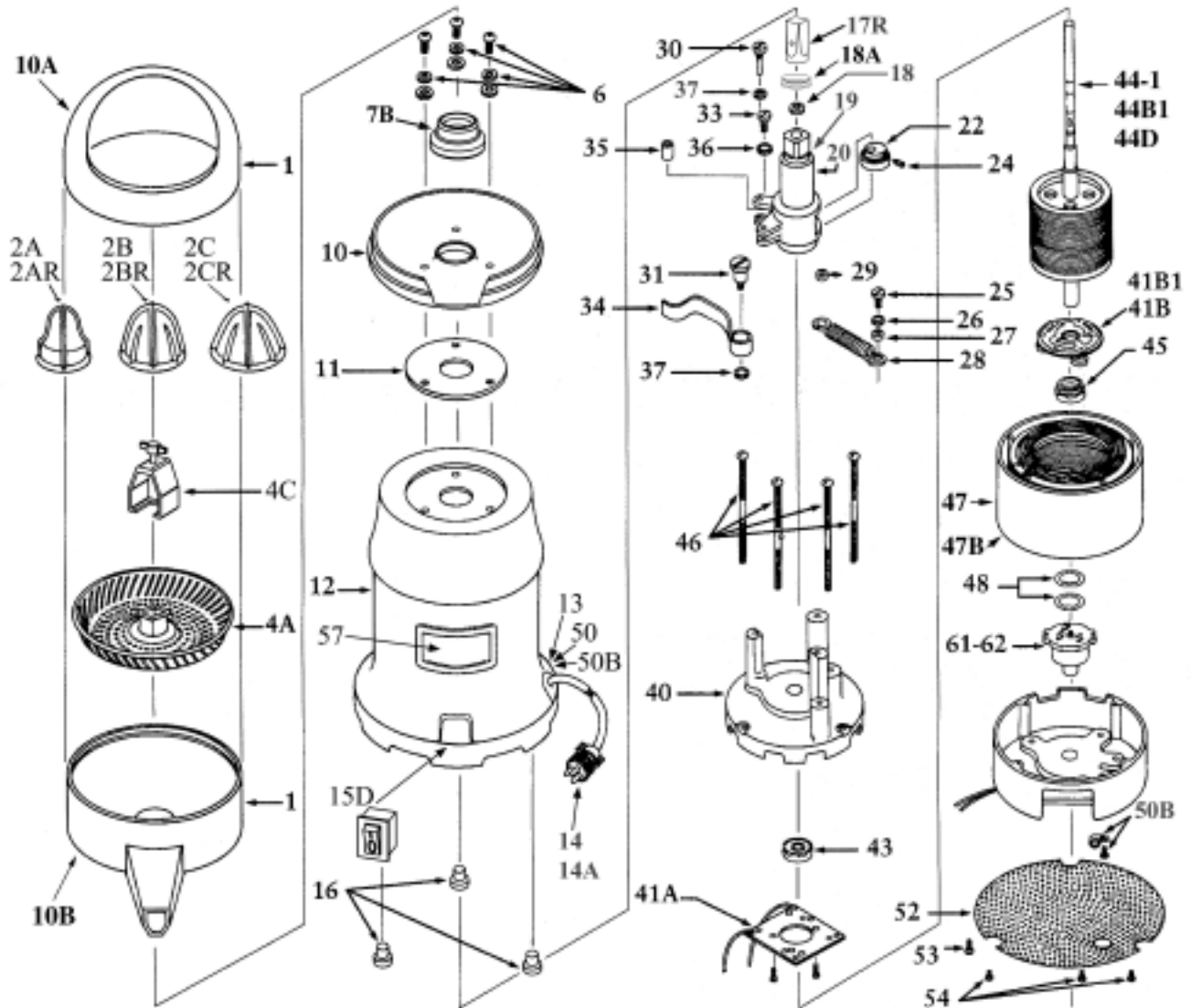
Effective Date March 15, 2008

### Complete Juicer Units

Model #	Description	Units Master Ctn.	Weight Per Master Ctn.	Price
J-1	Type 8 AC 115/60 with oscillating strainer	1	37 lbs.	\$595.00
J-2	Type 8 AC 230/50 with oscillating strainer	1	37 lbs.	\$610.00
J-4	Type 8 AC 230/60 with oscillating strainer	1	37 lbs.	\$610.00
J-5	Type 8 AC 115/60 with oscillating strainer (for use in Canada)	1	37 lbs.	\$595.00

### Individual Parts – Optional

Part Number	Description	Price	Part Number	Description	Price	Part Number	Description	Price
1.	Plastic Bowl Assembly incl. dome (10A), spout (10B) & bowl support (10)	\$64.00	15E.	Connectors for 14 & 15D (set of 4) (not illustrated)	\$ 6.00	41A.	Stationary Motor Switch - Howell Motor	44.00
2.	Extracting Bulb Set w/metal insert (Only use with 17 or 17C)	64.00	16.	Rubber Feet (set of 3)	4.00	41B.	Centrifugal Motor Switch 115V - Howell Motor	\$ 32.00
	A. Lemon/Lime fits #8 model	24.00	17.	Shaft Tip w/Pin (not illustrated) (only use with 2A, 2B, and/or 2C)	34.00	41B1.	Centrifugal Motor Switch 230V - Howell Motor	32.00
	B. Orange fits #7 & #8 models	24.00	17C.	Shaft Tip w/Pin (graduated tip) (not illustrated) (only use with 2A, 2B, and/or 2C)	34.00	43.	Motor Bearing Top or Bottom - Howell	20.00
	C. Grapefruit fits #7 & #8 models	24.00	17R.	Shaft Tip w/Pin (flat tip) (only use with 2AR, 2BR, and/or 2CR)	34.00	44-1.	Rotor w/shaft Howell Motor 115/60	185.00
2R.	Extracting Bulb Set w/o metal insert (Only use with 17R)	64.00	18.	Eccentric housing Gasket (incl'd w/#20)	2.00	44B1.	Rotor w/shaft Howell Motor 230/50	180.00
	AR. Lemon/Lime	24.00	18A.	Shaft Tip Gasket (fits 17C)	6.00	44D.	Rotor w/shaft Howell Motor 230/60	200.00
	BR. Orange	24.00	19.	Brass Tube	4.00	45.	Motor Bearing Top or Bottom - Ohio	30.00
	CR. Grapefruit	24.00	20-7.	Eccentric Housing w/Bearings, Gasket & Brass Tube #7 Juicer	76.00	46.	Motor Screws (set of 4)	8.00
3.	Lever Lock & Screws for Strainer (for #7 juicer - not illustrated)	12.00	20-8.	Eccentric Housing w/Bearings, Gasket & Brass Tube #8 Juicer	85.00	47.	Stator (winding) - Howell Motor 115/60	180.00
4.	Strainer w/Lever Lock & Screws (for #7 juicer - not illustrated)	60.00	20-8C.	Eccentric Mechanism #8 Juicer	105.00	47B.	Stator (winding) - Howell Motor 230/50	245.00
4A.	Strainer for #8 juicer	60.00	22.	Ecc. Hub w/Bearing & Screw	24.00	48.	Tension Washers - Howell Motor (set of 2)	8.00
4C.	Strainer Puller for #8 juicer	20.00	24.	Ecc. Hub Hex Screw 1/4-20x1/2	2.00	50.	Electric Cord Strain Relief for J-2	2.50
6.	Bowl Support Screws, Spacers, Washers (set of 3)	12.00	25.	Spring Screw to Motor Mount 10-32	2.00	50B.	Electric Cord Strain Relief for J-1, J-4 & J-5	2.00
7.	Umbrella Ring w/Set Screw & Gasket (not illustrated)	16.00	26.	Lock Washers incl. 36 (2) & 37 (3)	2.00	52.	Perforated Base Plate	20.00
7B.	Umbrella Seal (only for use on grooved eccentric housings, replaces 7, 8 & 9)	6.00	27.	Bronze Bushing Coil Spring to Motor Mount 3/64 x 3/8 x 1/4	2.00	53.	Ground Screw w/Lock Washer for J-1, J-4 & J-5 (set of 2)	2.00
8.	Umbrella Ring Set Screw (incl'd w/7) (not illustrated)	2.00	28.	Coil Spring	2.00	54.	Base Plate Screws for J-1, J-4 & J-5 (set of 3)	2.00
9.	Umbrella Ring Gasket (incl'd w/7) (not illustrated)	2.00	29.	Bronze Bushing Coil Spring to Ecc. Housing 3/64 x 3/8 x 3/16	2.00	57.	Logo Plate, Label and Fasteners	8.00
10.	Plastic Bowl Support only (incl'd w/#1)	24.00	30.	Arm Screw - Small 1/4-32 x 1 1/16	3.00	61.	Thermal Overload 115/60 - Howell Motor	70.00
10A.	Plastic Dome only (incl'd w/#1)	24.00	31.	Arm Screw - Large 1/4-20 x 2 1/2	4.00	62.	Thermal Overload 230/50 - Howell Motor	84.00
10B.	Plastic Spout only (incl'd w/#1)	24.00	33.	Spring Screw to Ecc. Housing 1/4-32	2.00	64.	Model #7 or #8 Motor - 115/60 4.3 amp - 1725 rpm	340.00
11.	Bowl Support Gasket	10.00	34.	Eccentric Arm	14.00	65.	Model #7 or #8 Motor - 230/50 2.5 amp - 1425 rpm	350.00
12.	Chrome Motor Housing	105.00	35.	Ecc. Arm Bronze Bushing 1/2 x 3/16 x 3/16	2.00	67.	Model #7 or #8 Motor - 230/60 2.2 amp - 1725 rpm	350.00
13.	Electric Cord Bushing (use w/50B)	4.00	36.	Lock Washer, 3/16, Internal Tooth	1.00			
14.	Electric Cord 115/60	20.00	37.	Lock Washer, 1/4, Internal Tooth	1.00			
14A.	Rubber Cord - Export	24.00	40.	Top Motor Casting	85.00			
15.	Toggle Switch w/Switch Guard (not illustrated)	30.00						
15D.	Rocker Switch w/Switch Seal	20.00						



#### Specifications

Chrome plated steel housing. Corrosion proof plastic dome, spout & bowl support.

**Safe...Listed by Underwriters Laboratories, CSA International®, NSF International® and VDE as applicable.**

Shipping weight . . . . . 37 pounds  
 Net weight . . . . . 31 pounds  
 Overall dimensions . . . . . 17" high, 8" diameter  
 Horsepower . . . . . ¼  
 Cube . . . . . 1.12  
 Carton size . . . . . 22¾" x 9¼" x 9¼"



[www.sunkistfs.com/equipment](http://www.sunkistfs.com/equipment)

All prices quoted are subject to change without notice. The amount of any present or future tax shall be paid by the purchaser. Address all inquiries to your local dealer, or contact Sunkist Foodservice Equipment Customer Service at (800) 383-7141.

**Products must not be returned to Sunkist without a return authorization number.**