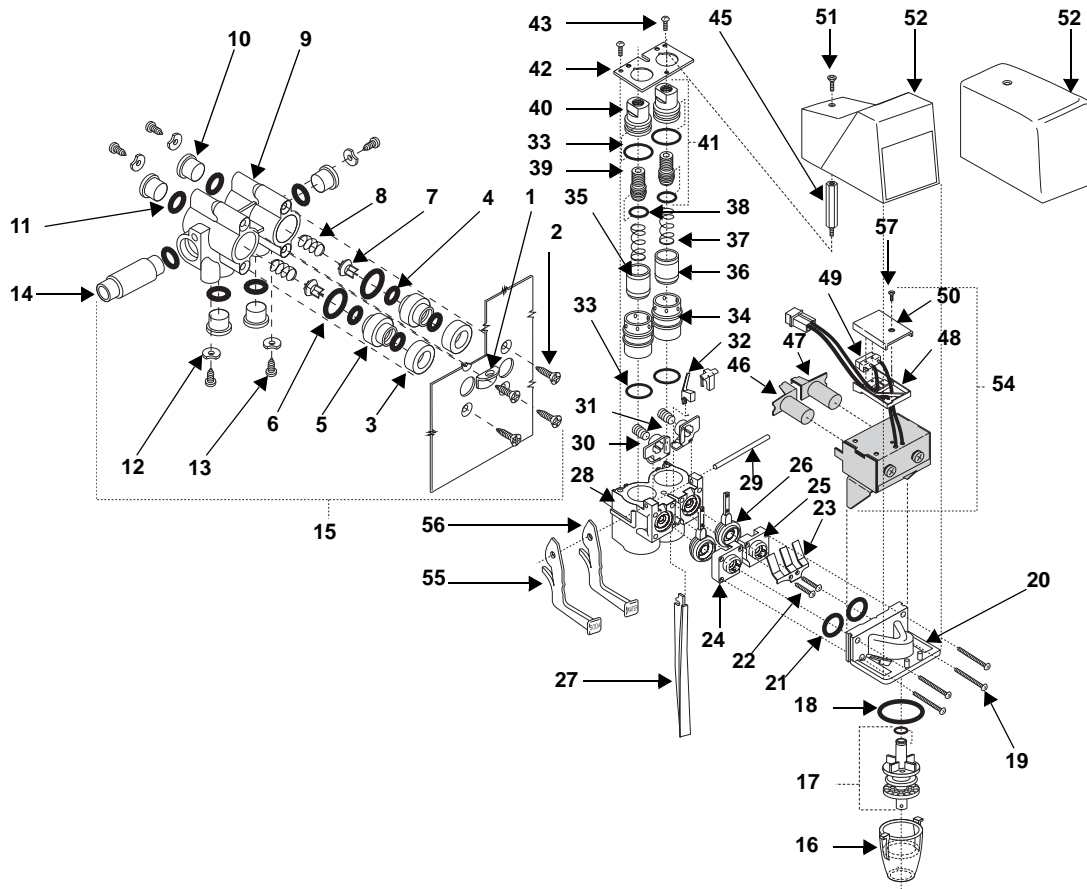


FLOMATIC®

Parts Manual

324 Post-Mix Valve



DESCRIPTION	PART NO.	DESCRIPTION	PART NO.	DESCRIPTION	PART NO.
1 Bracket	540-00	24 Orifice cap left	512-01	47 Plunger - right	764
2 Screw - 6 x 5/8 FH SS	541	25 Orifice cap right	513-01	48 Base - switch hsg	765
3 Retainer	542	26 Pallet	515	49 Micro-switch	767-00
4 O-ring(010)	543	27 Lever, black	516-07	50 Cover - switch hsg	766
5 Gland assy	544	28 Flow control base	600-00	51 Screw 4-40x5/16 SS	768
6 O-ring (014)	546	29 Pivot pin	524-02	52 Cover - PC style	1403
7 Poppet	547	30 Actuator assy - left	521-01	OPTIONAL ACCESSORIES	
8 Spring	548	31 Actuator assy - right	522-01	53 Cover - black	1303
9 Body - QD blank	549*	- Screw - actuator	523	54 Solenoid assy - complete	770-10
10 Plug - inlet ports	550	32 Retainer cap electric	517-04	55 Add-a-Lever "soda"	1027-S
11 O-ring (012)	551	- Retainer cap manual	517-00	56 Add-a-Lever "water"	1027-W
12 Retainer - washer	552	33 O-ring (017)	608	57 Screw 6-32x5/8 SS	2611
13 Screw - 6 x 7/16 PH SS	553	34 Cylinder - ceramic	602-02	VALVE ASSEMBLIES	
14 Tube - 25mm x 63mm	554-00	35 Piston - syrup	603-02	- 324-CF-E10-1403 Valve - electric lever	
15 Manifold Assembly	300-Q	36 Piston - soda	604-02	- 324-CF-S10-1404 Valve - self-service	
16 Nozzle clear	501-24	37 Spring brix adj	605-01	- 324-CF-P32-1400 Valve - portion control	
- Nozzle black	501-25	38 O-ring (012)	551	- 324-CF-1403 Valve - manual	
17 Diffuser assy w/ O-ring	504-10	39 Screw - brix adj	607*	Additional parts required for multivalve manifold strap systems – 540, 554, 555, 556, 557	
- O-ring (010)	543	40 Nut - brix adj	609*	* Parts not sold separately	
18 O-ring (021)	500	41 Brix adj assy - complete	642-00		
19 Screw 4-40x1 SS	505	42 Retainer plate	610		
20 Diffuser block	507-20	43 Screw 4-40x1/4 SS	611		
21 O-ring (112)	509	44 Pin - 64mm	538-02		
22 Screw 4-40x5/8 SS	510	45 Stud	806		
23 Spring pallet retainer	511	46 Plunger - left	763		