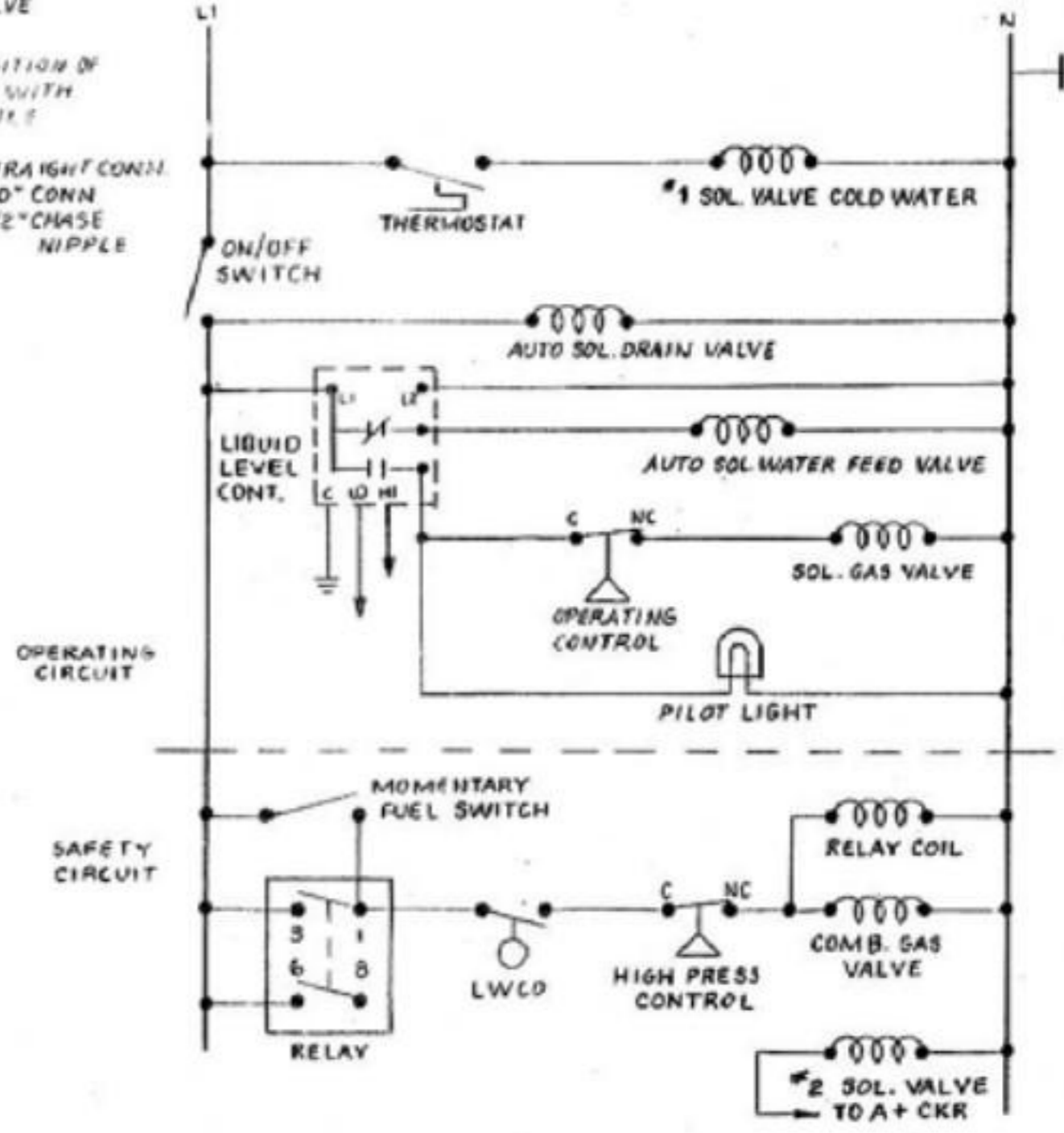


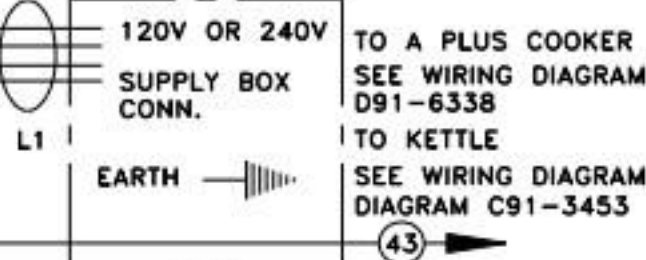
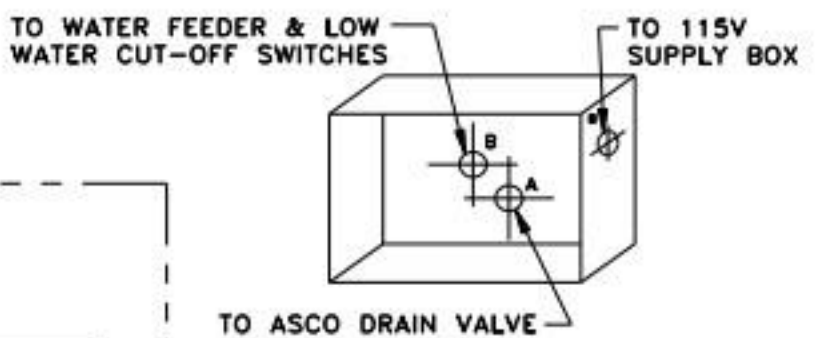
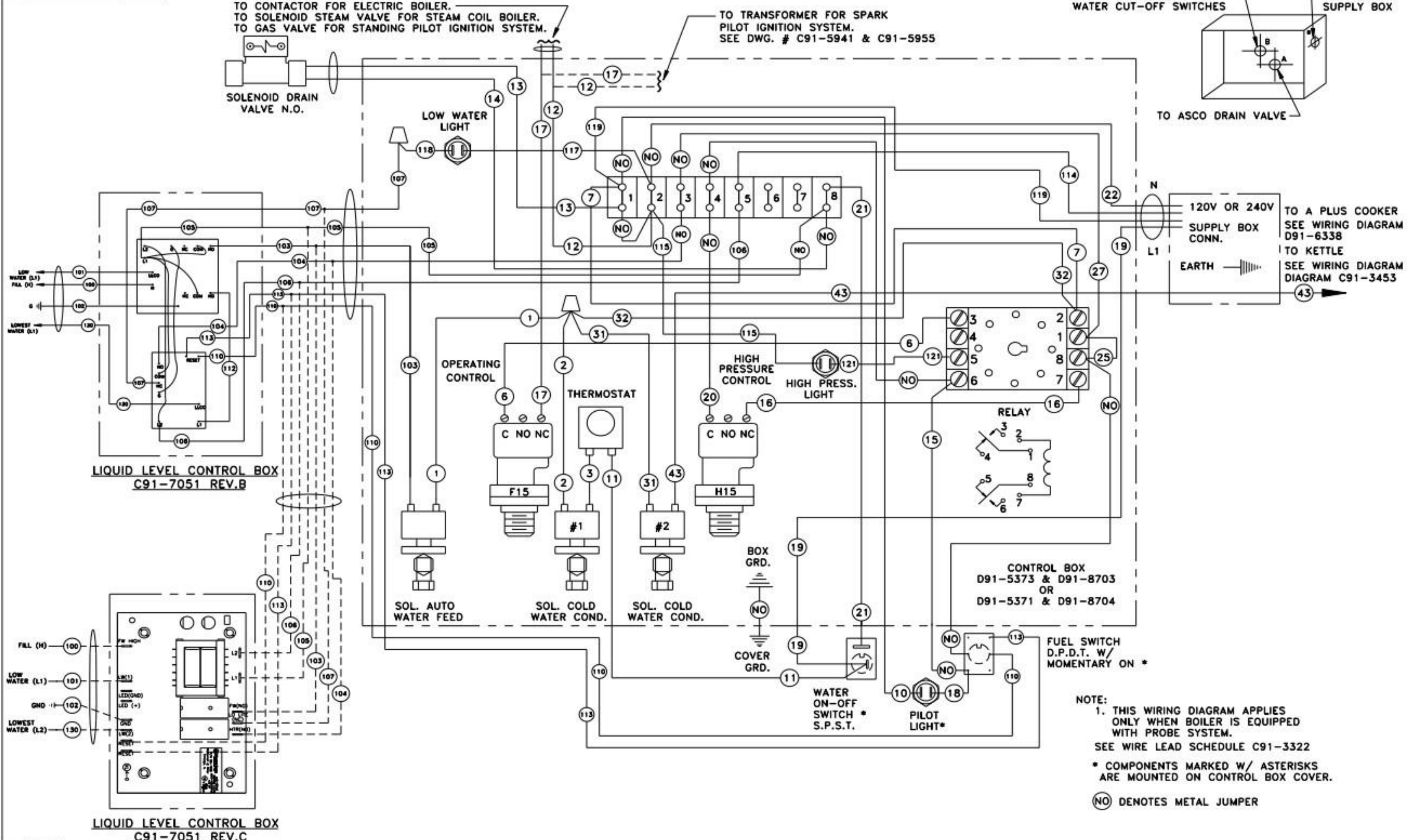
REV.	SYM.	DATE	REV. EDN #	BY
0	0-3-85			
A	U-3-82		REL 9015 96	
B	023-82		REPLACES C91-788	
C	7-11-77		EDM # 7837	



- NOTES:
1. ALL WIRES TO BE #16 AWG VULCANITE INSULATED MOTOR AND APPLIANCE WIRE. ALTERNATE WIRE - SFF-2, SEWF-2 600V, 150°C COPPER CONDUCTOR INSULATED WITH 1/32 WALL OF SILICONE COATED WITH FIBERGLASS.
 2. UNIT MUST BE GROUNDED; NEUTRAL TO BE GROUNDED BY INSTALLER.
 3. WIRES # 1, 2, 7, 10, 122 TO BE WHITE, #30 TO BE GREEN, ALL OTHERS TO BE BLACK.
 4. COMPONENTS MARKED WITH ASTERISKS * ARE MOUNTED ON CONTROL BOX COVER.
 5. SEE WIRE LEAD SCHEDULE C91-7186

OBsolete
 EDM 7838
 SEE C91-5155
 V. MILAND

IF OUTSIDE SOURCED, CALL FOR INSPECTION UPON RECEIPT		DATE STAMP	
DE-SERVING - MARKET FORGE SPECIFICATION #127		TOLERANCES UNLESS OTHERWISE SPECIFIED	
CLASS 1 0	CLASS 11 0	DECIMAL DIM: .000 + 2.00%, .00 + 2.01	FRACTIONAL DIM: 2/1/32
USED ON		Market Forge Co. EVERETT, MA 02149	
C91-7186	91-7186	WIRING DIAGRAM - AUTOMATIC BOILERS W/ CALIFORNIA SAFETY CONTROLS FOR A-PLUS COOKER 120V.	
B, BM 91-532, 3		DRAWN M. COPPOLA	
D91-3096		CHECKED	
		ENG. APP. V	
		DATE 11-3-82	
		SCALE NONE	
		MFG. APP. V	
		DRAWING NO. C 91-7182	
		REV. 0	

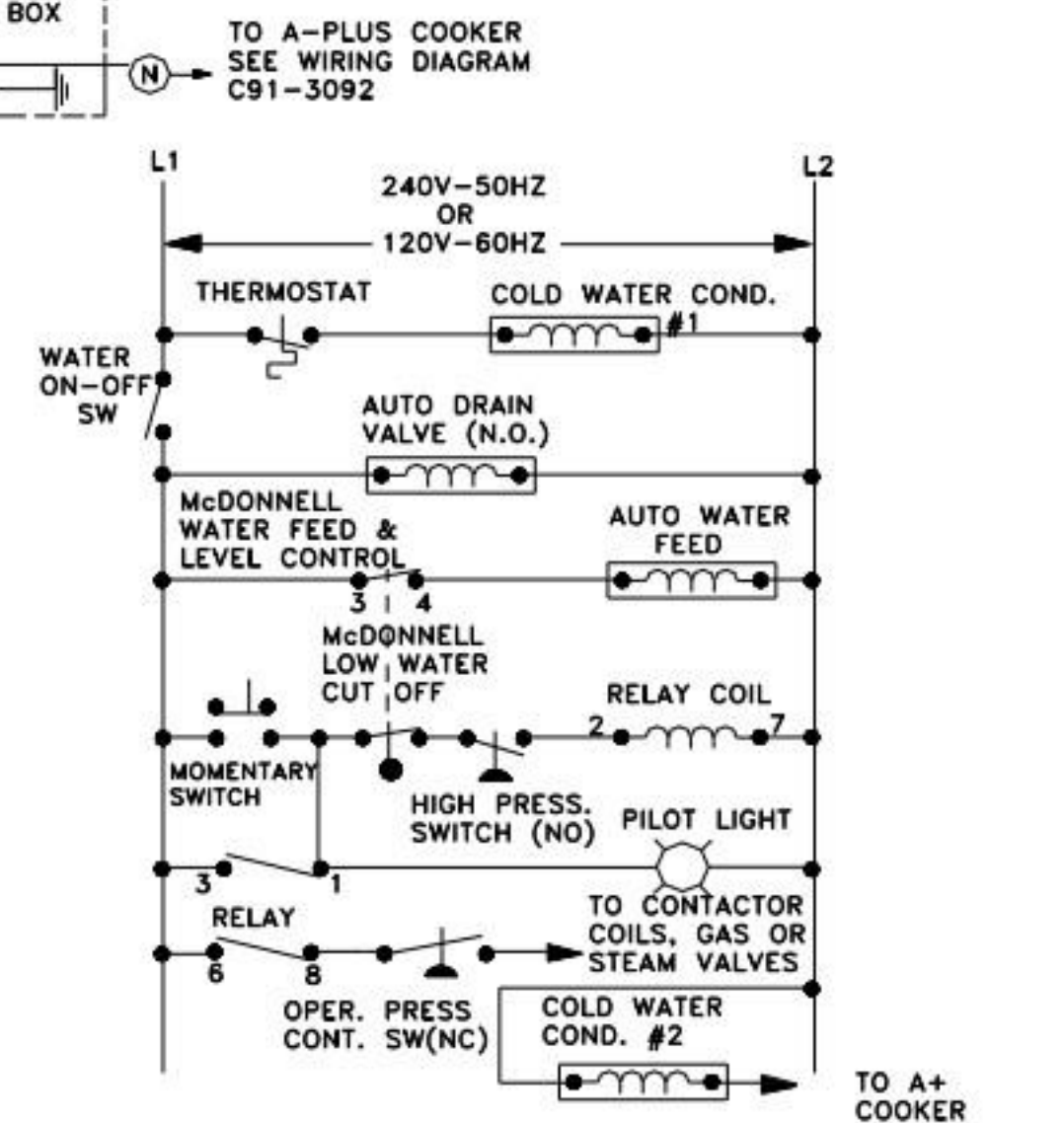
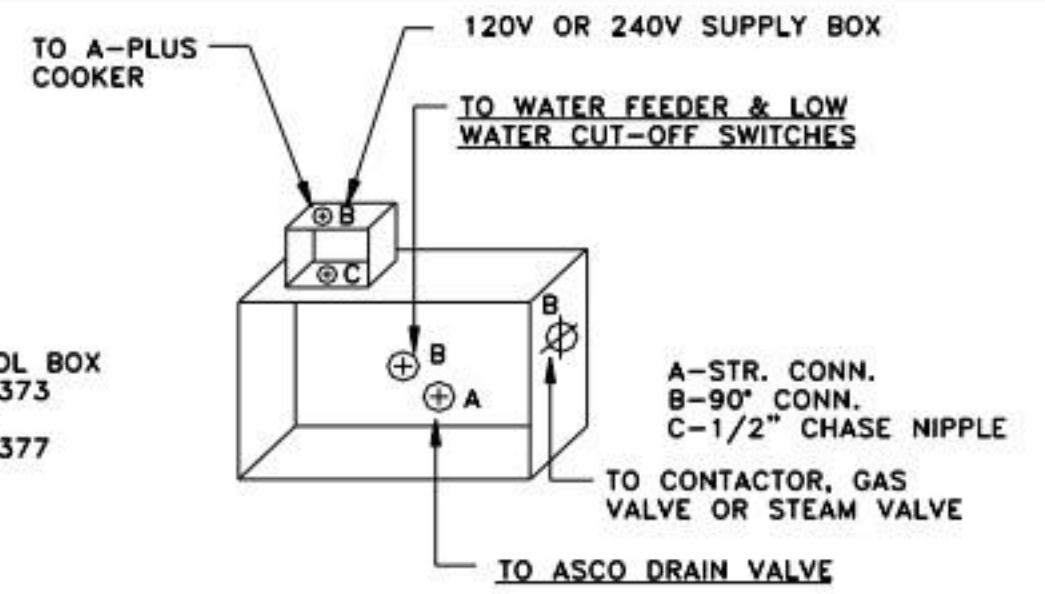
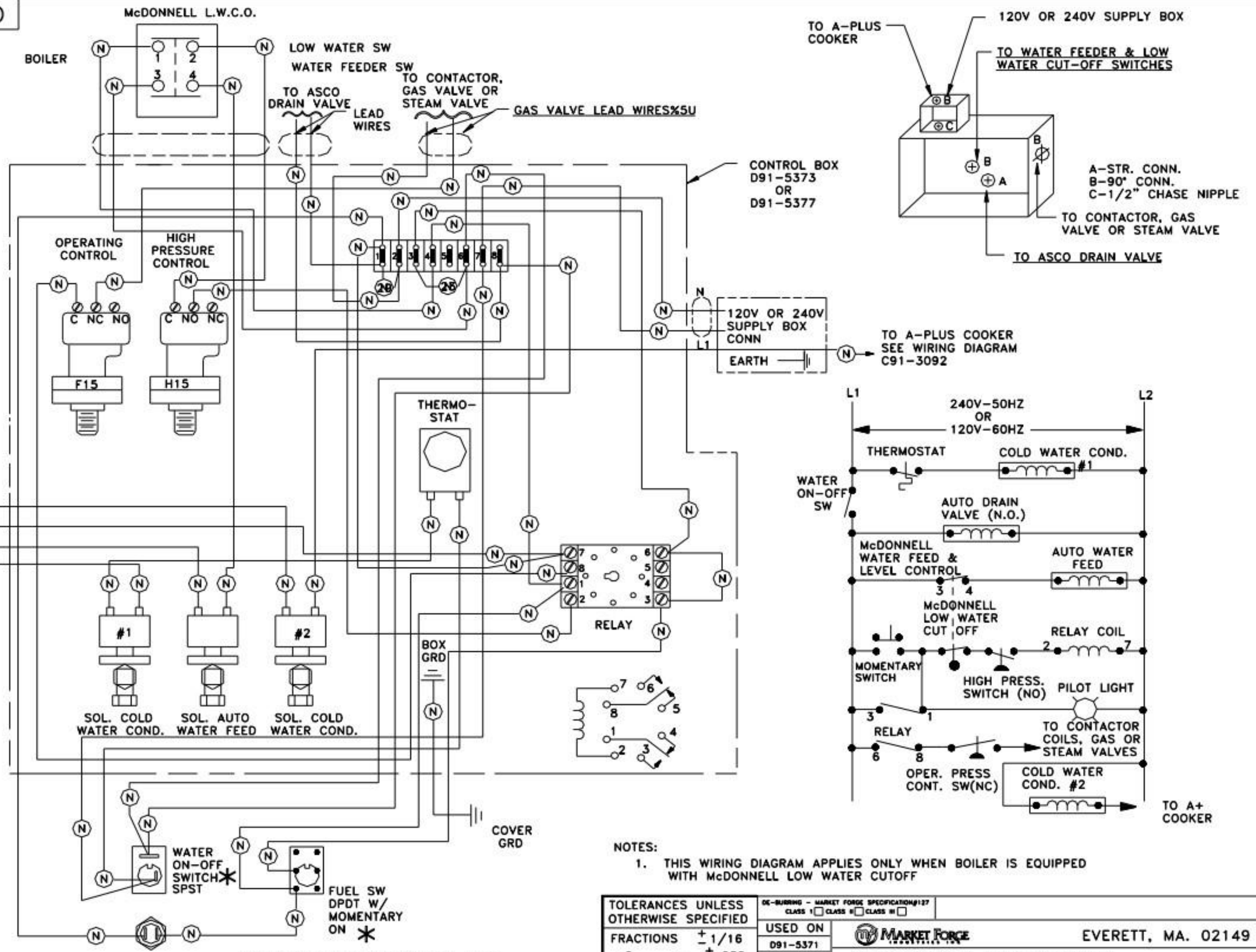


NOTE:
 1. THIS WIRING DIAGRAM APPLIES ONLY WHEN BOILER IS EQUIPPED WITH PROBE SYSTEM.
 SEE WIRE LEAD SCHEDULE C91-3322
 * COMPONENTS MARKED W/ ASTERISKS ARE MOUNTED ON CONTROL BOX COVER.
 (NO) DENOTES METAL JUMPER

REV.	DATE	BY	REV. NO.
1	1-28-89	RELEASE PER 10317	MD
2	02/20/00	CLOSED L.L. CONTROL BOX C91-7051 REV. C91-7051	AJR.

TOLERANCES UNLESS OTHERWISE SPECIFIED		DE-BURRING - MARKET FORCE SPECIFICATIONS 127	
FRACTIONS ± 1/16		CLASS I CLASS II CLASS III	
.0	- .032	USED ON	
.00	- .015	D91-5371	
.000	- .005	D91-5373	
ANGLES - + 1°		D91-8703	
		D91-8704	
		DRAWN A.E.	
		CHECKED	
		ENG. APP.	
		DATE 1/28/99	
		SCALE NONE	
		MFG. APP.	
		EVERETT, MA. 02149	
		WIRING DIAGRAM & SCHEMATIC- CONTROL BOX FOR CALIF./CSD1	
		ELECTRIC AUTO BOILERS WITH A+ COOKER 120V/240V	
		DRAWING NO. REV.	
		C 91-3463 P	

REV. NO.
DATE



NOTES:
1. THIS WIRING DIAGRAM APPLIES ONLY WHEN BOILER IS EQUIPPED WITH McDONNELL LOW WATER CUTOFF

TOLERANCES UNLESS OTHERWISE SPECIFIED

FRACTIONS	+ 1/16
.0	+ .032
.00	+ .015
.000	+ .005
ANGLES	+ 1°

DE-BURRING - MARKET FORGE SPECIFICATIONS#127		CLASS I <input type="checkbox"/> CLASS II <input type="checkbox"/> CLASS III <input type="checkbox"/>	
USED ON	MARKET FORGE		EVERETT, MA. 02149
D91-5371			
D91-5373	WIRING DIAGRAM & SCHEMATIC-CONTROL BOX FOR AUTO BOILERS W/A+ CONTROL		
DRWN SJI	CHECKED	ENGR. APP.	DATE
DATE 7/25/92	SCALE NONE	INFO. APP.	
			C
			91-3321
			E

WEE WIRE LEAD SCHEDULE: C91-3322

ERO # C6041

* COMPONENTS MARKED WITH ASTERISKS ARE MOUNTED ON CONTROL BOX COVER

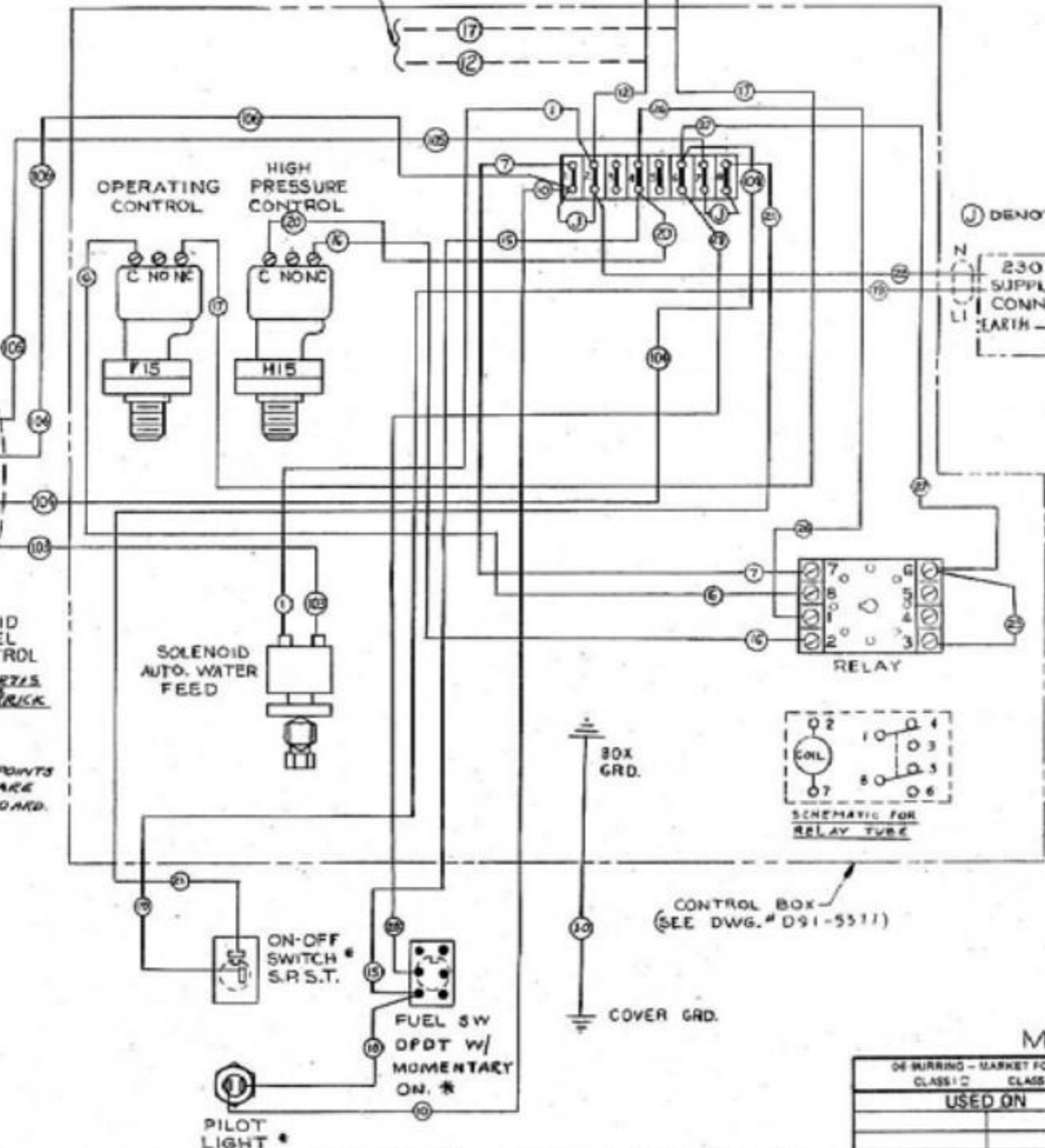
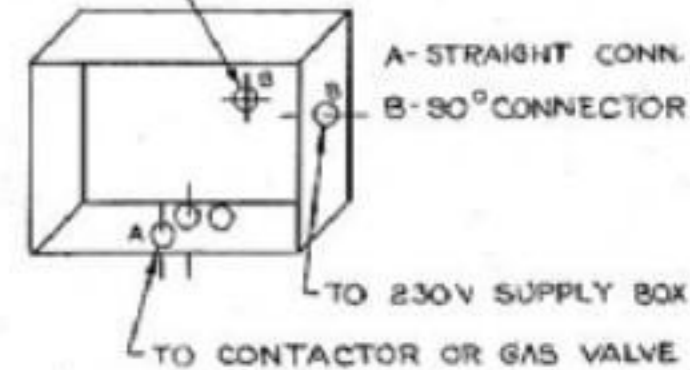
PILOT LIGHT *

REV	DATE	BY	DESCRIPTION
A	6/2/81	AK	REVISION WITH COMMENTS AND NEW WIRE LEAD SCHEDULE FORM. COMP. 20M33465
B	5-1-81	AK	W/ 918038
C	1-29-81	AK	W/ 9133490
D	8-28-80	AK	REPLATED W/ 785 *18,18

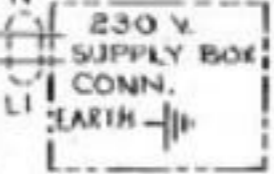
TO TRANSFORMER FOR SPARK PILOT IGNITION SYSTEM. SEE DWG# C91-5941 & C91-5953.

TO CONTACTOR FOR ELECTRIC BOILER.
 TO GAS VALVE FOR STANDARD PILOT IGNITION SYSTEM.

TO WATER FEEDER & LOW WATER CUT-OFF SWITCHES



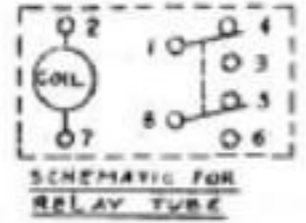
J DENOTES METAL JUMPER



NOTES:

1. #16 GA. 125°C G.E. VULKENE INSULATED MOTOR & APPLIANCE LEAD WIRE.
2. ALTERNATE WIRE: SFF-2 SEVF-2 600V 150°C COPPER CONDUCTOR INSULATED WITH 1/32 WALL OF SILICONE COATED WITH FIBERGLASS.
3. UNIT MUST BE GROUNDED.
4. WIRES NUMBERED 1,7,10 & 22 TO BE WHITE WIRE - ALL OTHERS TO BE BLACK
5. THIS WIRING DIAGRAM APPLIES ONLY WHEN BOILER IS EQUIPPED WITH A PROBE SYSTEM
6. SEE WIRE LEAD SCHEDULE C90-9740

NOTE: TERMINATION POINTS IDENTIFIED IN () ARE FOR A WARRICK BOARD.



A09-6181 REV.C

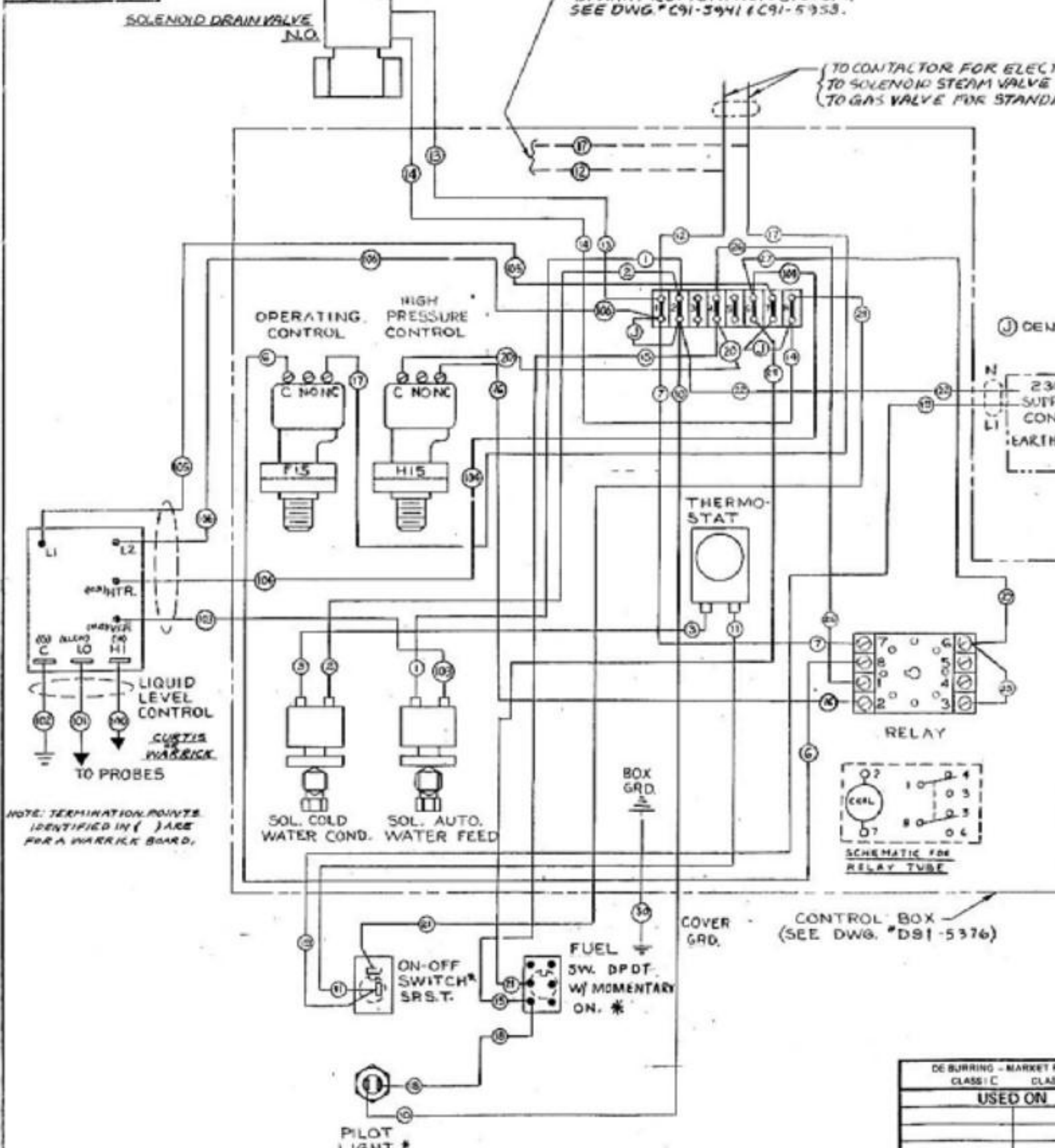
FOR USE ON MODELS:
 M24E1, M24E2, M36E1,
 M36E2 & M36E3

MODULAR ERO #4860A

DE WIRING - MARKET FORGE SPECIFICATION #127			TOLERANCES UNLESS OTHERWISE SPECIFIED		
CLASS I □	CLASS II □	CLASS III □	DECIMAL DIMS. ± .010	FRACTIONAL DIMS. ± 1/32	± DIMS. ± 1"
USED ON			Market Forge EVERETT, MA. 02149		
WIRING DIAGRAM - 230V CONTROL BOX					
MANUAL BOILERS WITH MANUAL-RESET 50/60 HZ.					
BRNWR	CHECKED	L.O. NO.	DRAWING NO.	REV.	
BM 91-5377	D91-5	DATE: 1-25-74	SCALE: 1/2"	APP. BY: [Signature]	C 91-2035 J

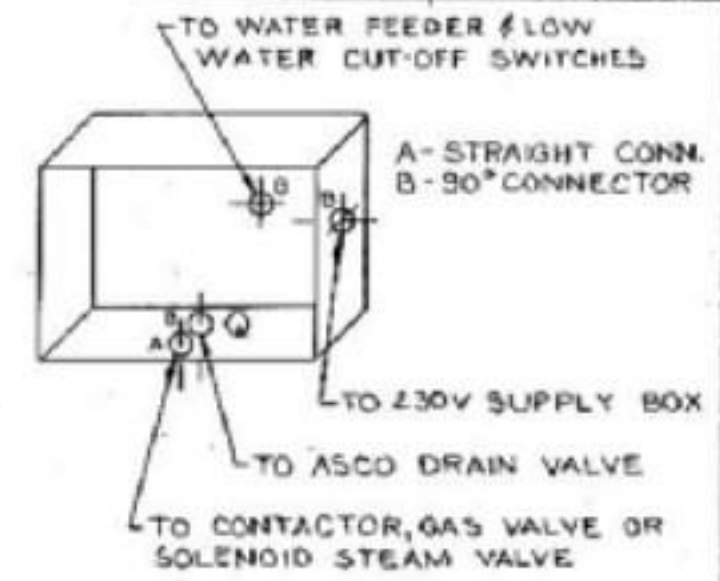
*COMPONENTS MARKED W/ ASTERISKS ARE MOUNTED ON CONTROL BOX COVER

REV.	DATE	BY	REVISION
G	5-2-83
N
F
E
A	6-3-80
B	2-1-80
C	6-25-81
D

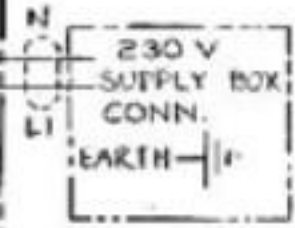


NOTES:

1. #16 GA. 125°C GE. VULKENE INSULATED MOTOR & APPLIANCE LEAD WIRE.
2. ALTERNATE WIRE: SFF-2 (SEWF-2) 600 V, 150°C - COPPER CONDUCTOR INSULATED WITH 1/32 WALL OF SILICONE COATED WITH FIBERGLASS.
3. UNIT MUST BE GROUNDED
4. WIRES NUMBERED 1, 2, 7, 10, 13 & 22 TO BE WHITE WIRE - ALL OTHERS TO BE BLACK
5. THIS WIRING DIAGRAM APPLIES ONLY WHEN BOILER IS EQUIPPED WITH NORMALLY OPEN DRAIN VALVE.
6. THIS WIRING DIAGRAM APPLIES ONLY WHEN BOILER IS EQUIPPED WITH A PROBE SYSTEM
7. SEE SCHEDULE C90-9740.



(J) DENOTES METAL JUMPER



NOTE: TERMINATION POINTS IDENTIFIED IN () ARE FOR A WARRICK BOARD.

* COMPONENTS MARKED W/ ASTERISKS ARE MOUNTED ON CONTROL BOX COVER

A09-6180 REV. C

FOR USE ON MODELS M24E1A, M24E2A, M36E1A, M36E2A & M36E3A

MODULAR

DE BURRING - MARKET FORGE SPECIFICATION #127			TOLERANCES UNLESS OTHERWISE SPECIFIED		
CLASS C	CLASS H (1)	CLASS H (2)	DECIMAL DIMS. ± .010	FRACTIONAL DIMS. ± 1/32	± DIMS. ± 1"
USED ON			Market Forge EVERETT, MA. 02149		
WIRING DIAGRAM - 230V CONTROL BOX AUTOMATIC BOILERS W/MANUAL RESET 50/60 HZ.					
DRAWN BY: ELL	CHECKED: [Signature]	L.D. NO.	DRAWING NO.	REV.	
D91-5376	D91-5376		C 91-2034	J	
DATE: 1-25-74	SCALE: 1/2"	APP. ENG. [Signature]	REDRAWN W/CHANGES BY: R. KADLICK		

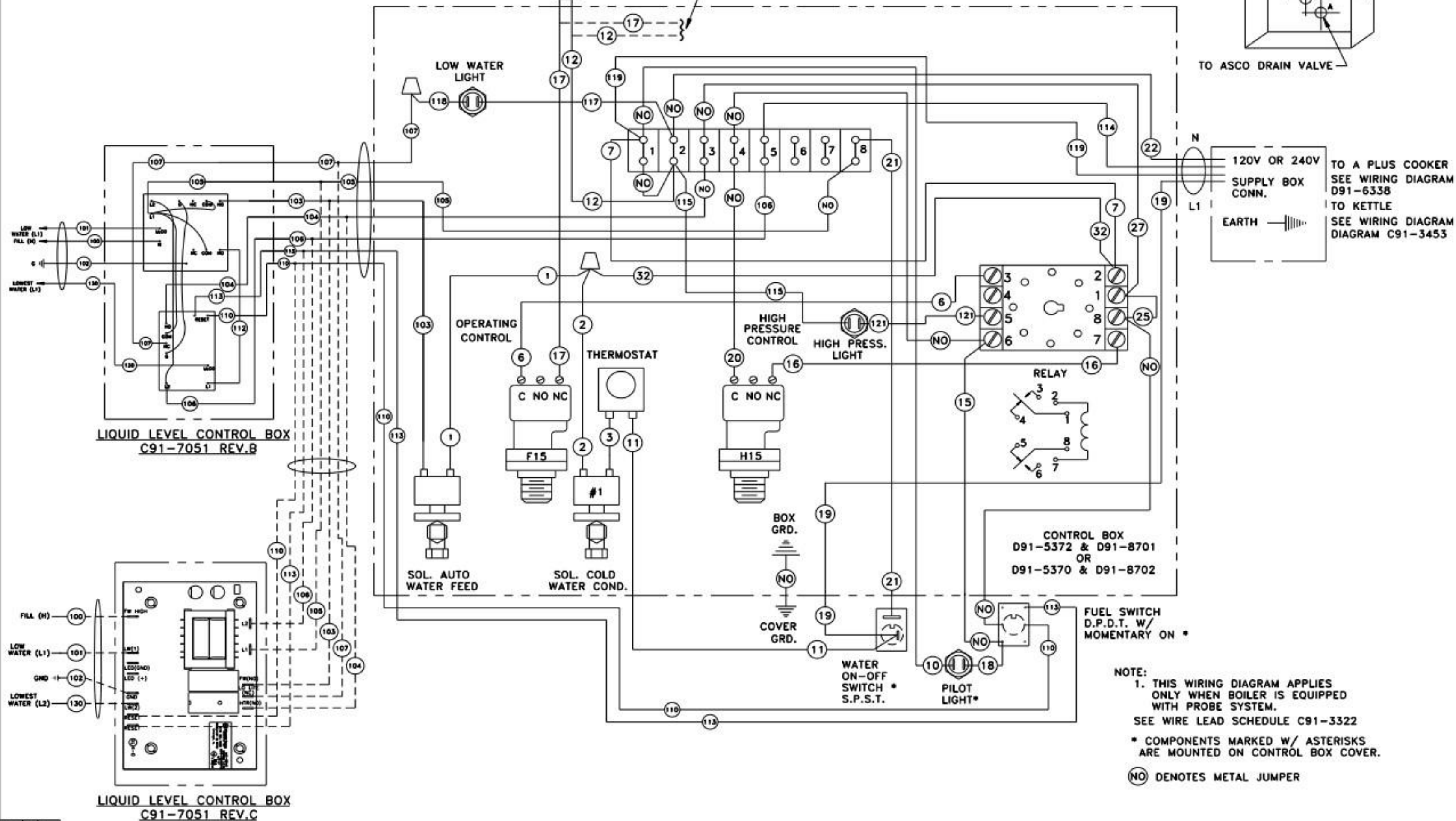
TO CONTACTOR FOR ELECTRIC BOILER.
 TO SOLENOID STEAM VALVE FOR STEAM COIL BOILER.
 TO GAS VALVE FOR STANDING PILOT IGNITION SYSTEM.

TO TRANSFORMER FOR SPARK
 PILOT IGNITION SYSTEM.
 SEE DWG. # C91-5941 & C91-5955

TO WATER FEEDER & LOW
 WATER CUT-OFF SWITCHES
 TO 115V
 SUPPLY BOX

TO ASCO DRAIN VALVE

TO A PLUS COOKER
 SEE WIRING DIAGRAM
 D91-6338
 TO KETTLE
 SEE WIRING DIAGRAM
 DIAGRAM C91-3453

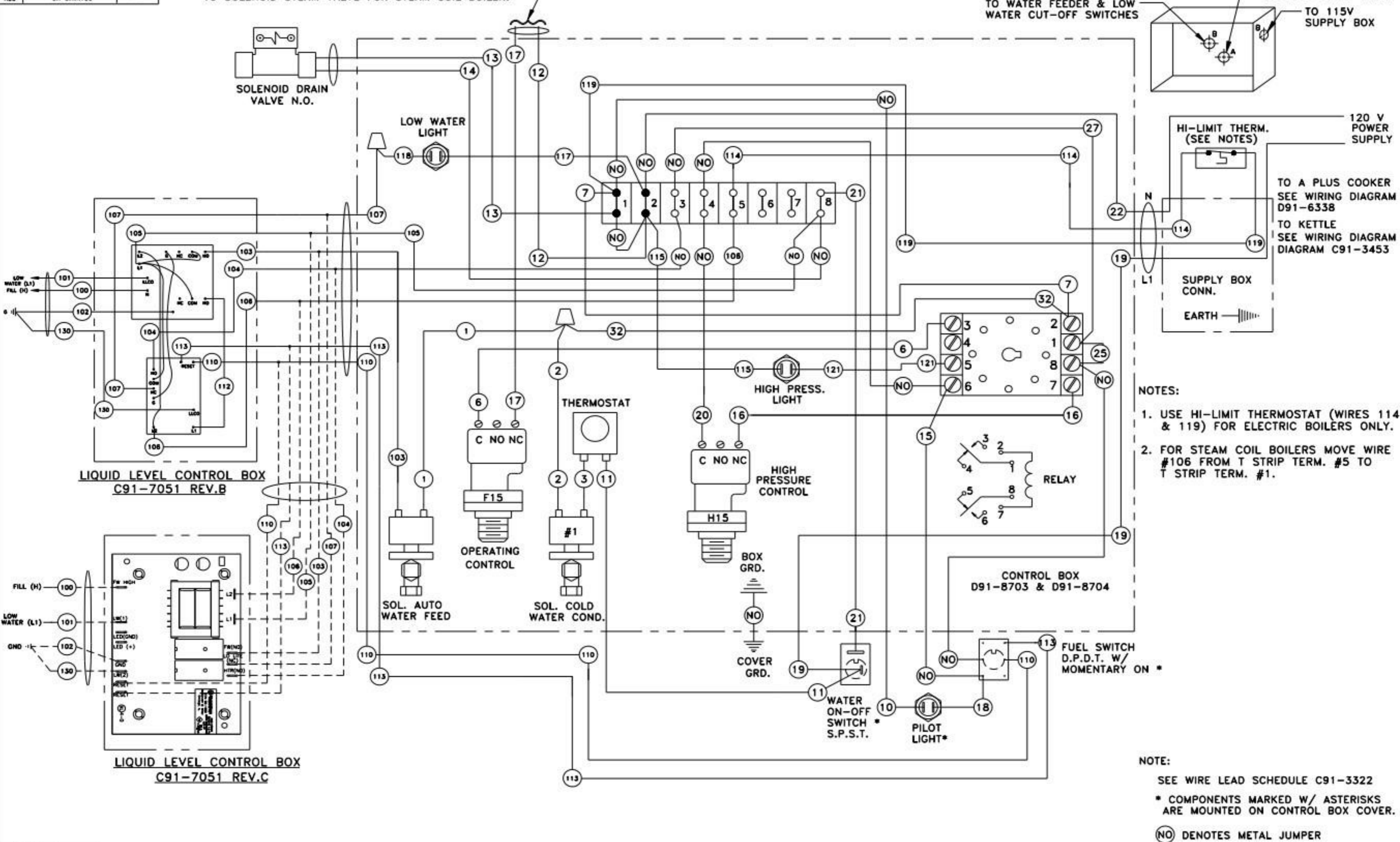


BY	REV.	DATE	DESCRIPTION
L	1	1-28-99	RELEASE PER 10/17/99
M	2	3/12/00	ADD LL CONTROL BOX C91-7051 REV.C

TOLERANCES UNLESS OTHERWISE SPECIFIED		DE-BURRING - MARKET FORCE SPECIFICATIONS 127	
FRACTIONS	+ 1/16	CLASS 1	CLASS II
.0	- +.032	CLASS III	
.00	- +.015		
.000	- +.005		
ANGLES	- +1°		

USED ON	MARKET FORCE		EVERETT, MA. 02149
D91-5370			
D91-5372	WIRING DIAGRAM & SCHEMATIC- CONTROL BOX FOR CALIF./CSD1		
D91-8701	ELECTRIC MANUAL BOILERS		
D91-8702			
DRAWN	A.E.	CHECKED	ENG. APP.
DATE	1/28/99	SCALE	NONE
		MFG. APP.	
			DRAWING NO. C
			10-6081 M

TO CONTACTOR FOR ELECTRIC BOILER.
TO SOLENOID STEAM VALVE FOR STEAM COIL BOILER.



- NOTES:
1. USE HI-LIMIT THERMOSTAT (WIRES 114 & 119) FOR ELECTRIC BOILERS ONLY.
 2. FOR STEAM COIL BOILERS MOVE WIRE #106 FROM T STRIP TERM. #5 TO T STRIP TERM. #1.

NOTE:
SEE WIRE LEAD SCHEDULE C91-3322
* COMPONENTS MARKED W/ ASTERISKS ARE MOUNTED ON CONTROL BOX COVER.
⊙ DENOTES METAL JUMPER

REV.	DATE	BY	DESCRIPTION
1	1-28-99	W	RELEASE PER 10317
2	04/11/00	W	ADDED L.L. CONTROL AD.
3	04/11/00	W	ADDED HI-LIMIT THERM. W/ WIRE FOR ELECTRIC BOILER. REMOVED REF. TO USE CONTROL BOX COVER CONNECTION IN PLACE FOR 1055

TOLERANCES UNLESS OTHERWISE SPECIFIED

FRACTIONS	± 1/32
.0	- ± .032
.00	- ± .015
.000	- ± .005
ANGLES	- + 1°

DE-BURRING - MARKET FORGE SPECIFICATION#127
CLASS 1 CLASS # CLASS #

USED ON
D91-8703
D91-8704

MARKET FORGE
EVERETT, MA. 02149

WIRING DIAGRAM & SCHEMATIC- CONTROL BOX FOR CALIF./CSD1
ELECTRIC AUTO BOILERS / STEAM COIL 120/240V

DRAWN A.E.	CHECKED	ENG. APP.	DRAWING NO. C 10-6077
DATE 1/28/99	SCALE NONE	MFG. APP.	REV. X

AUTOCAD FILE NAME: 106077W