

# Forced Air Holding Cabinet (MHB)

## Parts Manual

This manual is updated as new information and models are released. Visit our website for the latest manual.



**NOTICE**

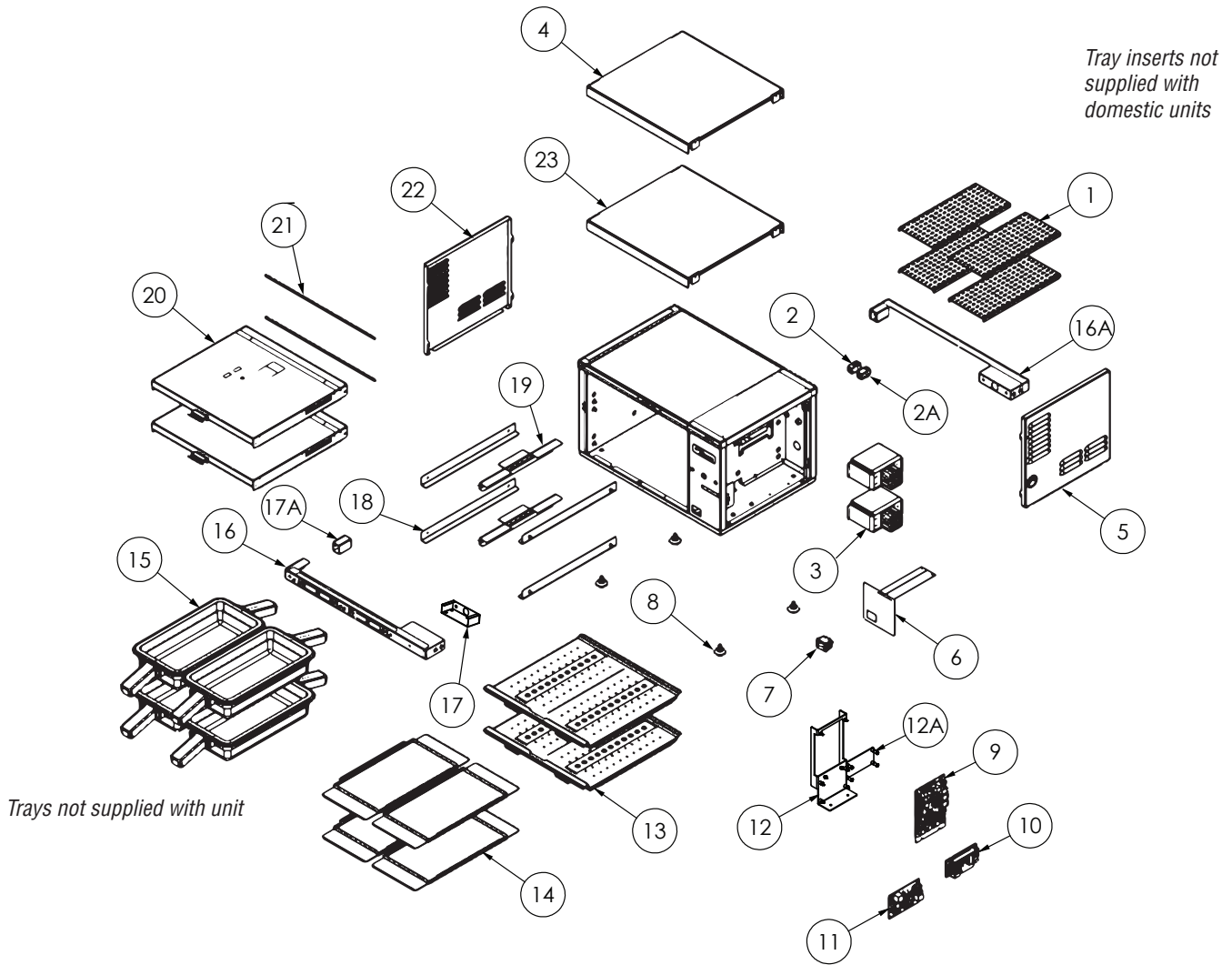
IF, DURING THE WARRANTY PERIOD, THE CUSTOMER USES A PART FOR THIS MERCO EQUIPMENT OTHER THAN AN UNMODIFIED NEW OR RECYCLED PART PURCHASED DIRECTLY FROM MERCO, OR ANY OF ITS FACTORY AUTHORIZED SERVICERS, AND/OR THE PART BEING USED IS MODIFIED FROM ITS ORIGINAL CONFIGURATION, THIS WARRANTY WILL BE VOID. FURTHER, MERCO AND ITS AFFILIATES WILL NOT BE LIABLE FOR ANY CLAIMS, DAMAGES OR EXPENSES INCURRED BY THE CUSTOMER WHICH ARISE DIRECTLY OR INDIRECTLY, IN WHOLE OR IN PART, DUE TO THE INSTALLATION OF ANY MODIFIED PART AND/OR PART RECEIVED FROM AN UNAUTHORIZED SERVICER.

# Table of Contents

---

<b>MHB22 - Common Components .....</b>	<b>2</b>
<b>MHB23 - Common Components .....</b>	<b>4</b>
<b>MHB24 - Common Components .....</b>	<b>6</b>
<b>MHB34 - Common Components .....</b>	<b>8</b>
<b>ICC Replacement Parts .....</b>	<b>10</b>

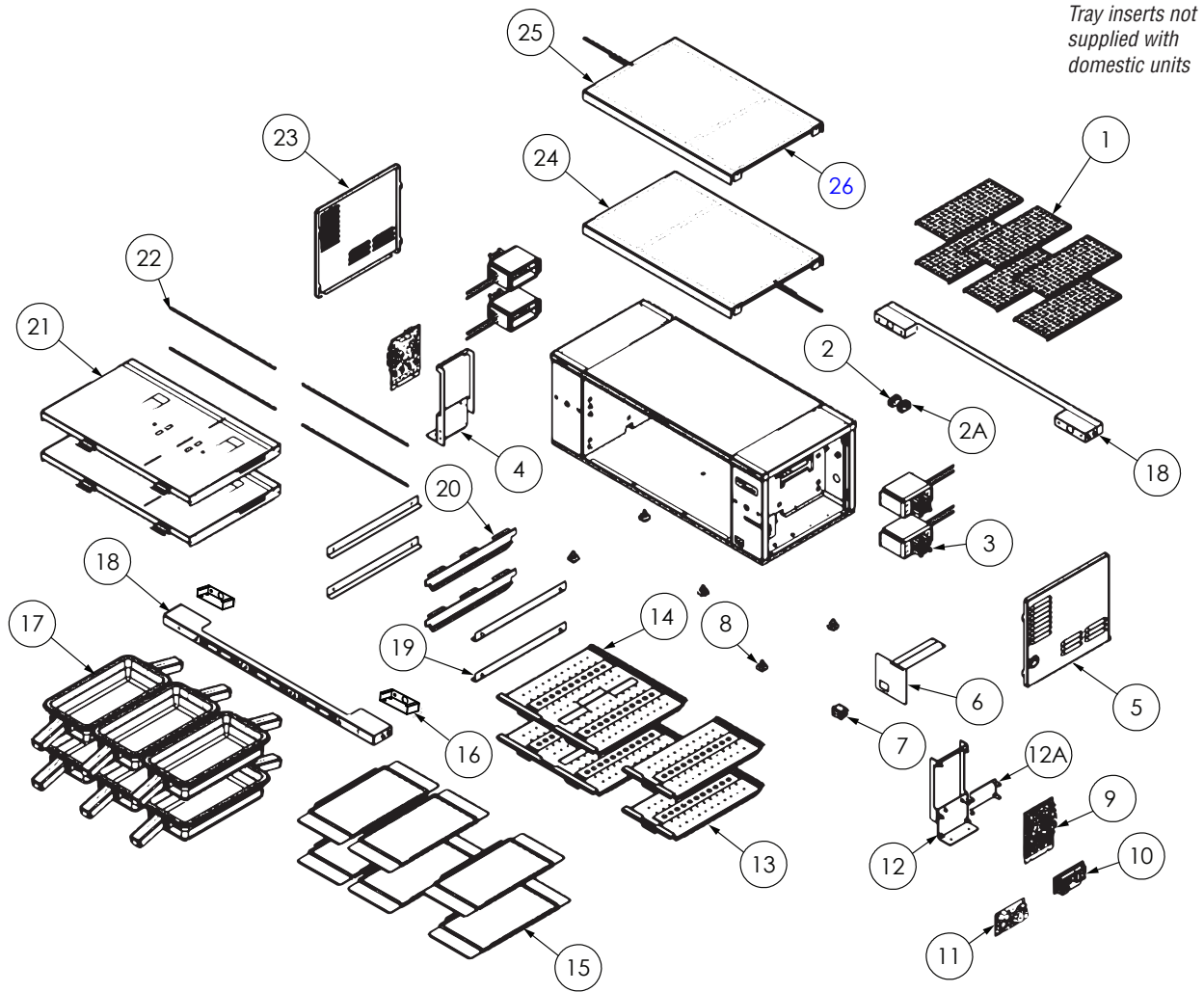
# MHB22 - Common Components



	Item	Part Number	Description	Note
		1087328	Complete Cabinet Assembly (MHB22)	
	1	<a href="#">MER10001682</a>	Tray Insert (FM PN 2601740)	
√	2	<a href="#">2198597</a>	Coupler, Female, RJ-12, Connects Primary PHU to Secondary PHU (FM PN 8076020)	
√	2A	<a href="#">2198596</a>	Coupler, Female, RJ-45, Connects Primary PHU to Kitchen Minder (FM PN 8076019)	
√	3	1087309SP	Heater Assembly, 120V, 700W, Air with Fan	
√	4	8076100	Heater Pad, 120V, 330W w/Thermocouple Kit	
	5	2601675	Right Hand Side Cover Panel	
	6	8076000	Membrane Switch	
√	7	8076023	Rocker Switch, 250V, 16A	
	8	<a href="#">MER340011</a>	Hi Temp Leveling Mount (FM PN <a href="#">8104733</a> )	
√	9	8263404	Board, I/O Merco w/ SUI (Units connected to kitchen network)	
√	10	<a href="#">2195354</a>	Power Supply, 12VDC, 30W (FM PN <a href="#">8076001</a> )	
√	11	8263406	Board, SUI Merco PHU	
	12	1087268	Bracket, I/O Board w/ SUI	
	12A	1087269	Bracket, Power Supply	
	13	8239275	Diffuser, Air Assembly 2 Wide	
	14	<a href="#">8242410</a>	Tray Seal	
	15	1708578	Plastic Tray, Double Handle (FM PN <a href="#">8030491</a> )	
√	16	<a href="#">8263411</a>	Timer Bar Assembly, 2/Wide 2/Display, Front (Single Sided Unit only)	
√		8263412	Timer Bar Assembly, 2/Wide 2/Display, Front (Double Sided Unit only)	
√	16A	8263413	Timer Bar Assembly, 2/Wide 2/Display, Rear (Double Sided Unit only)	
	17	8242417	Assembly, Timer Bar Mounting Bracket	
	17A	8239286	Assembly, Timer Bar Mounting Bracket 2-Wide	
	18	2601693	Support, Hold-down Shelf	
	19	8239271	Divider, W/A, Plenum Center	
	20	8239284	Air W/A, 2X2 Plenum	
√	21	8076102	Probe, Air Heater	
	22	<a href="#">2601677</a>	Left Hand Side Cover Panel	
	23	8104752	Shelf, BK 2 Wide Heater Pad w/ Thermocouple	
		8076027	Board, Converter RS232/RS485	
		8076028	Cable, SUI to Converter	
		8076029	Cable, Communication Long 9.50"	
		8076030	Coupler, Female, RJ-12 Cross Wire	
		<a href="#">2186997</a>	Comm Cable 8 pin, 52" internal from Primary IO BD to Secondary IO BD (FM# <a href="#">8076017</a> )	
		<a href="#">2186998</a>	Cable, Communication Master to Display, 6-pin, 12 inch internal cable (FM PN 8076009)	
		<a href="#">2187049</a>	Cable, Data, 6 pin - 96 inch external cable from Primary PHU to Secondary PHU	
		<a href="#">2187007</a>	Cable, 12 inch, USB ext., Panel Mount Female, from IO Board to USB port (FM PN <a href="#">8076010</a> )	
		<a href="#">8076011</a>	Cable, 8-pin, SUI to Ethernet	
		8076012	Cable, 6-pin to 4-pin, <a href="#">26</a> ", Display to Timerbar	
		8076080	Harness, AC Power, 2X2	
		8076079	Harness, DC Power, 2X2	
		<a href="#">8076017</a>	Cable, Communication 8-pin, 52" IO to IO, Long	
		<a href="#">2186984</a>	Cord, NEMA 5-20P, 12/3 Domestic (FM PN 8076062)	
		8076028	Cable, SUI to Converter, 12", 8-pin, 4-pin, 3-pin, 2-pin	
		<a href="#">2187033</a>	Cordset, Pin/Sleeve, 16A, Export	

√ Recommended Parts

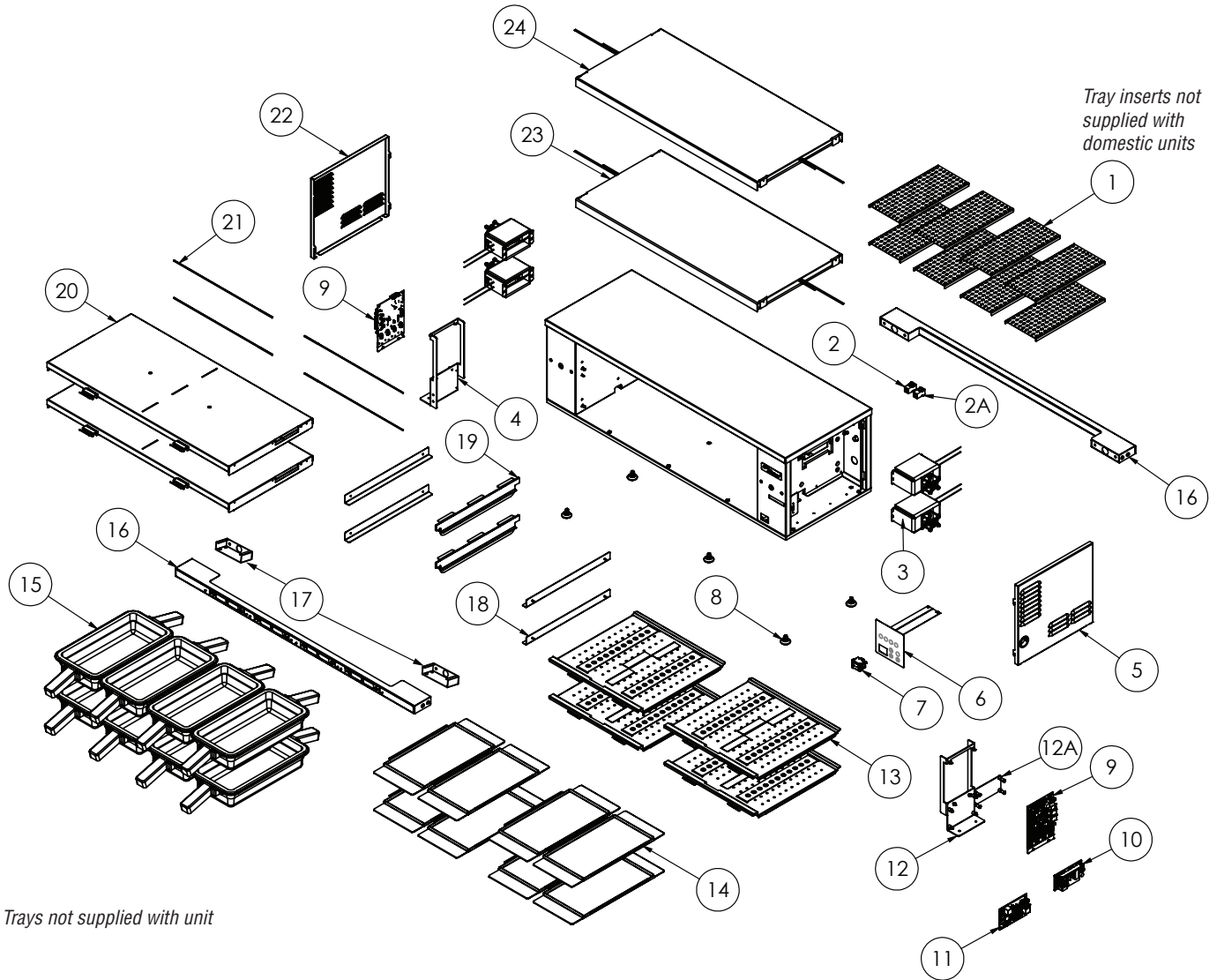
# MHB23 - Common Components



Item	Part Number	Description	Note
	1087329	Complete Cabinet Assembly (MHB23)	
1	<a href="#">MER10001682</a>	Tray Insert (FM PN 2601740)	
√ 2	<a href="#">2198597</a>	Coupler, Female, RJ-12, Connects Primary PHU to Secondary PHU (FM PN 8076020)	
√ 2A	<a href="#">2198596</a>	Coupler, Female, RJ-45, Connects Primary PHU to Kitchen Minder (FM PN 8076019)	
√ 3	1087310SP	Heater Assembly, 230V, 700W, Air w/Fan (replace with 450W if voltage is greater than 230V)	
√	1087290SP	Heater Assembly, 230V, 450W, Air with Fan	
4	1087272	Bracket, I/O Board w/out SUI	
5	2601675	Right Hand Side Cover Panel	
6	8076000	Membrane Switch	
√ 7	8076023	Rocker Switch, 250V, 16A	
8	<a href="#">MER340011</a>	Hi Temp Leveling Mount (FM PN <a href="#">8104733</a> )	
√ 9	8263404	Board, I/O Merco w/ SUI (Units connected to kitchen network)	
√ 10	<a href="#">2195354</a>	Power Supply, 12VDC, 30W (FM PN <a href="#">8076001</a> )	
√ 11	8263406	Board, SUI Merco PHU	
12	1087268	Bracket, I/O Board w/ SUI	
12A	1087269	Bracket, Power Supply	
13	8239283	Diffuser, Air Assembly 1 Wide	
14	8239275	Diffuser, Air Assembly 2 Wide	
15	<a href="#">8242410</a>	Tray Seal	
16	8242417	Assembly, Timer Bar Mounting Bracket	
17	1708578	Plastic Tray, Double Handle (FM PN <a href="#">8030491</a> )	
√ 18	<a href="#">8263410</a>	Timerbar, 3/Wide 3/Display (Front and Rear)	
19	2601693	Support, Hold-down Shelf	
20	8239271	Divider, W/A, Plenum Center	
21	8239282	Air W/A, 2X3 Plenum	
√ 22	8076102	Probe, Air Heater	
23	<a href="#">2601677</a>	Left Hand Side Cover Panel	
24	8104729	Shelf, BK 3 Wide Heater	
√ 25	8076099	Heater Pad, 230V, 200W w/Thermocouple	
√ 26	8076098	Heater Pad, 230V, 100W w/Thermocouple Single	
	8076027	Board, Converter RS232/RS485	
	8076028	Cable, SUI to Converter	
	8076029	Cable, Communication Long 9.50"	
	8076030	Coupler, Female, RJ-12 Cross Wire	
	<a href="#">2186997</a>	Comm Cable 8 pin, 52" internal from Primary IO BD to Secondary IO BD (FM# <a href="#">8076017</a> )	
	<a href="#">2186998</a>	Cable, Communication Master to Display, 6-pin, 12 inch internal cable (FM PN 8076009)	
	<a href="#">2187049</a>	Cable, Data, 6 pin - 96 inch external cable from Primary PHU to Secondary PHU	
	<a href="#">2187007</a>	Cable, 12 inch, USB ext., Panel Mount Female, from IO Board to USB port (FM PN <a href="#">8076010</a> )	
	<a href="#">8076011</a>	Cable, 8-pin, SUI to Ethernet	
	8076012	Cable, 6-pin to 4-pin, <a href="#">26</a> ", Display to Timerbar	
	<a href="#">8076013</a>	Harness, AC Power, 2X4,2X3	
	8076015	Harness, DC Power, 2X4, 2X3	
	<a href="#">8076017</a>	Cable, Communication 8-pin, 52" IO to IO, Long	
	<a href="#">2186993</a>	Cord, NEMA 6-20P, 12/3 Domestic (FM PN 8076026)	
	8076028	Cable, SUI to Converter, 12", 8-pin, 4-pin, 3-pin, 2-pin	
	<a href="#">2187033</a>	Cordset, Pin/Sleeve, 16A, Export	

√ Recommended Parts

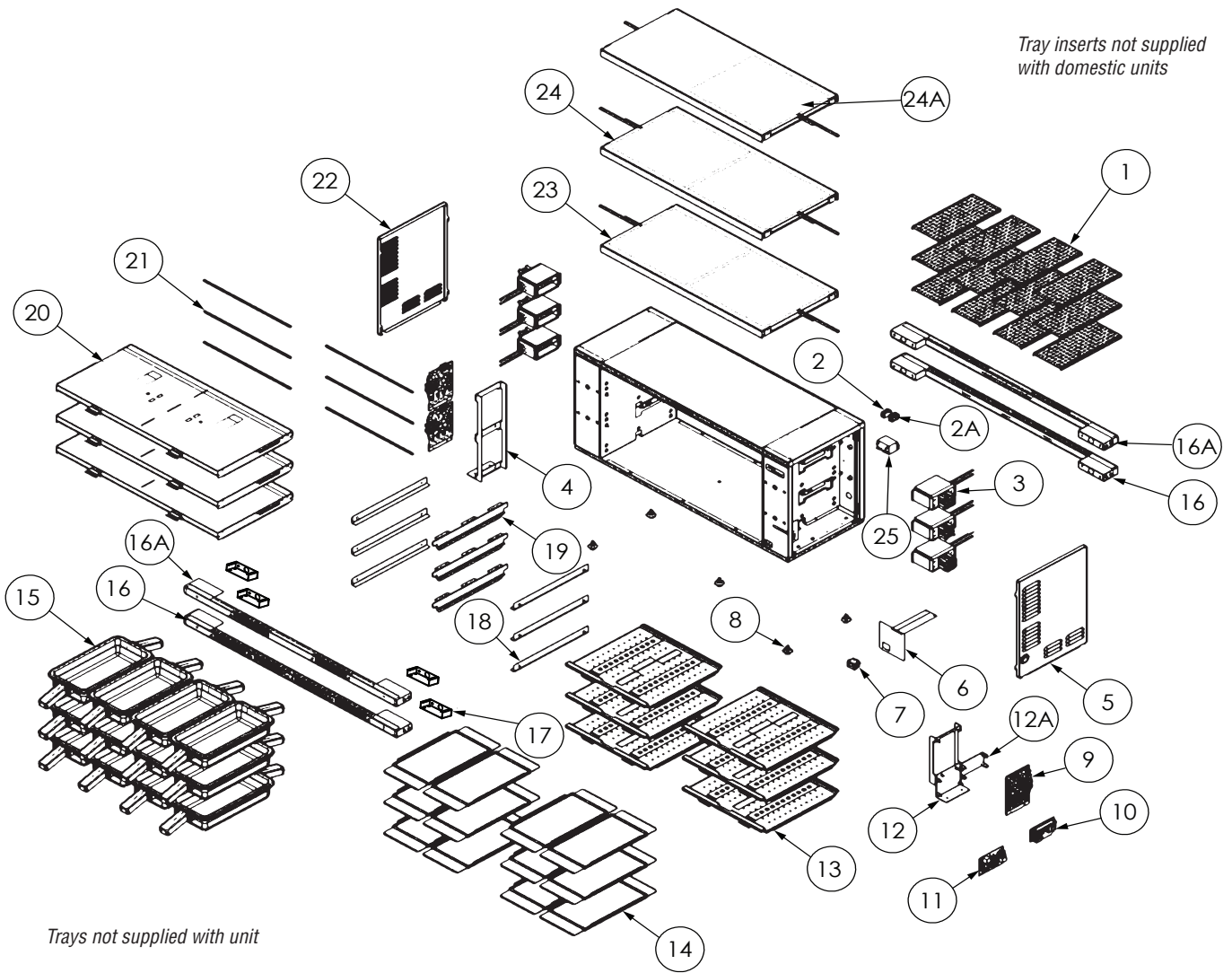
# MHB24 - Common Components



Item	Part Number	Description	Note
	1087330	Complete Cabinet Assembly (MHB24)	
1	<a href="#">MER10001682</a>	Tray Insert (FM PN 2601740)	
√	2	<a href="#">2198597</a>	Coupler, Female, RJ-12, Connects Primary PHU to Secondary PHU (FM PN 8076020)
√	2A	<a href="#">2198596</a>	Coupler, Female, RJ-45, Connects Primary PHU to Kitchen Minder (FM PN 8076019)
√	3	1087310SP	Heater Assembly, 230V, 700W, Air w/Fan (replace with 450W if voltage is greater than 230V)
√		1087290SP	Heater Assembly, 230V, 450W, Air with Fan
	4	1087272	Bracket, Single I/O Board Mount w/o SUI
	5	2601675	Right Hand Side Cover Panel
	6	8076000	Membrane Switch
√	7	8076023	Rocker Switch, 250V, 16A
	8	<a href="#">MER340011</a>	Hi Temp Leveling Mount (FM PN <a href="#">8104733</a> )
√	9	8263404	Board, I/O Merco w/ SUI (Units connected to kitchen network)
√	10	<a href="#">2195354</a>	Power Supply, 12VDC, 30W (FM PN <a href="#">8076001</a> )
√	11	8075989	Board, SUI KCCM ICC (Units connected to ICC Kitchen Minder Systems)
	12	8263406	Bracket, I/O Board w/ SUI
	12A	1087269	Bracket, Power Supply
	13	8239275	Diffuser, Air Assembly 2 Wide
	14	<a href="#">8242410</a>	Tray Seal
	15	1708578	Plastic Tray, Double Handle (FM PN <a href="#">8030491</a> )
√	16	<a href="#">8263407</a>	Timerbar, 4/Wide 4/Display Front (Single Sided Unit only)
√		8263408	Timerbar, 4/Wide 4/Display Front /Rear (Double Sided Unit only)
	17	8242417	Assembly, Timer Bar Mounting Bracket
	18	2601693	Support, Hold-down Shelf
	19	8239271	Divider, W/A, Plenum Center
	20	8239272	Air W/A, 2X4 Plenum
√	21	8076102	Probe, Air Heater
	22	<a href="#">2601677</a>	Left Hand Side Cover Panel
	23	2401563	Shelf, BK 4 Wide Heater
√	24	8076099	Heater Pad, 230V, 200W w/Thermocouple
		8076027	Board, Converter RS232/RS485
		8076028	Cable, SUI to Converter
		8076029	Cable, Communication Long 9.50"
		8076030	Coupler, Female, RJ-12 Cross Wire
		<a href="#">2186997</a>	Comm Cable 8 pin, 52" internal from Primary IO BD to Secondary IO BD (FM# <a href="#">8076017</a> )
		<a href="#">2186998</a>	Cable, Communication Master to Display, 6-pin, 12 inch internal cable (FM PN 8076009)
		<a href="#">2187049</a>	Cable, Data, 6 pin - 96 inch external cable from Primary PHU to Secondary PHU
		<a href="#">2187007</a>	Cable, 12 inch, USB ext., Panel Mount Female, from IO Board to USB port (FM PN <a href="#">8076010</a> )
		<a href="#">8076011</a>	Cable, 8-pin, SUI to Ethernet
		8076012	Cable, 6-pin to 4-pin, <a href="#">26"</a> , Display to Timerbar
		<a href="#">8076013</a>	Harness, AC Power, 2X4,2X3
		8076015	Harness, DC Power, 2X4, 2X3
		<a href="#">8076017</a>	Cable, Communication 8-pin, 52" IO to IO, Long
		<a href="#">2186993</a>	Cord, NEMA 6-20P, 12/3 Domestic (FM PN 8076026)
		8076028	Cable, SUI to Converter, 12", 8-pin, 4-pin, 3-pin, 2-pin
		<a href="#">2187033</a>	Cordset, Pin/Sleeve, 16A, Export

√ Recommended Parts

# MHB34 - Common Components



Item	Part Number	Description	Note
	1087331	Complete Cabinet Assembly (MHB34)	
1	<a href="#">MER10001682</a>	Tray Insert (FM PN 2601740)	
√	2	<a href="#">2198597</a>	Coupler, Female, RJ-12, Connects Primary PHU to Secondary PHU (FM PN 8076020)
√	2A	<a href="#">2198596</a>	Coupler, Female, RJ-45, Connects Primary PHU to Kitchen Minder (FM PN 8076019)
√	3	1087290SP	Heater Assembly, 230V, 450W, Air with Fan
	4	2401547	Bracket, Double I/O Board Mount
	5	2601676	Right Hand Side Cover Panel
	6	8076000	Membrane Switch
√	7	8076023	Rocker Switch, 250V, 16A
	8	<a href="#">MER340011</a>	Hi Temp Leveling Mount (FM PN <a href="#">8104733</a> )
√	9	8263404	Board, I/O Merco w/ SUI (Units connected to kitchen network)
√	10	<a href="#">2195354</a>	Power Supply, 12VDC, 30W (FM PN <a href="#">8076001</a> )
√	11	8263406	Board, SUI Merco PHU
	12	1087268	Bracket, I/O Board w/ SUI
	12A	1087269	Bracket, Power Supply
	13	8239275	Diffuser, Air Assembly 2 Wide
	14	<a href="#">8242410</a>	Tray Seal
	15	1708578	Plastic Tray, Double Handle (FM PN <a href="#">8030491</a> )
√	16	<a href="#">8263407</a>	Timerbar, 4/Wide 4/Display Front Lower (Single Sided Unit only)
√		8263408	Timerbar, 4/Wide 4/Display Front /Rear Lower (Double Sided Unit only)
√	16A	8263409	Timerbar, 4/Wide 2/Display Front /Rear Upper (Single and Double Sided Unit)
	17	8242417	Assembly, Timer Bar Mounting Bracket
	18	2601693	Support, Hold-down Shelf
	19	8239271	Divider, W/A, Plenum Center
	20	8239272	Air W/A, 2X4 Plenum
√	21	8076102	Probe, Air Heater
	22	2601678	Left Hand Side Cover Panel
	23	2401563	Shelf, BK 4 Wide Heater
√	24	8076099	Heater Pad, 230V, 200W w/Thermocouple Kit
√	24A	8076101	Heater Pad, 230V, 200W w/Thermocouple Kit with Long Thermocouple for Zone #6
√	25	8076038	Relay, Power Heavy Duty 200-240VAC
		8076027	Board, Converter RS232/RS485
		8076028	Cable, SUI to Converter
		8076029	Cable, Communication Long 9.50"
		8076030	Coupler, Female, RJ-12 Cross Wire
		<a href="#">2186997</a>	Comm Cable 8 pin, 52" internal from Primary IO BD to Secondary IO BD (FM# <a href="#">8076017</a> )
		<a href="#">2186998</a>	Cable, Communication Master to Display, 6-pin, 12 inch internal cable (FM PN 8076009)
		<a href="#">2187049</a>	Cable, Data, 6 pin - 96 inch external cable from Primary PHU to Secondary PHU
		<a href="#">2187007</a>	Cable, 12 inch, USB ext., Panel Mount Female, from IO Board to USB port (FM PN <a href="#">8076010</a> )
		<a href="#">8076011</a>	Cable, 8-pin, SUI to Ethernet
		8076012	Cable, 6-pin to 4-pin, <a href="#">26</a> ", Display to Timerbar
		8076014	Harness, AC Power, 3X4
		8076016	Harness, DC Power, 3X4
		<a href="#">8076017</a>	Cable, Communication 8-pin, 52" IO to IO, Long
		<a href="#">2186993</a>	Cord, NEMA 6-20P, 12/3 Domestic (FM PN 8076026)

√ Recommended Parts

## ICC Replacement Parts

---

If these parts are needed call ICC Tech Division 631-673-5100 or 877-422-8788.

Description	ICC Part Number
Merco Translator Adapter	980198-20

THIS PAGE INTENTIONALLY LEFT BLANK



MERCO  
8700 LINE AVENUE, SHREVEPORT, LA 71106-6800

877-392-7770  
WWW.MERCOPRODUCTS.COM

Every new piece of Welbilt equipment comes with KitchenCare™ and you choose the level of service that meets your operational needs from one restaurant to multiple locations.

**StarCare** – Warranty & lifetime service, certified OEM parts, global parts inventory, performance audited

**ExtraCare** — CareCode, 24/7 Support, online/mobile product information

**LifeCare** – Install & equipment orientation, planned maintenance, KitchenConnect™, MenuConnect

To learn how Welbilt and its leading brands can equip you, visit our global web site at [www.welbilt.com](http://www.welbilt.com), then discover the regional or local resources available to you.

