

# Service Manual

Precision Facial Hair Trimmer

Model No. **ES-WD94**

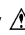
North America



## **WARNING**

This service information is designed for experienced repair technicians only and is not designed for use by the general public. It does not contain warnings or cautions to advise non-technical individuals of potential dangers in attempting to service a product. Products powered by electricity should be serviced or repaired only by experienced professional technicians. Any attempt to service or repair the product or products dealt with in this service information by anyone else could result in serious injury or death.

## **IMPORTANT SAFETY NOTICE**

There are special components used in this equipment which are important for safety. These parts are marked by  in the Schematic Diagrams, Circuit Board Diagrams, Exploded Views and Replacement Parts List. It is essential that these critical parts should be replaced with manufacturer's specified parts to prevent shock, fire or other hazards. Do not modify the original design without permission of manufacturer.

## TABLE OF CONTENTS

	PAGE	PAGE
1 Warning-----	2	
2 Specifications -----	2	
3 Exploded View and Replacement Parts List -----	3	

# 1 Warning

## Caution:

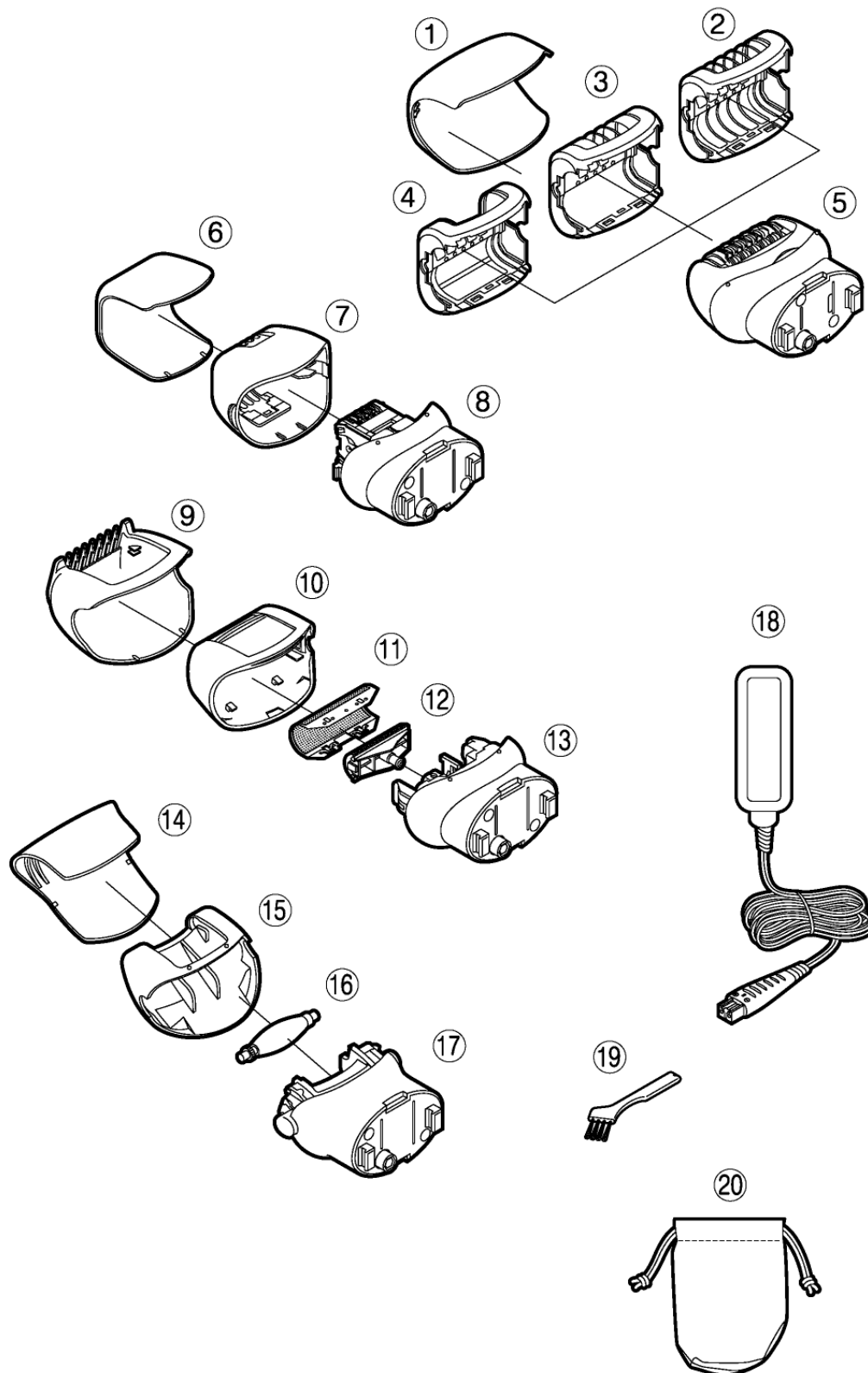
- Pb free solder has a higher melting point than standard solder; Typically the melting point is 50 - 70°F (30 - 40°C) higher. Please use a soldering iron with temperature control and adjust it to 750 ± 20°F (400 ± 10°C). In case of using high temperature soldering iron, please be careful not to heat too long.
- Pb free solder will tend to splash when heated too high (about 1100°F / 600°C).

# 2 Specifications

Power source	100-240V AC, 50-60Hz (Automatic voltage conversion)
Charging time	1 hour
Power consumption	Approx. 5W (when charging)
Weight	Approx. 170g with the shaver head
Supplied accessories	Soft case
	Cleaning brush

# 3 Exploded View and Replacement Parts List

Model No. : ES-WD94 Exploded View



## Model No. : ES-WD94 Parts List

Safety	Ref. No.	Part No.	Part Name & Description	Q'ty	Remarks
	1	WESWD51X7157	PROTECTION CAP	1	
	2	WESWD88P3107	GENTLE CAP	1	
	3	WESWD72P3118	BEGINNER CAP	1	
	4	WESWD94P3128	FAST CAP	1	
	5	WESWD92W1068	EPILATION HEAD FOR LEGS/ARMS	1	
	6	WESWD70X7158	PROTECTION CAP	1	
	7	WESWD92W3128	EPILATION HEAD FRAME	1	
	8	WESWD92W1078	EPILATION HEAD FOR UNDERARMS	1	
	9	WESWD51X3557	BIKINI COMB	1	
	10	WESWD92W4038	FOIL FRAME	1	
	11	WES9753P	OUTER FOIL	1	
	12	WES9752P	INNER BLADE	1	
	13	WESWD51W0787	SHAVER HEAD	1	
	14	WESWD92X7158	PROTECTION CAP	1	
	15	WESWD92W3138	FOOT CARE HEAD FRAME	1	
	16	WESWD92H7178	FILE	1	
	17	WESWD92W4068	FILE HEAD	1	
	18	WESWD51W7658	POWER ADAPTOR	1	A-2 PLUG
	19	WES2047H6767	CLEANING BRUSH	1	
	20	WESWU41W7008	SOFT CASE	1	
	-	WESWD94P8000	INDIVIDUAL BOX	1	
	-	WESWD94P8100	OPERATING INSTRUCTIONS	1	