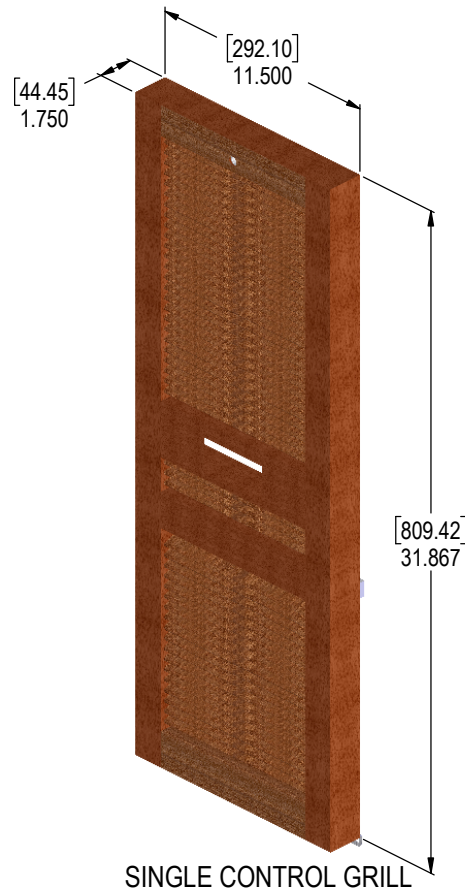
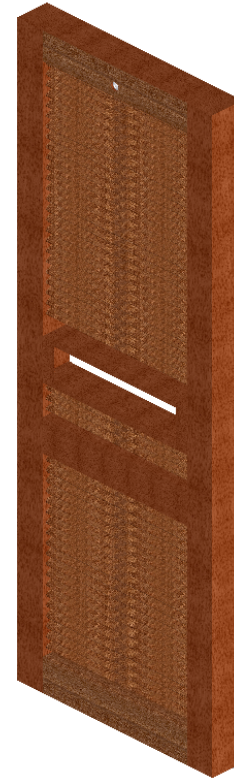


WOOD GRILLS FOR BBS & PTS SERIES BACK BARS



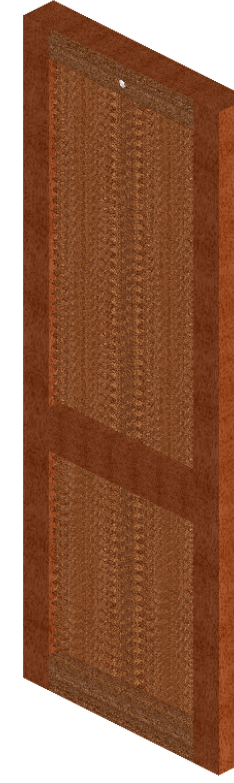
SINGLE CONTROL GRILL

SEE SHEETS 2 THRU 4 FOR ASSEMBLY DETAILS



DUAL CONTROL GRILL

SEE SHEETS 5 THRU 7 FOR ASSEMBLY DETAILS



PASS THROUGH REAR GRILL

SEE SHEETS 8 THRU 10 FOR ASSEMBLY DETAILS

**MODELS: BBS
BBSN
DDC
DDS
SDBS SERIES**

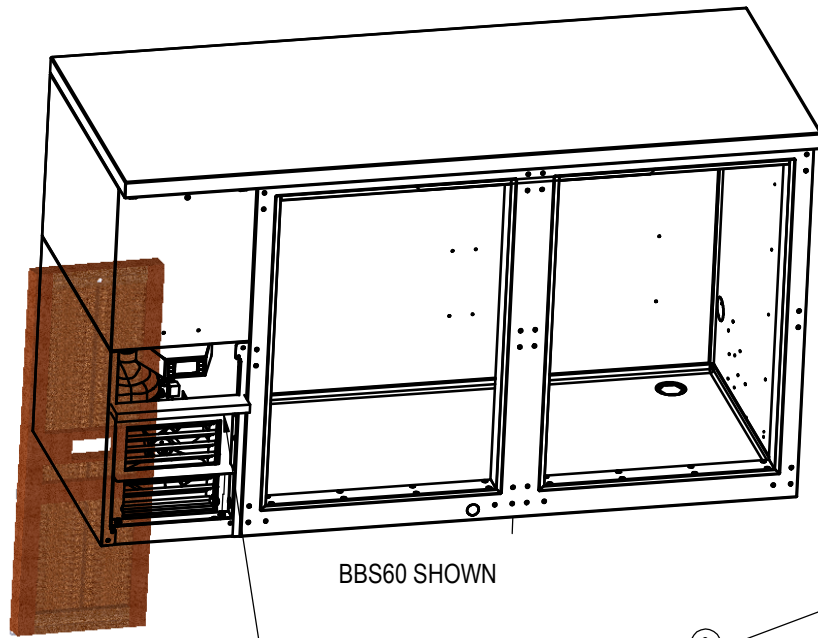
MODEL: DZS60

**MODELS: PTS SERIES
SDPS60**

REVISED SINGLE CONTROL GRILL FOR CLEARANCE AROUND CONTROL	
B	9/26/2017 JMP
RELEASE FOR PRODUCTION	
A	7/16/2013 CJT
REVISIONS	

UNLESS OTHERWISE SPECIFIED: DIMENSIONS ARE IN INCHES TOLERANCES: XX ± .01 XX ± .03 XX ± .05 ANGULAR ± 1° FRACTIONS ± 1/64 BREAK SHARP EDGES: .015 X .45° RADIUS SHARP FILLETS: .015 TO .031		SIGNATURES DESIGNED CJT DRAWN CJT CHECKED	DATE 7/16/2013 7/16/2013	Perlick Corporation Milwaukee, Wisconsin TITLE: WOOD GRILL BACK BAR, COMPRESSOR UNIT	
MATERIAL:	QTY.:	FINISH:	REFERENCE: PART NO. KIT 67893-1	DWG NO. 67893	SCALE = 1:4
PURCHASE REC.:			SHEET 1 OF 10		

FRONT GRILL, WITH SINGLE CONTROL FOR: BBS, BBSN, DDC, DDS, SDBS SERIES

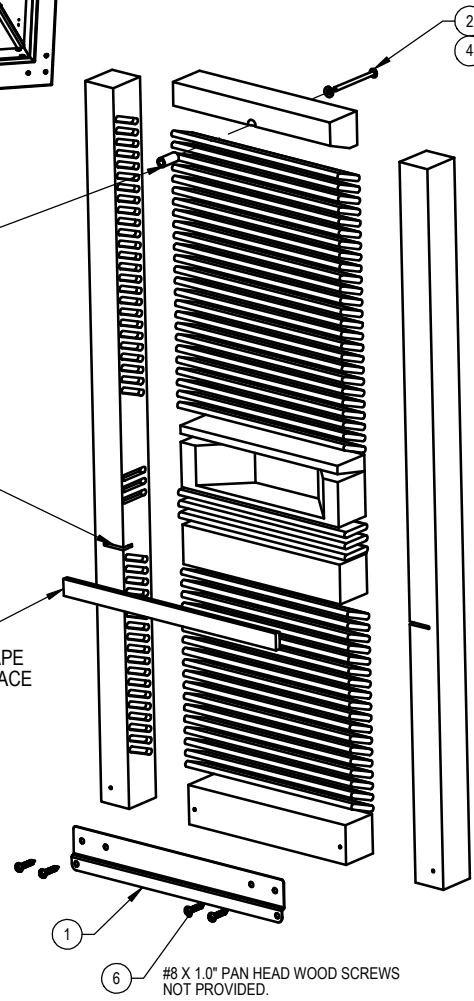


BBS60 SHOWN

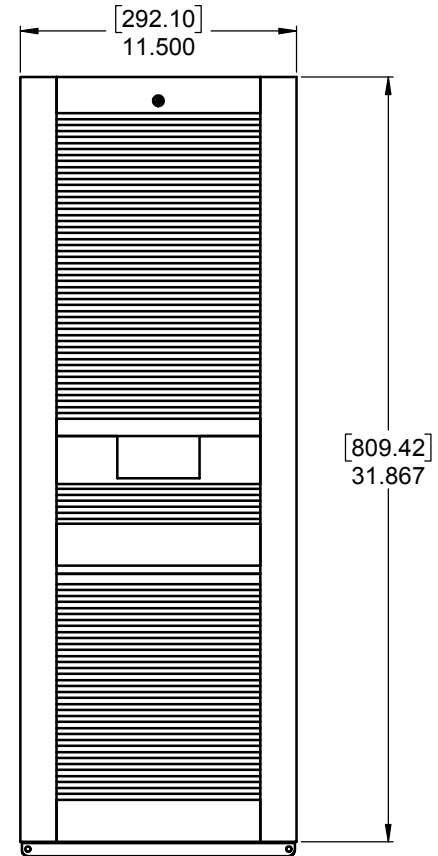
RE-USE SCREWS FROM SHEET METAL GRILL

SLOTS PER DETAIL B (SHEET 4) TO CLEAR FLANGE OF DRIP PAN

ALING BOTTOM EDGE OF TAPE TO BOTTOM OF CENTER BRACE



REAR VIEW

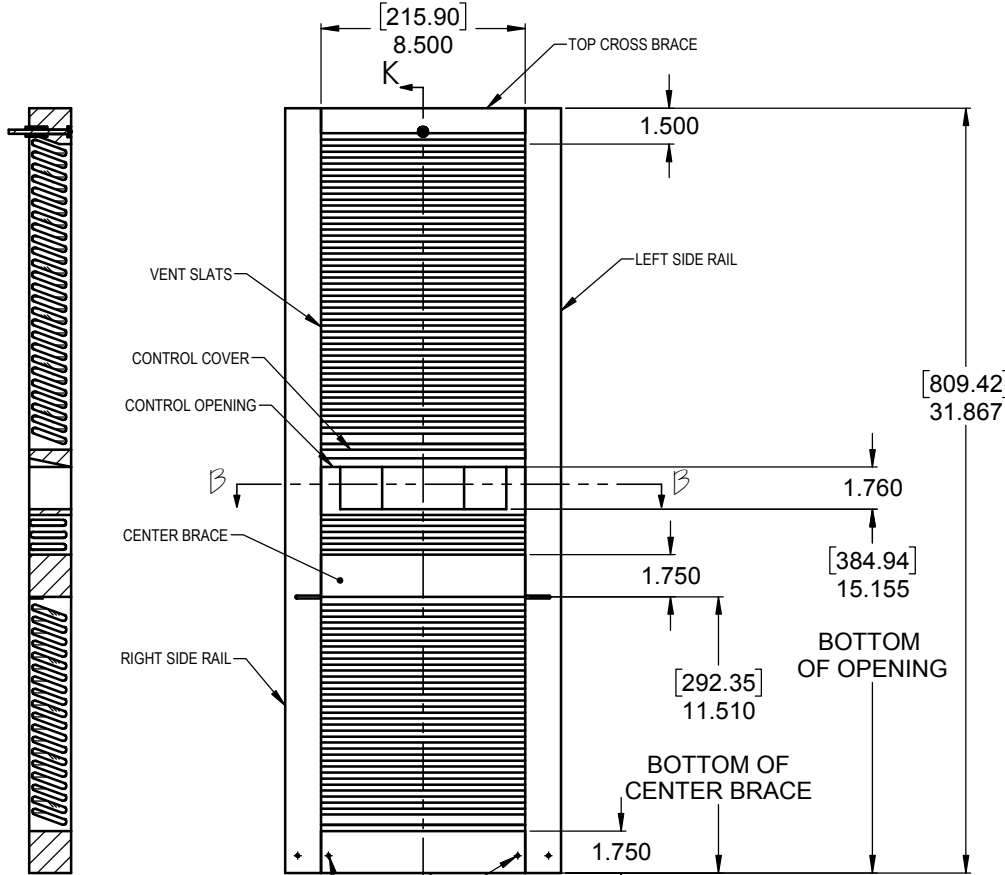
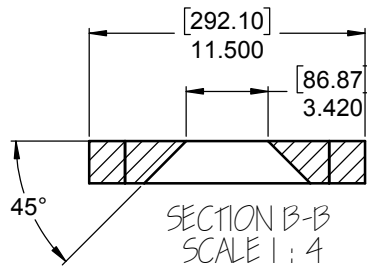


ITEM NO.	PART NUMBER	DESCRIPTION	QTY.
1	65861-1	WOOD GRILL MOUNTING BRACKET	1
2	M00502-135	Screw, Machine, #8-32 x 2-1/2" Lg, Phillips Truss Head	1
3	67688-2	STAND-OFF, WOOD GRILL	1
4	M00600-080	WASHER, FLAT, #8, TYPE 302SS	1
5	63825-12	FOAM TAPE (12")	1

UNLESS OTHERWISE SPECIFIED: DIMENSIONS ARE IN INCHES TOLERANCES: XX ± .03 XXX ± .025 ANGULAR ± 15° FRACTIONS ± 1/64 BREAK SHARP EDGES: .015 X 45° RADIUS SHARP FILLETS: .015 TO .031		SIGNATURES DESIGNED CJT 7/16/2013 DRAWN CJT 8/7/2013 CHECKED 8/7/2013	DATE 7/16/2013 8/7/2013 8/7/2013	Perlick Corporation Milwaukee, Wisconsin WOOD GRILL, SINGLE CONTROL ASSEMBLY
MATERIAL: SEE BILL OF MATERIALS		QTY. FINISH:	REFERENCE: PART NO. KIT 67893-1 PURCHASE REC.: NO	
		DWG NO. 67893		SCALE = 1:4 SHEET 2 OF 10

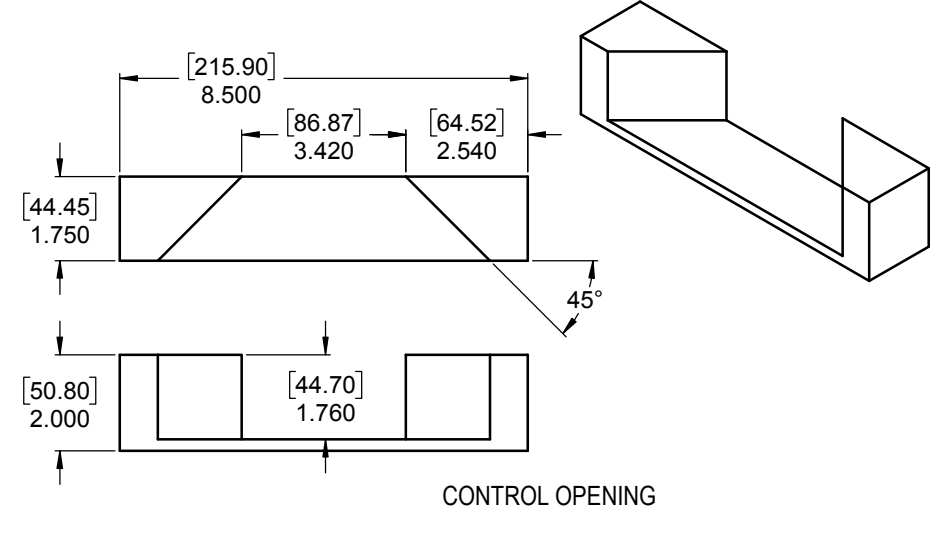
REVISED SINGLE CONTROL GRILL FOR CLEARANCE AROUND CONTROL	
B	9/26/2017 JMP
RELEASED KIT	
A	8/7/2013 CJT
REVISIONS	

FRONT GRILL, WITH SINGLE CONTROL FOR: BBS, BBSN, DDC, DDS, SDBS SERIES

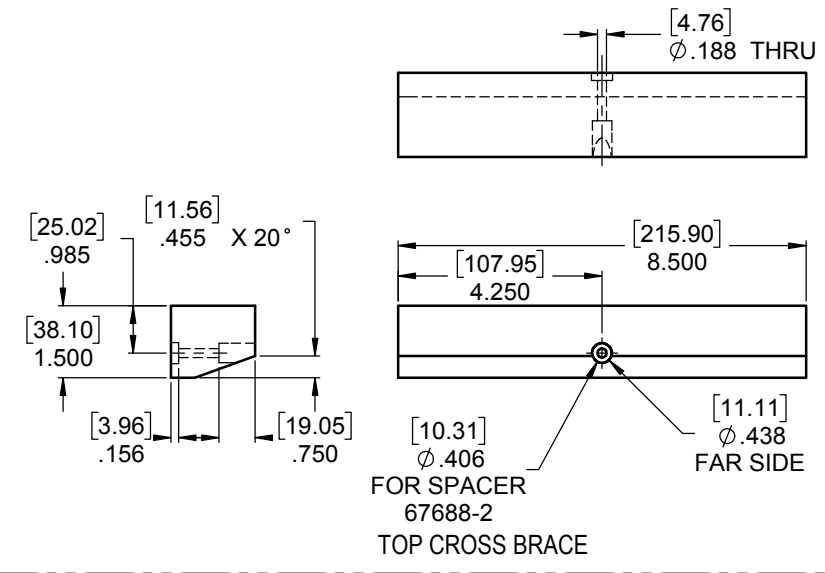


USE SHEET METAL BRACKET AS TEMPLATE TO DRILL 7/64" X 3/4" DEEP HOLES. SCALE 1:4

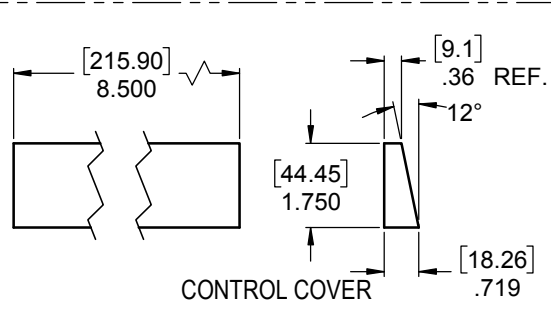
REAR VIEW



CONTROL OPENING



FOR SPACER 67688-2 TOP CROSS BRACE

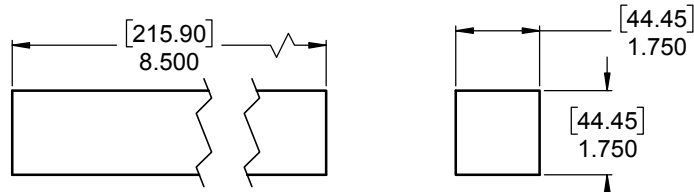


CONTROL COVER

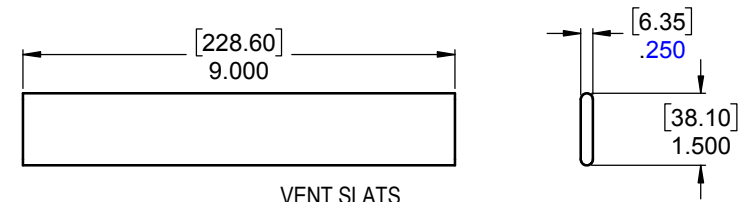
REVISED SINGLE CONTROL GRILL FOR CLEARANCE AROUND CONTROL	
B	9/26/2017 JMP
RELEASE FOR PRODUCTION	
A	7/16/2013 CJT
REVISIONS	

UNLESS OTHERWISE SPECIFIED: DIMENSIONS ARE IN INCHES TOLERANCES: XX ± .03 XXX ± .025 ANGULAR ± 15°, FRACTIONS ± 1/64 BREAK SHARP EDGES: .015 X .45° RADIUS SHARP FILLETS: .015 TO .031		SIGNATURES	DATE	Perlick Corporation Milwaukee, Wisconsin WOOD GRILL, SINGLE CONTROL DETAILS
DESIGNED	CJT	7/16/2013	TITLE:	
DRAWN	CJT	7/16/2013	CHECKED:	
MATERIAL:	QTY:	FINISH:	REFERENCE:	PART NO. KIT 67893-1
			PURCHASE REC.:	DWG NO. 67893
			SCALE = NOTED	SHEET 3 OF 10

FRONT GRILL, WITH SINGLE CONTROL FOR: BBS, BBSN, DDC, DDS, SDBS SERIES

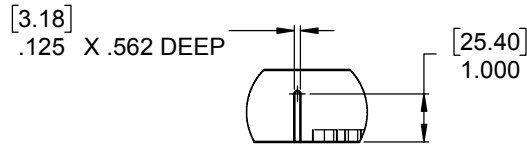


CENTER AND BOTTOM BRACE



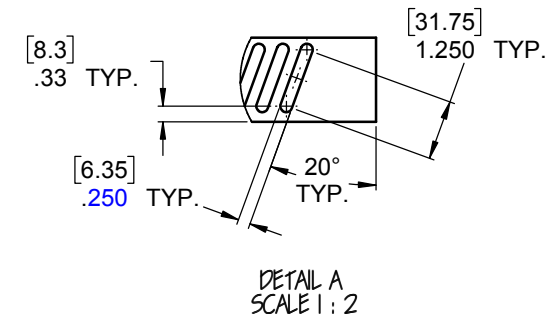
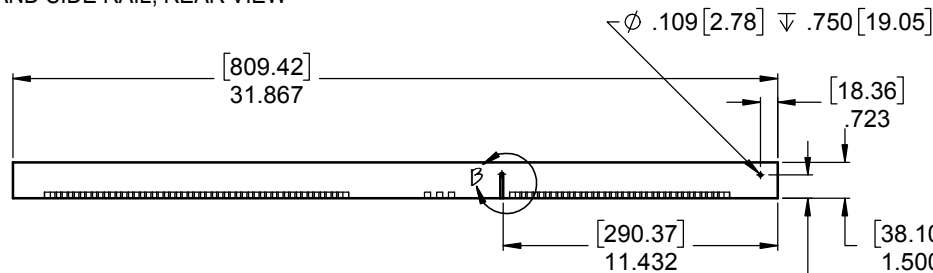
VENT SLATS

47 REQ'D.



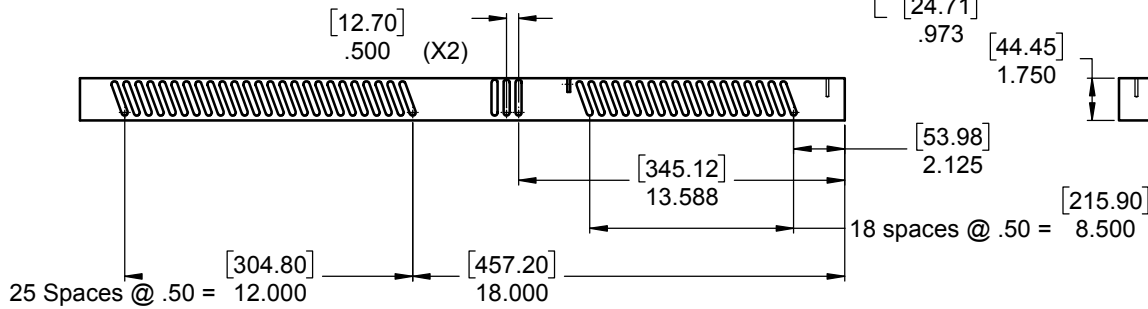
DETAIL B
SCALE 1 : 2

LEFT HAND SIDE RAIL, REAR VIEW



DETAIL A
SCALE 1 : 2

RIGHT HAND SIDE RAIL, FOR SINGLE CONTROL GRILL

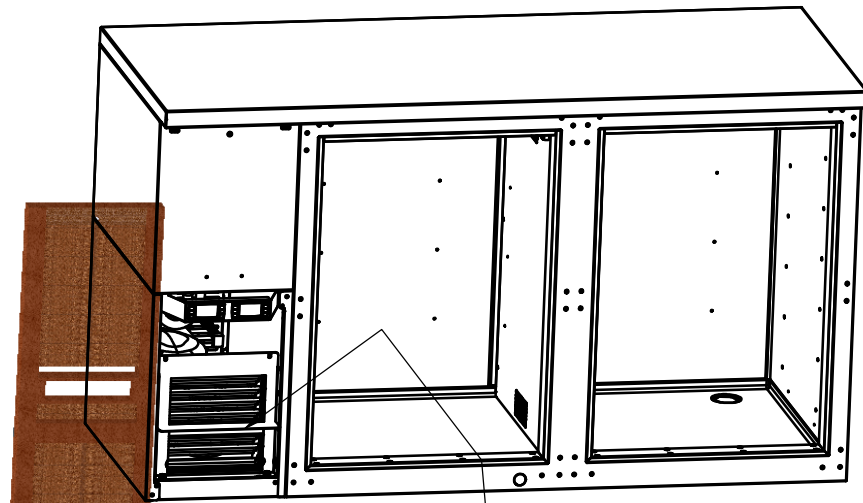


LEFT HAND SIDE RAIL, FOR SINGLE CONTROL GRILL

REVISED SINGLE CONTROL GRILL FOR CLEARANCE AROUND CONTROL	
B	9/26/2017 JMP
RELEASE FOR PRODUCTION	
A	7/16/2013 CJT
REVISIONS	

UNLESS OTHERWISE SPECIFIED: DIMENSIONS ARE IN INCHES TOLERANCES: XX ± .03 XXX ± .05 ANGULAR ± 15° FRACTIONS ± 1/64 BREAK SHARP EDGES: .015 X .45° RADIUS SHARP FILLETS: .015 TO .031		SIGNATURES	DATE	Perlick Corporation Milwaukee, Wisconsin	
DESIGNED	CJT	7/15/2013	TITLE: SIDE RAIL WOOD GRILL		
DRAWN	CJT	7/16/2013	PART NO. KIT 67893-1		
CHECKED			DWG NO. 67893		
MATERIAL: CUSTOMER SPECIFIED WOOD SPECIES		QTY.:	REFERENCE: PURCHASE REC.:		
		FINISH:	SCALE = 1:4		
			SHEET 4 OF 10		

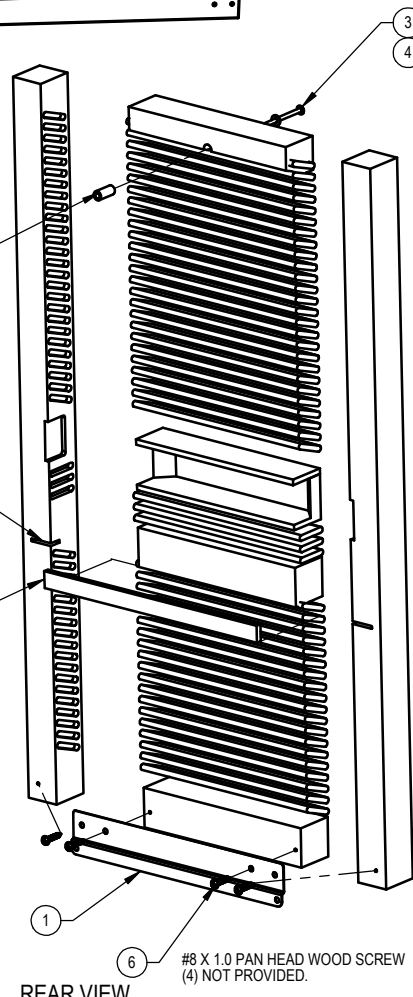
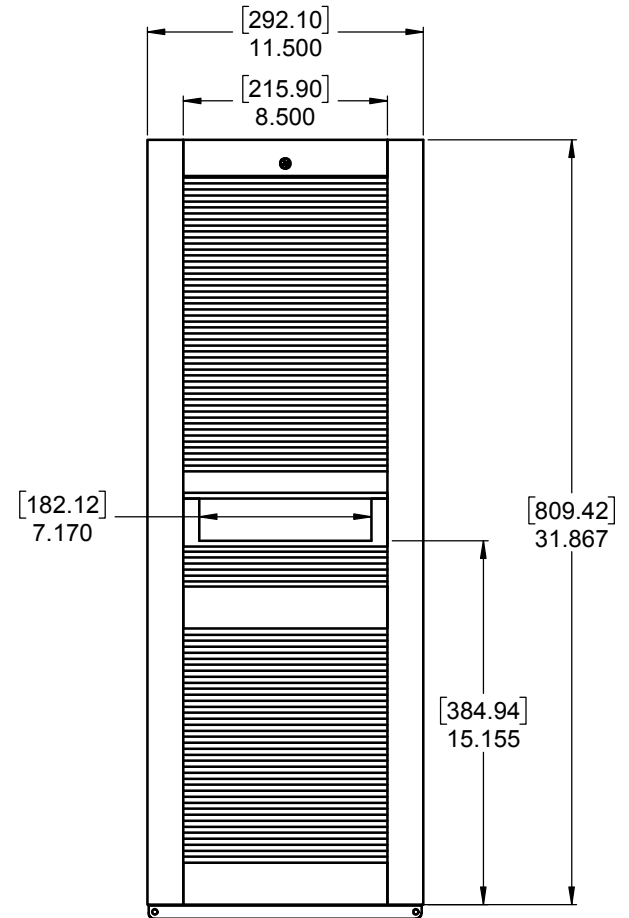
FRONT GRILL WITH DUAL CONTROLS FOR DZS60 BACK BAR



RE-USE SCREWS FROM SHEET METAL GRILL

SLOT PER DETAIL B (SHEET 7) TO CLEAR DRIP PAN FLANGE

ALING BOTTOM EDGE OF TAPE TO BOTTOM OF CENTER BRACE



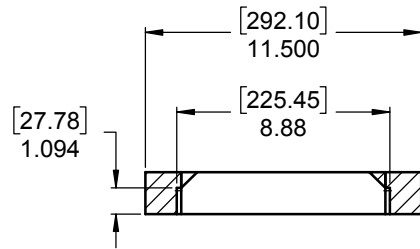
REAR VIEW

ITEM NO.	PART NUMBER	DESCRIPTION	QTY.
1	65861-1	WOOD GRILL MOUNTING BRACKET	1
2	67688-2	STAND-OFF, WOOD GRILL	1
3	M00502-135	Screw, Machine, #8-32 x 2-1/2" Lg, Phillips Truss Head	1
4	M00600-080	WASHER, FLAT, #8, TYPE 302SS	1
5	63825-12	FOAM TAPE (12.0")	1

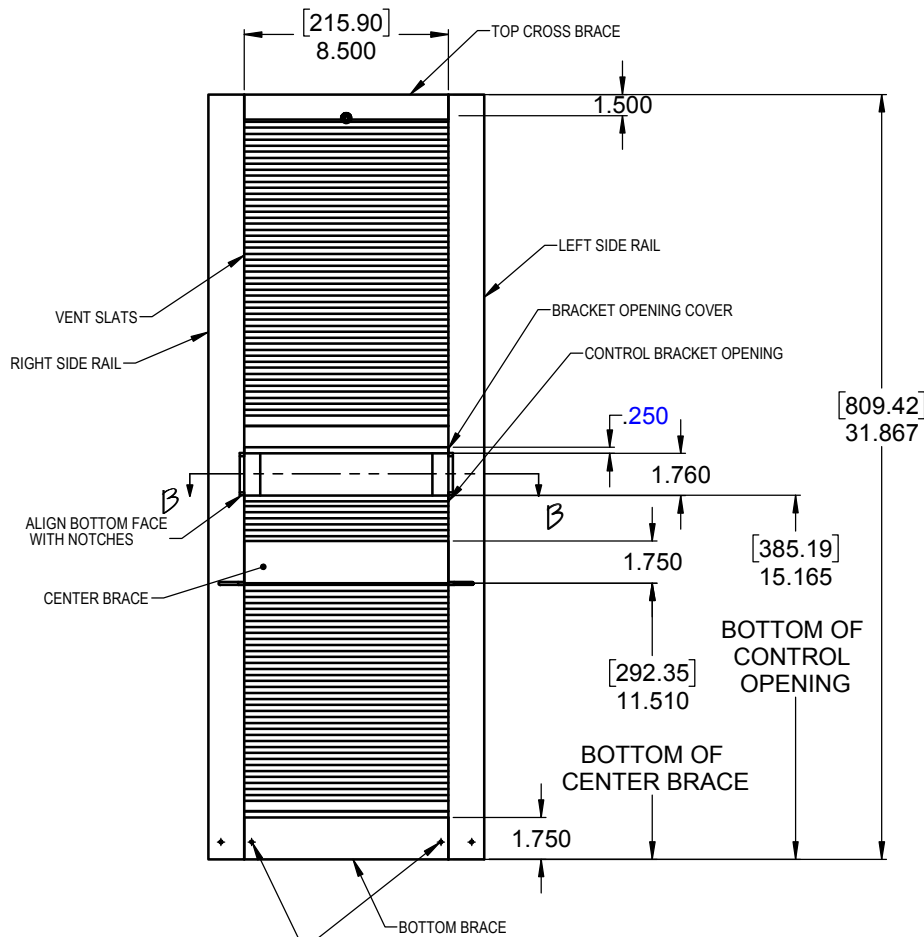
UNLESS OTHERWISE SPECIFIED: DIMENSIONS ARE IN INCHES (MM) TOLERANCES: XX ± .03 XXX ± .05 ANGULAR ± 15°, FRACTIONS ± 1/64 BREAK SHARP EDGES: .015 X .45° RADIUS SHARP FILLETS: .015 TO .031		SIGNATURES DESIGNED CJT DRAWN CJT CHECKED	DATE 7/16/2013 7/16/2013	Perlick Corporation Milwaukee, Wisconsin WOOD GRILL, DUAL ZONE ASSEMBLY
MATERIAL: SEE BILL OF MATERIAL	QTY: FINISH:	REFERENCE: PART NO. KIT 67893-1 PURCHASE REC.:	DWG NO. 67893 SCALE = 1:12	
REVISIONS B 9/26/2017 JMP RELEASE FOR PRODUCTION A 8/8/2013 CJT				

THIS DOCUMENT / PUBLICATION / SOFTWARE / DRAWING CONTAINS PROPRIETARY INFORMATION WHICH IS THE PROPERTY OF THE PERLICK CORPORATION. IT MAY NOT BE REPRODUCED OR TRANSMITTED IN ANY FORM, ELECTRONIC OR MECHANICAL, INCLUDING PHOTOCOPYING, RECORDING, OR USED IN ANY INFORMATION STORAGE, TRANSMISSION, OR RETRIEVAL SYSTEM, WITHOUT WRITTEN PERMISSION FROM THE PERLICK CORPORATION. COPYRIGHT 2004 PERLICK CORPORATION. ALL RIGHTS RESERVED.

FRONT GRILL WITH DUAL CONTROLS FOR DZS60 BACK BAR

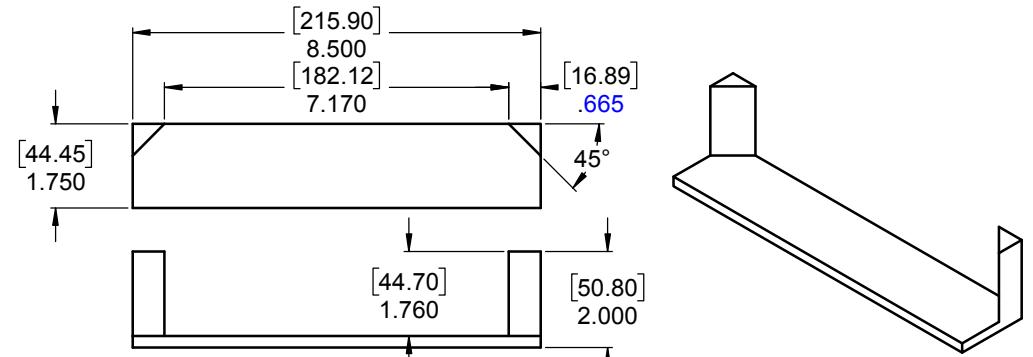


SECTION B-B

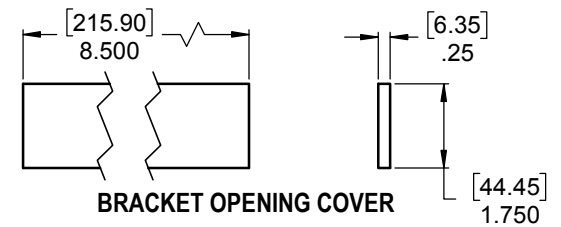


REAR VIEW

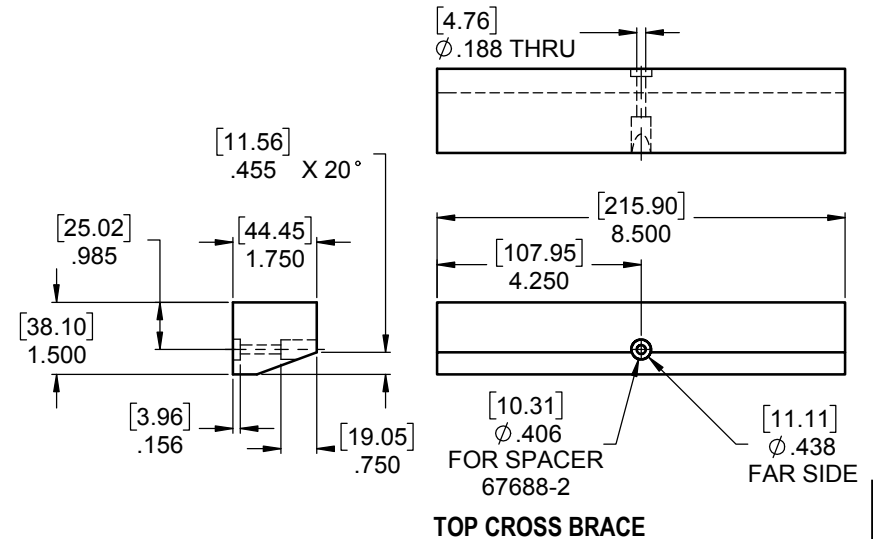
USE SHEET METAL BRACKET AS TEMPLATE TO DRILL 7/64" X 3/4" DEEP HOLES.



CONTROL BRACKET OPENING



BRACKET OPENING COVER

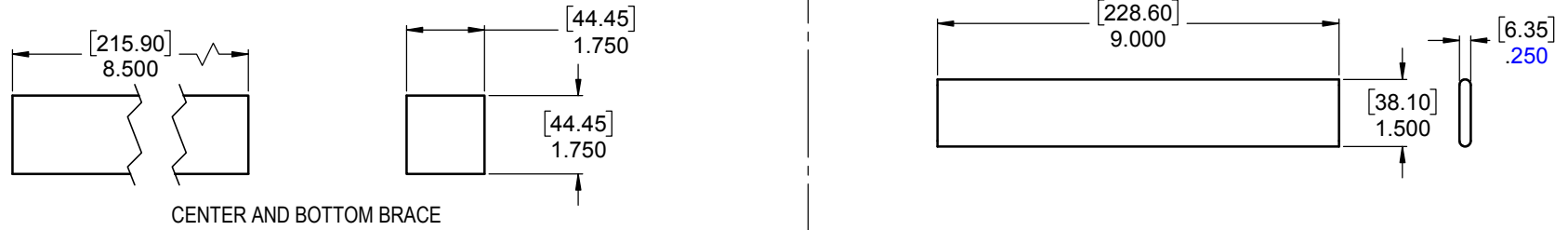


TOP CROSS BRACE

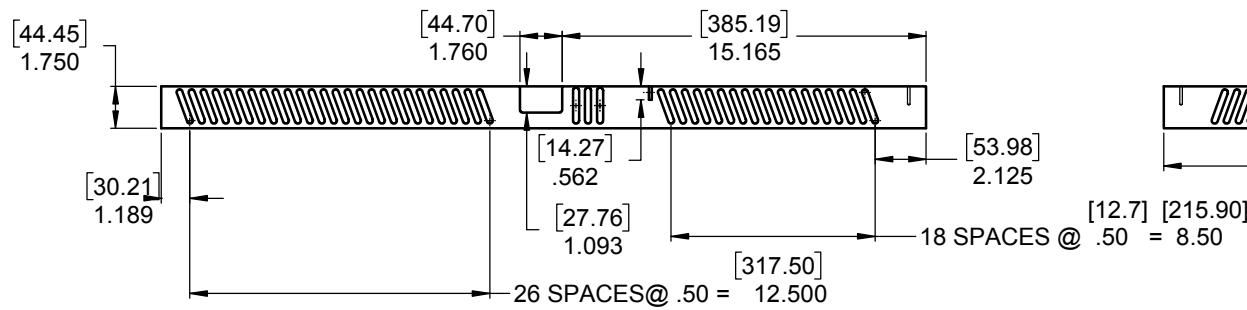
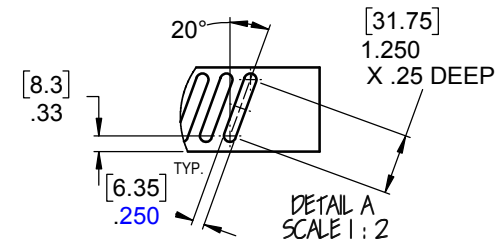
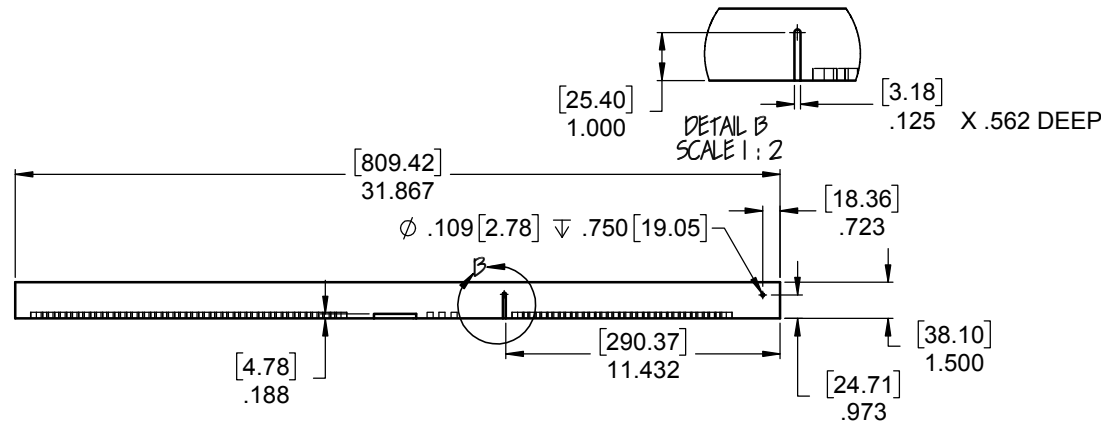
REVISED SINGLE CONTROL GRILL FOR CLEARANCE AROUND CONTROL	
B	9/26/2017 JMP
SHEET ADDED	
A	8/7/2013 CJT
REVISIONS	

UNLESS OTHERWISE SPECIFIED: DIMENSIONS ARE IN INCHES TOLERANCES: XX ± .01 XXX ± .05 XXX ± .05 ANGULAR ± 15° FRACTIONS ± 1/64 BREAK SHARP EDGES: .015 X .40" RADIUS SHARP FILLETS: .015 TO .031		SIGNATURES DESIGNED CJT DRAWN CJT CHECKED	DATE 7/16/2013 7/16/2013	Perlick Corporation Milwaukee, Wisconsin TITLE: WOOD GRILL DETAILS DUAL ZONE
MATERIAL:	QTY:	FINISH:	REFERENCE: PART NO. KIT 67893-1 PURCHASE REC.:	
			DWG NO. 67893	SCALE: 1:4
			SHEET 6 OF 10	

FRONT GRILL WITH DUAL CONTROLS FOR DZS60 BACK BAR



CENTER AND BOTTOM BRACE



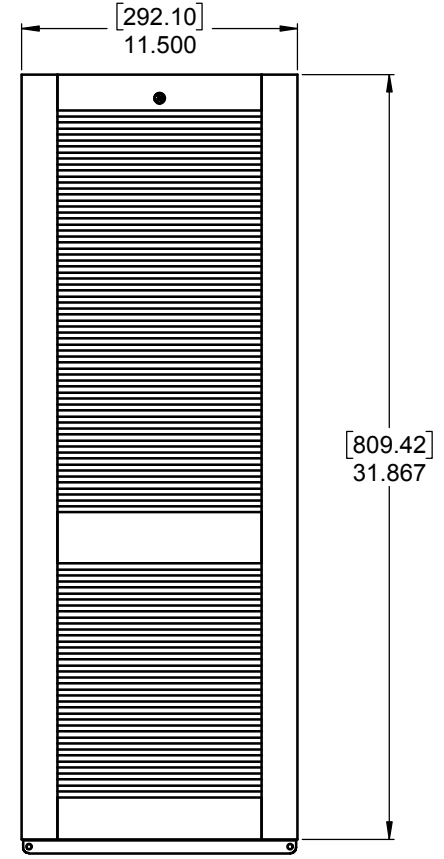
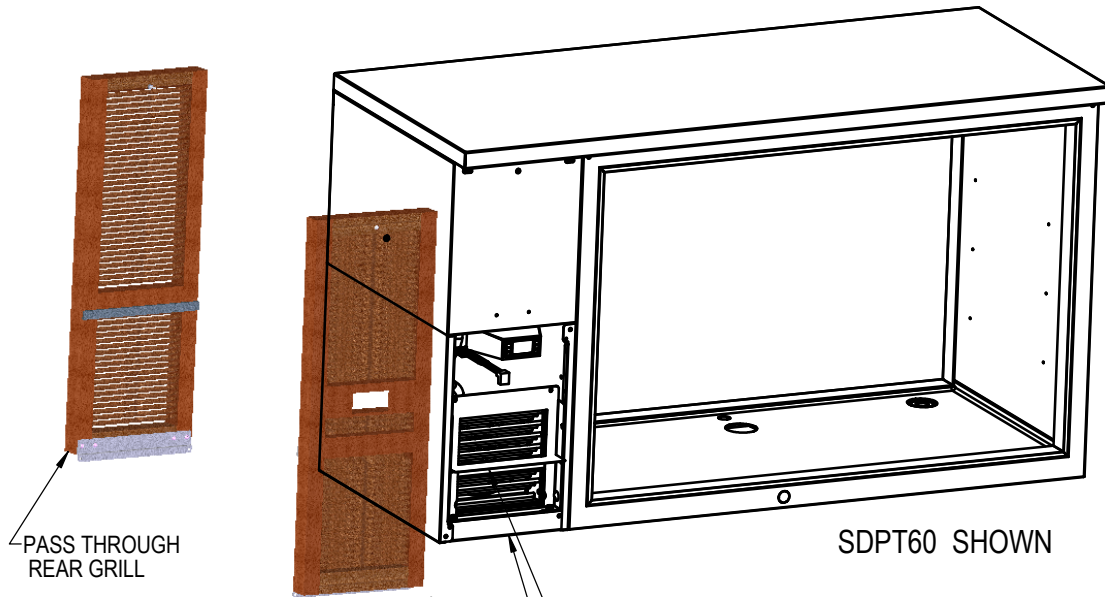
LEFT HAND SIDE RAIL

RIGHT HAND SIDE RAIL

REVISED SINGLE CONTROL GRILL FOR CLEARANCE AROUND CONTROL	
B	9/26/2017 JMP
SHEET ADDED	
A	8/7/2013 CJT
REVISIONS	

UNLESS OTHERWISE SPECIFIED: DIMENSIONS ARE IN INCHES (MM) TOLERANCES: XX ± .01 XXX ± .005 ANGULAR ± 15° FRACTIONS ± 1/64 BREAK SHARP EDGES - .015 X .45° RADIUS SHARP FILLETS - .015 TO .031		SIGNATURES	DATE	Perlick Corporation Milwaukee, Wisconsin WOOD GRILL, DUAL ZONE GRILL DETAILS
DESIGNED		CJT	7/15/2013	
DRAWN		CJT	7/16/2013	
CHECKED				REFERENCE:
MATERIAL:		QTY.:		PART NO.:
FINISH:		REFERENCE:		DWG NO.:
		PURCHASE REC.:		SCALE = 1:4
				SHEET 7 OF 10

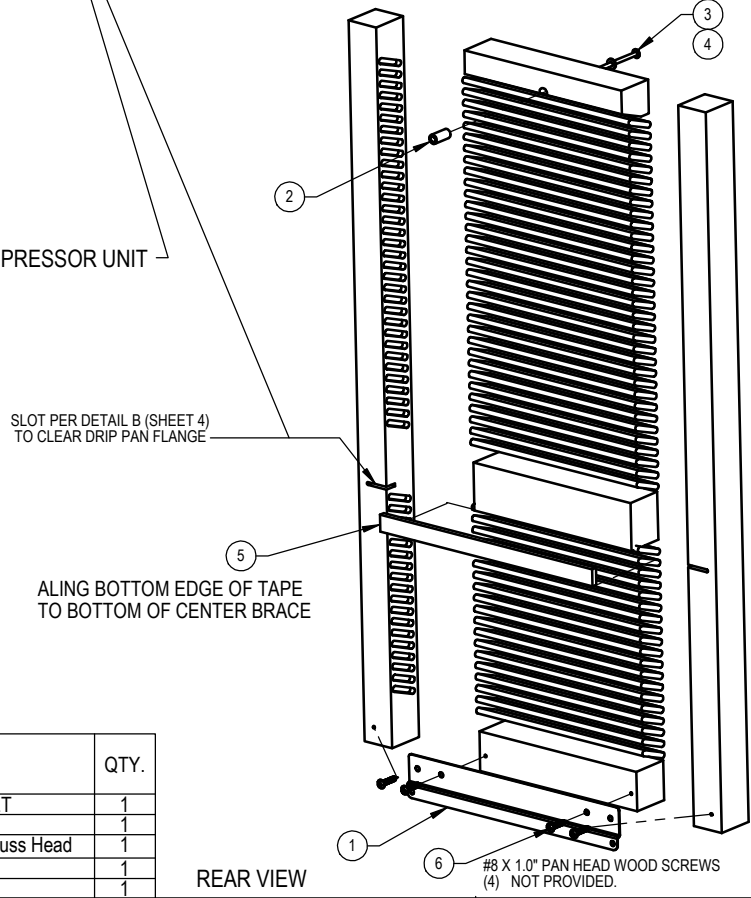
MODEL NUMBERS: PTS SERIES SDPT SERIES



PASS THROUGH REAR GRILL
FOR GRILL DETAILS SEE SHEETS 3 & 4

FOR SINGLE CONTROL GRILL DETAILS SEE SHEETS 5 THRU 7

REVISED SINGLE CONTROL GRILL FOR CLEARANCE AROUND CONTROL
B 9/26/2017 JMP
RELEASED P/N
A 7/16/2013 CJT
REVISIONS

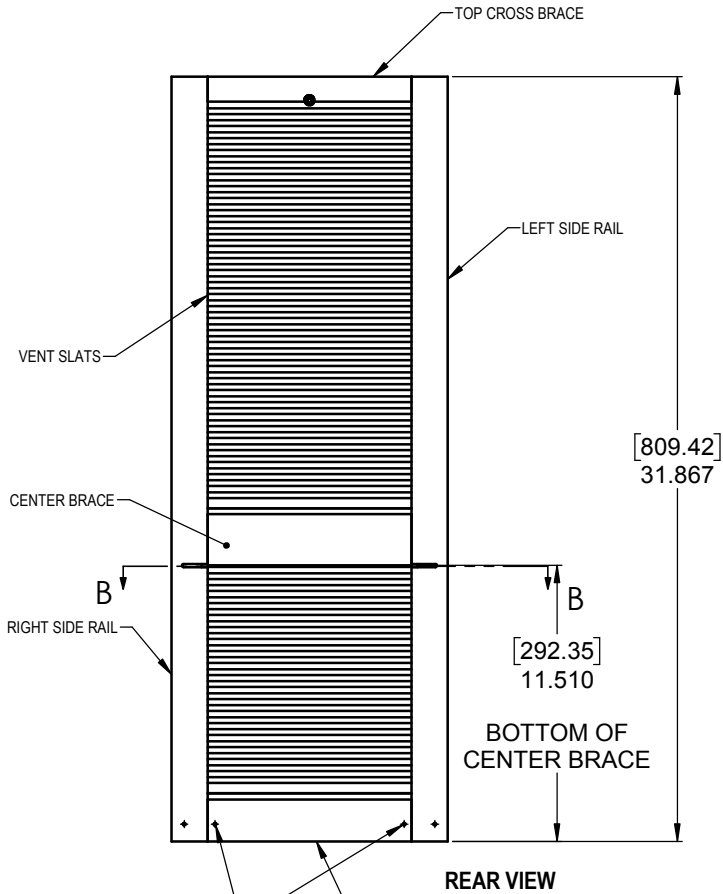
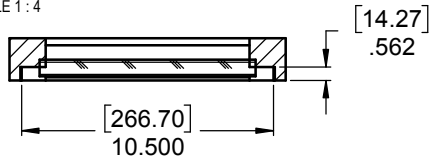


REAR VIEW

ITEM NO.	PART NUMBER	DESCRIPTION	QTY.
1	65861-1	WOOD GRILL MOUNTING BRACKET	1
2	67688	Standoff Grille	1
3	M00502-135	Screw, Machine, #8-32 x 2-1/2" Lg, Phillips Truss Head	1
4	M00600-080	WASHER, FLAT, #8, TYPE 302SS	1
5	63825-12	FOAM TAPE (12.0")	1

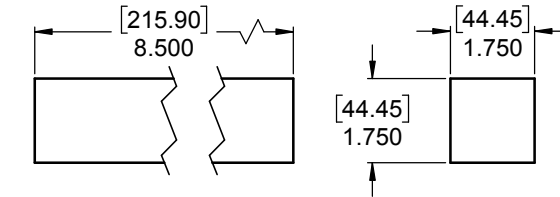
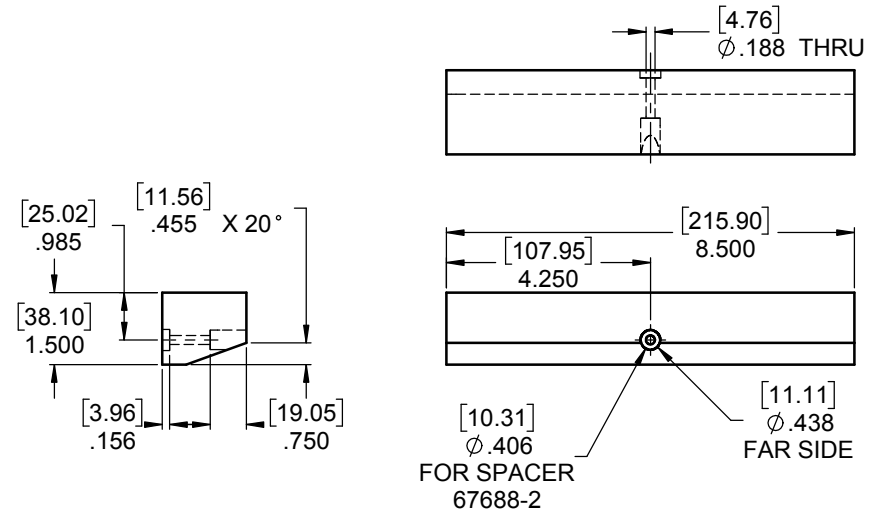
UNLESS OTHERWISE SPECIFIED: DIMENSIONS ARE IN INCHES TOLERANCES: XX ± .1 XXX ± .015 ANGULAR ± 15° FRACTIONS ± 1/64 BREAK SHARP EDGES: .015 X .45° RADIUS SHARP FILLETS: .015 TO .031		SIGNATURES DESIGNED CJT 7/16/2013 DRAWN CJT 7/16/2013 CHECKED 8/6/2103	DATE 7/16/2013 7/16/2013 8/6/2103	Perlick Corporation Milwaukee, Wisconsin WOOD GRILL, PASS THROUGH SET-UP	
MATERIAL:		QTY.:	FINISH:	REFERENCE: PART NO. KIT 67893-1 PURCHASE REC.:	DWG NO. 67893 SCALE = 1:8 SHEET 8 OF 10

SECTION B-B
SCALE 1:4

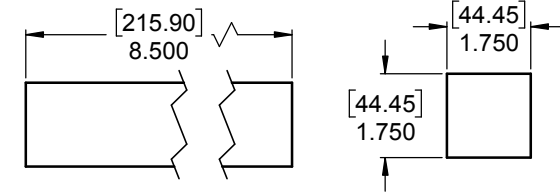


USE SHEET METAL BRACKET AS TEMPLATE TO DRILL 7/64" X 3/4" DEEP HOLES.

TOP CROSS BRACE



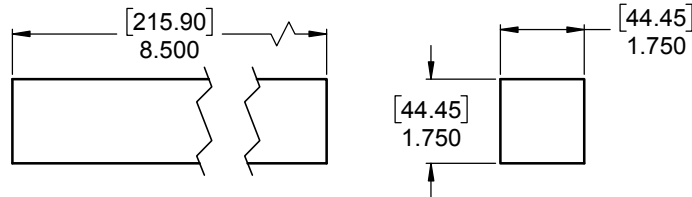
BOTTOM BRACE



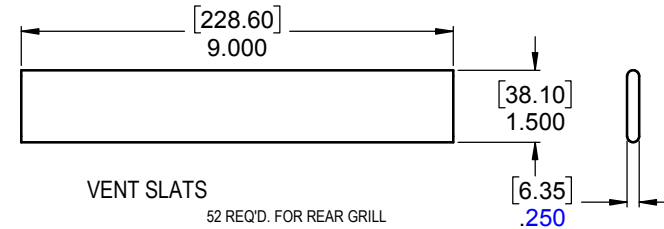
CENTER BRACE

REVISED SINGLE CONTROL GRILL FOR CLEARANCE AROUND CONTROL		
B	9/26/2017	JMP
RELEASE FOR PRODUCTION		
A	7/16/2013	CJT
REVISIONS		

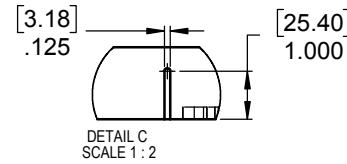
UNLESS OTHERWISE SPECIFIED: DIMENSIONS ARE IN INCHES TOLERANCES: XX ± .1 XX ± .05 XX ± .03 ANGULAR ± 15° FRACTIONS ± 1/64 BREAK SHARP EDGES: .015 X 45° RADIUS SHARP FILLETS: .015 TO .031		SIGNATURES	DATE	Perlick Corporation Milwaukee, Wisconsin
DESIGNED	CJT	7/16/2013	TITLE: WOOD GRILL, REAR PASS THROUGH DETAILS	
DRAWN	CJT	7/16/2013	CHECKED	REFERENCE: PART NO. SEE SHEET 1
MATERIAL:	QTY:	FINISH:	PURCHASE REC.:	DWG NO. 67893
			SCALE = 1:16	SHEET 9 OF 10



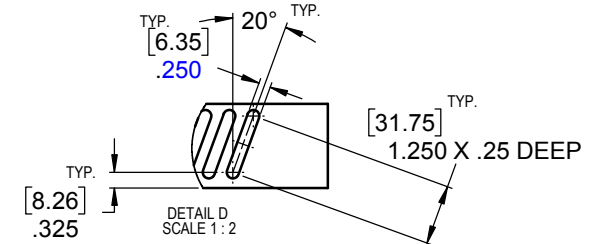
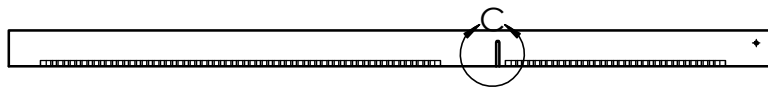
CENTER AND BOTTOM BRACE



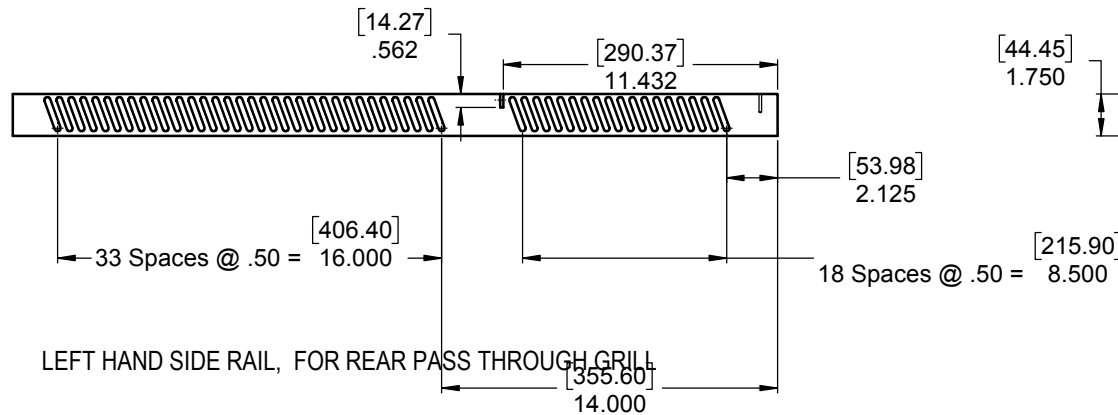
VENT SLATS
52 REQ'D. FOR REAR GRILL



REAR VIEW, SIDE RAIL



RIGHT HAND SIDE RAIL, FOR REAR PASS THROUGH GRILL



LEFT HAND SIDE RAIL, FOR REAR PASS THROUGH GRILL

REVISED SINGLE CONTROL GRILL FOR CLEARANCE AROUND CONTROL	
B	9/26/2017 JMP
RELEASED KIT	
A	8/7/2013 CJT
REVISIONS	

UNLESS OTHERWISE SPECIFIED: DIMENSIONS ARE IN INCHES TOLERANCES: XX ± .01 XXX ± .005 ANGULAR ± 15° FRACTIONS ± 1/64 BREAK SHARP EDGES: .015 X .45° RADIUS SHARP FILLETS: .015 TO .031		SIGNATURES DESIGNED CJT 7/15/2013 DRAWN CJT 7/16/2013 CHECKED	DATE 7/15/2013 7/16/2013	Perlick Corporation Milwaukee, Wisconsin WOOD GRILL, SIDE RAIL DETAILS
MATERIAL:	QTY:	FINISH:	REFERENCE: PART NO. KIT 67893-1 PURCHASE REC.:	
			DWG NO. 67893	SCALE = 1:16
				SHEET 10 OF 10