



IMPORTANT FOR FUTURE REFERENCE

Please complete this information and retain this manual for the life of the equipment:

Model #: _____

Serial #: _____

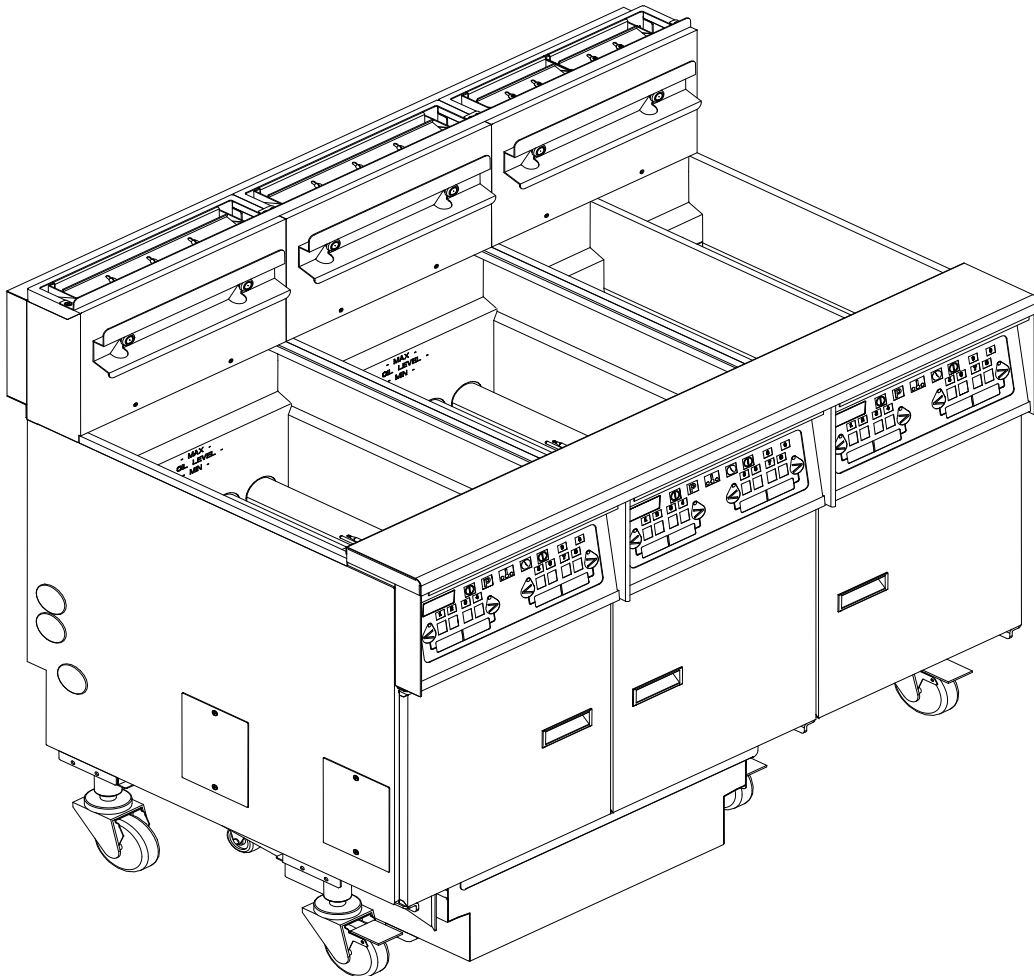
Date Purchased: _____

ENGLISH

Exploded Parts Manual

MGII and MGIIIT Gas Fryer Models

Built after 09/2002



Post in a prominent location the instructions to be followed in the event that an operator smells gas. Obtain this information from your local gas supplier.

WARNING

DO NOT store or use gasoline or other flammable vapors and liquids in the vicinity of this or any other appliance.

WARNING

Improper installation, alteration, service or maintenance can cause property damage, injury or death. Read the installation, operating and maintenance instructions thoroughly before installing or servicing this appliance.

WARNING

Installation, maintenance and repairs should be performed by a Pitco Authorized Service and Parts (ASAP) company technician or other qualified personnel. Installation, maintenance or repairs by an unauthorized and unqualified personnel will void the warranty.

WARNING

Installation and all connections must be made according to national and local regulations and codes in force.

WARNING

During the warranty period if a customer elects to use a non-original part or modifies an original part purchased from Pitco and/or its Authorized Service and Parts (ASAP) companies, this warranty will be void. In addition, Pitco and its affiliates will not be liable for any claims, damages or expenses incurred by the customer which arises directly or indirectly, in whole or in part, due to the installation of any modified part and/or received from an unauthorized service center.

WARNING

This appliance, when installed, must be electrically grounded in accordance with local codes, or in the absence of local codes, with the National Electrical Code, ANSI/NFPA 70, or the Canadian Electrical Code, CSA C22.2, as applicable.

WARNING

Adequate means must be provided to LIMIT the movement of this appliance without depending on the gas or electrical cord connection. Single appliances equipped with legs must be stabilized by installing anchor straps. All appliances equipped with casters must be stabilized by installing restraining chains.

WARNING

An appliance equipped with casters and a flexible gas line must be connected to the gas supply with a quick disconnect device. This quick disconnect must comply with ANSI Z24.41.

WARNING

DO NOT alter or remove structural material on the appliance to accommodate placement under a ventilation hood.

WARNING

This appliance is intended for professional use only and should be operated by fully trained and qualified personnel.

WARNING

If the appliance is equipped with a power cord and it is damaged, it must be replaced by a Pitco Authorized Service and Parts (ASAP) company technician, or a similarly qualified person in order to avoid a hazard.

WARNING

The power supply must be disconnected before servicing, maintaining or cleaning this appliance.

WARNING

The appliance is NOT jet stream approved. DO NOT clean the appliance with a water jet.

WARNING

DO NOT attempt to move this appliance or transfer hot liquids from one container to another when the unit is at operating temperature or filled with hot liquids. Serious personal injury could result if skin comes in contact with the hot surfaces or liquids.

WARNING

DO NOT sit or stand on this appliance. The appliance's front panel, tank, splash back, tank cover, workshelf, drain board is not a step. Serious injury could result from slipping, falling or contact with hot liquids.

WARNING

NEVER use the appliance as a step for cleaning or accessing the ventilation hood. Serious injury could result from slips, trips or from contacting hot liquids.

WARNING

The oil/shortening level should NOT fall below the minimum indicated level line at any time. The use of old shortening can be dangerous as it will have a reduced flash point and be more prone to surge boiling.

WARNING

The contents of the crumb catch and/or filter pan of any filter system must be emptied into a fireproof container at the end of each day. Some food particles can spontaneously combust into flames if left soaking in certain oil or shortening.

WARNING

Completely shut the appliance down when shortening/oil is being drained from the appliance. This will prevent the appliance from heating up during the draining and filling process. Serious injury can occur.

WARNING

This appliance is intended for indoor use only.

WARNING

DO NOT operate appliance unless all panels and access covers are attached correctly.

WARNING

It is recommended that this appliance be inspected by a qualified service technician for proper performance and operation on a yearly basis.

WARNING

There is an open flame inside this appliance. The unit may get hot enough to set nearby materials on fire. Keep the area around the appliance free from combustibles.

WARNING

DO NOT supply the appliance with a gas that is not indicated on the data plate. If you need to convert the appliance to another type of fuel, contact your dealer.

WARNING

DO NOT use an open flame to check for gas leaks!

WARNING

If gas flow to appliance is interrupted, or pilots extinguish, wait 5 minutes before attempting to relight the pilot to allow any residual gas in appliance to dissipate.

WARNING

Ensure that the appliance can get enough air to keep the flame burning correctly. If the flame is starved for air, it can give off a dangerous carbon monoxide gas. Carbon monoxide is a clear odorless gas that can cause suffocation.

TABLE OF CONTENTS

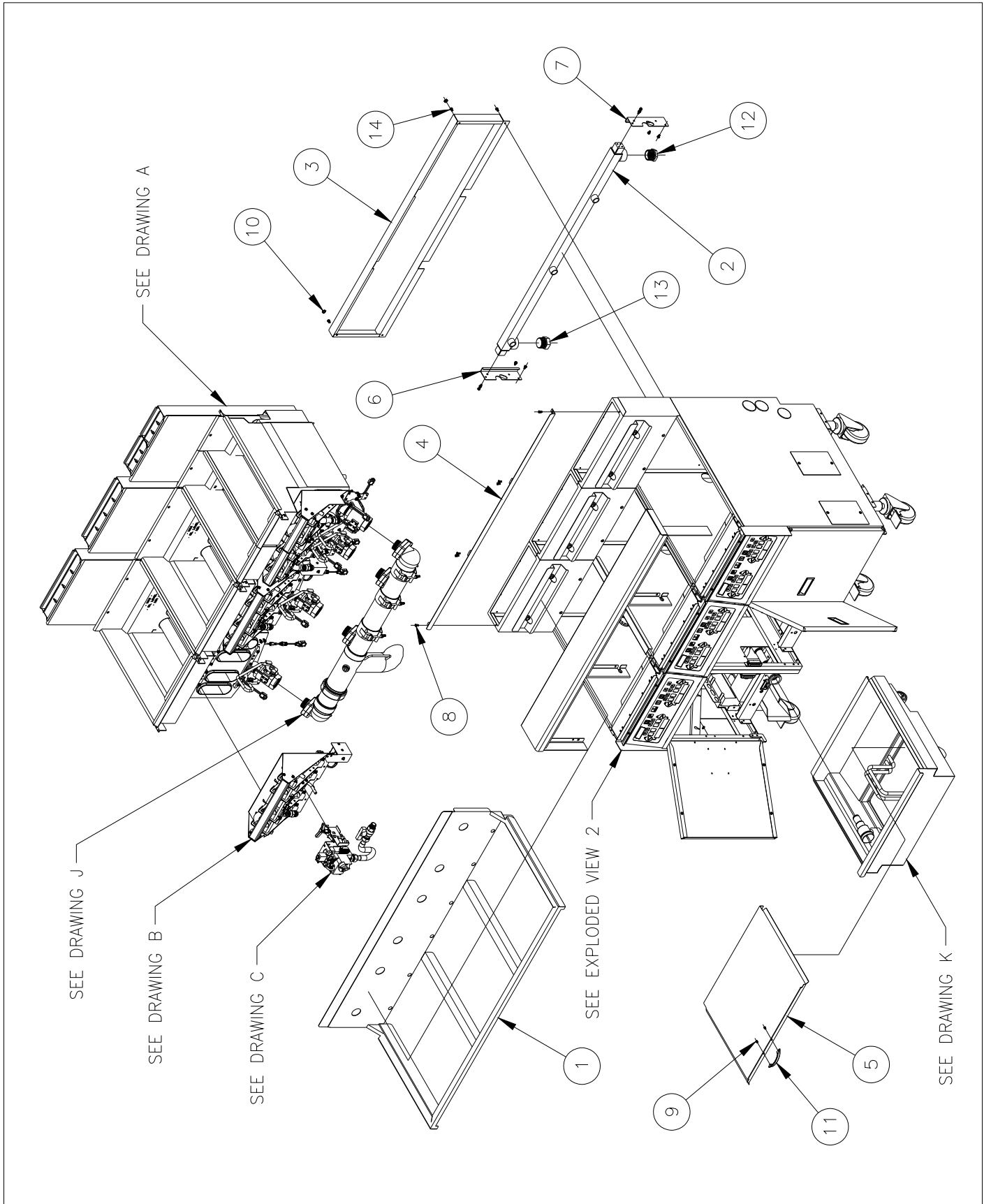
FRYER EXPLODED VIEW.....	3
FRYER EXPLODED VIEW 1 PARTS LIST	3
FRYER EXPLODED VIEW 1.....	4
FRYER EXPLODED VIEW 2 PARTS LIST	5
FRYER EXPLODED VIEW 2.....	6
A) TANK.....	7
TANK DRAWING A PARTS LIST	7
TANK DRAWING A.....	8
B) BURNER ASSEMBLY.....	9
BURNER ASSEMBLY DRAWING B PARTS LIST	9
BURNER ASSEMBLY DRAWING B	10
C) GAS PIPING	11
GAS PIPING DRAWING C PARTS LIST	11
GAS PIPING DRAWING C	12
D) GAS CONVERSION KITS.....	13
GAS CONVERSION KITS DRAWING D	14
E) FRYER CABINET	15
FRYER CABINET DRAWING E PARTS LIST	15
FRYER CABINET DRAWING E.....	16
F) ENTRANCE BOX.....	17
ENTRANCE BOX DRAWING F PARTS LIST.....	17
ENTRANCE BOX DRAWING F	18
G) FRONT PANEL AND CONTROL BOX.....	19
FRONT PANEL AND CONTROL BOX DRAWING G PARTS LIST	19
FRONT PANEL AND CONTROL BOX DRAWING G	20
H) CORD BOX.....	21
CORD BOX DRAWING H PARTS LIST.....	21
CORD BOX DRAWING H	22
I) FRYER DRAIN LINE.....	23
FRYER DRAIN LINE DRAWING I PARTS LIST.....	23
FRYER DRAIN LINE DRAWING I	24
J) FILTER ASSEMBLY	25
FILTER ASSEMBLY DRAWING J PARTS LIST.....	25
FILTER ASSEMBLY DRAWING J	26
K) PUMP ASSEMBLY.....	27
PUMP ASSEMBLY DRAWING K PARTS LIST.....	27
PUMP ASSEMBLY DRAWING K	28
L) PUMP CONTROL BOX	29
PUMP CONTROL BOX DRAWING L PARTS LIST	29
PUMP CONTROL BOX DRAWING L.....	30
M) RETURN PIPING	31
RETURN PIPING DRAWING M PARTS LIST	31
RETURN PIPING DRAWING M.....	32
N) ACCESSORIES.....	33
ACCESSORIES DRAWING N PARTS LIST	33
ACCESSORIES DRAWING N	34

FRYER EXPLODED VIEW

Fryer Exploded View 1 Parts List

ITEM #	PART #	PART DESCRIPTION
1	B5007601-C	CAPPING WELDMENT MGII-2
	B5007602-C	CAPPING WELDMENT MGII-3
	B5007603-C	CAPPING WELDMENT MGII-4
	B5007604-C	CAPPING WELDMENT MGII-5
2	B8036701	REAR-TEE MANIFOLD WELDMENT MGII-2
	B8036702	REAR-TEE MANIFOLD WELDMENT MGII-3
	B8036703	REAR-TEE MANIFOLD WELDMENT MGII-4
	B8036704	REAR-TEE MANIFOLD WELDMENT MGII-5
	B8036705	REAR-TEE MANIFOLD WELDMENT MGII-1
3	A4107901-C	CABINET BACK SPACER MGII-1
	A4107903-C	CABINET BACK SPACER MGII-2
	A4107905-C	CABINET BACK SPACER MGII-3
	A4107907-C	CABINET BACK SPACER MGII-4
	A4107909-C	CABINET BACK SPACER MGII-5
4	A4108001-C	SPLASH BACK SEAL ANGLE MGII-1
	A4108003-C	SPLASH BACK SEAL ANGLE MGII-2
	A4108005-C	SPLASH BACK SEAL ANGLE MGII-3
	A4108007-C	SPLASH BACK SEAL ANGLE MGII-4
	A4108009-C	SPLASH BACK SEAL ANGLE MGII-5
5	B6665002-C	FILTER PAN COVER ASSEMBLY (INCLUDES ITEMS 9 & 11)
6	A8032801-C	MANIFOLD SUPPORT BRACKET LOWER LEFT-HAND
7	A8032803-C	MANIFOLD SUPPORT BRACKET LOWER RIGHT-HAND
8	60140001	SCREW 10-24 X 1/2 FLAT HEAD SELF TAPPING
9	P0007300	SCREW 8-32 X 1/4 INDENTED HEX HEAD ZN
10	P6071493	HOLE PLUG 1/2"
11	P6071516	CHROME HANDLE 3"
12	P7036206	BUSHING REDUCER 1-1/4 MNPT X 1 FNPT HEX BLACK IRON
13	PP10479	PLUG 1-1/4 NPT HEX HEAD BLACK IRON
14	PP10023	SCREW 10-24 X 3/8 SELF TAPPING

Fryer Exploded View 1



Fryer Exploded View 2 Parts List

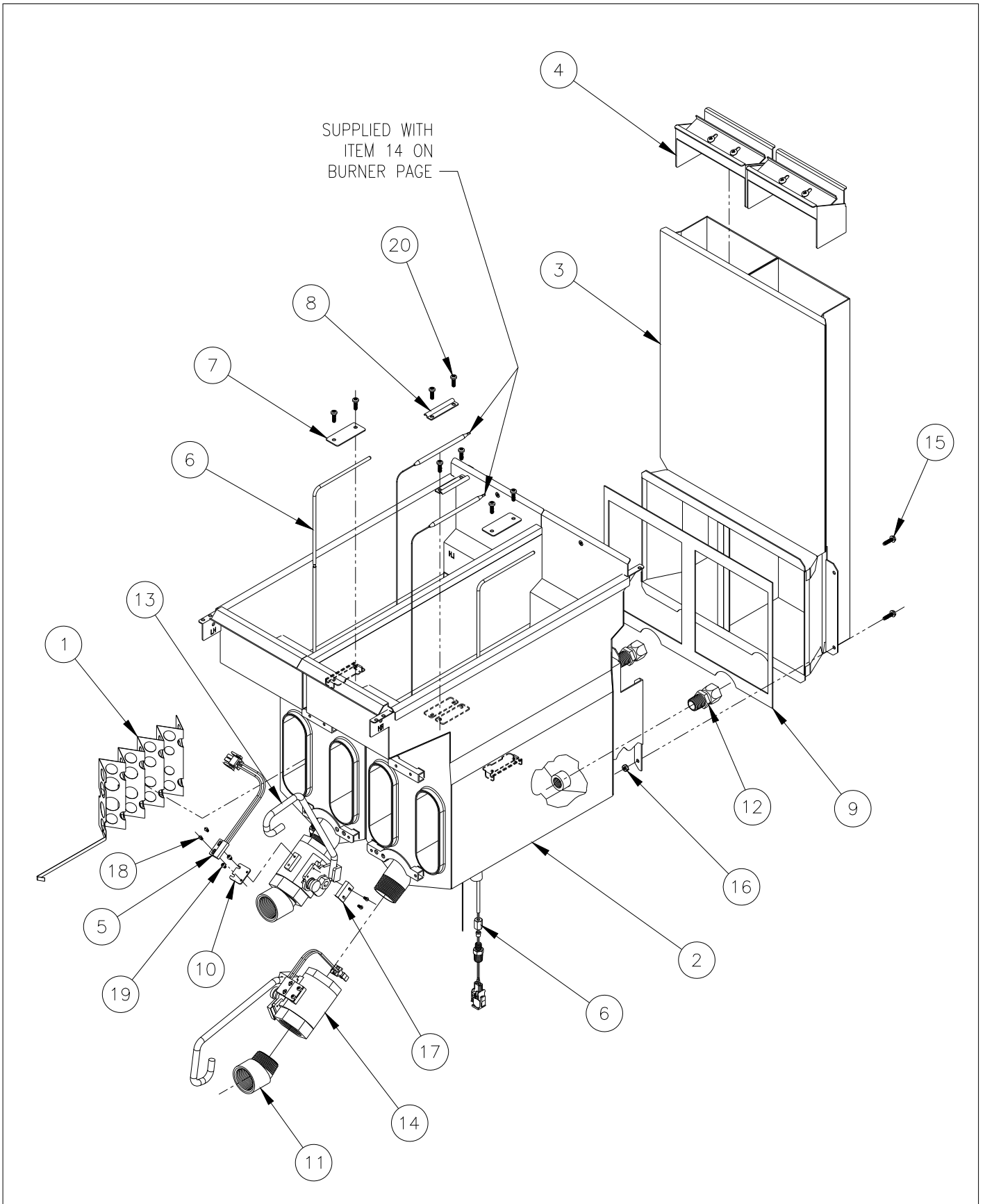
ITEM #	PART #	PART DESCRIPTION
1	B6750901	WIRING HARNESS HOOD CONTROL SINGLE
2	A3667906-C	FRONT PANEL BOTTOM RAIL
3	A3670101-C	FRONT PANEL HEAT DEFLECTOR
4	A7027602	FILTER PICKUP BLOCK
5	A7027901	FILTER PUMP PLATE MOUNTING ROD
6	A7028401-C	FILTER PUMP PLATE MOUNTING ROD HOLDER
7	A8033901-C	BURNER HEAT SHIELD LEFT-HAND
8	A8033903-C	BURNER HEAT SHIELD RIGHT-HAND
9	P7037359	PIPE NIPPLE 3/4 NPT SCHED-40 X 4 LG BLACK IRON
10	PP10023	SCREW 10-24 X 3/8 SELF TAPPING
11	PP11104	O-RING VITON NEWMAN #120-3107

A) TANK

Tank Drawing A Parts List

ITEM #	PART #	PART DESCRIPTION
1	B1003601	TANK BAFFLE WELDMENT
2	B3324501-C	TANK WELDMENT MGII
	B3324601-C	TANK WELDMENT MGIIT
3	B3503901	FLUE WELDMENT MGII
	B3504001	FLUE WELDMENT MGIIT (REQUIRES ITEM #9)
4	B3504201	FLUE BAFFLE ASSEMBLY MGII
	B3504202	FLUE BAFFLE ASSEMBLY MGIIT
5	B5305001	DRAIN VALVE INTERLOCK SENSOR ASSEMBLY
6	B6700604-C	TEMPERATURE PROBE SERVICE KIT
7	A1406602	CLAMP PROBE THERMOSTAT MGIIT
	A1406802	CLAMP PROBE THERMISTOR MGII
8	A1407002	CLAMP PROBE HIGH LIMIT MGIIT
9	A3526701	FLUE GASKET MGIIT
10	A4021001-C	DRAIN VALVE INTERLOCK MOUNTING PLATE
11	A8030403	DRAIN LINE ADAPTER (NON-FILTER ONLY)
12	60130101	TANK REAR ADAPTER 37.5 FLARE SWIVEL X 1/2NPT
	P7036729	STEEL TANK PLUG 1/2NPT
13	60138701	BALL VALVE 1-1/4 FULL PORT REVERSIBLE MGII, MGIIT LEFT-HAND
	60138703	BALL VALVE 1-1/4 FULL PORT REVERSIBLE LOCKING MGII, MGIIT LH
14	60138702	BALL VALVE 1-1/4 FULL PORT REVERSIBLE MGIIT RIGHT-HAND
	60138704	BALL VALVE 1-1/4 FULL PORT REVERSIBLE LOCKING MGIIT RH
15	P0076100	SCREW 10-24 X 3/4 SELF TAPPING
16	P0092300	NUT HEX 10-24 KEP ZN
17	PP10263	PROXIMITY ACTUATOR SWITCH
18	PP10266	SCREW 4-40 X 1/4 ROUND HEAD SLOTTED ZN
19	PP10686	SCREW 6-32 X 1/4 ROUND HEAD PHILLIPS ZN
20	PP11366	SCREW 10-24 X 5/8 PAN HEAD SST

Tank Drawing A



B) BURNER ASSEMBLY

Burner Assembly Drawing B Parts List

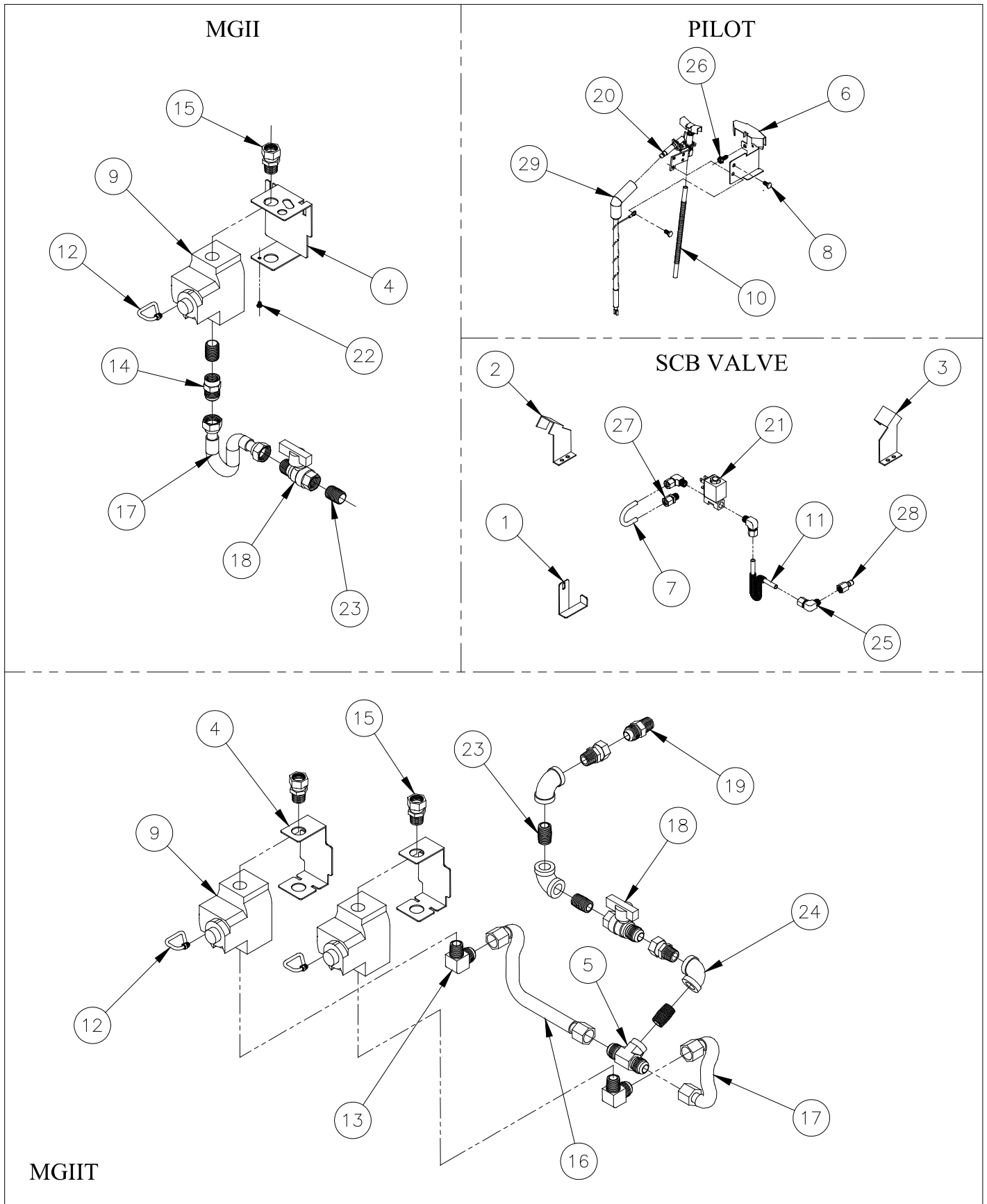
ITEM #	PART #	PART DESCRIPTION
1	B8042001	SELF-CLEANING BURNER RUNNER TUBE MG II
	B8042003	SELF-CLEANING BURNER RUNNER TUBE LEFT-HAND MG IIT
	B8042004	SELF-CLEANING BURNER RUNNER TUBE RIGHT-HAND MG IIT
2	60147801	THERMAL-LIMIT SWITCH WITH MANUAL RESET
3	A8031901-C	BRACKET HIGH-LIMIT MG II
	A8032001-C	BRACKET HIGH-LIMIT MG IIT
4	A8031201	GASKET BURNER BRACKET MG II
	A8031301	GASKET BURNER BRACKET MG IIT
5	A8031601	BURNER CROSSOVER MG II
6A	A8031701	BURNER SHIELD NATURAL LEFT-HAND MG II
	A8034901-C	BURNER COLLAR LP FULL LEFT-HAND MG II
6B	A8031801	BURNER SHIELD NATURAL SPLIT MG IIT
	A8034905-C	BURNER COLLAR LP SPLIT MG IIT
7	A8031703	BURNER SHIELD NATURAL RIGHT-HAND MG II
	A8034903-C	BURNER COLLAR LP FULL RIGHT-HAND MG II
8	B8037303-C	BURNER SLOTTED-FACE HIGH-EFFICIENCY NATURAL
	B8041901	BURNER INCONEL 601 WIRE-FACE SCREEN NATURAL SCB & LP (REPLACES B8030001)
9	B6745502	WIRE HARNESS HIGH-LIMIT 24VAC
10	60127501	FITTING ADAPTER FLARED 15/16-16 UN-2A X 1/2 FNPT BRASS
11	60129701	FITTING 1/4 MNPT X .344-32 UNS ORIFICE TIP BRASS
12A	60132801	FITTING TEST PRESSURE PLUG 1/8-27 (CE)
12B	N/A	PLUG 1/8 NPT 3/16 HEX SOCKET STEEL
13	A7513703	ORIFICE TIP 1.20mm DIA
	P6071344	ORIFICE TIP #44 DIA
	P6071346	ORIFICE TIP #46 DIA
	P6071355	ORIFICE TIP #55 DIA
14	PP10084	SWITCH HIGH-LIMIT LCHM05030
15	P0007300	SCREW 8-32 X 1/4 INDENTED HEX HEAD ZN
16	PP10023	SCREW 10-24 X 3/8 SELF TAPPING
17	PP10687	SCREW 6-32 X 5/16 TRUSS HEAD PHILLIPS ZN
18 (INCLUDES ITEMS 5-8, 10-12, & 16)	B8035602	BURNER ASSEMBLY SLOT-FACE HIGH-EFFICIENCY NATURAL MG IIT
	B8035604	BURNER ASSEMBLY INCONEL 601 WIRE-FACE NATURAL SCB & LP MG IIT
	B8035702	BURNER ASSEMBLY SLOT-FACE HIGH-EFFICIENCY NATURAL MG II
	B8035704	BURNER ASSEMBLY INCONEL 601 WIRE-FACE NATURAL SCB & LP MG II
19	A2036904-C	SELF-CLEANING BURNER HIGH-LIMIT BRACKET MG II
	A2036902-C	SELF-CLEANING BURNER HIGH-LIMIT BRACKET LEFT-HAND MG IIT
	A2036906-C	SELF-CLEANING BURNER HIGH-LIMIT BRACKET RIGHT-HAND MG IIT
20	P0075300	SCREW 10-16 X 5/8 HEX HEAD SELF-DRILLING
N/A	N/A	3M SUPER 77 MULTIPURPOSE HIGH TACK SPRAY ADHESIVE (REQUIRED WHEN INSTALLING NEW ITEM #4)

C) GAS PIPING

Gas Piping Drawing C Parts List

ITEM #	PART #	PART DESCRIPTION
1	A2036701-C	PILOT ORIFICE RETAINER BRACKET MGII
2	A2036801-C	PILOT ORIFICE RETAINER BRACKET LEFT-HAND MGIIIT
3	A2036802-C	PILOT ORIFICE RETAINER BRACKET RIGHT-HAND MGIIIT
4	A8032101-C	SHIELD GAS VALVE MGII
	A8032201-C	SHIELD GAS VALVE MGIIIT
5	A8033101	FITTING TEE (2X) 15/16-16 UN-2A X 1/2 FNPT STEEL
6	A8035002	PILOT BRACKET w/TAB CE MGII
	A8035102	PILOT BRACKET w/TAB CE MGIIIT
	A8035302	PILOT BRACKET MGII
	A8035402	PILOT BRACKET MGIIIT
7	A8039001	TUBE 1/4" OD SELF-CLEANING BURNER SOLENOID VALVE
8	60088001	SCREW 10-32 X 1/4 HEX HEAD CAP SST
9	60113501-C	GAS VALVE VR8204 24V FAST NATURAL MGII, MGIIIT
	60113502-C	GAS VALVE VR8204 24V FAST LP MGII, MGIIIT
	60113503-C	GAS VALVE VR8204 24V FAST NATURAL CE MGII, MGIIIT
	60113504-C	GAS VALVE VR8204 24V FAST LP CE MGII, MGIIIT
	60113505-C	GAS VALVE VR8204 24V FAST NATURAL UNREGULATED CE MGII
10	60119001	TUBE FLEXIBLE W/O FITTINGS PILOT .25 OD X 18" LONG 1" STR
11	60119010	TUBE FLEXIBLE W/O FITTINGS SOLENOID VALVE .25 OD X 6" LONG 1" STR
12	60125901	VENT TUBE GAS VALVE
13	60127401	ELBOW FITTING FLARED 15/16-16 UN-2A X 1/2 MNPT BRASS
14	60127501	ADAPTER FITTING FLARED 15/16-16 UN-2A X 1/2 FNPT BRASS
15	60127601	ADAPTER FITTING SWIVEL 15/16-16 UN-2B X 1/2 MNPT BRASS
16	60128014	TUBE FLEXIBLE w/FITTINGS 16" LONG
17	60128017	TUBE FLEXIBLE w/FITTINGS 10" LONG
18	60128101	SHUTOFF VALVE GAS SUPPLY 15/16-16 UN-2A X 1/2 FNPT BRASS
19	60129902	ADAPTER FITTING FLARED 15/16-16 UN-2A X 1/2 MNPT-3/8 FNPT STEEL
20	60130901	PILOT INLINE ELECTRONIC IGNITION NATURAL
	60130902	PILOT INLINE ELECTRONIC IGNITION LP
21	60148101	SOLENOID VALVE 24VAC SELF-CLEANING BURNER
22	P0007200	SCREW 8-32 X 1/4 ROUND HEAD ZN
23	P7037090	PIPE NIPPLE CLOSE 1/2 NPT SCHED-40 BLACK STEEL
24	P7037678	ELBOW 1/2 NPT 90° BLACK IRON
25	P7037797	ELBOW 1/4 TUBING X 1/8 MNPT BRASS
26	PP10023	SCREW 10-24 X 3/8 SELF TAPPING
27	PP10934	COMPRESSION FITTING 1/4 TUBING X 1/8 MNPT BRASS
28	2908-0940501	PILOT ORIFICE #52 DIA NATURAL SELF-CLEANING BURNER BRASS
	2908-0940502	PILOT ORIFICE #68 DIA LP SELF-CLEANING BURNER BRASS
29	B6783401	WIRE, IGNITION CABLE WITH GROUND WRAP

Gas Piping Drawing C

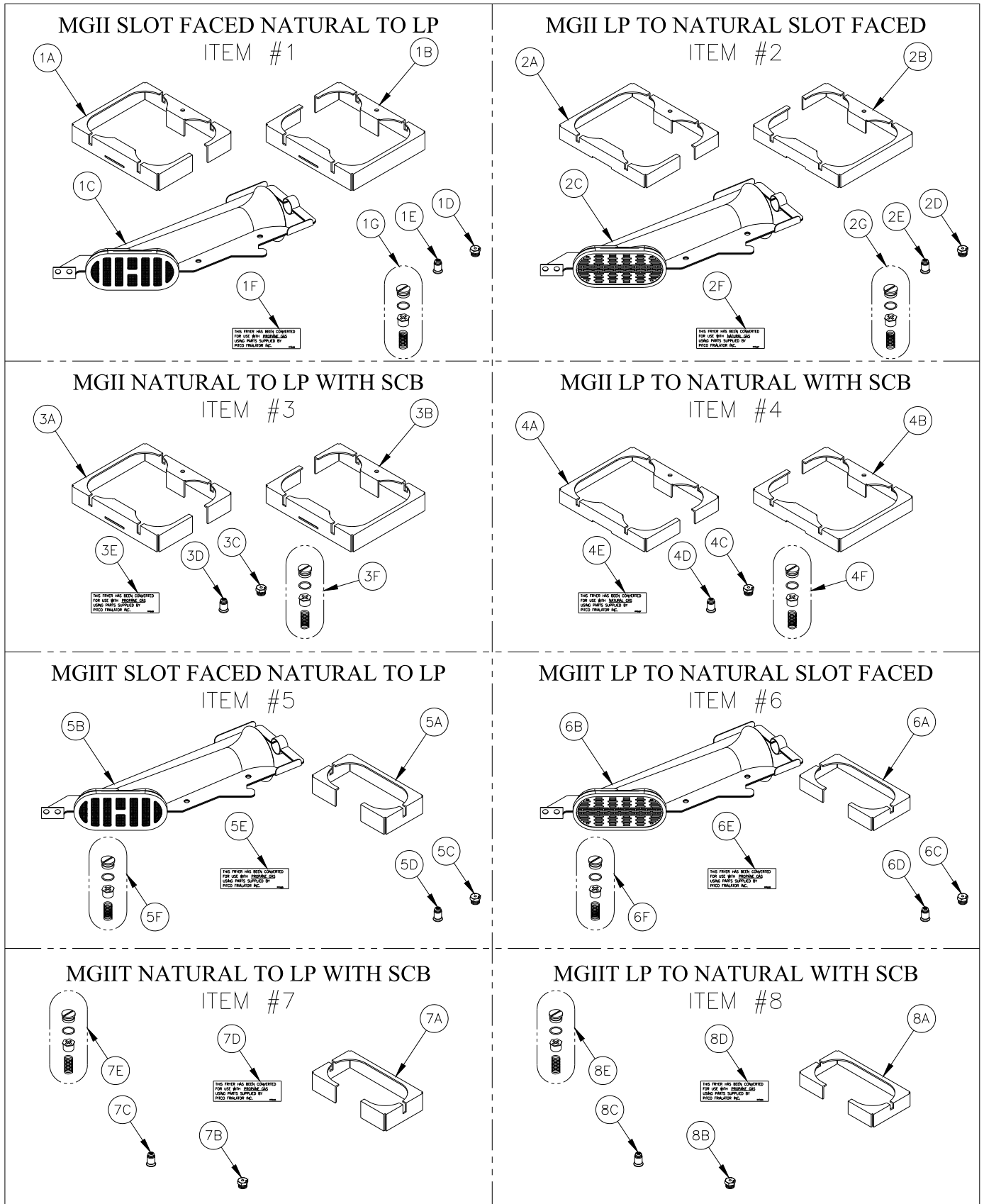


D) GAS CONVERSION KITS

Gas Conversion Kits Drawing D Parts List

ITEM #	PART #	PART DESCRIPTION	QTY
1	B8043201-C	GAS CONVERSION KIT SLOT FACED NATURAL TO LP MGII	
1A	A8034901-C	BURNER COLLAR LP FULL LEFT-HAND MGII	1
1B	A8034903-C	BURNER COLLAR LP FULL RIGHT-HAND MGII	1
1C	B8041901	BURNER INCONEL 601 WIRE-FACE SCREEN NATURAL SCB & LP	4
1D	P6071355	ORIFICE TIP #55 DIA	4
1E	P6071665	ORFICE PILOT SPUD LP .016 DIA	1
1F	PP10426	GAS CONVERSION NOTICE LABEL NATURAL TO LP	1
1G	PP11141	GAS VALVE CONVERSION KIT VR8204 NATURAL TO LP	1
2	B8043202-C	GAS CONVERSION KIT LP TO SLOT FACED NATURAL MGII	
2A	A8031701	BURNER SHIELD NATURAL LEFT-HAND MGII	1
2B	A8031703	BURNER SHIELD NATURAL RIGHT-HAND MGII	1
2C	B8037303-C	BURNER SLOTTED-FACE HIGH-EFFICIENCY NATURAL	4
2D	P6071346	ORIFICE TIP #46 DIA	4
2E	P6071666	ORFICE PILOT SPUD NAT .022 DIA	1
2F	PP10427	GAS CONVERSION NOTICE LABEL LP TO NATURAL	1
2G	PP11319	GAS VALVE CONVERSION KIT VR8204 LP TO NATURAL	1
3	B8043225-C	GAS CONVERSION KIT LP TO NATURAL WITH SCB MGII	
3A	A8034901-C	BURNER COLLAR LP FULL LEFT-HAND MGII	1
3B	A8034903-C	BURNER COLLAR LP FULL RIGHT-HAND MGII	1
3C	P6071355	ORIFICE TIP #55 DIA	4
3D	P6071665	ORFICE PILOT SPUD LP .016 DIA	1
3E	PP10426	GAS CONVERSION NOTICE LABEL NATURAL TO LP	1
3F	PP11141	GAS VALVE CONVERSION KIT VR8204 NATURAL TO LP	1
4	B8043226-C	GAS CONVERSION KIT NATURAL TO LP WITH SCB MGII	
4A	A8031701	BURNER SHIELD NATURAL LEFT-HAND MGII	1
4B	A8031703	BURNER SHIELD NATURAL RIGHT-HAND MGII	1
4C	P6071346	ORIFICE TIP #46 DIA	4
4D	P6071666	ORFICE PILOT SPUD NAT .022 DIA	1
4E	PP10427	GAS CONVERSION NOTICE LABEL LP TO NATURAL	1
4F	PP11319	GAS VALVE CONVERSION KIT VR8204 LP TO NATURAL	1
5	B8043203-C	GAS CONVERSION KIT SLOT FACED NATURAL TO LP MGIIIT	
5A	A8034905-C	BURNER COLLAR LP SPLIT MGIIIT	4
5B	B8041901	BURNER INCONEL 601 WIRE-FACE SCREEN NATURAL SCB & LP	4
5C	P6071355	ORIFICE TIP #55 DIA	4
5D	P6071665	ORFICE PILOT SPUD LP .016 DIA	2
5E	PP10426	GAS CONVERSION NOTICE LABEL NATURAL TO LP	1
5F	PP11141	GAS VALVE CONVERSION KIT VR8204 NATURAL TO LP	2
6	B8043204-C	GAS CONVERSION KIT LP TO SLOT FACED NATURAL MGIIIT	
6A	A8031801	BURNER SHIELD NATURAL SPLIT MGIIIT	4
6B	B8037303-C	BURNER SLOTTED-FACE HIGH-EFFICIENCY NATURAL	4
6C	P6071346	ORIFICE TIP #46 DIA	4
6D	P6071666	ORFICE PILOT SPUD NAT .022 DIA	2
6E	PP10427	GAS CONVERSION NOTICE LABEL LP TO NATURAL	1
6F	PP11319	GAS VALVE CONVERSION KIT VR8204 LP TO NATURAL	2
7	B8043227-C	GAS CONVERSION KIT LP TO NATURAL WITH SCB MGIIIT	
7A	A8034905-C	BURNER COLLAR LP SPLIT MGIIIT	4
7B	P6071355	ORIFICE TIP #55 DIA	4
7C	P6071665	ORFICE PILOT SPUD LP .016 DIA	2
7D	PP10426	GAS CONVERSION NOTICE LABEL NATURAL TO LP	1
7E	PP11141	GAS VALVE CONVERSION KIT VR8204 NATURAL TO LP	2
8	B8043228-C	GAS CONVERSION KIT NATURAL TO LP WITH SCB MGIIIT	
8A	A8031801	BURNER SHIELD NATURAL SPLIT MGIIIT	4
8B	P6071346	ORIFICE TIP #46 DIA	4
8C	P6071666	ORFICE PILOT SPUD NAT .022 DIA	2
8D	PP10427	GAS CONVERSION NOTICE LABEL LP TO NATURAL	1
8E	PP11319	GAS VALVE CONVERSION KIT VR8204 LP TO NATURAL	2

Gas Conversion Kits Drawing D

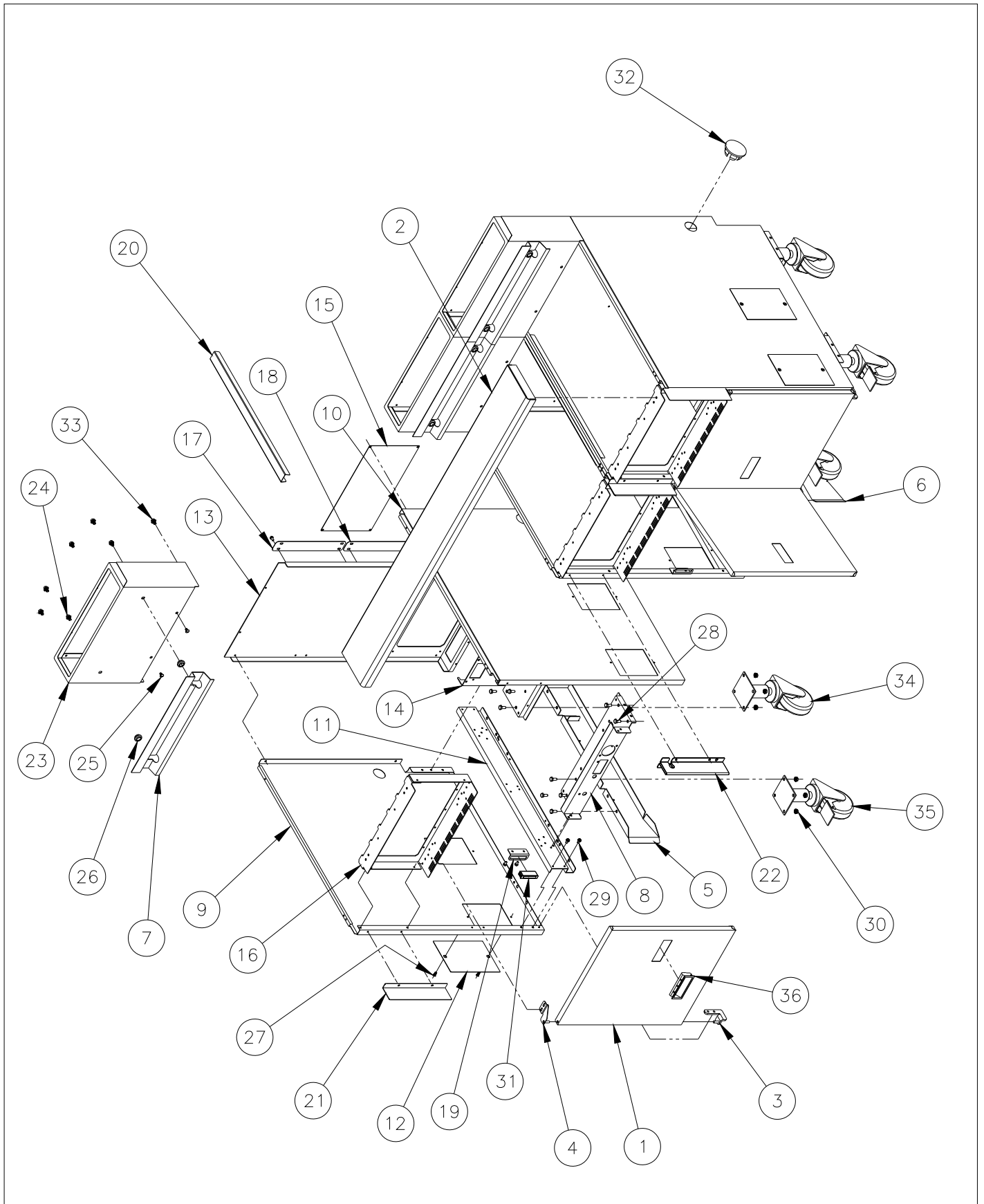


E) FRYER CABINET

Fryer Cabinet Drawing E Parts List

ITEM #	PART #	PART DESCRIPTION
1	B2304602-C	DOOR ASSEMBLY MGII
2	B3633001-C	FRONT PANEL TOP DECK WELDMENT MGII-1
	B3633002-C	FRONT PANEL TOP DECK WELDMENT MGII-2
	B3633003-C	FRONT PANEL TOP DECK WELDMENT MGII-3
	B3633004-C	FRONT PANEL TOP DECK WELDMENT MGII-4
	B3633005-C	FRONT PANEL TOP DECK WELDMENT MGII-5
3	B3801801	HINGE WELDMENT LOWER RIGHT-HAND
	B3801802	HINGE WELDMENT LOWER LEFT-HAND
4	B3802401	HINGE WELDMENT UPPER RIGHT-HAND
	B3802402	HINGE WELDMENT UPPER LEFT-HAND
5	B6672501	FILTER PAN RAIL WELDMENT LEFT-HAND
6	B6672502	FILTER PAN RAIL WELDMENT RIGHT-HAND
7	A1103204-C	BASKET HANGER WITHOUT CAPPING PIECE
	A1103304-C	BASKET HANGER WITH CAPPING PIECE
8	A1228301-C	CABINET FRONT BOTTOM BRACE MGII
9	A1510701-C	CABINET SIDE LEFT-HAND
10	A1510703-C	CABINET SIDE RIGHT-HAND
11	A1510801-C	CABINET SIDE SUPPORT
12	A1511401	CABINET SIDE COVER
13	A1631201-C	CABINET BACK TOP
14	A1631301-C	CABINET BACK BOTTOM
15	A1631401-C	CABINET BACK COVER
16	A1846001-C	CABINET FRONT SPACER
17	A1846102-C	CABINET REAR JOINING STRIP TOP MGII TO MGII
18	A1846104-C	CABINET REAR JOINING STRIP BOTTOM MGII TO MGII
19	A1847002	BRACKET MAGNETIC CATCH
20	A1908202-C	CABINET CHANNEL JOINING STRIP MGII TO MGII
21	A3671102-C	FRONT PANEL END CAP LH/RH
22	A3672502	FRONT PANEL MIDDLE CAP OPEN HEM
23	A4107802-C	SPLASH BACK MGII
24	60118201	BOLT 1/4-20 X 3/8 HEX FLANGE HEAD
25	60125801	SCREW 10-24 X 3/8 TRUSS HEAD SLOTTED LOCKING SST
26	60138101	STUD SPLASH BACK SCREW ON
27	60140001	SCREW 10-24 X 1/2 FLAT HEAD SELF TAPPING
28	P0020600	SCREW 1/4-20 X 5/8 HEX HEAD CAP ZN
29	P0075400	SCREW 10-24 X 1/2 SELF TAPPING
30	P0093300	NUT HEX (KEP) 1/4-20 ZN
31	P6071300	MAGNETIC CATCH STANDARD
32	P6071448	HOLE PLUG 2"
33	PP10023	SCREW 10-24 X 3/8 SELF TAPPING
34	PP10814	CASTER SWIVEL 9" NON-LOCKING
35	PP10815	CASTER SWIVEL 9" LOCKING
36	PP11006	DOOR HANDLE RECESSED PLASTIC
N/A	B1824201-C	CABINET ASSEMBLY MGII
N/A	B3901504	CASTER SET 9" LOCKING & NON-LOCKING (4-PACK) W/HARDWARE

Fryer Cabinet Drawing E

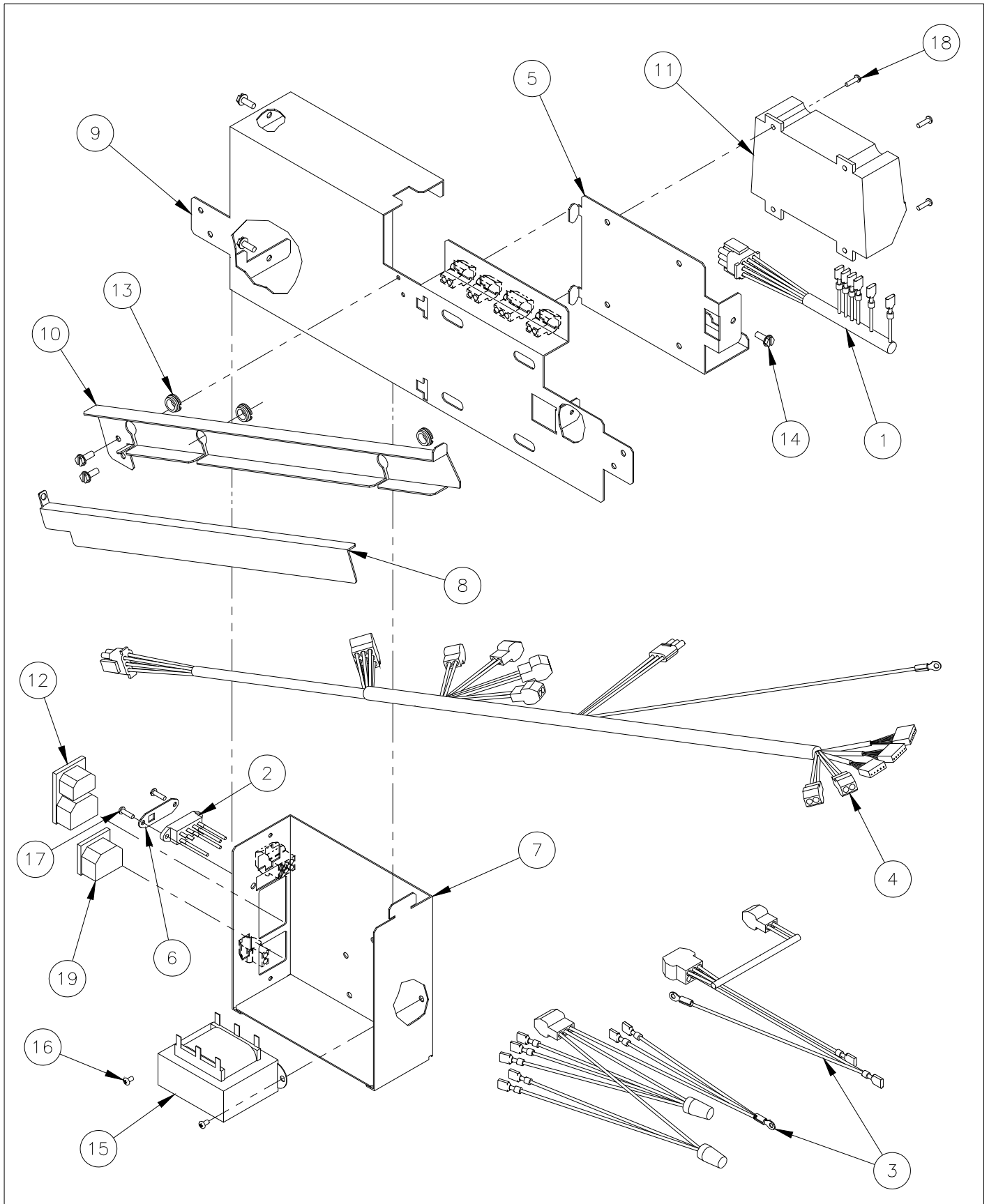


F) ENTRANCE BOX

Entrance Box Drawing F Parts List

ITEM #	PART #	PART DESCRIPTION
1	B6744601	WIRING HARNESS ELECTRONIC IGNITION MODULE RIGHT-HAND
	B6744602	WIRING HARNESS ELECTRONIC IGNITION MODULE LEFT-HAND
	B6757601	WIRING HARNESS ELECTRONIC IGNITION MODULE LEFT-HAND CE
	B6757602	WIRING HARNESS ELECTRONIC IGNITION MODULE RIGHT-HAND CE
2	B6744901	VOLTAGE SELECTOR SWITCH ASSEMBLY 120/208/220-240V
3	B6748201	WIRING HARNESS ENTRANCE BOX TRANSFORMER
4	B6751101	WIRING HARNESS SPINAL TAP LOWER
5	A2957901-C	ENTRANCE BOX IGNITION MODULE BRACKET LEFT-HAND
	A2957903-C	ENTRANCE BOX IGNITION MODULE BRACKET RIGHT-HAND
6	A2958102	ENTRANCE BOX SWITCH COVER 120V
	A2958104	ENTRANCE BOX SWITCH COVER 208V
	A2958106	ENTRANCE BOX SWITCH COVER 220/240V
7	A2958401-C	ENTRANCE BOX POWER SUPPLY LEFT-HAND
	A2958403-C	ENTRANCE BOX POWER SUPPLY RIGHT-HAND
8	A2958901-C	ENTRANCE BOX WIRE COVER INNER LEFT-HAND
	A2958903-C	ENTRANCE BOX WIRE COVER INNER RIGHT-HAND
9	A2959001-C	ENTRANCE BOX SUPPORT BRACKET LEFT-HAND
	A2959003-C	ENTRANCE BOX SUPPORT BRACKET RIGHT-HAND
10	A2959101-C	ENTRANCE BOX WIRE COVER OUTER LEFT-HAND
	A2959103-C	ENTRANCE BOX WIRE COVER OUTER RIGHT-HAND
11	60102601	ELECTRONIC IGNITION MODULE 24VAC CE
	60108601	CONTROLLER IGNITION SPARK 24VAC
12	60148401	POWER CONNECTOR INLET & OUTLET IEC-320 (REPLACES 60130701, NEW A2958401-C OR 03-C REQUIRED PRIOR TO 6/05)
13	60130401	BUSHING .512 HOLE DIA
14	PP10023	SCREW 10-24 X 3/8 SELF TAPPING
15	PP10429	TRANSFORMER 80VA 120/208/240V TO 24V
16	PP10686	SCREW 6-32 X 1/4 ROUND HEAD PHILLIPS ZN
17	PP10689	SCREW 6-32 X 1/2 ROUND HEAD PHILLIPS ZN
18	P0006300	SCREW 6-32 X 1 ROUND HEAD ZN (USED WITH 60102601 ONLY)
	PP10690	SCREW 6-32 X 1/2 TRUSS HEAD PHILLIPS ZN (USED WITH 60108601 ONLY)
19	PP11337	RECEPTACLE 10A-250V IEC-320 SNAP-IN

Entrance Box Drawing F

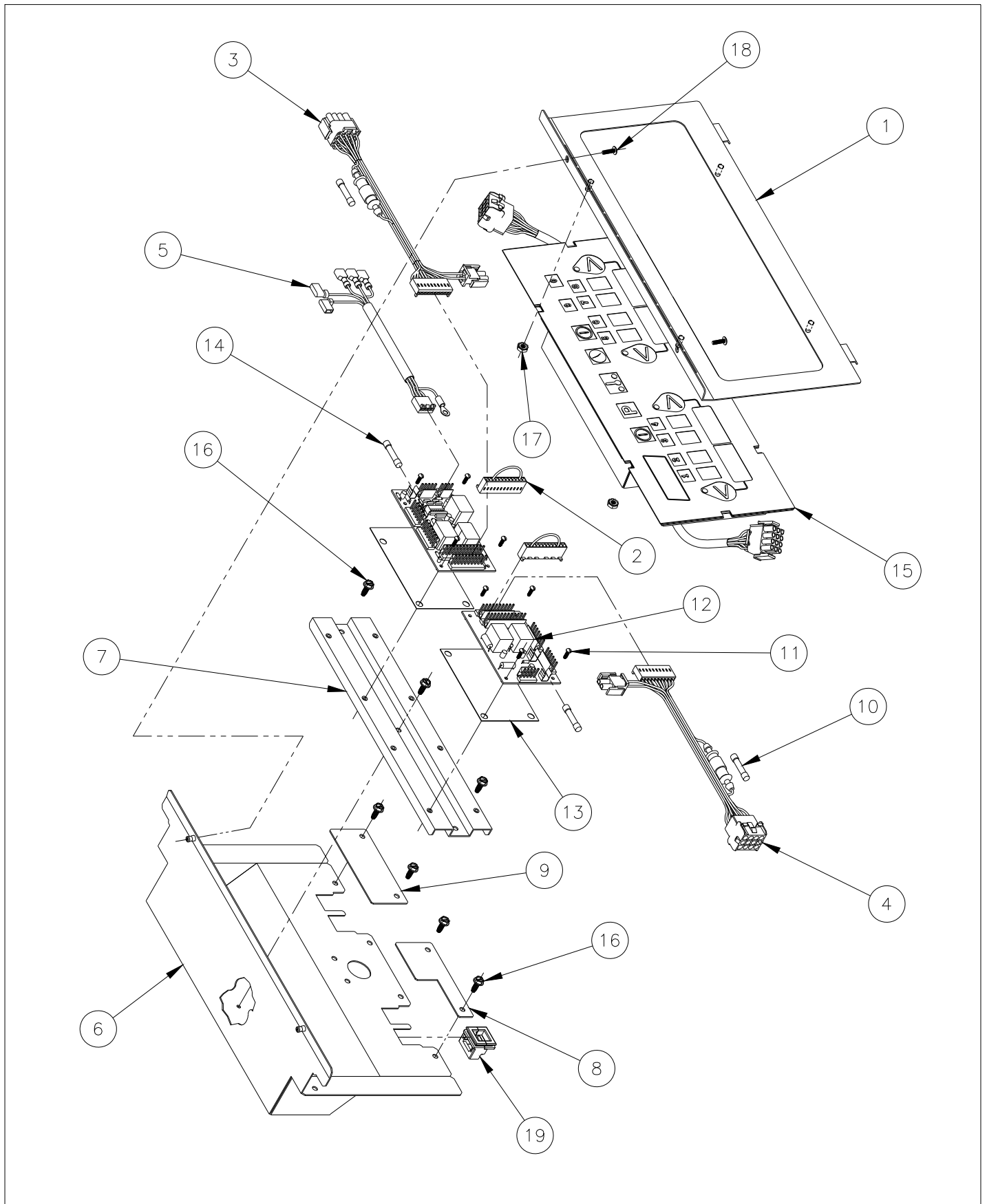


G) FRONT PANEL and CONTROL BOX

Front Panel and Control Box Drawing G Parts List

ITEM #	PART #	PART DESCRIPTION
1	B3631303-C	FRONT PANEL BEZEL WELDMENT
2	B6747001	WIRING RELAY BOARD NO BACK-UP OPTION
3	B6750701	WIRING RELAY BOARD-TO-CONTROL RH MGIIT
	B6760301	WIRING RELAY BOARD-TO-CONTROL RH w/HOOD INTRLCK MGIIT
4	B6750801	WIRING RELAY BOARD-TO-CONTROL LH MGII/-F, MGIIT
	B6760401	WIRING RELAY BOARD-TO-CONTROL LH w/HOOD INTRLCK MGII/-F, MGIIT
5	B6760501	WIRING HARNESS SCB
6	A2035501-C	CONTROL BOX
7	A2035601-C	CONTROL BOX HEAT SHIELD
8	A2035701-C	CONTROL BOX CABLE RETAINER
9	A2035703-C	CONTROL BOX CABLE RETAINER
10	60040701	FUSE GLASS 0.062A FAST-ACTING 1/4 X 1-1/4
11	60066801	SCREW 4-40 X 3/8 ROUND HEAD SLOTTED ZN
12	60127301	RELAY BOARD 24V CLASS 2
	60144001	RELAY BOARD 24V CLASS 2 SCB
13	60132601	RELAY BOARD INSULATION
	60132602	RELAY BOARD INSULATION SCB
14	60132703	FUSE CERAMIC 2.5A FAST-ACTING 1/4 X 1-1/4
15	60137701	EXPANDED MENU COMPUTER
16	P0075400	SCREW 10-24 X 1/2 SELF TAPPING
17	P0092300	NUT HEX (KEP) 10-24 ZN
18	PP10690	SCREW 6-32 X 1/2 TRUSS HEAD PHILLIPS ZN
19	60130501	STRAIN RELIEF LAY-IN

Front Panel and Control Box Drawing G



H) CORD BOX

Cord Box Drawing H Parts List

ITEM #	PART #	PART DESCRIPTION
1A	B6751301	POWER CORD 3-WIRE HARMONIZED 16A w/148 PLUG
	B6751302	POWER CORD 3-WIRE HARMONIZED 16A NO PLUG
	B6751701	POWER CORD DOMESTIC 18A NO HOOD NEMA 5-15P
1B	60137201	POWER CORD 5-WIRE w/PLUG NEMA L21-20P
2	A1846201	CABINET RELAY BOX CORD MOUNT
3	A1846301	CABINET RELAY BOX HOOD
4	A1846401	CABINET RELAY BOX COVER
5	A1846501	CABINET RELAY BOX COVER PLATE
6	60137301	RELAY 24VDC SPST-NO w/MOUNTING TAB
7	P0091100	NUT HEX (KEP) 6-32 ZN
8	PP10023	SCREW 10-24 X 3/8 SELF TAPPING
9	PP10089	MOLEX CONNECTOR JACK 3-SOCKET
10	PP10687	SCREW 6-32 X 5/16 TRUSS HEAD PHILLIPS ZN
11	PP10752	SCREW 10-32 X 1/2 PAN HEAD PHILLIPS ZN THREAD FORMING
12	PP11337	RECEPTACLE 10A-250V IEC-320 SNAP-IN

I) FRYER DRAIN LINE

Fryer Drain Line Drawing I Parts List

ITEM #	PART #	PART DESCRIPTION
1	A7022201	FILTER DRAIN FLANGE TEE ADJUSTABLE
2	A7022101	FILTER DRAIN SEAL FERRULE
3	B6665101	FILTER DRAIN ELBOW MGII/-FF, MGII/-SF
4	60088002	SCREW 3/8-16 X 1-1/4 HEX HEAD CAP ZN
5A	60068303	TEFLON O-RING, 3" X 3.25 OD (WHITE)
5B	60068302	VITON O-RING (BLACK)
6	B6664701	FILTER DRAIN LINE DOWN SPOUT MGII/-FF
	B6670401	FILTER DRAIN LINE DOWN SPOUT MGII/-SF
7	60137501	STEEL PLUG, 1/2NPT INTERNAL HEX
8	B6665201	FILTER DRAIN TEE WELDMENT
9	60059302	SLEEVE DRAIN LINE GASKET 2.875 ID X 2
10	60127702	QUICK RELEASE BAND CLAMP 3.25 X 2
11	A7022407	FILTER DRAIN LINE TUBE MGII/-FF
	A7022409	FILTER DRAIN LINE TUBE MGII/-SF, MGII/-FS
	A7022411	FILTER DRAIN LINE TUBE MGII/-SS
12	A7021701	FILTER NIPPLE ADAPTER 1-1/4 NPT
13	B6673301	FILTER DRAIN TEE OUTLET MGII/-FS, MGII/-SS
14	B6666801	FILTER DRAIN ELBOW MGII/-FS, MGII/-SS
15	B6666901	FILTER DRAIN TEE MGII/-FS, MGII/-SS
16	P0082700	LOCK WASHER 3/8 SPLIT ZN
17	PP10177	PROTECTION CAP WHITE VINYL

Fryer Drain Line Drawing I

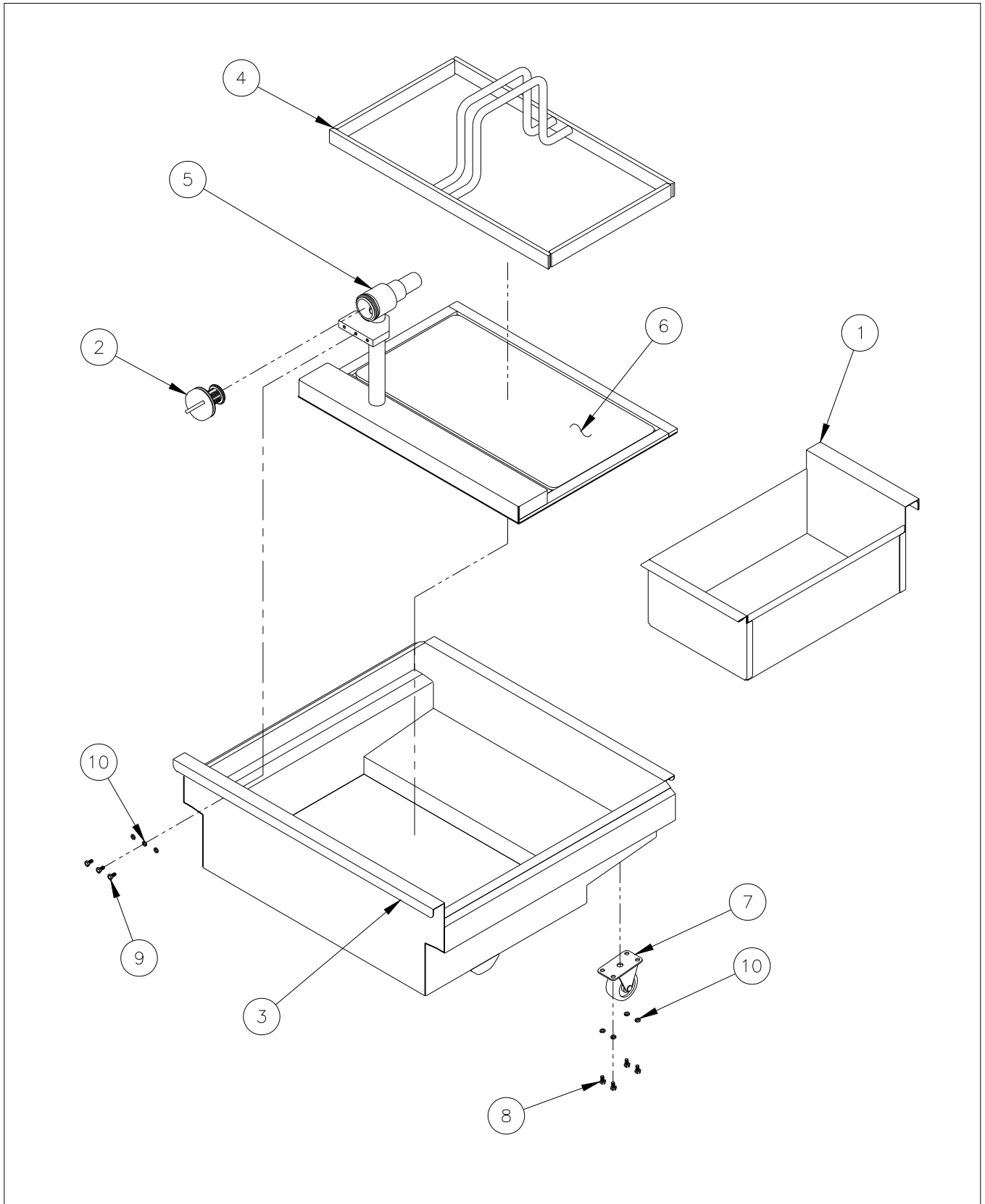


J) FILTER ASSEMBLY

Filter Assembly Drawing J Parts List

ITEM #	PART #	PART DESCRIPTION
1	B6677201-C	FILTER CRUMB CATCH WELDMENT
2	B6671202	STRAINER CAP ASSEMBLY
3	B6673401	FILTER PAN WELDMENT
4	B6673501	FILTER HOLD DOWN WELDMENT
5	B6673601	FILTER PICKUP WELDMENT
6	A7008302	FILTER MEDIA SUPPORT
7	60131401	2.5" RIGID CASTER
8	P0011300	SCREW 10-24 X 3/8 INDENTED HEX HEAD
9	P0112000	SCREW 10-24 X 1/2 HEX HEAD CAP SST
10	PP11208	LOCK WASHER #10 SPLIT SST

Filter Assembly Drawing J

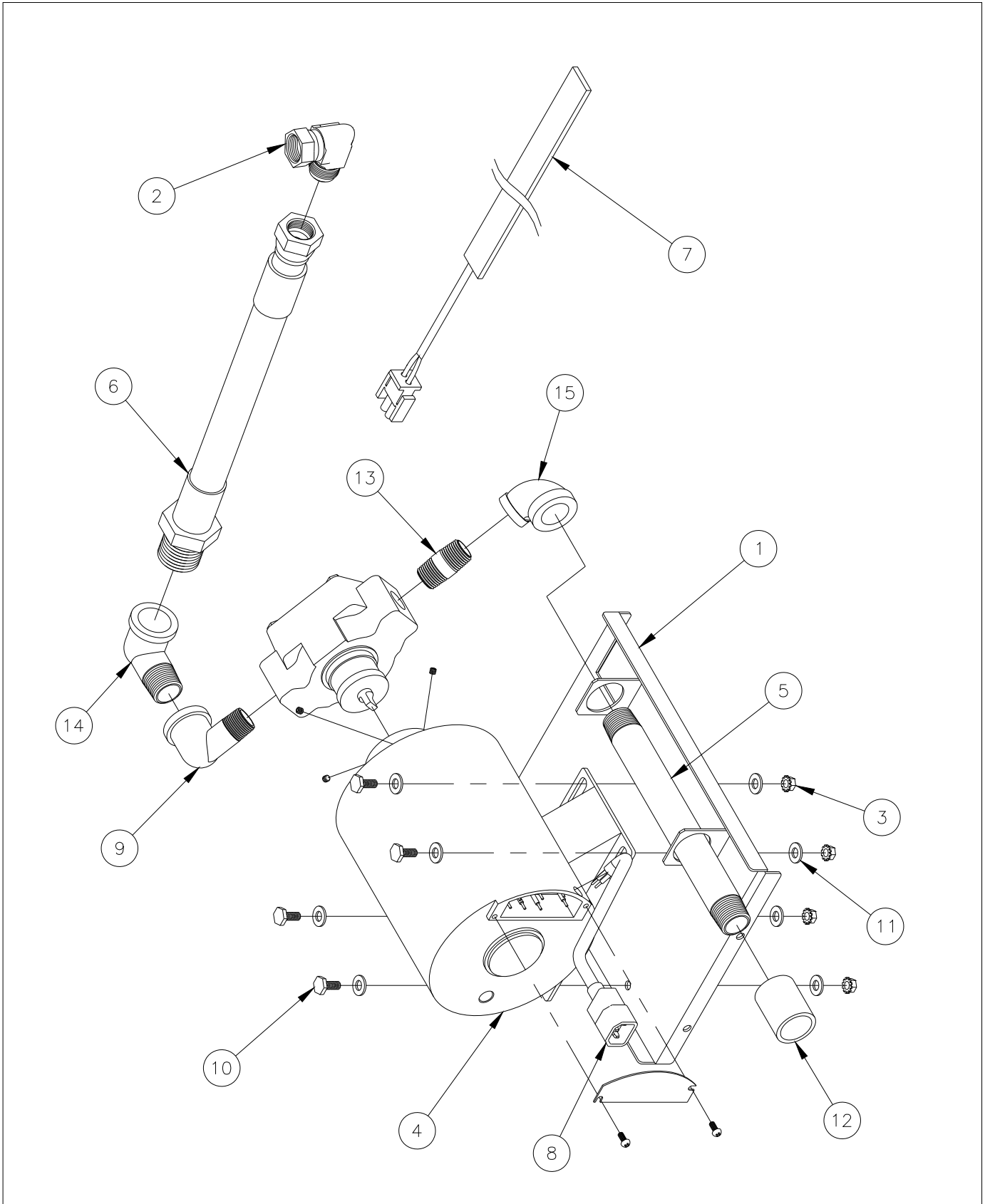


K) PUMP ASSEMBLY

Pump Assembly Drawing K Parts List

ITEM #	PART #	PART DESCRIPTION
N/A (INCLUDES ITEMS 1-15)	B6673201-C	FILTER PUMP ASSEMBLY 115V W/O HEAT TAPE
	B6673202-C	FILTER PUMP ASSEMBLY 220V W/O HEAT TAPE
	B6673203-C	FILTER PUMP ASSEMBLY 240V W/O HEAT TAPE
	B6673204-C	FILTER PUMP ASSEMBLY 115V WITH HEAT TAPE
	B6673205-C	FILTER PUMP ASSEMBLY 220V WITH HEAT TAPE
	B6673206-C	FILTER PUMP ASSEMBLY 240V WITH HEAT TAPE
1	A7027801-C	FILTER PUMP MOUNTING PLATE
2	A8033801	ELBOW 15/16 FEMALE X 15/16 MALE FLARED
3	60069101	NUT HEX 1/4-20 WITH CENTERLOCK ZN
4	60130803	PUMP MOTOR ONLY 0.3HP 115/230V (50/60Hz)
	60130804	PUMP MOTOR ONLY 0.3HP 240V (50Hz)
	60130806	PUMP ASSEMBLY 5 GPM 0.3HP 115/230V (50/60Hz)
	60130807	PUMP ASSEMBLY 5 GPM 0.3HP 240V (50Hz)
	PP10417	PUMP HEAD ONLY 5 GPM (NO MOTOR)
5	60131301	NIPPLE 3/4 NPT X 9 LG BLACK IRON
6	60132201	REINFORCED HOSE 3/4 FNPT SWIVEL X 3/4 MNPT
7	60133505	HEATER TAPE 33W 120V 1/2 X 48
	60133506	HEATER TAPE 33W 240V 1/2 X 48
8	60133901	POWER CORD MALE IEC-320 16-3 AWG
9	60136801	STREET ELBOW 90° 3/4 FNPT X 1/2 MNPT BLACK IRON
10	P0020600	SCREW 1/4-20 X 5/8 HEX HEAD CAP ZN
11	P0080650	FLAT WASHER 1/4 ZN
12	P7036603	FILTER INLET COUPLING 3/4 NPT CRS
13	P7037092	NIPPLE 1/2 NPT X 1-1/2 LG BLACK IRON
14	P7037751	STREET ELBOW 90° 3/4 NPT BLACK IRON
15	PP10485	ELBOW 90° 3/4 FNPT X 1/2 MNPT BLACK IRON

Pump Assembly Drawing K

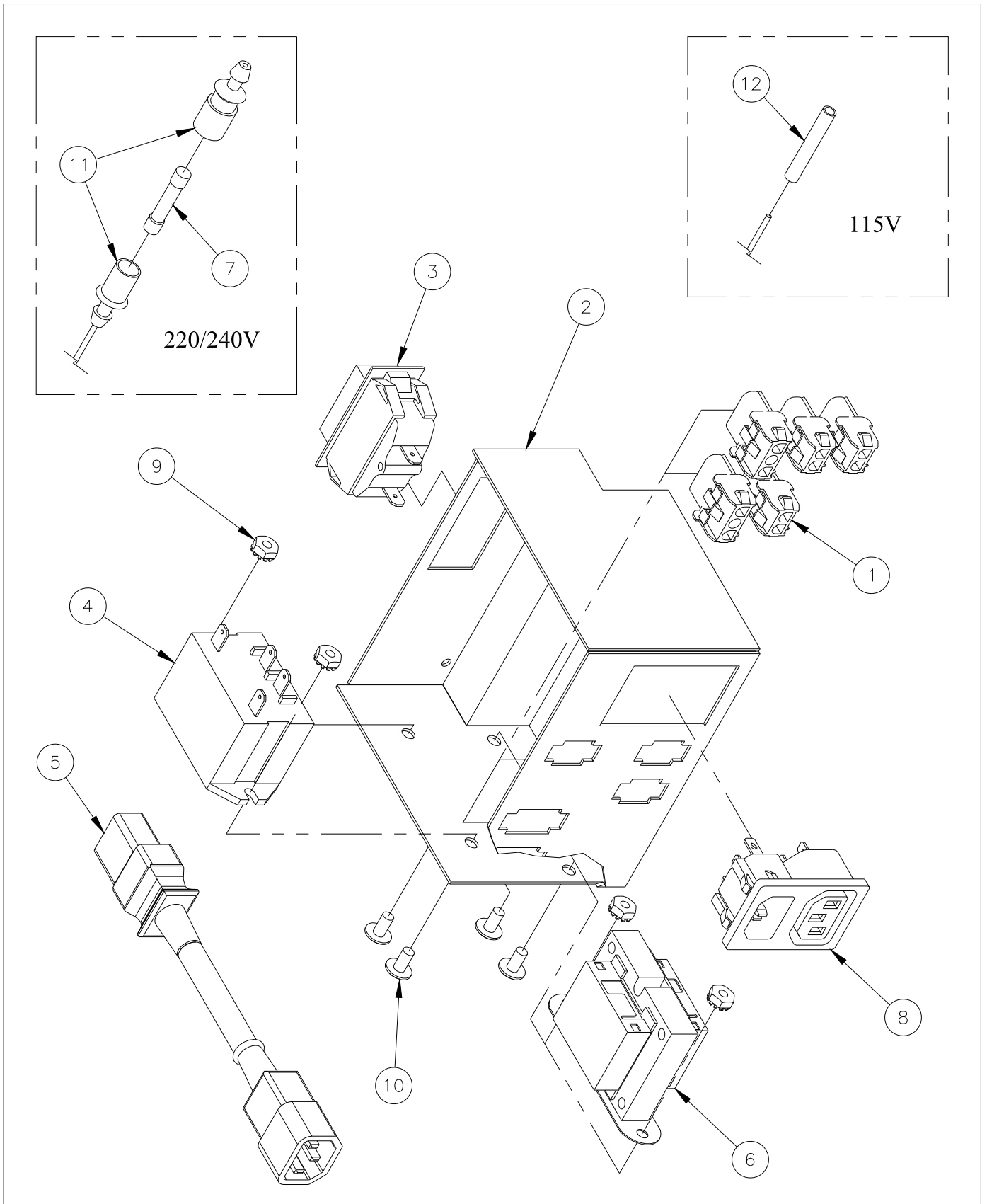


L) PUMP CONTROL BOX

Pump Control Box Drawing L Parts List

ITEM #	PART #	PART DESCRIPTION
N/A (INCLUDES ITEMS 1-12)	B6673001-C	FILTER PUMP CONTROL BOX ASSEMBLY 115V
	B6673002-C	FILTER PUMP CONTROL BOX ASSEMBLY 220/240V
1	B6751601	WIRE HARNESS FILTER PUMP CONTROL BOX
2	A7027701-C	HOUSING-BOX FILTER PUMP CONTROL
3	60078502	CIRCUIT BREAKER ROCKER DPST 250V 5A (220/240V)
	60077901	CIRCUIT BREAKER ROCKER SPST 250V 10A (115V)
4	60104701	RELAY DPST 30A 24VAC (220/240V)
	PP11058	RELAY SPST 30A 24VAC (115V)
5	60128403	JUMPER CORD M/F IEC-320 16-3 AWG X 34"
6	60130301	TRANSFORMER 5VA (115V)
	60130302	TRANSFORMER 5VA (220/240V)
7	60132701	FUSE CERAMIC 0.2A TD .25 X 1.25 (220/240V)
8	60148401	POWER CONNECTOR INLET & OUTLET IEC-320 (REPLACES 60130701, NEW A7027701-C REQUIRED PRIOR TO 6/05)
9	P0092300	NUT HEX (KEP) 10-24 ZN
10	PP10693	SCREW 10-24 X 3/8 TRUSS HEAD PHILLIPS ZN
11	PP10765	FUSE HOLDER IN-LINE 3AG FUSE (220/240V)
12	PP11228	TERMINAL BUTT SPLICE BLUE 150°C (115V)

Pump Control Box Drawing L

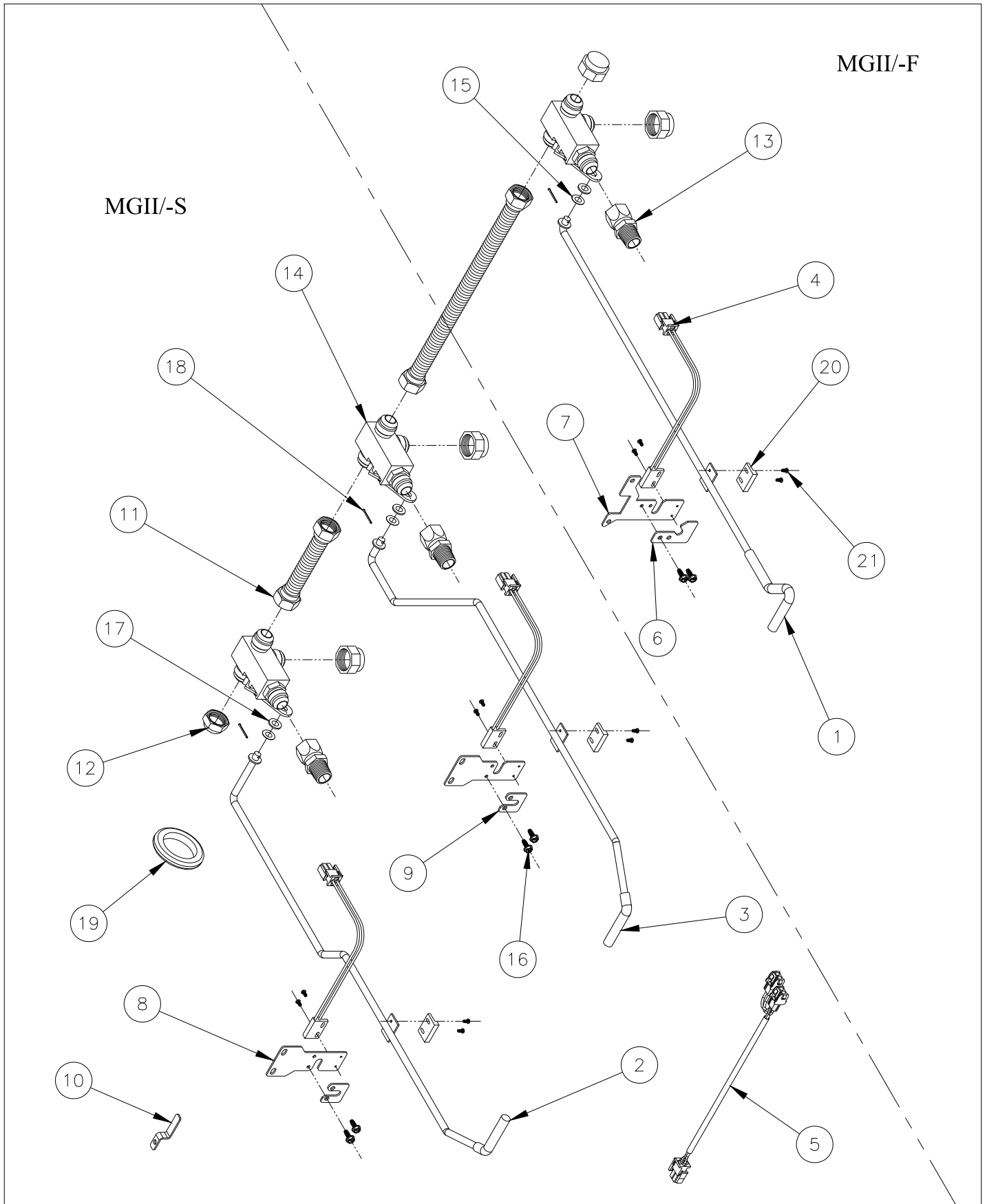


M) RETURN PIPING

Return Piping Drawing M Parts List

ITEM #	PART #	PART DESCRIPTION
1	B4004501	FILTER RETURN HANDLE MGII/-F
2	B4004601	FILTER RETURN HANDLE LEFT-HAND MGIIIT
3	B4004701	FILTER RETURN HANDLE RIGHT-HAND MGIIIT
4	B5305001	DRAIN VALVE INTERLOCK ASSEMBLY
5	B6746301	WIRE HARNESS RETURN OR HOSE JUMPER 24V
6	A7020501-C	FILTER RETURN HANDLE BRACKET COVER
7	A7028001-C	FILTER RETURN HANDLE BRACKET MGII/-F
8	A7028501-C	FILTER RETURN HANDLE BRACKET MGIIIT
9	A7028601-C	FILTER RETURN FRONT BRACKET MGIIIT
10	A1844401-C	CABLE RETAINER
11	60128002	FLEXIBLE TUBING w/FITTINGS 5" LONG NON-GAS INSIDE MGII/-SS
	60128006	FLEXIBLE TUBING w/FITTINGS 8.5" LONG NON-GAS MGII/-SS
	60128007	FLEXIBLE TUBING w/FITTINGS 12.5" LONG NON-GAS MGII/-FS, MGII/-SF
	60128008	FLEXIBLE TUBING w/FITTINGS 15.5" LONG NON-GAS MGII/-FF
12	60130001	FILTER RETURN VALVE END CAP
13	60130101	ADAPTER FITTING w/SWIVEL 1/2 NPT
14	60131801	FILTER RETURN BALL VALVE 3-WAY w/RH HANDLE
15	60131901	SPRING WASHER 5/16-ROD 5/8-HOLE
16	P0075400	SCREW 10-24 X 1/2 SELF TAPPING
17	P0080750	FLAT WASHER 5/16 ZN
18	P0190200	COTTER PIN Ø1/16 X 3/4 LONG ZN
19	P6071228	GROMMET RUBBER 2.5" OD
20	PP10263	PROXIMITY ACTUATOR SWITCH
21	PP10266	SCREW 4-40 X 1/4 ROUND HEAD SLOTTED ZN

Return Piping Drawing M

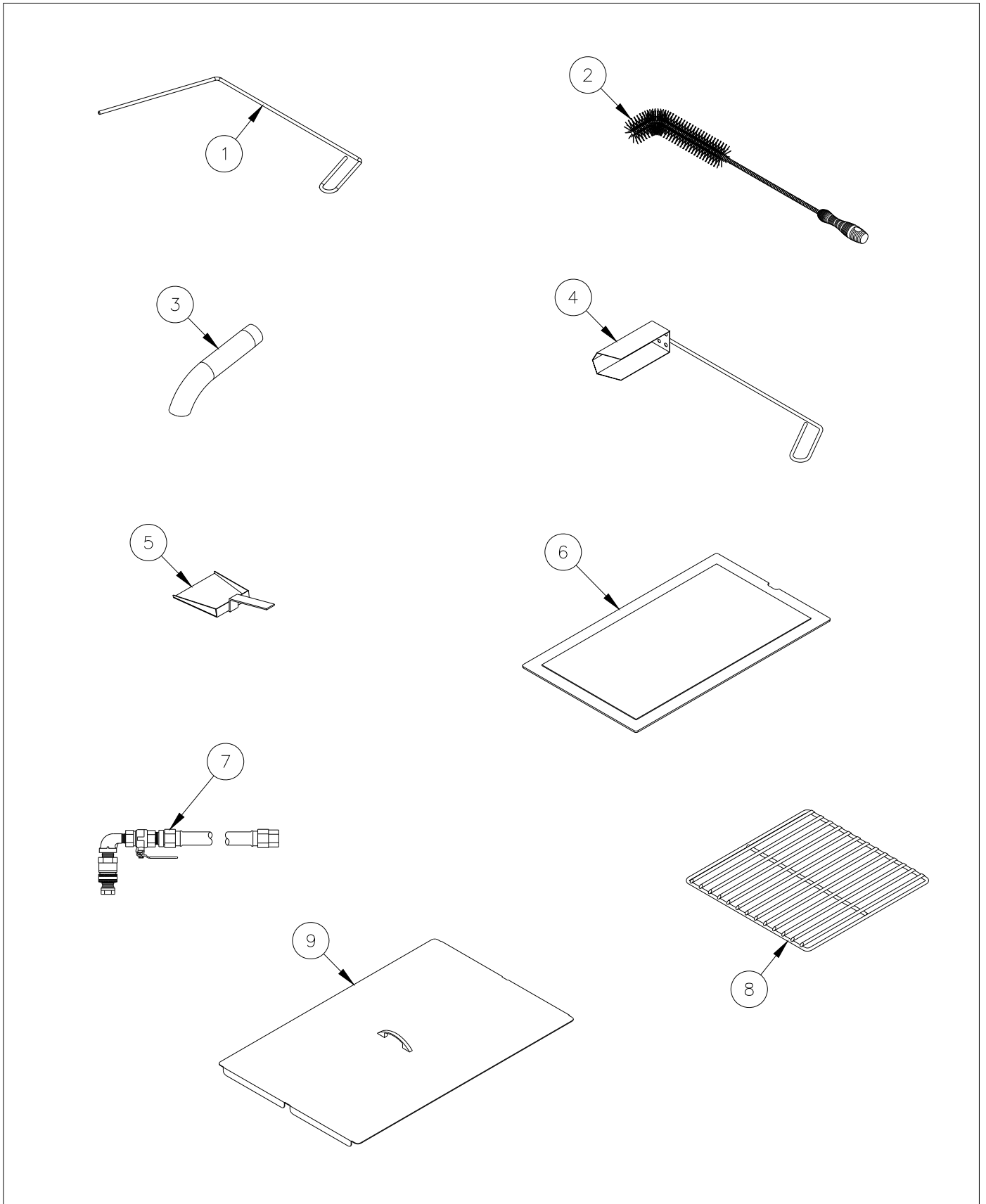


N) ACCESSORIES

Accessories Drawing N Parts List

ITEM #	PART #	PART DESCRIPTION
1	A3301001	CLEAN-OUT ROD
2	PP10056	BRUSH NYLON FRYER-CLEANER
3	A2510101	TANK FITTING NIPPLE DRAIN OUT 1.25 CURVED
4	B5008101	FRYER CRUMB SCOOP 1-3/8 WIDE
5	B6681201	FILTER CRUMB SCOOP PAN SST
6	PP11273	FILTER PAD UNIVERSAL 11 X 19
	PP11323	FILTER PAPER HEAVY-DUTY 11 X 19
7	PP11122	GAS HOSE WITH VALVE 1" X 34"
8	P6073148	TUBE RACK MGII
	B4511801	TUBE RACK MGIIIT
9	B2101503-C	TANK COVER ASSEMBLY MGII

Accessories Drawing N





In the event of problems with or questions about your order, please contact the Pitco Frialator factory at
(603)225-6684 World Wide
www.pitco.com

In the event of problems with or questions about your equipment, please contact the Pitco Frialator Authorized Service and Parts representative (ASAP) covering your area, or contact Pitco at the numbers listed to the left.

MAILING ADDRESS – P.O. BOX 501, CONCORD, NH 03302-0501
SHIPPING ADDRESS – 10 FERRY ST., CONCORD, NH 03301