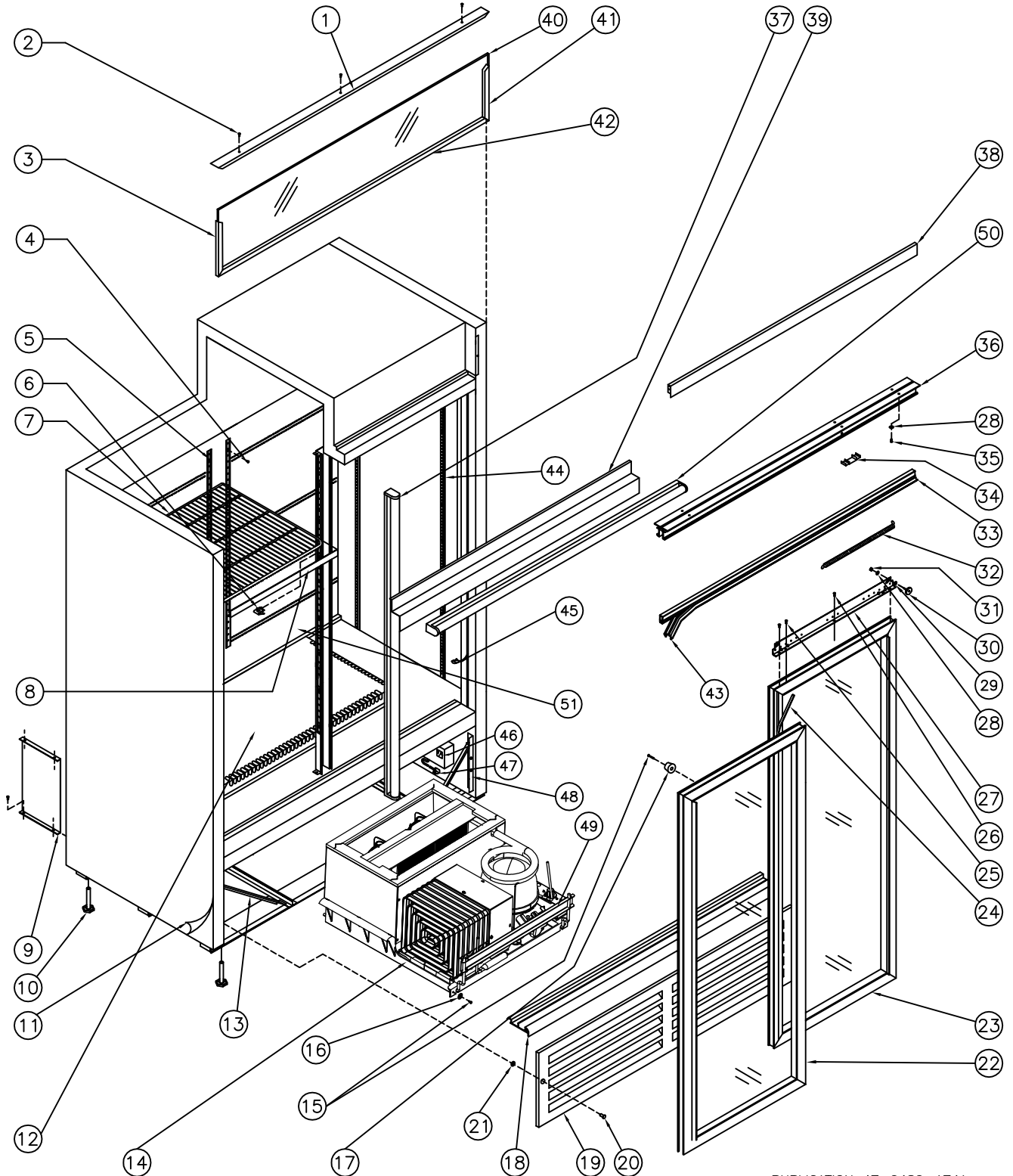


QBD<sup>®</sup> Cooling Systems

31 BRAMSTEELE ROAD  
BRAMPTON, ONTARIO  
L6W 3K6

TEL: (905) 459-0709  
FAX: (905) 459-1478

COOLER: CD40  
34-7040 120V, 60Hz





**Cooling Systems Inc.**

31 Bramstele Rd  
Brampton, Ontario, Canada  
L6W 3K6

Telephone: (905) 459-0709  
Toll Free: (800) 633-3005  
FAX: (905) 459-1478  
[info@qbd.com](mailto:info@qbd.com)  
[www.qbd.com](http://www.qbd.com)

# CD40 Cooler

(34-7040-XXX) 120V, 60 Hz.

| Item No. | Part No.           | Pepsi Part No. | Description                       | Item No.    | Part No.           | Pepsi Part No. | Description                      |
|----------|--------------------|----------------|-----------------------------------|-------------|--------------------|----------------|----------------------------------|
| 1        | 47-8832-039        |                | Cover, CD40 Top Sign              | 26          | 53-0301-021        |                | SCW SM 8 x .500 'AB' PH TR HD    |
| 2        | 53-0301-021        |                | SCW SM 8x0.500 AB PH TR HD        | 27          | 47-0034-124        |                | Bracket, CD40 Door Hanging       |
| 3        | 47-8607-039        | 1001716        | Frame, DC45 LH Top Sign           | 28          | <b>53-0267-006</b> | 83974          | Washer ¼ Split – Lock Zinc       |
| 4        | 47-0400-007        | 510282         | SCW, Pilaster Strip "Custom"      | 29          | <b>53-0138-013</b> | 1006114        | Washer ¼ Int-Ext A               |
| 5        | 47-0034-420        |                | Pilaster Strip 51" Aluminum       | 30          | <b>47-0530-088</b> | 69715          | Wheel Sliding Door 1"Dia ¼ - 20  |
| 6        | <b>53-0377-032</b> | 510362         | Bracket (clip) Shelf Support      | 31          | <b>47-0360-036</b> | 1006115        | Nut ¼ - 20 Hex 2 Way Lock Zinc   |
| 7        | 47-0200-193        | 1009988        | Shelf Standard CD40               | 32          | <b>53-0149-076</b> | 82310          | Spring Door DC40/49              |
| 8a       | 47-0130-609        |                | Price Holder CD40/41 20" Black    | 33          | <b>47-7393-239</b> | 1008150        | Seal Holder Door DC40            |
| 8b       | 47-0130-610        |                | Price Holder CD40/41 20" Blue     | 34          | <b>47-7386-039</b> | 67589          | Extrusion Track Filler .875      |
| 9        | 47-0034-415        |                | Support CD Brace                  | 35          | <b>47-0264-308</b> | 83973          | SCW MA ¼ - 20x.750 PAN HD Quad   |
| 10       | 47-0530-089        | 510204         | Level Leg 0.500x3.000x1.375 AF    | 36          | <b>47-0031-570</b> |                | Track Door 43" LG DC40           |
| 11       | 47-8148-932        | 1001787        | Decal, DC45 Side Pepsi            | 37          | <b>47-0530-571</b> | 1005656        | LED Lamp 16 Watts                |
| 12       | 47-0035-103        | 1022158        | Duct, CD Large Air                | 38          | 47-8829-039        |                | Cover, CD40 Wheel Black          |
| 13       | -----              |                | Not Applicable On CD40            | 39          | 47-0034-115        |                | Reflector, CD40 Top Sign         |
| 14a      | 47-0011-207        | 1004668        | Ref. Chassis ½ HP CD Tecumseh     | 40a         | 47-8834-633        |                | Lens, CD40/41 White              |
| 14b      | <b>47-0011-377</b> |                | Ref. Chassis ½ HP CD Embraco      | 40b         | 47-8834-932        |                | Lens, CD40/41 Pepsi              |
| 15       | <b>20-0468-012</b> |                | SCW SM 8x0.750nPH TR HD           | 41          | 47-8606-039        | 1002297        | Frame, DC45 RH Top Sign          |
| 16       | 18-6147-002        |                | Washer 5/16 Bolt Size 7/8" OD     | 42          | 47-8095-139        | 1000885        | Frame, CD40 Bottom Top Sign      |
| 17       | 47-0120-075        | 1024709        | Bumper, Rubber Stopper #RB-186    | 43          | <b>47-7359-139</b> | 1006617        | Seal Foam Door Horiz 96"         |
| 18       | 47-8093-239        |                | Bottom, CD40 Guide                | 44          | <b>53-0377-031</b> | 80230          | Pilaster Strip 52" Aluminum      |
| 19       | 47-8828-039        |                | Grill, CD40 Front Black           | 45          | <b>47-7379-139</b> | 1008528        | Gasket Foam Vert. C-Fold 53"     |
| 20       | 47-0254-007        |                | SCW MA 10x32x0.750 PH PAN HD      | 46          | <b>47-0440-007</b> | 1003097        | Outlet, 3 Wire                   |
| 21       | 47-0530-639        |                | Nut, Push Faster                  | 47          | <b>18-7218-001</b> | 1007217        | Cord, Power 14/3 SJTW-A 12'      |
| 22       | 47-7652-739        |                | Door Assy. CD40 LH                | 48          | 47-0034-093        | 1008884        | Support CD Grill                 |
| 23       | 47-7651-739        | 1024146        | Door Assy. CD40 RH                | 49          | 47-0033-410        | 1007047        | Bracket, CD 1/3 HP Lift Rod Lock |
| 24       | <b>47-7361-039</b> | 69563          | Seal Foam Door Vert (5 Ft. Req'd) | 50          | <b>47-0530-570</b> | 1006403        | LED lamp 13 Watts                |
| 25       | <b>47-0400-019</b> |                | SCW TR 8-32x0.500 Slot Hex HD     | 51          | 47-0034-506        |                | Panel, CD40/41 Back Discharge    |
|          |                    |                |                                   | 47-0520-252 | 1008770            |                | Kit, Electrics for TPB9423YAA    |
|          |                    |                |                                   | 47-0520-271 |                    |                | Kit, Electrics for FFU130HAX     |

**Note: Embraco Chassis went into production on 01-DEC-15  
Starting Serial # 1DU151204326236**

**Accessories:**

|                    |         |                                    |
|--------------------|---------|------------------------------------|
| 47-0011-307        | 1024707 | Shelf, CD40/41 600ml Gravity       |
| 47-0060-168        | 1005324 | Gasket, Seal Refer & Cab CD 1/2 HP |
| 47-0130-441        |         | Shelf Glide CD45 Blue              |
| W47-0130-441       |         | Shelf Glide CD45 White             |
| <b>47-0520-077</b> | 81272   | Lock & Key Assy Sliding Door       |
| <b>47-0520-216</b> | 1001844 | Caster Kit – Swivel Type           |
| 47-0520-245        | 1001883 | Kit, Casters Transfer - No Wheels  |
| 47-7353-539        |         | Trim, CD/DC Door Handle            |
| 47-8092-239        |         | Door Track Bottom CD40             |