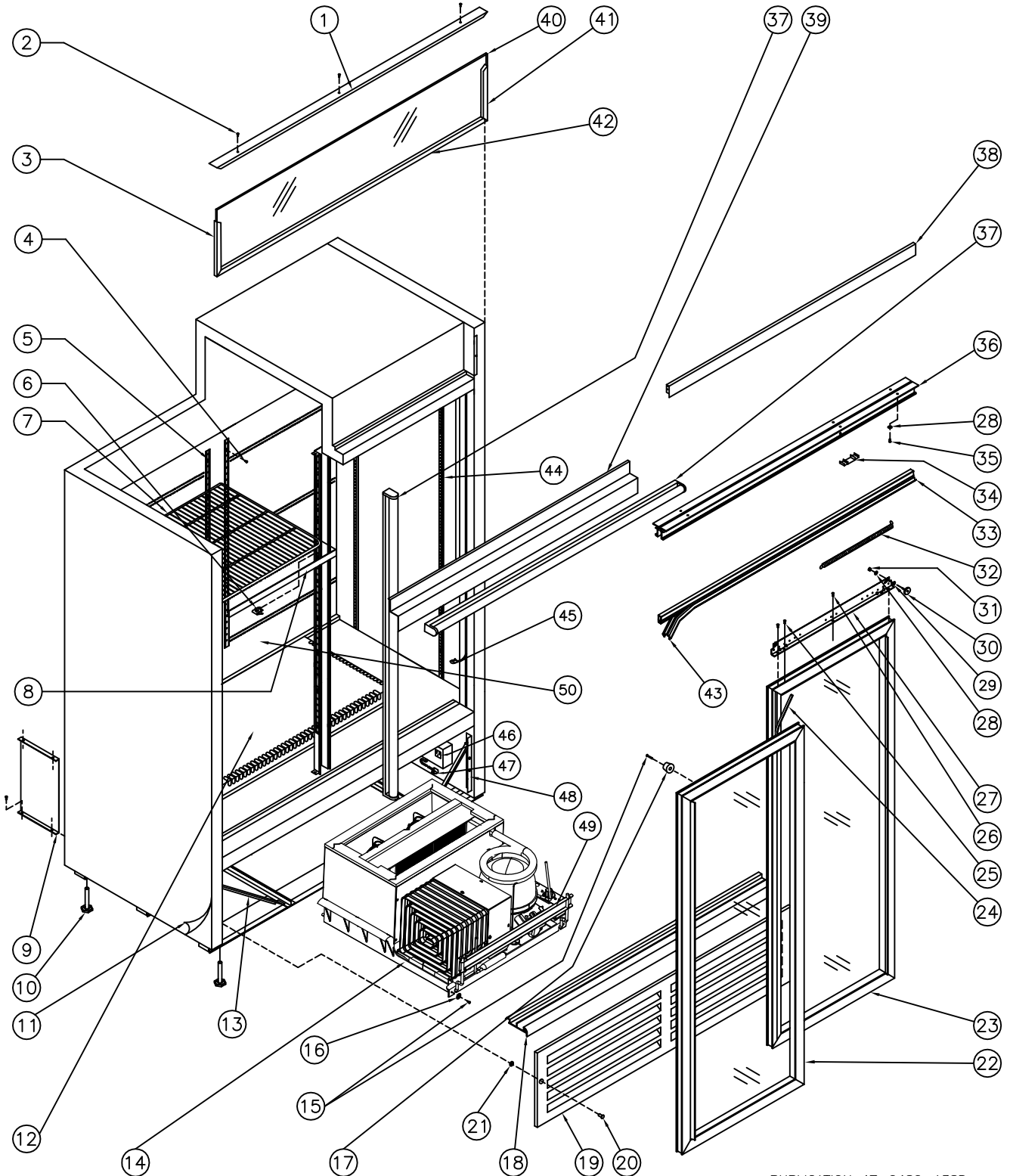


QBD<sup>®</sup> Cooling Systems

31 BRAMSTEELE ROAD  
BRAMPTON, ONTARIO  
L6W 3K6

TEL: (905) 459-0709  
FAX: (905) 459-1478

COOLER: CD45  
34-7045 120V, 60Hz





**Cooling Systems Inc.**

31 Bramstele Rd  
Brampton, Ontario, Canada  
L6W 3K6

Telephone: (905) 459-0709  
Toll Free: (800) 633-3005  
FAX: (905) 459-1478  
[info@qbd.com](mailto:info@qbd.com)  
[www.qbd.com](http://www.qbd.com)

# CD45 Cooler

(34-7045-XXX) 120V, 60 Hz.

Item No.	Part No.	Pepsi Part No.	Description	Item No.	Part No.	Pepsi Part No.	Description
1	47-8098-039	1000864	Cover, DC45 Top Sign	26	53-0301-021		SCW SM 8 x .500 'AB' PH TR HD
2	53-0301-021		SCW SM 8x0.500 AB PH TR HD	27	<a href="#">47-0032-107</a>	1006921	Bracket CD45 Door Hanging
3	47-8607-039	1001716	Frame, DC45 LH Top Sign	28	<a href="#">53-0267-006</a>	83974	Washer ¼ Split – Lock Zinc
4	47-0400-007	510282	SCW, Pilaster Strip "Custom"	29	<a href="#">53-0138-013</a>	1006114	Washer ¼ Int-Ext A
5	47-0034-420		Pilaster Strip 51" Aluminum	30	<a href="#">47-0530-088</a>	69715	Wheel Sliding Door 1"Dia ¼ - 20
6	<a href="#">53-0377-032</a>	510362	Bracket (clip) Shelf Support	31	<a href="#">47-0360-036</a>	1006115	Nut ¼ - 20 Hex 2 Way Lock Zinc
7	<a href="#">47-0200-131</a>	1000382	Shelf Standard DC/CD45/47	32	<a href="#">53-0149-076</a>	82310	Spring Door DC40/49
8a	47-0130-248		Price Holder 22 ¼ Black	33	47-7393-439	1004669	Seal Holder Door DC45 47.5
8b	47-0130-247	1008788	Price Holder 22 ¼ Blue	34	<a href="#">47-7386-039</a>	67589	Extrusion Track Filler .875
9	47-0034-415		Support CD Brace	35	<a href="#">47-0264-308</a>	83973	SCW MA ¼ - 20x.750 PAN HD Quad
10	47-0530-089	510204	Level Leg 0.500x3.000x1.375 AF	36	47-0032-157	1006656	Track Door 47.5" LG CD45
11	47-8148-932	1001787	Decal, DC45 Side Pepsi	37	<a href="#">47-0530-571</a>	1005656	LED Lamp 16 Watts
12	47-0035-103	1022158	Duct, CD Large Air	38	47-8076-039	1003279	Cover, DC/CD45 Wheel Black
13	47-0035-091		Gusset, CD45 Front Beam	39	47-0034-096		Reflector, CD45 Top Sign
14a	47-0011-207	1004668	Ref. Chassis ½ HP CD Tecumseh	40a	47-8096-633		Lens, DC45 White
14b	<a href="#">47-0011-377</a>		Ref. Chassis ½ HP CD Embraco	40b	47-8096-932	69848	Lens, DC45 Pepsi
15	<a href="#">20-0468-012</a>		SCW SM 8x0.750 PH TR HD	41	47-8606-039	1002297	Frame, DC45 RH Top Sign
16	18-6147-002		Washer 5/16 Bolt Size 7/8" OD	42	47-8095-039	1000885	Frame, DC45 Bottom Top Sign
17	47-0120-075	1024709	Bumper, Rubber Stopper #RB-186	43	<a href="#">47-7359-139</a>	1006617	Seal Foam Door Horiz 96"
18	<a href="#">47-8092-139</a>		Bottom, DC45 Guide 47.875"	44	<a href="#">53-0377-031</a>	80230	Pilaster Strip 52" Aluminum
19	47-8080-039	1002210	Grill, DC/CD45 Front Black	45	<a href="#">47-7379-139</a>	1008528	Gasket Foam Vert. C-Fold 53"
20	47-0254-007		SCW MA 10x32x0.750 PH PAN HD	46	<a href="#">47-0440-007</a>	1003097	Outlet, 3 Wire
21	47-0530-639		Nut, Push FASTER	47	<a href="#">18-7218-001</a>	1007217	Cord, Power 14/3 SJTW-A 12'
22	47-7625-739	1008498	Door Assy. DC/CD45 LH	48	47-0034-093	1008884	Support CD Grill
23	47-7624-739	1008189	Door Assy. DC/CD45 RH	49	47-0033-410	1007047	Bracket, CD 1/3-1/2 HP Lift Rod Lock
24	<a href="#">47-7361-039</a>	1003398	Seal Foam Door Vert (5 Ft. Req'd)	50	47-0034-504		Panel CD 45/47 Back Discharge
25	<a href="#">47-0400-019</a>		SCW TR 8-32x0.500 Slot Hex HD				

**Note: Embraco Chassis went into production on 24-JUN-15  
Starting Serial # 1DT150604305538**

**Accessories:**

47-0011-029	1004696	Shelf, CD45/47 600ml Gravity
47-0060-168	1005324	Gasket Seal Refer & Cab CD ½ HP
47-0130-441		Shelf Glide CD45 Blue
<a href="#">47-0520-077</a>	81272	Lock & Key Assy Sliding Door
<a href="#">47-0520-216</a>	1001844	Caster Kit – Swivel Type
<a href="#">47-0520-225</a>		Kit, CD/DC 45 Door Track / Sweep
47-0520-244	1006957	Kit, CD45/47 LED Conversion
47-0520-245	1001883	Kit, Casters Transfer - No Wheels
47-0520-252	1008770	Kit, Electrics for TPB9423YAA
47-0520-271		Kit, Electrics for FFU130HAX
47-7353-539		Trim, CD/DC Door Handle
W47-0130-441		Shelf Glide CD45 White