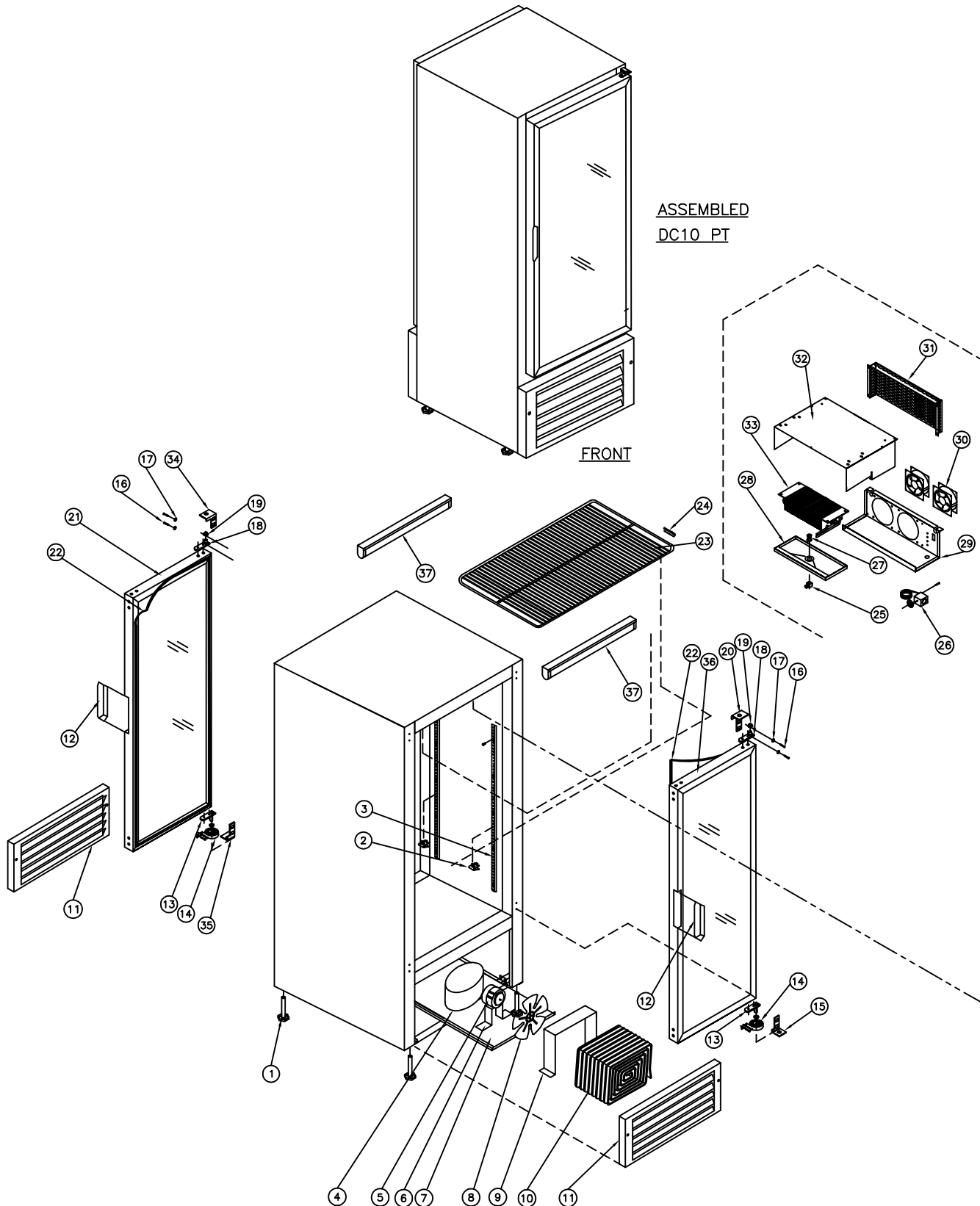


31 BRAMSTEELE ROAD
BRAMPTON, ONTARIO
L6W 3K6

QBD[®] Cooling Systems Inc.

TEL: (905) 459-0709
FAX: (905) 459-1478

COOLER: DC 10PT
DC10PT 34-6811-639 120V, 60Hz





Cooling Systems Inc.

31 Bramsteede Rd
Brampton, Ontario, Canada
L6W 3K6

Telephone: (905) 459-0709
Toll Free: (800) 633-3005
FAX: (905) 459-1478
info@qbd.com
www.qbd.com

DC10PT Cooler

(34-6811-XXX) 120V, 60 Hz.

Item No.	Part No.	Pepsi Part No.	Description	Item No.	Part No.	Pepsi Part No.	Description
1	47-0530-089	510204	Level Leg ½ x 3 x 1.375 AF	19	47-0080-011	1005559	Insert Bronze ⅝ OD x ¼"
2	53-0377-032	510362	Bracket (Clip) Shelf Support	20	47-0090-012	81559	Hinge RH Top Door
3	47-0033-989		Pilaster Strip, 34%"	21	47-7663-739	1021542	Door Assy DC10PT (Back)
4a	47-0530-191	1003060	Compressor, TPA1370YXA Tecumseh	22	47-0140-026	1006805	Gasket Door Mag. SL10 / DC10PT
4b	47-0530-660		Compressor, EGZS60HLP Embraco	23	47-0200-199	60089	Shelf, DC10PT Standard
5	47-0410-053	1004931	Motor, 6W "PSC" Electric	24	47-0034-003		Clip CD12HB Shelf Stopper
6	47-0033-993		Bracket, ¼ HP Cond Motor	25	31-4214-000	1003788	Drain Adapter
7	47-0033-399		Platform, CD ¼ HP Compressor	26	47-0520-258	320820	Danfoss Control
8	47-0530-541	57910	Fan Blade OP OU7737-5 CW	27	31-4213-000	151668	Connector Drain ½ - 20
9	47-0034-272		Shroud, Condenser SL10/DC10PT	28	47-0034-229		Drip Tray, DC10PT Evaporator
10	47-0530-549	1008572	Condenser Coil Lint Forgiven	29	47-0034-230		Shroud, DC10PT Evaporator
11	47-8878-039	1003540	Grill DC10PT Front Black	30	47-0410-039	1009005	Motor Fan Muffin SP101A
12	47-0120-166	1002413	Handle, Recess Dr Charcoal Gray	31	47-0034-227		Cover, SL10 / DC10PT Evap Fans
13	47-0090-082	1009577	Pin Pivot Bottom	32	47-0034-228		Cover, DC10PT Evap Shroud
14	53-0149-069	510108	Spring DC Hinged Door	33	47-0530-206	68266	Evaporator Coil DC12
15	47-0090-013	80977	Hinge RH BTM Door	34	47-0090-014	1001725	Hinge, LH Top Door
16	47-0264-308	83973	SCW MA ¼ - 20 x ¼ PAN HD QUAD	35	47-0090-015	1001724	Hinge, LH Bottom Door
17	53-0267-006	83974	Washer ¼ Split Lock Zinc	36	47-7662-739	1021543	Door Assy DC10PT (Front)
18	47-0090-081	1009576	Pin Pivot Top	37	47-0530-569	1005655	LED Lamp 6 Watts

**Note: Embraco Chassis went into production on 16-MAR-16
Starting Serial # 1DZ160304338925**

Accessories:

47-0034-128	61726	Key, Door T-Handle
47-0130-249	1008789	Price Holder DC40/60 18¾ Blue
47-0130-250	1000819	Price Holder DC40/60 18¾ Black
47-0430-073	510442	Overload, TPA1370YXA Tecumseh
47-0430-074	510444	Relay, TPA1370YXA Tecumseh
47-0430-075	510446	Capacitor, TPA1370YXA Tecumseh
47-0430-076	510506	Cover, Electrics TPA1370YXA
47-0430-233		Overload, EGZS60HLP Embraco
47-0430-242		Relay, EGZS60HLP Embraco
47-0430-243		Capacitor, EGZS60HLP Embraco
47-0520-204		Kit, Comp & Electrics TPA1370YXA
47-0520-207	1008771	Kit, Electrics for TPA1370YXA
47-0520-214	57175	Caster Kit – Uni-Directional
47-0520-215	1001418	Kit, Lock Hasp Single Door
47-0520-216	1001844	Caster Kit – Swivel Type
47-0520-245	1001883	Kit, Casters Transfer - No Wheels