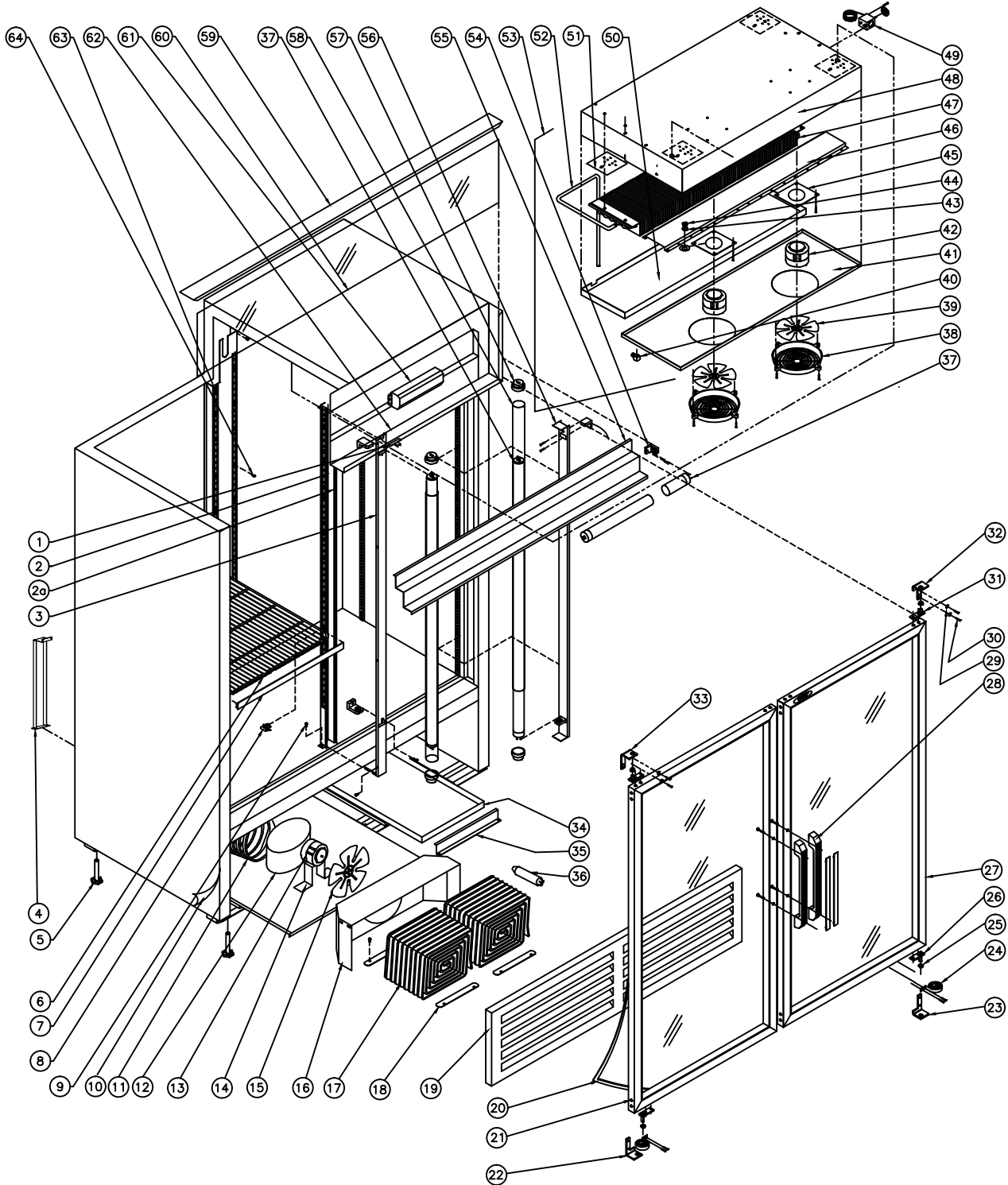


QBD® Cooling Systems

31 BRAMSTEELE ROAD
BRAMPTON, ONTARIO
L6W 3K6

TEL: (905) 459-0709
FAX: (905) 459-1478

COOLER:
DC47 34-6847-XXX





Cooling Systems Inc.

31 Bramstele Rd
 Brampton, Ontario, Canada
 L6W 3K6
 Telephone: (905) 459-0709
 Toll Free: (800) 633-3005
 FAX: (905) 459-1478
info@qbd.com
www.qbd.com

DC47 Cooler

(34-6847-XXX) 120V, 60 Hz.

Item No.	Part No.	Pepsi Part No.	Description	Item No.	Part No.	Pepsi Part No.	Description
1	47-0032-201		Support, DC45 Center Post	32	47-0090-012	81559	Top Hinge Door RH
2a	47-8074-033		Center Post LH	33	47-0090-014	1001725	Top Hinge Door LH
2b	47-8094-033		Center Post RH	34	47-0032-202	1001290	Cond. DC47 Drip Tray
3	47-8112-033		Cover DC47 Center Post	35	47-0032-203		Cond. Hold Down
4	-----		No Longer Applicable	36	47-0011-317		Drier Assy, ¼ Swagged
5	47-0530-089	510204	Level Leg 0.500 x 3.0 x 1.375 AF	37	47-0530-257		Lamp Fluorescent T8-F32
6	47-0200-131	1008499	Shelf DC45	38	47-0120-095		Guard Fan Evap. Black
7a	47-0130-247	1008788	Price Sticker Holder Blue	39	47-0530-531		Fan Blade
7b	47-0130-248		Price Sticker Holder Black	40	31-4214-000	1003788	Drain Adaptor
8	53-0377-032	510362	Bracket (Clip) Shelf Support	41	47-0032-112		Cover DC45/47 Air Tunnel
9	47-0400-021		SCW SM 10 x 0.75 "B" IND SL HX HD	42	47-0410-027	510098	Motor Fan 9 Watts
10	47-8148-932	1001787	Decal, DC45 Side Pepsi	43	47-0460-005	69695	Washer Drain Poly 0.500 ID x 0.687 OD
11	47-0100-138		Suction Line to Compressor	44	31-4213-000	151668	Connector Drain 1/2 - 20
12	47-0530-147	250858	Compressor AKA4476YXA Tecumseh	45	47-0031-011		Evap. Motor Bracket
13	47-0410-027	510098	Motor Fan 9 Watts	46	47-0033-750		Beam Evap Shroud
14	47-0031-801		Cond. Motor Fan Bracket	47	47-0530-267	1022138	Evap. Coil DC45/47
15	33-2420-001		Fan Blade	48	47-0032-111		Shroud DC45/47 Evap.
16	47-0032-172		Cond. Shroud.	49	47-0430-093	83987	Cold control
17	47-0530-259	1004639	Cond. Lint Forging Coil	50	47-0032-113	1003789	Drip Tray, Evap.
18	47-0032-013		Bracket Cond. Hold down	51	47-0033-749		Stiffener Evap. Beam
19	47-8110-039	1000660	Grill Front Black	52	47-0100-139		Suction Line From Evap. Coil
20	47-0140-013	1001712	Gasket DC47HB Door Mac M-218	53	47-0010-632		Shroud DC45/47 Assy. Dual Cond.
21	47-7627-739	1007463	Door Assy DC47 LH	54	47-0440-076	81809	Lamp Holder Euro-type Shunted
22	47-0090-015	1001724	Bottom Hinge Door LH	55	47-8111-033		Top Sign Reflector
23	47-0090-013	80977	Bottom Hinge Door RH	56	47-8034-033	1003943	Lamp Reflector
24	53-0149-069	510108	Door Spring	57	47-0120-114	1020840	Cap, Lamp Protector End-T8
25	47-0080-011	1005559	Insert Bronze	58	47-0120-115		Protector Lamp Tubes-T8
26	47-0090-082	1009577	Pivot Bottom Pin	59	47-8104-039	1000658	Cover Top Sign
27	47-7626-439	1000525	Door Assy DC47 RH	60	47-8096-932	69848	Lens Top Sign Pepsi
28	47-0010-615	59359	Handle Assy Kit	61	47-0530-261	69233	Ballast 4 Lamp
29	53-0267-006	83974	Washer 1/4" Split Lock	62	47-8105-039	1000659	Top Sign Frame
30	47-0264-308	83973	SCW MA 1/4" - 20 x 0.75 PH PAN HD	63	53-0377-031	80230	Pilaster Strip 52" Aluminum
31	47-0090-081	1009576	Pivot Top Pin	64	47-0400-007	510282	SCW Pilaster Strip

47-0520-206 Kit, Electrics for AKA4476YXA

Accessories:

47-0130-441		Shelf Glide CD45 Blue
W47-0130-441		Shelf Glide CD45 White
47-0430-051	1003401	Capacitor AKA4476YXA Tecumseh
47-0430-052	83979	Overload AKA4476YXA Tecumseh
47-0430-170	1003032	Relay AKA4476YXA Tecumseh
47-0520-198		Kit, Cold Control w/Knob 093
47-0520-216	1001844	Caster Kit - Swivel Type
47-0520-218	1005838	Kit, CD Double Hinged Door Lock
47-0520-241		Kit, DC45/47 LED Conversion
47-0520-245	1001883	Kit, Casters Transfer - No Wheels