



QMILK

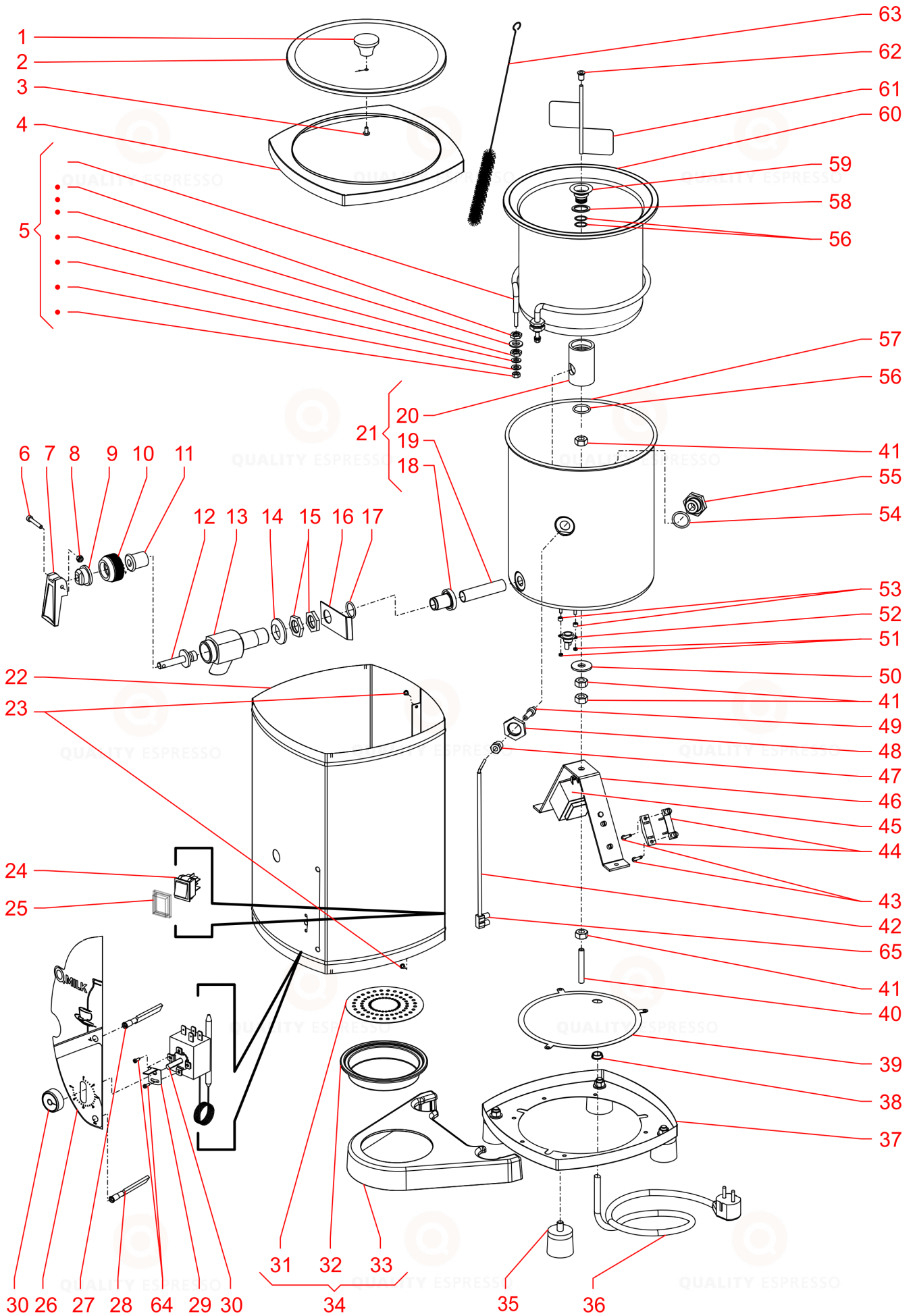


ES Español
EN English

LISTADO DE MÁQUINAS / MACHINES LIST

TQ0003

TQ0103



| POS | REF | DENOMINACIÓN | DESCRIPTION | NOTES |
|-----|--------------|------------------------------------|----------------------------------|-------|
| 1 | 2523/030111 | POMO TAPA | LID KNOB | |
| 2 | 2523/030102 | TAPA QMILK | QMILK LID | |
| 3 | 04591800 | TORNILLO DIN7985 M5x10 mm | DIN7985 M5x10 mm SCREW | |
| 4 | 2523/030108 | CUBIERTA SUPERIOR | UPPER COVER | |
| 5 | 2524/061101 | RESIST.TERMO 230V/1300W | 230V/1300W HEATING ELEMENT | |
| 5 | 2524/061201 | RESIST.TERMO 115V/1300W | 115V/1300W HEATING ELEMENT | |
| 6 | 0005/010617 | TORNILLO DIN912 M4X25 mm | DIN912 M4x25 mm SCREW | |
| 7 | 0005/010613 | MANDO GRIFO | TAP HANDLE | |
| 8 | 0005/010618 | TUERCA DIN 985 M4 | DIN 985 M4 NUT | |
| 9 | 2523/040104 | TAPÓN GUÍA | SQUARE PIN CAP | |
| 10 | 2523/040105 | CABEZA GRIFO | TAP HEAD | |
| 11 | 2523/040102 | JUNTA DE GRIFO | TAP O-RING | |
| 12 | 2523/040103 | EJE DE GRIFO | TAP SHAFT | |
| 13 | 2523/040101 | CUERPO DE GRIFO | TAP BODY | |
| 14 | 2523/030112 | OVALILLO | GASKET | |
| 15 | 2523-040107 | TUERCA M16x1 mm | M16X1 MM NUT | |
| 16 | 08236903 | SOPORTE BULBO TERMO | TERMOSTAT SUPPORT | |
| 17 | 1012/150107 | JUNTA TÓRICA | O-RING | |
| 18 | 2524/021103C | RACORD CONJUNTO SUJECCIÓN TERMO | MILK -WARMER FIXING ASSY FITTING | |
| 19 | 2524/021103B | TUBO CONJUNTO SUJECCIÓN TERMO | MILK -WARMER FIXING ASSY TUBE | |
| 20 | 2524/021103A | CUERPO CONJUNTO SUJECCION TERMO | MILK -WARMER FIXING ASSY BODY | |
| 21 | 2524/021103 | CJ. SUJECCIÓN TERMO | MILK -WARMER FIXING ASSY | |
| 22 | 08885000 | ENVOLVENTE QMILK | QMILK COVER PLATE | |
| 23 | 08324900 | REMACHE PLÁSTICO | PLASTIC RIVET | |
| 24 | 07967020 | INTERRUPTOR 230 V/16A 2 POSICIONES | 230 V/16A 2 POSITIONS SWITCH | |
| 25 | 08291800 | FUNDA INTERRUPTOR | SWITCH PROTECTOR | |
| 26 | 08885100 | ADHESIVO CARÁTULA QMILK | QMILK FRONTPANEL STICKER | |
| 27 | 08836300 | LED NIVEL QMILK | QMILK LEVEL LED | |
| 28 | 08836400 | LED BICOLOR 230V | 230V BI-COLOR LED | |
| 28 | 08836410 | LED BICOLOR 115V | 115V BI-COLOR LED | |
| 29 | 08250508 | TOPE TERMOSTATO | THERMOSTAT STOPPER | |
| 30 | 08885300 | TERMOSTATO | THERMOSTAT | |
| 31 | 0341/030108 | ESCURRIDOR CUBETA DESAGÜE | DRAINAGE PLATE | |
| 32 | 0341/030107A | CUBETA DESAGÜE | DRAIN BOWL | |
| 33 | 08896000 | BASE BANDEJA DESAGÜE | DRAIN TRAY | |
| 34 | 08896100 | CJ. BANDEJA DESAGÜE | DRAIN TRAY ASSY | |
| 35 | 07468002 | PIE DE APOYO | FOOT ASSY | |
| 36 | 09000262 | CABLE ACOMETIDA | MAIN CORD | |
| 37 | 2523/030104 | TAPA INFERIOR | LOWER COVER | |

| POS | REF | DENOMINACIÓN | DESCRIPTION | NOTES |
|-----|--------------|----------------------------------|------------------------------|-------|
| 38 | 08144503 | PASACABLES | CORD RUBBER GROMMET | |
| 39 | 08736500 | TAPA BASE | BASE LID | |
| 40 | 2524/020104 | ESPARRAGO ALLEN DIN 913 M8x60 mm | DIN 913 M8x60 mm ALLEN SCREW | |
| 41 | 0611/010105 | TUERCA D934 M8 | D934 M8 NUT | |
| 42 | 08241705 | SONDA | SENSOR | |
| 43 | 04789913 | TORNILLO DIN7971 3,5x25 mm | DIN7971 3.5x25 mm SCREW | |
| 44 | 07832405 | BRIDA CABLE RED | MAIN CORD FLANGE | |
| 45 | 08241800 | CENTRALITA 230V | 230V MAINBOARD | |
| 45 | 08241810 | CENTRALITA 115V | 115V MAINBOARD | |
| 46 | 2524/020101 | SOPORTE SUJECIÓN DEPÓSITO | WATERTANK FIXING SUPPORT | |
| 47 | 0441/090816D | PRENSA SONDA | SENSOR CLAMP | |
| 48 | 2523/040107 | TUERCA M16X1 mm | M16X1 mm NUT | |
| 49 | 0441/091816B | CASQUILLO ESTRANGULADOR | THROTTLE BUSHING | |
| 50 | 09000084 | ARANDELA DIN 9021 8,4x24x2 mm | DIN 9021 8.4x24x2 mm WASHER | |
| 51 | 04527503 | TUERCA EXAGONAL DIN934 M3 | DIN934 M3 EXAGONAL NUT | |
| 52 | 08291300 | TERMOSTATO | THERMOSTAT | |
| 53 | 08291900 | SEPARADOR TERMOSTATO | THERMOSTAT SPACER | |
| 54 | 1012/150107 | JUNTA TÓRICA | O-RING | |
| 55 | 08320500 | SOPORTE SONDA | SENSOR SUPPORT | |
| 56 | 1012/150107 | TÓRICA | O-RING | |
| 57 | 2524/021106 | DEPÓSITO AGUA | WATERTANK | |
| 58 | 08294400 | ARANDELA PTFE 23x30x2,5 mm | 23x30x2.5 mm PTFE WASHER | |
| 59 | 2524/021106B | RÁCORD DEPÓSITO | TANK FITTING | |
| 60 | 2524/021106 | CONTENEDOR DE LECHE | MILK TANK | |
| 61 | 2525-030101 | C.J. PALA | STIRRING PADDLES ASSY | |
| 62 | 2525-030103 | CASQUILLO GUÍA | GUIDE BUSHING | |
| 63 | 2523-100101 | CEPILLO | CLEANING BRUSH | |
| 64 | 0011/030118 | TORNILLO DIN84 4x6 mm | DIN84 4x6 mm SCREW | |
| 65 | 07389604 | REGLETA | TERMINAL STRIP | |

El Constructor se reserva el derecho de modificar, sin previo aviso, las características de los aparatos presentados en esta publicación; además declina toda responsabilidad por las eventuales inexactitudes imputables a errores de imprenta y/o transcripción de contenidos en la misma.

Las introducciones, los dibujos, las tablas y las informaciones en general contenidos en este fascículo, son de tipo reservado y no se pueden reproducir completamente o en parte, ni comunicar a terceros sin la autorización escrita del Fabricante, el cual tiene la propiedad exclusiva.

The manufacturer reserves the right to modify, without prior notice, the characteristics of the equipment described in this publication; and further declines to accept any responsibility for any inaccuracies contained in this publication which can be ascribed to printing and/or transcription errors.

All instructions, drawings, tables and information contained in this publication are confidential and can neither be reproduced, completely or in part, nor be transmitted to third parties without the written permit of the Manufacturer, who has the sole ownership.

EDICIÓN/EDITION: oct.-21

APROBADO POR/APPROVED BY:

El Responsable



QUALITY ESPRESSO S.A.U.

C/ Motors, 1 - 9 • 08040. Barcelona, Spain

T +34 93 223 12 00

Export T +34 93 394 63 05

@ info@qualityespresso.net

www.qualityespresso.net



QUALITY ESPRESSO

Capture the Essence

La empresa se reserva el derecho a modificar el contenido de este despiece sin previo aviso.
The manufacturer reserves the right to modify the content of this spare parts list without notice.