



# RACA14

Parts List  
16-November-2021



*This parts list is current as of the above revision date.  
See <http://www.rheempartslists.net/92-42800-RACA14.pdf> for the current revision.*

Package Air Conditioners

# Table of Contents

Model Explanation .....	Page 3
<b>Parts Numbers</b>	
Panels - Miscellaneous 024-036 (A Series) .....	Page 4
Panels - Miscellaneous 042-060 (A Series) .....	Page 5
Panels - Miscellaneous 024-048 (B Series) .....	Page 6
Panels - Miscellaneous 060 (C Series) .....	Page 7
Electrical Group (1) .....	Page 8
Electrical Group (2) .....	Page 9
Electrical Group (3) .....	Page 10
Fan Group .....	Page 11
Blower Group (1) .....	Page 12
Blower Group (2) .....	Page 13
Coil Parts (1) .....	Page 14
Coil Parts (2) .....	Page 15
Coil Parts (3) .....	Page 16
Coil Parts (4) .....	Page 17
Compressor Group (1) .....	Page 18
Compressor Group (2) .....	Page 19
Heater Kits .....	Page 20
Accessories .....	Page 20
<b>Drawings/Photographs</b>	
Exploded View .....	Page 21
Control Access Panel, Evap Coil .....	Page 22
Evaporator Coil .....	Page 22
Electrical Control Box (1) .....	Page 23
Electrical Control Box (2) .....	Page 24
Bushings - Bulkhead Wiring .....	Page 25
Blower Assembly .....	Page 26
Coil Frames, Drainpan .....	Page 27
Condenser Coil 2 Ton .....	Page 28
Condenser Coil 2.5 - 3 Ton .....	Page 29
Condenser Coil 3.5 - 4 - 5 Ton .....	Page 30
Compressor and Refrigeration Components .....	Page 31
Limit Control - Blower Shelf .....	Page 32
Evaporator Coil Gaskets .....	Page 33
Heater Mounting - Panels .....	Page 34
Notes/Disclaimer .....	Page 35

**MODEL NUMBER EXPLANATION**

R	A	C	A	1	4	0	3	6	A	J	D	05	1	A	A	-
(1)	(2)	(3)	(4)	(5)			(6)	(7)	(8)	(9)	(10)	(11)	(12)	(13)		

**(1) TRADENAME IDENTIFICATION**

**(2) PRODUCT CLASSIFICATION**

AC = Package Air Conditioner

**(3) CABINET TYPE**

A = Residential Package

**(4) SERIES**

14 = 14 SEER

**(5) COOLING CAPACITY (Ton)**

024 = 2 ton                      042 = 3.5 ton  
 030 = 2.5 ton                  048 = 4 ton  
 036 = 3 ton                      060 = 5 ton

**(6) MAJOR SERIES**

A = 1st Design  
 B = 2nd Design  
 C = 3rd Design

**(7) ELECTRICAL DESIGNATION**

J = 208/230V - 1 PH - 60 HZ  
 C = 208/230V - 3 PH - 60 HZ  
 D = 460V - 3 PH - 60 HZ  
 Y = 575 - 3 PH - 60 HZ  
 S = 200V - 1 PH - 50 HZ  
 T = 220/240V - 1 PH - 50 HZ  
 P = 200/220V - 3 PH - 50 HZ  
 N = 380/415V - 3 PH - 50 HZ  
 V = 380V - 3 PH - 60 HZ

**(8) DRIVE PACKAGE**

A = Belt - Low Static  
 B = Belt - Medium Static  
 C = Belt - High Static  
 D = Direct Drive (PSC)  
 E = Direct Drive VFD  
 F = Belt VFD - Low Static  
 G = Belt VFD - Medium Static  
 H = Belt VFD - High Static  
 T = Constant Torque  
 V = Variable Speed

**(9) HEATING CAPACITY**

00 = no heat  
 05 = 05 kW  
 08 = 08 kW  
 10 = 10 kW  
 15 = 15 kW

**(10) HEAT CONFIGURATION**

1 = Single Stage  
 2 = Two Stage  
 0 = No Heat

**(11) CONTROL**

A = Non-Communicating  
 C = Clear Control

**(12) MINOR SERIES**

A = 1st Design  
 B = 2nd Design

**(13) Option Code**

**SERIAL NUMBER EXPLANATION**

F	0	8	1	3	9	9	9	9
(1)	(2)	(3)	(4)					

**(1) PLANT CODE**

**(2) WEEK (DATE CODE)**

**(3) YEAR**

**(4) PRODUCTION NUMBER**

**Note: For Compressor Identification Number, see Compressor Code on Rating Plate**

No.	Notes	MODEL COOLING CAPACITY MAJOR SERIES	RACA14	RACA14	RACA14		
			024 A	030 A	036 A		
<b>SHEET METAL PARTS, MISCELLANEOUS</b>							
1		Front Base Pan	AS-58628-07H	AS-58628-07H	AS-58628-07H		
2		Base Rail (2)	AE-58562-03	AE-58562-03	AE-58562-03		
3		Base Rail (2)	AE-58562-04	AE-58562-04	AE-58562-04		
4		Back Base Pan	AS-58607-64	AS-58607-64	AS-58607-64		
5		Blower Shelf	AS-58630-01	AS-58630-01	AS-58630-01		
6		Blower Shelf Transition	AS-58607-19	AS-58607-19	AS-58607-19		
7		Divider Panel	AS-58607-03	AS-58607-03	AS-58607-03		
8		Bulkhead Assembly	AS-58607-68	AS-58607-62	AS-58607-62		
9		Heater Mounting Panel	AS-58607-16	AS-58607-16	AS-58607-16		
10		Extension - Heater Mounting Panel	N/A	N/A	N/A		
11		Corner Post	AS-58607-39H	AS-58607-39H	AS-58607-39H		
12		Blower Access Panel	AS-58607-09H	AS-58607-09H	AS-58607-09H		
13		End Panel	AS-58607-04H	AS-58607-04H	AS-58607-04H		
14		Supply Cover - Downflow	AS-58607-06H	AS-58607-06H	AS-58607-06H		
14		Supply Cover - Side Option	AS-58607-35H	AS-58607-35H	AS-58607-35H		
15		Return Cover - Downflow	AS-58607-05H	AS-58607-05H	AS-58607-05H		
15		Return Cover - Side Option	AS-58607-34H	AS-58607-34H	AS-58607-34H		
16		Top Panel	AS-58607-67H	AS-58607-67H	AS-58607-67H		
17		Grille	95-100906-08	95-100906-08	95-100906-08		
18		Filter Access Panel	AS-58607-08H	AS-58607-08H	AS-58607-08H		
19		Condenser Louver Panel	AS-58607-61H	AS-58607-61H	AS-58607-61H		
20		Center Post	AS-58569-06H	AS-58569-06H	AS-58569-06H		
21		Control Access Panel	AS-58568-02H	AS-58568-02H	AS-58568-02H		
22		Control Box (w/o components)	AE-58597-01	AE-58597-01	AE-58597-01		
23		Control Box Cover	AE-58598-01	AE-58598-01	AE-58598-01		
24		Blank-Off Plate (models without heat only)	AS-58607-17	AS-58607-17	AS-58607-17		
25		Heater Kit				See Accessories	
27		Bulkhead Valve (2)	61-22369-04	61-22369-04	61-22369-04		
28		Bulkhead Valve Locknut (2)	63-22368-01	63-22368-01	63-22368-01		
		Bulkhead Valve Cap (2)	83-100635-01	83-100635-01	83-100635-01		
A		Star Bushing	45-18515-01	45-18515-01	45-18515-01		
B		Nylon Snap Bushing	45-17057-02	45-17057-02	45-17057-02		
C		Strain Relief Bushing	45-17055-11	45-17055-11	45-17055-11		
D		Neoprene Gasket - 1/8 x 1/2	68-22079-04	68-22079-04	68-22079-04		
E		Neoprene Gasket - 1/4 x 1/2	68-22079-06	68-22079-06	68-22079-06		
F		Gasket 3/8 x 3/4	68-20243-02	68-20243-02	68-20243-02		
G		Gasket 1/2 x 3/4	68-20243-01	68-20243-01	68-20243-01		

No.	Notes	MODEL COOLING CAPACITY MAJOR SERIES	RACA14	RACA14	RACA14		
			042 A	048 A	060 A		
<b>SHEET METAL PARTS, MISCELLANEOUS</b>							
1		Front Base Pan	AS-58628-07H	AS-58628-07H	AS-58628-07H		
2		Base Rail (2)	AE-58562-03	AE-58562-03	AE-58562-03		
3		Base Rail (2)	AE-58562-04	AE-58562-04	AE-58562-04		
4		Back Base Pan	AS-58607-64	AS-58607-64	AS-58607-64		
5		Blower Shelf	AS-58630-01	AS-58630-01	AS-58630-01		
6		Blower Shelf Transition	AS-58607-19	AS-58607-19	AS-58607-19		
7		Divider Panel	AS-58607-03	AS-58607-03	AS-58607-03		
8		Bulkhead Assembly	AS-58607-55	AS-58607-57	AS-58607-57		
9		Heater Mounting Panel	AS-58607-16	AS-58607-16	AS-58607-16		
10		Extension - Heater Mounting Panel	N/A	AS-58607-42	AS-58607-42		
11		Corner Post	AS-58607-39H	AS-58607-53H	AS-58607-46H		
12		Blower Access Panel	AS-58607-09H	AS-58607-47H	AS-58607-47H		
13		End Panel	AS-58607-04H	AS-58607-48H	AS-58607-48H		
14		Supply Cover - Downflow	AS-58607-06H	AS-58607-06H	AS-58607-06H		
14		Supply Cover - Side Option AKA, BVA	AS-58607-35H	AS-58607-35H	AS-58607-35H		
15		Return Cover - Downflow	AS-58607-05H	AS-58607-05H	AS-58607-05H		
15		Return Cover - Side Option AKA, BVA	AS-58607-34H	AS-58607-34H	AS-58607-34H		
16		Top Panel	AS-58607-67H	AS-58607-67H	AS-58607-67H		
17		Grille	95-100906-08	95-100906-08	95-100906-08		
18		Filter Access Panel	AS-58607-08H	AS-58607-49H	AS-58607-49H		
19		Condenser Louver Panel	AS-58607-61H	AS-58607-56H	AS-58607-56H		
20		Center Post	AS-58569-06H	AS-58569-08H	AS-58569-08H		
21		Control Access Panel	AS-58568-02H	AS-58568-04H	AS-58568-04H		
22		Control Box (w/o components)	AE-58597-01	AE-58597-01	AE-58597-01		
23		Control Box Cover	AE-58598-01	AE-58598-01	AE-58598-01		
24		Blank-Off Plate (models without heat only)	AS-58607-17	AS-58607-17	AS-58607-17		
25		Heater Kit				See Accessories	
27		Bulkhead Valve (2)	61-22369-04	61-22369-04	61-22369-04		
28		Bulkhead Valve Locknut (2)	63-22368-01	63-22368-01	63-22368-01		
		Bulkhead Valve Cap (2)	83-100635-01	83-100635-01	83-100635-01		
A		Star Bushing	45-18515-01	45-18515-01	45-18515-01		
B		Nylon Snap Bushing	45-17057-02	45-17057-02	45-17057-02		
C		Strain Relief Bushing	45-17055-11	45-17055-11	45-17055-11		
D		Neoprene Gasket - 1/8 x 1/2	68-22079-04	68-22079-04	68-22079-04		
E		Neoprene Gasket - 1/4 x 1/2	68-22079-06	68-22079-06	68-22079-06		
F		Gasket 3/8 x 3/4	68-20243-02	68-20243-02	68-20243-02		
G		Gasket 1/2 x 3/4	68-20243-01	68-20243-01	N/A		

No.	Notes	MODEL COOLING CAPACITY MAJOR SERIES	RACA14 024 B	RACA14 030 B	RACA14 036 B	RACA14 048 B	RACA14 060 B
<b>SHEET METAL PARTS, MISCELLANEOUS</b>							
1		Front Base Pan	10-58628-07HT	10-58628-07HT	10-58628-07HT	10-58628-07HT	10-58628-07HT
2		Base Rail (2)	AE-58562-03	AE-58562-03	AE-58562-03	AE-58562-03	AE-58562-03
3		Base Rail (2)	AE-58562-04	AE-58562-04	AE-58562-04	AE-58562-04	AE-58562-04
4		Back Base Pan	AS-58607-64	AS-58607-64	AS-58607-64	AS-58607-64	AS-58607-64
5		Blower Shelf	AS-58630-01	AS-58630-01	AS-58630-01	AS-58630-01	AS-58630-01
6		Blower Shelf Transition	AS-58607-19	AS-58607-19	AS-58607-19	AS-58607-19	AS-58607-19
7		Divider Panel	AS-58607-03	AS-58607-03	AS-58607-03	AS-58607-03	AS-58607-03
8		Bulkhead Assembly	AS-58607-68	AS-58607-62	AS-58607-62	AS-58607-57	AS-58607-57
9		Heater Mounting Panel	AS-58607-16	AS-58607-16	AS-58607-16	AS-58607-16	AS-58607-16
10		Extension - Heater Mounting Panel	N/A	N/A	N/A	AS-58607-42	AS-58607-42
11		Corner Post	AS-58607-39H T	AS-58607-39H T	AS-58607-39H T	AS-58607-53H T	AS-58607-53H T
12		Blower Access Panel	AS-58607-09H T	AS-58607-09H T	AS-58607-09H T	AS-58607-47H T	AS-58607-47H T
13		End Panel	AS-58607-04H T	AS-58607-04H T	AS-58607-04H T	AS-58607-48H T	AS-58607-48H T
14		Supply Cover - Downflow/ Side	AS-58607-35H T	AS-58607-35H T	AS-58607-35H T	AS-58607-35H T	AS-58607-35H T
15		Return Cover - Downflow/ Side	AS-58607-34H T	AS-58607-34H T	AS-58607-34H T	AS-58607-34H T	AS-58607-34H T
16		Top Panel	AS-58607-67H T	AS-58607-67H T	AS-58607-67H T	AS-58607-67H T	AS-58607-67H T
17		Grille	95-100906-08	95-100906-08	95-100906-08	95-100906-08	95-100906-08
18		Filter Access Panel	AS-58607-08H T	AS-58607-08H T	AS-58607-08H T	AS-58607-49H T	AS-58607-49H T
19		Condenser Louver Panel	AS-58607-61H T	AS-58607-61H T	AS-58607-61H T	AS-58607-56H T	AS-58607-56H T
20		Center Post	AE-58569-06H T	AE-58569-06H T	AE-58569-06H T	AE-58569-08H T	AE-58569-08H T
21		Control Access Panel	AE-58568-02H T	AE-58568-02H T	AE-58568-02H T	AE-58568-04H T	AE-58568-04H T
22		Control Box (w/o components)	AE-58597-01	AE-58597-01	AE-58597-01	AE-58597-01	AE-58597-01
23		Control Box Cover	AE-58598-01	AE-58598-01	AE-58598-01	AE-58598-01	AE-58598-01
24		Blank-Off Plate (models without heat only)	AS-58607-17	AS-58607-17	AS-58607-17	AS-58607-17	AS-58607-17
25		Heater Kit	See Accessories				
27		Bulkhead Valve (2)	61-22369-04	61-22369-04	61-22369-04	61-22369-04	61-22369-04
28		Bulkhead Valve Locknut (2)	63-22368-01	63-22368-01	63-22368-01	63-22368-01	63-22368-01
		Bulkhead Valve Cap (2)	83-100635-01	83-100635-01	83-100635-01	83-100635-01	83-100635-01
A		Star Bushing	45-18515-01	45-18515-01	45-18515-01	45-18515-01	45-18515-01
B		Nylon Snap Bushing	45-17057-02	45-17057-02	45-17057-02	45-17057-02	45-17057-02
C		Strain Relief Bushing	45-17055-11	45-17055-11	45-17055-11	45-17055-11	45-17055-11
D		Neoprene Gasket - 1/8 x 1/2	68-22079-04	68-22079-04	68-22079-04	68-22079-04	68-22079-04
E		Neoprene Gasket - 1/4 x 1/2	68-22079-06	68-22079-06	68-22079-06	68-22079-06	68-22079-06
F		Gasket 3/8 x 3/4	68-20243-02	68-20243-02	68-20243-02	68-20243-02	68-20243-02
G		Gasket 1/2 x 3/4	68-20243-03	68-20243-03	68-20243-03	68-20243-03	68-20243-03

No.	Notes	MODEL COOLING CAPACITY MAJOR SERIES	RACA14 060 C				
<b>SHEET METAL PARTS, MISCELLANEOUS</b>							
1		Front Base Pan	10-58628-07HT				
2		Base Rail (2)	AE-58562-03				
3		Base Rail (2)	AE-58562-04				
4		Back Base Pan	AS-58607-64				
5		Blower Shelf	AS-58630-01				
6		Blower Shelf Transition	AS-58607-19				
7		Divider Panel	AS-58607-03				
8		Bulkhead Assembly	AS-58607-57				
9		Heater Mounting Panel	AS-58607-16				
10		Extension - Heater Mounting Panel	AS-58607-42				
11		Corner Post	AS-58607-53H T				
12		Blower Access Panel	AS-58607-47H T				
13		End Panel	AS-58607-48H T				
14		Supply Cover - Downflow/ Side	AS-58607-35H T				
15		Return Cover - Downflow/ Side	AS-58607-34H T				
16		Top Panel	AS-58607-67H T				
17		Grille	<a href="#">95-100906-08</a>				
18		Filter Access Panel	AS-58607-49H T				
19		Condenser Louver Panel	AS-58607-56H T				
20		Center Post	AE-58569-08H T				
21		Control Access Panel	AE-58568-04H T				
22		Control Box (w/o components)	AE-58597-01				
23		Control Box Cover	AE-58598-01				
24		Blank-Off Plate (models without heat only)	AS-58607-17				
25		Heater Kit					See Accessories
27		Bulkhead Valve (2)	<a href="#">61-22369-04</a>				
28		Bulkhead Valve Locknut (2)	63-22368-01				
		Bulkhead Valve Cap (2)	83-100635-01				
A		Star Bushing	45-18515-01				
B		Nylon Snap Bushing	45-17057-02				
C		Strain Relief Bushing	45-17055-11				
D		Neoprene Gasket - 1/8 x 1/2	68-22079-04				
E		Neoprene Gasket - 1/4 x 1/2	68-22079-06				
F		Gasket 3/8 x 3/4	68-20243-02				
G		Gasket 1/2 x 3/4	68-20243-03				

No.	Notes	MODEL COOLING CAPACITY MAJOR SERIES ELECTRICAL DESIGNATION	RACA14	RACA14	RACA14	RACA14	RACA14	
			024 A J	030 A J	036 A J	042 A J	048 A J	
<b>ELECTRICAL GROUP</b>								
31		Terminal Strip	45-23591-01	45-23591-01	45-23591-01	45-23591-01	45-23591-01	
33	Stk	Contactora	42-102664-06	42-102664-06	42-102664-06	42-102664-06	42-102664-06	
34	Stk	Sequencing Relay	42-21593-05	42-21593-05	42-21593-05	N/A	N/A	
35	Stk	Transformer (Minor Series A)	46-18788-05	46-18788-05	46-18788-05	46-18788-05	46-18788-05	
35	Stk	Transformer (Minor Series B)	N/A	N/A	N/A	46-18788-13	N/A	
36		Ground Lug	45-19000-01	45-19000-01	45-19000-01	45-19000-01	45-19000-01	
54a		Capacitor - Blower Motor	See Blower Group					
57	Stk	Blower Relay	42-101208-01	42-101208-01	42-101208-01	42-21571-08	42-21571-08	
73		Capacitor - Compressor/Fan	See Compressor Group					
84		Limit Control - Blower Shelf	47-25334-01	47-25334-01	47-25334-01	47-25334-01	47-25334-01	
85		Star Bushing	45-18515-01	45-18515-01	45-18515-01	45-18515-01	45-18515-01	
		Start Relay	See Compressor Group					
		Start Capacitor	See Compressor Group					
		Compressor Wiring Harness (Molded Plug)	See Compressor Group					
88		Wiring Harness - 6 pin to heater kit	45-104222-01	45-104222-01	45-104222-01	45-104222-01	45-104222-01	
		Leadwire - from Flame Sensor to 9 pin Wiring Harness Plug	45-25323-02	45-25323-02	45-25323-02	45-25323-02	45-25323-02	
		Capacitor Adaptor Plate (2 in. round capacitor)	AE-54609-01	AE-54609-01	AE-54609-01	AE-54609-01	AE-54609-01	
		Capacitor Adaptor Plate (2 in. X 1-1/4 in. oval capacitor)	AE-54609-02	AE-54609-02	AE-54609-02	AE-54609-02	AE-54609-02	

No.	Notes	MODEL COOLING CAPACITY MAJOR SERIES ELECTRICAL DESIGNATION	RACA14	RACA14	RACA14	RACA14	RACA14	
			060 A J	036 A C	042 A C	048 A C	060 A C	
<b>ELECTRICAL GROUP</b>								
31		Terminal Strip	45-23591-01	45-23591-01	45-23591-01	45-23591-01	45-23591-01	
33	Stk	Contactora	42-102664-06	42-102664-08	42-102664-08	42-102664-08	42-102664-08	
34	Stk	Sequencing Relay	N/A	42-21593-05	N/A	N/A	N/A	
35	Stk	Transformer (Minor Series A)	46-18788-05	46-18788-05	46-18788-05	46-18788-05	46-18788-05	
35	Stk	Transformer (Minor Series B)	N/A	N/A	46-18788-13	N/A	N/A	
36		Ground Lug	45-19000-01	45-19000-01	45-19000-01	45-19000-01	45-19000-01	
54a		Capacitor - Blower Motor	See Blower Group					
57	Stk	Blower Relay	42-21571-08	42-21571-08	42-21571-08	42-21571-08	42-21571-08	
73		Capacitor - Compressor/Fan	See Compressor Group					
84		Limit Control - Blower Shelf	47-25334-01	47-25334-01	47-25334-01	47-25334-01	47-25334-01	
85		Star Bushing	45-18515-01	45-18515-01	45-18515-01	45-18515-01	45-18515-01	
		Start Relay	See Compressor Group					
		Start Capacitor	See Compressor Group					
		Compressor Wiring Harness (Molded Plug)	See Compressor Group					
88		Wiring Harness - 6 pin to heater kit	45-104222-01	45-104222-01	45-104222-01	45-104222-01	45-104222-01	
		Leadwire - from Flame Sensor to 9 pin Wiring Harness Plug	45-25323-02	45-25323-02	45-25323-02	45-25323-02	45-25323-02	
		Capacitor Adaptor Plate (2 in. round capacitor)	AE-54609-01	AE-54609-01	AE-54609-01	AE-54609-01	AE-54609-01	
		Capacitor Adaptor Plate (2 in. X 1-1/4 in. oval capacitor)	AE-54609-02	AE-54609-02	AE-54609-02	AE-54609-02	AE-54609-02	

No.	Notes	MODEL COOLING CAPACITY MAJOR SERIES ELECTRICAL DESIGNATION	RACA14	RACA14	RACA14	RACA14	RACA14	
			024 B J	030 B J	036 B J	048 B J	060 B J	
<b>ELECTRICAL GROUP</b>								
31		Terminal Strip	45-23591-01	45-23591-01	45-23591-01	45-23591-01	45-23591-01	
33	Stk	Contactora	42-102664-06	42-102664-06	42-102664-06	42-102664-06	42-102664-06	
34	Stk	Sequencing Relay	N/A	N/A	N/A	N/A	42-21571-08	
35	Stk	Transformer (Minor Series A)	46-18788-05	46-18788-05	46-18788-05	46-18788-05	46-18788-05	
35	Stk	Transformer (Minor Series B)	46-18788-13	46-18788-13	46-18788-13	N/A	N/A	
36		Ground Lug	45-19000-01	45-19000-01	45-19000-01	45-19000-01	45-19000-01	
54a		Capacitor - Blower Motor	See Blower Group					
57	Stk	Blower Relay	42-21571-08	42-21571-08	42-21571-08	42-21571-08	42-21571-08	
73		Capacitor - Compressor/Fan	See Compressor Group					
84		Limit Control - Blower Shelf	47-25334-01	47-25334-01	47-25334-01	47-25334-01	47-25334-01	
85		Star Bushing	45-18515-01	45-18515-01	45-18515-01	45-18515-01	45-18515-01	
		Start Relay	See Compressor Group					
		Start Capacitor	See Compressor Group					
		Compressor Wiring Harness (Molded Plug)	See Compressor Group					
88		Wiring Harness - 6 pin to heater kit	45-104222-01	45-104222-01	45-104222-01	45-104222-01	45-104222-01	
		Capacitor Adaptor Plate (2 in. round capacitor)	AE-54609-01	AE-54609-01	AE-54609-01	AE-54609-01	N/A	

No.	Notes	MODEL COOLING CAPACITY MAJOR SERIES ELECTRICAL DESIGNATION	RACA14	RACA14	RACA14			
			036 B C	048 B C	060 B C			
<b>ELECTRICAL GROUP</b>								
31		Terminal Strip	45-23591-01	45-23591-01	45-23591-01			
33	Stk	Contactora	42-102664-08	42-102664-08	42-102664-08			
34	Stk	Sequencing Relay	N/A	N/A	42-21571-08			
35	Stk	Transformer (Minor Series A)	46-18788-05	46-18788-05	46-18788-05			
35	Stk	Transformer (Minor Series B)	46-18788-13	N/A	N/A			
36		Ground Lug	45-19000-01	45-19000-01	45-19000-01			
54a		Capacitor - Blower Motor	See Blower Group					
57	Stk	Blower Relay	42-21571-08	42-21571-08	42-21571-08			
73		Capacitor - Compressor/Fan	See Compressor Group					
84		Limit Control - Blower Shelf	47-25334-01	47-25334-01	47-25334-01			
85		Star Bushing	45-18515-01	45-18515-01	45-18515-01			
		Start Relay	See Compressor Group					
		Start Capacitor	See Compressor Group					
		Compressor Wiring Harness (Molded Plug)	See Compressor Group					
88		Wiring Harness - 6 pin to heater kit	45-104222-01	45-104222-01	45-104222-01			
		Capacitor Adaptor Plate (2 in. round capacitor)	AE-54609-01	AE-54609-01	N/A			

No.	Notes	MODEL	RACA14		RACA14		
		COOLING CAPACITY	060		060		
		MAJOR SERIES	C		C		
		ELECTRICAL DESIGNATION	C		J		
<b>ELECTRICAL GROUP</b>							
31		Terminal Strip	45-23591-01		45-23591-01		
33	Stk	Contactora	42-102664-08		42-102664-06		
34	Stk	Sequencing Relay	<a href="#">42-21571-08</a>		<a href="#">42-21571-08</a>		
35	Stk	Transformer	46-18788-05		46-18788-05		
36		Ground Lug	45-19000-01		45-19000-01		
54a		Capacitor - Blower Motor			See Bower Group		
57	Stk	Blower Relay	<a href="#">42-21571-08</a>		<a href="#">42-21571-08</a>		
73		Capacitor - Compressor/Fan			See Compressor Group		
84		Limit Control - Blower Shelf	<a href="#">47-25334-01</a>		<a href="#">47-25334-01</a>		
85		Star Bushing	45-18515-01		45-18515-01		
		Comfort Alert	42-101504-03		42-101504-05		
		Start Relay			See Compressor Group		
		Start Capacitor			See Compressor Group		
		Compressor Wiring Harness (Molded Plug)			See Compressor Group		
88		Wiring Harness - 6 pin to heater kit	45-104222-01		45-104222-01		
		Capacitor Adaptor Plate (2 in. round capacitor)	N/A		N/A		

No.	Notes	MODEL COOLING CAPACITY MAJOR SERIES ELECTRICAL DESIGNATION	RACA14 024 A J	RACA14 030 A J	RACA14 036 A J	RACA14 042 A J	RACA14 048 A J	
<b>FAN GROUP</b>								
37	Stk	Fan Motor	51-100999-24	51-100999-24	51-100999-24	51-100998-24	51-100998-29	
38	Stk	Fan Blade	70-101323-19	70-101323-19	70-101323-19	70-101323-19	70-23594-02	
73		Capacitor - Compressor/Fan Motor	See Compressor Group					

No.	Notes	MODEL COOLING CAPACITY MAJOR SERIES ELECTRICAL DESIGNATION	RACA14 060 A J	RACA14 036 A C	RACA14 042 A C	RACA14 048 A C	RACA14 060 A C	
<b>FAN GROUP</b>								
37	Stk	Fan Motor	51-100998-29	51-100999-24	51-100998-24	51-100998-29	51-100998-29	
38	Stk	Fan Blade	70-23594-03	70-101323-19	70-101323-19	70-23594-02	70-23594-03	
73	Stk	Capacitor - Fan Motor	See Compressor Group					

No.	Notes	MODEL COOLING CAPACITY MAJOR SERIES ELECTRICAL DESIGNATION	RACA14 024 B J	RACA14 030 B J	RACA14 036 B J	RACA14 048 B J	RACA14 060 B J	
<b>FAN GROUP</b>								
37	Stk	Fan Motor	51-100998-24	51-100998-24	51-100998-24	51-100998-29	51-100998-29	
38	Stk	Fan Blade	70-101323-19	70-101323-19	70-101323-19	70-23594-02	70-23594-03	
73		Capacitor - Compressor/Fan Motor	See Compressor Group					

No.	Notes	MODEL COOLING CAPACITY MAJOR SERIES ELECTRICAL DESIGNATION	RACA14 036 B C	RACA14 048 B C	RACA14 060 B C			
<b>FAN GROUP</b>								
37	Stk	Fan Motor	51-100998-24	51-100998-29	51-100998-29			
38	Stk	Fan Blade	70-101323-19	70-23594-02	70-23594-03			
73	Stk	Capacitor - Fan Motor	See Compressor Group					

No.	Notes	MODEL COOLING CAPACITY MAJOR SERIES ELECTRICAL DESIGNATION	RACA14 060 C C		RACA14 060 C J			
<b>FAN GROUP</b>								
37	Stk	Fan Motor	51-100998-29		51-100998-29			
38	Stk	Fan Blade	70-23594-03		70-23594-03			
73	Stk	Capacitor - Fan Motor	See Compressor Group					

No.	Notes	MODEL COOLING CAPACITY MAJOR SERIES ELECTRICAL DESIGNATION DRIVE PACKAGE	RACA14	RACA14	RACA14		RACA14	
			042 A C T	048 A C T	060 A C T		036 A C D	
<b>BLOWER GROUP</b>								
	Stk	Blower Assembly (Includes items 51-56)	AS-58662-70	AS-58662-71	AS-58662-77		AS-58662-55	
51		Housing w/Wheel	<a href="#">70-100840-02</a>	<a href="#">70-100840-02</a>	70-100840-03		<a href="#">70-100840-02</a>	
51a		Transition	AE-102207-05	AE-102207-05	AE-102207-13		AE-102207-05	
51b		Transition - Back	AE-102207-06	AE-102207-06	AE-102207-14		AE-102207-06	
52	Stk	Blower Wheel	<a href="#">703016</a>	<a href="#">703016</a>	PD706266		<a href="#">703016</a>	
53		Cut-Off	N/A	N/A	N/A		N/A	
54	Stk	Blower Motor	51-101920-28	51-101920-29	51-101984-16		<a href="#">51-100837-04</a>	
54a		Capacitor - Blower Motor	N/A	N/A	N/A		43-100496-42	
55		Motor Band	70-19927-03	70-19927-03	70-19927-03		70-19927-03	
56		Motor Arm Assembly	70-19929-09	70-19929-09	70-19929-09		70-19929-09	
56a		Hex Washer Screw (3)	63-20072-05	63-20072-05	63-20072-05		63-20072-05	
57		Blower Relay	See Electrical Group					

No.	Notes	MODEL COOLING CAPACITY MAJOR SERIES ELECTRICAL DESIGNATION DRIVE PACKAGE	RACA14	RACA14	RACA14			
			024 A J D	030 A J D	036 A J D			
<b>BLOWER GROUP</b>								
	Stk	Blower Assembly (Includes items 51-56)	AS-58662-01	AS-58662-05	AS-58662-55			
51		Housing	AS-58619-01	<a href="#">AS-58619-02</a>	N/A			
51		Housing w/Wheel	N/A	N/A	<a href="#">70-100840-02</a>			
51a		Transition	N/A	N/A	AE-102207-05			
51b		Transition - Back	N/A	N/A	AE-102207-06			
52	Stk	Blower Wheel	70-20218-01	70-18625-03	<a href="#">703016</a>			
53		Cut-Off	AE-64401-10	<a href="#">AE-64401-06</a>	N/A			
54	Stk	Blower Motor	51-23608-02	<a href="#">51-23609-04</a>	<a href="#">51-100837-04</a>			
54a		Capacitor - Blower Motor	43-100496-04	43-100496-12	43-100496-42			
		Motor Mounting Bracket Assembly (includes 55, 56)	AS-53148-03	AS-53148-03	N/A			
55		Motor Band	<a href="#">70-19927-01</a>	<a href="#">70-19927-01</a>	70-19927-03			
56		Motor Arm Assembly (3)	<a href="#">70-19929-02</a>	<a href="#">70-19929-02</a>	70-19929-09			
56a		Hex Washer Screw (3)	63-20072-05	63-20072-05	63-20072-05			
57		Blower Relay	See Electrical Group					

No.	Notes	MODEL COOLING CAPACITY MAJOR SERIES ELECTRICAL DESIGNATION DRIVE PACKAGE	RACA14	RACA14	RACA14	RACA14		
			024 A J T	042 A J T	048 A J T	060 A J T		
<b>BLOWER GROUP</b>								
	Stk	Blower Assembly (Includes items 51-56)	AS-58662-73	AS-58662-70	AS-58662-71	AS-58662-77		
51		Housing	<a href="#">AS-58619-02</a>	N/A	N/A	N/A		
51		Housing w/Wheel	N/A	<a href="#">70-100840-02</a>	<a href="#">70-100840-02</a>	70-100840-03		
51a		Transition	N/A	AE-102207-05	AE-102207-05	AE-102207-13		
51b		Transition - Back	N/A	AE-102207-06	AE-102207-06	AE-102207-14		
52	Stk	Blower Wheel	70-18625-03	<a href="#">703016</a>	<a href="#">703016</a>	PD706266		
53		Cut-Off	<a href="#">AE-64401-06</a>	N/A	N/A	N/A		
54	Stk	Blower Motor	51-101879-12	51-101920-28	51-101920-29	51-101984-16		
54a		Capacitor - Blower Motor	N/A	N/A	N/A	N/A		
		Motor Mounting Bracket Assembly (includes 55, 56)	AS-53148-13	N/A	N/A	N/A		
55		Motor Band	<a href="#">70-19927-01</a>	70-19927-03	70-19927-03	70-19927-03		
56		Motor Arm Assembly (3)	<a href="#">70-19929-02</a>	70-19929-09	70-19929-09	70-19929-09		
56a		Hex Washer Screw (3)	63-20072-05	63-20072-05	63-20072-05	63-20072-05		
57		Blower Relay	See Electrical Group					

No.	Notes	MODEL COOLING CAPACITY MAJOR SERIES ELECTRICAL DESIGNATION DRIVE PACKAGE	RACA14	RACA14	RACA14	RACA14	RACA14	
			024 B J T	030 B J T	036 B J T	048 B J T	060 B J T	
<b>BLOWER GROUP</b>								
	Stk	Blower Assembly (Includes items 51-56)	AS-58662-73	AS-58662-74	AS-58662-75	AS-58662-71	AS-58662-72	
51		Housing	AS-58619-02	AS-58619-02	N/A	N/A	N/A	
51		Housing w/Wheel	N/A	N/A	70-100840-02	70-100840-02	70-100840-03	
51a		Transition	N/A	N/A	AE-102207-05	AE-102207-05	AE-102207-13	
51b		Transition - Back	N/A	N/A	AE-102207-06	AE-102207-06	AE-102207-14	
52	Stk	Blower Wheel	70-18625-03	70-18625-03	703016	703016	PD706266	
53		Cut-Off	AE-64401-06	AE-64401-06	N/A	N/A	N/A	
54	Stk	Blower Motor	51-101879-12	51-101879-13	51-101880-21	51-101920-29	51-104361-18	
54a		Capacitor - Blower Motor	N/A	N/A	N/A	N/A	N/A	
		Motor Mounting Bracket Assembly (includes 55, 56)	AS-53148-13	AS-53148-13	N/A	N/A	N/A	
55		Motor Band	70-19927-01	70-19927-01	70-19927-03	70-19927-03	70-19927-03	
56		Motor Arm Assembly (3)	70-19929-02	70-19929-02	70-19929-09	70-19929-09	70-19929-09	
56a		Hex Washer Screw (3)	63-20072-05	63-20072-05	63-20072-05	63-20072-05	63-20072-05	
57		Blower Relay	See Electrical Group					

No.	Notes	MODEL COOLING CAPACITY MAJOR SERIES ELECTRICAL DESIGNATION DRIVE PACKAGE	RACA14	RACA14	RACA14			
			036 B C T	048 B C T	060 B C T			
<b>BLOWER GROUP</b>								
	Stk	Blower Assembly (Includes items 51-56)	AS-58662-75	AS-58662-71	AS-58662-72			
51		Housing w/Wheel	70-100840-02	70-100840-02	70-100840-03			
51a		Transition	AE-102207-05	AE-102207-05	AE-102207-13			
51b		Transition - Back	AE-102207-06	AE-102207-06	AE-102207-14			
52	Stk	Blower Wheel	703016	703016	PD706266			
53		Cut-Off	N/A	N/A	N/A			
54	Stk	Blower Motor	51-101880-21	51-101920-29	51-104361-18			
54a		Capacitor - Blower Motor	N/A	N/A	N/A			
55		Motor Band	70-19927-03	70-19927-03	70-19927-03			
56		Motor Arm Assembly	70-19929-09	70-19929-09	70-19929-09			
56a		Hex Washer Screw (3)	63-20072-05	63-20072-05	63-20072-05			
57		Blower Relay	See Electrical Group					

No.	Notes	MODEL COOLING CAPACITY MAJOR SERIES ELECTRICAL DESIGNATION DRIVE PACKAGE	RACA14		RACA14			
			060 C C T		060 C J T			
<b>BLOWER GROUP</b>								
	Stk	Blower Assembly (Includes items 51-56)	AS-58662-96		AS-58662-96			
51		Housing w/Wheel	70-100840-03		70-100840-03			
51a		Transition	AE-102207-13		AE-102207-13			
51b		Transition - Back	AE-102207-14		AE-102207-14			
52	Stk	Blower Wheel	PD706266		PD706266			
53		Cut-Off	N/A		N/A			
54	Stk	Blower Motor	51-101984-17		51-101984-17			
54a		Capacitor - Blower Motor	N/A		N/A			
55		Motor Band	70-19927-03		70-19927-03			
56		Motor Arm Assembly	70-19929-09		70-19929-09			
56a		Hex Washer Screw (3)	63-20072-05		63-20072-05			
57		Blower Relay	See Electrical Group					

No.	Notes	MODEL COOLING CAPACITY MAJOR SERIES ELECTRICAL DESIGNATION MINOR SERIES	RACA14	RACA14	RACA14	RACA14	RACA14
			024 A J A	030 A J A	036 A J A	042 A J A	048 A J A
<b>COIL GROUP</b>							
<b>CONDENSER COIL:</b>							
61	Stk	Condenser Coil (Coil Only)	AS-104395-01	AS-104395-02	AS-104395-05	AS-104395-06	AS-104395-07
61b		Pad - Bottom Coil	68-104248-03 (4)	68-104248-03 (4)	68-104248-03 (4)	68-104248-03 (5)	68-104248-03 (5)
61c		Coil Filler Plate (2)	AS-104545-01H	AS-104545-01H	AS-104545-01H	AS-104545-01H	AS-104545-02H
61d		Coil Mount	AE-101781-03	AE-101781-01	AE-101781-01	N/A	N/A
		Access Valve Body (2)	61-18542-01	61-18542-01	61-18542-01	61-18542-01	61-18542-01
		Access Valve Core (4)	61-18551-01	61-18551-01	61-18551-01	61-18551-01	61-18551-01
		Bulkhead Valve (2)	61-22369-04	61-22369-04	61-22369-04	61-22369-04	61-22369-04
78	Stk	Filter Drier - Liquid Line	83-22755-05	83-22755-05	83-22755-05	83-22755-05	83-22755-05
<b>EVAPORATOR COIL:</b>							
62	Stk	Evaporator Coil (Coil Only)	65-104387-01	65-104387-01	65-104387-01	65-104387-01	65-104387-02
63		Drain Pan Grommet	56-23601-01	56-23601-01	56-23601-01	56-23601-01	56-23601-01
64	Stk	Drain Pan (Before date code F2521)	68-23602-03	68-23602-03	68-23602-03	68-23602-03	68-23602-03
		Drain Pan (On or After date code F2521)	68-108460-01	68-108460-01	68-108460-01	68-108460-01	68-108460-01
64a		Water Block-Off (Before date code F2521)	68-104901-01	68-104901-01	68-104901-01	68-104901-01	68-104901-01
		Water Block-Off (On or After date code F2521)	68-108461-01	68-108461-01	68-108461-01	68-108461-01	68-108461-01
64b		Drain Trap (Attached to Drain Pan)	68-23603-01	68-23603-01	68-23603-01	68-23603-01	68-23603-01
		Auxiliary Drain Pipe	82-58611-02	82-58611-02	82-58611-02	82-58611-02	82-58611-02
	Stk	TXV	61-102211-35	61-102211-36	61-102211-37	61-102211-37	61-102211-41
67a		Frame - Coil Back Air Stop	AE-104569-01	AE-104569-01	AE-104569-01	AE-104569-01	AE-104569-02
67b		Frame - Coil Top Air Stop	AE-104571-01	AE-104571-01	AE-104571-01	AE-104571-01	AE-104571-02
68a		Frame - Coil Front Air Stop	AS-104570-01H	AS-104570-01H	AS-104570-01H	AS-104570-01H	AS-104570-02H
68b		Frame - Coil Front Support	AE-104572-01	AE-104572-01	AE-104572-01	AE-104572-01	AE-104572-02

No.	Notes	MODEL COOLING CAPACITY MAJOR SERIES ELECTRICAL DESIGNATION MINOR SERIES	RACA14		RACA14		
			060 A J A		042 A J B		
<b>COIL GROUP</b>							
<b>CONDENSER COIL:</b>							
61	Stk	Condenser Coil (Coil Only)	AS-104395-03		AS-104395-13		
61b		Pad - Bottom Coil	68-104248-03 (5)		68-104248-03 (5)		
61c		Coil Filler Plate (2)	AS-104545-02H		AE-104545-01H T		
61d		Coil Mount	N/A		N/A		
		Access Valve Body (2)	61-18542-01		61-18542-01		
		Access Valve Core (4)	61-18551-01		61-18551-01		
		Bulkhead Valve (2)	61-22369-04		61-22369-04		
78	Stk	Filter Drier - Liquid Line	83-22755-05		83-104826-03		
<b>EVAPORATOR COIL:</b>							
62	Stk	Evaporator Coil (Coil Only)	65-104387-03		65-104387-04		
63		Drain Pan Grommet	56-23601-01		56-23601-01		
64	Stk	Drain Pan (Before date code F2521)	68-23602-03		68-23602-03		
		Drain Pan (On or After date code F2521)	68-108460-01		68-108460-01		
64a		Water Block-Off (Before date code F2521)	68-104901-01		68-104901-01		
		Water Block-Off (On or After date code F2521)	68-108461-01		68-108461-01		
64b		Drain Trap (Attached to Drain Pan)	68-23603-01		68-23603-01		
		Auxiliary Drain Pipe	82-58611-02		82-58611-02		
	Stk	TXV	61-102211-39		61-102211-58		
67a		Frame - Coil Back Air Stop	AE-104569-02		AE-104569-01		
67b		Frame - Coil Top Air Stop	AE-104571-02		AE-104571-01		
68a		Frame - Coil Front Air Stop	AS-104570-02H		AE-104570-01H T		
68b		Frame - Coil Front Support	AE-104572-02		AE-104572-01		

No.	Notes	MODEL COOLING CAPACITY MAJOR SERIES ELECTRICAL DESIGNATION MINOR SERIES	RACA14	RACA14	RACA14	RACA14	RACA14
			036 A C A	042 A C A	048 A C A	060 A C A	042 A C B
<b>COIL GROUP</b>							
<b>CONDENSER COIL:</b>							
61	Stk	Condenser Coil (Coil Only)	AS-104395-05	AS-104395-06	AS-104395-07	AS-104395-03	AS-104395-13
61b		Pad - Bottom Coil	68-104248-03 (4)	68-104248-03 (5)	68-104248-03 (5)	68-104248-03 (5)	68-104248-03 (5)
61c		Coil Filler Plate (2)	AS-104545-01H	AS-104545-01H	AS-104545-02H	AS-104545-02H	AE-104545-01H T
61d		Coil Mount	AE-101781-01	N/A	N/A	N/A	N/A
		Access Valve Body (2)	61-18542-01	61-18542-01	61-18542-01	61-18542-01	61-18542-01
		Access Valve Core (4)	61-18551-01	61-18551-01	61-18551-01	61-18551-01	61-18551-01
		Bulkhead Valve (2)	61-22369-04	61-22369-04	61-22369-04	61-22369-04	61-22369-04
78	Stk	Filter Drier - Liquid Line	83-22755-05	83-22755-05	83-22755-05	83-22755-05	83-104826-03
<b>EVAPORATOR COIL:</b>							
62	Stk	Evaporator Coil (Coil Only)	65-104387-01	65-104387-01	65-104387-02	65-104387-03	65-104387-04
63		Drain Pan Grommet	56-23601-01	56-23601-01	56-23601-01	56-23601-01	56-23601-01
64	Stk	Drain Pan (Before date code F2521)	68-23602-03	68-23602-03	68-23602-03	68-23602-03	68-23602-03
		Drain Pan (On or After date code F2521)	68-108460-01	68-108460-01	68-108460-01	68-108460-01	68-108460-01
64a		Water Block-Off (Before date code F2521)	68-104901-01	68-104901-01	68-104901-01	68-104901-01	68-104901-01
		Water Block-Off (On or After date code F2521)	68-108461-01	68-108461-01	68-108461-01	68-108461-01	68-108461-01
64b		Drain Trap (Attached to Drain Pan)	68-23603-01	68-23603-01	68-23603-01	68-23603-01	68-23603-01
		Auxiliary Drain Pipe	82-58611-02	82-58611-02	82-58611-02	82-58611-02	82-58611-02
	Stk	TXV	61-102211-37	61-102211-37	61-102211-41	61-102211-39	61-102211-58
67a		Frame - Coil Back Air Stop	AE-104569-01	AE-104569-01	AE-104569-02	AE-104569-02	AE-104569-01
67b		Frame - Coil Top Air Stop	AE-104571-01	AE-104571-01	AE-104571-02	AE-104571-02	AE-104571-01
68a		Frame - Coil Front Air Stop	AS-104570-01H	AS-104570-01H	AS-104570-02H	AS-104570-02H	AE-104570-01H T
68b		Frame - Coil Front Support	AE-104572-01	AE-104572-01	AE-104572-02	AE-104572-02	AE-104572-01

No.	Notes	MODEL COOLING CAPACITY MAJOR SERIES ELECTRICAL DESIGNATION MINOR SERIES	RACA14	RACA14	RACA14	RACA14	RACA14
			024 B J A	030 B J A	036 B J A	048 B J A	060 B J A
<b>COIL GROUP</b>							
<b>CONDENSER COIL:</b>							
61	Stk	Condenser Coil (Coil Only)	AS-104395-01	AS-104395-02	AS-104395-05	AS-104395-03	AS-104395-03
61b		Pad - Bottom Coil	68-104248-03 (4)	68-104248-03 (4)	68-104248-03 (4)	68-104248-03 (5)	68-104248-03 (5)
61c		Coil Filler Plate (2)	AE-104545-01H T	AE-104545-01H T	AE-104545-01H T	AE-104545-02H T	AE-104545-02H T
61d		Coil Mount	AE-101781-03	AE-101781-01	AE-101781-01	AE-104544-02H T	AE-104544-02H T
		Access Valve Body (2)	61-18542-01	61-18542-01	61-18542-01	61-18542-01	61-18542-01
		Access Valve Core (4)	61-18551-01	61-18551-01	61-18551-01	61-18551-01	61-18551-01
		Bulkhead Valve (2)	61-22369-04	61-22369-04	61-22369-04	61-22369-04	61-22369-04
78	Stk	Filter Drier - Liquid Line	83-22755-06	83-22755-06	83-22755-06	83-22755-06	83-22755-06
<b>EVAPORATOR COIL:</b>							
62	Stk	Evaporator Coil (Coil Only)	65-104387-01	65-104387-01	65-104387-01	65-104387-03	65-104387-03
63		Drain Pan Grommet	56-23601-01	56-23601-01	56-23601-01	56-23601-01	56-23601-01
64	Stk	Drain Pan (Before date code F2521)	68-23602-03	68-23602-03	68-23602-03	68-23602-03	68-23602-03
		Drain Pan (On or After date code F2521)	68-108460-01	68-108460-01	68-108460-01	68-108460-01	68-108460-01
64a		Water Block-Off (Before date code F2521)	68-104901-01	68-104901-01	68-104901-01	68-104901-01	68-104901-01
		Water Block-Off (On or After date code F2521)	68-108461-01	68-108461-01	68-108461-01	68-108461-01	68-108461-01
64b		Drain Trap (Attached to Drain Pan)	68-23603-01	68-23603-01	68-23603-01	68-23603-01	68-23603-01
		Auxiliary Drain Pipe	82-58611-02	82-58611-02	82-58611-02	82-58611-02	82-58611-02
	Stk	TXV	61-102211-35	61-102211-36	61-102211-37	61-102211-38	61-102211-39
67a		Frame - Coil Back Air Stop	AE-104569-01	AE-104569-01	AE-104569-01	AE-104569-02	AE-104569-02
67b		Frame - Coil Top Air Stop	AE-104571-01	AE-104571-01	AE-104571-01	AE-104571-02	AE-104571-02
68a		Frame - Coil Front Air Stop	AE-104570-01H T	AE-104570-01H T	AE-104570-01H T	AE-104570-02H T	AE-104570-02H T
68b		Frame - Coil Front Support	AE-104572-01	AE-104572-01	AE-104572-01	AE-104572-02	AE-104572-02

No.	Notes	MODEL COOLING CAPACITY MAJOR SERIES ELECTRICAL DESIGNATION MINOR SERIES	RACA14	RACA14	RACA14		
			024 B J B	030 B J B	036 B J B		
<b>COIL GROUP</b>							
<b>CONDENSER COIL:</b>							
61	Stk	Condenser Coil (Coil Only)	AS-104395-08	AS-104395-09	AS-104395-10		
61b		Pad - Bottom Coil	68-104248-03 (4)	68-104248-03 (4)	68-104248-03 (4)		
61c		Coil Filler Plate (2)	AE-104545-01H T	AE-104545-01H T	AE-104545-01H T		
61d		Coil Mount	AE-101781-03	AE-101781-01	AE-101781-01		
		Access Valve Body (2)	61-18542-01	61-18542-01	61-18542-01		
		Access Valve Core (4)	61-18551-01	61-18551-01	61-18551-01		
		Bulkhead Valve (2)	61-22369-04	61-22369-04	61-22369-04		
78	Stk	Filter Drier - Liquid Line	83-104826-03	83-104826-03	83-104826-03		
<b>EVAPORATOR COIL:</b>							
62	Stk	Evaporator Coil (Coil Only)	65-104387-04	65-104387-04	65-104387-04		
63		Drain Pan Grommet	56-23601-01	56-23601-01	56-23601-01		
64	Stk	Drain Pan (Before date code F2521)	68-23602-03	68-23602-03	68-23602-03		
		Drain Pan (On or After date code F2521)	68-108460-01	68-108460-01	68-108460-01		
64a		Water Block-Off (Before date code F2521)	68-104901-01	68-104901-01	68-104901-01		
		Water Block-Off (On or After date code F2521)	68-108461-01	68-108461-01	68-108461-01		
64b		Drain Trap (Attached to Drain Pan)	68-23603-01	68-23603-01	68-23603-01		
		Auxiliary Drain Pipe	82-58611-02	82-58611-02	82-58611-02		
	Stk	TXV	61-102211-55	61-102211-56	61-102211-57		
67a		Frame - Coil Back Air Stop	AE-104569-01	AE-104569-01	AE-104569-01		
67b		Frame - Coil Top Air Stop	AE-104571-01	AE-104571-01	AE-104571-01		
68a		Frame - Coil Front Air Stop	AE-104570-01H T	AE-104570-01H T	AE-104570-01H T		
68b		Frame - Coil Front Support	AE-104572-01	AE-104572-01	AE-104572-01		

No.	Notes	MODEL COOLING CAPACITY MAJOR SERIES ELECTRICAL DESIGNATION MINOR SERIES	RACA14	RACA14	RACA14		RACA14
			036 B C A	048 B C A	060 B C A		036 B C B
<b>COIL GROUP</b>							
<b>CONDENSER COIL:</b>							
61	Stk	Condenser Coil (Coil Only)	AS-104395-05	AS-104395-03	AS-104395-03		AS-104395-10
61b		Pad - Bottom Coil	68-104248-03 (4)	68-104248-03 (5)	68-104248-03 (5)		68-104248-03 (4)
61c		Coil Filler Plate (2)	AE-104545-01H T	AE-104545-02H T	AE-104545-02H T		AE-104545-01H T
61d		Coil Mount	AE-101781-01	AE-104544-02H T	AE-104544-02H T		AE-101781-01
		Access Valve Body (2)	61-18542-01	61-18542-01	61-18542-01		61-18542-01
		Access Valve Core (4)	61-18551-01	61-18551-01	61-18551-01		61-18551-01
		Bulkhead Valve (2)	61-22369-04	61-22369-04	61-22369-04		61-22369-04
78	Stk	Filter Drier - Liquid Line	83-22755-06	83-22755-06	83-22755-06		83-104826-03
<b>EVAPORATOR COIL:</b>							
62	Stk	Evaporator Coil (Coil Only)	65-104387-01	65-104387-03	65-104387-03		65-104387-04
63		Drain Pan Grommet	56-23601-01	56-23601-01	56-23601-01		56-23601-01
64	Stk	Drain Pan (Before date code F2521)	68-23602-03	68-23602-03	68-23602-03		68-23602-03
		Drain Pan (On or After date code F2521)	68-108460-01	68-108460-01	68-108460-01		68-108460-01
64a		Water Block-Off (Before date code F2521)	68-104901-01	68-104901-01	68-104901-01		68-104901-01
		Water Block-Off (On or After date code F2521)	68-108461-01	68-108461-01	68-108461-01		68-108461-01
64b		Drain Trap (Attached to Drain Pan)	68-23603-01	68-23603-01	68-23603-01		68-23603-01
		Auxiliary Drain Pipe	82-58611-02	82-58611-02	82-58611-02		82-58611-02
	Stk	TXV	61-102211-37	61-102211-38	61-102211-39		61-102211-57
67a		Frame - Coil Back Air Stop	AE-104569-01	AE-104569-02	AE-104569-02		AE-104569-01
67b		Frame - Coil Top Air Stop	AE-104571-01	AE-104571-02	AE-104571-02		AE-104571-01
68a		Frame - Coil Front Air Stop	AE-104570-01H T	AE-104570-02H T	AE-104570-02H T		AE-104570-01H T
68b		Frame - Coil Front Support	AE-104572-01	AE-104572-02	AE-104572-02		AE-104572-01

No.	Notes	MODEL	RACA14	RACA14
		COOLING CAPACITY	060	060
		MAJOR SERIES	C	C
		ELECTRICAL DESIGNATION	C	J
		MINOR SERIES	A	A
<b>COIL GROUP</b>				
<b>CONDENSER COIL:</b>				
61	Stk	Condenser Coil (Coil Only)	AS-104395-03	AS-104395-03
61b		Pad - Bottom Coil	68-104248-03 (5)	68-104248-03 (5)
61c		Coil Filler Plate (2)	AE-104545-02H T	AE-104545-02H T
61d		Coil Mount	AE-104544-02H T	AE-104544-02H T
		Access Valve Body (2)	61-18542-01	61-18542-01
		Access Valve Core (4)	61-18551-01	61-18551-01
		Bulkhead Valve (2)	61-22369-04	61-22369-04
78	Stk	Filter Drier - Liquid Line	83-22755-06	83-22755-06
<b>EVAPORATOR COIL:</b>				
62	Stk	Evaporator Coil (Coil Only)	65-104387-03	65-104387-03
63		Drain Pan Grommet	56-23601-01	56-23601-01
64	Stk	Drain Pan (Before date code F2521)	68-23602-03	68-23602-03
		Drain Pan (On or After date code F2521)	68-108460-01	68-108460-01
64a		Water Block-Off (Before date code F2521)	68-104901-01	68-104901-01
		Water Block-Off (On or After date code F2521)	68-108461-01	68-108461-01
64b		Drain Trap (Attached to Drain Pan)	68-23603-01	68-23603-01
		Auxiliary Drain Pipe	82-58611-02	82-58611-02
	Stk	TXV	61-102211-51	61-102211-51
67a		Frame - Coil Back Air Stop	AE-104569-02	AE-104569-02
67b		Frame - Coil Top Air Stop	AE-104571-02	AE-104571-02
68a		Frame - Coil Front Air Stop	AE-104570-02H T	AE-104570-02H T
68b		Frame - Coil Front Support	AE-104572-02	AE-104572-02

No.	Notes	MODEL COOLING CAPACITY MAJOR SERIES ELECTRICAL DESIGNATION MINOR SERIES	RACA14	RACA14	RACA14	RACA14	RACA14	
			024 A J A	030 A J A	036 A J A	042 A J A	048 A J A	
<b>COMPRESSOR GROUP</b>								
		<b>Compressor ID:</b>	<b>8846</b>	<b>8847</b>	<b>8848</b>	<b>8850</b>	<b>8852</b>	
71	Stk	Compressor	55-102045-97S	55-102045-31S	55-102045-66S	55-102045-15S	55-102045-06S	
72		Grommet (4)	56-18518-16	56-18518-16	56-18518-16	56-18518-16	56-18518-06	
73	Stk	Capacitor - Compressor/Fan	43-101665-44	43-101665-26	43-101665-41	43-101665-41	43-101665-48	
76		High Pressure Control	47-102290-01	47-102290-01	47-102290-01	47-102290-01	47-102290-01	
77		Low Pressure Control	See Accessories Group					
	Stk	Compressor Wiring Harness (Molded Plug)	45-100834-80	45-100834-80	45-100834-80	45-100834-80	45-100834-80	

No.	Notes	MODEL COOLING CAPACITY MAJOR SERIES ELECTRICAL DESIGNATION MINOR SERIES	RACA14		RACA14		RACA14	
			060 A J A		042 A J B		036 A C A	
<b>COMPRESSOR GROUP</b>								
		<b>Compressor ID:</b>	<b>8854</b>		<b>9677</b>		<b>8849</b>	
71	Stk	Compressor	55-102045-102S		55-102045-15S		55-102045-90S	
72		Grommet (4)	56-18518-06		56-18518-06		56-18518-16	
73	Stk	Capacitor - Compressor/Fan	43-101665-47		43-101665-41		43-100496-04	
76		High Pressure Control	47-102290-01		47-102290-04		47-102290-01	
77		Low Pressure Control	See Accessories Group					
	Stk	Compressor Wiring Harness (Molded Plug)	45-100834-80		45-100834-80		45-100834-80	

No.	Notes	MODEL COOLING CAPACITY MAJOR SERIES ELECTRICAL DESIGNATION MINOR SERIES	RACA14	RACA14	RACA14		RACA14	
			042 A C A	048 A C A	060 A C A		042 A C B	
<b>COMPRESSOR GROUP</b>								
		<b>Compressor ID:</b>	<b>8851</b>	<b>8853</b>	<b>8855</b>		<b>9678</b>	
71	Stk	Compressor	55-102045-19S	55-102045-08S	55-102045-117S		55-102045-19S	
72		Grommet (4)	56-18518-16	56-18518-06	56-18518-06		56-18518-06	
73	Stk	Capacitor - Compressor/Fan	43-100496-04	43-100496-12	43-100496-12		43-100496-04	
76		High Pressure Control	47-102290-01	47-102290-01	47-102290-01		47-102290-04	
77		Low Pressure Control	See Accessories Group					
	Stk	Compressor Wiring Harness (Molded Plug)	45-100834-80	45-100834-80	45-100834-80		45-100834-80	

No.	Notes	MODEL COOLING CAPACITY MAJOR SERIES ELECTRICAL DESIGNATION MINOR SERIES	RACA14	RACA14	RACA14	RACA14	RACA14	
			024 B J A	030 B J A	036 B J A	048 B J A	060 B J A	
<b>COMPRESSOR GROUP</b>								
		<b>Compressor ID:</b>	<b>8856</b>	<b>8857</b>	<b>8858</b>	<b>8862</b>	<b>8864</b>	
71	Stk	Compressor	55-102045-97S	55-102045-31S	55-102045-66S	55-102045-06S	55-23156-34	
72		Grommet (4)	56-18518-16	56-18518-16	56-18518-16	56-18518-06	56-18518-06	
73	Stk	Capacitor - Compressor/Fan	43-101665-44	43-101665-26	43-101665-41	43-101665-48	43-101665-36	
	Stk	Start Capacitor	N/A	N/A	N/A	N/A	43-17075-04	
76		High Pressure Control	47-102290-01	47-102290-01	47-102290-01	47-102290-01	47-102290-01	
77		Low Pressure Control	See Accessories Group					47-101529-09
	Stk	Compressor Wiring Harness (Molded Plug)	45-100834-03	45-100834-03	45-100834-03	45-100834-03	45-100834-03	

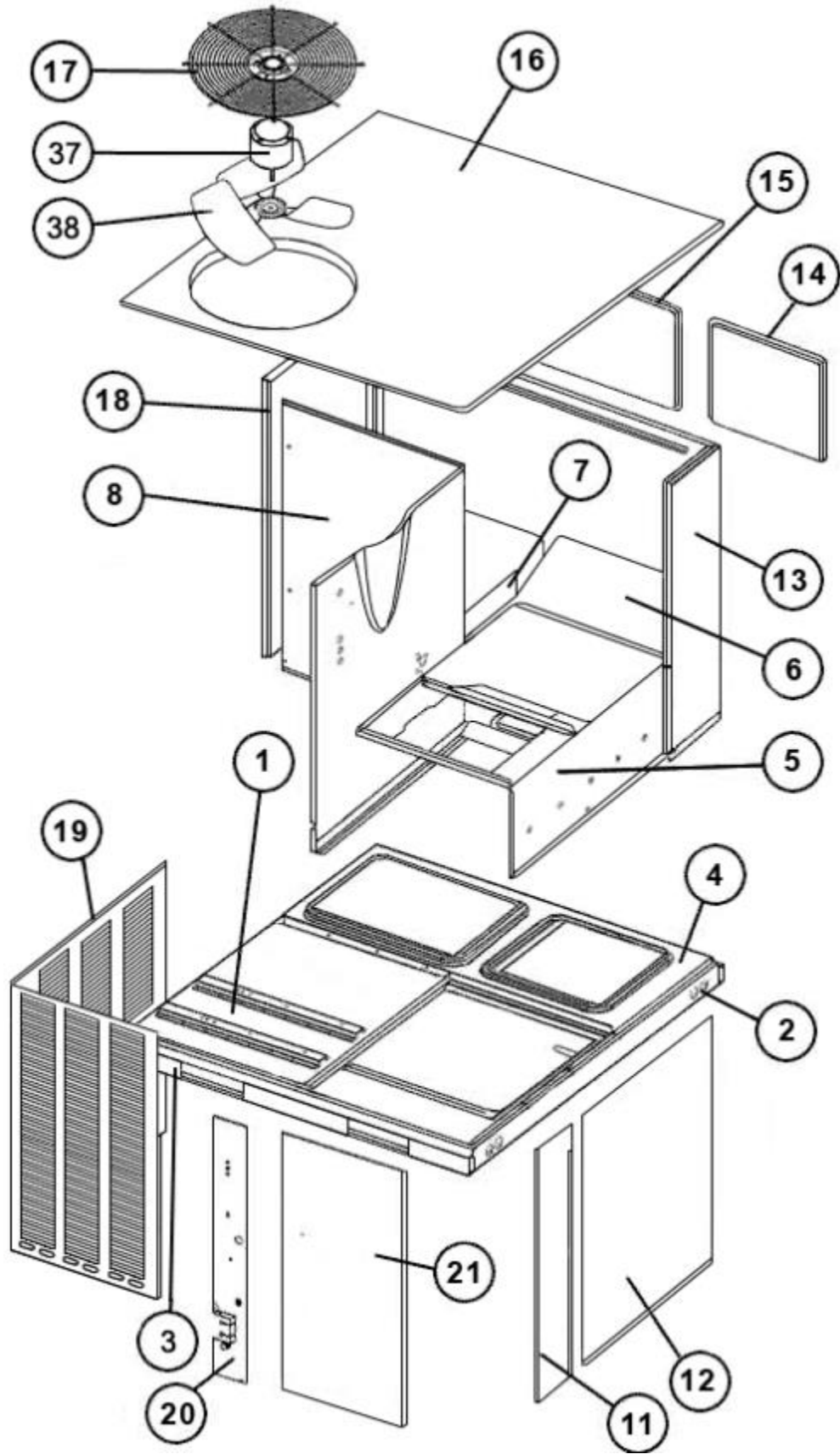
No.	Notes	MODEL COOLING CAPACITY MAJOR SERIES ELECTRICAL DESIGNATION MINOR SERIES	RACA14	RACA14	RACA14		RACA14	
			024 B J B	030 B J B	036 B J B		036 B C A	
<b>COMPRESSOR GROUP</b>								
		<b>Compressor ID:</b>	<b>9673</b>	<b>9674</b>	<b>9675</b>		<b>8859</b>	
71	Stk	Compressor	55-102045-97S	55-102045-31S	55-102045-66S		55-102045-90S	
72		Grommet (4)	56-18518-16	56-18518-16	56-18518-16		56-18518-16	
73	Stk	Capacitor - Compressor/Fan	43-101665-44	43-101665-26	43-101665-41		43-100496-04	
	Stk	Start Capacitor	N/A	N/A	N/A		N/A	
76		High Pressure Control	47-102290-04	47-102290-04	47-102290-04		47-102290-01	
77		Low Pressure Control	See Accessories Group					
	Stk	Compressor Wiring Harness (Molded Plug)	45-100834-03	45-100834-03	45-100834-03		45-100834-03	

No.	Notes	MODEL	RACA14	RACA14		RACA14
		COOLING CAPACITY	048	060		036
		MAJOR SERIES	B	B		B
		ELECTRICAL DESIGNATION	C	C		C
		MINOR SERIES	A	A		B
<b>COMPRESSOR GROUP</b>						
		Compressor ID:	8863	8865		9676
71	Stk	Compressor	55-102045-08S	55-23156-43		55-102045-90S
72		Grommet (4)	56-18518-06	56-18518-06		56-18518-16
73	Stk	Capacitor - Compressor/Fan	43-100496-12	43-100496-12		43-100496-04
76		High Pressure Control	<a href="#">47-102290-01</a>	<a href="#">47-102290-01</a>		47-102290-04
77		Low Pressure Control	See Accessories Group	<a href="#">47-101529-09</a>		See Accessories Group
	Stk	Compressor Wiring Harness (Molded Plug)	45-100834-03	45-100834-03		45-100834-03

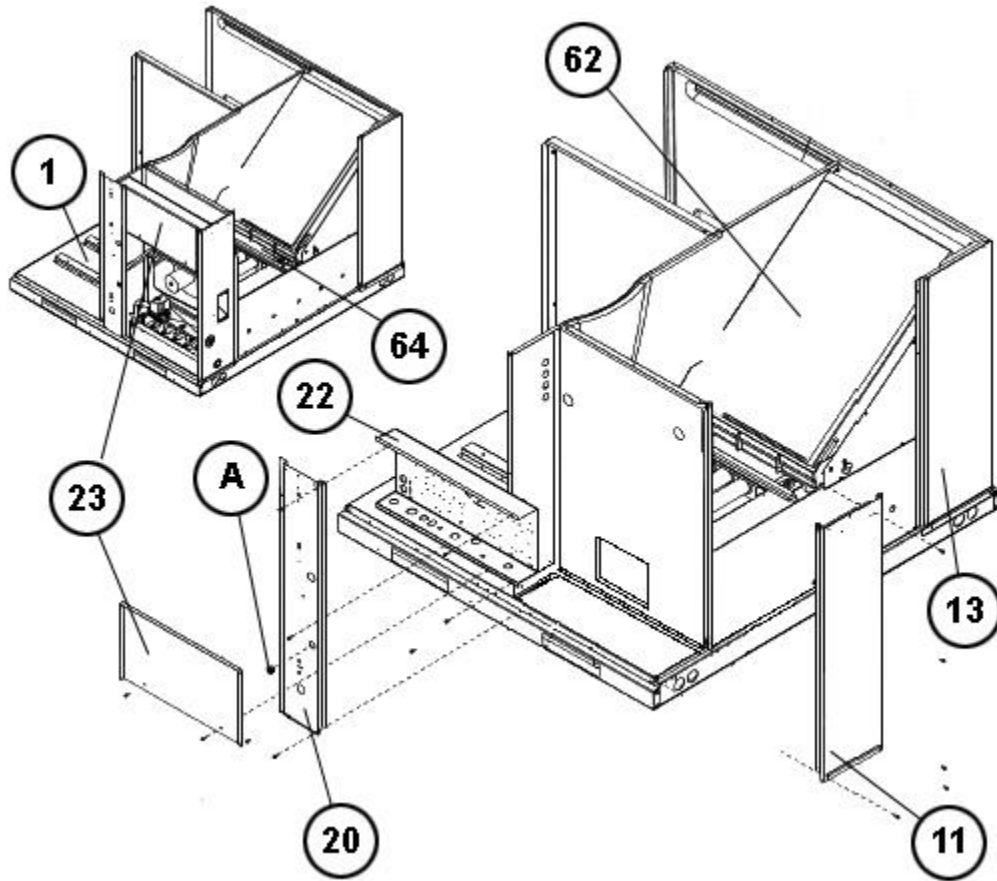
No.	Notes	MODEL	RACA14		RACA14	
		COOLING CAPACITY	060		060	
		MAJOR SERIES	C		C	
		ELECTRICAL DESIGNATION	C		J	
		MINOR SERIES	A		A	
<b>COMPRESSOR GROUP</b>						
		Compressor ID:	9596		9595	
71	Stk	Compressor	55-23156-73		55-23156-69	
72		Grommet (4)	56-18518-06		56-18518-06	
73	Stk	Capacitor - Compressor/Fan	43-100496-12		43-101665-36	
76		High Pressure Control	<a href="#">47-102290-01</a>		<a href="#">47-102290-01</a>	
77		Low Pressure Control	See Accessories Group			
	Stk	Compressor Wiring Harness (Molded Plug)	45-100834-03		45-100834-03	
		Compressor Wiring Harness Low Voltage	45-101723-01		45-101723-01	

No.	Notes	MODEL COOLING CAPACITY ELECTRICAL DESIGNATION	RACA14 ALL J	RACA14 ALL C
<b>HEATER KITS</b>				
		Heater Kit - 05 kW	RXQJ-A05J	N/A
		Heater Kit - 10 kW	<a href="#">RXQJ-A10J</a>	RXQJ-A10C
		Heater Kit - 15 kW	RXQJ-A15J	RXQJ-A15C

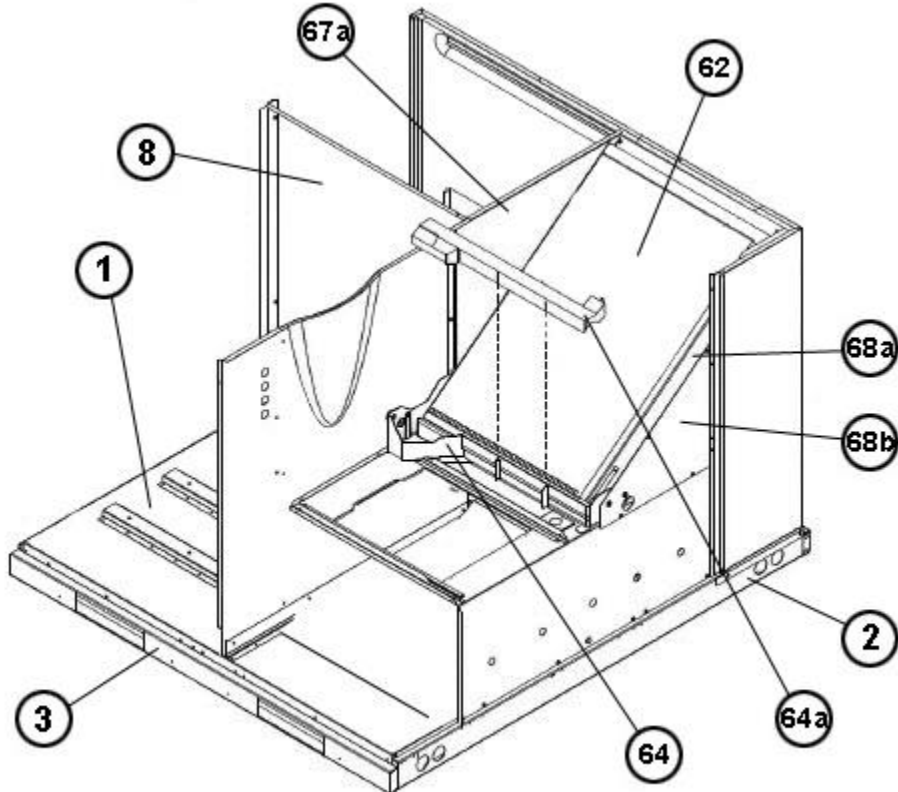
No.	Notes	MODEL VARIATIONS	RACA14 ALL	
<b>OPTIONS AND ACCESSORIES</b>				
		Economizer - Downflow, 3 Position	AXRE-CAA30	
		Economizer - Downflow, Fully Modulating	AXRD-CAM10	
		Economizer - Horizontal, 3 Position	AXRE-CCA30	
		Economizer - Horizontal, Fully Modulating	AXRD-CCM10	
		Fresh Air Damper - Fixed, 35%	AXRF-FAA1	
		Fresh Air Damper - Motorized, 35%	AXRF-FAB1	
		Low Ambient Control	RXRZ-B01	
76		High Pressure Control	RXAB-E01	
77		Low Pressure Control	RXAC-C01	



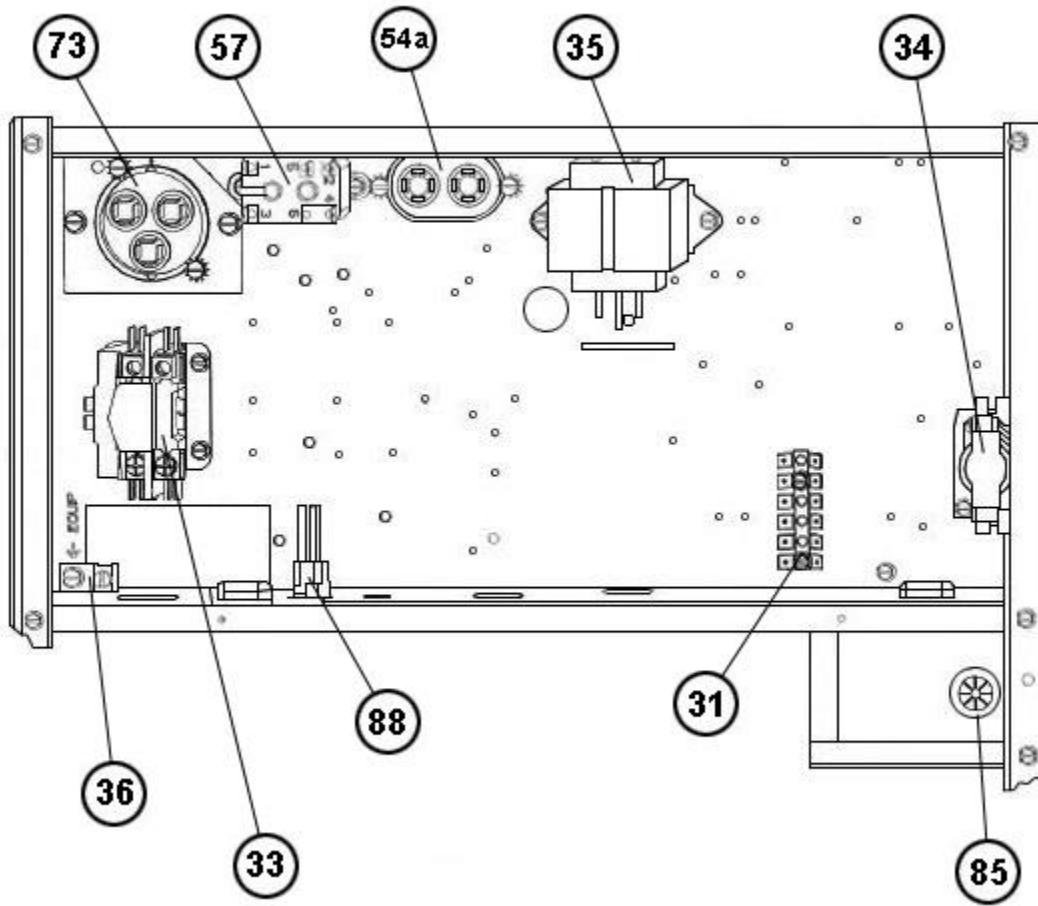
Exploded View



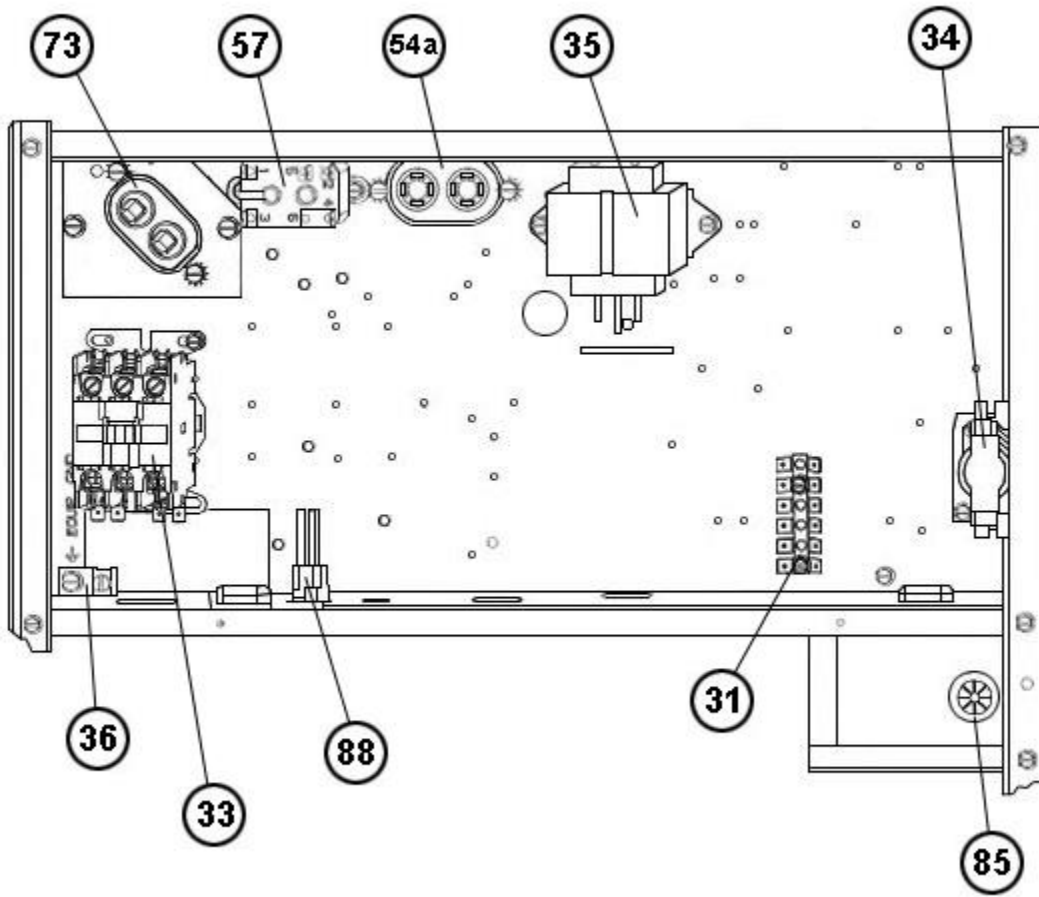
Control Access Panel, Evap Coil



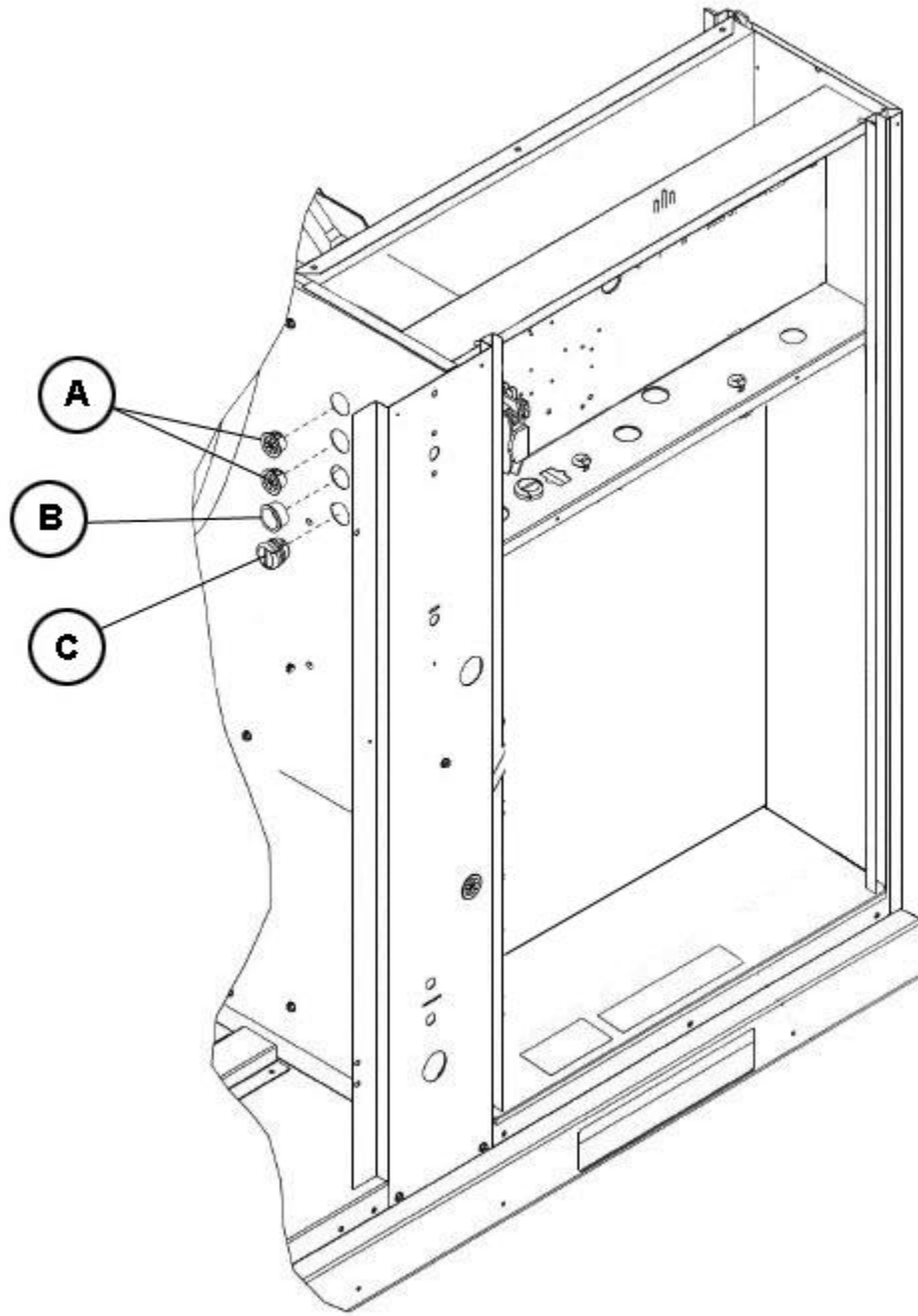
Evaporator Coil



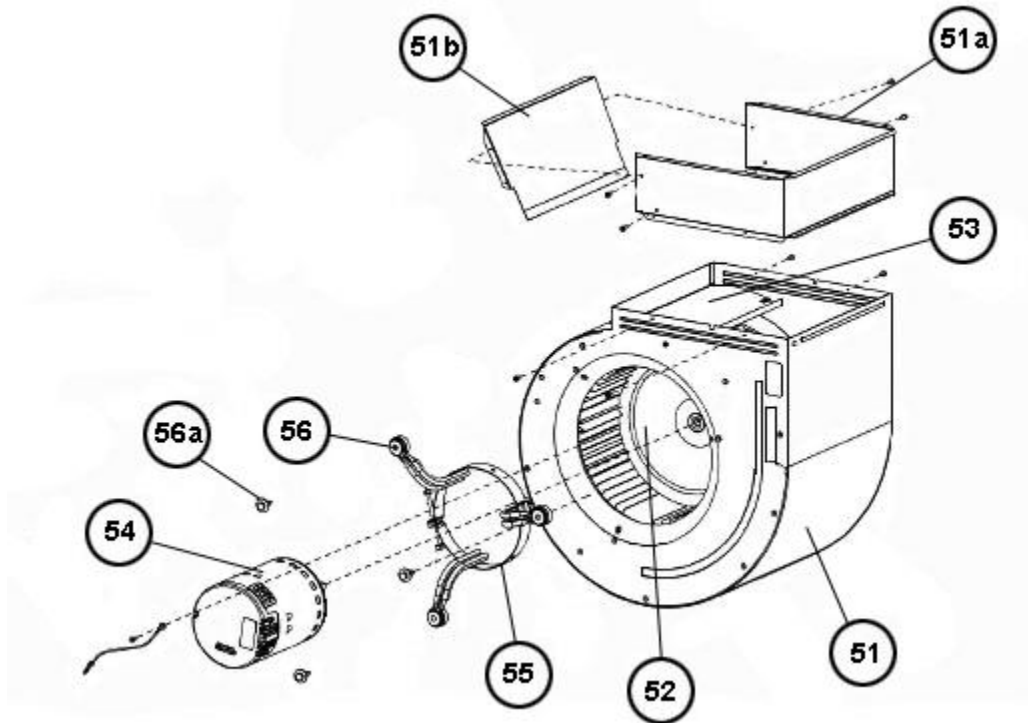
Electrical Control Box (1)



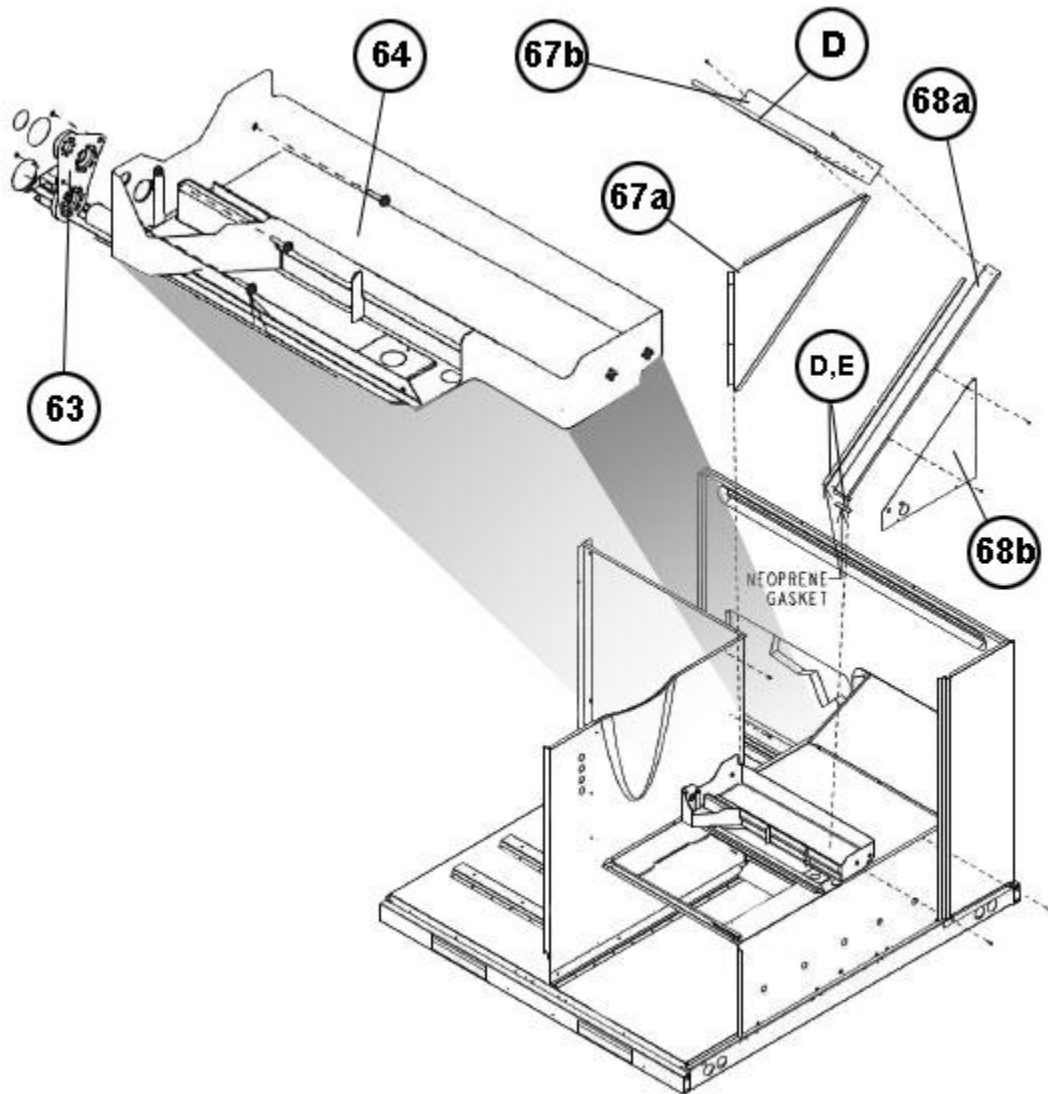
Electrical Control Box (2)



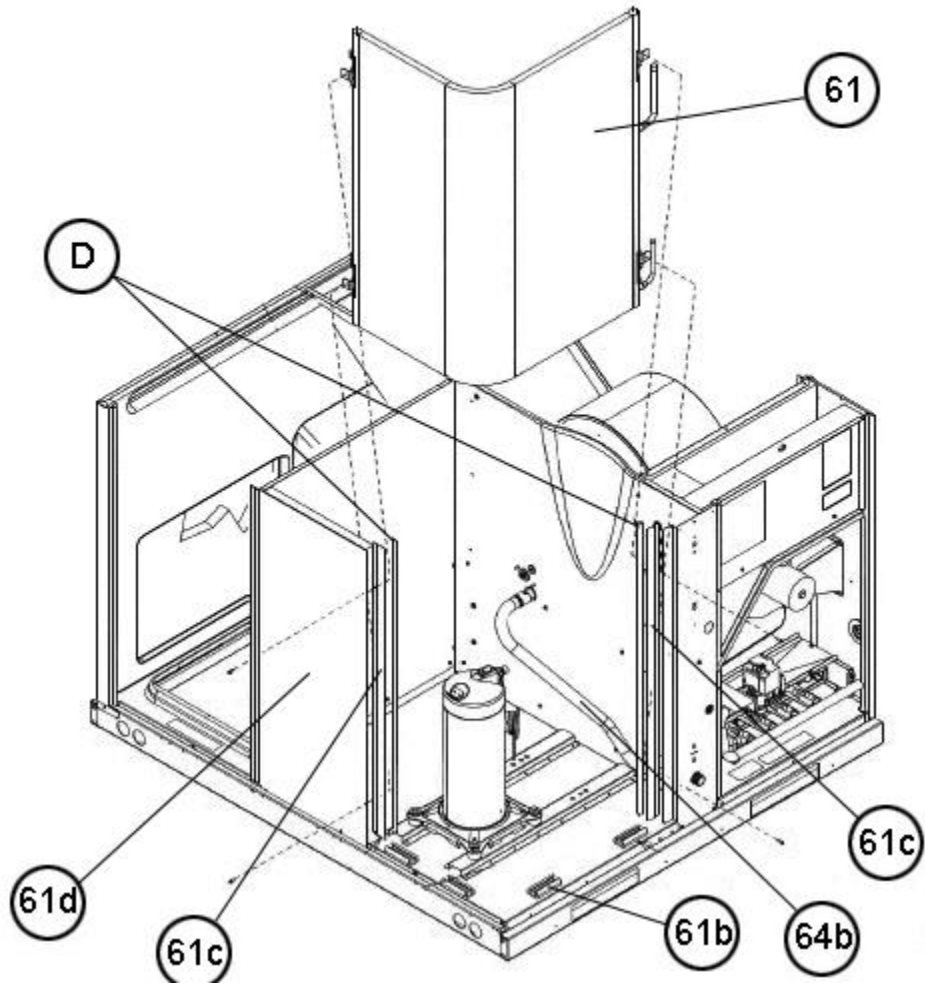
Bushings - Bulkhead Wiring



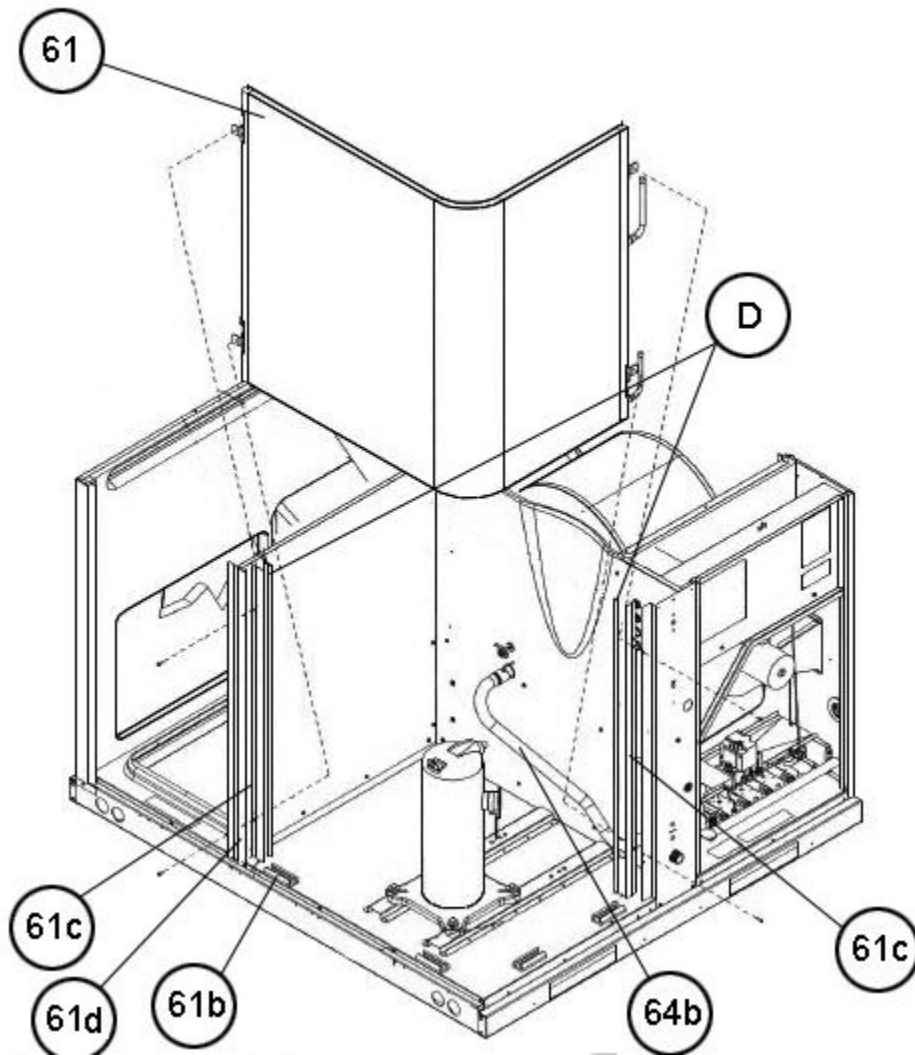
Blower Assembly



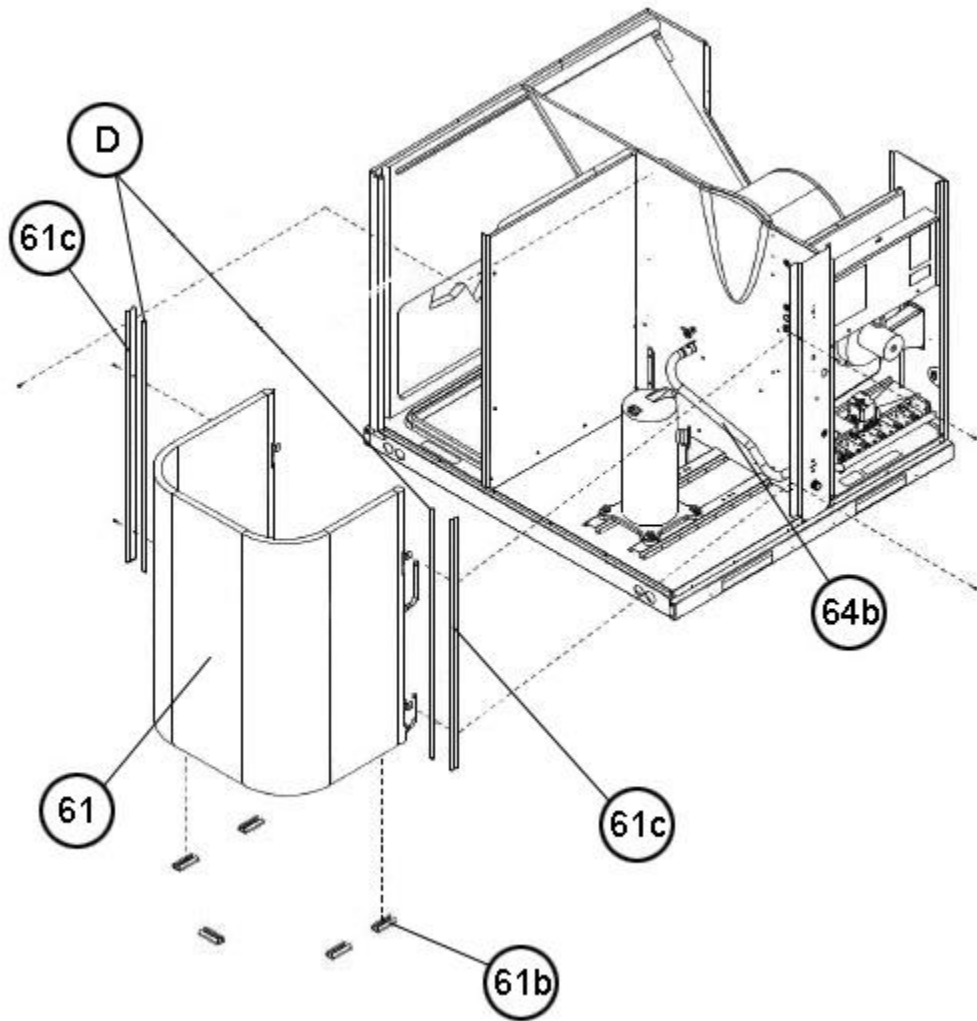
Coil Frames, Drainpan



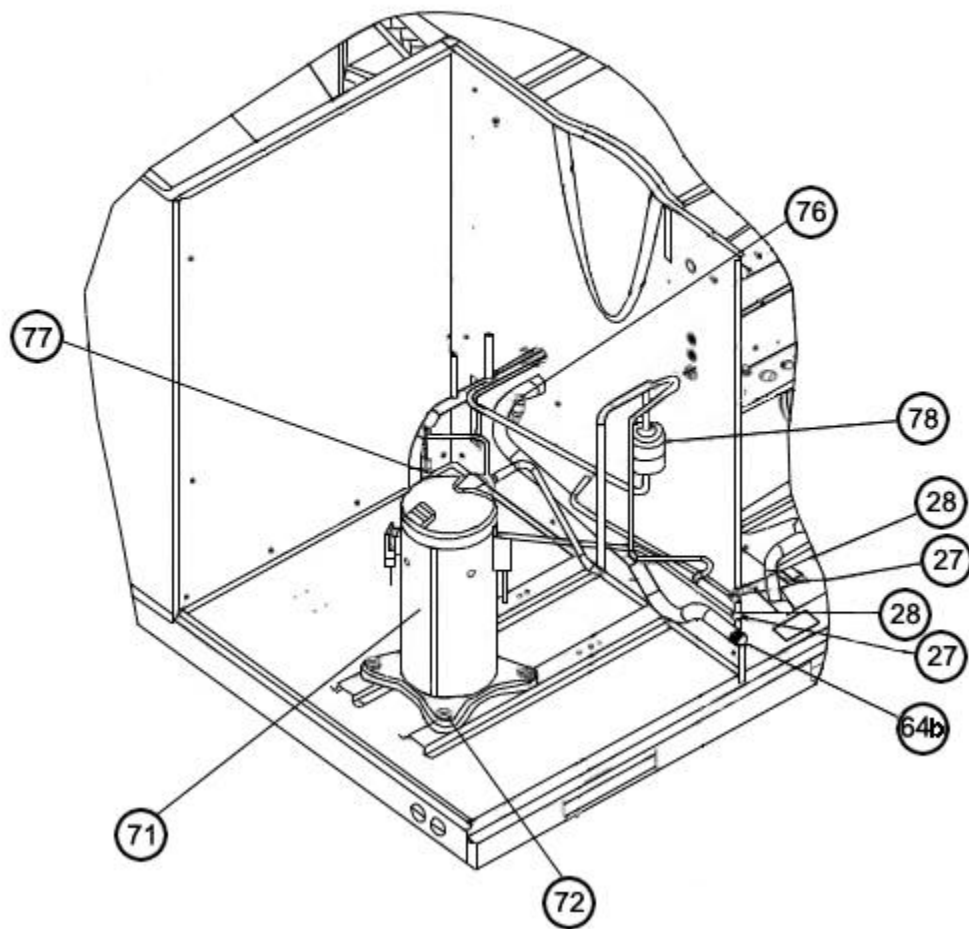
Condenser Coil 2 Ton



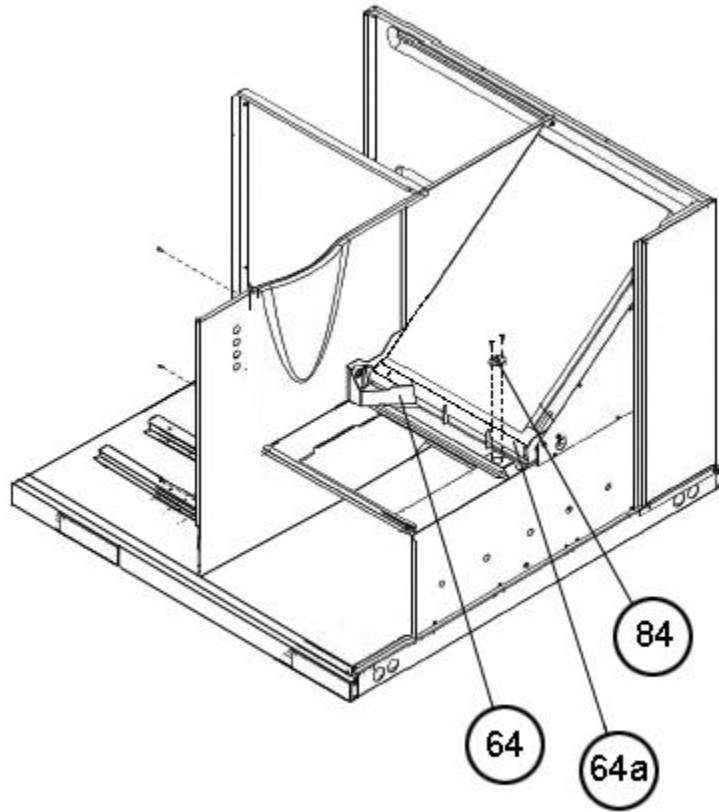
Condenser Coil 2.5 - 3 Ton



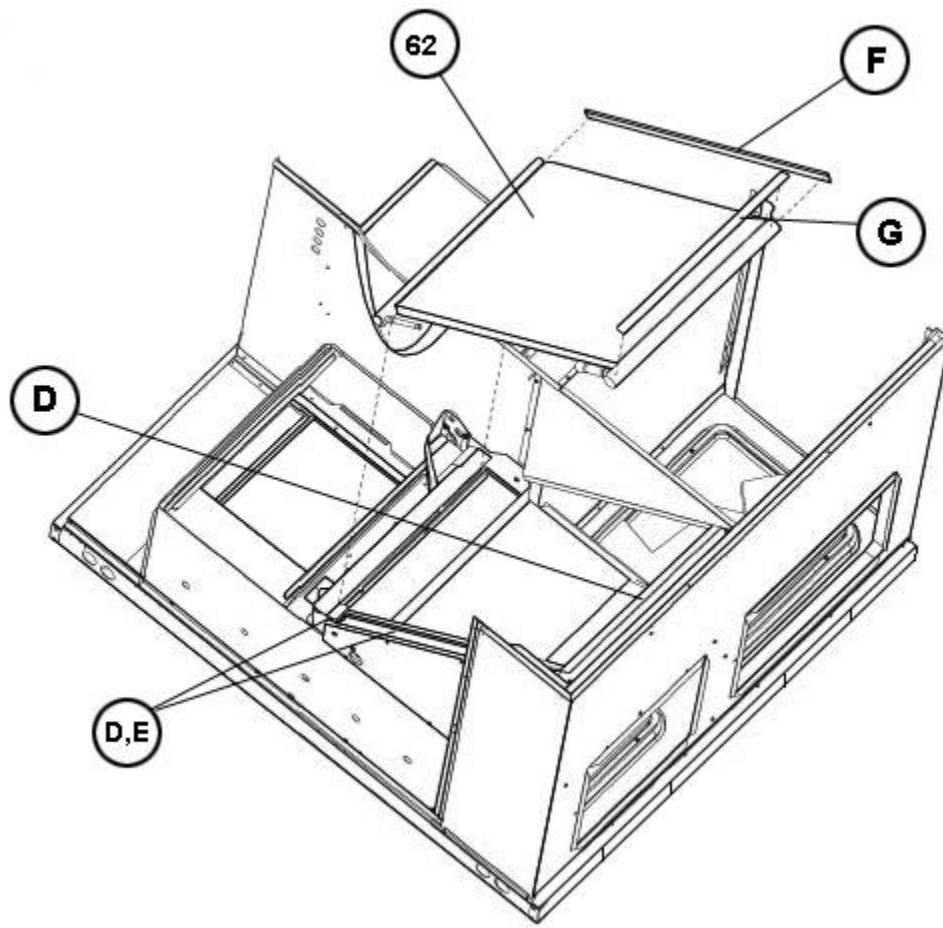
Condenser Coil 3.5 - 4 - 5 Ton



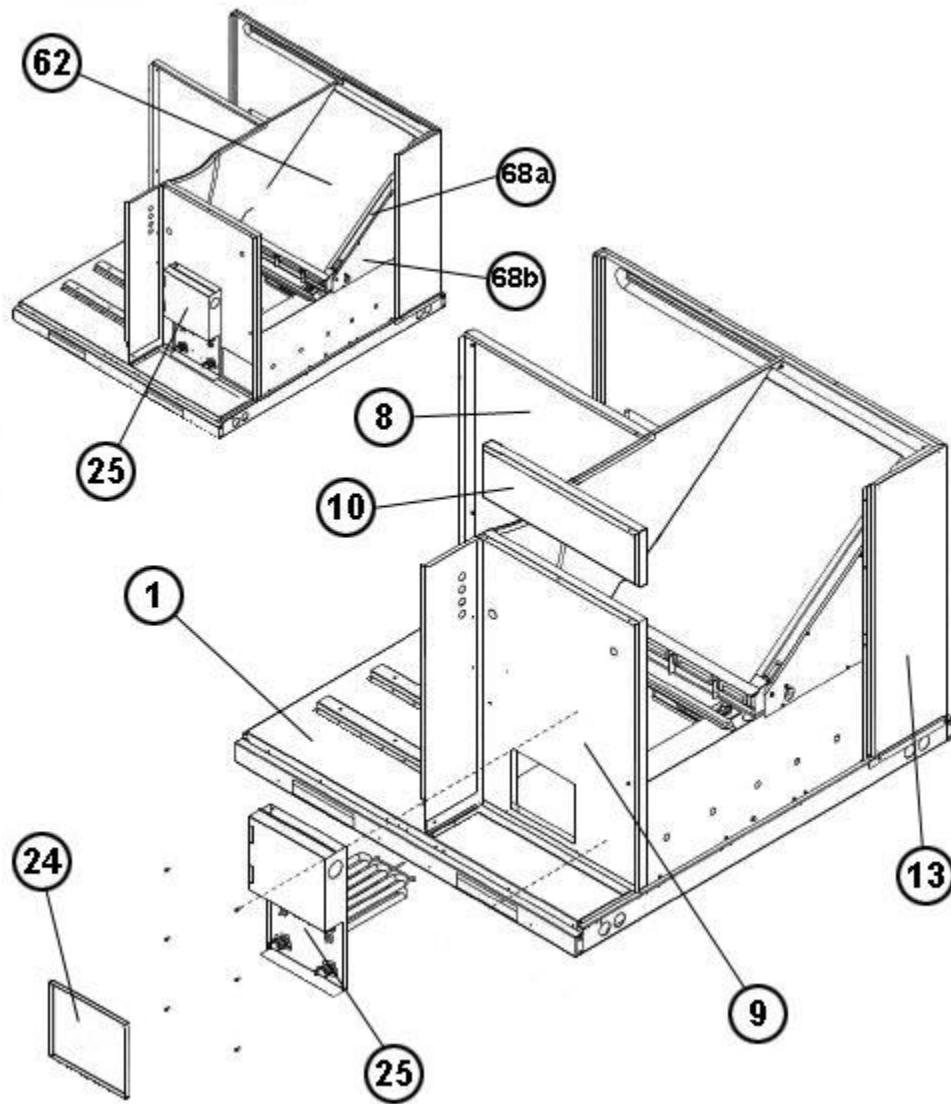
Compressor and Refrigeration Components



Limit Control - Blower Shelf



Evaporator Coil Gaskets



Heater Mounting - Panels

# NOTES

Stk It is recommended that stock be maintained for this part.  
N/A Not Applicable

**DISCLAIMER:** This document is intended to provide general replacement parts information to aid qualified service personnel in the repair of these models. The complete Model and Serial Number of the unit under repair should be specified when selecting and ordering replacement parts. Specifications and illustrations are subject to change without notice. Document 92-42800-RACA14 supersedes all previous parts lists for these models. See <http://www.rheempartslists.net/92-42800-RACA14> for the latest revision of this document. The manufacturer assumes no obligation for errors or omissions. Service personnel must verify the proper and safe operation of equipment after the replacement of any original components.