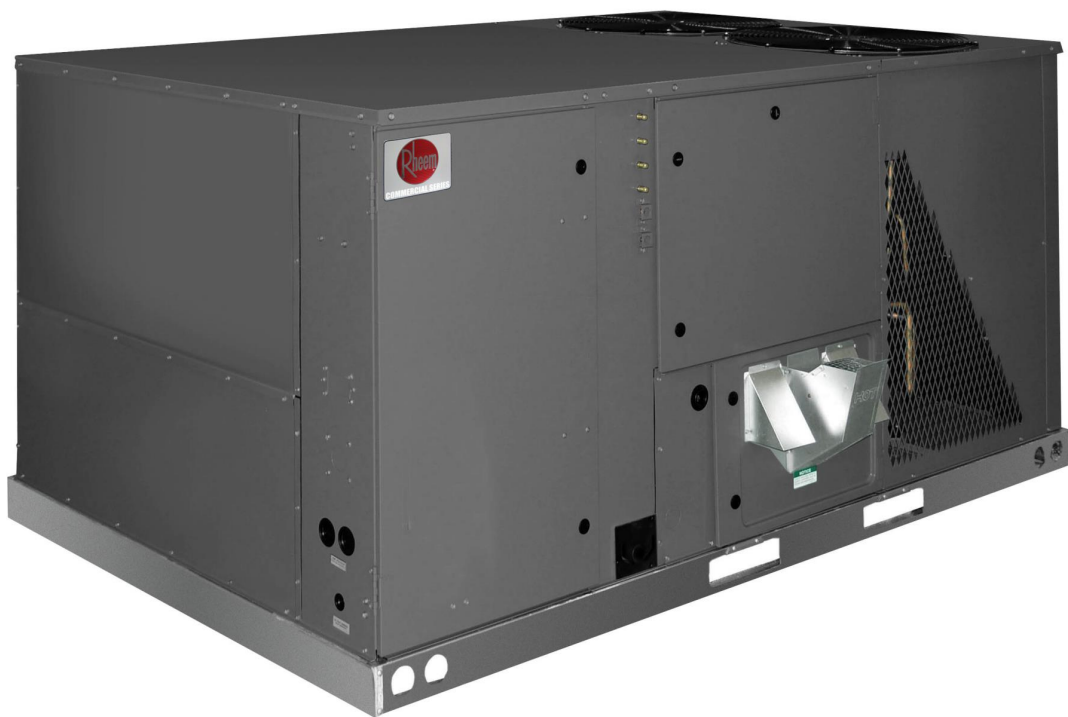




RKHL-D

Parts List
06-September-2018



*This parts list is current as of the above revision date.
See <http://www.rheempartslists.net/92-42800-RKHL-D.pdf> for the current revision.*

Package Gas-Electric - Commercial

Table of Contents

Model Explanation	Page 3
Parts Numbers	
Panels - Miscellaneous 120 (1)	Page 4
Panels - Miscellaneous 120 (2)	Page 5
Panels - Miscellaneous 180 (1)	Page 6
Panels - Miscellaneous 180 (2)	Page 7
Electrical Group 120	Page 8
Electrical Group 180	Page 9
Fan Group	Page 10
Blower Group 120	Page 11
Blower Group 180	Page 12
Coil Parts 120	Page 13
Coil Parts 180	Page 14
Compressor Group	Page 15
Heat Exchanger-Burner Group 120	Page 16
Heat Exchanger-Burner Group 180	Page 17
Gas Controls	Page 18
Accessories 120	Page 19
Accessories 180	Page 20
Orifice Selection Chart	Page 21
Drawings/Photographs	
Exploded View 120	Page 22
Exterior - Front 120	Page 23
Exterior - Back 120	Page 23
Interior - Front 120	Page 24
Filter-Coil Assembly 120	Page 25
Condenser Coil Assembly 120	Page 25
Heat Exchanger Assembly 120	Page 26
Front Panel Brackets 120	Page 26
Filter Frame Assembly 120	Page 27
Blower Assembly 120	Page 27
Hybrid Assembly 120	Page 28
Control Box 120	Page 29
Low Voltage Shields 120	Page 30
Exterior - Front 180	Page 31
Exterior - Back 180	Page 32
Base Rail Assembly 180	Page 33
Base Pan Assembly 180	Page 34
Condenser Bulkhead 180	Page 35
Heat Compartment 180	Page 36
Interior - Front 180	Page 37
Interior - Back 180	Page 38
Filter Frame - Low Voltage Shields 180	Page 39
Condenser Coil - 180	Page 40
Heat Exchanger Assembly 180	Page 41
Burner Assembly 180	Page 42
Pressure Switch - Mounting 180	Page 43
Front Panel Brackets 180	Page 44
Blower Assembly 180	Page 45
Control Box 180	Page 46
Hybrid Assembly 180	Page 47
Notes/Disclaimer	Page 48

MODEL NUMBER EXPLANATION

R	K	H	L	-	D	1	2	0	C	L	1	5	E	A	A	C
1	2	3	4		5	6			7	8	9		10	10		11

- | | |
|---|--|
| <p>1 TRADE NAME</p> <p>2 K = PACKAGE GAS / ELECTRIC
Commercial</p> <p>3 EFFICIENCY DESIGNATION
H = Hybrid - Gas Electric/Water Heater</p> <p>4 DESIGN SERIES
L = R-410A</p> <p>5 TECHNICAL VARIATION
D = High Efficiency with DDC</p> <p>6 COOLING CAPACITY (BTU/HR)
120 = 120,000
180 = 180,000</p> <p>7 ELECTRICAL DESIGNATION
C = 208-230/3/60
D = 460/3/50</p> | <p>8 DRIVE PACKAGE
L = Belt Drive
M = Belt Drive - High Static</p> <p>9 HEATING CAPACITY (MBH)
15 = 150,000
22 = 220,000
25 = 250,000
35 = 350,000</p> <p>10 IGNITION SYSTEM
E = Electric Ignition</p> <p>11 OPTION CODES
AA = No Options</p> <p>12 ECONOMIZER OPTIONS
A = No Economizer
H = Single Enthalpy Economizer with Barometric Relief
J = Single Enthalpy Economizer with Barometric Relief and smoke detector</p> |
|---|--|

SERIAL NUMBER EXPLANATION (Units Produced before Nov. 2013)

2	P	A	1	2	3	4	A	D	A	A	F	0	5	0	9	0	0	0	1	
(1)	(2)	(3)			(4)	(5)	(6)	(7)	(8)	(9)	(10)		(11)							

- | | |
|--|---|
| <p>(1) GAS CODE</p> <p>(2) BLOWER CONTROL BOARD</p> <p>(3) COMPRESSOR IDENTIFICATION NUMBER</p> <p>(4) IGNITION DEVICE</p> <p>(5) INDUCER BLOWER</p> <p>(6) HEAT EXCHANGER</p> | <p>(7) TECHNOLOGY VARIATIONS</p> <p>(8) PLANT
F = Fort Smith, AR</p> <p>(9) WEEK</p> <p>(10) YEAR</p> <p>(11) PRODUCTION NUMBER</p> |
|--|---|

SERIAL NUMBER EXPLANATION (Units Produced after Nov. 2013)

F	0	8	1	3	9	9	9	9
(1)	(2)	(3)			(4)			

- (1) PLANT CODE
- (2) WEEK (DATE CODE)
- (3) YEAR
- (4) PRODUCTION NUMBER

**Note: For Compressor Identification Number, see Compressor Code on Rating Plate
For Gas Code, see Control System Gas Code on Rating Plate**

No.	Notes	MODEL TECHNICAL VARIATION COOLING CAPACITY	RKHL- D 120
PANELS - RAILS, BASE PANS, INSIDE CABINET			
BASE RAILS:			
A		Base Rail - Front	AE-90575-15
B		Base Rail - Right	AE-90576-03
C		Base Rail - Rear	AE-90575-04
D		Base Rail - Left	AE-90576-04
BASE PANS:			
E		Outdoor Coil Base Pan	AS-90577-23H
F		Indoor Coil Base Pan	AS-90577-12
INSIDE CABINET:			
G		Entry Plate	AE-90614-01
H		Entry Plate	AE-90614-01
J		Heat Compartment Side	AE-90598-10
K		Blower Deck	AS-90592-16
L		Wireway	AE-90718-05
M		Condenser Bulkhead	AS-90609-42

No.	Notes	MODEL TECHNICAL VARIATION COOLING CAPACITY	RKHL- D 120
PANELS - FRONT			
1		Control Box Door Assembly - w/Hinges, Latch, Gasket, Insulation	AS-102872-23H
2a		Bracket - Top Panel (Left)	AS-102859-16H
2b		Bracket - Top Panel (Center)	AS-102859-15H
2c		Post - Blower Section	AS-102682-15H
3a		Bracket - Bottom Panel (Left)	AS-102859-17H
3b		Bracket - Blower/Heater Compartment	AS-102859-14H
3c		Bracket - Bottom Panel (Right)	AS-102859-13H
		Latch Assembly - Control Box Door (2)	64-103465-01
4		Post Assembly - Indoor Coil Section	AS-90620-25H
5		Control Box Cover	AE-90713-06
6		Control Mounting Plate	AE-90712-06
7a		Low Voltage Shield - Upper Angled	AE-90742-12
7b		Low Voltage Shield - Middle Strip	AE-90742-14
7c		Low Voltage Shield - Lower Angled	AE-90742-13
8		Control Box Back Insulation Assembly	AS-90601-07
9		Mounting Bracket	AE-90779-02
		Outlet Flue Hood	AS-102966-01
		Inlet Flue Hood (2)	AE-90745-04
12		Gas Heat Access Panel Assembly - w/Hinges, Latch, Gasket, Insulation	AS-102872-20H
		Latch Assembly - Electric Heat Door (2)	64-103465-01
13		Gas Pipe Support Plate	AS-90774-10H
14		Blower Access Panel Assembly - w/Hinges, Latch, Gasket, Insulation	AS-102872-22H
		Latch Assembly - Blower Access Panel (3)	64-103465-01
16		Heat Exchanger Mounting Frame Assembly	AS-90754-01
17		Condenser Coil Access Panel - Front	AS-90631-18H
18		Front Corner Post	AS-90701-10H

No.	Notes	MODEL TECHNICAL VARIATION COOLING CAPACITY	RKHL- D 120
PANELS - RIGHT, REAR AND LEFT SIDES			
		RIGHT:	
19		Air Stop	N/A
20		Louver Panel Assembly	See Accessories
		REAR:	
21		Rear Corner Post	AS-90702-08H
22		Condenser Coil Access Panel-Rear	AS-90631-19H
23		Rear Panel	AS-90618-13H
24		Supply Cover	AS-90626-02H
25		Return Cover	AS-90628-02H
		LEFT:	
26		Upper Left Panel	AS-90624-03H
27		Lower Left Panel	AS-90624-04H
28		Left Corner Panel	AS-90755-08H
29		Plate - Receptacle	AS-90756-02H
30		Plate - Disconnect	AS-90756-03H
31		Button Plug (2)	45-22980-06
32		Button Plug	45-22980-05
		TOP:	
33		Top Panel Assembly	AS-90616-06H
34		Condenser Top Panel	AS-102872-21H
35		Venturi	AS-90632-03H (2)
36		Wire Grille	95-100906-09 (2)
43		Drain Pan - Removable	See Coil Group

No.	Notes	MODEL TECHNICAL VARIATION COOLING CAPACITY	RKHL- D 180
PANELS - RAILS, BASE PANS, INSIDE CABINET			
BASE RAILS:			
A		Front	AS-90827-03
B		Right	AE-90576-06
C		Rear	AS-90827-04
D		Left	AE-90576-05
BASE PANS:			
E		Outdoor Base Pan (includes insulation)	AS-90577-16H
F		Indoor Coil Base Pan - Return Air (includes insulation)	AS-90577-09
G		Indoor Coil Base Pan - Supply Air (includes insulation)	AS-90577-10
INSIDE CABINET PANEL/PIECES:			
H 1		Entry Plate	AE-90614-01
H 2		Entry Plate - Rooftop	AE-90614-01
J		Heat Compartment Side	AE-90598-12
K		Blower Deck Assembly	AS-90592-18
L		Wireway	AE-90718-04
M		Condenser Bulkhead (includes insulation)	AS-90609-44
O		Bulkhead Support	AE-102725-01
P		Primary Drain Pan	AS-103030-02
		Air Stop - Outdoor Coil- Front	AE-90706-21
		Air Stop - Outdoor Coil- Rear	AE-90706-20
U		Coil Support Top	AE-102700-07
V		Angle - Tube Support (2)	AE-90600-02

No.	Notes	MODEL TECHNICAL VARIATION COOLING CAPACITY	RKHL- D 180
PANELS - FRONT AND RIGHT SIDES			
1		Control Box Door Assembly - w/Hinges, Gasket, Insulation	AS-102872-04H
2a		Bracket - Top Panel (Left)	AS-102859-01H
2b		Bracket - Top Panel (Center)	AS-102969-01H
2c		Post - Blower Section	AS-102682-21H
3a		Bracket - Bottom Panel (Left)	AS-102859-02H
3b		Bracket - Blower/Heater Compartment	AS-102859-04H
3c		Bracket - Bottom Panel (Right)	AS-102859-05H
4		Post Assembly - Indoor Coil Section	AS-90620-15H
5		Control Box Cover	AE-90713-05
6		Control Mounting Panel	AE-90712-05
7a		Low Voltage Shield - Control Box (Upper Right)	AE-90742-07
7b		Low Voltage Shield - Control Box (Lower Left)	AE-90742-06
7c		Thermostat Chase Cover	AE-102722-01
8		Control Box Back	AS-90601-05
9		Mounting Bracket	AE-90779-02
		Outlet Flue Hood	AS-102966-01
		Inlet Flue Hood (2)	AE-90745-04
12		Gas Heat Access Panel Assembly - w/Hinges, Gasket (25E)	AS-102872-11H
12		Gas Heat Access Panel Assembly - w/Hinges, Gasket (35E)	AS-102872-12H
13		Power Entry Plate Assembly	AS-90774-12H
14		Blower Access Panel Assembly - w/Hinges, Gasket, Insulation	AS-102872-02H
16		Mounting Frame - Heat Exchanger Frame	AS-90754-03
17		Condenser Coil Access Panel - Front	AS-90734-14H
		Louver Panel Assembly	See Accessories

No.	Notes	MODEL TECHNICAL VARIATION COOLING CAPACITY	RKHL- D 180
PANELS - REAR, LEFT, AND TOP			
REAR:			
22		Condenser Coil Access Panel-Rear	AS-90734-15H
23		Rear Panel - Right	AS-90618-14H
24		Supply Cover	AS-90628-03H
25		Return Cover	AS-90628-04H
		Left Rear Panel (mounting panel for Return Cover)	AS-90618-07HT
LEFT:			
26		Upper Left Panel	AS-90624-09H
27		Lower Left Panel	AS-90624-08H
28		Left Corner Panel Assembly	AS-90755-05H
		Bracket - Left Corner Panel Assembly (2)	AE-90779-01
		Gasket for receptacle plate	68-42514-08
		Gasket for disconnect plate	68-42514-09
29		Plate - Install inside Panel-Receptacle	AS-90756-02H
30		Plate - Install inside Panel-Disconnect	AS-90756-03H
31		Button Plug (3)	45-42558-01
32		Star Bushing (3)	45-18515-01
TOP:			
33a		Top Panel Assembly - Right	AS-90616-04H
33b		Top Panel Assembly - Left	AS-90616-05H
34		Top Panel	AS-90703-11H
35		Venturi	AS-90632-03H (3)
36		Wire Grille	95-100906-09 (3)
43		Drain Pan - Removable	See Coil Group

No.	Notes	MODEL TECHNICAL VARIATION COOLING CAPACITY ELECTRICAL DESIGNATION	RKHL- D 120 C	RKHL- D 120 D
ELECTRICAL GROUP				
		Outlet Box	45-41952-02	45-41952-02
		Cover - Receptacle	45-41953-02	45-41953-02
		Receptacle/Ground Fault	45-41954-01	45-41954-01
CONTROL BOX COMPONENTS (57a - 62):				
57a	Stk	Transformer - Control	46-42515-04	46-42515-05
57b	Stk	Transformer - Power Step Down	N/A	46-103972-02
58a		Double Row Terminal Block	45-42548-02	45-42548-02
58b		Ground Lug	45-19000-02	45-19000-02
59a	Stk	Contactors - Blower	42-102664-08	42-102664-08
59b	Stk	Relay - Outdoor Fan	42-102234-01	42-102234-01
59c	Stk	Relay - Water Shutoff	42-102234-01	42-102234-01
60		Capacitor - Fan Motor	See Fan Group	
61a		Unit Controller (RTU-C)	47-102883-02	47-102883-02
61b		eSYNC Controller	47-104045-01	47-104045-01
61c		Integrated Furnace Control Board (IFC)	See Gas Controls	
62	Stk	Contactors - Compressor (2)	42-102664-08	42-102664-08
		Comfort Alert	42-101504-03	42-101504-03
		Bracket - Comfort Alert	AE-103462-01	AE-103462-01
MISCELLANEOUS:				
		Pressure Switch Assembly - (Clogged Filter and Fan Proving)	42-103320-27	42-103320-27
		Disconnect Switch Assembly	42-42559-02	42-42559-02
		Low Ambient Assembly	AS-103034-01	AS-103034-01
		High Pressure Control	See Coil Group	
		Low Pressure Control	See Coil Group	
		Pressure Switch	See Heat Exchanger Group	
WIRING HARNESES:				
		Wiring Harness - Outdoor Fan Motor #1	See Fan Group	
		Wiring Harness - Outdoor Fan Motor #2	See Fan Group	
		Wiring Harness - Economizer (Twist-Loc, 12 Pin and 4 Pin to 9 Pin)	45-42522-100	45-42522-100
		Jumper - Configuration Plug (7 Pin Connector)	45-42522-97	45-42522-97
		Wiring Harness - Compressor Control (14 Pin and Four 2 Pin Connectors and 3 Temperature Sensors) - See Note 3	45-42522-99	45-42522-99
		Wiring Harness - IFC Communication (4 Pin to 4 Pin)	45-42522-95	45-42522-95
		Wiring Harness - Clogged Filter Switch/Fan Proving Switch (8 Pin to 4 Connectors and 2 Temperature Sensors) - See Note 3	45-42522-98	45-42522-98
		Wiring Harness - Twist-Loc (12 Pin from IFC), Heat Capacity 15E	45-102706-06	45-102706-06
		Wiring Harness - Twist-Loc (12 Pin from IFC), Heat Capacity 22E	45-102706-10	45-102706-10
		Wiring Harness - Pressure Transducer (Refrigerant)	45-104130-02	45-104130-02
		Plug Harness - Compressor	See Compressor Group	
		Wiring Harness - Draft Inducer	45-42522-19	45-42522-19
		Bypass Plug - Economizer 12 Pin	AS-61997-55	AS-61997-55

No.	Notes	MODEL TECHNICAL VARIATION COOLING CAPACITY ELECTRICAL DESIGNATION	RKHL- D 180 C	RKHL- D 180 D
ELECTRIC GROUP				
CONTROL BOX COMPONENTS:				
57a	Stk	Transformer - Control	46-42515-04	46-42515-05
57b	Stk	Transformer - Power Step Down	N/A	46-103972-02
58a		Terminal Block - Double Row	45-42548-02	45-42548-02
58b		Terminal Block	45-21134-04	45-21134-04
58c		Ground Lug	45-19000-02	45-19000-02
59a	Stk	Contactora - Blower	42-102664-08	42-102664-08
59b	Stk	Relay - Outdoor Fan	42-19736-05	42-19736-05
59c	Stk	Relay - Water Shutoff	42-102234-01	42-102234-01
60		Run Capacitor	See Fan Group	
61a		RoofTop Unit Controller (RTU-C)	47-102883-02	47-102883-02
61b		Integrated Furnace Control Board (IFC)	See Gas Controls	
61c		eSYNC Controller	47-104045-01	47-104045-01
62a	Stk	Compressor Contactor	42-102664-12	42-102664-12
62b	Stk	Compressor Contactor	42-102664-12	42-102664-12
62c		Comfort Alert	42-101504-03	42-101504-03
MISCELLANEOUS:				
		Pressure Switch Assembly - (Clogged Filter and Fan Proving)	42-103320-27	42-103320-27
		High Pressure Control	See Coil Group	
		Low Pressure Control	See Coil Group	
		Pressure Switch	See Heat Exchanger Group	
WIRING HARNESES:				
		Wiring Harness - Fan Motor	See Fan Group	
		Plug Harness - Compressor	See Compressor Group	
		Bypass Plug - Economizer 12 Pin	AS-61997-55	AS-61997-55
		Wiring Harness - Induced Draft Blower (25E Heat Capacity)	45-42522-87	45-42522-87
		Wiring Harness - Induced Draft Blower (35E Heat Capacity)	45-42522-86	45-42522-86
		Wiring Harness - Twist-Loc, Economizer (12 Pin and 4 Pin to 9 Pin)	45-42522-93	45-42522-93
		Wiring Harness - Furnace Control (12 pin to 12 wire leads - Twist Loc)	45-42522-88	45-42522-88
		Wiring Harness - Compressor Control (14 Pin to Four 2 Pin Connectors and 3 Temperature Sensors) - See Note 3	45-42522-78	45-42522-78
		Wiring Harness - 4 Pin to 4 Pin (IFC Communication)	45-42522-95	45-42522-95
		Jumper - 7 Pin Connector (Unit Configuration)	45-42522-97	45-42522-97
		Wiring Harness - Clogged Filter Switch/Fan Proving Switch (8 Pin to 4 Connectors and 2 Temperature Sensors) - See Note 3	45-42522-98	45-42522-98

No.	Notes	MODEL TECHNICAL VARIATION COOLING CAPACITY ELECTRICAL DESIGNATION	RKHL- D 120 C
FAN GROUP			
52	Stk	Fan Motor (2)	51-42534-24
		Wirng Harness - Outdoor Fan Motor #1	45-102706-21
		Wirng Harness - Outdoor Fan Motor #2	45-102706-22
53	Stk	Fan Blade (2)	70-42572-04
60	Stk	Capacitor - Fan Motor (2)	43-100496-12

No.	Notes	MODEL TECHNICAL VARIATION COOLING CAPACITY ELECTRICAL DESIGNATION	RKHL- D 120 D
FAN GROUP			
52	Stk	Fan Motor (2)	51-42534-25
		Wirng Harness - Outdoor Fan Motor #1	45-102706-21
		Wirng Harness - Outdoor Fan Motor #2	45-102706-22
53	Stk	Fan Blade (2)	70-42572-04
60	Stk	Capacitor - Fan Motor (2)	43-100496-12

No.	Notes	MODEL TECHNICAL VARIATION COOLING CAPACITY ELECTRICAL DESIGNATION	RKHL- D 180 C
FAN GROUP			
52	Stk	Fan Motor (3)	51-42534-24
		Wirng Harness - Motor #1, #2	45-42522-71
		Wirng Harness - Motor #3	45-42522-114
53	Stk	Fan Blade (3)	70-42572-04
60	Stk	Capacitor - Fan Motor (3)	43-100496-12

No.	Notes	MODEL TECHNICAL VARIATION COOLING CAPACITY ELECTRICAL DESIGNATION	RKHL- D 180 D
FAN GROUP			
52	Stk	Fan Motor (3)	51-42534-25
		Wirng Harness - Motor #1, #2	45-42522-71
		Wirng Harness - Motor #3	45-42522-114
53	Stk	Fan Blade (3)	70-42572-04
60	Stk	Capacitor - Fan Motor (3)	43-100496-12

No.	Notes	MODEL TECHNICAL VARIATION COOLING CAPACITY DRIVE PACKAGE	RKHL- D 120 L
BLOWER ASSEMBLY GROUP - BELT DRIVE			
64	Stk	Blower Assembly (Includes Items 65-68)	AS-90757-01
65	Stk	Blower Wheel	70-42540-02
66		Bearing Frame Tri-Arm (2)	70-42540-05
67		Bearing with Bearing Lock (2)	70-41854-02
68	Stk	Blower Shaft	70-42540-04
69		Blower Mounting Angles (2)	AE-90708-01
		Blower Angle Stop	AE-90709-02
70		Motor Mount	AS-90824-01
71	Stk	Blower Motor - C/D Voltages	51-42536-01
72	Stk	Variable Sheave	71-42538-02
73	Stk	Belt	71-40438-27
74	Stk	Fixed Sheave	71-100774-02
		Key	94-42551-09
	Stk	Bushing for Sheave w/Screws	71-100773-01

No.	Notes	MODEL TECHNICAL VARIATION COOLING CAPACITY DRIVE PACKAGE	RKHL- D 120 M
BLOWER ASSEMBLY GROUP - BELT DRIVE			
64	Stk	Blower Assembly (Includes Items 65-68)	AS-90757-01
65	Stk	Blower Wheel	70-42540-02
66		Bearing Frame Tri-Arm (2)	70-42540-05
67		Bearing with Bearing Lock (2)	70-41854-02
68	Stk	Blower Shaft	70-42540-04
69		Blower Mounting Angles (2)	AE-90708-01
		Blower Angle Stop	AE-90709-02
70		Motor Mount	AE-90710-04
71	Stk	Blower Motor - C/D Voltages	51-42537-01
72	Stk	Variable Sheave	71-42538-02
73	Stk	Belt	71-40438-23
74	Stk	Fixed Sheave	71-100774-04
		Key	94-42551-09
	Stk	Bushing for Sheave w/Screws	71-100773-01

No.	Notes	MODEL TECHNICAL VARIATION COOLING CAPACITY DRIVE PACKAGE	RKHL- D 180 L
BLOWER ASSEMBLY GROUP - BELT DRIVE			
64	Stk	Blower Assembly - Includes Items 65 and 66	AS-90757-06
65	Stk	Blower Wheel (2)	70-42564-02
66		Bearing Frame Tri-Arm (4)	70-42284-04
67		Bearing with Bearing Lock (4)	70-41854-02
68	Stk	Blower Shaft	70-42564-03
69		Blower Connector Angles (3)	AE-90798-01
70		Motor Mount	AE-90710-03
71	Stk	Blower Motor - C/D Voltages	51-42537-01
72	Stk	Variable Sheave	71-42538-02
73	Stk	Belt	71-40438-43
74a	Stk	Fixed Sheave	71-100774-08
74b		Key	94-42551-09
74c	Stk	Bushing for Sheave w/Screws	71-100773-01

No.	Notes	MODEL TECHNICAL VARIATION COOLING CAPACITY DRIVE PACKAGE	RKHL- D 180 M
BLOWER ASSEMBLY GROUP - BELT DRIVE			
64	Stk	Blower Assembly - Includes Items 65 and 66	AS-90757-06
65	Stk	Blower Wheel (2)	70-42564-02
66		Bearing Frame Tri-Arm (4)	70-42284-04
67		Bearing with Bearing Lock (4)	70-41854-02
68	Stk	Blower Shaft	70-42564-03
69		Blower Connector Angles (3)	AE-90798-01
70		Motor Mount	AE-90710-03
71	Stk	Blower Motor - C/D Voltages	51-102826-06
72	Stk	Variable Sheave	71-40427-04
73	Stk	Belt	71-40438-46
74a	Stk	Fixed Sheave	71-100774-08
74b		Key	94-42551-09
74c	Stk	Bushing for Sheave w/Screws	71-100773-01

No.	Notes	MODEL TECHNICAL VARIATION COOLING CAPACITY	RKHL- D 120
COIL GROUP			
EVAPORATOR COIL GROUP:			
42a	Stk	Evaporator Coil	AS-104522-02
42b	Stk	TXV - Circuit #1	61-42662-15
42c	Stk	TXV - Circuit #2	61-42662-16
42d		Valve Body	61-18542-01
42e		Valve Core	61-18551-01
42f		Valve Cap	83-100635-01
42g		Pressure Transducer	47-103454-01
42h		Bulkhead Valve (4)	61-22369-04
		Locknut - Bulkhead Valve	63-22368-01
42i		Sensor Assembly - Liquid Line	47-103971-01
43	Stk	Drain Pan - Removable	68-102699-02
FILTER PIECES:			
44		Filter Frame	AE-90606-12
45		Air Stop - Bottom	AE-102712-10
46		Air Stop - Side	AE-102712-12
47		Top Air Stop Assembly	AS-90604-06
48		Filter Channel (2)	AE-102712-08
49		Filter Slide (2)	AE-102712-11
50		Filter (6)	54-42541-01
CONDENSER COIL GROUP:			
37a	Stk	Condenser Coil	65-101478-08
37b	Stk	Condenser Coil	65-101478-08
40a		Micro-Channel Coil Mounting Base - Left	68-102752-01
40b		Micro-Channel Coil Mounting Base - Right	68-102752-02
41a		Top Support - Condenser Coil	AE-90612-31
41b		Top Support - Condenser Bulkhead	AE-90612-05
41c		Filter Drier - Liquid Line (2)	83-22755-05
41d		Strap - Filter Drier	AE-102132-01
41e	Stk	High Pressure Control	47-102290-01
41f	Stk	Low Pressure Control (2)	47-101529-09
41g	Stk	High Pressure Control	47-103669-01
HYBRID ASSEMBLY GROUP			
81a		Heat Exchanger	65-103456-03
81b		Bracket - Heat Exchanger	AE-103878-22
81c		EZ Twist Lock Support	64-23207-02
82a	Stk	3 - Way Valve	61-103902-02
82b		Support Bracket - (3-Way Valve)	63-42109-01
82c		Capture Bracket (for 3-Way Valve)	AE-103878-12
83a		Flange Set - Water Pump	38-103141-07
83b	Stk	Water Pump (gaskets for each end - included)	38-103141-26
83c		Bracket - Water Pump	AE-103878-14
84a	Stk	Solenoid Coil	61-103961-07
84b	Stk	Solenoid Valve	61-103961-04
84c		Bracket - Solenoid Valve	AE-103878-17
84d		Capture Bracket (for Solenoid Valve Bracket)	AE-103878-23
85a		Valve Body	61-18542-01
85b		Valve Core	61-18551-01
85c		Valve Cap	83-100635-01
86	Stk	Check Valve (5)	61-103883-02
86a		Distributor (3/8 x 3/8 x 3/8)	83-17467-02
87a	Stk	Water Proving Switch Assembly	AS-104624-01
87b	Stk	Temperature Sensor (2)	47-103971-01
87c	Stk	Water Leak Sensor	62-103612-02
88a	Stk	Air Release Vent	61-103553-02
88b		Tee (1-1/2 x 1/1/2 x 3/4 NPT)	82-21547-04
88c		Copper Reducer (1-5/8 x 1-3/8 inch)	82-103904-01
89a		Wrot Union (2)	81-103937-01
89b		Water Support Plate	AE-103878-30HT
	Stk	Brazing Rods (SILVALOY A56T)	31265
	Stk	Brazing Flux - for SILVALOY A56T	86-25254-09

No.	Notes	MODEL TECHNICAL VARIATION COOLING CAPACITY	RKHL- D 180
COIL GROUP			
EVAPORATOR COIL GROUP:			
40		Air Flow Panel	AS-90828-02H
42	Stk	Complete Coil - Indoor	AS-102821-06
42a	Stk	TXV/Distributor Assembly - Circuit #1	61-102845-01
42b	Stk	TXV/Distributor Assembly - Circuit #2	61-102845-02
42c		Filter Drier - Liquid Line	83-22755-13
42d		Valve Core	61-18551-01
42e		Valve Cap	83-100635-01
42f		Valve Body	61-18542-01
42g		Pressure Transducer	47-103454-01
42h		Sensor Assembly - Liquid Line	47-103971-04
43	Stk	Drain Pan - Removable	68-102699-01
FILTER PIECES:			
44		Filter Frame	AE-90606-10
45		Air Stop - Bottom	AE-102712-17
46		Air Stop - Side	AE-102712-14
47		Top Air Stop Assembly	AS-90604-04
48		Filter Channel (2)	AE-102712-16
49		Filter Slide (2)	AE-102712-15
50		Filter - 20 in. x 25 in. x 2 in. (8)	54-42541-04
CONDENSER COIL:			
37	Stk	Condenser Coil (2)	65-101478-09
37a		Coil Mounting Base - Left	68-102752-01
37b		Coil Mounting Base - Right	68-102752-02
38		Post - Outdoor Coil (Front)	AS-90701-08H
38a		Air Stop - Front	AE-90706-21
39		Post - Outdoor Coil (Rear)	AS-90702-06H
39a		Air Stop - Rear	AE-90706-20
41a		Top Support - Inner Condenser Coil (2)	AE-90612-28
41b		Top Support - Condenser Bulkhead	AE-90612-24
41c		Filter Drier - Liquid Line	83-22755-13
41d		Valve Core	61-18551-01
41e		Valve Cap	83-100635-01
41f	Stk	High Pressure Control (2)	47-103669-01
41g	Stk	Low Pressure Control (2)	47-101529-09
HYBRID ASSEMBLY GROUP			
81a		Heat Exchanger	65-103456-03
81b		Bracket - Heat Exchanger	AE-103878-22
81c		EZ Twist Lock Support	64-23207-02
82a	Stk	3 - Way Valve	61-103902-02
82b		Support Bracket - (3-Way Valve)	63-42109-01
82c		Capture Bracket (for 3-Way Valve)	AE-103878-12
83a		Flange Set - Water Pump	38-103141-07
83b	Stk	Water Pump (gaskets for each end - included)	38-103141-26
83c		Bracket - Water Pump	AE-103878-14
84a	Stk	Solenoid Coil	61-103961-07
84b	Stk	Solenoid Valve	61-103961-04
84c		Bracket - Solenoid Valve	AE-103878-17
84d		Capture Bracket (for Solenoid Valve Bracket)	AE-103878-23
85a		Valve Body	61-18542-01
85b		Valve Core	61-18551-01
85c		Valve Cap	83-100635-01
86	Stk	Check Valve (5)	61-103883-02
86a		Distributor (5/8 x 1/2 x 1/2)	83-41634-01
87a	Stk	Water Proving Switch Assembly	AS-104624-01
87b	Stk	Temperature Sensor (2)	47-103971-03
87c	Stk	Water Leak Sensor	62-103612-02
88a	Stk	Air Release Vent	61-103553-02
88b		Tee (1-1/2 x 1/1/2 x 3/4 NPT)	82-21547-04
88c		Copper Reducer (1-5/8 x 1-3/8 inch)	82-103904-01
89a		Wrot Union (2)	81-103937-01
89b		Water Support Plate	AE-103878-33HT
	Stk	Brazing Rods (SILVALOY A56T)	31265
	Stk	Brazing Flux - for SILVALOY A56T	86-25254-09

No.	Notes	MODEL TECHNICAL VARIATION COOLING CAPACITY ELECTRICAL DESIGNATION	RKHL- D 120 C
COMPRESSOR GROUP			
		Compressor ID:	8588
75	Stk	Compressor (2)	55-102045-83S
	Stk	Plug Harness - Compressor (2)	45-102708-02

No.	Notes	MODEL TECHNICAL VARIATION COOLING CAPACITY ELECTRICAL DESIGNATION	RKHL- D 120 D
COMPRESSOR GROUP			
		Compressor ID:	8589
75	Stk	Compressor (2)	55-102045-84S
	Stk	Plug Harness - Compressor (2)	45-102708-02

No.	Notes	MODEL TECHNICAL VARIATION COOLING CAPACITY ELECTRICAL DESIGNATION	RKHL- D 180 C
COMPRESSOR GROUP			
		Compressor:	8621
75	Stk	Compressor	55-23156-29S
75	Stk	Compressor	55-23156-29S
		Plug Harness - Compressor #1	45-42522-73
		Plug Harness - Compressor #2	45-42522-72

No.	Notes	MODEL TECHNICAL VARIATION COOLING CAPACITY ELECTRICAL DESIGNATION	RKHL- D 180 D
COMPRESSOR GROUP			
		Compressor:	8622
75	Stk	Compressor	55-23156-30S
75	Stk	Compressor	55-23156-30S
		Plug Harness - Compressor #1	45-42522-73
		Plug Harness - Compressor #2	45-42522-72

No.	Notes	MODEL TECHNICAL VARIATION COOLING CAPACITY ELECTRICAL DESIGNATION HEATING CAPACITY	RKHL-	RKHL-	RKHL-	RKHL-
			D 120 C 15	D 120 D 15	D 120 C 22	D 120 D 22
HEAT EXCHANGER, BURNER / MANIFOLD						
98	Stk	Heat Exchanger	AS-90645-01	AS-90645-01	AS-90645-03	AS-90645-03
99		Inducer Mounting Plate Gasket	68-42518-02	68-42518-02	68-42518-02	68-42518-02
100		Turbulators	AE-58922-01 (6)	AE-58922-01 (6)	AE-58922-01 (9)	AE-58922-01 (9)
101		Inducer Mounting Plate	AE-90675-03	AE-90675-03	AE-90675-02	AE-90675-02
102		Inducer Blower Gasket - Before F1418	68-23643-02 (2)	68-23643-02 (2)	68-23643-02 (2)	68-23643-02 (2)
102		Inducer Blower Gasket - On or After F1418	68-23643-03 (2)	68-23643-03 (2)	68-23643-03 (2)	68-23643-03 (2)
103		Burner Support Brackets (2)	AE-90642-02	AE-90642-02	AE-90642-02	AE-90642-02
104		Burner Support	AE-90643-01	AE-90643-01	AE-90643-01	AE-90643-01
105	Stk	Spark Ignitor	62-23556-08	62-23556-08	62-23556-08	62-23556-08
106	Stk	Burner Assembly	AS-90772-01	AS-90772-01	AS-90772-02	AS-90772-02
107		Burner Orifices - Natural Gas	See Orifice Selection Chart			
107		Burner Orifices - LP	See Orifice Selection Chart			
107		Number of Orifices	(6)	(6)	(9)	(9)
108		Square Head Plug	81-23593-01 (4)	81-23593-01 (4)	81-23593-01 (1)	81-23593-01 (1)
109	Stk	Manifold	81-42509-03	81-42509-03	81-42509-02	81-42509-02
110		Gas Valve	See Gas Controls			
111		Street Elbow - 1/2 in. 90 degree	81-40271-04	81-40271-04	N/A	N/A
112	Stk	Flame Sensor	62-23543-02	62-23543-02	62-23543-02	62-23543-02
113a,b	Stk	Pressure Switch (2)	42-24335-25	42-24335-25	42-24335-23	42-24335-23
114		Pressure Switch Mounting Bracket (Single Mount)	AE-90635-05 (2)	AE-90635-05 (2)	AE-90635-05 (2)	AE-90635-05 (2)
115		Heat Shield	AE-90644-02	AE-90644-02	AE-90644-02	AE-90644-02
116	Stk	Limit - Manual Reset (Burner Compartment) (2)	47-22861-01	47-22861-01	47-22861-01	47-22861-01
117	Stk	Induced Draft Blower w/Gasket - Before F1418	70-23641-01 (2)	70-23641-02 (2)	70-23641-01 (2)	70-23641-02 (2)
117	Stk	Induced Draft Blower w/Gasket - On or After F1418	70-23641-06 (2)	70-23641-02 (2)	70-23641-06 (2)	70-23641-02 (2)
118		Flue Duct (2)	75-23678-01	75-23678-01	75-23678-01	75-23678-01
		Gasket - Flue Duct - Before F1418	68-23680-04 (4)	68-23680-04 (4)	68-23680-04 (4)	68-23680-04 (4)
		Gasket - Flue Duct - On or After F1418	68-23680-06 (2)	68-23680-06 (2)	68-23680-06 (2)	68-23680-06 (2)
	Stk	Limit - Main Limit (Heat Exchanger Panel)	47-25349-09	47-25349-09	47-25349-02	47-25349-02

No.	Notes	MODEL TECHNICAL VARIATION COOLING CAPACITY ELECTRICAL DESIGNATION HEATING CAPACITY	RKHL-	RKHL-	RKHL-	RKHL-
			D 180 C 25	D 180 D 25	D 180 C 35	D 180 D 35
HEAT EXCHANGER, BURNER / MANIFOLD						
98	Stk	Heat Exchanger	AS-90645-12	AS-90645-12	AS-90645-15	AS-90645-15
99		Inducer Mounting Plate Gasket	68-42518-03	68-42518-03	68-42518-03	68-42518-03
100		Turbulators	AE-58922-02 (10)	AE-58922-02 (10)	AE-58922-02 (14)	AE-58922-02 (14)
101		Inducer Mounting Plate	AE-90675-08	AE-90675-08	AE-90675-06	AE-90675-06
102		Inducer Blower Gasket - Before F1418	68-23643-02 (2)	68-23643-02 (2)	68-23643-02 (3)	68-23643-02 (3)
102		Inducer Blower Gasket - On or After F1418	68-23643-03 (2)	68-23643-03 (2)	68-23643-03 (3)	68-23643-03 (3)
103		Burner Support Brackets (2)	AE-90642-02	AE-90642-02	AE-90642-02	AE-90642-02
104		Burner Support	AS-90830-01	AS-90830-01	AS-90830-01	AS-90830-01
105	Stk	Spark Ignitor	62-23556-10	62-23556-10	62-23556-10	62-23556-10
106	Stk	Burner Assembly	AS-90641-29	AS-90641-29	AS-90641-30	AS-90641-30
107		Burner Orifices - Natural Gas	See Orifice Selection Chart			
107		Burner Orifices - LP	See Orifice Selection Chart			
107		Number of Orifices	(10)	(10)	(14)	(14)
108		Square Head Plug	81-23593-01 (3)	81-23593-01 (3)	81-23593-01 (1)	81-23593-01 (1)
109	Stk	Manifold	81-42509-07	81-42509-07	81-42509-04	81-42509-04
110		Gas Valve	See Gas Controls			
111		Street Elbow - 3/4 in. 90 degree	81-40271-05	81-40271-05	81-40271-05	81-40271-05
		Nipple - 3/4 in. x 2-1/2 in.	81-40383-04	81-40383-04	81-40383-04	81-40383-04
		Standard Elbow - 3/4 in.	81-40394-05	81-40394-05	N/A	N/A
		Standard Elbow - 1 in. x 3/4 in. 90 degree	N/A	N/A	81-40394-24	81-40394-24
112	Stk	Flame Sensor	62-23543-02	62-23543-02	62-23543-02	62-23543-02
113A	Stk	Pressure Switch - High	42-24335-23 (1)	42-24335-23 (1)	42-24335-23 (1)	42-24335-23 (1)
113B	Stk	Pressure Switch - Low	42-24335-24 (1)	42-24335-24 (1)	42-24335-24 (2)	42-24335-24 (2)
114A		Pressure Switch Mounting Bracket (Single Mount)	AE-90635-05 (1)	AE-90635-05 (1)	AE-90635-05 (2)	AE-90635-05 (2)
114B		Pressure Switch Mounting Bracket (Dual Mount)	AE-90635-04	AE-90635-04	AE-90635-04	AE-90635-04
115		Heat Shield	AE-90644-03	AE-90644-03	AE-90644-03	AE-90644-03
116	Stk	Limit - Manual Reset (Burner Compartment) (4)	47-22861-01	47-22861-01	47-22861-01	47-22861-01
117	Stk	Induced Draft Blower w/Gasket - Before F1418	70-23641-01 (2)	70-23641-02 (2)	70-23641-01 (3)	70-23641-02 (3)
117	Stk	Induced Draft Blower w/Gasket - On or After F1418	70-23641-06 (2)	70-23641-02 (2)	70-23641-06 (3)	70-23641-02 (3)
118		Flue Duct	75-23678-01 (2)	75-23678-01 (2)	75-23678-01 (3)	75-23678-01 (3)
		Gasket - Flue Duct - Before F1418	68-23680-04 (4)	68-23680-04 (4)	68-23680-04 (6)	68-23680-04 (6)
		Gasket - Flue Duct - On or After F1418	68-23680-06 (2)	68-23680-06 (2)	68-23680-06 (3)	68-23680-06 (3)
	Stk	Limit - Main Limit (Heat Exchanger Panel)	47-25349-09	47-25349-09	47-25349-03	47-25349-03

No.	Notes	MODEL TECHNICAL VARIATION GAS CODE	RKHL- D 2P	RKHL- D 2Q
GAS CONTROLS				
110	Stk	Gas Valve - Natural Gas	60-101778-01	60-102405-01
110	Stk	Gas Valve - LP	See Note 2	See Note 1
61c	Stk	Integrated Furnace Control Board (IFC)	62-102860-02	62-102860-02
111		Street Elbow	See Heat Exchanger Group	
	Stk	LP Conversion Kit	FP-14	FP-24

No.	Notes	MODEL TECHNICAL VARIATION COOLING CAPACITY	RKHL- D 120
ACCESSORIES			
		Louver Panel - Option	AXRX-AAD03A
		Carbon Dioxide Sensor	RXRX-AR02
		Dual Enthalpy Kit	RXRX-AV03
		Manual Fresh Air Damper (Return Panel)	AXRF-JDA1
		Manual Fresh Air Damper (Left Panel Mounted)	AXRF-KDA1
		Motor Kit for AXRF-KDA1	RXRX-AW02
		Modulating Motor Kit w/position feedback for RXRF-KDA1	RXRX-AW04
		Motorized Fresh Air Damper (Horizontal Return Mounted)	AXRF-JDB1
		Comfort Alert (1 Per Compressor)	RXRX-AZ01
		BACnet Communication Card	RXRX-AY01
		LonWorks Communication Card	RXRX-AY02
		Convenience Outlet - Option	RXRX-AN01
		Unfused Service Disconnect	RXRX-AP01
		Low Ambient Control Kit (1 Per Compressor)	RXRZ-C02

No.	Notes	MODEL TECHNICAL VARIATION COOLING CAPACITY	RKHL- D 120
ECONOMIZERS			
		Economizer - Single Enthalpy	AXRD-PJCM3
		Economizer - Single Enthalpy w/Smoke Detector	AXRD-SJCM3

No.	Notes	MODEL TECHNICAL VARIATION COOLING CAPACITY	RKHL- D 120
POWER EXHAUST			
		Power Exhaust - 208/230 volt	RXRX-BFF02C
		Power Exhaust - 460 volt	RXRX-BFF02D

No.	Notes	MODEL TECHNICAL VARIATION COOLING CAPACITY	RKHL- D 180
ACCESSORIES			
		Louver Panel - Option	AXRX-AAD01K
		Carbon Dioxide Sensor (Wall Mount)	RXRX-AR02
		Dual Enthalpy Kit	RXRX-AV03
		Manual Fresh Air Damper	AXRF-KFA1
		Motorized Kit for Manual Fresh Air Damper	RXRX-AW03
		Modulating Motor Kit w/position feedback for AXRF-KFA1	RXRX-AW05
		Unwired Convenience Outlet	RXRX-AN01
		Unfused Service Disconnect	RXRX-AP01
		Low Ambient Control Kit (One per Compressor)	RXRZ-C02
		Comfort Alert (One per Compressor)	RXRX-AZ01
		BACnet Communication Card	RXRX-AY01
		LonWorks Communication Card	RXRX-AY02

No.	Notes	MODEL TECHNICAL VARIATION COOLING CAPACITY	RKHL- D 180
ECONOMIZERS			
		Downflow Economizer - Single Enthalpy (DDC)	AXRD-PMCM3
		Downflow Economizer - Single Enthalpy w/Smoke Detector (DDC)	AXRD-SMCM3

No.	Notes	MODEL TECHNICAL VARIATION COOLING CAPACITY	RKHL- D 180
POWER EXHAUST			
		Power Exhaust (208/230V)	RXRX-BGF05C
		Power Exhaust (460V)	RXRX-BGF05D

PACKAGE EQUIPMENT - ORIFICE SELECTION CHART - NATURAL GAS

CAUTION: Selection of the correct Natural Gas Orifice requires the following information for the specific installation:

- 1) Furnace Input Rating (BTU/HR)
- 2) Number of Burners
- 2) Altitude (ft.)

For detailed information and instructions for Orifice selection, see the Gas Furnace LP Conversion Kit Index 92-21519-47 and the latest edition of the National Fuel Gas Code Handbook, or the National Standard of Canada, Natural Gas and Propane Installation Code, CAN B149.1.

CAUTION: This information is provided for replacement purposes only. Conversion for operation at High Altitude must be done using the kit specified on the product specification sheet for the unit.

NOTE: This Orifice sizing chart is based on a Natural Gas heating value of 1075 BTU/cu. ft and a pressure setting of 3.5 in. water column.

NOTE: Factory installed orifices are calculated and sized based on a Natural Gas heating value of 1075 BTU/cu. ft. and an elevation of 0 - 2000 ft.

Furnace Input Rating (BTU/HR)	Canadian High Altitude Derated Input (BTU/HR)	Number of Burners	Elevation (ft.)					
			Country					
			0 - 2000 U.S.	2001 - 4000 U.S.	4001 - 6000 U.S.	8000+ U.S.	0 - 2000 Canada	2001 - 4500 Canada
40,000	36,000	2	62-22175-45	62-22175-47	62-22175-48	62-22175-49	62-22175-45	62-22175-15
60,000	54,000	3	62-22175-45	62-22175-47	62-22175-48	62-22175-49	62-22175-45	62-22175-15
72,000	N/A	4	62-22175-15	62-22175-49	62-22175-50	62-22175-51	62-22175-15	N/A
80,000	72,000	4	62-22175-45	62-22175-47	62-22175-48	62-22175-49	62-22175-45	62-22175-15
90,000	N/A	5	62-22175-15	62-22175-49	62-22175-50	62-22175-51	62-22175-15	N/A
100,000	90,000	5	62-22175-45	62-22175-47	62-22175-48	62-22175-49	62-22175-45	62-22175-15
120,000	108,000	6	62-22175-45	62-22175-47	62-22175-48	62-22175-49	62-22175-45	62-22175-15
135,000	121,500	6	62-22175-44	62-22175-45	62-22175-47	62-22175-48	62-22175-44	62-22175-45
150,000	135,000	6	62-22175-42	62-22175-43	62-22175-44	62-22175-45	62-22175-42	62-22175-44
180,000	N/A	9	62-22175-45	62-22175-47	62-22175-48	62-22175-49	62-22175-45	N/A
210,000	N/A	9	62-22175-43	62-22175-44	62-22175-45	62-22175-47	62-22175-43	N/A
210,000	N/A	10	62-22175-45	62-22175-47	62-22175-48	62-22175-49	62-22175-45	N/A
225,000	202,500	9	62-22175-42	62-22175-43	62-22175-44	62-22175-45	62-22175-42	62-22175-44
250,000	225,000	10	62-22175-42	62-22175-43	62-22175-44	62-22175-45	62-22175-42	62-22175-44
252,000	225,000	9	62-22175-40	62-22175-42	62-22175-43	62-22175-44	62-22175-40	62-22175-42
252,000	N/A	12	62-22175-45	62-22175-47	62-22175-48	62-22175-49	62-22175-45	N/A
290,000	N/A	14	62-22175-45	62-22175-47	62-22175-48	62-22175-49	62-22175-45	N/A
300,000	270,000	12	62-22175-42	62-22175-43	62-22175-44	62-22175-45	62-22175-42	62-22175-44
330,000	N/A	14	62-22175-43	62-22175-44	62-22175-45	62-22175-47	62-22175-43	N/A
350,000	315,000	14	62-22175-42	62-22175-43	62-22175-44	62-22175-45	62-22175-42	62-22175-44
400,000	360,000	14	62-22175-40	62-22175-42	62-22175-43	62-22175-44	62-22175-40	62-22175-42

PACKAGE EQUIPMENT - ORIFICE SELECTION CHART - LP

CAUTION: Selection of the correct LP Orifice requires the following information for the specific installation:

- 1) Furnace Input Rating (BTU/HR)
- 2) Number of Burners
- 2) Altitude (ft.)

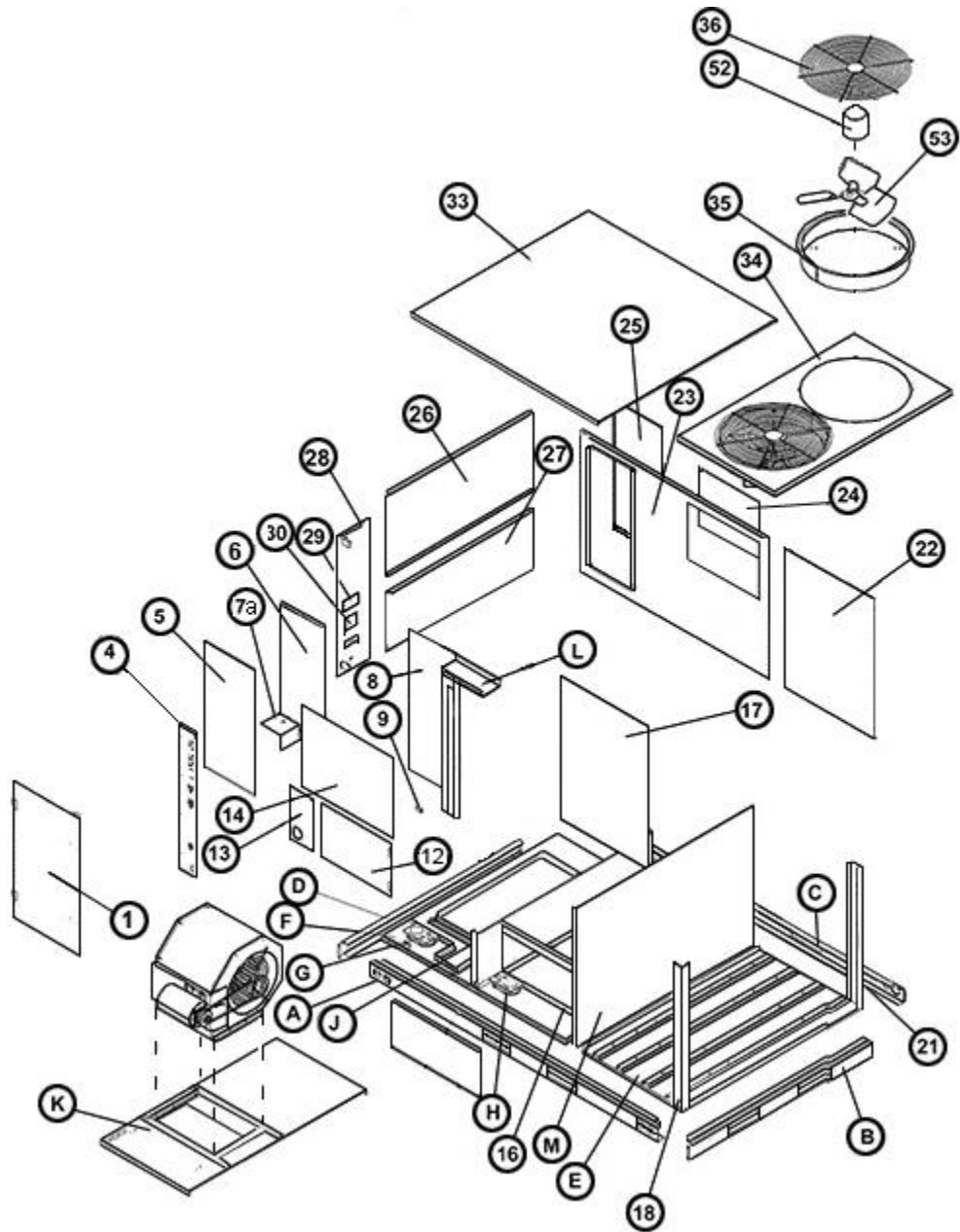
For detailed information and instructions for Orifice selection, see the Gas Furnace LP Conversion Kit Index 92-21519-47 and the latest edition of the National Fuel Gas Code Handbook, or the National Standard of Canada, Natural Gas and Propane Installation Code, CAN B149.1.

CAUTION: This information is provided for replacement purposes only. Conversion to LP or for operation at High Altitude should be done using the kit(s) specified on the product specification sheet for the unit.

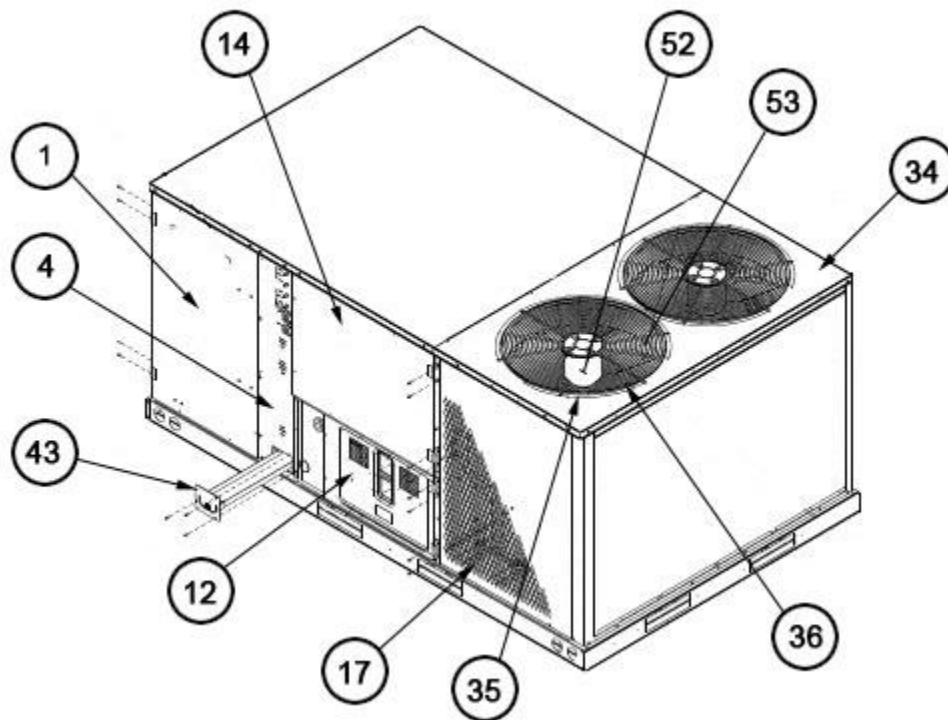
NOTE: This Orifice sizing chart is developed using the specified pressure setting of 10 in. water column instead of the 11.0 in water column used by the NFG and CANB149.1.

NOTE: Orifices supplied in the LP Conversion Kit are calculated and sized based on a heating value of 2500 BTU/cu. ft. and an elevation of 0 - 2000 ft.

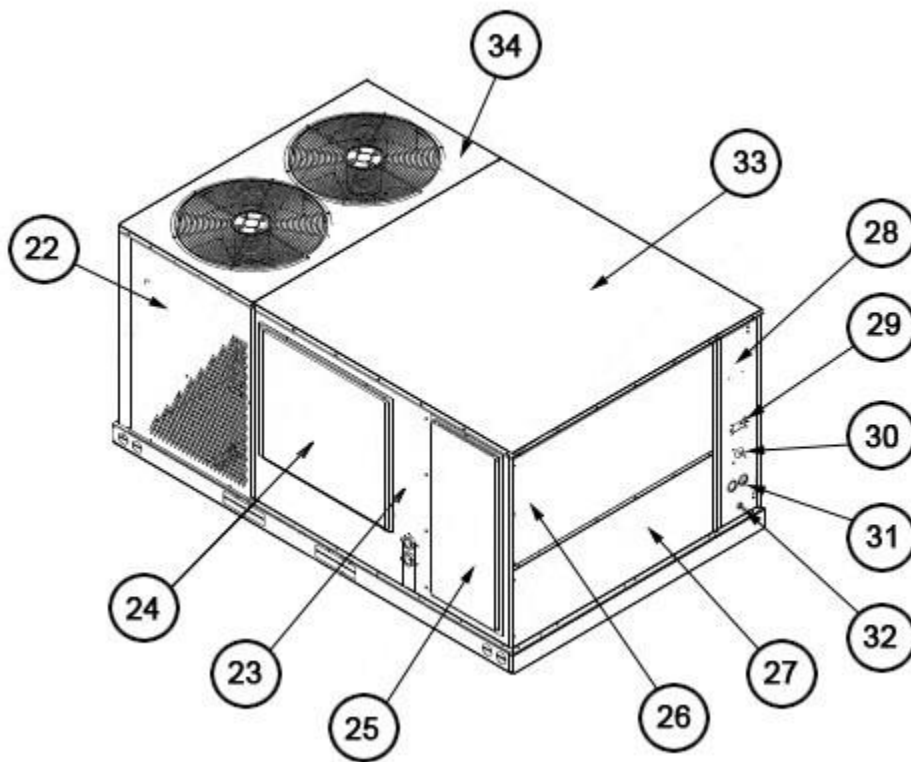
Furnace Input Rating (BTU/HR)	Canadian High Altitude Derated Input (BTU/HR)	Number of Burners	Elevation (ft.)					
			Country					
			0 - 2000 U.S.	2001 - 4000 U.S.	4001 - 6000 U.S.	8000+ U.S.	0 - 2000 Canada	2001 - 4500 Canada
40,000	36,000	2	62-22175-55	62-22175-55	62-22175-56	62-22175-56	62-22175-55	62-22175-13
60,000	54,000	3	62-22175-55	62-22175-55	62-22175-56	62-22175-56	62-22175-55	62-22175-13
72,000	N/A	4	62-22175-13	62-22175-57	62-22175-57	62-22175-59	62-22175-13	N/A
80,000	72,000	4	62-22175-55	62-22175-55	62-22175-56	62-22175-56	62-22175-55	62-22175-13
90,000	N/A	5	62-22175-13	62-22175-57	62-22175-57	62-22175-59	62-22175-13	N/A
100,000	90,000	5	62-22175-55	62-22175-55	62-22175-56	62-22175-56	62-22175-55	62-22175-13
120,000	108,000	6	62-22175-55	62-22175-55	62-22175-56	62-22175-56	62-22175-55	62-22175-13
135,000	121,500	6	62-22175-54	62-22175-55	62-22175-55	62-22175-56	62-22175-54	62-22175-55
150,000	135,000	6	62-22175-54	62-22175-55	62-22175-55	62-22175-56	62-22175-54	62-22175-54
180,000	N/A	9	62-22175-55	62-22175-55	62-22175-56	62-22175-56	62-22175-55	N/A
210,000	N/A	9	62-22175-54	62-22175-55	62-22175-55	62-22175-56	62-22175-54	N/A
210,000	N/A	10	62-22175-55	62-22175-55	62-22175-56	62-22175-56	62-22175-55	N/A
225,000	202,500	9	62-22175-54	62-22175-55	62-22175-55	62-22175-56	62-22175-54	62-22175-54
250,000	225,000	10	62-22175-54	62-22175-55	62-22175-55	62-22175-56	62-22175-54	62-22175-54
252,000	225,000	9	62-22175-53	62-22175-54	62-22175-54	62-22175-55	62-22175-53	62-22175-54
252,000	N/A	12	62-22175-55	62-22175-55	62-22175-56	62-22175-56	62-22175-55	N/A
290,000	N/A	14	62-22175-55	62-22175-55	62-22175-56	62-22175-56	62-22175-55	N/A
300,000	270,000	12	62-22175-54	62-22175-55	62-22175-55	62-22175-56	62-22175-54	62-22175-54
330,000	N/A	14	62-22175-54	62-22175-55	62-22175-55	62-22175-56	62-22175-54	N/A
350,000	315,000	14	62-22175-54	62-22175-55	62-22175-55	62-22175-56	62-22175-54	62-22175-54
400,000	360,000	14	62-22175-53	62-22175-54	62-22175-54	62-22175-55	62-22175-53	62-22175-54



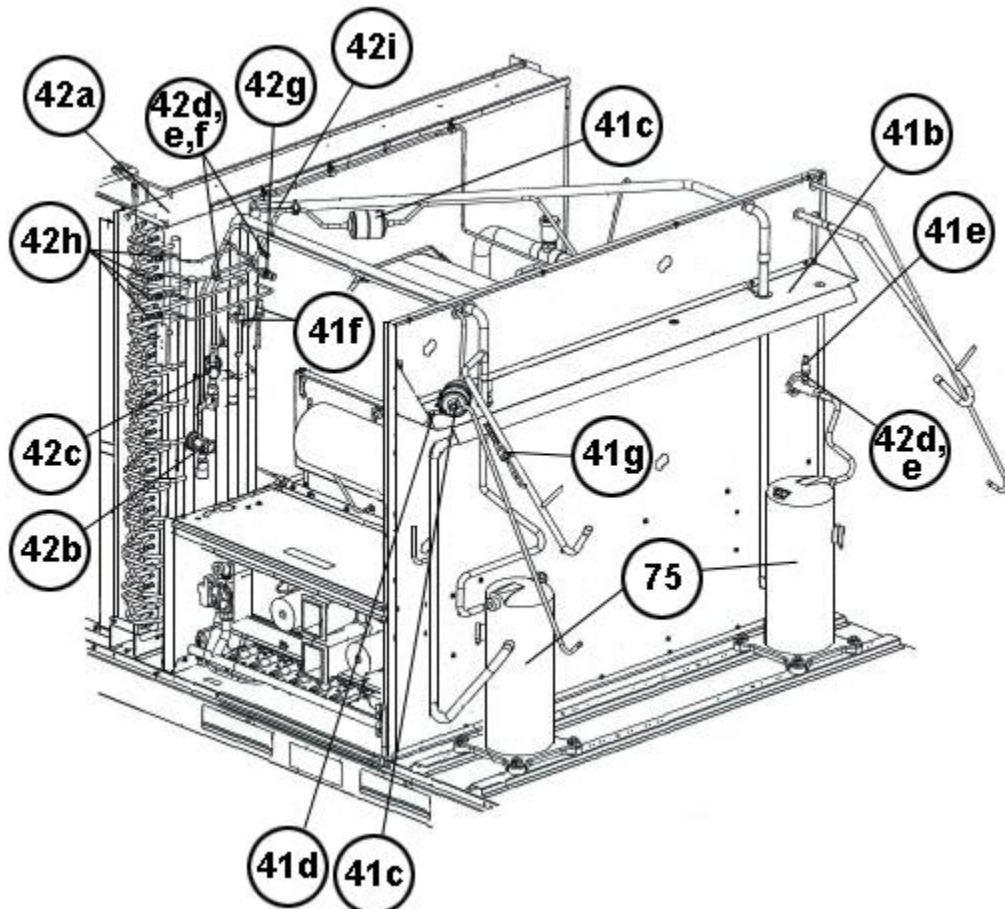
Exploded View 120



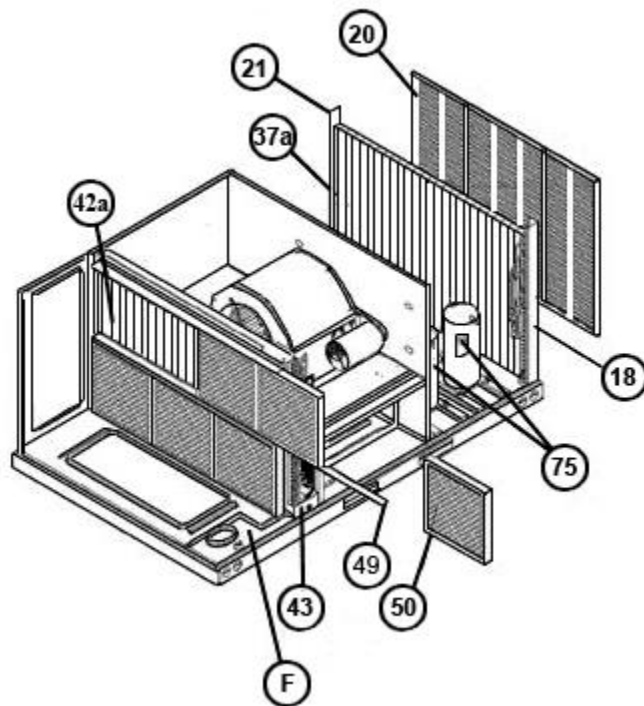
Exterior - Front 120



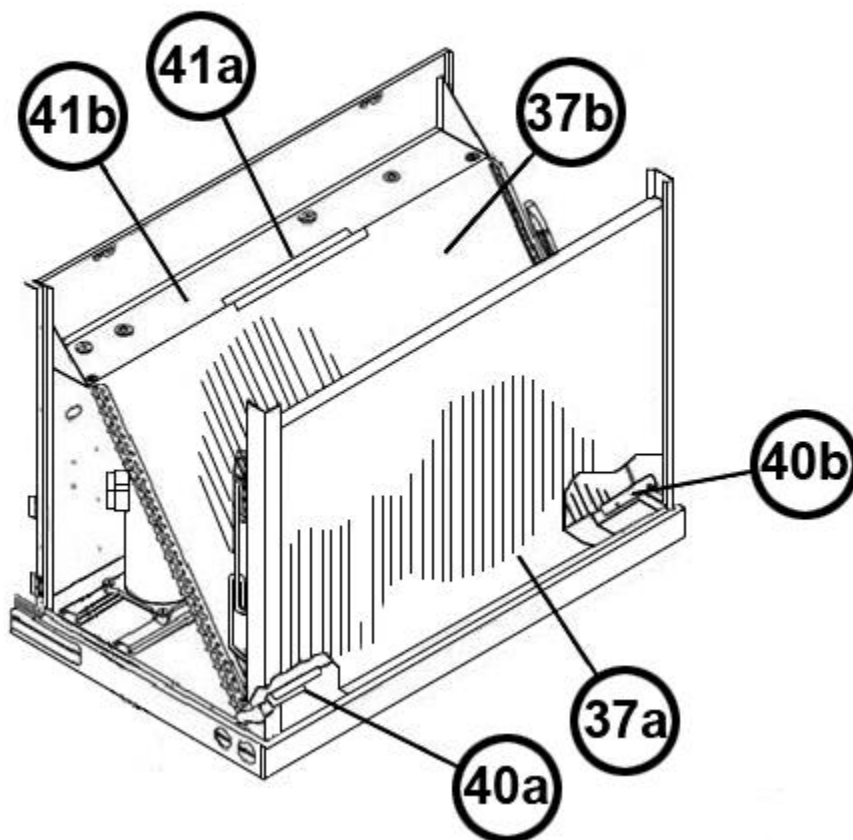
Exterior - Back 120



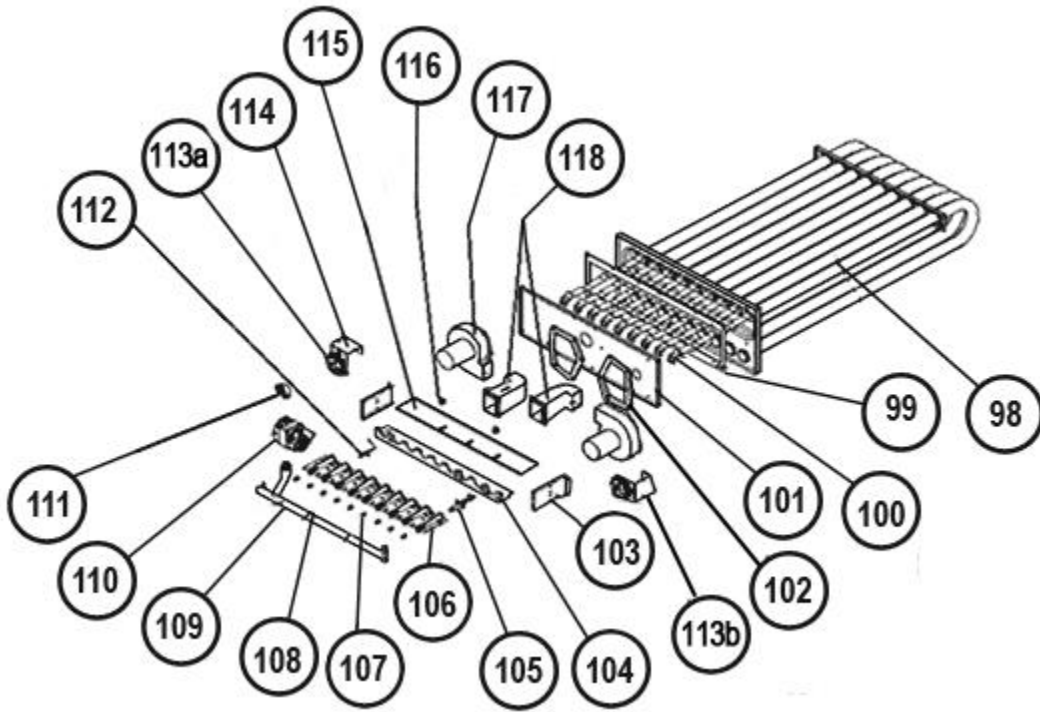
Interior - Front 120



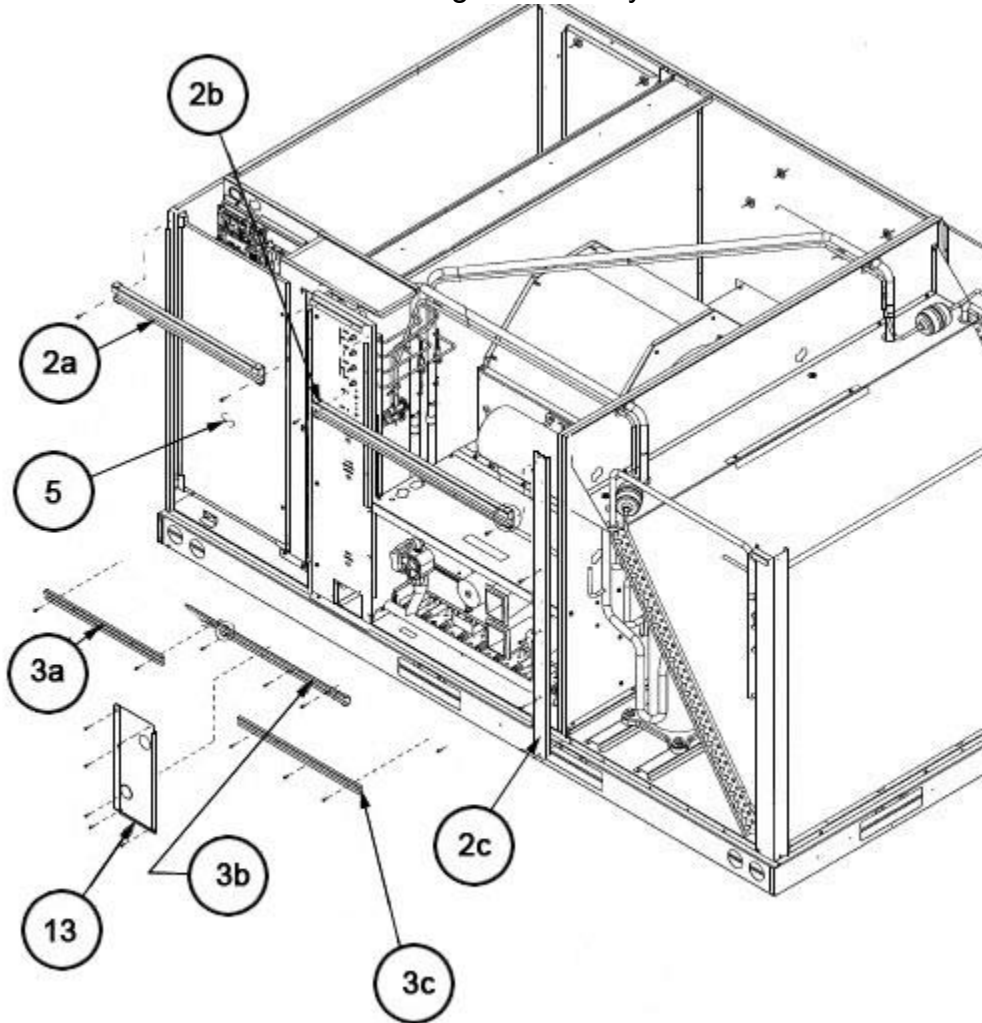
Filter-Coil Assembly 120



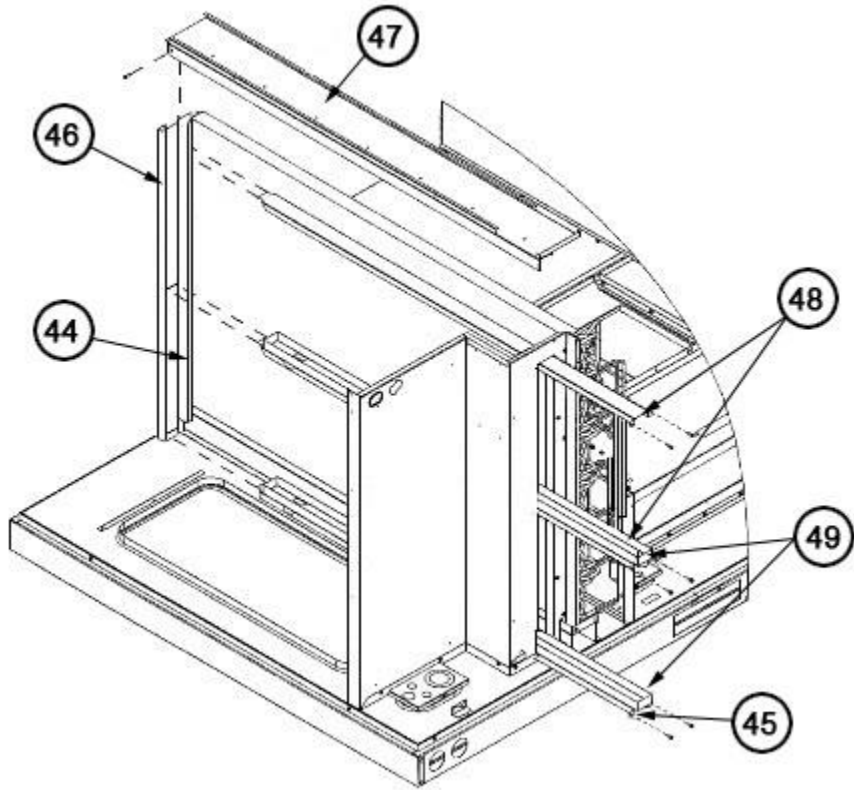
Condenser Coil Assembly 120



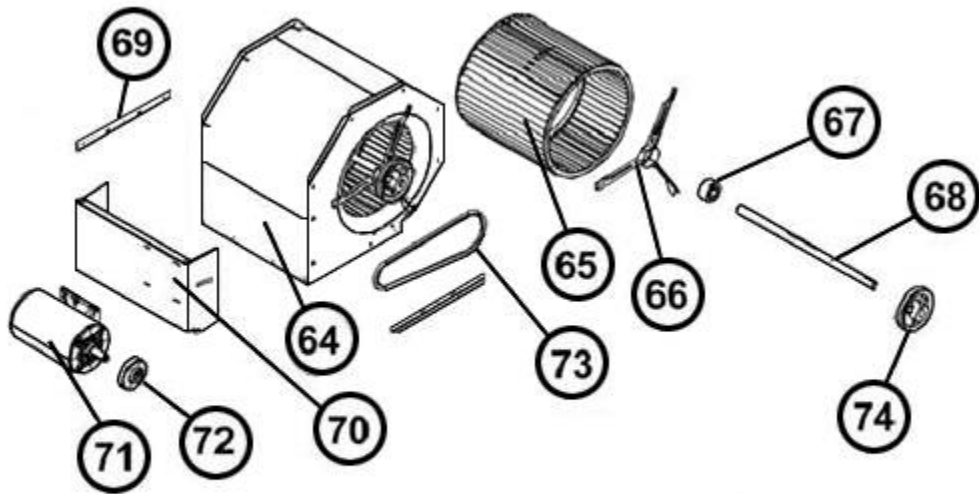
Heat Exchanger Assembly 120



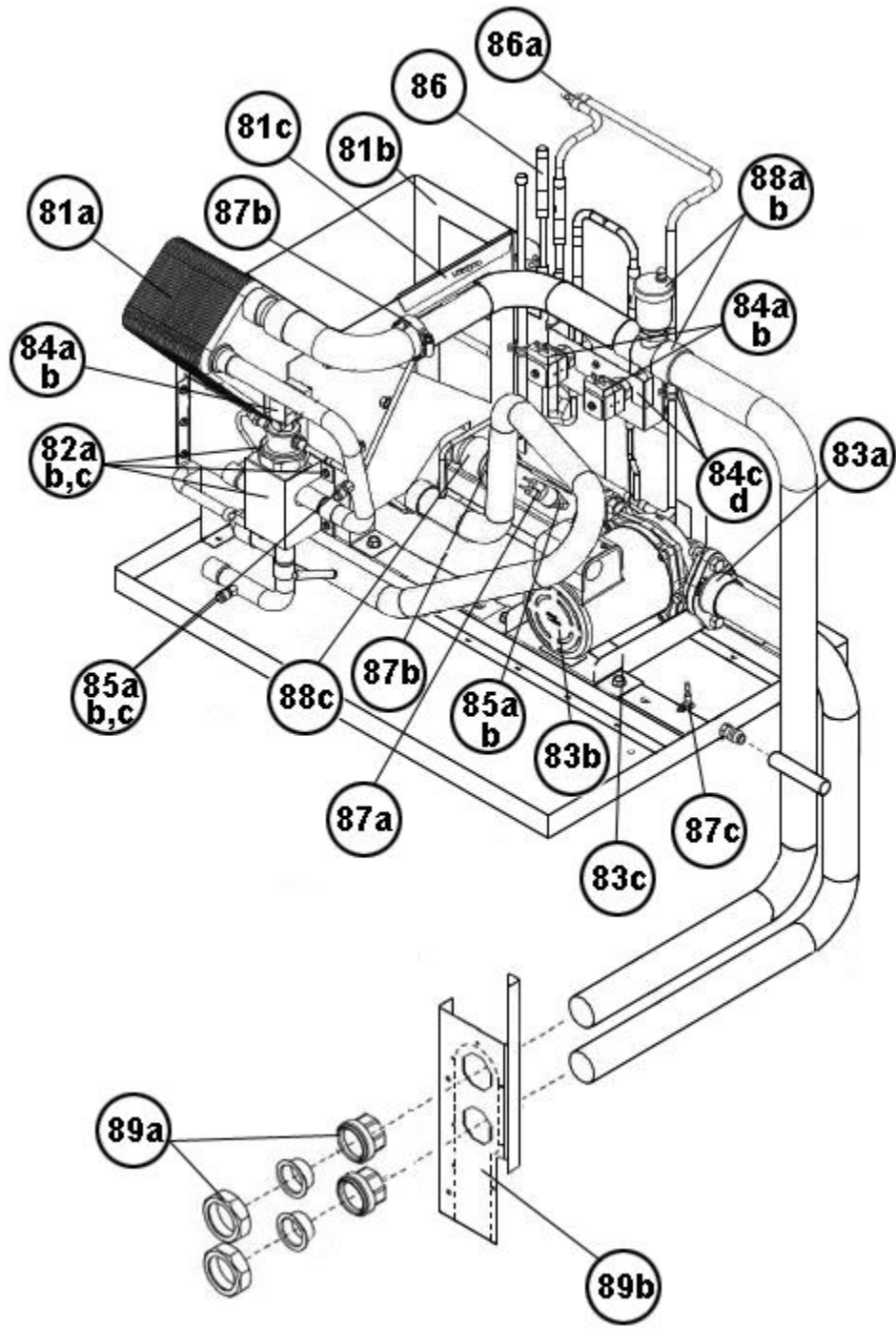
Front Panel Brackets 120



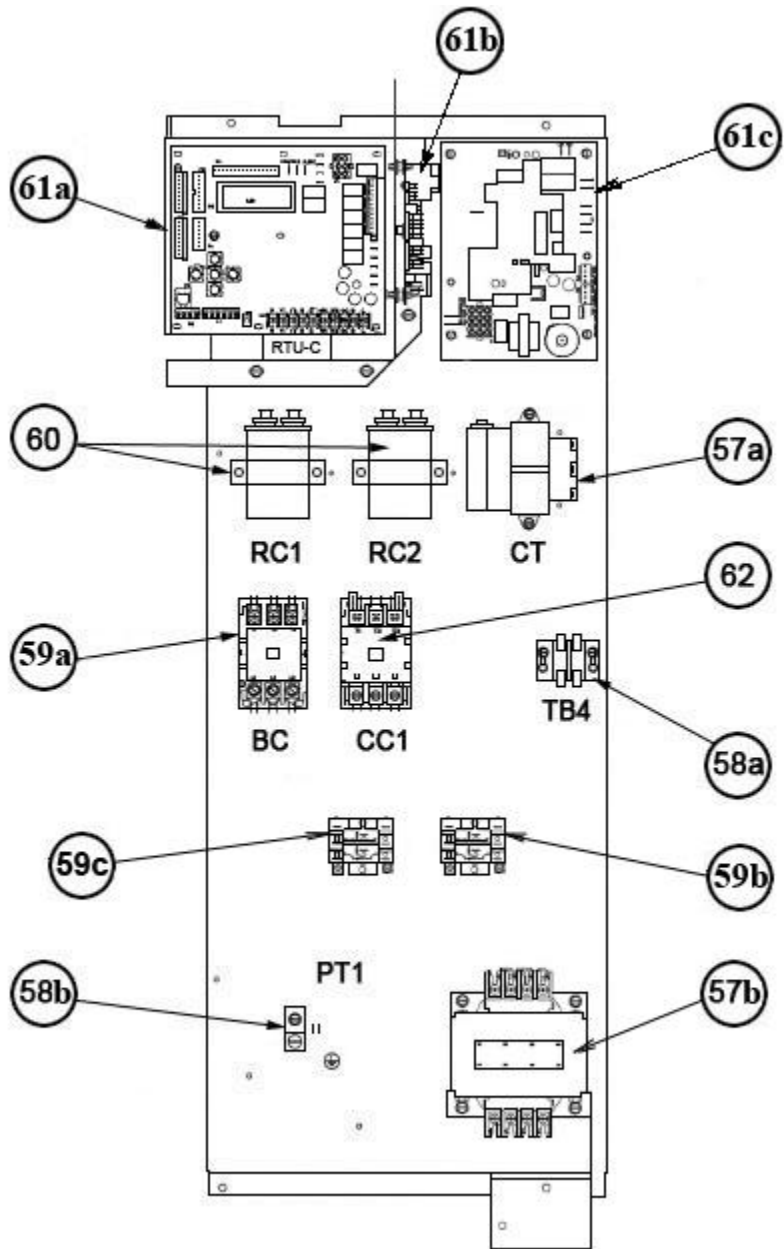
Filter Frame Assembly 120



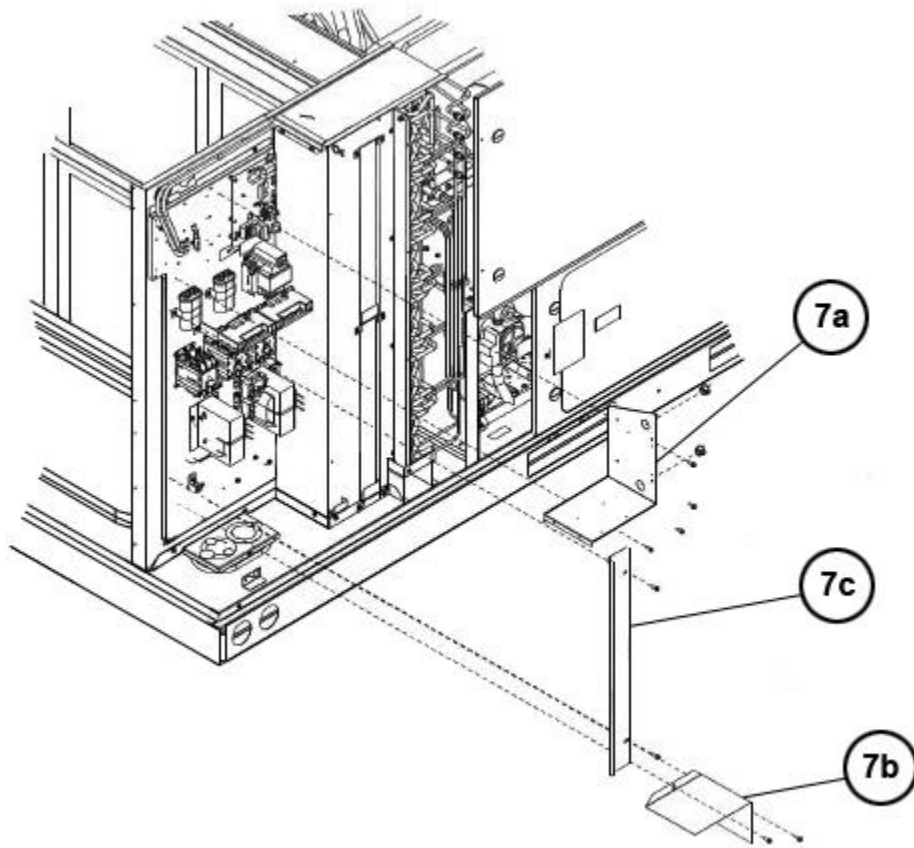
Blower Assembly 120



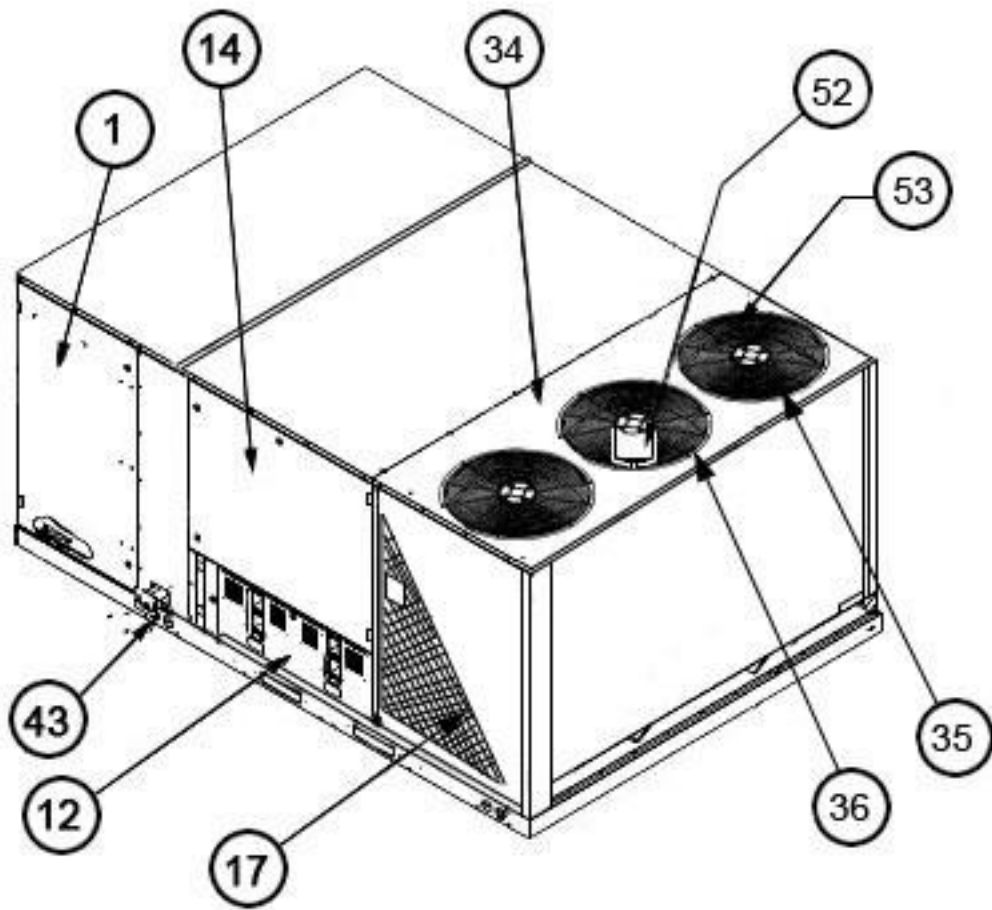
Hybrid Assembly 120



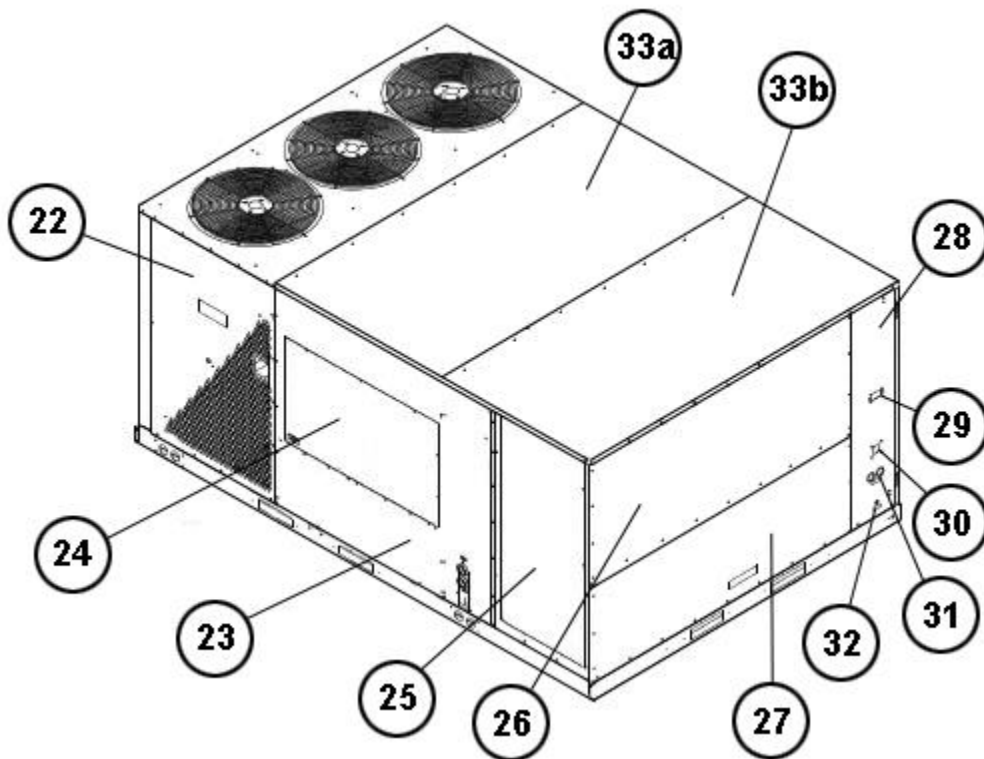
Control Box 120



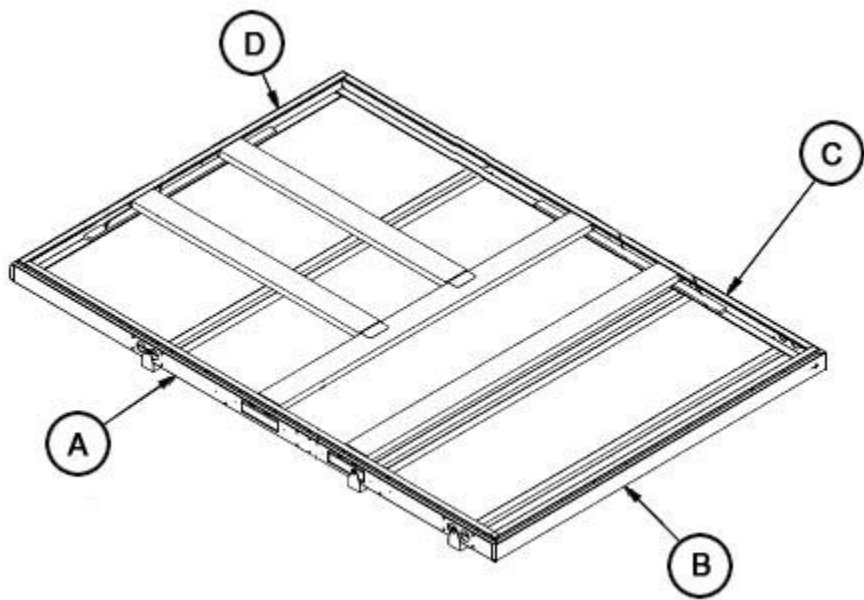
Low Voltage Shields 120



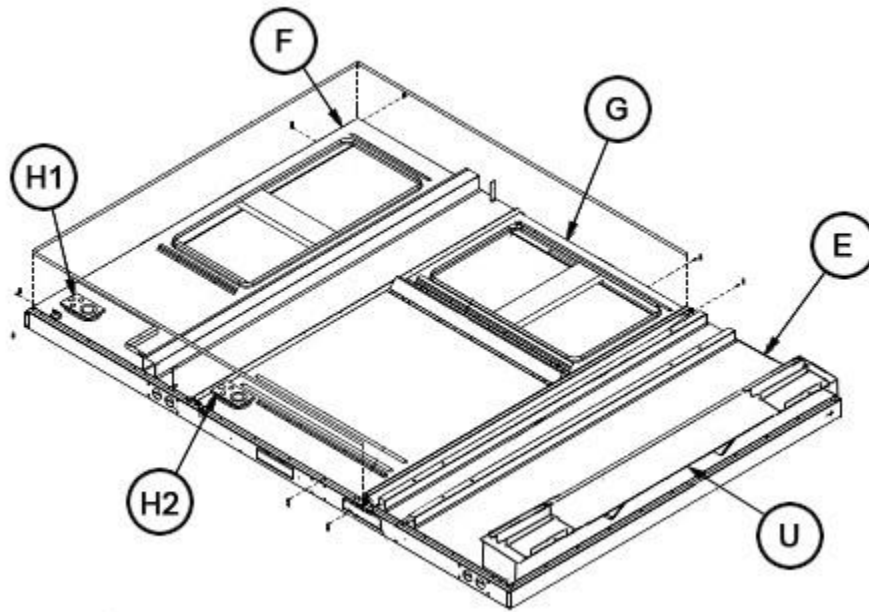
Exterior - Front 180



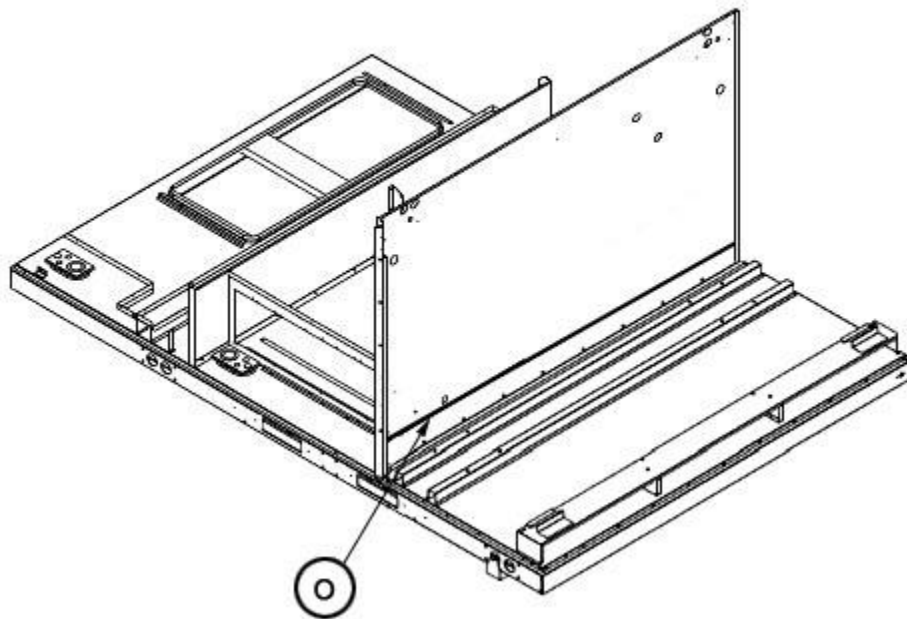
Exterior - Back 180



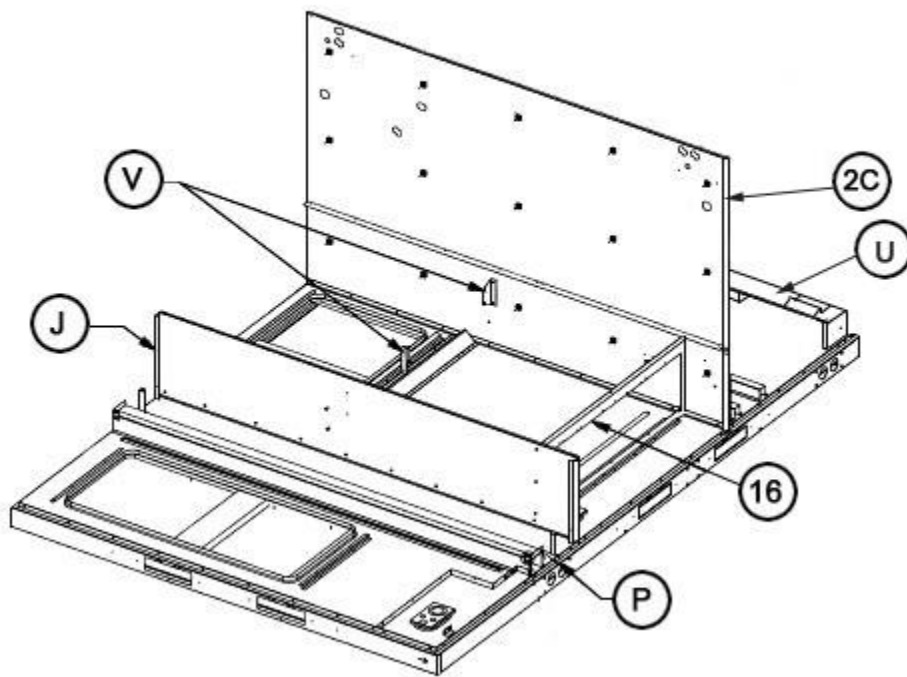
Base Rail Assembly 180



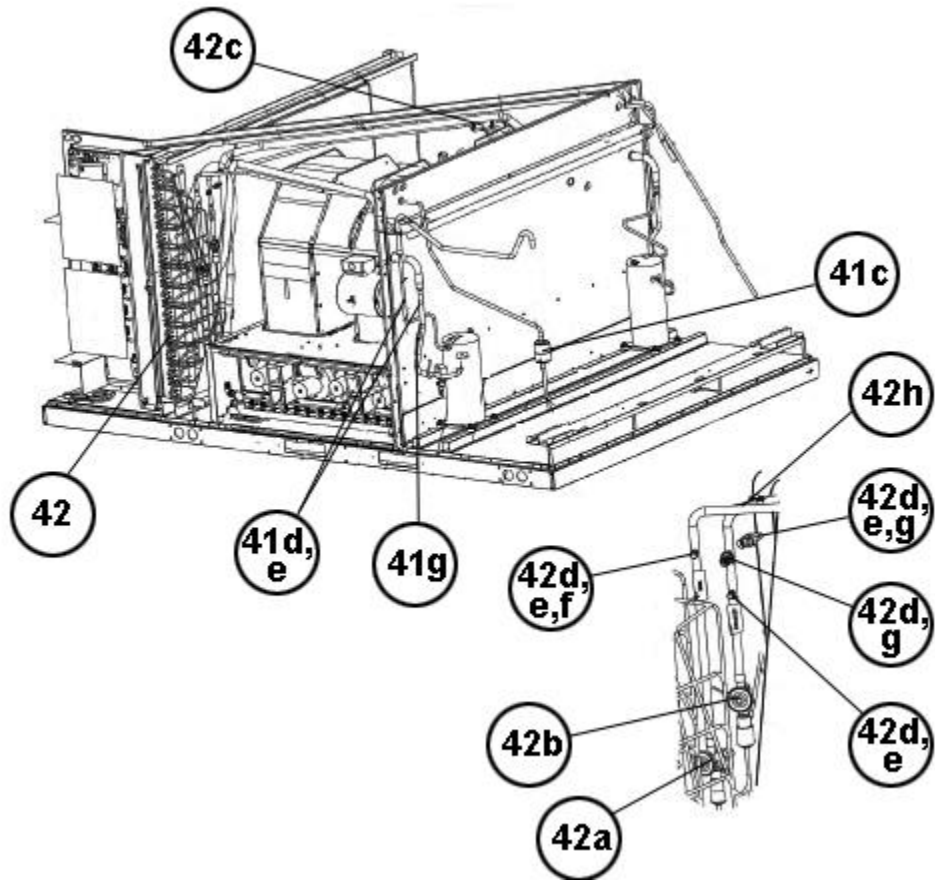
Base Pan Assembly 180



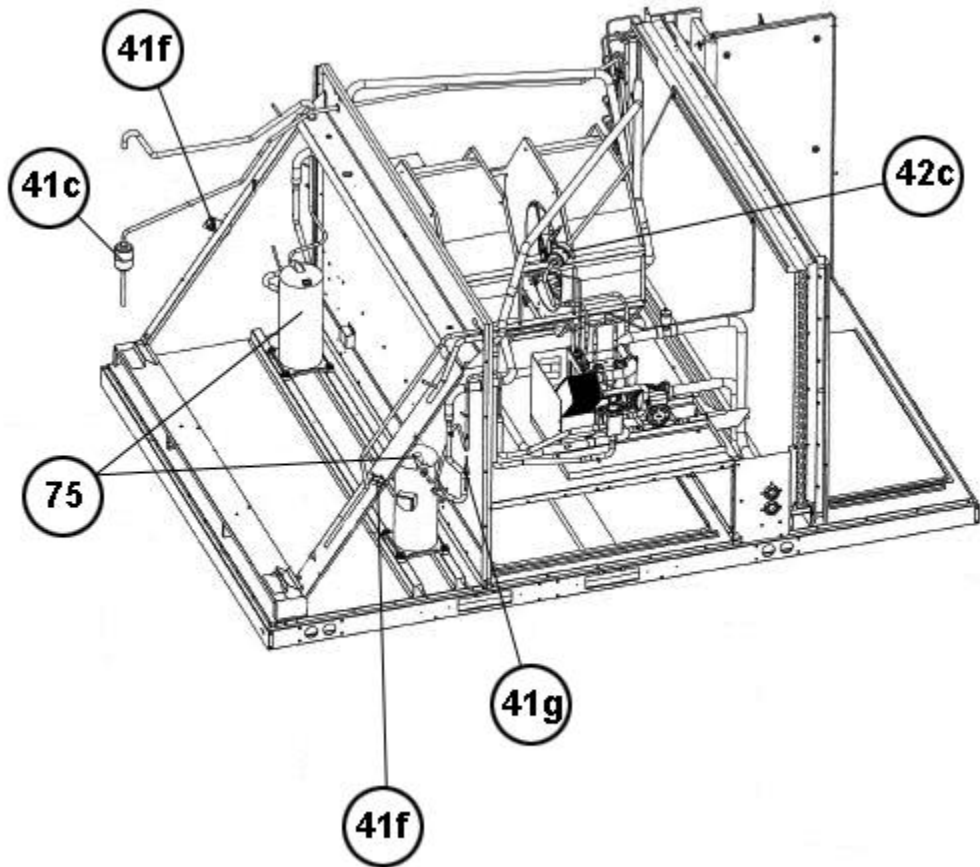
Condenser Bulkhead 180



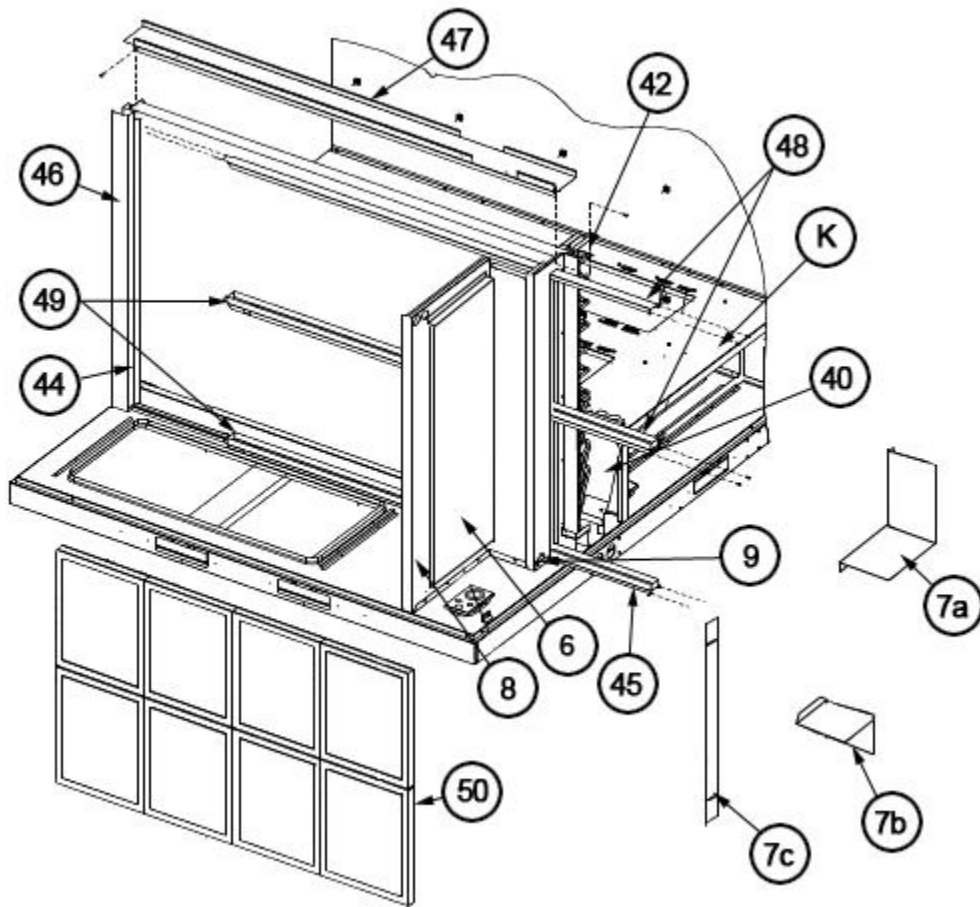
Heat Compartment 180



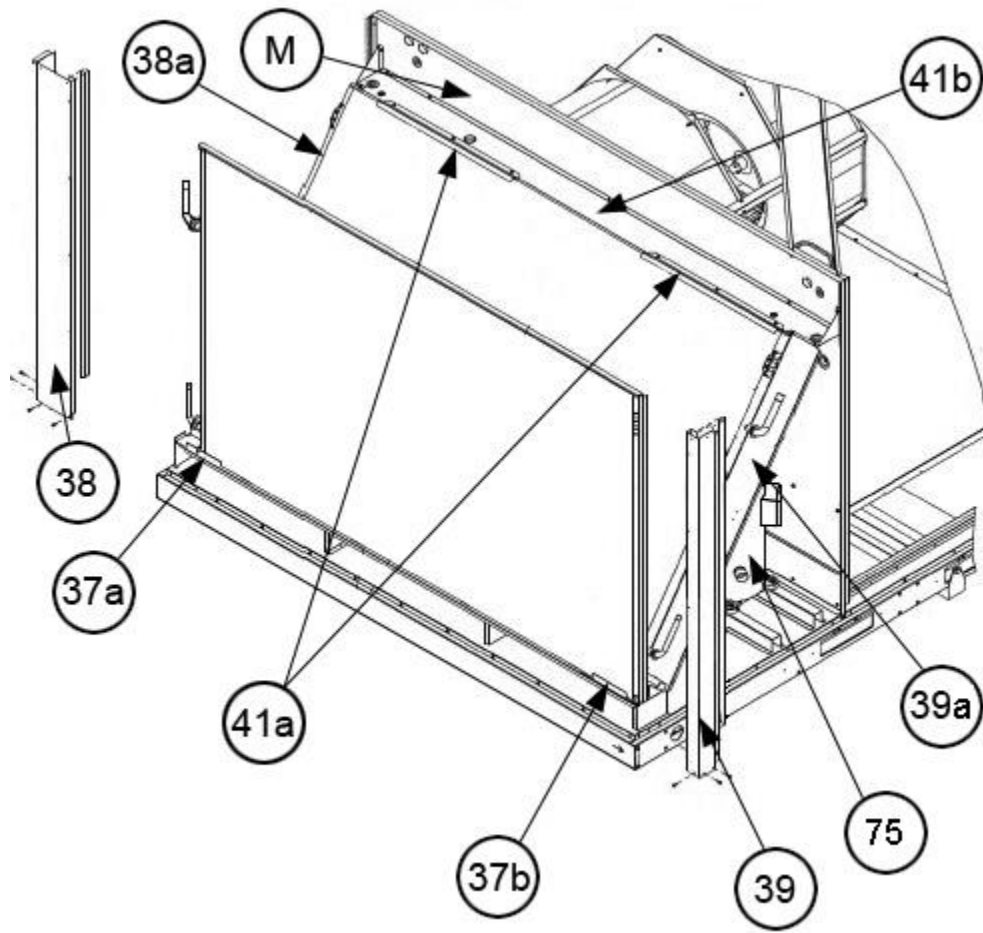
Interior - Front 180



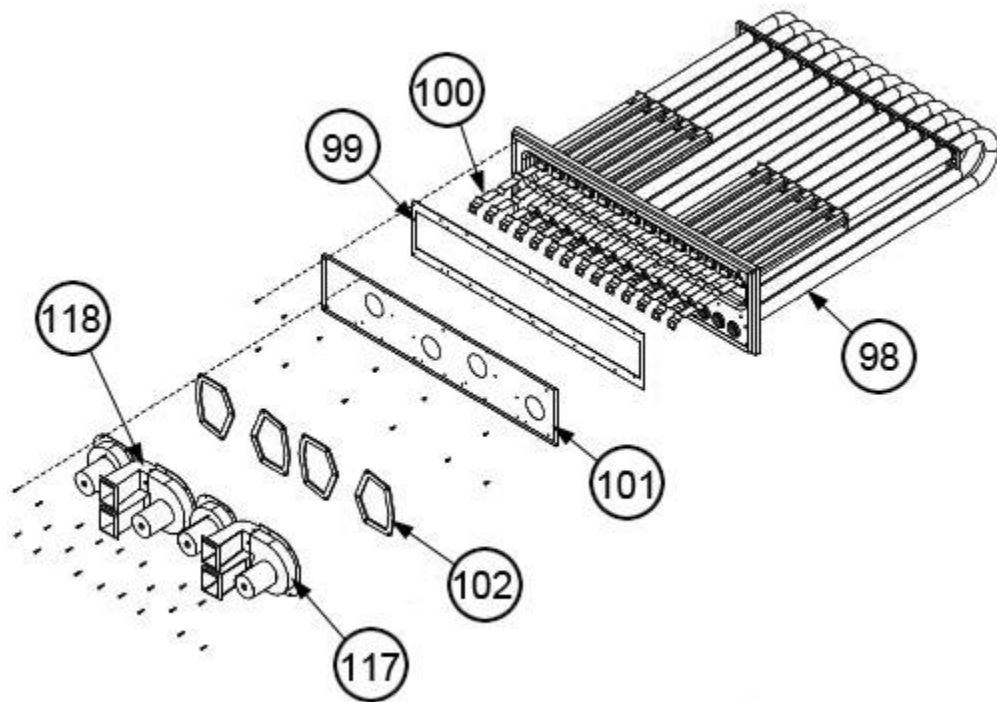
Interior - Back 180



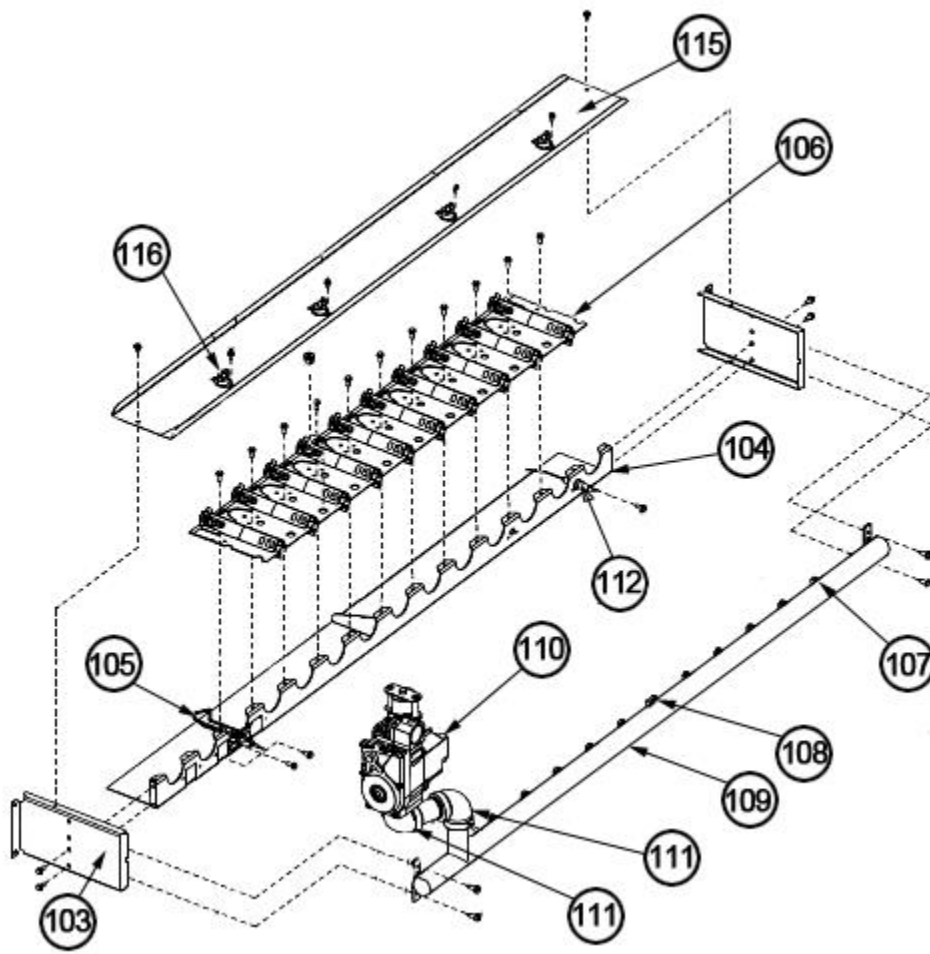
Filter Frame - Low Voltage Shields 180



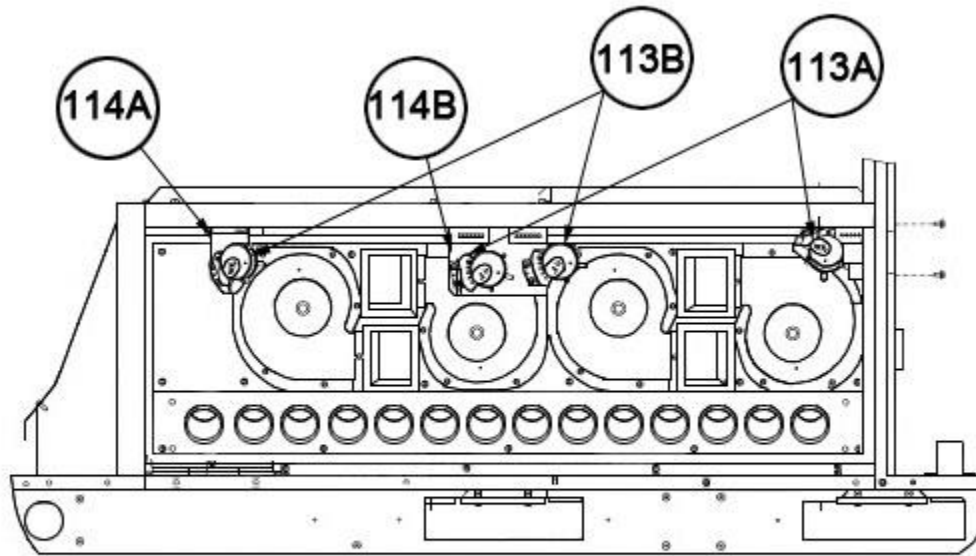
Condenser Coil - 180



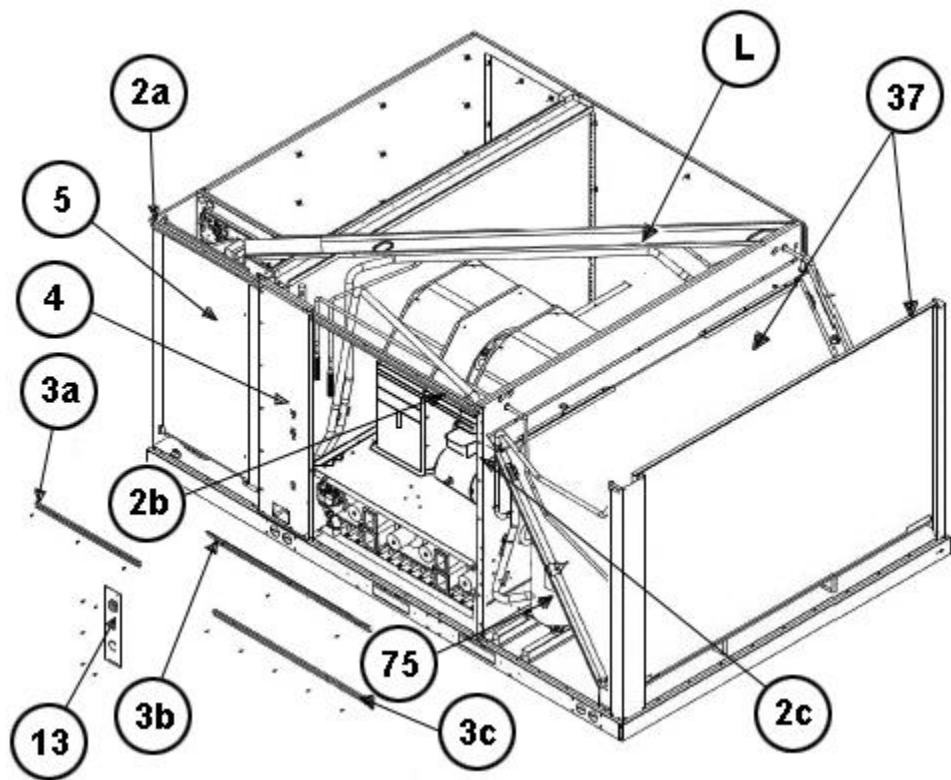
Heat Exchanger Assembly 180



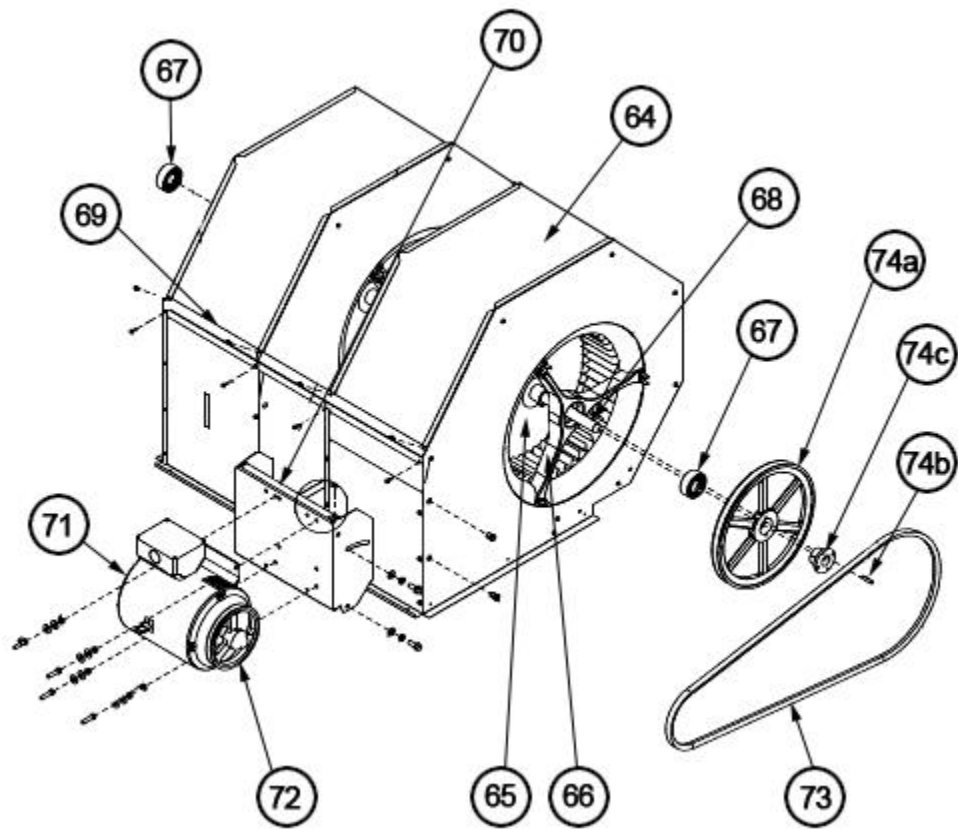
Burner Assembly 180



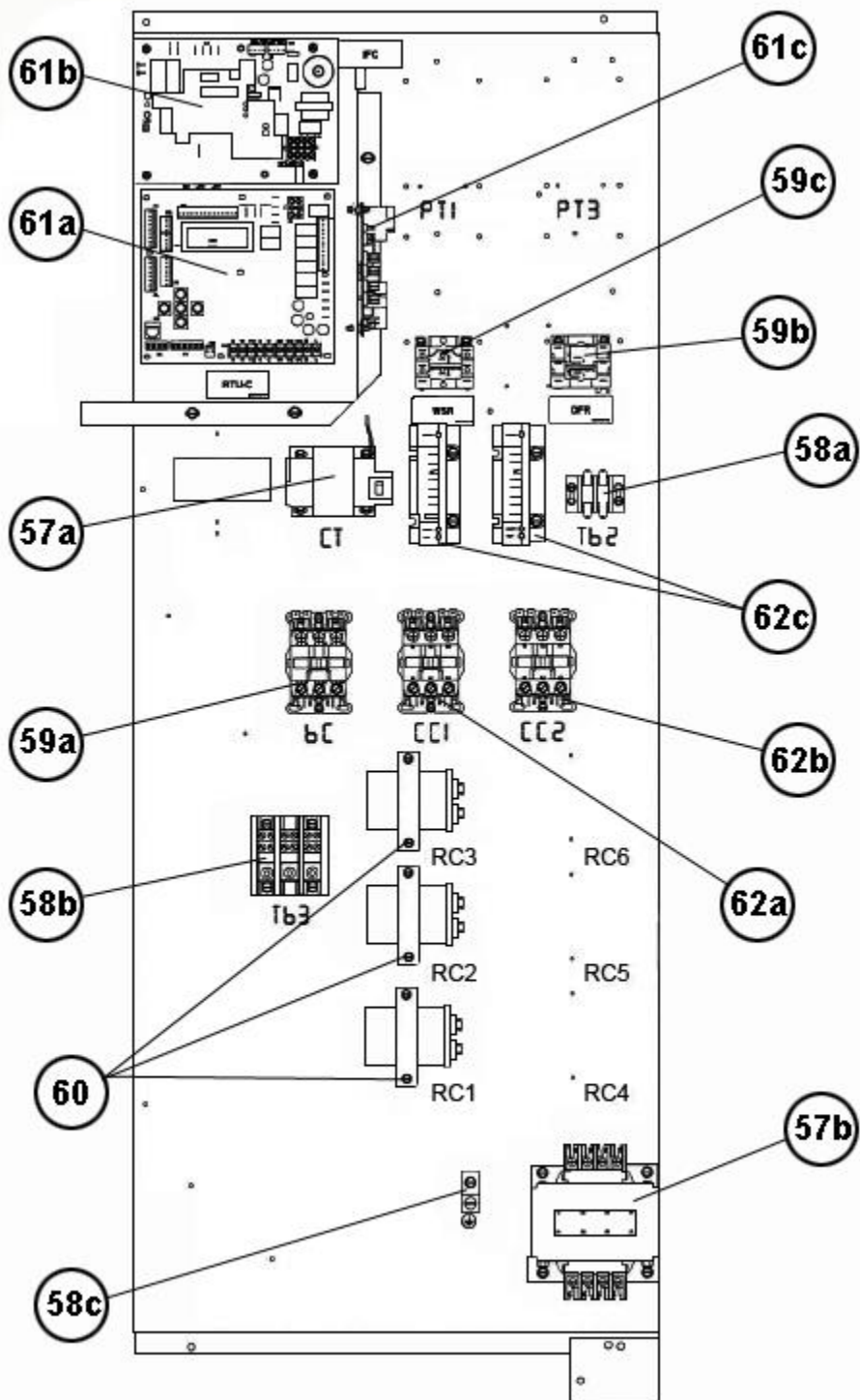
Pressure Switch - Mounting 180



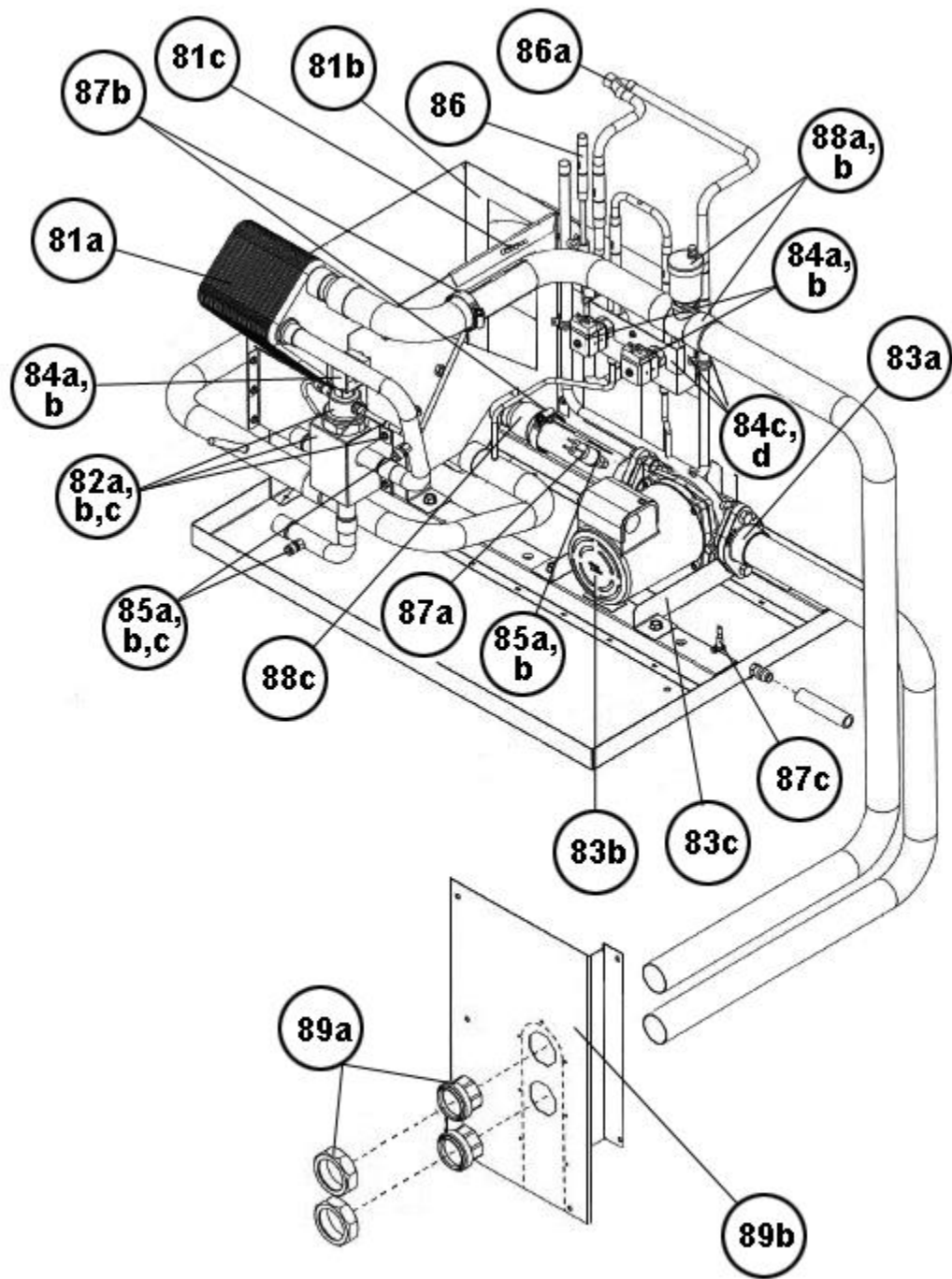
Front Panel Brackets 180



Blower Assembly 180



Control Box 180



Hybrid Assembly 180

NOTES

Stk It is recommended that stock be maintained for this part.

N/A Not Applicable

- 1 Order the specified LP Conversion Kit.
- 2 Order Gas Valve for Natural Gas along with LP Conversion Kit.
- 3 Temperature Sensors are integral with the Wiring Harness.

DISCLAIMER: This document is intended to provide general replacement parts information to aid qualified service personnel in the repair of these models. The complete Model and Serial Number of the unit under repair should be specified when selecting and ordering replacement parts. Specifications and illustrations are subject to change without notice. Document 92-42800-RKHL-D supersedes all previous parts lists for these models. See <http://www.rheempartslists.net/92-42800-RKHL-D> for the latest revision of this document. The manufacturer assumes no obligation for errors or omissions. Service personnel must verify the proper and safe operation of equipment after the replacement of any original components.