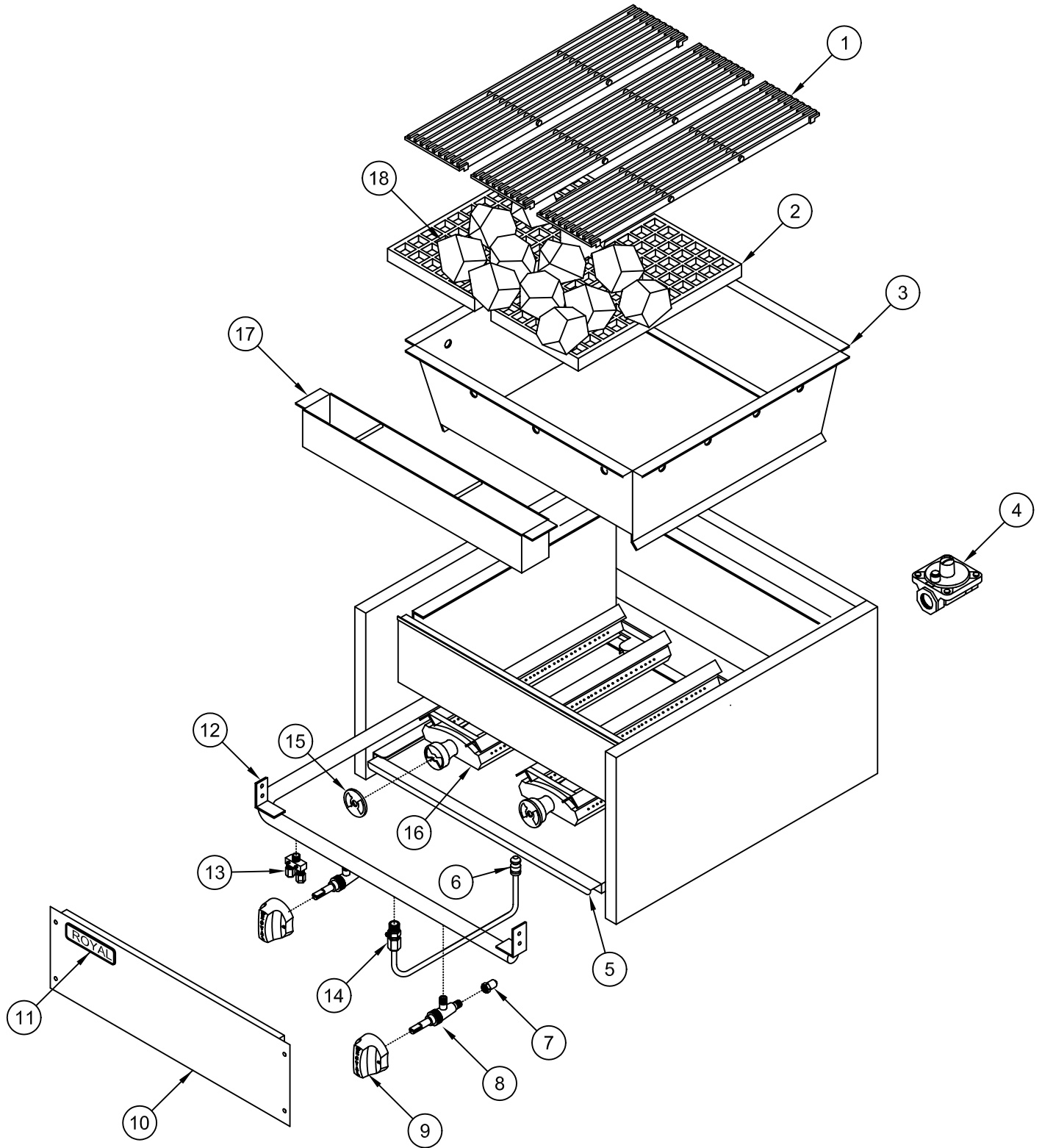
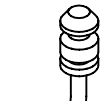
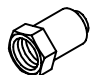
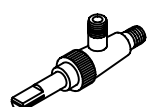

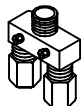




RCB & RSCB Char-rock Broiler



PILOT TIP ASSY	ORIFICE HOOD	GAS VALVE	ON/OFF KNOB	3/16 DUAL PILOT VALVE	SINGLE PILOT	AIR SHUTTER
						
6	7	8	9	13	14	15

RCB & RSCB

Char-rock Broiler

ITEM NO.	PART NO.	DESCRIPTION
1	1800 1801	6 x 24 Top grates (cast iron) for H/D series 5 x 21 Top grates (cast iron) for snack series
2	1802 1803	4" x 20" Bottom grate (waffle grate) for H/D series 8" x 15" Bottom grate (waffle grate) for snack series
3	29901 29902 29903 29904 29905 29906 29907 29908 29909 29910 29911	RCB-18 Fire box assy. RCB-24 Fire box assy. RCB-30 Fire box assy. RCB-36 Fire box assy. RCB-48 Fire box assy. RCB-60 Fire box assy. RSCB-12 Fire box assy. RSCB-18 Fire box assy. RSCB-24 Fire box assy. RSCB-36 Fire box assy. RSCB-48 Fire box assy.
4	1618 1619	Gas pressure regulator (natural gas) Gas pressure regulator (propane Gas)
5	29734 29735 29754 29755 29774 29775 29794 29795 29814 29815 29834	RCB-18 Crumb tray RSCB-18 Crumb tray RCB-24 Crumb tray RSCB-24 Crumb tray RCB-30 Crumb tray RSCB-30 Crumb tray RCB-36 Crumb tray RSCB-36 Crumb tray RCB-48 Crumb tray RSCB-48 Crumb tray RCB-60 Crumb tray
6	1822	Pilot tip assembly
7	1121-33 1122-49 1121-36 1122-50	Orifice hood # 33 (natural gas) for H/D series, 40,000 BTU Orifice hood # 49 (propane gas) for H/D series, 40,000 BTU Orifice hood # 36 (natural gas) for snack series, 35,000 BTU Orifice hood # 50 (propane gas) for snack series, 35,000 BTU
8	1628	Gas valve (brass) w/out orifice
9	3099	Blue knob – flat side up
10	29731 29751 29771 29791 29811 29831	RCB-18/RSCB-18 Valve cover RCB-24/RSCB-24 Valve cover RCB-30/RSCB-30 Valve cover RCB-36/RSCB-36 Valve cover RCB-48/RSCB-48 Valve cover RCB-60 Valve cover

11	2648	Royal logo (Small)
12	3821 3822 3823 3824 3825 3826 3827 3828 3829 3830 3831	RCB-18 Manifold pipe RCB-24 Manifold pipe RCB-30 Manifold pipe RCB-36 Manifold pipe RCB-48 Manifold pipe RCB-60 Manifold pipe RSCB-18 Manifold pipe RSCB-24 Manifold pipe RSCB-30 Manifold pipe RSCB-36 Manifold pipe RSCB-48 Manifold pipe
13	1211	1/8" NPT x 3/16" CC Adjustable double pilot valve (brass)
14	1625	1/8" NPT x 3/16" CC Adjustable single pilot valve (brass)
15	1108	Air shutter (mixer)
16	1410 1411 1420	Burner (cast iron) for H/D series Burner (cast iron) for Snack series Burner (cast iron) for Chicken Broiler (not shown)
17	29915 29916 29917 29918 29919 29920	RCB-18/RSCB-18 Grease can RCB-24/RSCB-24 Grease can RCB-30/RSCB-30 Grease can RCB-36/RSCB-36 Grease can RCB-48/RSCB-48 Grease can RCB-60 Grease can
18	1871	Char-rock (20 lbs. box)