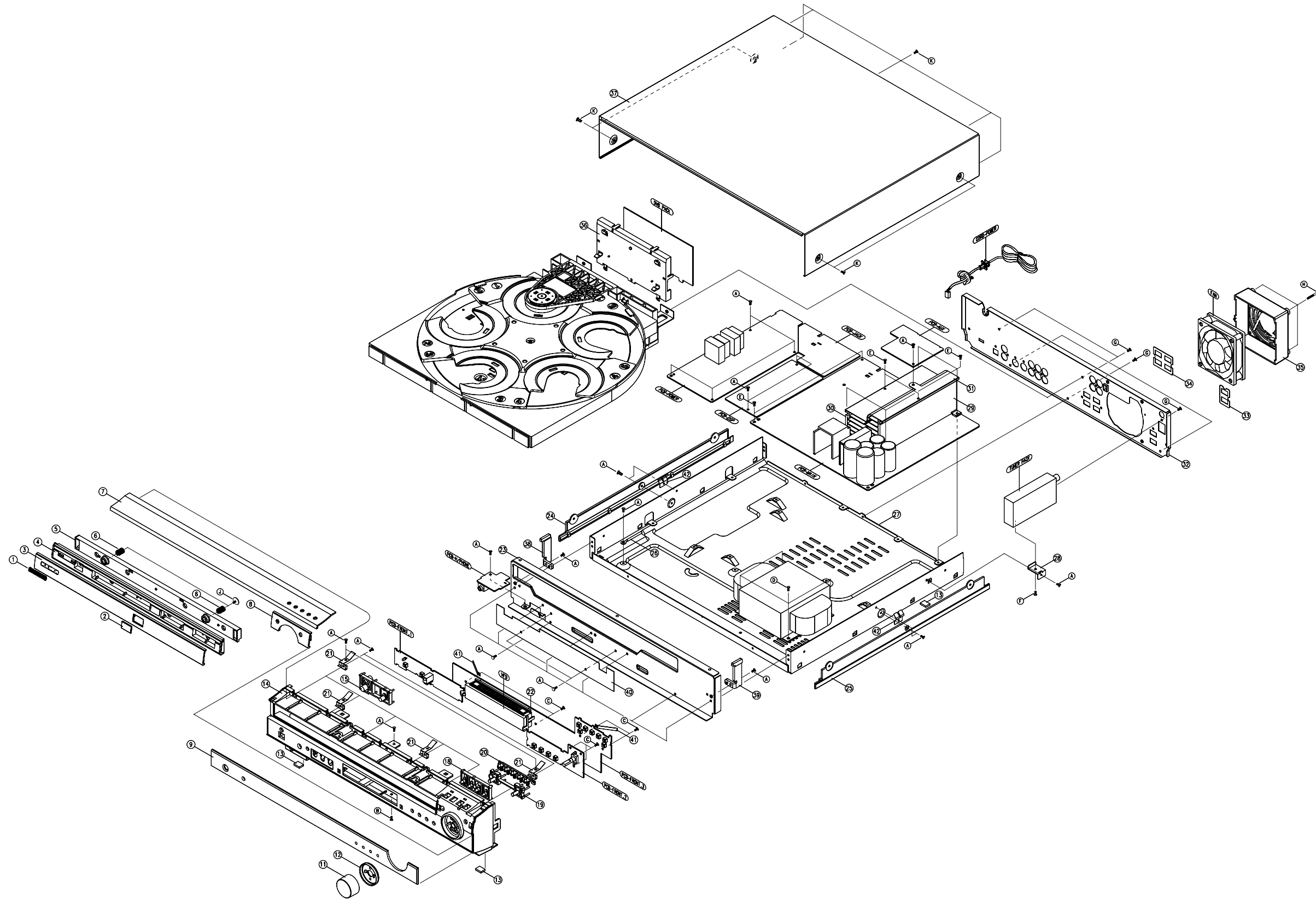


2.Exploded Views and Parts List

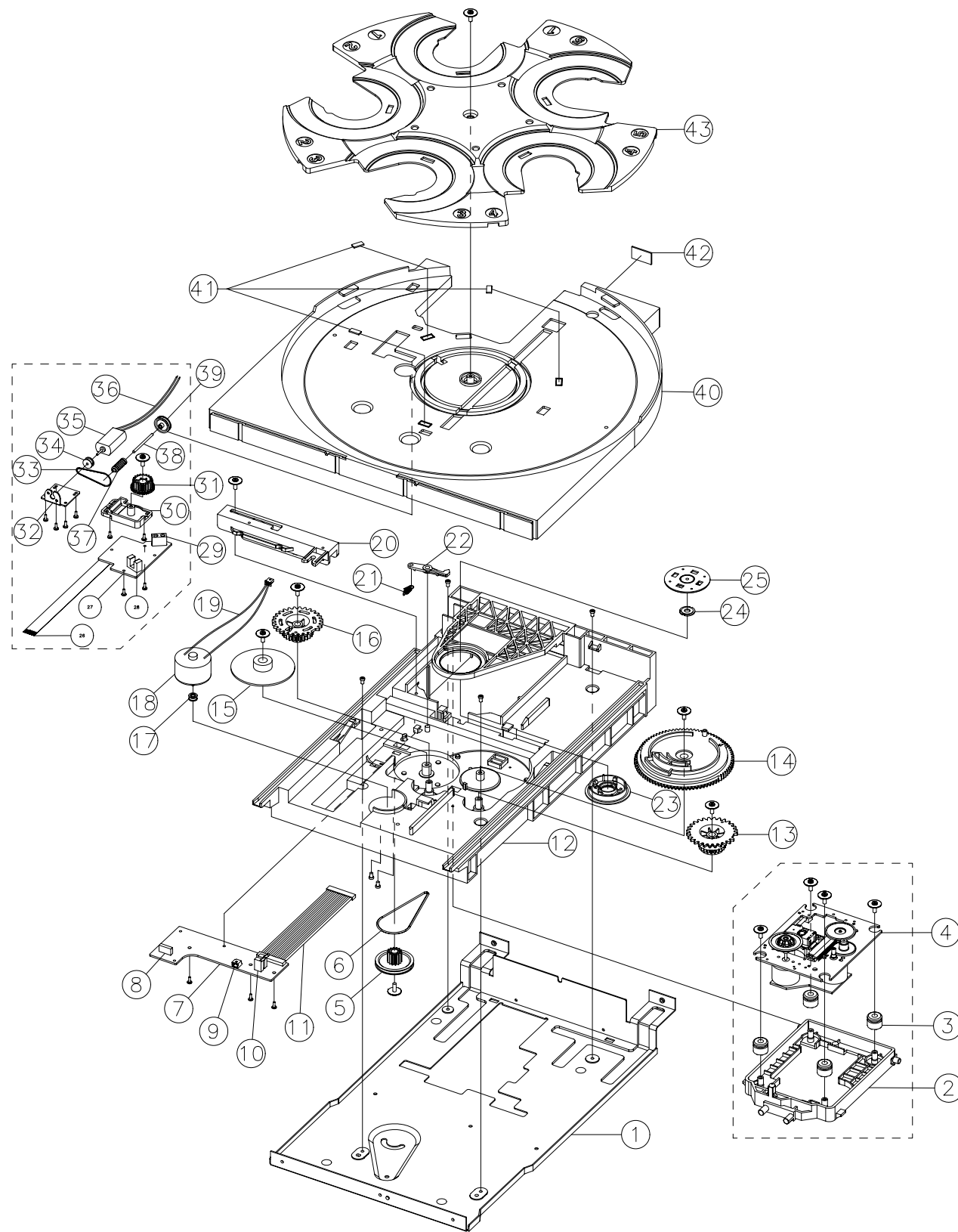
2-1 Total Exploded View



* Parts List of Total Exploded view

No.	Code No.	Description	Specification	Q'ty	REMARK	No.	Code No.	Description	Specification	Q'ty	REMARK
1	AH64-02431A	BADGE-SAMSUNG	AL DIACUT 35mm	1		31	AH61-01331A	BRKT-H/SINK	SECC 0.8T	1	
2	AH64-02421A	DECO-DVD	ACRYL 1.5T	1		32	AH64-02411C	CABINET-REAR	SECC 0.8T, USA/CANADA	1	USA, ASIA
3	AH64-02426D	PANEL-DOOR	AL EXTR 2.0T	1			AH64-02411D		SECC 0.8T,EUROPE	1	EUROPE
	AH64-02426G		AL EXTR 2.0T				AH64-02411E		SECC 0.8T, DUAL VOLTAGE	1	ASIA
4	AH61-01326B	HOLDER-DOOR	ABS 94HB, SILVER	1		33	AH63-00569C	SHEET-SPK,R	PC 0.3T	1	
5	AH61-01327B	HOLDER-TRAY	ABS 94HB, SILVER	1		34	AH63-00569F	SHEET-SPK,CWF	PC 0.3T	1	
6	AH61-01333A	SPRING-DOOR	SUS 304,WPB PI0.6	2		35	AH61-00340A	COVER-FAN	ABS 94HB, HT-DL200	1	
7	AH64-02424C	PANEL-TOP	AL EXTR 2.0T	1	ASIA	36	AH61-01330A	HOLDER-PCB	ABS 94HB	1	
	AH64-02424D				USA	37	AH64-02413A	CABINET-TOP	PCM 0.625T	1	
	AH64-02424E				EUROPE	38	AH61-01398A	BRKT-LEFT	AL SHEET 3T	1	
8	AH64-02425C	PANEL-FRONT	AL EXTR 2.0T	1		39	AH61-01399A	BRKT-RIGHT	AL SHEET 3T	1	
9	AH64-02420B	WINDOW-VFD	ACRYL 3.0T	1		40	AH61-01374D	BRACKET-GND,FRONT	PBS 0.3T	1	
	AH64-02420C					41	AH61-10646C	BRACKET-GND,PCB	PBS 0.2T	2	
	AH64-02420D					42	AH61-01374C	BRACKET-GND,SIDE	PBS 0.3T	2	
10	AH61-01383B	HOLDER-WINDOW	ABS 94HB, SILVER	1		A	6002-000398	SCREW-TAPPING	BH M3*6 YEL	20	
11	AH81-01117B	VOLUME ASSY	ALUMINUM + ABS	1		B	6002-000126	SCREW-TAPPING	FH M3*10 BLK	1	
12	AH67-00221A	LENS-VOLUME	ACRYL MILKY	1		C	AH60-10020D	SCREW-TAP TITE	RH M2.6*8 YEL	7	
13	AH73-00005A	CUSHION-FOOT	EVA SPONGE 1.5T	4		D	AH60-10107A	SCREW-TAP TITE	TH M4*6 YEL ('S' TYPE)	4	
14	AH64-02414C	CABINET-FRONT	PS 94HB, SILVER	1		E	6003-000283	SCREW-TAP TITE	BH M3*8 YEL	6	
	AH64-02414D		PS 94HB, SILVER	1		F	6003-001076	SCREW-TAP TITE	BH M3*6 YEL ('S' TYPE)	1	
	AH64-02414E		PS 94HB, SILVER	1		G	AH60-00025A	SCREW-TAP TITE	BH M3*10 SILVER	18	
15	AH64-02415B	KNOB-POWER	ABS 94HB, VACUUM COATING	1		H	AH60-10179A	SCREW-TAP TITE	BH M3*35 YEL	3	
16	AH67-00220B	LENS-DSP	ACRYL, HOT-STAMPING	1		J	6003-001210	SCREW-TAP TITE	PWH M2.6*6 YEL	2	
17	AH61-01328A	HOLDER-DSP	ABS 94HB	1		K	6003-001499	SCREW-TAP TITE	BWH M3*8 SILVER	7	
18	AH64-02416B	KNOB-PLAY	ABS 94HB, VACUUM COATING	1							
19	AH64-02417B	KNOB-OPEN	ABS 94HB, SILVER	1							
20	AH64-02418B	KNOB-DIRECT	ABS 94HB, SILVER	1							
21	AH61-01374A	BRKT-GND	PBS 0.3T	4							
22	AH61-01329A	HOLDER-VFD	ABS 94HB	1							
23	AH61-01334A	BRKT-FRONT	SECC 0.8T	1							
24	AH64-02422B	DECO-SIDE,L	ABS 94HB, D/GRAY	1							
25	AH64-02423B	DECO-SIDE,R	ABS 94HB, D/GRAY	1							
26	AH65-30010A	CLAMP-CORD	DALB-2	1							
27	AH64-02412A	CABINET-BOTTOM	SECC 1.0T	1							
28	AH61-01332A	BRKT-TUNER	SECC 0.8T	1							
29	AH62-00086A	HEAT-SINK,L	AL EXTRUDE	1							
30	AH62-00087A	HEAT-SINK,S	AL EXTRUDE	1							

2-2 DVD MECHA Exploded View and Parts list

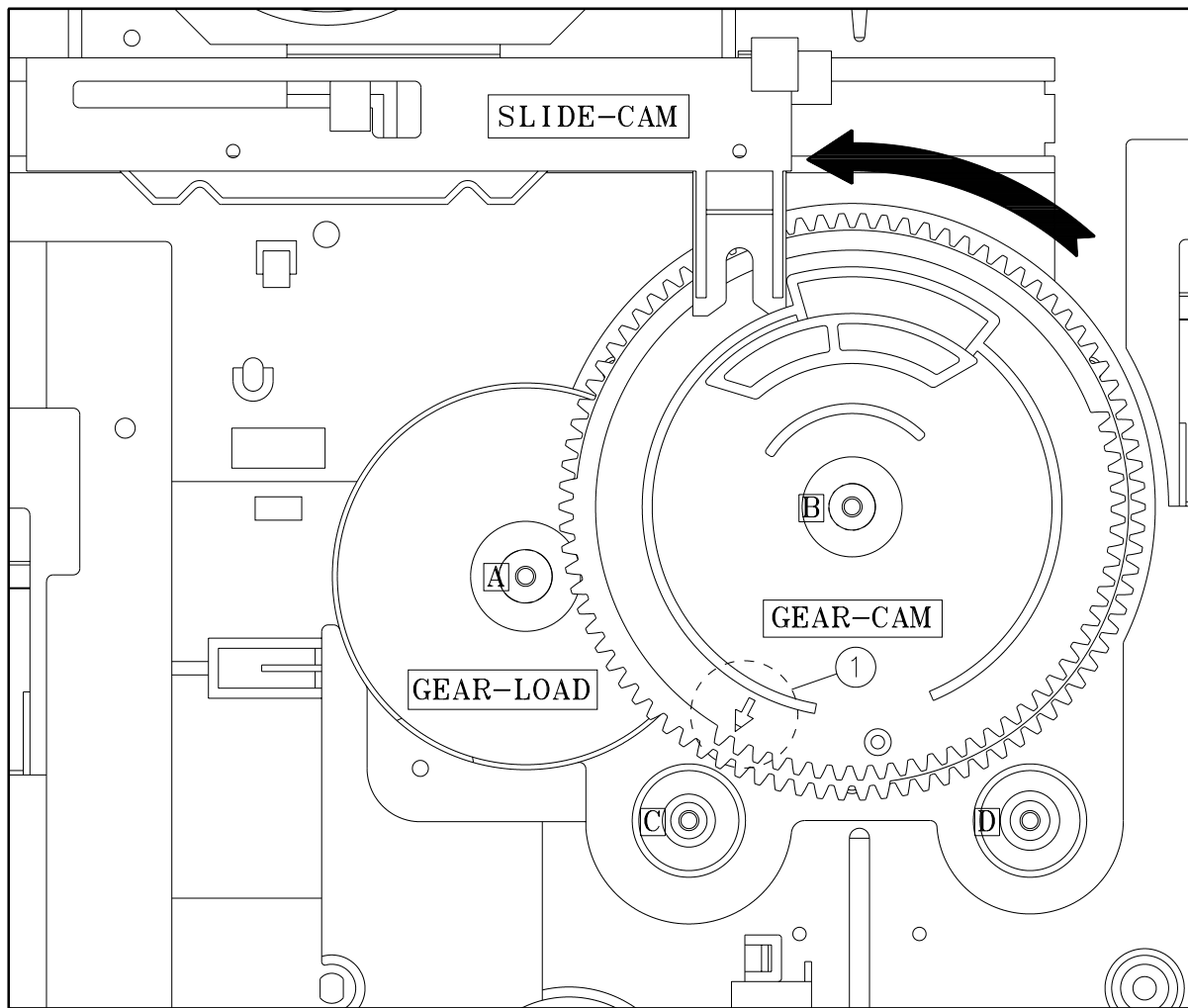


*** Caution:** Actually, the whole MECHA do not include DECK ASSY.
DECK ASSY should be requested separately at service repair.

No.	Code No.	Description ;	Specification
	AH59-01164A	DECK-MECHA ASS'Y	CMS-R500
1	AH64-02343A	CHASSIS-MAIN	SECC, t=1.0
2	AH66-00202A	LEVER-LIFT	ABS(PC+ABS),GP-2200/LG,BLK
3	AH73-00025B	RUBBER-CD	BUTYL 15
4	AH59-00130A	DECK-DVD	CMS-S21MG6
5	AH66-00206A	GEAR-PULLEY	POM(N109/LG), NTR
6	AH66-60034A	BELT-LOAD	CR, Ø48*1.5t
7	AH41-00558A	PCB-DECK	FR-1(PENOL), t=1.6
8	3708-001832	WAFER	8P, 1.25 pitch (00-6216-008-000-808)
9	3711-000826	WAFER	2P,ANGLE TYPE
10	3405-000101	SWITCH	MLS-24
11	AH39-00468A	CONN-DECK	13P, UL1007 #24 200mm
12	AH61-01286A	BASE-MAIN	ABS(HF-0660I/CHEIL), NTR
13	AH66-00204A	GEAR-CONVERT	POM(N109/LG), BLK
14	AH66-00201A	GEAR-CAM	POM(N109/LG), BLK
15	AH66-00205A	GEAR-LOADING	POM(N109/LG), BLK
16	AH66-00203A	GEAR-TRAY	POM(N109/LG), NTR
17	AH66-00200A	PULLEY-MOTOR	POM(N109/LG), BLK
18	AH31-10021A	MOTOR-LOADING	RF-500TB-12560
19	AH39-00467A	CONN-L/MOTOR	2P, UL1571 #28, 170mm(junction)
20	AH66-00211A	SLIDE-CAM	ABS(HF-0660I/CHEIL), BLK
21	AH61-00125A	SPRING-LOCKER	SUS304 WPB, Ø0.4
22	AH66-00208A	LEVER-CAM	POM(N109/LG), NTR
23	AH66-00165A	CLAMP-LOWER	POM(N109/LG), NTR
24	AH61-00747A	BRACKET-CHUCK	SECC, t=1.0
25	AH66-00164A	CLAMP-UPPER	POM(N109/LG), NTR
26	3809-001447	FFC-TRAY	8P, 1.25 pitch, (0.05*0.65), 165mm
27	AH41-00559A	PCB-TRAY	FR-1(PENOL), t=1.6
28	AH32-10001F	SENSOR-ROULETTE	SG-207
29	0604-001005	SENSOR-DISC	GP2S28
30	AH66-00221A	BASE-WORM	ABS(SR0320V/CHEIL), BLK
31	AH66-00212A	GEAR-ROULETTE	TPE(BT-1063D), NTR
32	AH61-01288A	BRACKET-MOTOR	SECC, t=1.0
33	AH63-00546A	BELT-ROULETTE	CR, Ø18.7*1.2t
34	AH66-00213A	PULLEY-MOTOR TRAY	POM(N109/LG), BLK
35	AH31-00038A	MOTOR-TRAY	FF-050SK-11170
36	AH66-00223A	WIRE-MONO	UL1571 #28, 80mm
37	AH66-00207A	GEAR-WORM	POM(N109/LG), BLK
38	AH66-00210A	SHAFT-WORM	SUS 303 Ø2.0
39	AH66-00222A	PULLEY-WORM	POM(N109/LG), BLK
40	AH63-00525A	TRAY-DISK	ABS(SR0320V/CHEIL), DARK GRAY(8C253)
41	AH63-00526A	FELT-ROULETTE	FELT, 9*4*1.1t
42	AH63-00527A	FELT-LOADING	PORON, 10*20* 1.5t
43	AH63-00528A	ROULETTE-DISK	ABS(SR0320V/CHEIL), DARK GRAY(8C253)

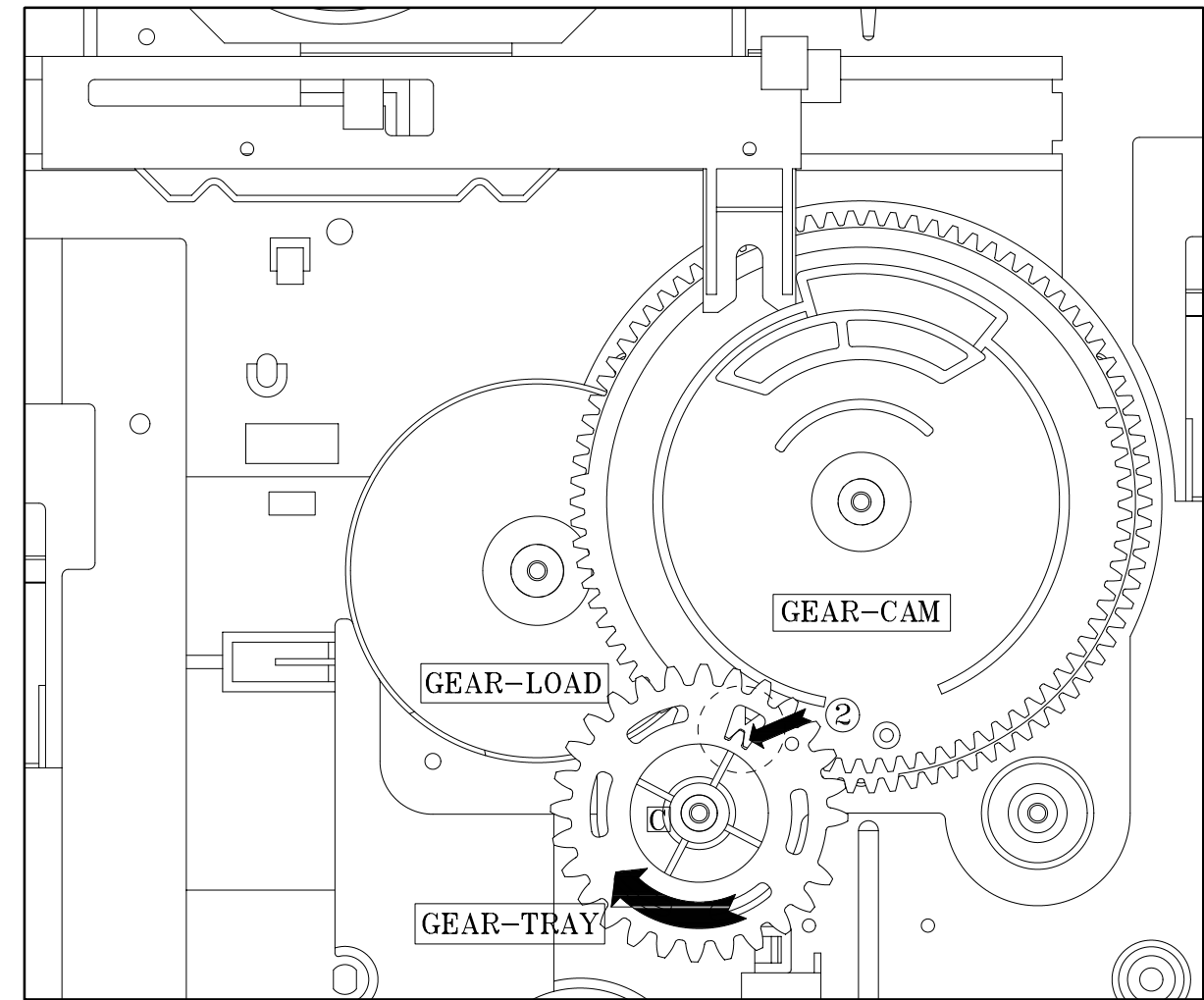
* Gears arrange method for the Tray-Disk insertion

1. Assemble the Gear-Load to the boss **A** of Base-Main, then assemble the Gear-Cam to the boss **B**.
2. Rotate the Gear-Cam until the arrow **1** on the Gear-Cam point to the boss C.



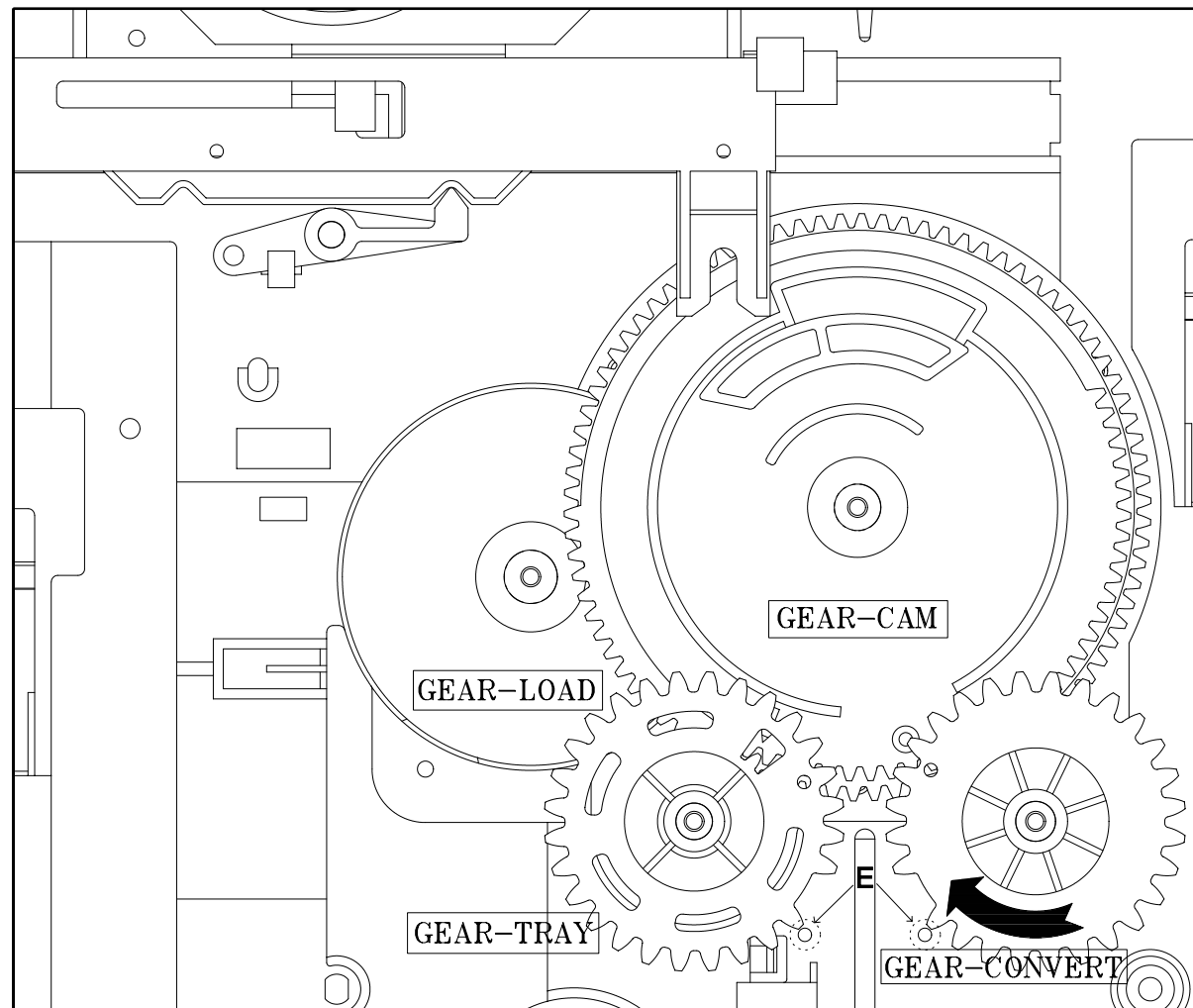
< Figure 1 >

3. Assemble the Gear-Tray to the boss **C** as shown in Figure 2.
4. Rotate the Gear-Tray, till the Gear-Tray tooth 2 point to the arrow **1** of Gear-Cam.



< Figure 2 >

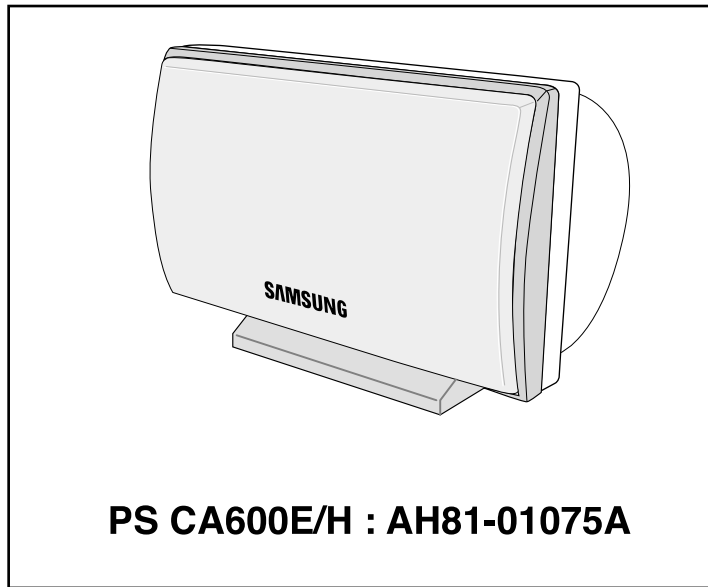
5. Assemble the Gear-Convert to the boss **D** of Base-Main.
6. Rotate the Gear-Cam CCW direction, until the Gear-Cam does not rotate.
7. Rotate the Gear-Convert, until the tooth shapes of Gear-Convert and Gear-Tray is symmetry. At this time Gears teeth point out the mark **E** of the Base-Main as shown in Figure 3.
8. Insert the Tray-Disk.



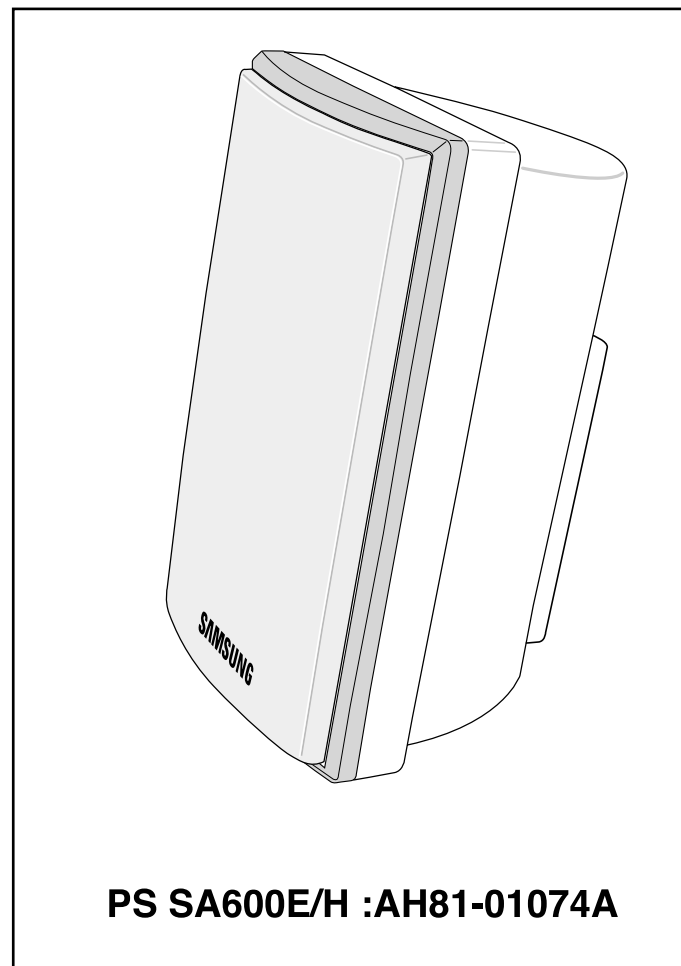
< Figure 3 >

2-4 SPEAKER Exploded View and Parts list

*** Center Speaker**



*** Satellite Speaker**



* CAUTION : It is used the bonding, connect NET FRAME(or FRONT PANEL ASS'Y) to CABINET ASS'Y.
So when the disassembly, take extreme care not to damage the SPEAKER.

*** SUBWOOFER**

