

SOMERSET

CDR-100

Dough Sheeter OPERATIONS MANUAL



WARNING!!! DO NOT CLEAN OR SERVICE THE MACHINE WITHOUT PRESSING THE RED BUTTON AND UNPLUGGING THE ELECTRICAL CORD FROM THE POWER SUPPLY. KEEP YOUR FINGERS AND HANDS FROM THE ROLLER AREA WHEN OPERATING OR SERVICING THE MACHINE. DO NOT OPERATE THE MACHINE WITHOUT THE GUARDS IN PLACE. IF THE MACHINE KEEPS RUNNING WITH SAFETY GUARDS REMOVED, IMMEDIATELY PRESS THE STOP BUTTON AND REMOVE THE PLUG FROM THE POWER SOURCE. CALL THE FACTORY OR A QUALIFIED SERVICE REPRESENTATIVE. DO NOT ATTEMPT TO OPERATE THE MACHINE UNTIL PERMITTED BY THE SERVICE TECHNICIAN.

SOMERSET INDUSTRIES

137 PHOENIX AVE • LOWELL, MA 01852 • USA •
+1-978-667-3355 Email: somerset@smrset.com
Web: www.smrset.com

NOTICE: READ CAREFULLY ALL INSTRUCTIONS BEFORE YOU START:

UNCRATING AND SETUP

Cut off the fastener wrapped around the machine and the base.

Lift the machine straight up out of the wooden base.

Install the machine in its final position or temporarily secure it to a solid surface.

Wipe off any dirt that may have accumulated during shipping. Use a soft cloth.

Check the nameplate for correct voltage and frequency.

Turn the machine's power switch to "OFF".

Plug the machine to the proper power source that matches the nameplate requirements.

Turn the power switch "ON" and check for proper operation of the machine.

!! WARNING !!

NEVER OPERATE THE MACHINE WITHOUT GUARDS IN PLACE!!

KEEP YOUR HANDS AWAY FROM INFEED !!

DO NOT INSERT FOREIGN OBJECTS INTO INFEED !!

DO NOT CLEAN MACHINE WHILE CONNECTED TO ELECTRICAL SUPPLY.!!

WATCH YOUR HANDS AND FINGERS !!

NOTE: The machine will not operate when safety cover is removed.

OPERATING PROCEDURE

The rollers are easily adjustable to any thickness of crust you may need.

Release the adjusting handle, by squeezing the handle.

Move the handle to the left, to decrease the dough thickness.

Move the handle to the right, to increase the dough thickness.

OPERATION

Dust the infeed tray with flour before using the machine.

For best results the dough to be rolled should be at room temperature.

Dust the dough with flour when putting it on the infeed tray.

Follow steps 1 to 3 as in the following diagram:



- Step 1: Place dough on infeed tray
- Step 2: Dough exits
- Step 3: Decrease thickness (move handle to the left)

Repeat steps 1 to 3 until the desired thickness is obtained.

If the dough tears or the machine makes a thumping sound, this indicates that the dough is too thick to go through that particular setting of the rollers or the dough is too cold and stiff and requires longer rest period before use.

IF THE DOUGH GETS STUCK, TURN THE POWER OFF, REMOVE SAFETY COVER THEN REMOVE THE DOUGH.

NEVER ATTEMPT TO MOVE THE DOUGH BY HAND WHILE THE MACHINE IS RUNNING.

CLEANING

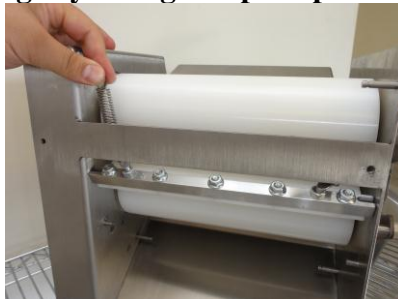
**!! BEFORE CLEANING !!
TURN POWER OFF AND DISCONNECT THE POWER CORD OF THE
MACHINE**

Remove the safety cover by removing the four thumb screws.



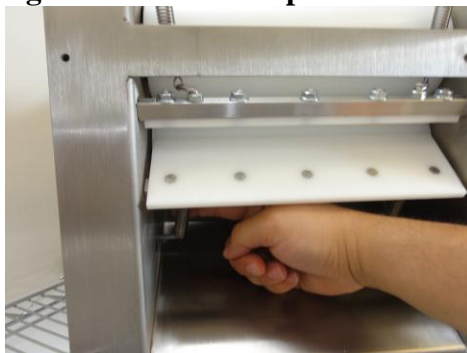
Top Scraper #3

Remove scraper from its mounting pins by pushing scraper downward. Unhook both springs by lifting scraper up and remove it.



Bottom Scraper #2

Unhook both springs attached on scraper and remove it by lifting up.



By removing both scrapers, the whole machine is exposed and ready to be cleaned.

Clean the rolls with dry cloth (never use water).

Wipe rollers with lightly oiled cloth (use vegetable oil).

Wash, dry and apply a thin film of vegetable oil on the edge of the scraper that touches the roller.

Install the scrapers in the opposite order of their removal.

Close the safety cover and secure it with the 4 thumb screws.

Turn the power ON, and the machine is ready for use.

- ◆ **Equipment food-contact surfaces should be clean to sight and touch.**
- ◆ **Equipment food-contact surfaces should be sanitized.**

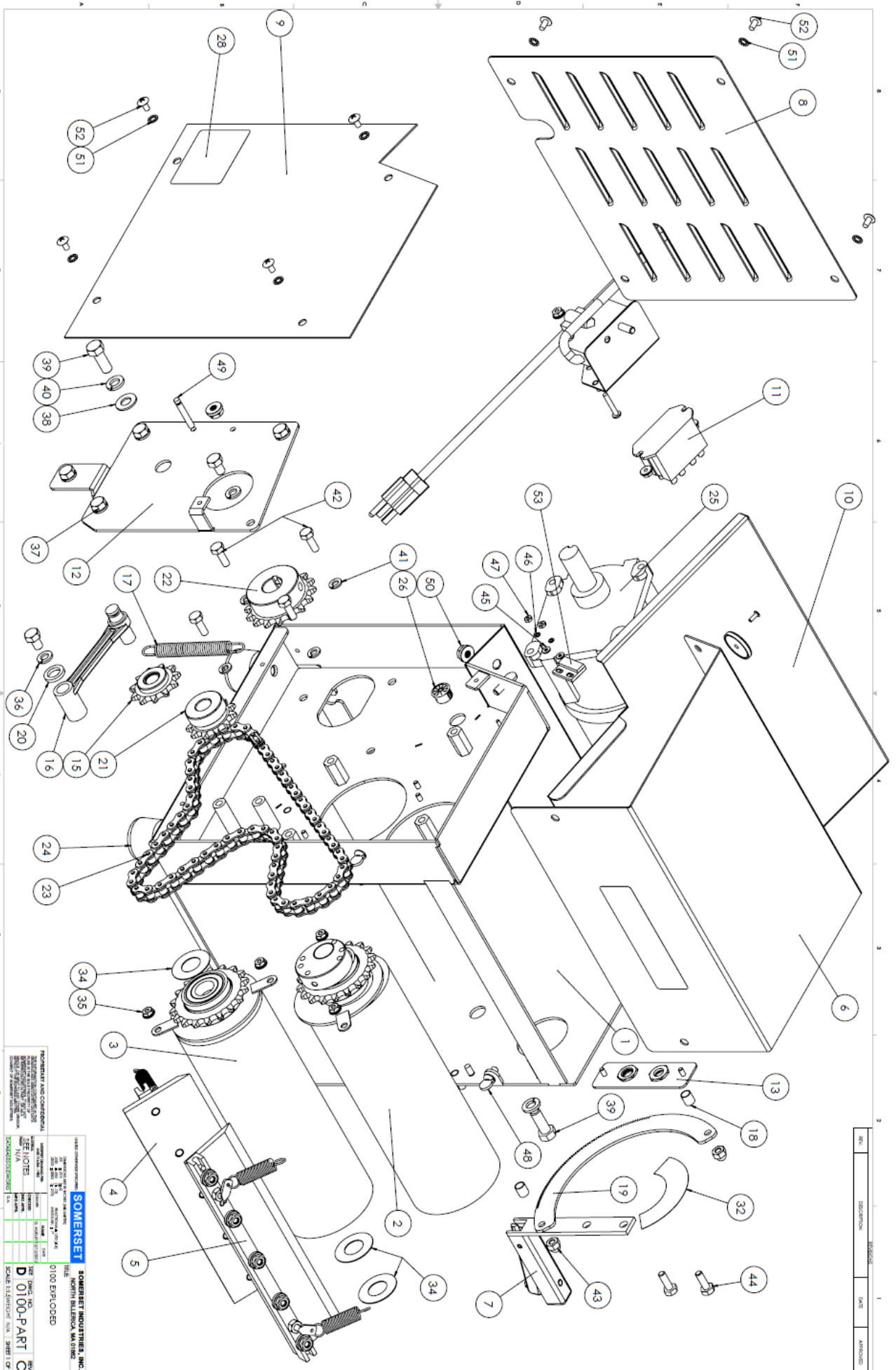
CAUTION

!! THIS MACHINE IS MAINTENANCE FREE!!

!! NEVER USE OIL OR GREASE ON ANY OF THE PARTS OF THE MACHINE!!

!! ALL PARTS ARE PERMANENT SELF LUBRICATED!!

| | | | | |
|------|-------------|----------|------|----------|
| REV. | DESCRIPTION | REVISION | DATE | APPROVED |
| | | | | |



SOMERSET
SOMERSET INDUSTRIES, INC.
 0100 PART C
 0100 EMPLOYED
 NORTH BILBOCK WASHING
 0100 PART C
 0100 EMPLOYED
 0100 PART C
 0100 EMPLOYED
 0100 PART C
 0100 EMPLOYED
 0100 PART C
 0100 EMPLOYED
 0100 PART C
 0100 EMPLOYED

| ITEM NO. | PART NUMBER | DESCRIPTION | QTY. | ITEM NO. | PART NUMBER | DESCRIPTION | QTY. | ITEM NO. | PART NUMBER | DESCRIPTION | QTY. |
|----------|-------------|--------------------------------|------|----------|---------------------------------|------------------------|----------|----------|--|--------------------|------|
| 1 | 0100-010 | FRAME CDR-100 MAIN | 1 | 2000-319 | DISC, MIDDLE | 1 | 4000-550 | 4000-550 | BUSHING, GARLOCK | 1 | |
| | 0100-011 | BASE, LEFT SIDE | 1 | 2000-023 | BRACKET, DISK | 2 | 16 | 2100-428 | BUSHING, ARM, IDLER | 1 | |
| | 3010-219 | PEM, FHS-061-6-1621 | 4 | 3010-302 | PIN, 215 187-125 | 1 | 17 | 4000-252 | SPRING, EXTENSION, 4LG X .5 DIA. X .063 | 1 | |
| | 3010-206 | PEM, FHS 420-12 | 2 | 0100-501 | SCRAPER, COMPLETE #2 | 1 | 18 | 2000-418 | SPACER TUBING | 2 | |
| | 3010-203 | PEM, FHS-207-8 | 2 | 0100-521 | SHAFT, SCRAPER #2 & #3 | 1 | 19 | 0100-417 | PLATE ADJUSTING | 1 | |
| | 3010-201 | PEM, YC3-16144 | 2 | 0100-511 | SCRAPER #2 | 1 | 20 | 4000-011 | SPACER, SMD X 780D X 1.23 PL | 1 | |
| | 2000-015 | LOCATOR PLATE | 2 | 3010-202 | PEM, FHS-0420-16 | 5 | 21 | 4000-521 | SPROCKET 41811 W/ BUSHING | 1 | |
| | 0100-011 | BASE, RIGHT SIDE | 1 | 3000-303 | NUT, FLANGE 1/4-20 | 5 | 21 | 4000-501 | SPROCKET 41811H TAKEUP | 1 | |
| | 0100-012 | SIDE, RIGHT | 1 | 3000-306 | NUT, HEX 1/4-20 | 2 | 22 | 4000-551 | BUSHING 08DU 1/4 GARLOCK | 1 | |
| | 3010-201 | PEM, YC3-16144 | 2 | 3010-100 | STUD, SCRAPER 21/32 BENT | 2 | 22 | 4000-502 | SPROCKET 41818H X 3/4 W/ KEY | 1 | |
| | 3010-203 | PEM, FHS-207-8 | 2 | 4000-251 | SPRING, SCRAPER | 2 | 23 | 4000-350 | CHAIN 41 RIV 69 | 1 | |
| | 3010-204 | PEM, FHS-0518-8 | 5 | 0100-502 | SCRAPER, COMPLETE #2 | 1 | 24 | 4000-300 | LEG TIP RUBBER | 4 | |
| | 3010-205 | PEM, FHS-832-6 | 4 | 0100-521 | SHAFT, SCRAPER #2 & #3 | 1 | 25 | 5000-116 | GEAR MOTOR, 1/4 HP BISON (CDE-100 REPLACEMENT) | 1 | |
| | 3010-212 | PEM, FHS-440-6 | 2 | 0100-512 | SCRAPER #3 | 1 | 26 | 5000-278 | BUSHING, FINGER, 625 HOLE | 1 | |
| | 0500-015 | LOCATOR HSG #10 | 1 | 3010-202 | PEM, FHS-0420-16 | 5 | 27 | 5000-276 | BUSHING, 90 STR REL HEGCO1320 | 1 | |
| | 0100-012 | SIDE, RIGHT | 1 | 3000-303 | NUT, FLANGE 1/4-20 | 5 | 28 | 5000-311 | LABEL, ETL | 1 | |
| | 0100-013 | PARTITION | 1 | 3000-306 | NUT, HEX 1/4-20 | 2 | 29 | 5000-312 | LABEL, "SOMERSET 3" | 1 | |
| | 3010-206 | PEM, FHS 420-12 | 1 | 3010-100 | STUD, SCRAPER 21/32 BENT | 2 | 30 | 5000-313 | LABEL, "KEEP FINGERS..." | 1 | |
| | 0100-013 | PARTITION | 1 | 4000-251 | SPRING, SCRAPER | 2 | 31 | 5000-314 | LABEL, "DO NOT OPERATE..." | 1 | |
| | 0100-017 | CHANNEL TOP | 1 | 0100-121 | COVER, SAFETY COMPLETE | 1 | 32 | 5000-316 | LABEL, CCW INDICATOR GRADUATED | 1 | |
| | 0100-034 | FOOT, 1.0 TALL X 1.125 DIA | 4 | 4000-150 | MAGNET SAFETY COVER | 1 | 33 | 5000-317 | LABEL, NSF | 1 | |
| | 4000-233 | SPACER, HEX 0.5 X 1.0 | 4 | 3010-500 | RIVET, 1/8 X .375 | 1 | 34 | 3000-225 | WASHER, NYLATRON 1.50 | 3 | |
| | 2000-431 | SHAFT ALIGNMENT, IDLER SUPPORT | 2 | 0100-424 | HANDLE, ADJUST COMPLETE | 1 | 35 | 3000-300 | NUT, FLANGE 8-32 | 6 | |
| | 3000-102 | WASHER, LOCK SPLIT 5/16 | 1 | 0100-420 | HANDLE, ADJUST COMPLETE | 1 | 36 | 3000-102 | WASHER, LOCK SPLIT 5/16 | 6 | |
| | 3000-406 | SCREW, 5/16-18 X 3/4 HEXD GR8 | 1 | 0500-423 | TRIGGER, HANDLE | 1 | 37 | 3000-405 | SCREW, 5/16-18 X 1/2 HEXD | 6 | |
| 2 | 0100-400 | ROLL, ASM UPPER | 1 | 3010-300 | PIN, 215 187-075 | 1 | 38 | 3000-201 | WASHER, FLAT 3/8 | 1 | |
| | 0100-407 | SHAFT, UPPER AND LOWER | 1 | 4000-256 | SPRING, HANDLE COMPRESSION | 1 | 39 | 3000-409 | SCREW, 3/8-16X1 HEXHD SS | 2 | |
| | 0100-457 | ROLL, SYNTHETIC/PIPE | 1 | 3010-216 | PEM, FHS-032-6 | 1 | 40 | 3000-103 | WASHER, LOCK SPLIT 3/8 | 2 | |
| | 0100-403 | PIPE ROLL 11.11 | 1 | 0100-301 | PANEL, LOUVERED | 1 | 41 | 3000-106 | WASHER, LOCK SPLIT 1/4 | 4 | |
| | 0100-451 | ROLL, EIT 0003971VAR | 1 | 0100-302 | COVER, HOUSING | 1 | 42 | 3000-417 | SCREW, 1/4-28 X 3/4 HEXHD | 4 | |
| | 4000-100 | BEARING, R128S ROLL | 2 | 10 | 0100-300 | TRAY, INTAKE | 1 | 43 | 3000-302 | NUT, ACONRN 1/4-20 | 2 |
| | 3000-225 | WASHER, NYLATRON 1.50 | 2 | 3010-101 | STUD, WELD COPPER 1/4-20 X 1/2 | 2 | 44 | 3000-404 | SCREW, 1/4-20 X 3/4 HEXHD | 2 | |
| | 2000-412 | SPROCKET 41818H ROLL | 1 | 11 | 0100-632 | HARNES/RELAY ASSY 120V | 1 | 45 | 3000-204 | WASHER, FLAT #4 | 2 |
| | 0500-318 | DISC, TOP COMPLETE | 1 | 2000-632 | RELAY 110 VAC | 1 | 46 | 3000-104 | WASHER, LOCK SPLIT #4 | 2 | |
| | 0500-320 | DISC, TOP | 1 | 2000-328 | BRACKET, RELAY | 1 | 47 | 3000-309 | NUT, HEX 4-40 | 2 | |
| | 2000-023 | BRACKET, DISC | 2 | 3010-205 | PEM, FHS-832-6 | 3 | 48 | 3000-403 | SCREW, 1/4-20 X 1/2 THUMB W/SHOULDER | 4 | |
| | 2000-023 | BRACKET, DISK | 1 | 3010-206 | PEM, FHS 420-12 | 1 | 49 | 3010-151 | STUD, SCRAPER 1 3/8" | 1 | |
| | 2000-411 | ECCENTRIC, UNIVERSAL | 1 | 5000-230 | HARNES, POWER MOLDED | 1 | 50 | 3000-303 | NUT, FLANGE 1/4-20 | 4 | |
| | 0500-409 | ECCENTRIC, UNIVERSAL | 1 | 5000-150 | RELAY, 120 VAC | 1 | 51 | 3000-101 | WASHER LOCK #10 INT TOOTH | 8 | |
| | 3010-302 | PIN, 215 187-125 | 3 | 3000-416 | SCREW, 8-32 X 1 PAN HD PH | 1 | 52 | 3000-402 | SCREW, 10-32 X 3/8 TRUSS PH SS | 8 | |
| | 0100-402 | ROLL, ASM MIDDLE | 1 | 3000-300 | NUT, FLANGE 8-32 | 3 | 53 | 5000-225 | SWITCH, ELECTRONIC | 1 | |
| | 0100-408 | SHAFT, MIDDLE | 1 | 0500-231 | PLATE ECCENTRIC COMPLETE | 1 | 54 | 5000-261 | ORANGE WIRE NUT | 5 | |
| | 0100-457 | ROLL, SYNTHETIC/PIPE | 1 | 2000-629 | SWITCH PLATE ASSY | 1 | 55 | 5000-272 | CABLE TIE, 3M | 5 | |
| | 0100-403 | PIPE ROLL 11.11 | 1 | 2000-330 | PLATE, P.B. SWITCH | 1 | | | | | |
| | 0100-451 | ROLL, EIT 0003971VAR | 1 | 3010-205 | PEM, FHS-832-6 | 2 | | | | | |
| | 4000-100 | BEARING, R128S ROLL | 2 | 5000-202 | SWITCH POWER RED | 1 | | | | | |
| | 2000-412 | SPROCKET 41818H ROLL | 1 | 5000-203 | SWITCH POWER GREEN | 1 | | | | | |
| | 2000-316 | DISC MIDDLE COMPLETE | 1 | 0100-623 | COVER, ECCENTRIC | 1 | | | | | |
| | | | | 0500-421 | COVER, ECCENTRIC COMPLETE | 1 | | | | | |
| | | | | 2000-630 | SPROCKET 41811H IDLER W/BUSHING | 1 | | | | | |
| | | | | 2000-430 | SPROCKET 41811H IDLER | 1 | | | | | |

SOMERSET SOMERSET INDUSTRIES, INC.
 10100 ENCLOSURE
 1100 NORTH BELLEVUE, WA 98005
 TEL: 206-881-1100 FAX: 206-881-1101
 WWW.SOMERSET.COM

DATE: 01/00
 DRAWING NO: 0100-PART
 PART NO: 0100-PART
 SCALE: 1:1
 SHEET: 1 OF 1

APPROVED: [Signature]
 CHECKED: [Signature]
 DESIGNED: [Signature]
 DRAWN: [Signature]