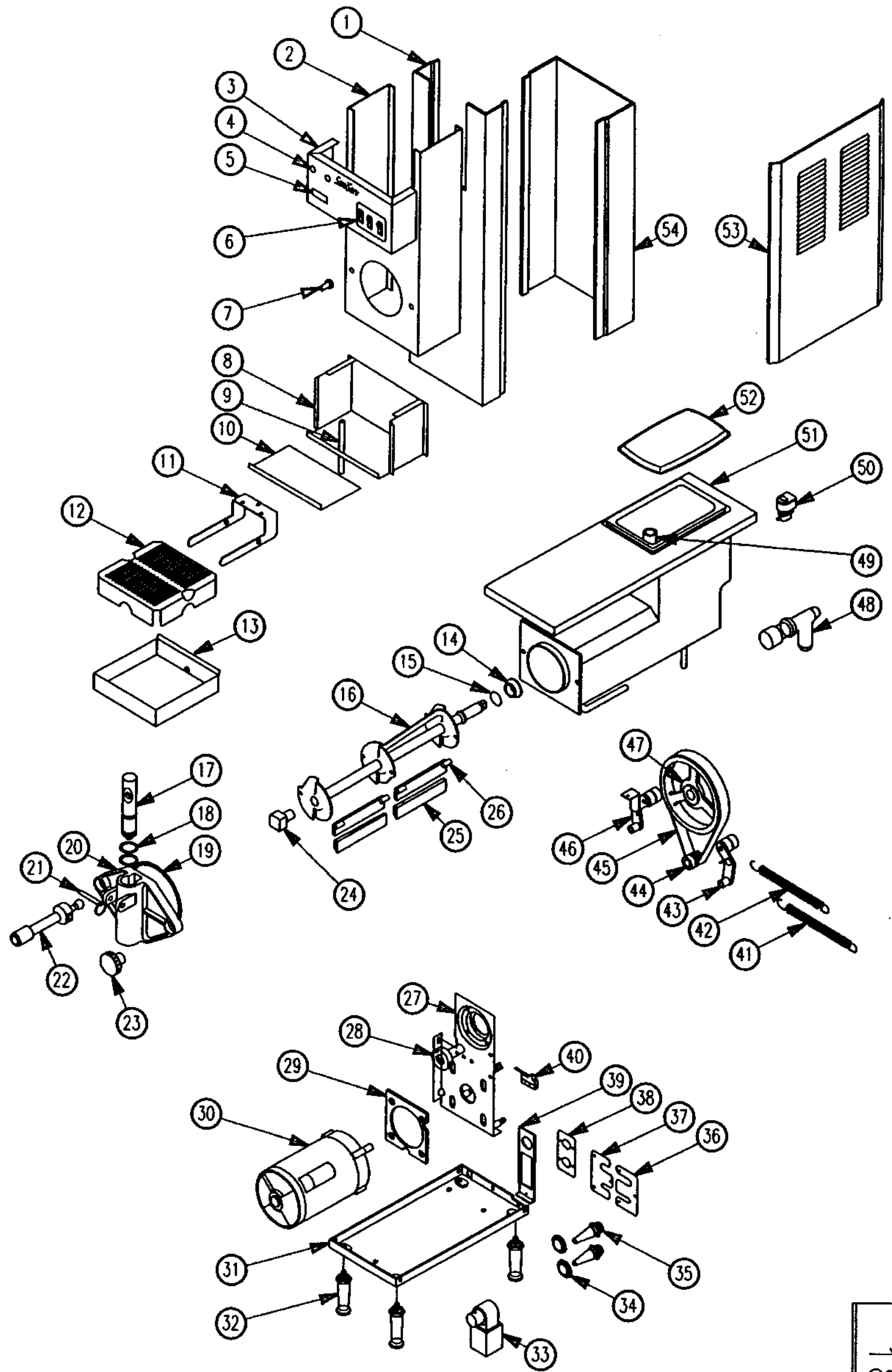


PARTS LIST  
(115V, 1PH, 60 Hz)  
WB7110RF

# Saniserv.Net

1. Front Panel . . . . . 108691
2. Upper Front Panel . . . . . 108715
3. Wiring Box Cover . . . . . 108696  
Logo . . . . . 16039
4. Product Ready Light . . . . . 61394  
Hole Plug . . . . . 61085
5. Syrup Light Out . . . . . 61395
6. Switch (3) . . . . . 70276  
Decal, Switch . . . . . 9584
7. Stud, Front Plate (2) . . . . . 7107
9. Cylinder Spilot Return . . . . . 77217  
Chromed Nut 1/16-18 . . . . . 77803
10. Bottom, Wrng Bx Cvr. . . . . 108695
11. Drip Tray Bracket . . . . . 108623
12. Drip Tray Insert . . . . . 108624
13. Drip Tray . . . . . 108620
14. Rear Seal . . . . . 108541
15. Dasher O-Ring . . . . . 58917
16. Dasher . . . . . 35537-02
17. Spigot Plunger . . . . . 105503
18. O-Ring, Spigot (2) . . . . . 58923
19. O-Ring, Front Plate . . . . . 58911
20. Front Plate . . . . . 65631-01
21. Pin, Spigot Handle . . . . . 64255
22. Handle, Spigot . . . . . 65632-01
23. Knob, Front Plate (2) . . . . . 64065
24. Front Bearing, Dasher . . . . . 107324
25. Scraper Blade (2) . . . . . 107803
26. Blade Holder (2) . . . . . 107807
27. Evaporator Support . . . . . 108584
28. Bearing & Shaft Assy. . . . . 2858
29. Motor, Mounting, Gasket . . . . . 102427  
Saddle, Motor Mounting . . . . . 104267
30. Dasher Motor . . . . . 75272
31. Base . . . . . 108689
32. Leg (4) . . . . . 64135
33. Solenoid Valve, Refrigeration . . . . . 71079  
Coil, Solenoid . . . . . 71078
34. Mounting Flange, Connector . . . . . 65641
35. 3/8" Male Connector . . . . . 65637  
5/8" Male Connector . . . . . 65638  
3/8" Female Connector . . . . . 65639  
5/8" Female Connector . . . . . 65640
36. Left Hand, Cover Bracket . . . . . 108626
37. Right Hand, Cover Bracket . . . . . 108627
38. Refrigeration, Line Bracket . . . . . 108729
39. Product Inlet Bracket . . . . . 108716
40. Micro Switch (2) . . . . . 70008  
Cover, Micro Switch (2) . . . . . 70068  
Switch Barrier/Drip Chute . . . . . 108730
41. Torque Spring . . . . . 64515
42. Idler Spring . . . . . 64515
43. Belt Idler . . . . . 103249
44. Drive Pulley . . . . . 10208
45. Belt . . . . . 58885
46. Torque Idler . . . . . 108731
47. Driven Pulley . . . . . 10615
48. Expansion Valve . . . . . 71151
49. Recirculating Tube . . . . . 107413
50. Solenoid, Product . . . . . 65682
51. Top Cover Assembly . . . . . 108698  
Drain Tube . . . . . 108732  
Drip Pan Inlet Tube . . . . . 104950
52. Mix Pan Lid . . . . . 65417
53. Side Panel (2) . . . . . 108700
54. Back Panel . . . . . 108690



ORIGINAL

180951

SaniServ	Model WB7110RF	BOM 7110-RF-02		E
	Description 115V, 1 PH, 60Hz	File 180951D.DWG		
Exploded View	Wiring Box 15795	ECN 1387	Date 4/14/00	E
	Wiring Dio. 81184-3	Sheet 1 of 1		