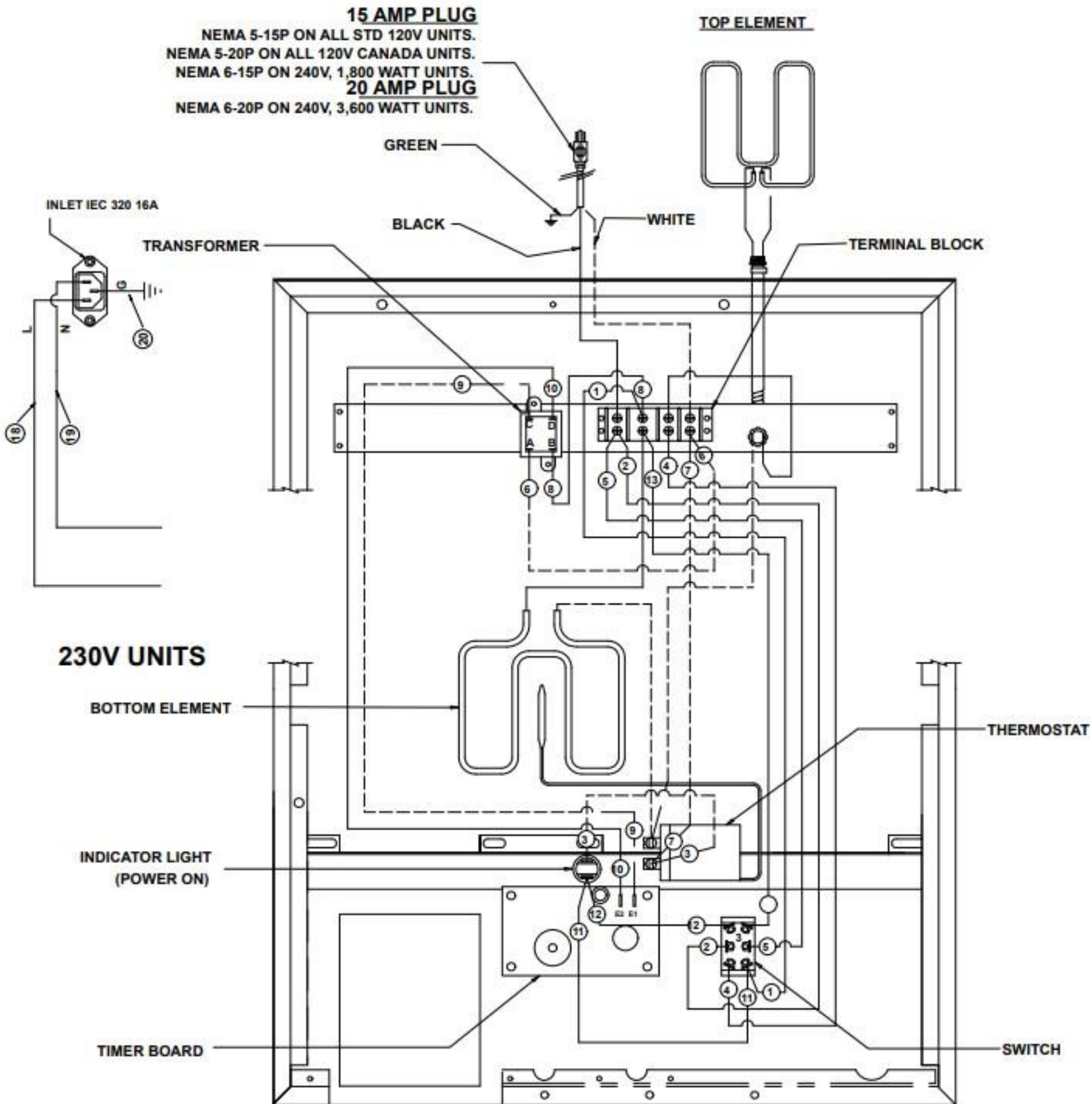


**15 AMP PLUG**

NEMA 5-15P ON ALL STD 120V UNITS.  
NEMA 5-20P ON ALL 120V CANADA UNITS.  
NEMA 6-15P ON 240V, 1,800 WATT UNITS.  
**20 AMP PLUG**

NEMA 6-20P ON 240V, 3,600 WATT UNITS.



**230V UNITS**

BOTTOM ELEMENT

THERMOSTAT

INDICATOR LIGHT  
(POWER ON)

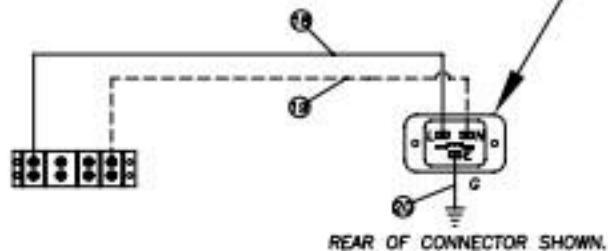
TIMER BOARD

SWITCH

FOR REFERENCE  
WIRING DIAGRAM IS SHOWN AS UNIT IS ASSEMBLED  
WITH THE BOTTOM PLATE REMOVED. ITEMS ARE IN  
GENERAL LOCATION BUT MAY BE RELOCATED OR SCALED  
FOR CLARITY.

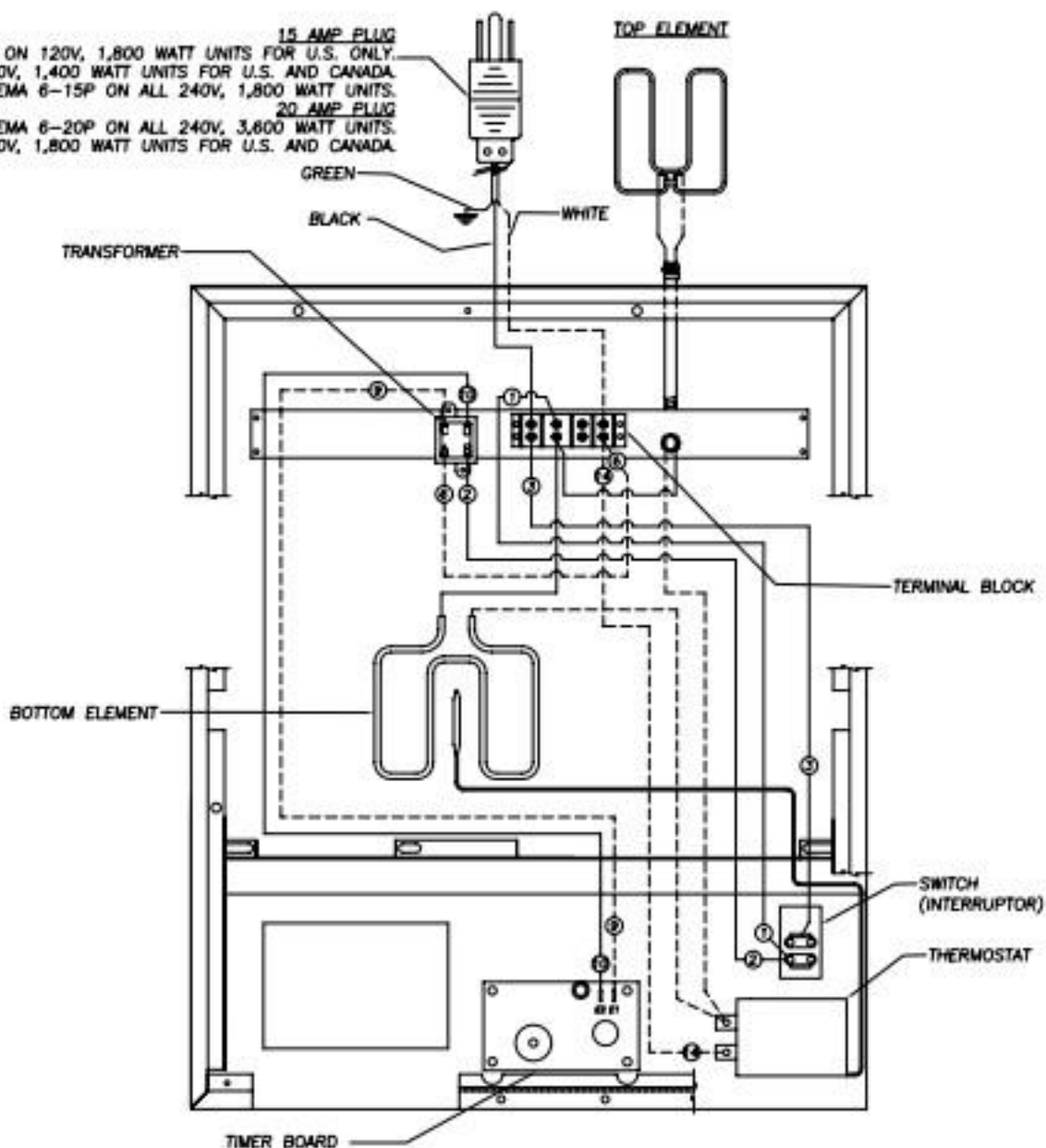
## UNITS WITH IEC CONNECTOR:

POWER INLET CONNECTOR:  
IEC 320 C-20 POWER INLET, ON ALL 208 - 240V UNITS.  
FOR USE WITH DETACHABLE CORDSETS SUPPLIED  
WITH A STRAIGHT, FEMALE, IEC 60320 C-19 CONNECTOR.



## NORTH AMERICA:

15 AMP PLUG  
NEMA 5-15P ON 120V, 1,800 WATT UNITS FOR U.S. ONLY.  
NEMA 5-15P ON 120V, 1,400 WATT UNITS FOR U.S. AND CANADA.  
NEMA 6-15P ON ALL 240V, 1,800 WATT UNITS.  
20 AMP PLUG  
NEMA 6-20P ON ALL 240V, 3,600 WATT UNITS.  
NEMA 5-20P ON 120V, 1,800 WATT UNITS FOR U.S. AND CANADA.



FOR REFERENCE  
WIRING DIAGRAM IS SHOWN AS UNIT IS ASSEMBLED  
WITH THE BOTTOM PLATE REMOVED. ITEMS ARE IN  
GENERAL LOCATION BUT MAY BE RELOCATED OR SCALED  
FOR CLARITY.