



## WENDY'S COMBO RANGE

*model* **STW286A**

# PARTS LIST

Toll Free Phone, (US & Canada): (800) 427-6668

Toll Free Fax, (US & Canada): (800) 361-7745

<http://www.Garland-Group.com>





## WENDY'S COMBO RANGE

*model* **STW286A**

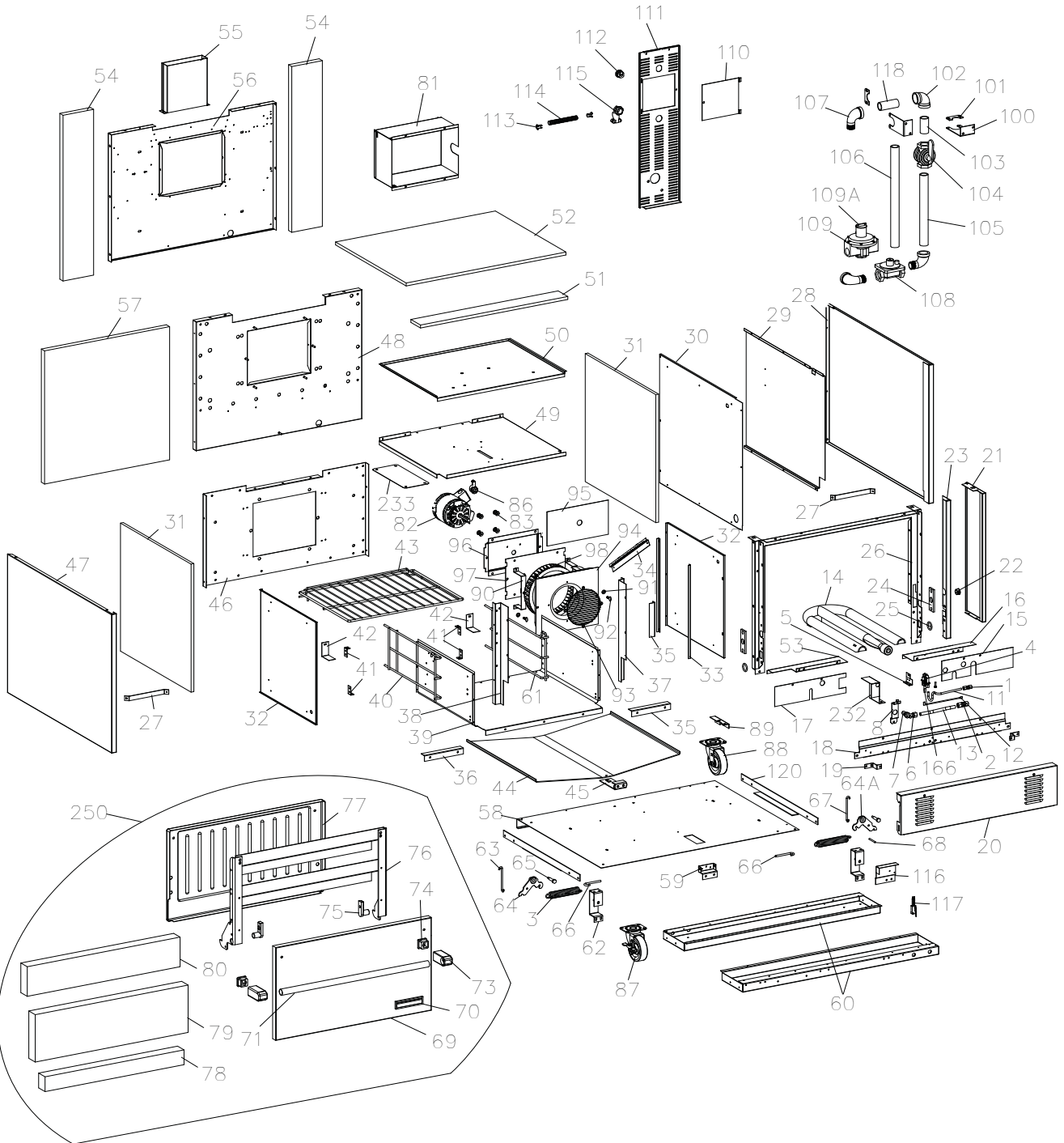
### ***Contents***

Wendy's Combo Range Components (Part 1) .....	4
Wendy's Combo Range Components (Part 2) .....	8
Related Bulletins .....	12
Revision History .....	13



**NOTE: Information on the First Unit Manufactured**

*date* **June 16, 2005**  
*model* **STW286A-0002**  
*serial#* **0506100124006**



**GARLAND PARTS IDENTIFICATION**  
**WENDY'S COMBO RANGE model STW286A**  
**COMPONENTS**

ITEM	PART #	DESCRIPTION	QTY	CRITICAL
1	076050-87	¼ Compression Union	1	
2	076050-88	7/16 Compression Union	1	
3	<b>1005800</b>	<b>Door Spring</b>	2	C
4	<b>2206513</b>	<b>Oven Spark Ignition Pilot NAT</b>	1	C
	<b>2206512</b>	<b>Oven Spark Ignition Pilot PRO</b>	1	C
5	4518183	Pilot Bracket, Oven	1	
6	22701XX	Oven Orifice Fitting	3	
7	M9-XX	Oven Orifice Hood (Specify Gas)	1	
8	2635100	Oven Orifice Support Bracket	1	
11	2624900	Tube ¼ - Oven Pilot to ¼ Compression Union	1	
12	<b>2642800</b>	<b>Sensor Wire</b>	3	C
13	2624800	Tube 7/16 - 7/16 Oven Orifice to Compression Union	1	
14	4518182	Oven Burner	1	
15	1390702	RH Roll Out Shield	1	
16	1391100	Roll Out Shield Support	1	
17	4518184	LH Roll Out Shield	1	
18	2512700	Lower Front Plate	1	
19	2628699	Kick Panel Bracket	2	
20	4517059	Kick Panel	1	
21	2622200	Front Support	1	
22	G01487-8	Heyco Bushing	1	
23	2604400	RH Door Filler	1	
24	<b>1083001</b>	<b>Trunion Support</b>	2	
25	1082700	Harness Ring	2	
26	<b>1730296</b>	<b>Front Frame Assy</b>	1	
27	2621300	Body Side Support	2	
28	2614100	Body Side R/H	1	
29	2642000	Wall Shield	1	
30	2604200	Inner Liner	1	
31	4527368	Insulation - 1/2" with foil	2	
32	3020000	Side Insulation Pan	2	
33	3019900	Flue Spacer Angle	6	
34	G02905-01-8E	Capillary Guard Assy	1	
35	1402400	Casing Support Angle	4	
37	1411302	Casing Support RH	1	
38	1411303	Casing Support LH	1	
39	3019701	Casing Bottom	1	
40	1311100	Rack Guide Assy - LH	1	
41	1356600	Rack Guide Clip	4	
42	1411700	Insulation Support	2	
43	2301200	Oven Rack	2	
	4519087	Divided Oven Rack	1	
44	1357702	Fire Plate	1	
45	1412098	Fire Plate Front Support Bracket Assembly	1	
46	3019601	Casing Back	1	
47	2614101	Body Side LH	1	
48	3014099	Main Back Insulation Pan Assy	1	
49	3019898	Casing Top	1	
50	3020199	Top Insulation Pan Assy	1	

\* NOT ILLUSTRATED

**RECOMMENDED STOCK PARTS**

**GARLAND PARTS IDENTIFICATION**  
**WENDY'S COMBO RANGE** *model STW286A*  
**COMPONENTS**

ITEM	PART #	DESCRIPTION	QTY	CRITICAL
51	4527370	Insulation - Oven Cavity Top Front	1	
52	<a href="#">4527369</a>	Insulation - Oven Cavity Top Rear	1	
53	<a href="#">2677600</a>	LH Roll Out Shield Support	1	
54	<a href="#">1472202</a>	Insulation - Oven Cavity Rear Sides	2	
55	<a href="#">2621199</a>	Flue Riser Assy	1	
56	<a href="#">3013900</a>	Main Back	1	
57	<a href="#">1472200</a>	Insulation - Cavity Back	1	
58	<a href="#">2620800</a>	Main Bottom	1	
59	<a href="#">2301300</a>	Door Spring Support	1	
60	<a href="#">2620900</a>	Main Bottom Support Channel	2	
61	<a href="#">1311101</a>	Rack Guide Assy - RH	1	
62	<a href="#">1386100</a>	Bell Crank Support	2	
63	<a href="#">1082803</a>	Oven Door Hinge Link LH	1	
64	<a href="#">1082198</a>	LH Bell Crank	1	
64A	<a href="#">1082199</a>	RH Bell Crank	1	
65	<a href="#">1082200</a>	Bell Crank Bolt	2	
66	<a href="#">9004701</a>	Oven Door Spring Hook	2	
67	<a href="#">1082802</a>	Oven Door Hinge Link RH	1	
68	<a href="#">G01503-16</a>	Weld Stud ¼-20 x 1.75	1	
69	<a href="#">1080723</a>	Oven Door Panel	1	
70	<a href="#">4529724</a>	Garland Nameplate	1	
70A*	F640	Pal Nut for Garland Nameplate	2	
71	<a href="#">3017000</a>	Handle	1	
72	<a href="#">4516836</a>	<b>Cooling Fan Assembly 120V</b>	1	C
	<a href="#">4517669</a>	<b>Cooling Fan Assembly 230V</b>	1	C
73	<a href="#">3007300</a>	Handle End	2	
74	<a href="#">3010000</a>	Handle End Plastic Insert	2	
75	<a href="#">1082500</a>	Oven Door Trunion	2	
76	<a href="#">G03984-06-8</a>	Oven Door Insert Assy	1	
77	<a href="#">1439796</a>	Oven Door Lining	1	
78	<a href="#">1472303</a>	Insulation - Oven Door Interior Lower Section	1	
79	<a href="#">1472301</a>	Insulation - Oven Door Interior Middle Section	1	
80	<a href="#">1472302</a>	Insulation - Oven Door Interior Upper Section	1	
81	<a href="#">2519799</a>	Motor Guard Assy	1	
82	<a href="#">2485801</a>	<b>Motor 115V</b>	1	C
	<a href="#">2485800</a>	<b>Motor 208/240V</b>	1	C
83	<a href="#">G01503-3</a>	Ohio Weld Nut ¼-20	8	
86	<a href="#">G01497-1</a>	BX Connector Straight	2	
87	<a href="#">4519840</a>	Caster, Swivel, Locking	2	
88	<a href="#">4519839</a>	Caster, Swivel	2	
89	<a href="#">1748701</a>	Restraint Attachment Bracket	1	
90	<a href="#">1361299</a>	Air Baffle Support Assy	2	
91	<a href="#">F542</a>	Aluminum Padded Washer	2	
92	<a href="#">F543</a>	Stainless Steel Wing Screw	2	
93	<a href="#">2520100</a>	Fan Protector Screen	1	
94	<a href="#">2395999</a>	Air Baffle Assy	1	
95	<a href="#">1669101</a>	Motor Pocket Insulation Board	1	
96	<a href="#">3013301</a>	Motor Mount Pocket	1	
97	<a href="#">3013401</a>	Motor Mount Plate	1	
98	<a href="#">G02952-01P</a>	<b>Blower Wheel</b>	1	C

\* NOT ILLUSTRATED

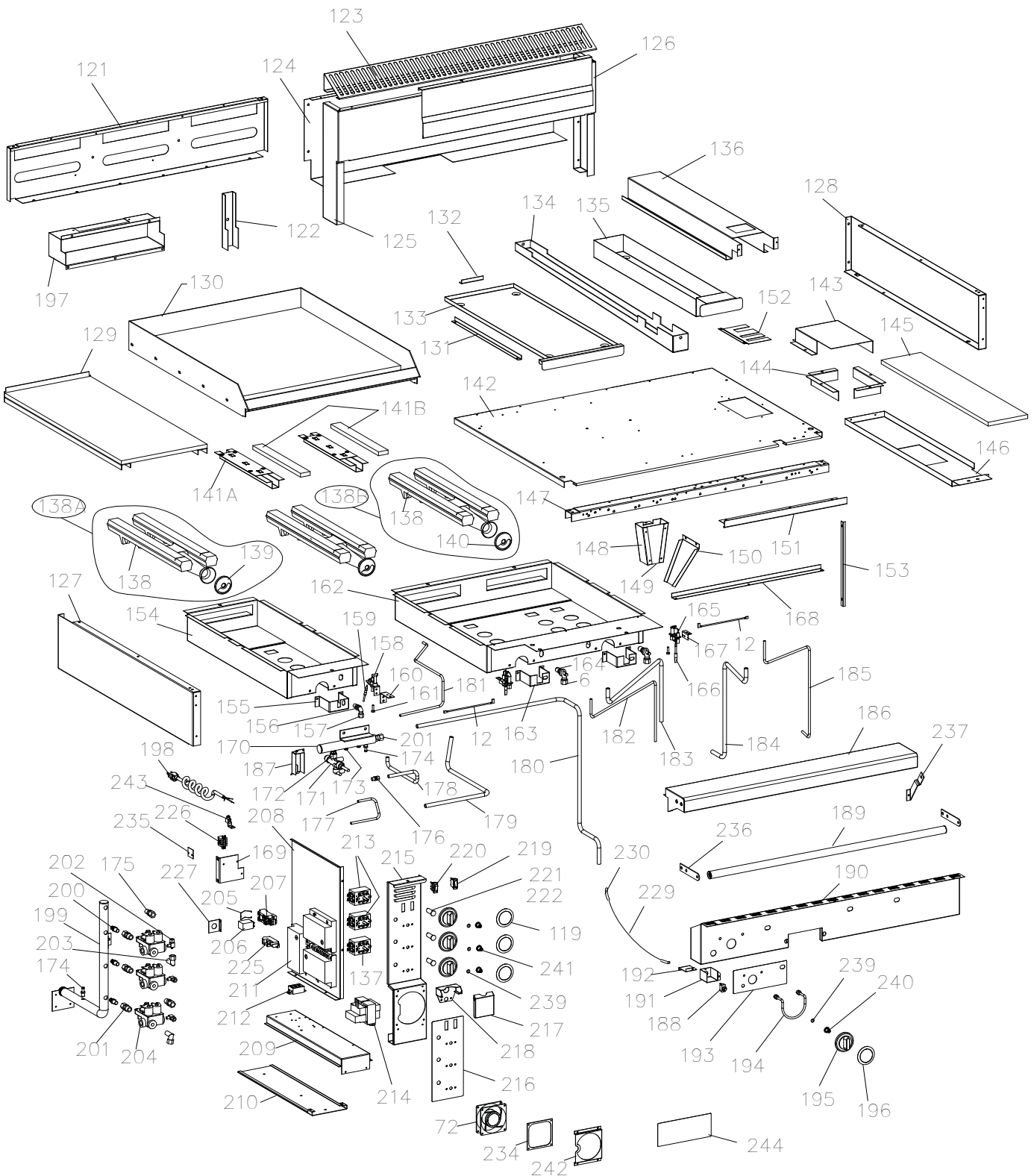
**RECOMMENDED STOCK PARTS**

**GARLAND PARTS IDENTIFICATION**  
**WENDY'S COMBO RANGE model STW286A**  
**COMPONENTS**

ITEM	PART #	DESCRIPTION	QTY	CRITICAL
100	2640700	Manifold Support Bracket	2	
101	2640800	Manifold Support Clamp	2	
102	G01474-5	¾" NPT Elbow	1	
103	G01738-14	Nipple 3/4" NPT X 2" (Domestic Model)	1	
104	G01518-1	Valve-Swing Type Shut Off Gas (Domestic Model)	1	
105	G01738-9	Nipple 3/4" NPT X 9.5" (Domestic Model)	1	
106	G01738-13	Nipple 3/4" NPT X 13.5" (Export Model)	1	
107	G01475-2	3/4" NPT 90 Deg. Street Elbow	3	
108	<b>2127502</b>	<b>Gas Regulator (NAT) (Domestic Model)</b>	1	C
	<b>2127500</b>	<b>Gas Regulator (PRO) (Domestic Model)</b>	1	C
109	2525200	Jeavons Regulator (NAT) (Export Model)	1	C
109A	2525300*	Regulator Spring (PRO)	1	
110	2622400	Wiring Access Cover	1	
111	4517369	Control Compartment Back	1	
112	2490500	Straight Thru Relief Bushing (Domestic Model)	1	
113	1029600	Antishorts	2	
114	1029400	3/8" BX Cable	1	
115	1028500	BX Connector - 90 Deg.	2	
116	4517402	Door Switch Bracket/Heat Shield	1	
117	<b>2628000</b>	<b>Door Switch</b>	1	C
117A	3096100*	Door Switch Wiring Harness	1	
118	G01738-4	Nipple 2.5"	1	
119	<b>2621400</b>	<b>Oven/Griddle Dial Insert Fahrenheit</b>	3	
	<b>2621401</b>	<b>Oven/Griddle Dial Insert Celsius</b>	3	
120	2620700	Lifting Angle	2	
121	2615900	Burner Box Back	1	
122	1414600	Burner Box Back Support	1	
123	2374301	Backguard Top 36"	1	
124	2614200	Backguard Back	1	
125	2374101	Backguard Front	1	
126	2629400	Griddle Splash Shield	1	
127	2614398	Burner Box Side Assy LH	1	
128	2614399	Burner Box Side Assy RH	1	
129	2604799	Hot Top Assy	1	
130	4517072	Griddle Assy	1	
131	2616100	Drip Tray Guide	1	
132	2616000	Drip Tray Stop	1	
133	4516888	Drip Tray	1	
134	2618000	Grease Trough	1	
135	4517076	Grease Drawer Assy	1	
136	4516887	Grease Sleeve	1	
137	<b>4517610</b>	<b>Thermostat - Oven</b>	1	C
138	1014900	Cast Iron H-Burner	3	
138A	4525462	Burner Fully Ported w/Shutter Small	1	
138B	4525461	Burner Fully Ported w/Shutter Large	2	
139	1028002	Air Shutter (Hot Top Burner) - Used w/M8 Hoods (item 156)	1	

\* NOT ILLUSTRATED

**RECOMMENDED STOCK PARTS**



**GARLAND PARTS IDENTIFICATION**  
**WENDY'S COMBO RANGE model STW286A**  
**COMPONENTS**

ITEM	PART #	DESCRIPTION	QTY	CRITICAL
140	2512100	Air Shutter (Griddle Burner) - use with M9 Hoods (item 164 & 7)	2	
141A	4523469	Bulb Clamp Assembly with Insulation (Includes Item 141B) <b>NOTE:</b> Implemented From Date Nov 22, 2007 / Serial# 0711100176562	2	
141B	1472324	Insulation 2" x 16" x 1-1/4" (Bulb not included)	2	
142	2614500	Burner Box Bottom	1	
143	4517373	Heat Shield-Tubing	1	
144	2619400	Insulation Shield	2	
145	2642100	Control Compartment Top Insulation	1	
146	2608100	Insulation Retainer	1	
147	1085000	Burner Box Front Channel 36"	1	
148	4517408	Grease Chute Front	1	
149	4522121	Grease Chute Rear	1	
150	2618100	Grease Deflector	1	
151	4516890	False Handle	1	
152	4516884	Heat Shield - Upper Tubing	1	
153	2615700	Panel Stop	1	
154	2614698	Hot Top Burner Box Assy	1	
155	2617500	Orifice Support Hot Top	1	
156	M8-XX	Orifice Hood - Hot Top (Specify Gas)	1	
157	G02486-00	Orifice Fitting less Hood (Hot Top)	1	
158	2200700	SIT Pilot RH	1	
158A	2200704	3/16" Comp Nut	1	
158B	2200705	Olive Ball Sleeve	1	
158C	2200706	Nut Thermo Retaining	1	
158D	2200707	<b>Nut Electrode</b>	1	C
158E	2200708	<b>Electrode</b>	1	C
159	2200600	<b>18" Thermocouple - Hot Top</b>	1	C
160	2614900	Bracket - Hot Top Pilot	1	
161	2200702	Orifice - Hot Top Pilot #32 (NAT)	1	
	2200703	Orifice - Hot Top Pilot #23 (PRO)	1	
162	4516665	Griddle Burner Box Assy	1	
163	2617400	Orifice Support -Griddle	2	
164	M9-XX	Orifice Hood - Griddle (Specify Gas)	2	
165	2206514	<b>Griddle Spark Ignition Pilot (PRO)</b>	2	C
	2206515	<b>Griddle Spark Ignition Pilot (NAT)</b>	2	C
166	1466100	<b>Flame Sensor</b>	3	C
167	2614800	Griddle Pilot Bracket	2	
168	4517038	Heat Shield - Griddle Burner Box	1	
169	2617000	Main Manifold Retainer Bracket	1	
170	2612399	Sub-Manifold Assembly	1	
171	2200199	Valve (Hot Top)	1	
172	2198102	Valve Connector Fitting 10mm	1	
173	2203400	1/8" NPT Plug	2	
174	G02251-1	Pressure Test Spigot	2	
175	G01243-1	Fitting 68-7B	1	
176	1086597	Gum Valve - 3/16" Pilot	1	
177	4517599	Tube (1/4") - Hot Top Valve to Hot Top Orifice Fitting	1	
178	2625000	Tube (3/16") - Hot Top Valve to Hot Top Pilot	1	
179	2624700	Tube (7/16") -Oven Solenoid Valve to 7/16 Compression Coupling	1	

\* NOT ILLUSTRATED

**RECOMMENDED STOCK PARTS**

**GARLAND PARTS IDENTIFICATION**  
**WENDY'S COMBO RANGE model STW286A**  
**COMPONENTS**

ITEM	PART #	DESCRIPTION	QTY	CRITICAL
180	<a href="#">2619100</a>	Tube (7/16") –Manifold to Sub Manifold	1	
181	<a href="#">2624600</a>	Tube (¼") -Oven Solenoid Valve to (¼) Compression Coupling	1	
182	4517601	Tube (¼") –Solenoid Valve to Griddle Pilot LH	1	
183	4517602	Tube (7/16") –Solenoid Valve to Griddle Burner Orifice LH	1	
184	4517603	Tube (7/16") –Solenoid Valve to Griddle Burner Orifice RH	1	
185	4517600	Tube (¼") –Solenoid Valve to Griddle Pilot RH	1	
186	<a href="#">4517062</a>	Front Rail	1	
187	4517039	Heat Shield - Hot Top Valve	1	
188	<a href="#">G03053-1</a>	Momentary Pushbutton Switch <b>NOTE:</b> Use Service Kit <a href="#">4530075</a> .	1	
	<a href="#">4530075</a>	<b>Kit - Momentary Switch</b> <b>NOTE:</b> Kit includes a momentary switch, insulators, terminal tabs, and installation instructions. See Bulletin# <b>GAR-05-11-AIC</b> .	1	C
188A	<a href="#">3064800*</a>	Decorative Dress Nut APEM#A540	1	
189	<a href="#">4516937</a>	Handle Assy	1	
190	<a href="#">4517048</a>	Valve Panel	1	
191	<a href="#">4517416</a>	Switch Box	1	
192	<a href="#">4517417</a>	Switch Box Cover	1	
193	<a href="#">4517061</a>	Hot Top Overlay	1	
194	<a href="#">G0728-1-9</a>	Thermostat Guard	1	
195	<a href="#">3043100</a>	<b>Valve Knob</b>	4	C
196	<a href="#">2310000</a>	Dial Insert (Hot Top)	1	
197	<a href="#">2615802</a>	Flue Box	1	
198	<a href="#">2642200</a>	Coiled Cord (Domestic Model)	1	
199	<a href="#">2612299</a>	Main Manifold	1	
200	<a href="#">2621500</a>	Valve Connector Fitting (7/16")	3	
201	<a href="#">1095499</a>	3/8 NPT to 7/16 Comp Fitting	5	
202	<a href="#">G03674-3</a>	Valve -Pilot ¼" Angle 90Deg	3	
203	<a href="#">G02352-1</a>	Elbow 3/8 NPT to 7/16cc Male	2	
204	<a href="#">2619500</a>	<b>Solenoid Valve 24v</b>	3	C
205	<a href="#">2475700</a>	Relay Clip	1	
206	<a href="#">2672200</a>	<b>Relay</b>	1	C
207	<a href="#">2475600</a>	Relay Base	1	
208	<a href="#">2617300</a>	Component Side Support	1	
209	<a href="#">2613300</a>	Component Support	1	
210	<a href="#">2613400</a>	Component Slide	1	
211A	<a href="#">2619600</a>	<b>Pilot Ignition Control Module 24V (Robertshaw)</b> <b>NOTE:</b> Used UP TO 4-OCT-2005.	3	C
211B	<a href="#">4517608</a>	<b>Pilot Ignition Control Module (Johnson)</b> <b>NOTE:</b> Used FROM serial# 0510100130790 (STW286A-0002) and UPTO serial# 0903100100822. <b>NOTE:</b> A unit manufactured between 5-OCT-2005 to 23-MAR-2009 with a Johnson Ignition Control will require <b>Service Kit 4526834 (Johnson to Robertshaw Ignition Control Conversion Kit)</b> .	3	C
211C	<a href="#">2619600</a>	<b>Pilot Ignition Control Module 24V (Robertshaw)</b> <b>NOTE:</b> Used FROM serial# 0903100100823 (STW286A - 0009)	3	C
212	<a href="#">2573000</a>	Terminal Block 3 Circuit	2	

\* NOT ILLUSTRATED

**RECOMMENDED STOCK PARTS**

**GARLAND PARTS IDENTIFICATION**  
**WENDY'S COMBO RANGE *model* STW286A**  
**COMPONENTS**

ITEM	PART #	DESCRIPTION	QTY	CRITICAL
213	<a href="#">4517609</a>	<i>Thermostat - Griddle</i>	2	C
214	<a href="#">2652401</a>	<i>75VA Transformer (120V)</i>	1	C
	<a href="#">2652402</a>	<i>75VA Transformer (208/240V)</i>	1	C
215	4516857	Control Panel	1	
216	<a href="#">4517060</a>	Overlay - Control Panel	1	
217	<a href="#">2629000</a>	Oven Control Cover	1	
218	<a href="#">2628700</a>	Oven Control Cover Support	1	
219	<a href="#">2630200</a>	<i>Switch SPDT ON-OFF-ON</i>	1	C
220	<a href="#">2146800</a>	<i>Illuminated Power Switch</i>	1	C
221	<a href="#">2667200</a>	Pilot Assy Amber	3	
222	4517756*	Extra 7/16" c.c. Hardware	1	
225	<a href="#">4514749</a>	<i>Spark Generator - 230V, 4 outlet (For Top Section)</i>	1	C
	<a href="#">4514750</a>	<i>Spark Generator - 120V, 4 outlet (For Top Section)</i>	1	C
226	<a href="#">3050401</a>	Terminal Block (230V)	1	
227	4517052	BX-Connector Retainer	1	
229	G03883R	Thermoflex Insulating Sleeve	1	
230	<a href="#">2200203</a>	<i>High Tension Wire Lead 64"</i>	1	C
232	<a href="#">4520038</a>	Oven Pilot Shield	1	
233	4520028	Vent Cover	1	
234	<a href="#">4516839</a>	Exhaust Fan Filter	1	
235	4517051	Capillary Heat Shield	1	
236	<a href="#">4516938</a>	Handle End	2	
237	<a href="#">4517424</a>	Front Rail Support Bracket - RH	1	
239	<a href="#">3043300</a>	Spring Retainer	4	
240	<a href="#">3043202</a>	Hot Top Valve Knob Hub	1	
241	<a href="#">3043207</a>	Griddle/Oven Valve Knob Hub	3	
242	4520024	Filter Cover	1	
243	<a href="#">G01500-1</a>	Ground Terminal (230V)	1	
244	4520454	Label Filter Replacement	1	
245*	<a href="#">2667000</a>	Lighting / Shut-Down Instruction Label	1	
<b>STW286A RELATED KITS</b>				
250	<a href="#">CK137A</a>	Complete Door Assembly (Round) Kit includes items 69, 70, 71, 73, 74, 75, 76, 77, 78, 79, & 80.	1	
251*	<a href="#">4529734</a>	Conversion Kit (for Natural Gas Unit Only) to Increase oven BTU to 38,000. See Bulletin# <b>GAR-03-11-A</b> .	1	

\* NOT ILLUSTRATED  
**RECOMMENDED STOCK PARTS**

**GARLAND PARTS IDENTIFICATION**  
**WENDY'S COMBO RANGE *model* STW286A**

**RELATED BULLETINS**

<b>BULLETIN #</b>	<b>SUBJECT</b>	<b>DATE</b>
GAR-03-11-A	Wendy's Range, Kit to increase oven BTU.	May 13, 2011
GAR-05-11-AIC	Service Kit for Momentary Switch Part# <a href="#">4527834</a> & <a href="#">G03053-1</a>	September 13, 2011

**GARLAND PARTS IDENTIFICATION**  
**WENDY'S COMBO RANGE model STW286A**

**REVISION HISTORY**

REV.	PAGE#	ITEM#	NOTES	DATE
0			New part list released	June 28/05
1	8,11	244	New part number added	Aug 25/05
2	4,5	4A	Item# deleted	Oct 17/05
	8,9	165A	Item# deleted	
	10	194	Part number correction - was G0728-1-8	
		211A	Description changed & up to date added	
		211B	New part number added	
11	245	New part number added - not shown		
3	10	211A, 211B	Description changed	March 27/06
		225		
4	4		Drawing updated - Item 250 added	May 26/06
	6	69	Part number changed - was 1439901	
		76	Part number changed - was <a href="#">G03984-03-8</a>	
	11	250	Complete Door Kit Added	
5	9	149	Part # changed - was # <a href="#">4517409</a> (Grease Chute Rear)	Jan 22/07
6	7	135	Part # changed - was # <a href="#">4516885</a>	Feb 21/07
7	9	141	Part # changed - was <a href="#">4517190</a> (Bulb Clamp/Shield Assy)	Nov 27/07
		141A	New part number added	
		141B		
			Critical column added	
8	10	211C	New part number added	June 1/09
9	8		New Drawing	Aug 6/09
	7	138A,138B	New part number added	
	7,9	139, 140	Description changed	
10	10	211A,211B	Note deleted - was (For Oven Section)	Sept 28/09
11	10	188	Momentary Switch Kit <a href="#">4530075</a> replaces part <a href="#">G03053-1</a> (Momentary Switch).	Oct 13/11
	6	70, 70A	New Garland Nameplate <a href="#">4529724</a> and fasteners F640 replace old design <a href="#">3077100</a> and fasteners F95.	
	5	35, 36	Qty of Casing Support Angle <a href="#">1402400</a> changed from 2 to 4. Item 36 is no longer needed (Fire Plate Rear Support <a href="#">1325900</a> ).	
	11	251	Added Kit <a href="#">4529734</a> (BTU conversion kit) and related bulletin#.	
12	5, 6	31, 51, 52	New insulation parts replaced the old ones: <a href="#">4527368</a> replaced <a href="#">1309021</a> ; <a href="#">4527370</a> replaced <a href="#">1309025</a> ; <a href="#">4527369</a> replaced <a href="#">1309022</a> .	Nov 21/11

 **Garland**<sup>®</sup>

 **Manitowoc**