



T&S BRASS AND BRONZE WORKS, INC.

2 Saddleback Cove / P.O. Box 1088
Travelers Rest, SC 29690

Model No.

EC-3122-HG

Item No.

Travelers Rest, SC: 800-476-4103 • Simi Valley, CA: 800-423-0150 • Fax: 864-834-3518 • www.tsbrass.com



ADA Compliant



This Space for Architect/Engineer Approval

Job Name _____ Date _____

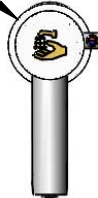
Model Specified _____ Quantity _____

Customer/Wholesaler _____

Contractor _____

Architect/Engineer _____

Ø 2 9/16"
[65mm]



Optional DC Power
w/ 4 "AA" Batteries
Inside Housing

Internal Above
Deck Electronics
w/ Flow Control
Setting Switches

19" [486mm] Long
Flexible Stainless
Steel Supply Hoses w/
1/2" Swivel Ends & Filter
Washers



2.2 GPM [8.3 L/min]
Vandal Resistant
Aerator

Temperature
Mixing Handle

Mounting
Surface

4 5/16"
[109mm]

5 3/4"
[146mm]

8 5/16"
[211mm]

Cold Hot

1 1/2"
[38mm]
Maximum
Thickness

Connection to
Power Supply



Check Valve Adapters
w/ 3/8" Compression
(9/16-24 UN) Inlets &
Check Valves

100-240 VAC Adapter
w/ 144" [3658mm] Long
Power Cord & 2 Terminal
Plugs (Included)

Hydro-Generator
Power Supply.
No "AA" Batteries or
AC Adapter Needed
to Supply Power to
Faucet

Connect Cold Supply Line
Check Valve Adapter to
Hydro-Generator
1/2" NPSM Swivel

Rough-In Requirement:
Ø 1 1/2" [38mm] Hole

Product Specifications:

Chrome Plated Brass Above Deck Electronics Faucet, Single Hole Deck Mount, 2.2 GPM VR Aerator, Above Deck Temperature Control, Hydro-Generator Powered, Stainless Steel Flexible Supply Hoses & 3/8" Compression Inlets

Product Compliance:

ASME A112.18.1 / CSA B125.1
NSF 61 - Section 9
NSF 372 (Low Lead Content)
ANSI A117.1 (ADA)
UL 1951



T&S BRASS AND BRONZE WORKS, INC.

2 Saddleback Cove / P.O. Box 1088
Travelers Rest, SC 29690

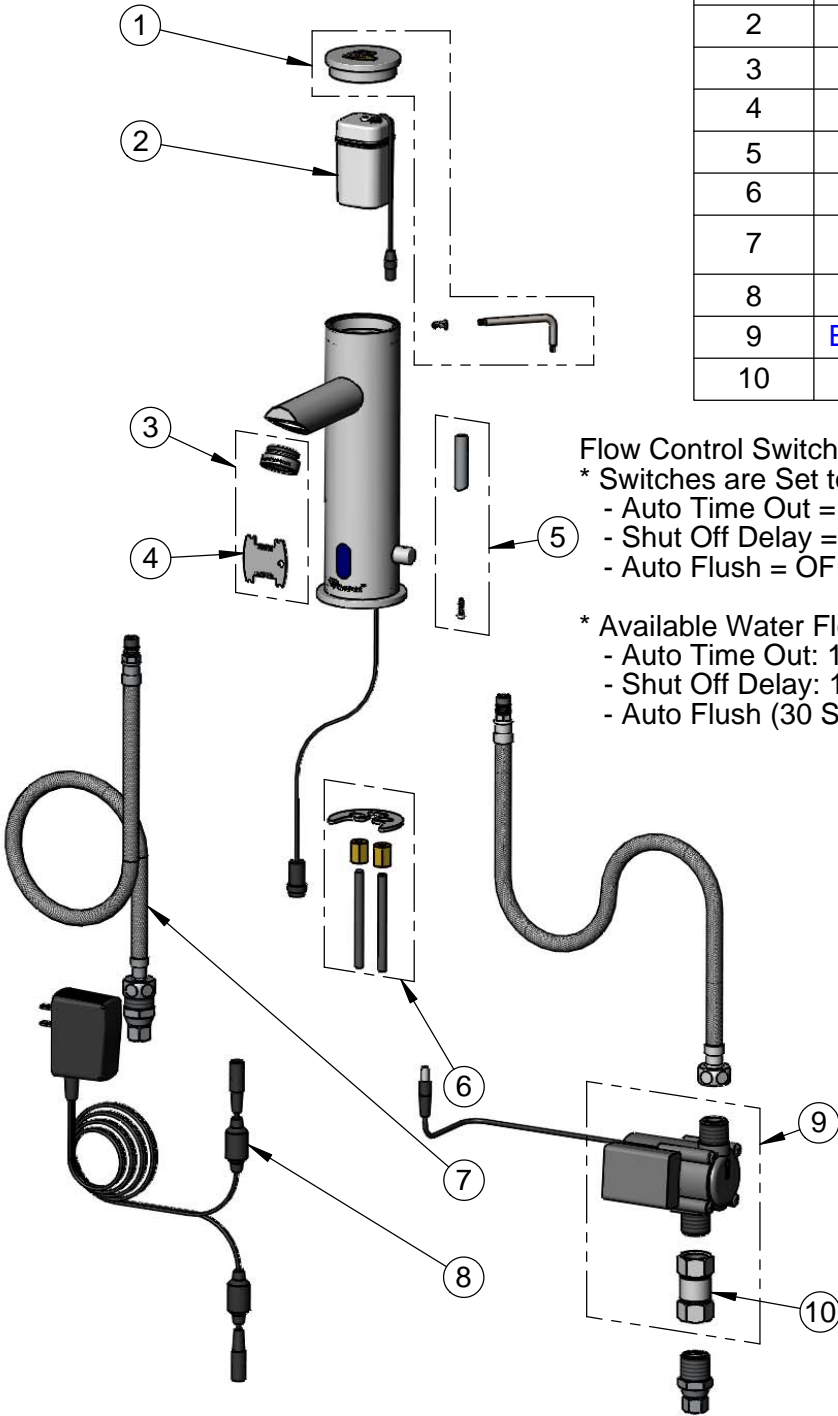
Model No.

EC-3122-HG

Item No.

Travelers Rest, SC: 800-476-4103 • Simi Valley, CA: 800-423-0150 • Fax: 864-834-3518 • www.tsbrass.com

ITEM NO.	SALES NO.	DESCRIPTION
1	018160-40	Cap, Screw & Wrench Kit
2	018227-45	Battery Holder
3	B-0199-09	2.2 GPM VR Aerator
4	015425-45	Vandal Resistant Key
5	018230-45	Lever Handle w/ Screw
6	018233-45	Mounting Hardware Kit
7	018232-45	Flex Hose w/ Filter Washer & Check Valve Adapter Asm.
8	5EF-0002	AC Transformer
9	EC-HYDROGEN	HydroGenerator Power Supply
10	017506-45	1/2" NPSM Swivel Coupling



Flow Control Switches are Located Beneath the Cap.

* Switches are Set to DEFAULT Position:

- Auto Time Out = 15 Seconds
- Shut Off Delay = 1 Second
- Auto Flush = OFF

* Available Water Flow Control Selections:

- Auto Time Out: 15 sec, 30 sec, 45 sec, 60 sec, 3 min, 20 min
- Shut Off Delay: 1 sec, 10 sec, 15 sec, 30 sec
- Auto Flush (30 Seconds After Every 12 Inactive Hours): ON or OFF

Product Specifications:

Chrome Plated Brass Above Deck Electronics Faucet, Single Hole Deck Mount, 2.2 GPM VR Aerator, Above Deck Temperature Control, Hydro-Generator Powered, Stainless Steel Flexible Supply Hoses & 3/8" Compression Inlets

Product Compliance:

ASME A112.18.1 / CSA B125.1
NSF 61 - Section 9
NSF 372 (Low Lead Content)
ANSI A117.1 (ADA)
UL 1951