



**T&S BRASS AND BRONZE WORKS, INC.**  
 2 Saddleback Cove / P.O. Box 1088  
 Travelers Rest, SC 29690

Model No.  
**EC-3130-HG**

Item No.

Travelers Rest, SC: 800-476-4103 • Simi Valley, CA: 800-423-0150 • Fax: 864-834-3518 • www.tsbrass.com

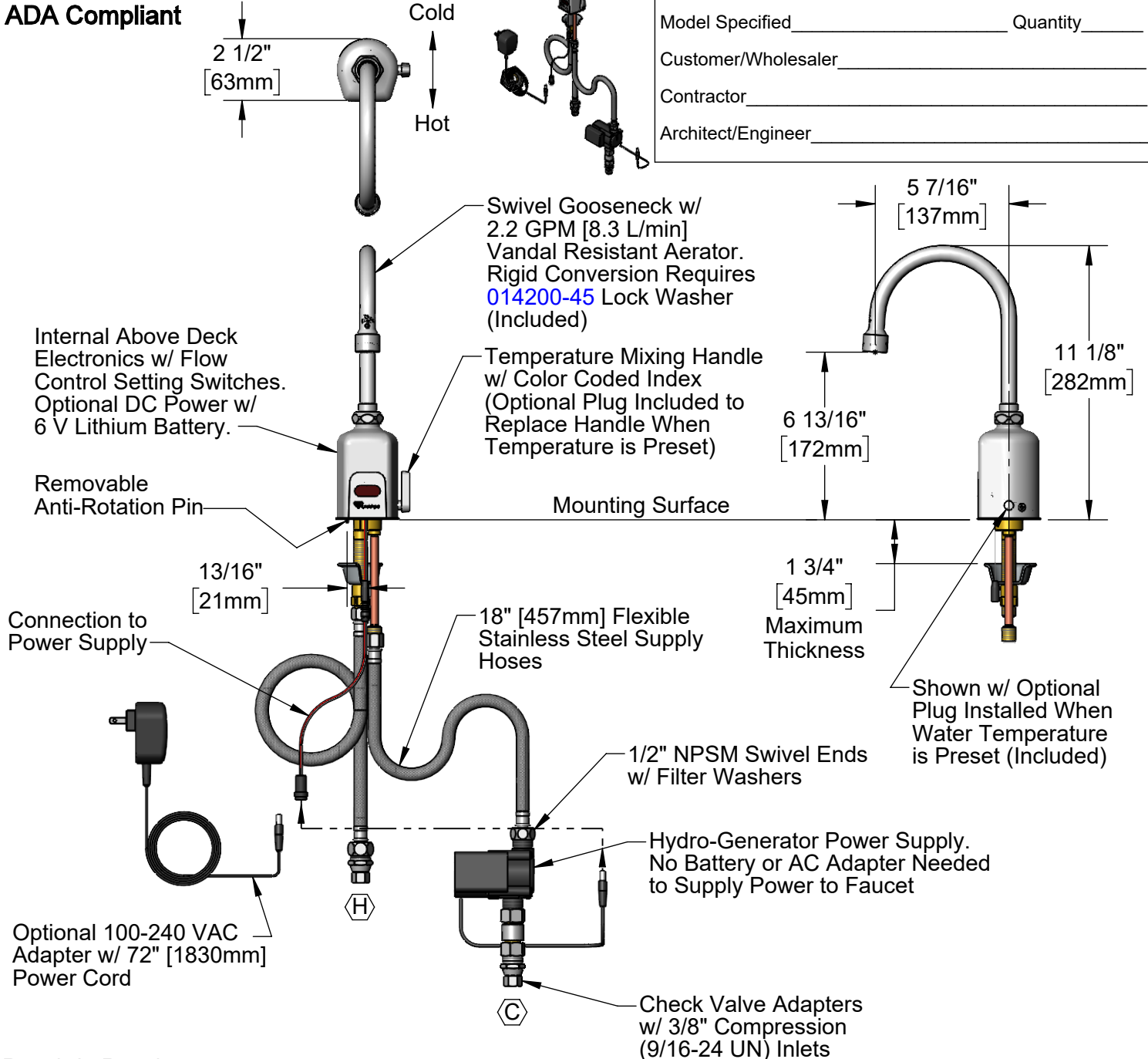


**ADA Compliant**



This Space for Architect/Engineer Approval

Job Name \_\_\_\_\_ Date \_\_\_\_\_  
 Model Specified \_\_\_\_\_ Quantity \_\_\_\_\_  
 Customer/Wholesaler \_\_\_\_\_  
 Contractor \_\_\_\_\_  
 Architect/Engineer \_\_\_\_\_



**Rough-In Requirement:**  
 Ø 1 1/4" [32mm] Mounting Hole  
 Ø 3/16" [5mm] Anti-Rotation Pin Hole (Optional)

**Product Specifications:**  
 Chrome Plated Brass Above Deck Electronics Faucet, Single Hole Deck Mount, Swivel/Rigid Gooseneck, 2.2 GPM VR Aerator, Point-of-Use Temperature Control, Hydro-Generator Powered, Stainless Steel Flexible Supply Hoses & 3/8" Compression Inlets

**Product Compliance:**  
 ASME A112.18.1 / CSA B125.1  
 NSF 61 - Section 9  
 NSF 372 (Low Lead Content)  
 ANSI A117.1 (ADA)  
 UL 1951



# T&S BRASS AND BRONZE WORKS, INC.

2 Saddleback Cove / P.O. Box 1088  
Travelers Rest, SC 29690

Model No.

**EC-3130-HG**

Item No.

Travelers Rest, SC: 800-476-4103 • Simi Valley, CA: 800-423-0150 • Fax: 864-834-3518 • www.tsbrass.com

ITEM NO.	SALES NO.	DESCRIPTION
1	018590-40	Swivel Gooseneck w/ VR 2.2 GPM Aerator w/ Key
2	<a href="#">B-0199-06</a>	VR 2.2 GPM Aerator, 55/64-27 Female w/ Key
3	<a href="#">009538-45</a>	Swivel Washer
4	<a href="#">011429-45</a>	Swivel Sleeves (2)
5	<a href="#">001074-45</a>	O-Ring
6	<a href="#">014200-45</a>	Star Washer, Anti-Rotation
7	<a href="#">020330-45</a>	Solenoid Valve, M22 x 2 Male Thd
8	020417-45	Aux. Power Connector Cable
9	<a href="#">5EF-0002C</a>	AC Adapter - US Plug
10	<a href="#">018544-45</a>	SS Flex Hose w/ Check Valve Adapter
11	<a href="#">019087-45</a>	6VDC Lithium Battery, CR-P2
12	020270-45	Lever Asm & Body Screw Kit w/ L-Key
13	<a href="#">5EF-0005</a>	Supply Hose, 9/16-24 Female x 1/2" NPSM
14	<a href="#">EC-HYDROGEN</a>	HydroGenerator Power Supply
15	<a href="#">017506-45</a>	Swivel Coupling Body
16	<a href="#">019564-45</a>	Check Valve Adapter, 3/8" Comp.
17	020426-40	Body Plug, Pre-Set Temperature

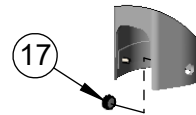
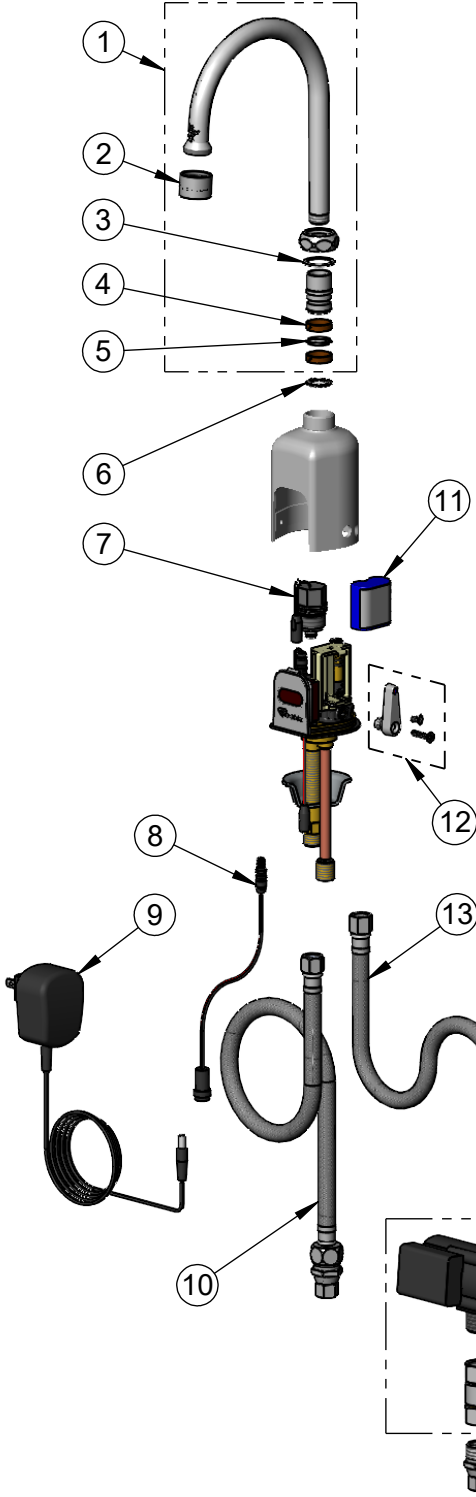
\* For Versions Prior to 2024, Consult with T&S Customer Service

Flow Control Switches are Located Behind the Sensor. Switches are set to DEFAULT position:

- Auto Time Out = 15 seconds
- Shut Off Delay = 1 second
- Auto Flush = OFF
- Metering Mode = OFF

Available Water Flow Control Selections:

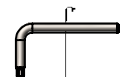
- Auto Time Out: 15 sec, 30 sec, 45 sec, 60 sec, 3 min, 20 min
- Shut Off Delay: 1 sec, 10 sec, 15 sec, 30 sec
- Auto Flush (30 Seconds After Every 12 Inactive Hours): ON or OFF
- Metering Mode = ON or OFF



Optional Plug When Pre-setting Temperature (Installs from Inside of Body)



[015425-45](#)  
VR Aerator Key



[018543-45](#)  
Torx T-20 VR L-Key



[020760-45](#)  
Sensor Range Set-Up Magnet

**Product Specifications:**

Chrome Plated Brass Above Deck Electronics Faucet, Single Hole Deck Mount, Swivel/Rigid Gooseneck, 2.2 GPM VR Aerator, Point-of-Use Temperature Control, Hydro-Generator Powered, Stainless Steel Flexible Supply Hoses & 3/8" Compression Inlets

**Product Compliance:**

ASME A112.18.1 / CSA B125.1  
NSF 61 - Section 9  
NSF 372 (Low Lead Content)  
ANSI A117.1 (ADA)  
UL 1951