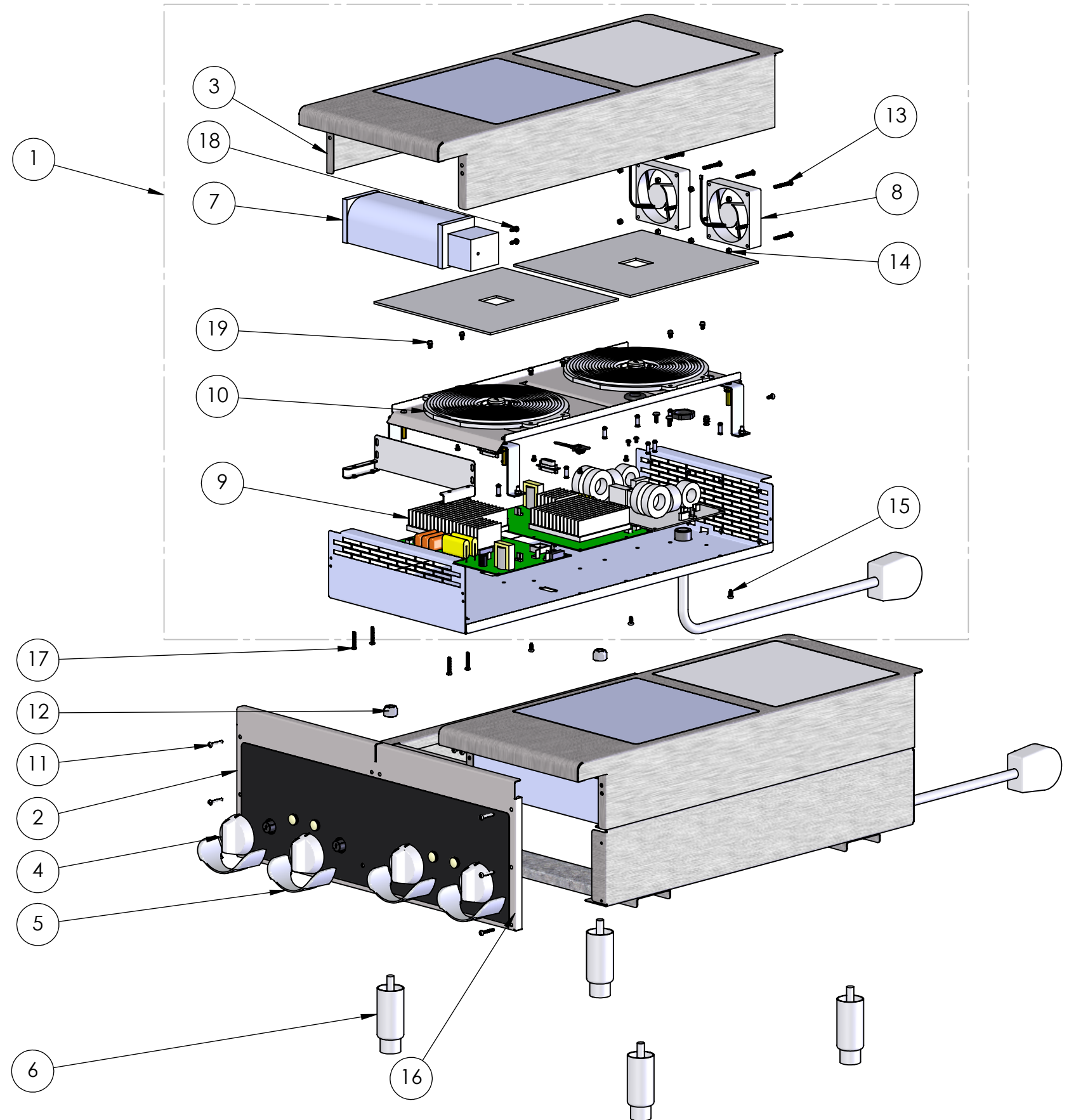


### REPLACEMENT PARTS

ITEM NO.	PART NUMBER	DESCRIPTION	QTY.
1	4161105-2	POWER UNIT SERVICE ASSEMBLY	2
2	4161401-2	FRONT PANEL ASSEMBLY, 4 HOB MANUAL	1
3	352366-2	TOP ASSEMBLY, GLASS	2
4	2351617-1	KNOB	4
5	2351608-1	KNOB GUARD	4
6	2351601-1	LEG	4
7	250911-1	AC BLOWER	2
8	352367-2	DC FAN KIT	2
9	352365-1	912/924 EMI & POWER BOARD KIT	1
10	2351616-1	INDUCTION COIL	2

### FASTENERS (GENERAL SPECIFICATION)

ITEM NO.	DESCRIPTION
11	SCREW, M4 X 25MM, SELF-TAPPING
12	NUT, 1/2"-13 UNC, NYLOCK
13	SCREW, M4x.7 X 35 MM
14	NUT, M4 HEX, NYLOCK
15	SCREW, M4 X 10MM, SELF-TAPPING
16	SCREW, 10-32 X 1/2", W/ LOCK WASHER
17	SCREW, M4x.7 X 25MM, W/ LOCK WASHER
18	SCREW, M4x.7 X 12MM, W/ LOCK WASHER
19	SCREW, M4x.7 x 8MM LG



OPENING THE UNIT VOIDS WARRANTY