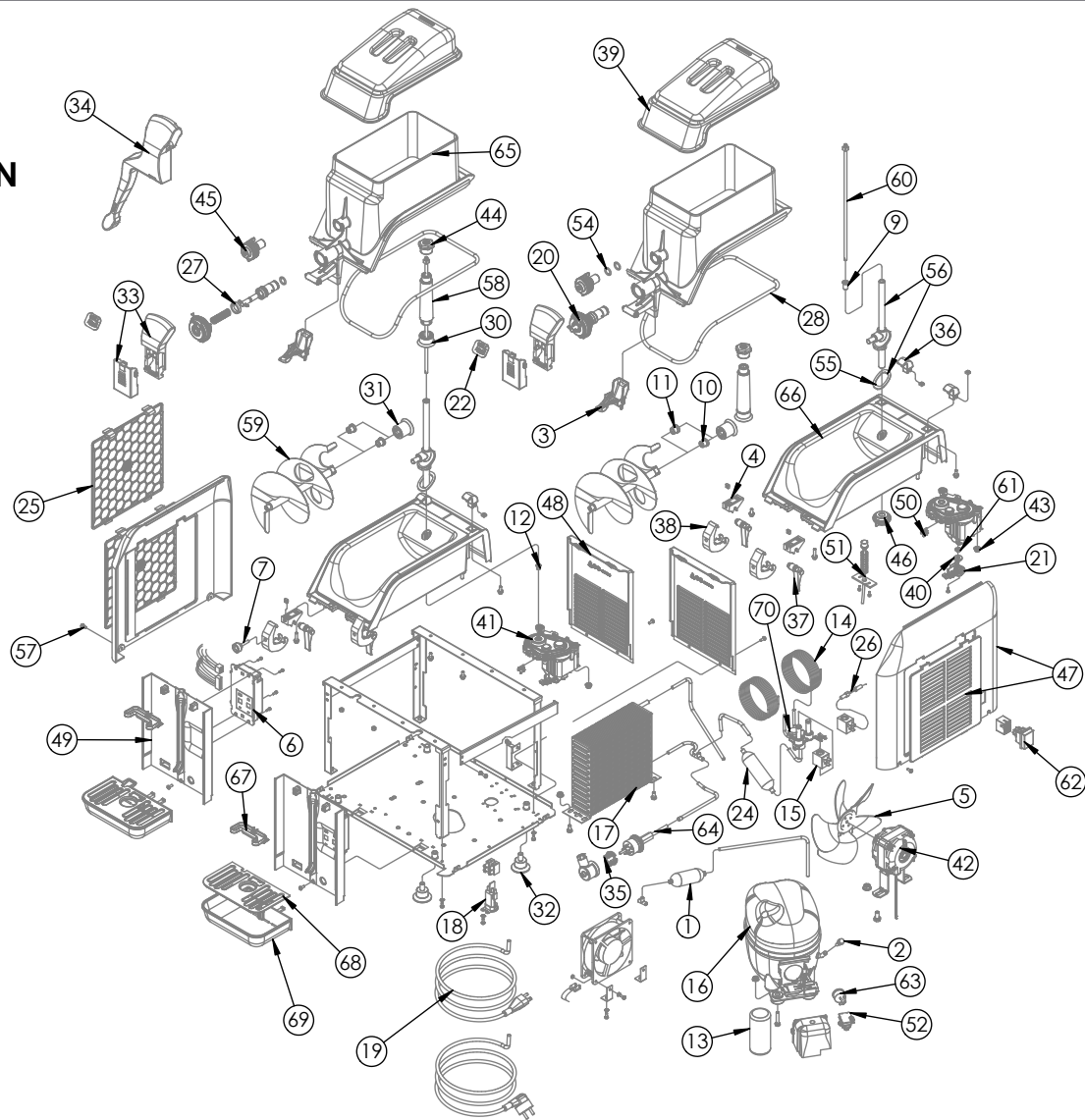




CBD127-37 SHOWN





REPLACEMENT PARTS CBD117-37

| ITEM NUMBER | DESCRIPTION | BALLOON NUMBER |
|-------------|--------------------------------|----------------|
| 107325 | ACCUMULATOR | 1 |
| 107504 | CHARGE VALVE+ COPPER PIPE | 2 |
| 110191 | ADAPTER FOR COLD DRINK | 3 |
| 142081 | BLACK BASE | 4 |
| 162082 | ALUMINUM FAN BLADE 200/34° | 5 |
| 167150 | ELECTRONIC BRD 100-115V REV 01 | 6 |
| 175558 | LOCKING BOLT | 7 |
| 200103 | SWITCH BRACKET | NOT SHOWN |
| 221457 | BUSHING TRANSMISSION SHAFT | 9 |
| 221458 | HORIZONTAL AUGER BUSHING | 10 |
| 221460 | HORIZ AUGER BUSHING 2012 VERS. | 11 |
| 221461 | GEAR MOTOR BUSHING | 12 |
| 231065 | START CAPACITOR 115V/60HZ | 13 |
| 231111 | BB1 0.91 CAPILLARY | 14 |
| 282140 | 115V/60HZ-100V/50HZ COMPRESSOR | 16 |
| 284052 | BB1 IRON AIR CONDENSER | 17 |
| 292371 | CONNECTION FOR SUPPLYWIRING | 18 |
| 302052 | POWER CORD 115 V U.L. FOR USA | 19 |
| 314225 | RING NUT LEVER COVER PISTON | 20 |
| 314250 | HALL CELL SENSOR KIT | 21 |
| 324987 | PULL HERE STICKER | 22 |
| 325003 | DECAL - CLEANING | NOT SHOWN |
| 342040 | BB1 DRYER | 24 |
| 368503 | BLACK PLASTIC AIR FILTER | 25 |
| 394268 | FAST FUSE 315MA 5X20 | 26 |
| 396696 | OUTLET BACK GASKET | 27 |
| 396697 | GASKET TRANSPARENT TANK | 28 |
| 396698 | TRANSMISSION SHAFT GASKET | NOT SHOWN |
| 405580 | VERTICAL AUGER GEAR | 30 |
| 405585 | HORIZONTAL AUGER GEAR | 31 |
| 422097 | RUBBER FEET | 32 |
| 428096 | BLACK HANDLE AND COVER | 33 |
| 428104 | ADA HANDLE EXTENSION | 34 |
| 431213 | PRSURE SWITCH CONNECTION WIRES | 35 |
| 442127 | BLACK REAR HINGE | 36 |
| 442128 | BLACK FRONT HINGE | 37 |
| 442129 | BLACK HINGE HOOK | 38 |
| 493128 | TRANSPARENT TOP | 39 |
| 508520 | PERMANENT MAGNET | 40 |

| ITEM NUMBER | DESCRIPTION | BALLOON NUMBER |
|-------------|--------------------------------|----------------|
| 350785-1 | GEAR MTR ASSY-REMOTE HALL CELL | 41 |
| 522890 | FAN MOTOR 17W 115V/50-60HZ | 42 |
| 538616 | M6 NUT | 43 |
| 538620 | RING NUT VERTICAL PROPELLER | 44 |
| 538621 | RING NUT HORIZONTAL AUGER | 45 |
| 538622 | RING NUT SHAFT FASTENING | 46 |
| 556640 | PLSTIC PNL R+L+FLTR+LOUVER BLK | 47 |
| 556644 | BCK PANEL BLK PLASTIC W LOUVER | 48 |
| 556645 | FRONT PANEL BLACK PLASTIC ABS | 49 |
| 571084 | COTTER PIN | 50 |
| 596079 | ELECT THERMOSTAT PROBE CMLPT | 51 |
| 618258 | RELAY 115V/60HZ-100V/50HZ | 52 |
| 618264 | POWER RELAY 120V 668281100300 | NOT SHOWN |
| 624700 | O-RING 117 | 54 |
| 625548 | TRANSMISSION SHAFT ORING | 55 |
| 647215 | TRANSM SHAFT W SLEEVE+ORING | 56 |
| 649094 | SCREW TAPPING, 3.9MM X 9.5MM | 57 |
| 674208 | VERT AUGER COMPLT OF BUSHING | 58 |
| 674209 | HORIZ AUGER COMPLT OF BUSHING | 59 |
| 674222 | TRANSMISSION SHAFT WITH NUT | 60 |
| 684026 | MAGNET SLEEVE | 61 |
| 717946 | MAIN SWITCH | 62 |
| 717951 | THERMAL PROTECTOR 115V/60HZ- | 63 |
| 717957 | R404A PRESSURE SWITCH | 64 |
| 724058 | TRANSPARENT TANK 2012 VERSION | 65 |
| 724062 | BLCK COMPLETE INOX TANK | 66 |
| 744618 | CONDENSATE DRIP TRAY | 67 |
| 744619 | INSERT - DRIP TRAY (BLACK) | 68 |
| 744621 | BLACK DRIP TRAY | 69 |
| 762902 | OLAB 1 WAY BODY VALVE | 70 |



ACCESSORIES

| ITEM NUMBER | DESCRIPTION | BALLOON NUMBER |
|-------------|--------------------------|----------------|
| 318433 | REFRACTOMETER-BRIX SCALE | NOT SHOWN |



REPLACEMENT PARTS CBD127-37

| ITEM NUMBER | DESCRIPTION | BALLOON NUMBER |
|-------------|--------------------------------|----------------|
| 107325 | ACCUMULATOR | 1 |
| 107504 | CHARGE VALVE+ COPPER PIPE | 2 |
| 110191 | ADAPTER FOR COLD DRINK | 3 |
| 142081 | BLACK BASE | 4 |
| 162082 | ALUMINUM FAN BLADE 200/34° | 5 |
| 167150 | ELECTRONIC BRD 100-115V REV 01 | 6 |
| 175558 | LOCKING BOLT | 7 |
| 200103 | SWITCH BRACKET | NOT SHOWN |
| 221457 | BUSHING TRANSMISSION SHAFT | 9 |
| 221458 | HORIZONTAL AUGER BUSHING | 10 |
| 221460 | HORIZ AUGER BUSHING 2012 VERS. | 11 |
| 221461 | GEAR MOTOR BUSHING | 12 |
| 231053 | START CAPACITOR 115V/60HZ- | 13 |
| 231113 | BB2 0.91 CAPILLARY | 14 |
| 272072 | OLAB COIL 120/50-60 UL | 15 |
| 282144 | 115V/60HZ-100V/50HZ COMPRESOR | 16 |
| 284053 | BB2 IRON AIR CONDENSER | 17 |
| 292371 | CONNECTION FOR SUPPLYWIRING | 18 |
| 302052 | POWER CORD 115 V U.L. FOR USA | 19 |
| 314225 | RING NUT LEVER COVER PISTON | 20 |
| 314250 | HALL CELL SENSOR KIT | 21 |
| 324987 | PULL HERE STICKER | 22 |
| 325003 | DECAL - CLEANING | NOT SHOWN |
| 342041 | BB2 DRYER | 24 |
| 368503 | BLACK PLASTIC AIR FILTER | 25 |
| 394268 | FAST FUSE 315MA 5X20 | 26 |
| 396696 | OUTLET BACK GASKET | 27 |
| 396697 | GASKET TRANSPARENT TANK | 28 |
| 396698 | TRANSMISSION SHAFT GASKET | NOT SHOWN |
| 405580 | VERTICAL AUGER GEAR | 30 |
| 405585 | HORIZONTAL AUGER GEAR | 31 |
| 422097 | RUBBER FEET | 32 |
| 428096 | BLACK HANDLE AND COVER | 33 |
| 428104 | ADA HANDLE EXTENSION | 34 |
| 431213 | PRSURE SWITCH CONNECTION WIRES | 35 |
| 442127 | BLACK REAR HINGE | 36 |
| 442128 | BLACK FRONT HINGE | 37 |
| 442129 | BLACK HINGE HOOK | 38 |
| 493128 | TRANSPARENT TOP | 39 |

| ITEM NUMBER | DESCRIPTION | BALLOON NUMBER |
|-------------|-------------------------------------|----------------|
| 508520 | PERMANENT MAGNET | 40 |
| 350785-1 | GEAR MTR ASSY-REMOTE HALL CELL | 41 |
| 522889 | FAN MOTOR 82UL-2009/32 115V/ | 42 |
| 538616 | M6 NUT | 43 |
| 538620 | RING NUT VERTICAL PROPELLER | 44 |
| 538621 | RING NUT HORIZONTAL AUGER | 45 |
| 538622 | RING NUT SHAFT FASTENING | 46 |
| 556640 | PLSTIC PNL R+L+FLTR+LOUVER BLK | 47 |
| 556644 | BCK PANEL BLK PLASTIC W LOUVER | 48 |
| 556645 | FRONT PANEL BLACK PLASTIC ABS | 49 |
| 571084 | COTTER PIN | 50 |
| 596079 | ELECT THERMOSTAT PROBE CMPLT | 51 |
| 618263 | RELAY 115V/60HZ-100V/50HZ, NE2125GK | 52 |
| 624700 | O-RING 117 | 54 |
| 625548 | TRANSMISSION SHAFT ORING | 55 |
| 647215 | TRANSM SHAFT W SLEEVE+ORING | 56 |
| 649094 | SCREW TAPPING, 3.9MM X 9.5MM | 57 |
| 674208 | VERT AUGER COMPLT OF BUSHING | 58 |
| 674209 | HORIZ AUGER COMPLT OF BUSHING | 59 |
| 674222 | TRANSMISSION SHAFT WITH NUT | 60 |
| 684026 | MAGNET SLEEVE | 61 |
| 717946 | MAIN SWITCH | 62 |
| 717955 | THERMAL PROTECTOR 115V/60HZ | 63 |
| 717957 | R404A PRESSURE SWITCH | 64 |
| 724058 | TRANSPARENT TANK 2012 VERSION | 65 |
| 724062 | BLCK COMPLETE INOX TANK | 66 |
| 744618 | CONDENSATE DRIP TRAY | 67 |
| 744619 | INSERT - DRIP TRAY (BLACK) | 68 |
| 744621 | BLACK DRIP TRAY | 69 |
| 762903 | OLAB 3 WAY BODY VALVE | 70 |



ACCESSORIES

| ITEM NUMBER | DESCRIPTION | BALLOON NUMBER |
|-------------|--------------------------|----------------|
| 318433 | REFRACTOMETER-BRIX SCALE | NOT SHOWN |