



Hot Beverage / Topping Dispenser

Item No: **21011**

115 Volts, 60 Hz



WARNING ELECTRICAL SHOCK HAZARD.

FAILURE TO FOLLOW THESE INSTRUCTIONS COULD RESULT IN SERIOUS INJURY OR DEATH.

WARNING: Handling the cord on this product may expose you to lead, a chemical known to the State of California to cause cancer and birth defects or other reproductive harm. WASH HANDS AFTER HANDLING.

Electrical ground is required on this appliance.

1. Do not modify the power supply cord plug. If it does not fit the outlet, have a proper outlet installed by a qualified electrician.
2. Do not use an extension cord with this appliance.
3. Check with a qualified electrician if you are in doubt as to whether the appliance is properly grounded.

SAFETY INSTRUCTIONS

1. Plug electrical cord into a certified electrical outlet with a corresponding voltage rating as listed on the machine model labels.
2. Always unplug the electric cord when appliance is not in use and before cleaning, adjusting or maintaining this machine. Do not operate with a damaged cord or plug or after the machine malfunctions, has been dropped or damaged. Use authorized service for examination, electrical or mechanical adjustment or repair.
3. This equipment will be HOT during use and for a short time after it is turned off, BE CAREFUL. To avoid burns, do not let bare skin touch hot surfaces. If provided, use handles when moving this appliance. Keep combustible materials away from appliance.
4. Extreme caution is necessary when any appliance is used by or near children and whenever the appliance is left operating and unattended.
5. This appliance is not intended for use in wet locations. Never locate appliance where it may fall into a water container.
6. Do not insert or allow foreign objects to enter any ventilation or exhaust opening as this may cause an electrical shock, fire or damage to the appliance.

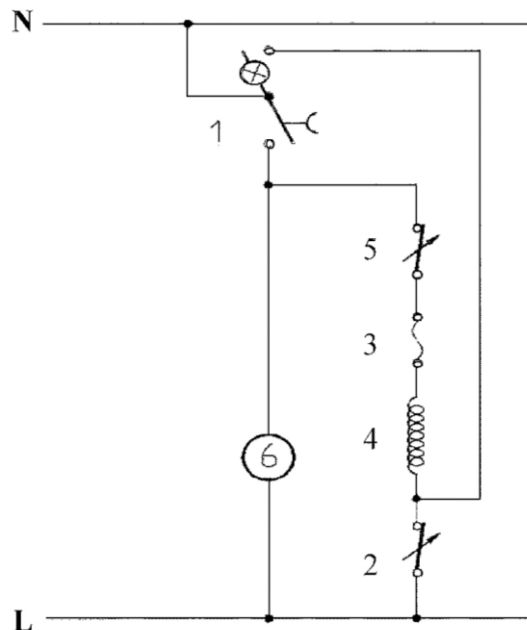
Operating Instructions

1. Clean and sanitize the dispenser before initial use.
2. Fill the bowl with the desired product. Prepare product as suggested by the manufacturer of that product.
3. Place cover securely on the bowl before switching on dispenser and be sure the faucet is closed.
4. Turn machine on and mixer will begin to operate. Thermostat under the machine should be set to highest temperature and can be lowered to regulate max temp.
5. Adjust thermostat to desired temperature and LED light will remain on until the heating element reaches that temperature.
6. When product is warm, place serving dish or cup under the faucet and pull handle forward to dispense.
7. When serving is complete bowl can be removed and refrigerated for future use.

Cleaning

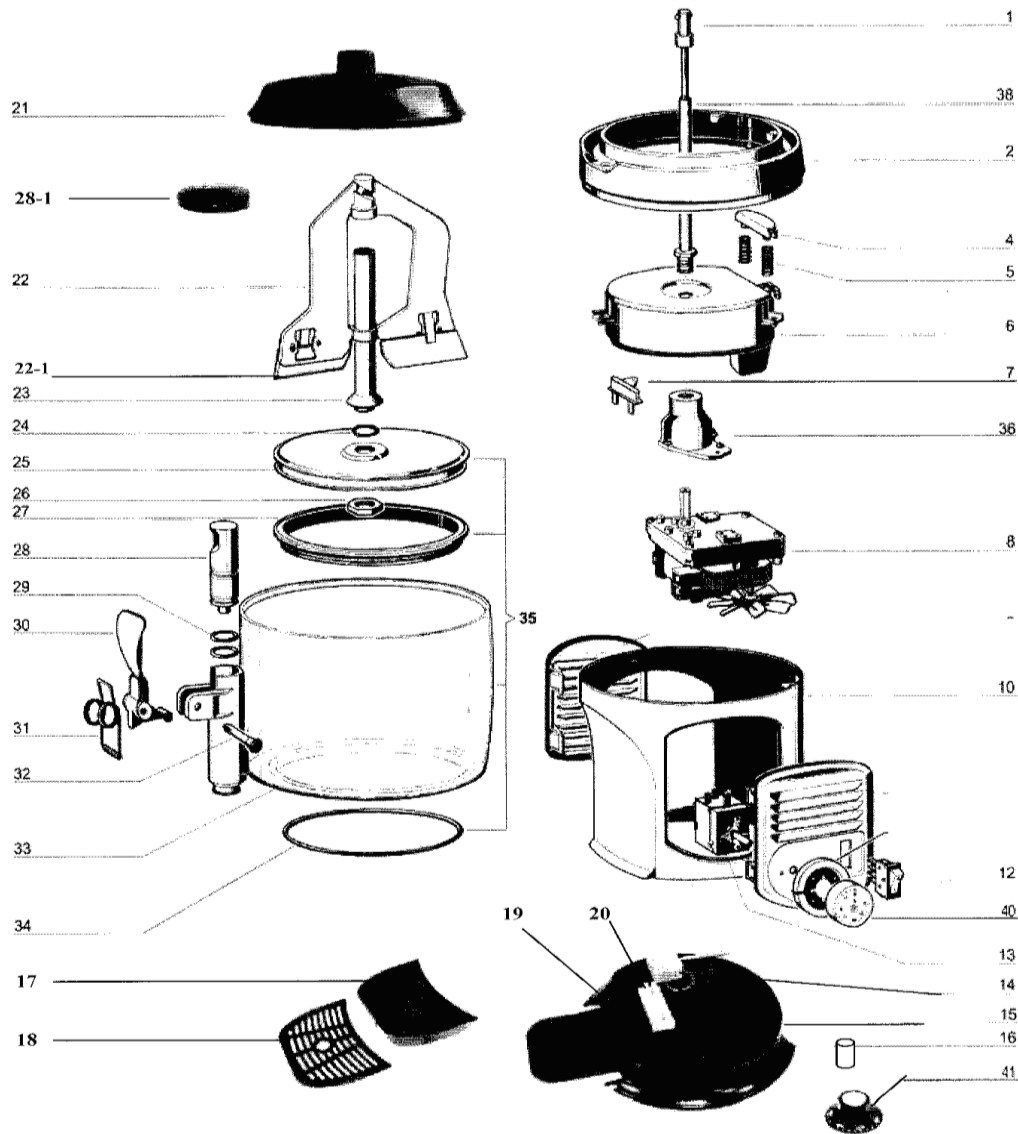
1. Unplug the machine from power source before breaking down parts.
2. Remove the lid and mixer and empty the bowl.
3. Dismantle the faucet by removing the pin, then handle and finally the piston.
4. Remove the drip tray and empty waste.
5. The bowl, lid, faucet, mixer and drip tray can be hand washed or washed in a dishwasher. The body of the machine can be wiped clean with wet cloth and should never be submerged in water.
6. When all items are clean and dry, reassemble machine for next use.

Wiring Diagram



1. Switch 2. 0-90°C Thermostat 3. Limit switch 152°C 4. Heating Element
 5. 0-120°C Thermostat 6. Gear Motor

Assembly Instructions and Parts



Parts List

Fig.	Part#	Part Description	Fig.	Part#	Part Description	Fig.	Part#	Part Description
1	21001	Drive shaft	16	21016	Rubber Foot	28	21028	Faucet Piston and Cap
2	21002	Heat plate holder	17	21017	Drip Tray	29	21029	Faucet Piston O-ring
4	21004	Thermostat bulb holder	18	21018	Drip Tray Cover	30	21030	Faucet Handle
5	21005	Bulb holder spring	19	21019	Strain Relief	31	21031	Faucet Spring
6	21006	120V 60Hz Heating plate	20	21020	Terminal Block	32	21032	Faucet Handle Pin
7	21007	Limit Switch	21	21021	Bowl Lid	33	21033	Bowl
8	21008	120V 60Hz gear motor	22	21022	Mixer and Base	34	21034	Bowl O-ring
10	21010	Cabinet	23	21023	Bowl shaft	35	21035	Bowl Assembly
12	21012	Switch	24	21024	Bowl shaft O-ring	36	21036	Gear Motor Flange
13	21013	0-90°C Thermostat	25	21025	Bowl bottom plate	38	21038	Central Shaft
14	21014	0-120°C Thermostat	26	21026	Central Shaft Nut	40	21040	0-90°C Thermostat Knob
15	21015	Base	27	21027	Bowl Gasket	41	21041	0-120°C Thermostat Knob