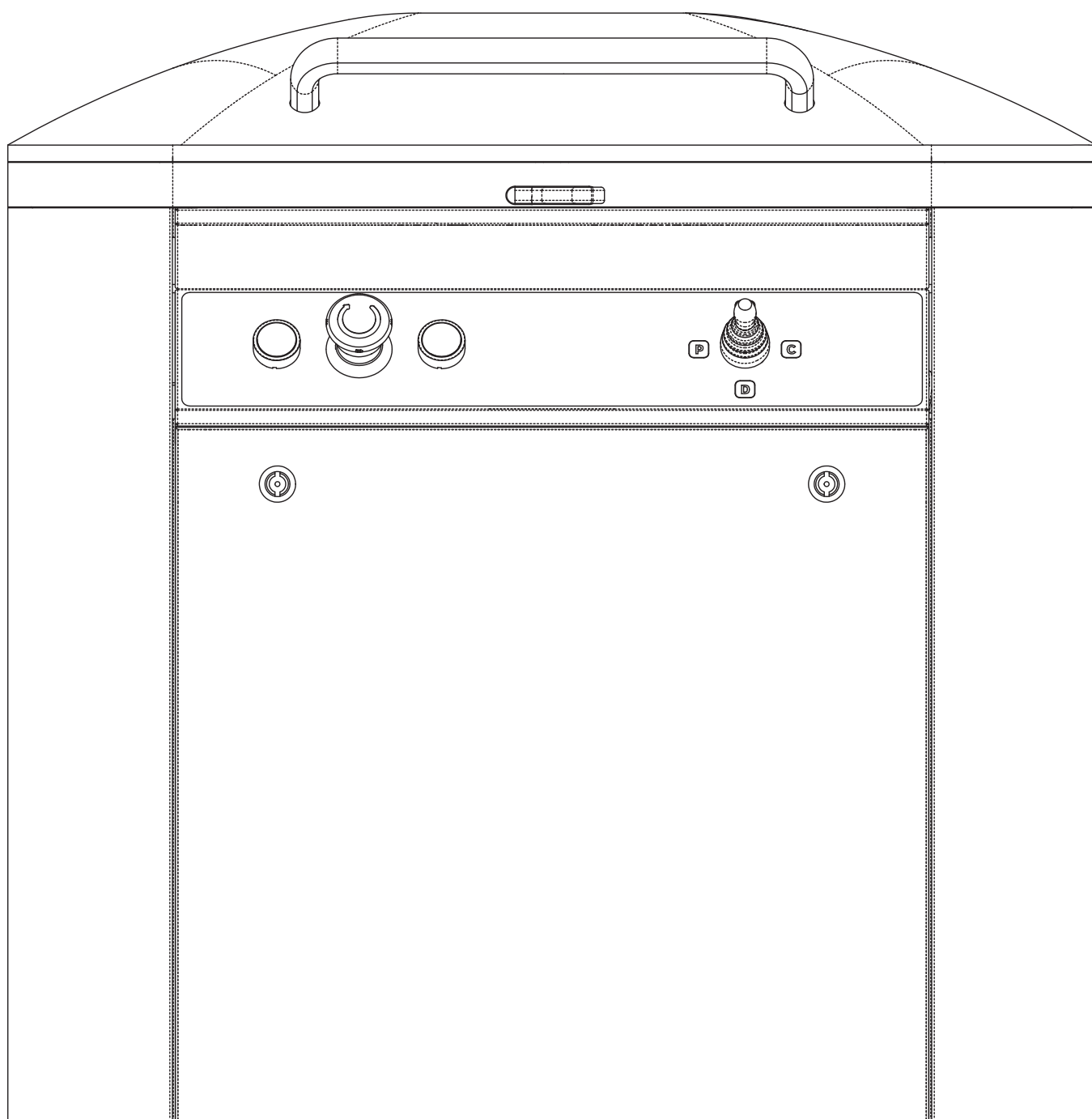


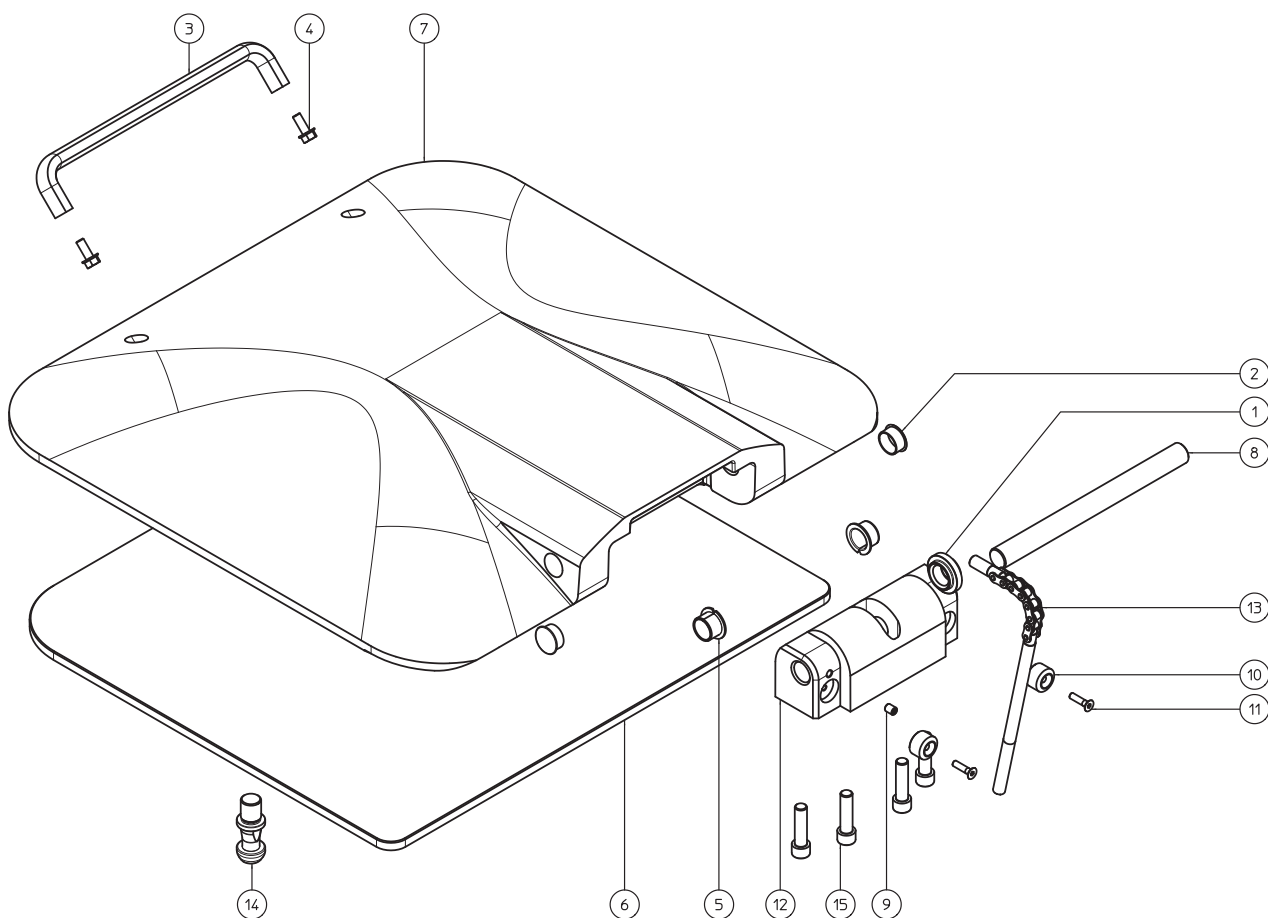
SPARE PARTS

SEMI-AUTOMATIC DIVIDERS LC

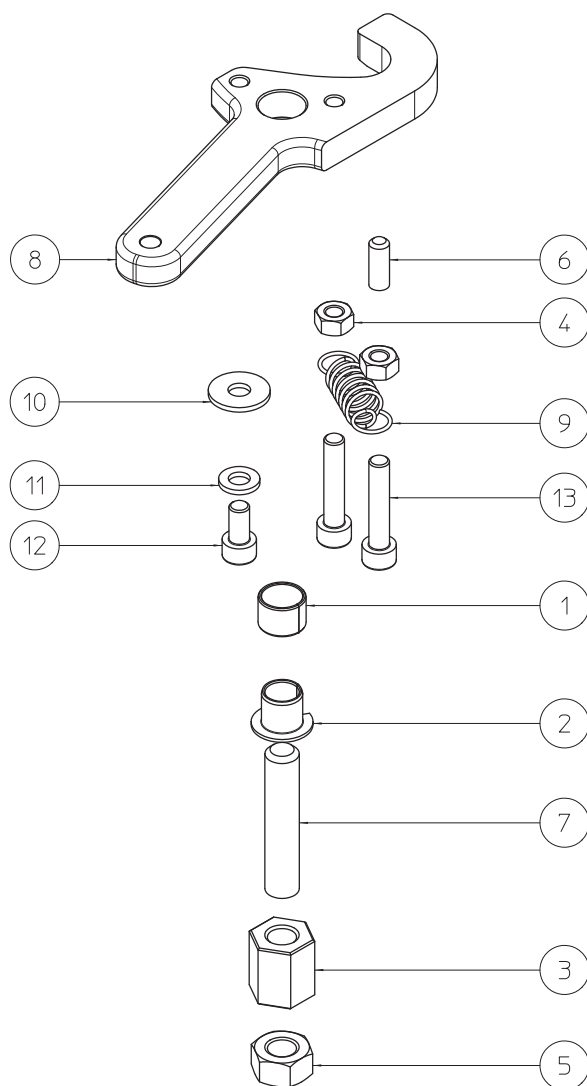


- 4** COVER GROUP
- 5** COVER LID
- 6** COVER BALANCING
- 7** FRAME
- 8** 4 REMOVABLE PANNELS CASING
- 10** ROUND BASIN GROUP
 - 11** 20 DIVISIONS KNIFE GROUP
- 12** HYDRAULIC GROUP
- 13** ELECTRICAL GROUP
- 15** ELECTRICAL BOX UL/CSA
- 16** ELECTRICAL BOX STANDARD

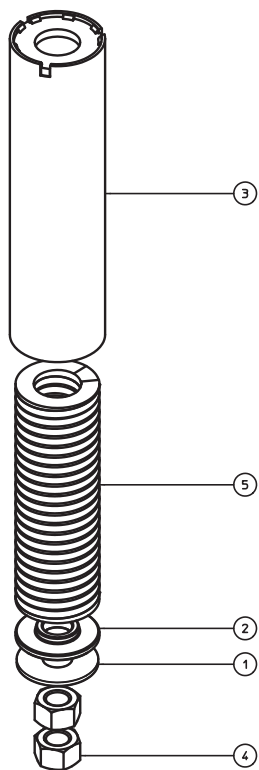
COVER GROUP COD. CP000003



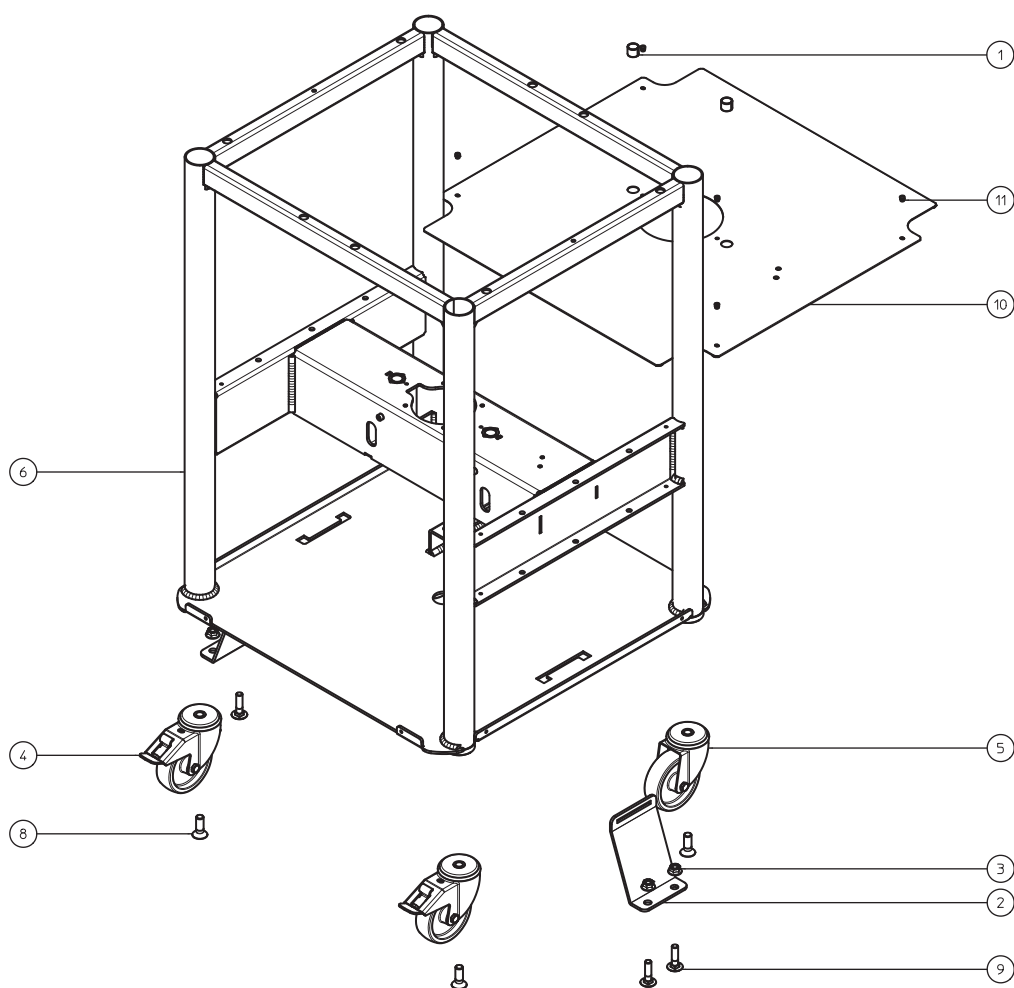
| POSITION | QUANTITY | CODE | DESCRIPTION |
|----------|----------|----------|-----------------------|
| 1 | 1 | 33800031 | CHAIN GUIDE |
| 2 | 2 | 64920008 | PLUG |
| 3 | 1 | 43712630 | HANDLE COVER |
| 4 | 2 | 69210820 | SCREW M8X20 ZINC. |
| 5 | 2 | 18072216 | LATCH INSERT KF 22 15 |
| 6 | 1 | 50850028 | COVER PLATE |
| 7 | 1 | 35050001 | COVER |
| 8 | 1 | 49410030 | COVER PIN |
| 9 | 1 | 37010810 | SCREW M8X10 |
| 10 | 2 | 50850029 | STOPPER |
| 11 | 2 | 69270625 | SCREW M6X25 INOX |
| 12 | 1 | 61900041 | LID SUPPORT |
| 13 | 1 | 18100005 | BALANCE CHAIN |
| 14 | 1 | 35440010 | HOOK |
| 15 | 4 | 69161245 | SCREW M12X45 ZINC. |



| POSITION | QUANTITY | CODE | DESCRIPTION |
|----------|----------|----------|------------------------|
| 1 | 1 | 18061210 | LATCH INSERT KU 12 10 |
| 2 | 1 | 18071012 | LATCH INSERT KF 10 12 |
| 3 | 1 | 30030002 | LOCKING NUT |
| 4 | 2 | 30130601 | NUT M6 ZINC. |
| 5 | 1 | 30131001 | NUT M10 ZINC. |
| 6 | 1 | 37040616 | SCREW STEI M6X16 |
| 7 | 1 | 37041050 | SCREW STEI M10X50 |
| 8 | 1 | 42310028 | RELEASE LEVER |
| 9 | 1 | 44833111 | SPRING T31740 |
| 10 | 1 | 59090618 | WASHER D.6X18 ZINC. |
| 11 | 1 | 59150612 | WASHER D.6 ZINC. |
| 12 | 1 | 69160612 | SCREW TCEI M6X12 ZINC. |
| 13 | 2 | 69160630 | SCREW TCEI M6X30 ZINC. |

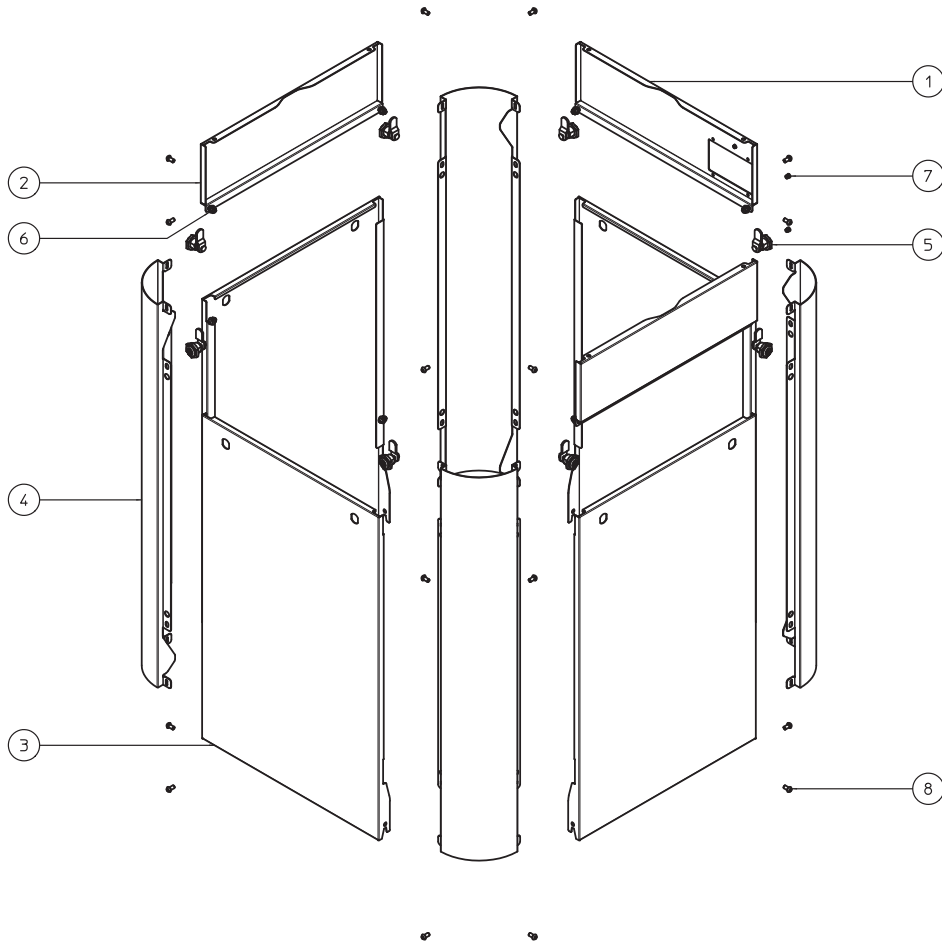


| POSITION | QUANTITY | CODE | DESCRIPTION |
|----------|----------|----------|---------------------------|
| 1 | 1 | 59091236 | WASHER D12X36 SP. 2 ZINC. |
| 2 | 1 | 58920002 | LOWER BALANCING WASHER |
| 3 | 1 | 66880053 | PIPE |
| 4 | 2 | 30131201 | NUT M12 ZINC. |
| 5 | 1 | 44873818 | BLU SPRING D38X180 |



| POSITION | QUANTITY | CODE | DESCRIPTION |
|----------|----------|----------|----------------------|
| 1 | 2 | 18061615 | LATCH INSERT KU 1615 |
| 2 | 2 | 20120281 | MOUNTING BRACKET |
| 3 | 4 | 30211001 | NUT M10 ZINC. |
| 4 | 2 | 59860003 | CASTER WITH BRAKE |
| 5 | 2 | 59860004 | CASTER WITHOUT BRAKE |
| 6 | 1 | 60010040 | FRAME |
| 7 | 2 | 69160612 | SCREW M6X12 ZINC. |
| 8 | 4 | 69241235 | SCREW M12X35 ZINC. |
| 9 | 4 | 69251040 | SCREW M10X40 ZINC. |
| 10 | 1 | 20120302 | DEBRIS CATCH PLATE |
| 11 | 6 | 58250410 | ALUMINUM RIVET |

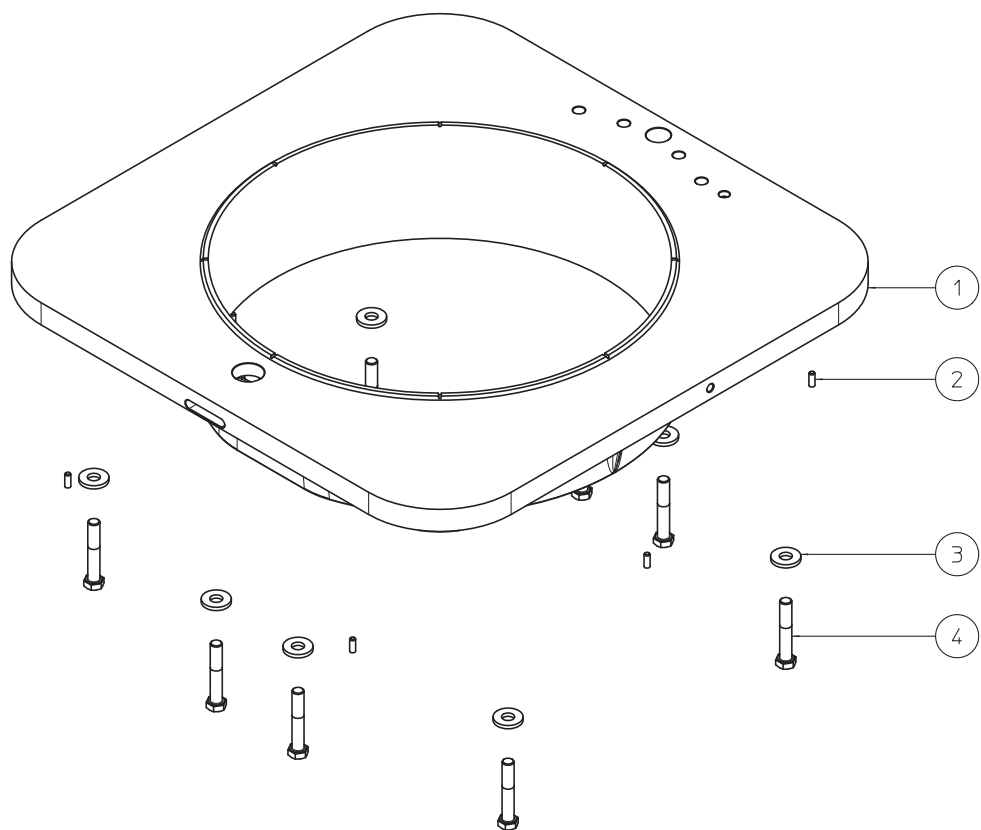
4 REMOVABLE PANNELS CASING **COD. CR000005**



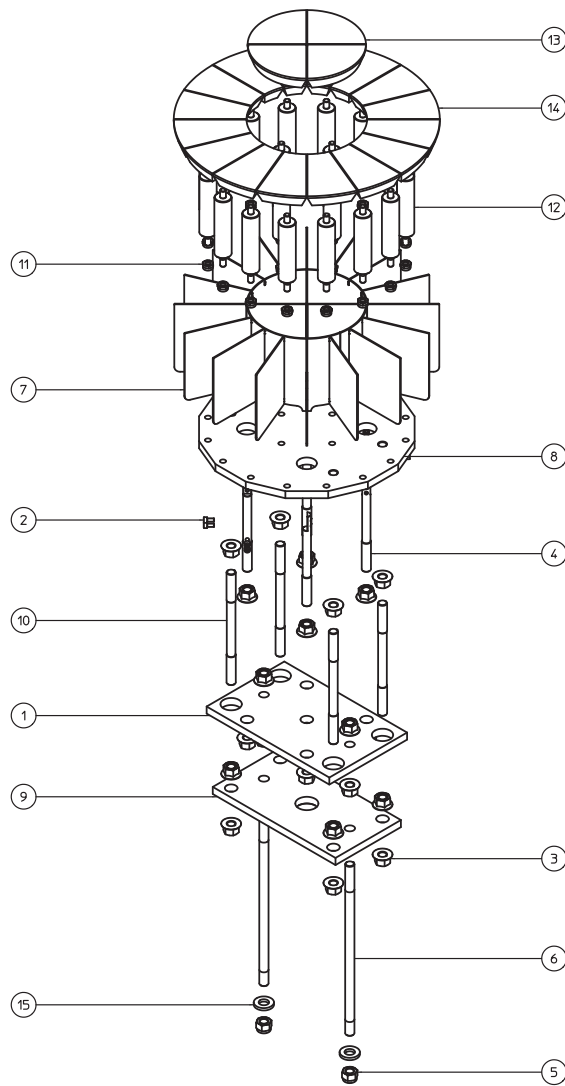
| POSITION | QUANTITY | CODE | DESCRIPTION |
|----------|----------|----------|---------------------|
| 1 | 1 | 20120299 | POWER SUPPLY PANNEL |
| 2 | 2 | 20120296 | FIX LATERAL PANNEL |
| 3 | 4 | 20120300 | REMOVABLE PANNEL |
| 4 | 4 | 20120297 | ANGULAR PANNEL |
| 5 | 8 | 22803621 | LOCK |
| 6 | 8 | 30190601 | NUT M6 ZINC. |
| 7 | 20 | 58250410 | ALUMINUM RIVET |
| 8 | 8 | 69180612 | SCREW M6X12 ZINC. |

KEY - # S22400001

ROUND BASIN GROUP COD. VS000001

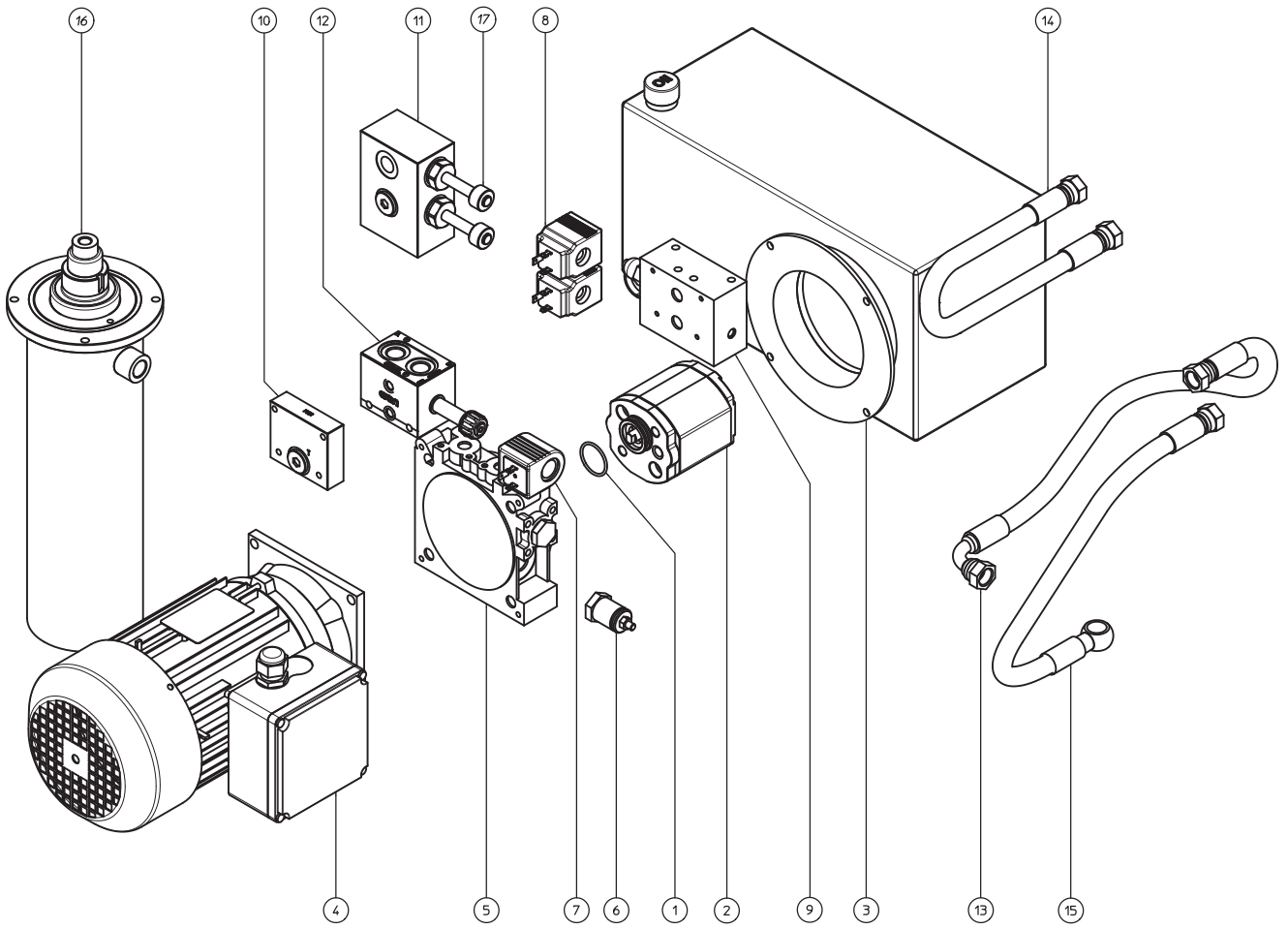


| POSITION | QUANTITY | CODE | DESCRIPTION |
|----------|----------|----------|----------------------------|
| 1 | 1 | 35150002 | ROUND BASIN |
| 2 | 6 | 37040616 | SCREW M06X16 |
| 3 | 8 | 59091230 | WASHER D.12X30 SP. 4 ZINC. |
| 4 | 8 | 69201270 | SCREW M12X70 ZINC. |



| POSITION | QUANTITY | CODE | DESCRIPTION |
|----------|----------|----------|--------------------------------|
| 1 | 1 | 49420117 | KNIFE SUPPORT PLATE |
| 2 | 8 | 69280612 | SCREW TCEI M6X12 INOX |
| 3 | 24 | 30191601 | NUT M16 ZINC. |
| 4 | 4 | 65810010 | CUTTING KNIFE SUPPORT SHAFTS |
| 5 | 2 | 30081601 | SELFLOCKING NUT M16 ZINC. |
| 6 | 2 | 65810012 | FIXED LIMIT ROD |
| 7 | 1 | 60040142 | KNIFE |
| 8 | 1 | 49420116 | PRESS SUPPORT PLATE |
| 9 | 1 | 49420118 | PRESS SUPPORT GUIDE ROD PLATE |
| 10 | 4 | 65810011 | PRESS SUPPORT PLATE GUIDE RODS |
| 11 | 20 | 30091001 | NUT M10 ZINC. |
| 12 | 20 | 62000005 | PRESS PLATE SUPPORT |
| 13 | 4 | 52600032 | INSIDE PRESS PLATES |
| 14 | 16 | 52600033 | OUTSIDE PRESS PLATES |
| 15 | 2 | 59091635 | WASHER D.16X35 SP. 45 ZINC. |

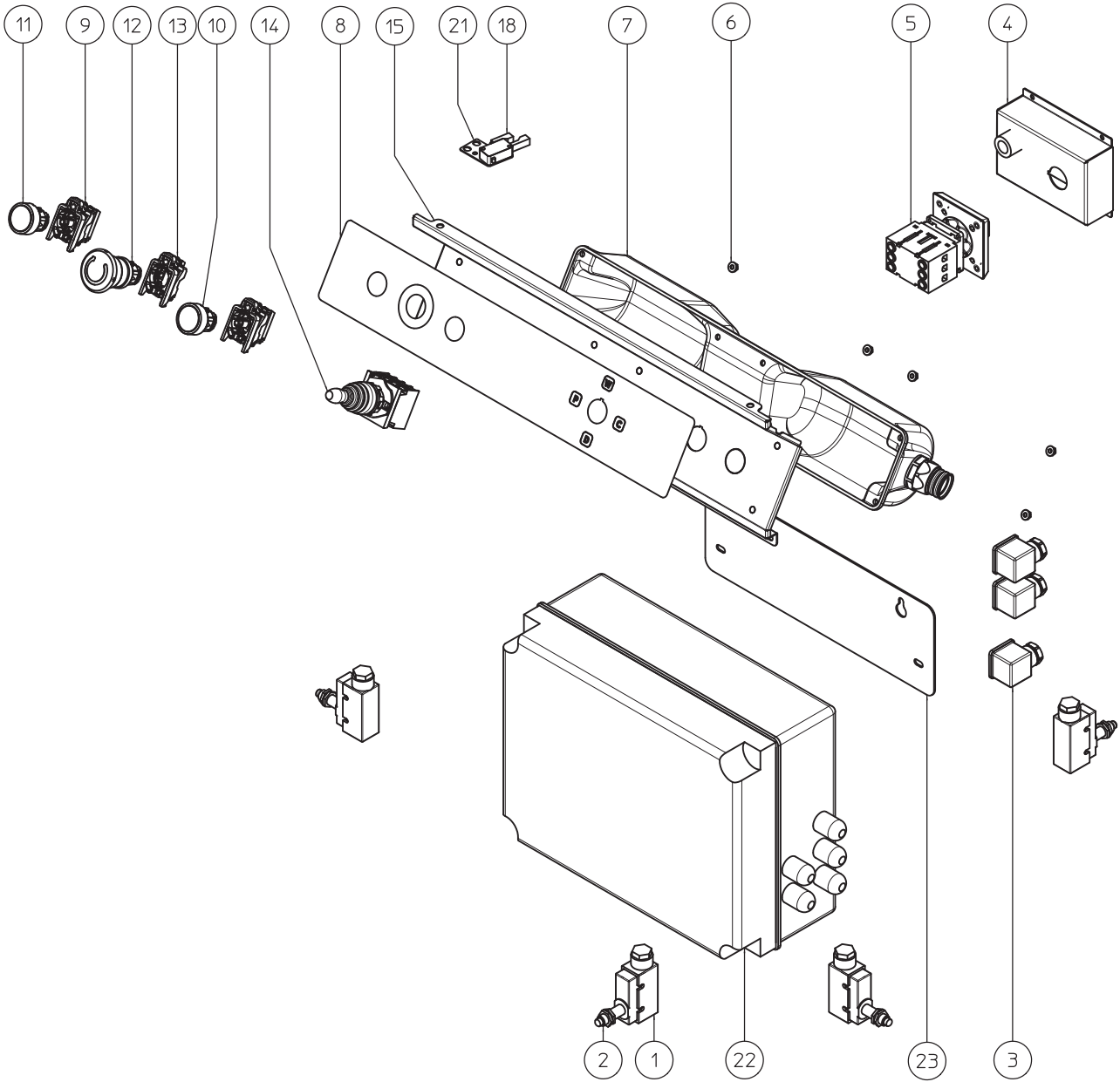
PISTON WASHER - V59254062
PISTON NUT ----- V35474058





| POSITION | QUANTITY | CODE | DESCRIPTION |
|----------|----------|----------|--|
| 1 | 1 | 38693106 | OR SEAL 3106 |
| 2 | 1 | 50970002 | PUMP MOD. K1P D 15 G P199 |
| 2 | 1 | 50970003 | PUMP MOD. "T" PHC 1—6,0 X MC (MOTOR MONOPHASE) |
| 3 | 1 | 60060004 | OIL TANK |
| 4 | 1 | 45200002 | MOTOR THREE PHASES 230-400/3/50-60 STANDARD |
| 4 | 1 | 45220002 | MOTOR THREE PHASES UL 230/3/60 |
| 4 | 1 | 45120002 | MOTOR MONOPHASE UL 230/1/60 |
| 4 | 1 | 45150002 | MOTOR MONOPHASE UL 110/1/60 |
| 5 | 1 | 28320006 | HYDRAULIC BODY |
| 6 | 1 | 30900001 | VALVLE |
| 7 | 1 | 17500001 | COIL A0924DDC STANDARD |
| 7 | 1 | 17500004 | COIL A0924VDC-27W M UL |
| 8 | 2 | 17500003 | COIL 24VDC - 18W STANDARD |
| 8 | 2 | 17500005 | COIL 24VDC-EC360 22W UL |
| 9 | 1 | 28320002 | INTERFACE BLOCK |
| 10 | 1 | 28320004 | BLOCK FU31 |
| 11 | 1 | 28330001 | INTERFACE BLOCK |
| 12 | 1 | 31770009 | PARALLEL COMPONIBLE DISTRIBUTOR |
| 13 | 1 | 66950006 | PIPE R1T 3/8" FD+F90 |
| 14 | 1 | 66950008 | PIPE R1T 3/8" FD+FD |
| 15 | 1 | 66950009 | PIPE R1T 3/8" OC+FD |
| 16 | 1 | 23700002 | HYDRAULIC CYLINDER |
| 17 | 1 | 19800002 | CARTRIDGE DOUBLE SEAL |

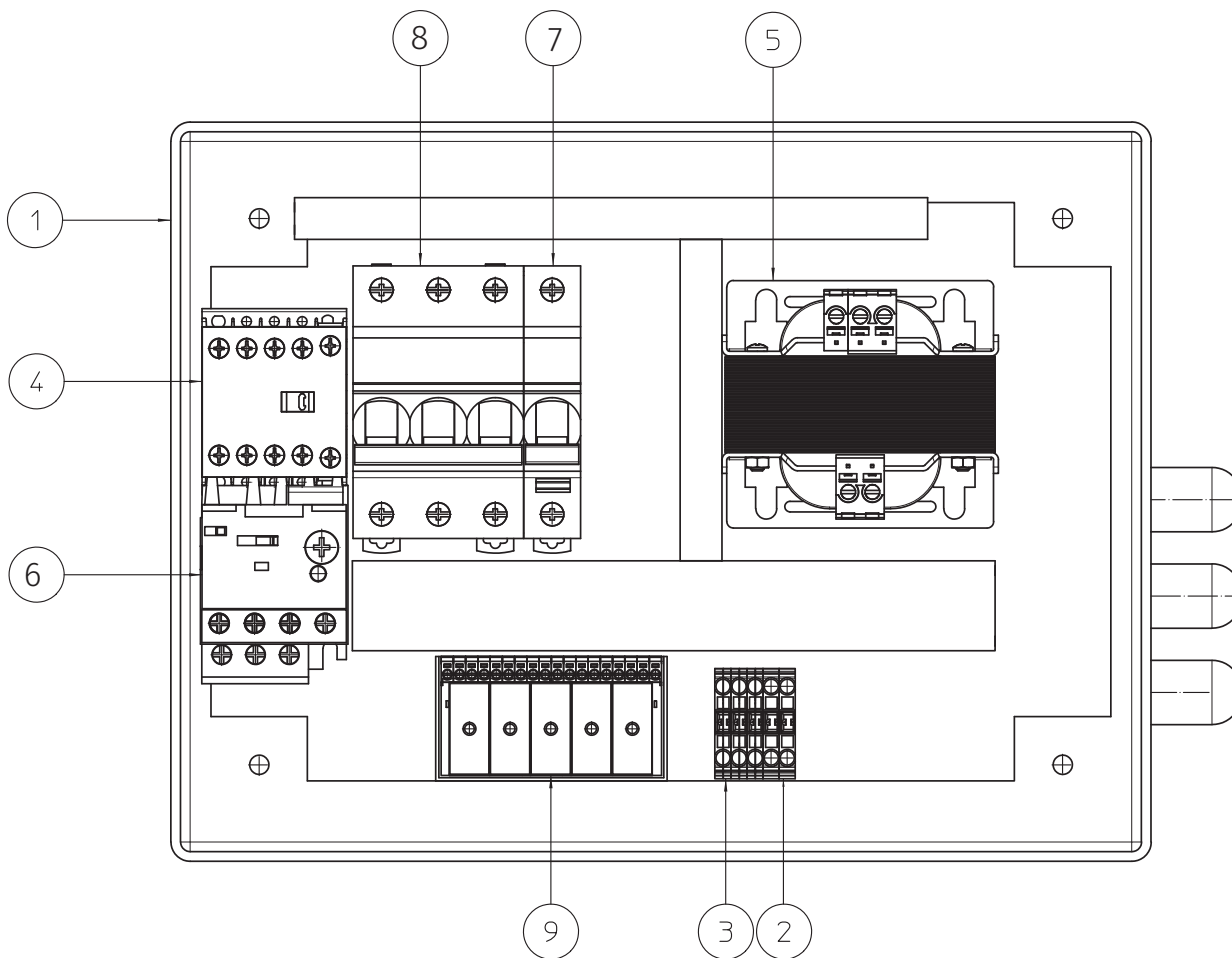
ELECTRICAL GROUP



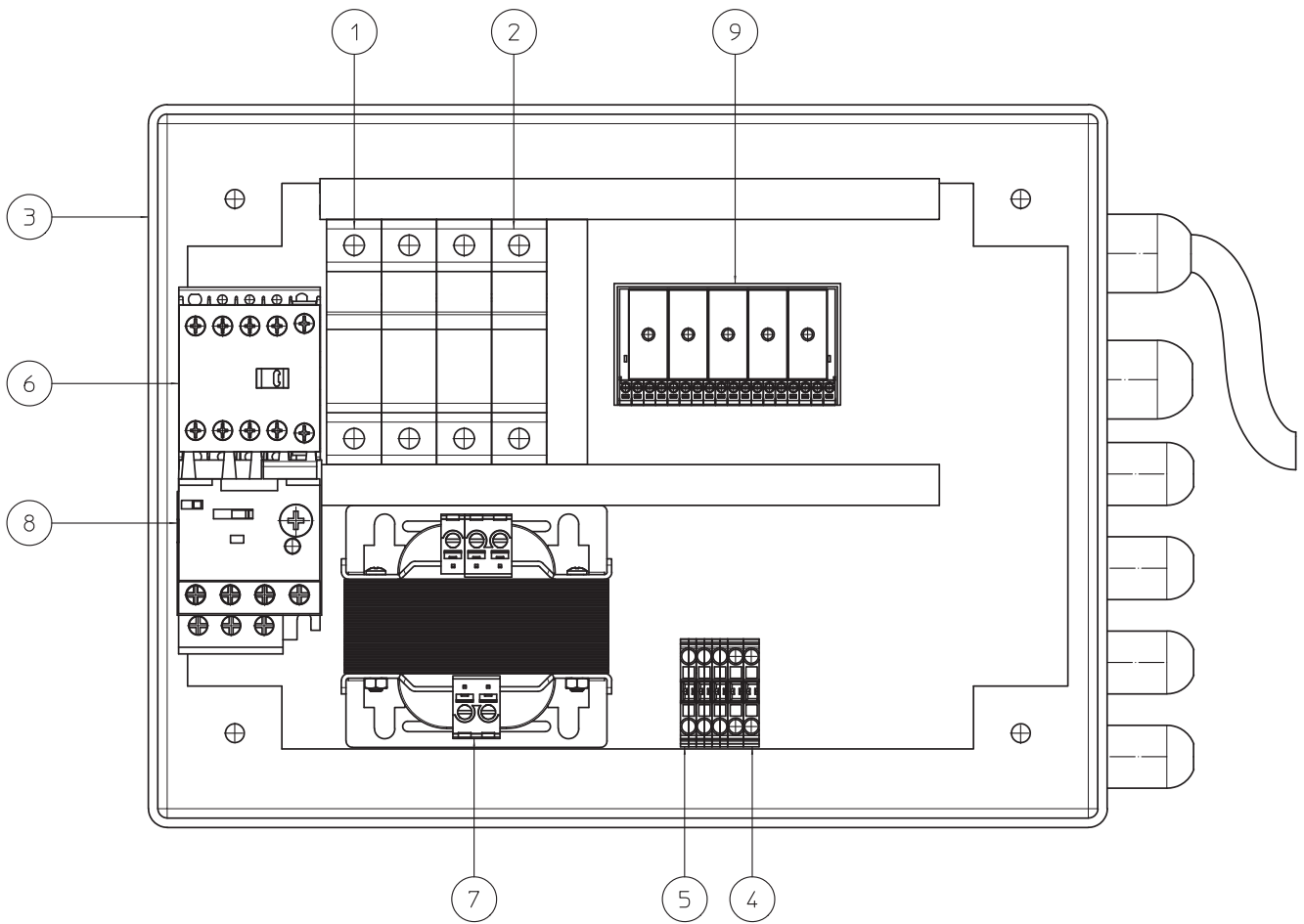


| POSITION | QUANTITY | CODE | DESCRIPTION |
|----------|----------|----------|-----------------------------------|
| 1 | 4 | 53800029 | SWITCHES COVER |
| 2 | 4 | 60710005 | SWITCHES |
| 3 | 3 | 25300001 | CONNECTOR VDR-220V CNT532 PG09 NE |
| 4 | 1 | 20120324 | POWER SUPPLY COVER |
| 5 | 1 | 53800033 | MAIN SWITCH |
| 6 | 6 | 30190401 | NUT M4 ZINC. |
| 7 | 1 | 65610001 | CONTROL PANEL REAR COVER |
| 8 | 1 | 60850006 | SERIGRAPHY |
| 9 | 2 | 53800023 | LID LIGHT SUPPORT |
| 10 | 1 | 53800031 | GREEN LIGHT |
| 11 | 1 | 53800022 | WHITE LIGHT |
| 12 | 1 | 53800001 | EMERGENCY STOP BUTTON |
| 13 | 1 | 53800014 | EMERGENCY STOP BUTTON SUPPORT |
| 14 | 1 | 53800032 | 4 POSITIONS JOYSTICK |
| 15 | 1 | 20120298 | CONTROL PANEL PLATE |
| 16 | 2 | 59150612 | WASHER D.6 ZINC. |
| 17 | 3 | 69160612 | SCREW TCEI M6X12 ZINC. |
| 18 | 1 | 60710006 | SWITCHES |
| 19 | 2 | 69180316 | SCREW TCBEI M3X12 ZINC. |
| 20 | 2 | 30130301 | NUT M3 ZINC. |
| 21 | 1 | 20100450 | FIXING FOR SWITCHES |
| 22 | 1 | 53800045 | PAINTED STEEL ELECTRICAL BOX (UL) |
| 22 | 1 | 53800051 | PLASTIC ELECTRICAL BOX (STANDARD) |
| 23 | 1 | 20100417 | FIXING PLATE |

ELECTRICAL BOX UL/CSA



| POSITION | QUANTITY | CODE | DESCRIPTION |
|----------|----------|----------|---|
| 1 | 1 | 53800045 | PAINTED STEEL ELECTRICAL BOX (UL) |
| 2 | 4 | 53800057 | CLAMPS 2,5 MMQ |
| 3 | 3 | 53800058 | GROUD CLAMPS 2,5 MMQ |
| 4 | 1 | 65050002 | CONTACTOR |
| 5 | 1 | 66000013 | TRANSFORMER 230/3/60 - 230/1/60 - 110/1/60 UL |
| 6 | 1 | 66000017 | THERMAL OVERLOAD 10/14 A - 110 V 1 PH |
| 6 | 1 | 66000018 | THERMAL OVERLOAD 5,5/8 A - 230 V 1 PH |
| 6 | 1 | 66000005 | THERMAL OVERLOAD 3,7/5,5 A - 230 V 3 PH |
| 7 | 1 | 66000015 | CIRCUIT BREAKER UNIP. C4 |
| 8 | 1 | 66000016 | CIRCUIT BREAKER TRIP. C16 |
| 9 | 1 | 66000019 | PC BOARD WITH RELAY' |



| POSITION | QUANTITY | CODE | DESCRIPTION |
|----------|----------|----------|--|
| 1 | 1 | 49070001 | FUSE HOLDER THREE POLE RM32A 10X38 |
| 2 | 1 | 49070002 | FUSE HOLDER SINGLE POLE RM32A 10X38 |
| 3 | 1 | 53800051 | PLASTIC ELECTRICAL BOX |
| 4 | 2 | 53800057 | CLAMPS 2,5 MMQ |
| 5 | 3 | 53800058 | GROUD CLAMPS 2,5 MMQ |
| 6 | 1 | 65050002 | CONTACTOR |
| 7 | 1 | 66000001 | TRANSFORMER 230/3/50-60 - 400/3/50-60 CE |
| 8 | 1 | 66000004 | THERMAL OVERLOAD 1,8/2,6 A - 400 V 3 PH |
| 8 | 1 | 66000005 | THERMAL OVERLOAD 3,7/5,5 A - 230 V 3 PH |
| 9 | 1 | 66000019 | PC BOARD WITH RELAY' |



All machines are in conformity with EC regulations and are manufactured in Italy.